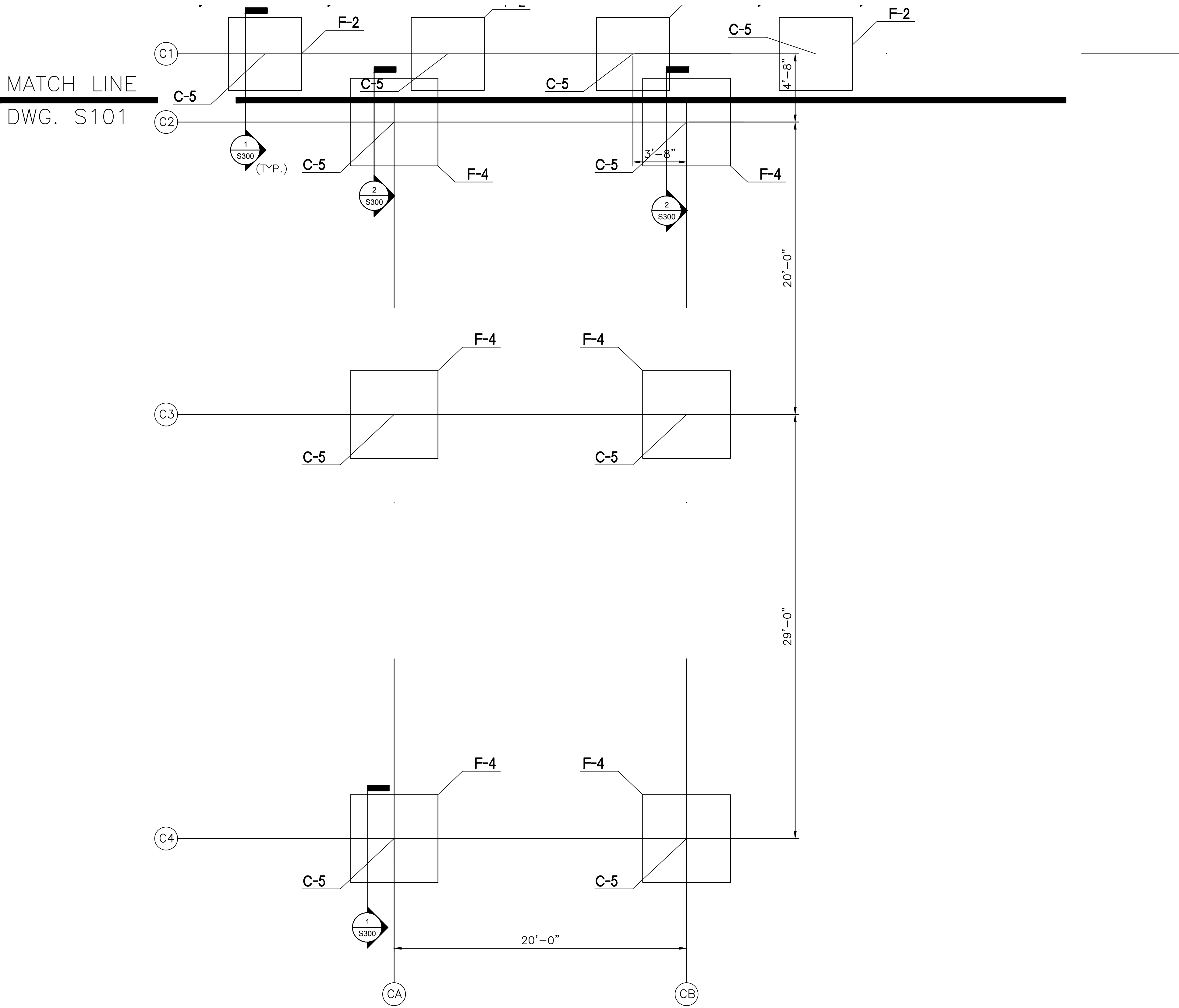
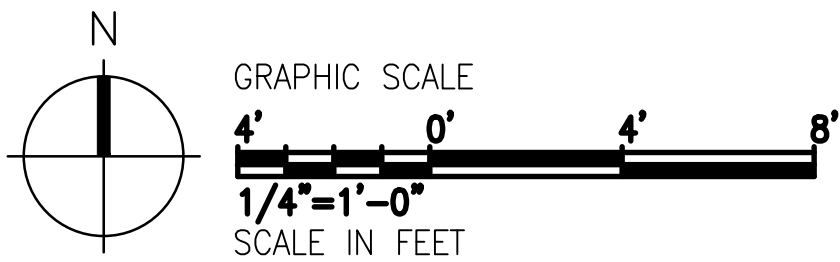


SLAB-ON-GRADE AND FOUNDATION PLAN NOTES:

1. TYPICAL SLAB-ON-GRADE SHALL CONSIST OF 4" THICK NORMAL WEIGHT CONCRETE REINFORCED WITH 6"x6"-W2.9xW2.9 WELDED WIRE FABRIC (WWF), AND PLACED OVER A 10 MIL. VAPOR BARRIER AND PREPARED SOIL PER GEOTECHNICAL REPORT.
2. REFER TO PLAN & TYPICAL SLAB DETAILS FOR THICKENED SLABS. REFER TO ARCHITECTURAL AND MECHANICAL DRAWINGS FOR SLOPES, DEPRESSIONS, ETC.
3. TYPICAL SLAB-ON-GRADE ELEVATION SHALL BE 18.50' (DATUM 0'-0").
4. CONCRETE FOOTINGS ARE INDICATED ON PLAN THUS=F-X. REFER TO FOOTING SCHEDULE FOR SIZE AND REINFORCING.
5. TOP OF FOOTING ELEVATION IS INDICATED ON PLAN THUS: (X'-X") & MEASURED FROM DATUM.
6. STEEL COLUMNS ARE INDICATED ON PLAN THUS C-X. REFER TO COLUMN SCHEDULE FOR SIZE AND BASE.
7. CONTROL JOINTS ARE INDICATED ON PLAN THUS: C.J.



A
S102
CANOPY FOUNDATION PLAN
1/4" = 1'-0"



FINAL SUBMISSION
APRIL 9, 2013

IF SHEET IS LESS THAN (30"x42") IT IS
A REDUCED PRINT; SCALE ACCORDINGLY

S102

 766 MIDDLE ST., FAIRHOPE, AL 36532 251-990-5778 ARCH. & ENGR. SEAL		NATURAL RESOURCES & ENVIRONMENTAL AFFAIRS SATISFACTORY TO DATE		P.W. DWG. NO.		DEPARTMENT OF THE NAVY NAVAL FACILITIES ENGINEERING COMMAND PANAMA CITY, FLORIDA	
		SAFETY DEPARTMENT SATISFACTORY TO DATE		DRAWN BY KM		CONSTRUCT NAVAL BRANCH HEALTH CLINIC PANAMA CITY CANOPY FOUNDATION PLAN	
		FIRE DEPARTMENT SATISFACTORY TO DATE		CHECKED BY NB			
		PUBLIC WORKS SUPERVISOR SATISFACTORY TO DATE		SUPERVISOR WWB			
				APPROVED DATE			
				PUBLIC WORKS OFFICER		SIZE F CODE IDENT. NO. FROM PROJ. NO. 520-13-200 SCALE 1/4"=1'-0"	
						NAVAL FACILITIES ENGINEERING COMMAND N/A CONSTR. CONTR. NO. T.O.# SHEET 3 OF 10	