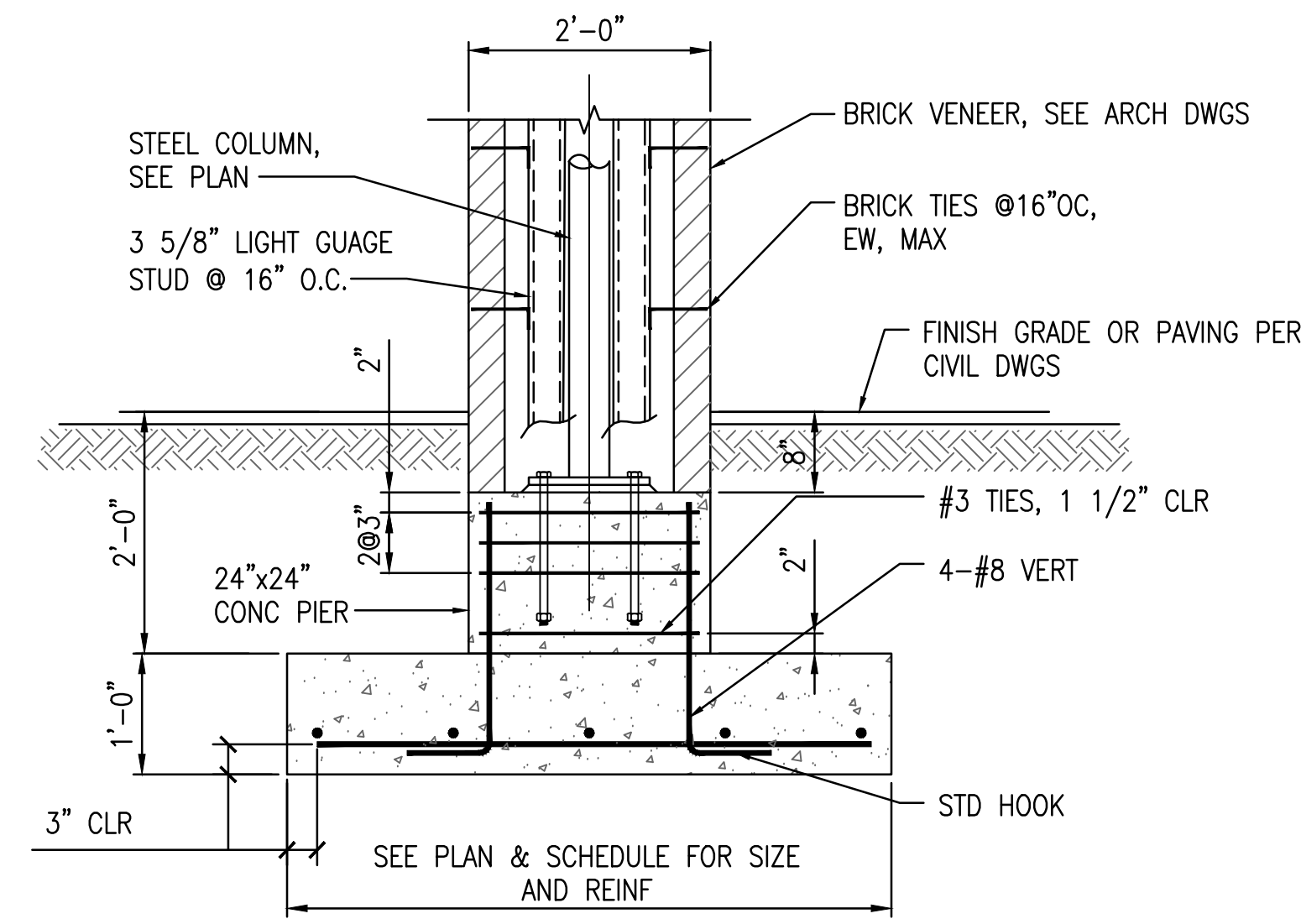
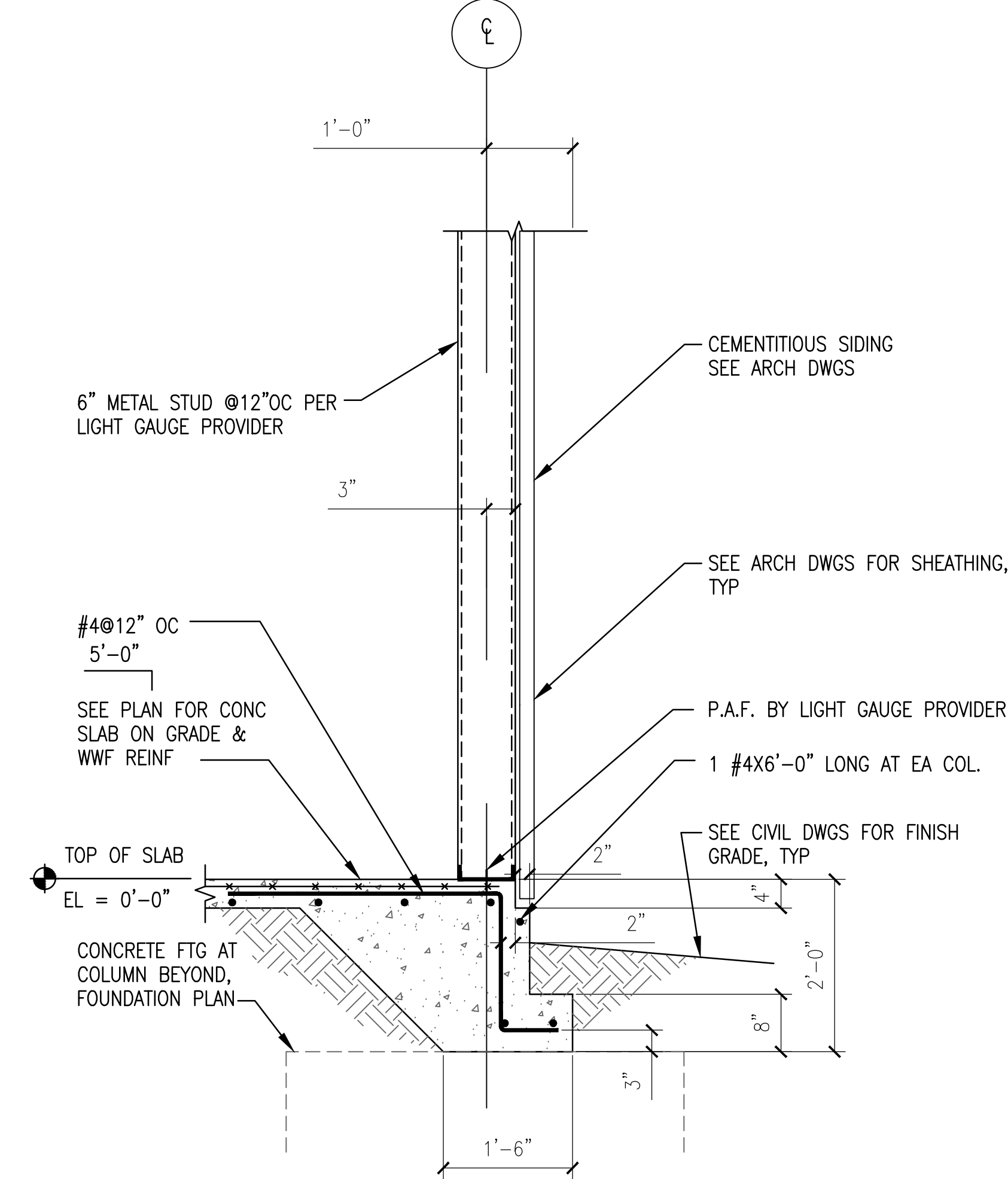


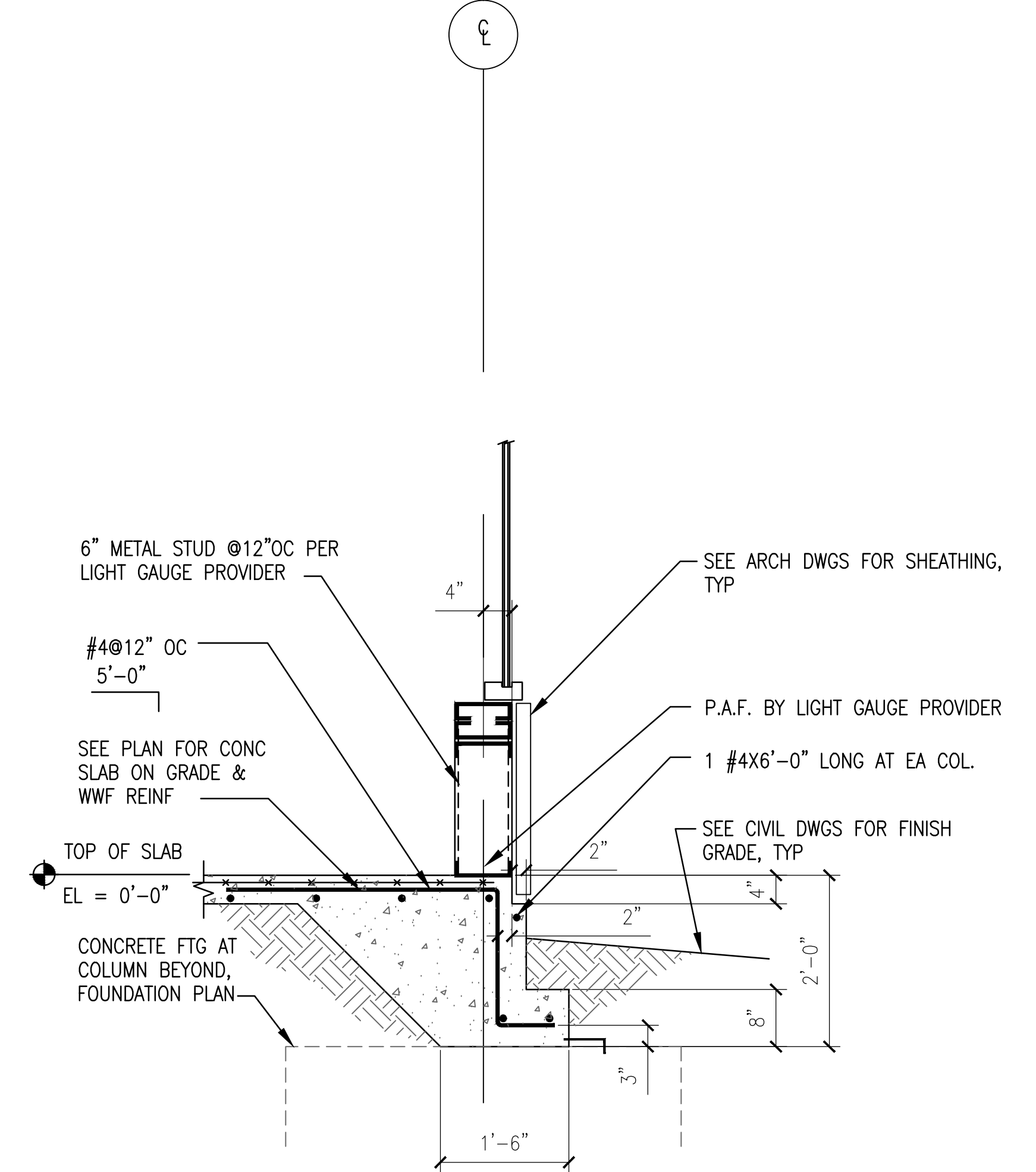
**1 FOUNDATION SECTION AT COVERED WALK COLUMN**  
S101 SCALE: 3/4"=1'-0"



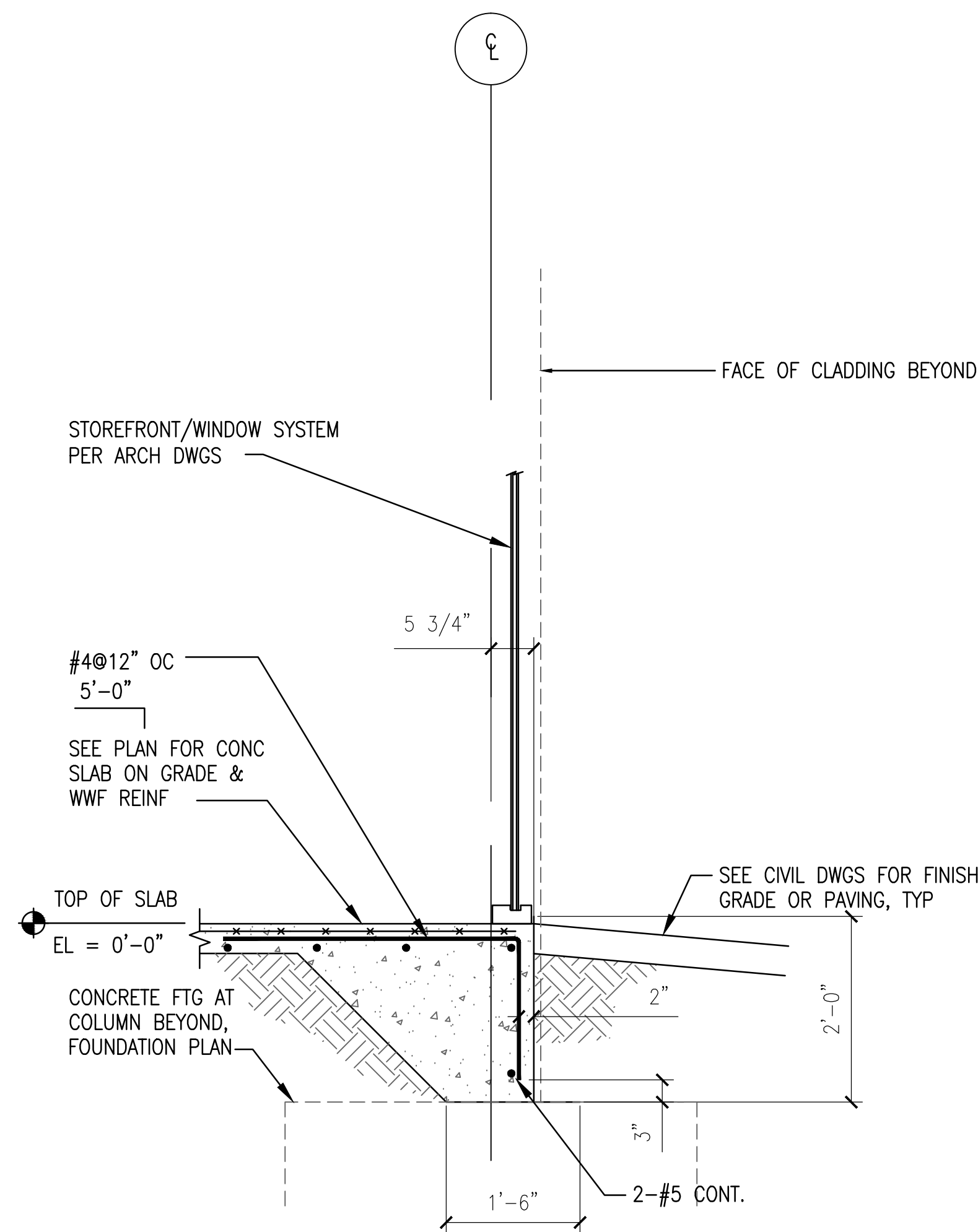
**2 FOUNDATION SECTION AT COVERED WALK COLUMN**  
S101 SCALE: 3/4"=1'-0"



**3 FOUNDATION SECTION AT EXTERIOR WALL**  
S101 SCALE: 3/4"=1'-0"



**4 FOUNDATION SECTION AT SILL**  
S101 SCALE: 3/4"=1'-0"



**5 FOUNDATION SECTION AT STOREFRONT**  
S101 SCALE: 3/4"=1'-0"

FINAL SUBMISSION  
APRIL 9, 2013

IF SHEET IS LESS THAN (30"x42") IT IS  
A REDUCED PRINT; SCALE ACCORDINGLY

S300



<b>BES</b> DESIGN/BUILD 766 MIDDLE ST., FAIRHOPE, AL 36532 251-990-5778 ARCH. & ENGR. SEAL FLORIDA BES DESIGN/BUILD LLC No. 29795 CERTIFICATE OF AUTHORIZATION	NATURAL RESOURCES & ENVIRONMENTAL AFFAIRS SATISFACTORY TO DATE	P.W. DWG. NO.	DEPARTMENT OF THE NAVY NAVAL FACILITIES ENGINEERING COMMAND PANAMA CITY, FLORIDA
	SAFETY DEPARTMENT SATISFACTORY TO DATE	DRAWN BY <b>KM</b>	CONSTRUCT NAVAL BRANCH HEALTH CLINIC PANAMA CITY
	FIRE DEPARTMENT SATISFACTORY TO DATE	CHECKED BY <b>NB</b>	<b>FOUNDATION SECTIONS</b>
	PUBLIC WORKS SUPERVISOR SATISFACTORY TO DATE	SUPERVISOR <b>WVB</b>	SIZE <b>F</b> CODE IDENT. NO. <b>N/A</b> HOMC PROJ. NO. 520-13-200 CONSTR. CONTR. NO. <b>N/A</b> SCALE <b>1/4"=1'-0"</b> MACC. T.O.# SHEET <b>9</b> OF <b>10</b>
		APPROVED DATE	PUBLIC WORKS OFFICER