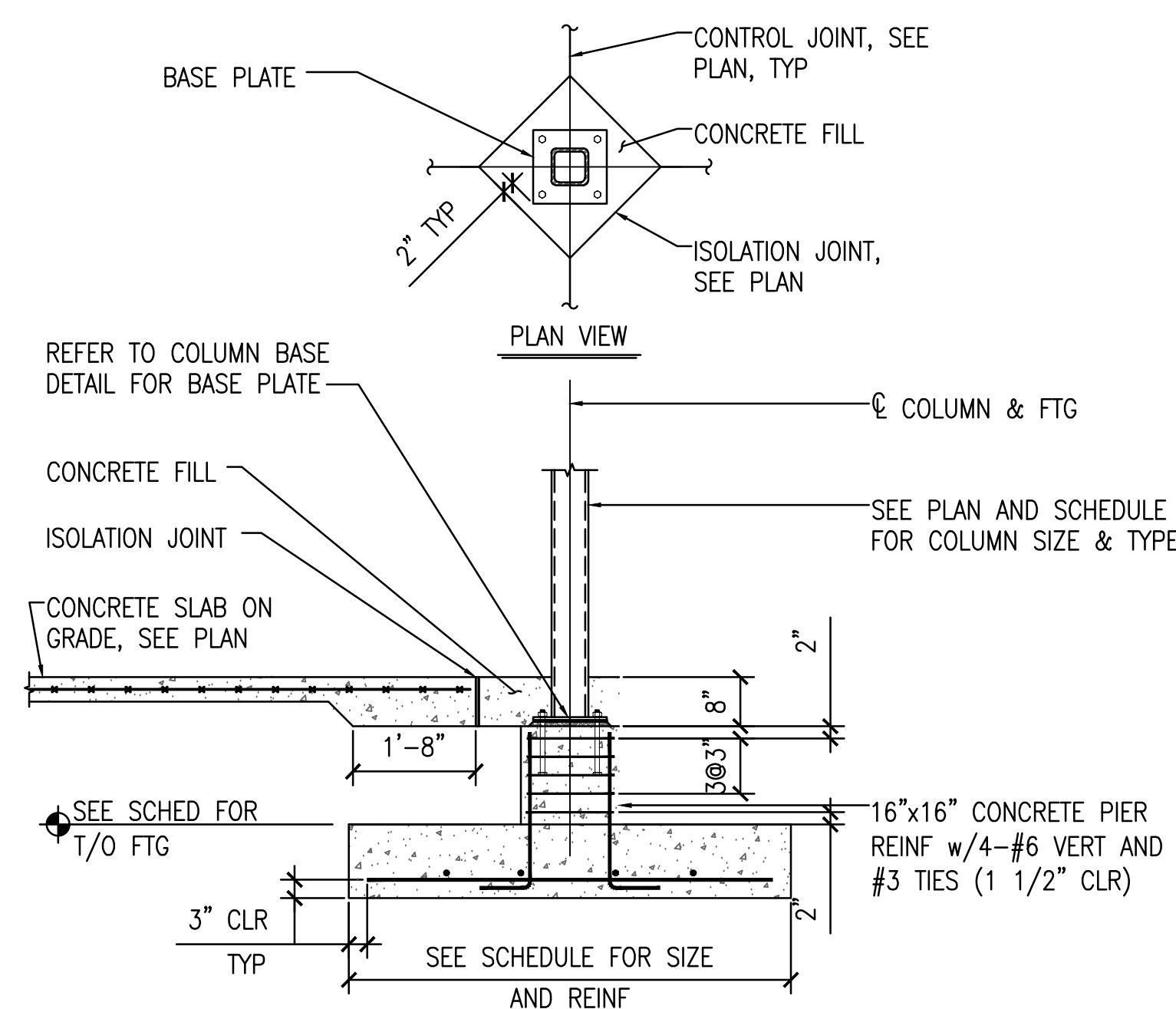
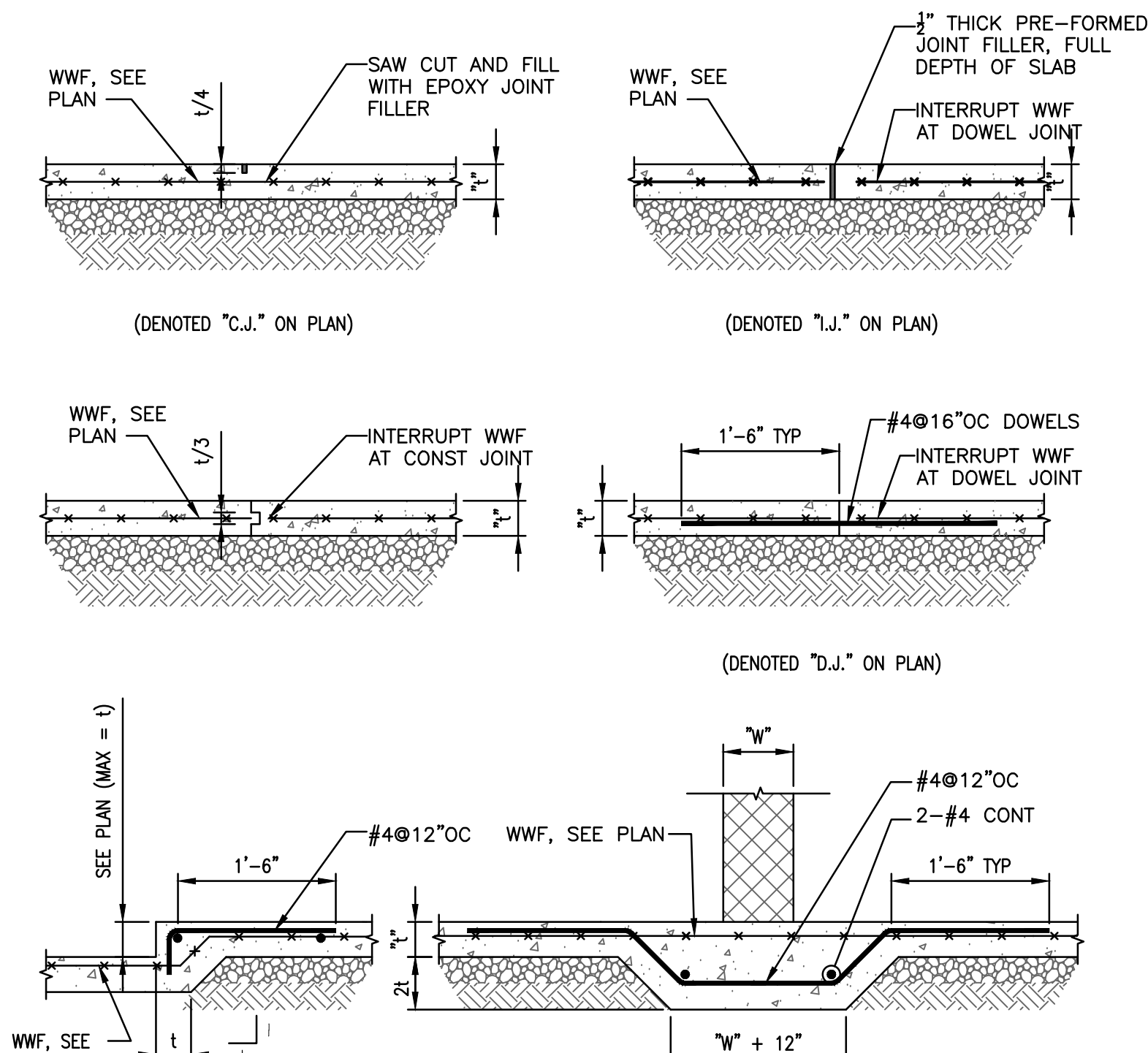


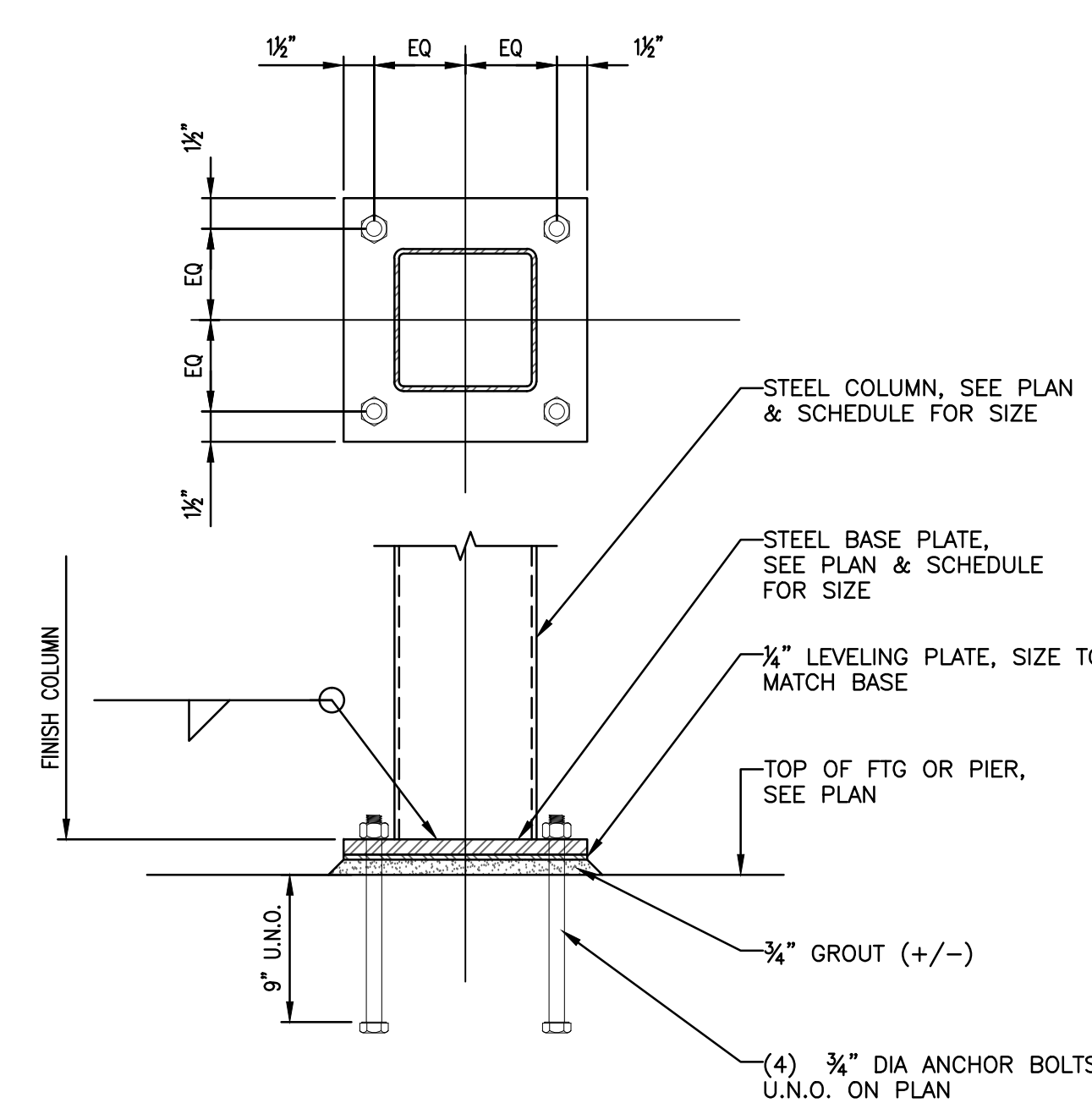
A TYPICAL HSS COLUMN FOOTING
SCALE: 1/2" = 1'-0"



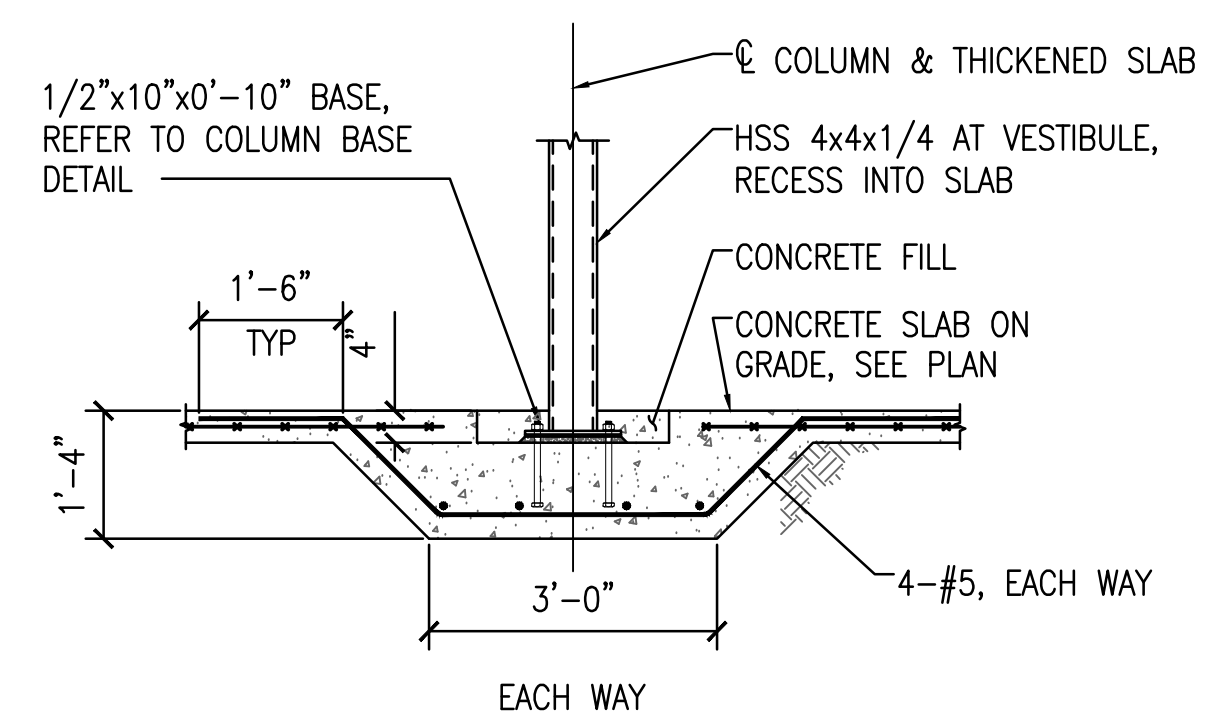
B TYPICAL CANOPY COLUMN FOOTING
SCALE: 1/2" = 1'-0"



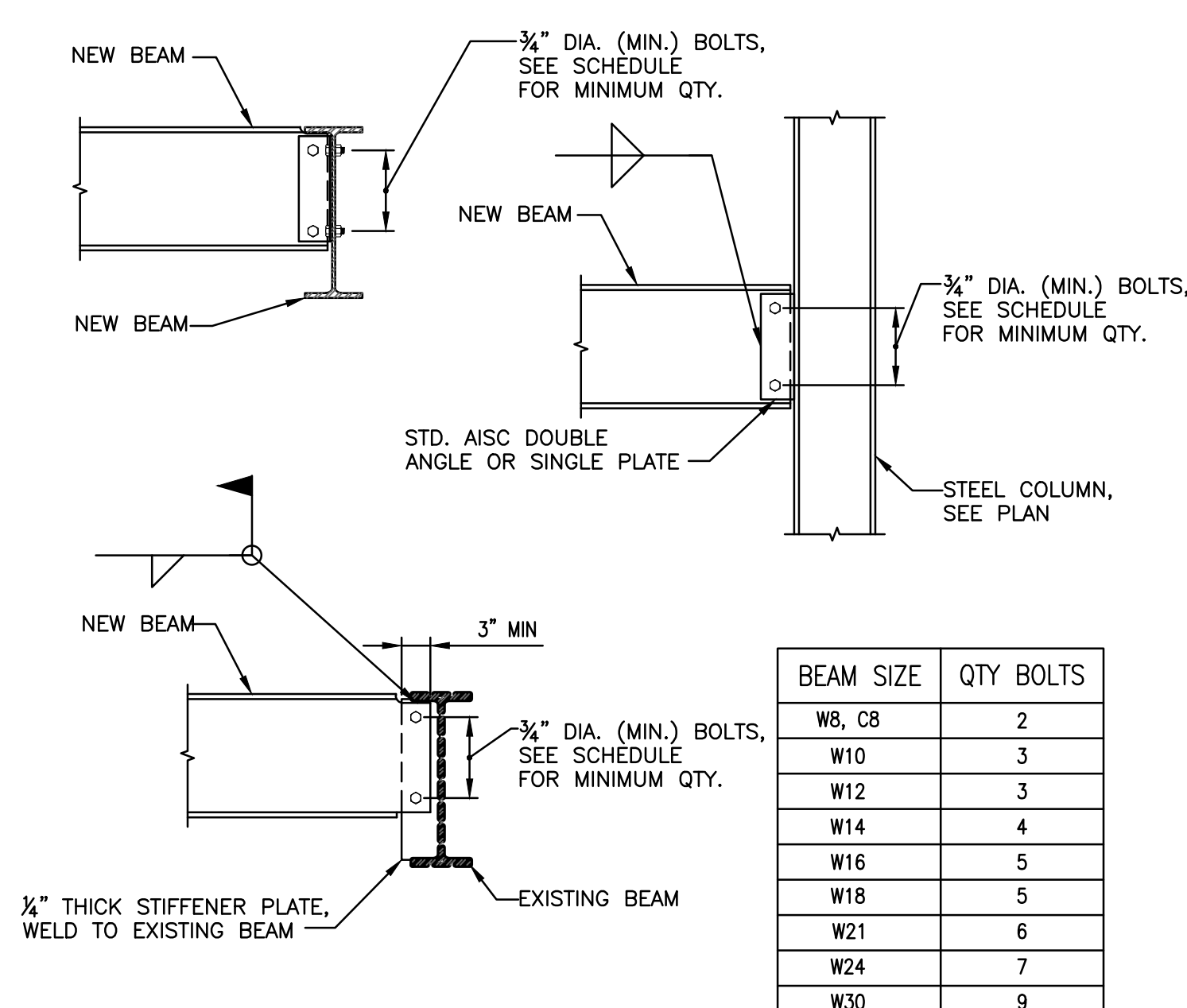
C TYPICAL SLAB ON GRADE DETAILS
SCALE: 3/4" = 1'-0"



D TYPICAL HSS COLUMN BASE
SCALE: 1 1/2" = 1'-0"

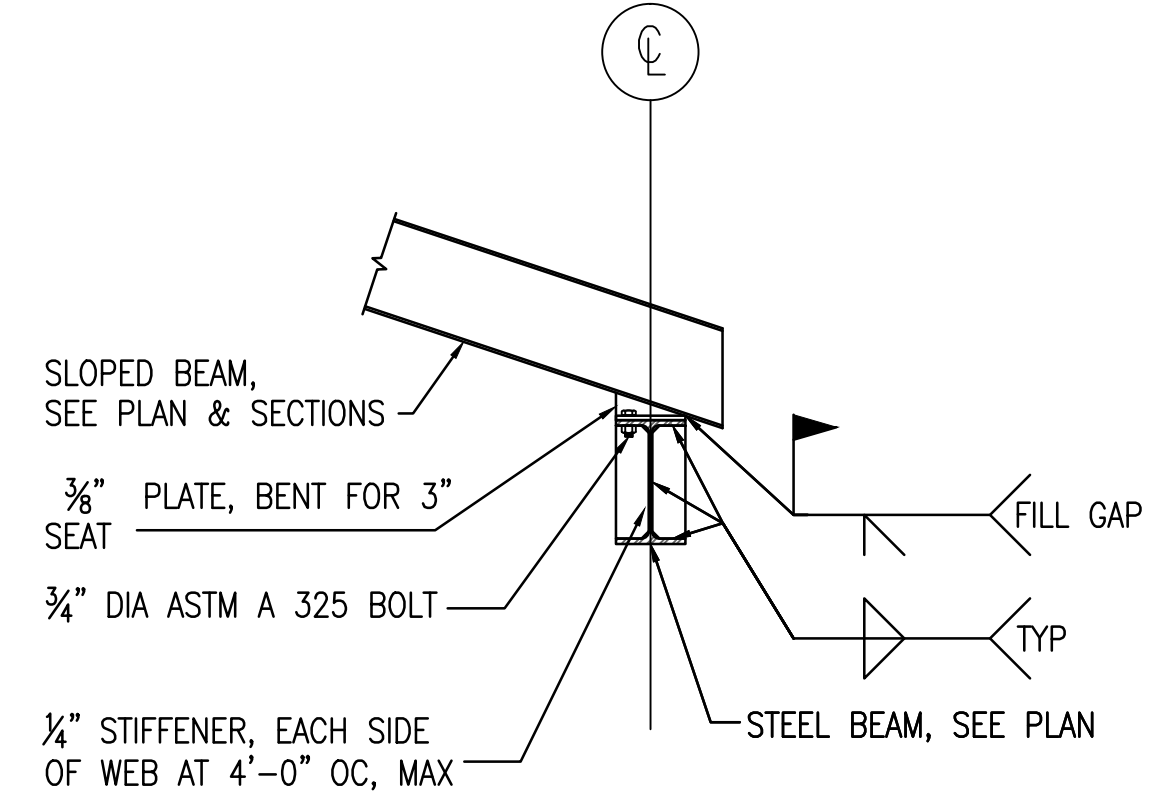


E RECESSED VESTIBULE COLUMN
SCALE: 1/2" = 1'-0"



- NOTES:**
- ALL BEAM CONNECTIONS SHALL BE DESIGNED FOR THE MAXIMUM OF THE FOLLOWING:
A. THE FULL UNIFORM LOAD CAPACITY OF THE MEMBER WITH DUE CONSIDERATION OF CONCENTRATED LOADS.
B. MINIMUM REACTION OF 6 KIPS.
C. MINIMUM QUANTITY OF BOLTS PER SCHEDULE.
 - BOLTED CONNECTIONS SHALL USE NO LESS THAN TWO 3/4" DIA. ASTM A 325N OR A 490 HIGH STRENGTH BOLTS. CONFORM TO AISC SPECIFICATION "STRUCTURAL JOINTS USING ASTM A 325 OR A 490 BOLTS".
 - UNLESS OTHERWISE INDICATED, ALL WELDED CONNECTIONS SHALL USE E70XX ELECTRODES.

F TYPICAL AISC SHEAR CONNECTIONS
SCALE: 3/4" = 1'-0"



G TYPICAL SLOPED BEAM
SCALE: 3/4" = 1'-0"

FINAL SUBMISSION
APRIL 9, 2013

IF SHEET IS LESS THAN (30"x42") IT IS
A REDUCED PRINT; SCALE ACCORDINGLY

S501



 766 MIDDLE ST., FARMHOPE, AL 36532 251-990-5778 ARCH. & ENGR. SEAL 	NATURAL RESOURCES & ENVIRONMENTAL AFFAIRS		P.W. DWG. NO.		DEPARTMENT OF THE NAVY NAVAL FACILITIES ENGINEERING COMMAND	
	SAFETY DEPARTMENT		DRAWN BY KM		NAVAL SUPPORT ACTIVITY PANAMA CITY, FLORIDA	
	FIRE DEPARTMENT		CHECKED BY NB		CONSTRUCT NAVAL BRANCH HEALTH CLINIC PANAMA CITY	
	PUBLIC WORKS SUPERVISOR		SUPERVISOR WWB		TYPICAL DETAILS	
APPROVED		DATE		SIZE F	CODE IDENT. NO.	NAVY FAC DRAWING NO.
T.O.#		MACC.		CONSTR. CONTR. NO.		N/A
SCALE 1/4"=1'-0"		T.O.#		SHEET		8 OF 10