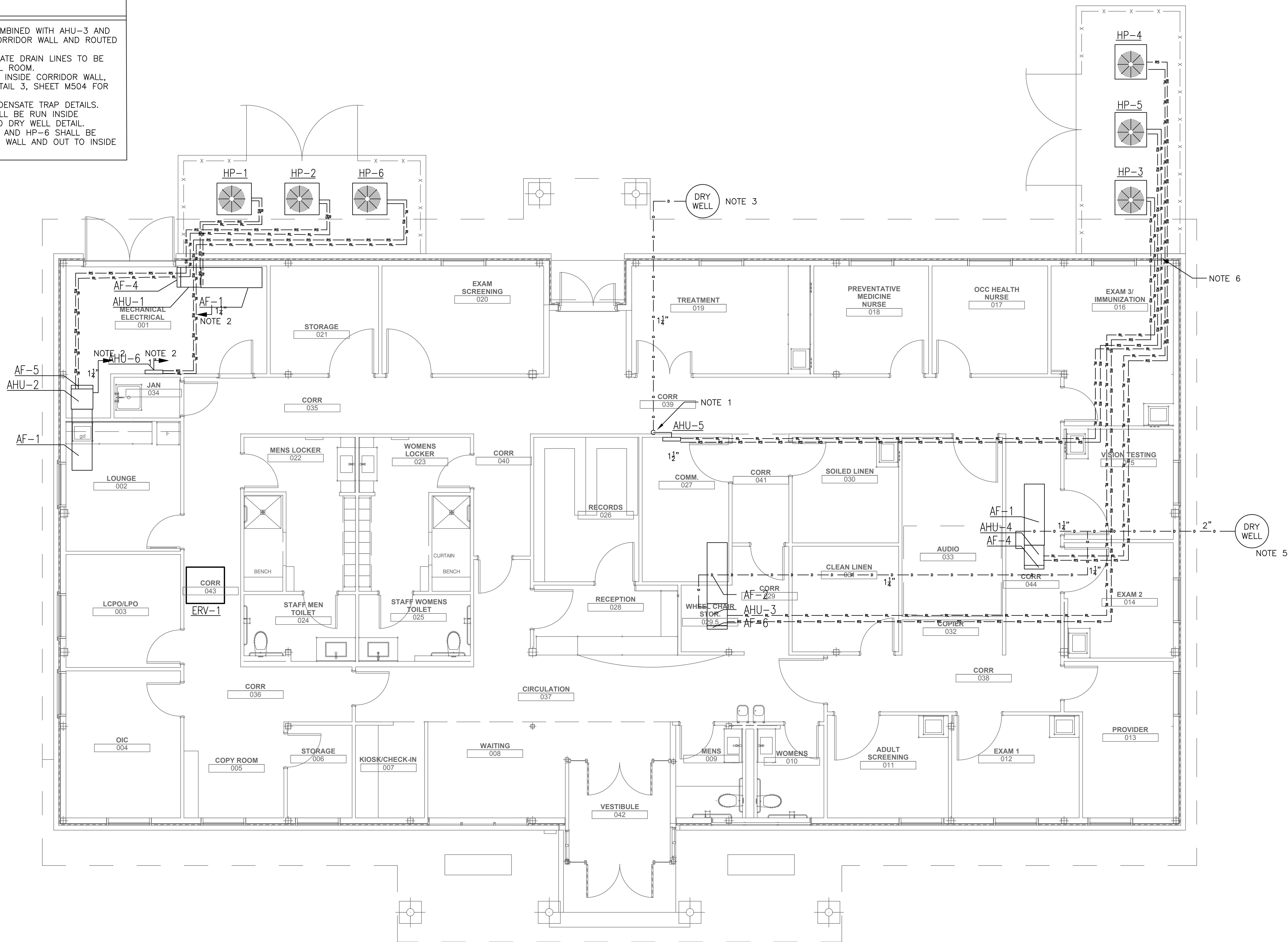


NOTES

1. AHU-5 CONDENSATE DRAIN TO BE COMBINED WITH AHU-3 AND AHU-4 CONDENSATE DRAIN IN THE CORRIDOR WALL AND ROUTED OUT TO DRY WELL.
2. AHU-1, AHU-2 AND AHU-6 CONDENSATE DRAIN LINES TO BE ROUTED TO HUB DRAIN IN MECHANICAL ROOM.
3. AHU-5 CONDENSATE LINE TO BE RUN INSIDE CORRIDOR WALL, THROUGH SLAB TO DRY WELL SEE DETAIL 3, SHEET M504 FOR DRY WELL DETAIL.
4. SEE DETAIL 3, SHEET M502 FOR CONDENSATE TRAP DETAILS.
5. AHU-3 AND AHU-4 CONDENSATE SHALL BE RUN INSIDE INTERIOR WALL THROUGH SLAB AND TO DRY WELL DETAIL.
6. REFRIGERANT LINES FOR HP-3, HP-5 AND HP-6 SHALL BE RUN FROM OVERHEAD DOWN EXTERIOR WALL AND OUT TO INSIDE FENCED ENCLOSURE.



1 MECHANICAL PLAN - REFRIGERANT & CONDENSATE LINES
MP101 SCALE: 1/4" = 1'-0"

FINAL SUBMISSION
APRIL 9, 2013

IF SHEET IS LESS THAN (30"x42") IT IS
A REDUCED PRINT; SCALE ACCORDINGLY

MP101

 786 MIDDLE ST., PANAMA, FL 32002 251-990-5778 ARCH. & ENGR. SEAL 	NATURAL RESOURCES & ENVIRONMENTAL AFFAIRS SATISFACTORY TO DATE	P.W. DWG. NO.	DEPARTMENT OF THE NAVY NAVAL SUPPORT ACTIVITY PANAMA CITY, FLORIDA
	SAFETY DEPARTMENT SATISFACTORY TO DATE	DRAWN BY R. LONDOÑO	CONSTRUCT NAVAL BRANCH HEALTH CLINIC PANAMA CITY
	FIRE DEPARTMENT SATISFACTORY TO DATE	CHECKED BY R. DeLOACH	MECHANICAL PLAN REFRIGERANT & CONDENSATE PIPING
	PUBLIC WORKS SUPERVISOR SATISFACTORY TO DATE	SUPERVISOR B. COFFMAN	NAVFAC DRAWING NO. N/A
	APPROVED DATE	SIZE F	CODE IDENT. NO. N/A
		PROJ. NO. 520-13-200	CONSTR. CONTR. NO.
		SCALE	MACC. T.O.# SHEET 6 OF 9