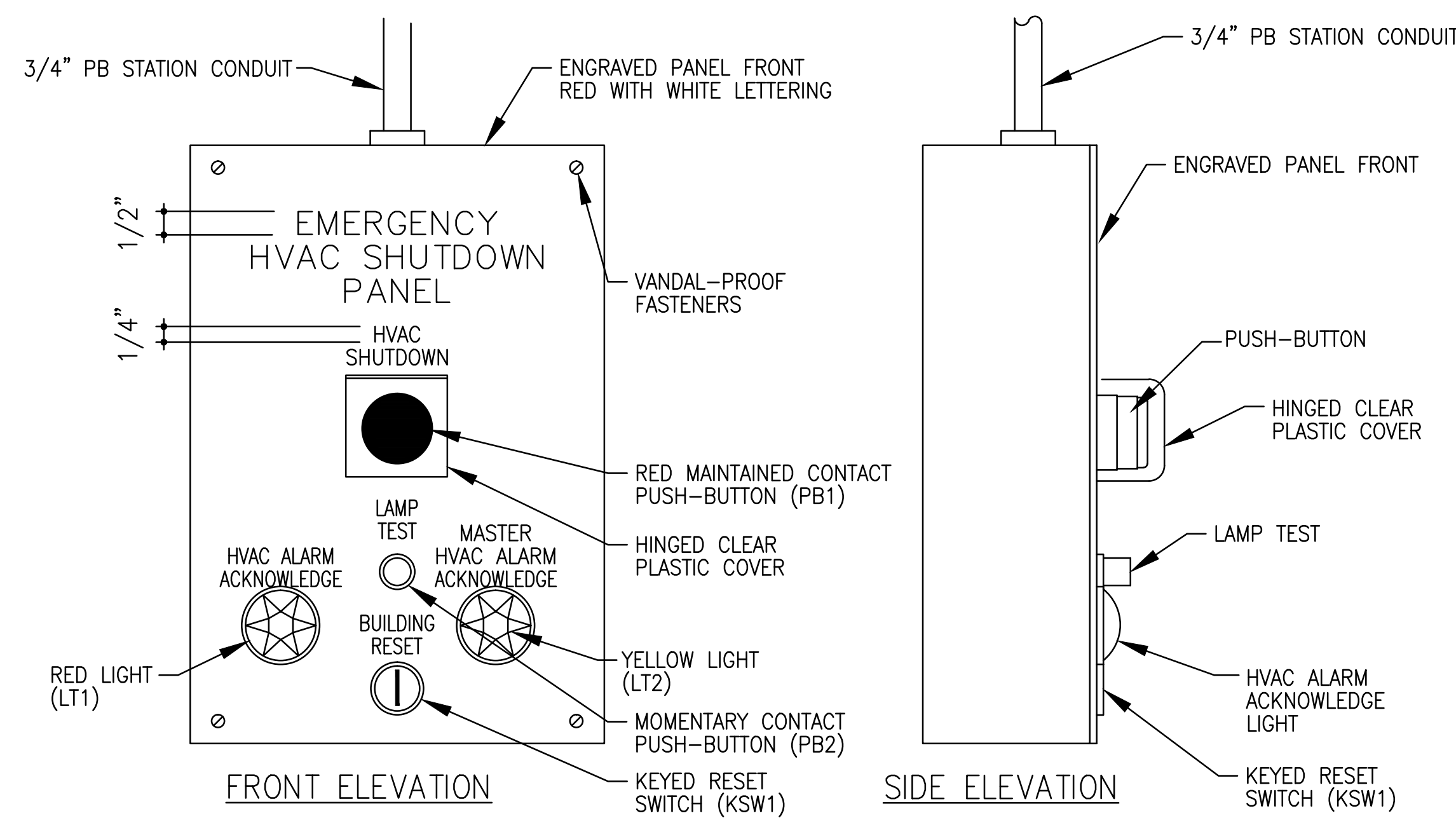
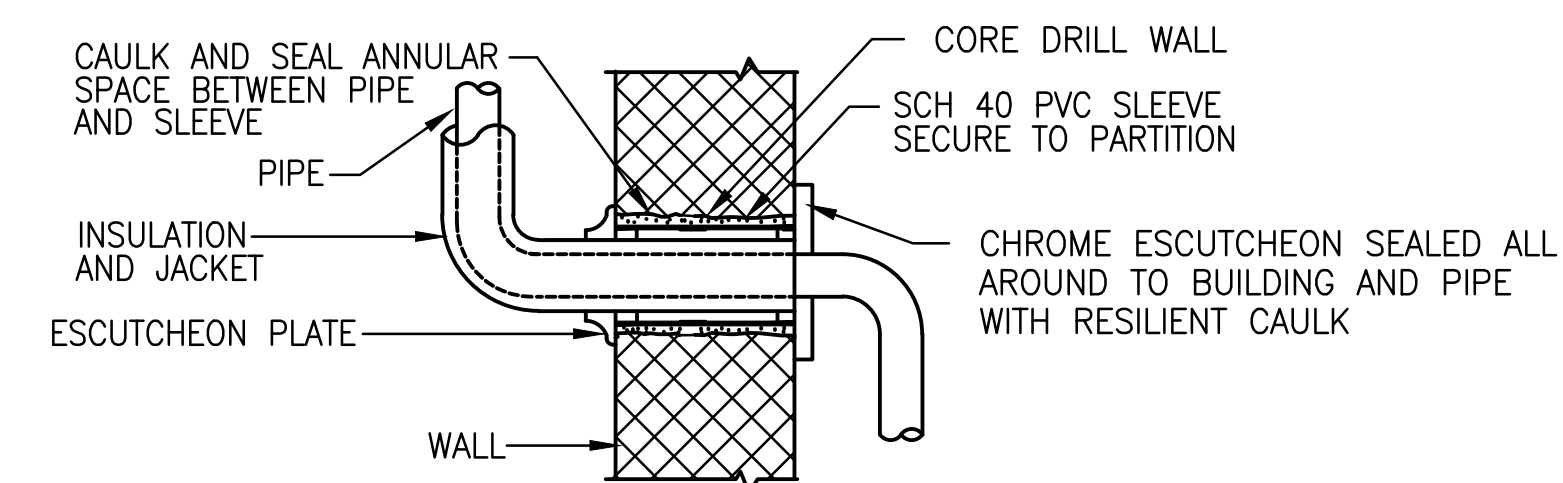


**3**  
M504  
NTS  
**DRY WELL DETAIL**



**1**  
M504  
NTS  
**HVAC SHUTDOWN PANEL**  
(LOCATE IN LCPO/LPO ROOM 003)



NOTE: WHERE PIPING IS EXPOSED AT FINISH WALLS, FLUSH MOUNT SLEEVE AND PROVIDE ESCUTCHEON PLATE.

**4**  
M504  
NTS  
**PIPE PENETRATION THRU WALLS**

FINAL SUBMISSION  
MARCH 25, 2013

IF SHEET IS LESS THAN (30"x42") IT IS  
A REDUCED PRINT; SCALE ACCORDINGLY

M502



<b>BES</b> DESIGN/BUILD 786 MIDDLE ST., PANORAMA, AL 36532 251-990-5778 ARCH. & ENGR. SEAL FLORIDA BES DESIGN/BUILD LLC No. 29785 STATE OF FLORIDA PROFESSIONAL ENGINEER	NATURAL RESOURCES & ENVIRONMENTAL AFFAIRS	P.W. DWG. NO.	DEPARTMENT OF THE NAVY NAVAL SUPPORT ACTIVITY PANAMA CITY, FLORIDA
	SAFETY DEPARTMENT	DRAWN BY R. LONDOÑO	CONSTRUCT NAVAL BRANCH HEALTH CLINIC PANAMA CITY
	FIRE DEPARTMENT	CHECKED BY R. DeLOACH	MECHANICAL DETAILS
	PUBLIC WORKS SUPERVISOR	SUPERVISOR B. COFFMAN	NAVAFAC DRAWING NO. N/A
	APPROVED	DATE	SIZE F
			CODE IDENT. NO.
			CONSTR. CONTR. NO.
			SCALE
			MACC.
			T.O.#
			SHEET 8 OF 9