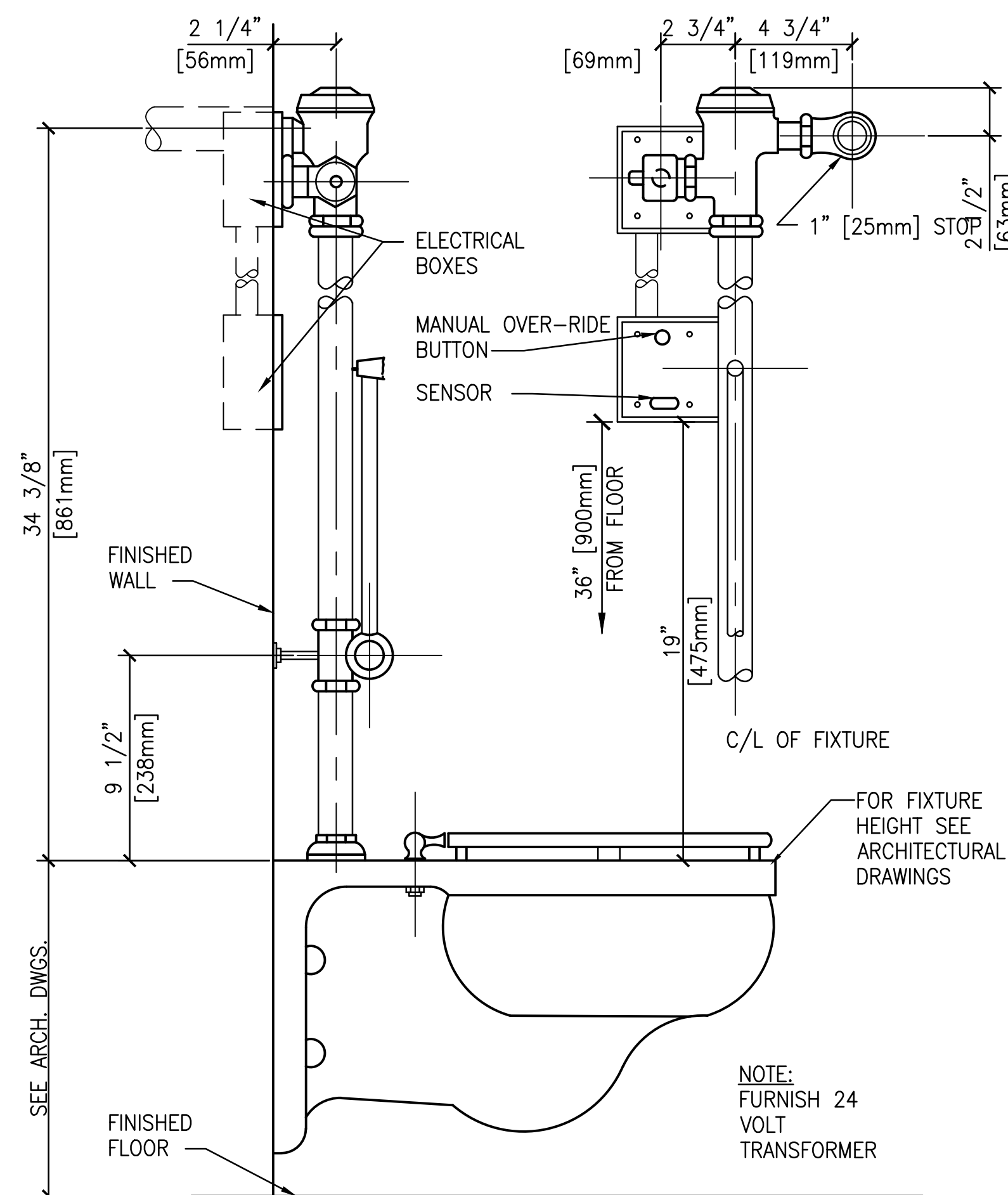
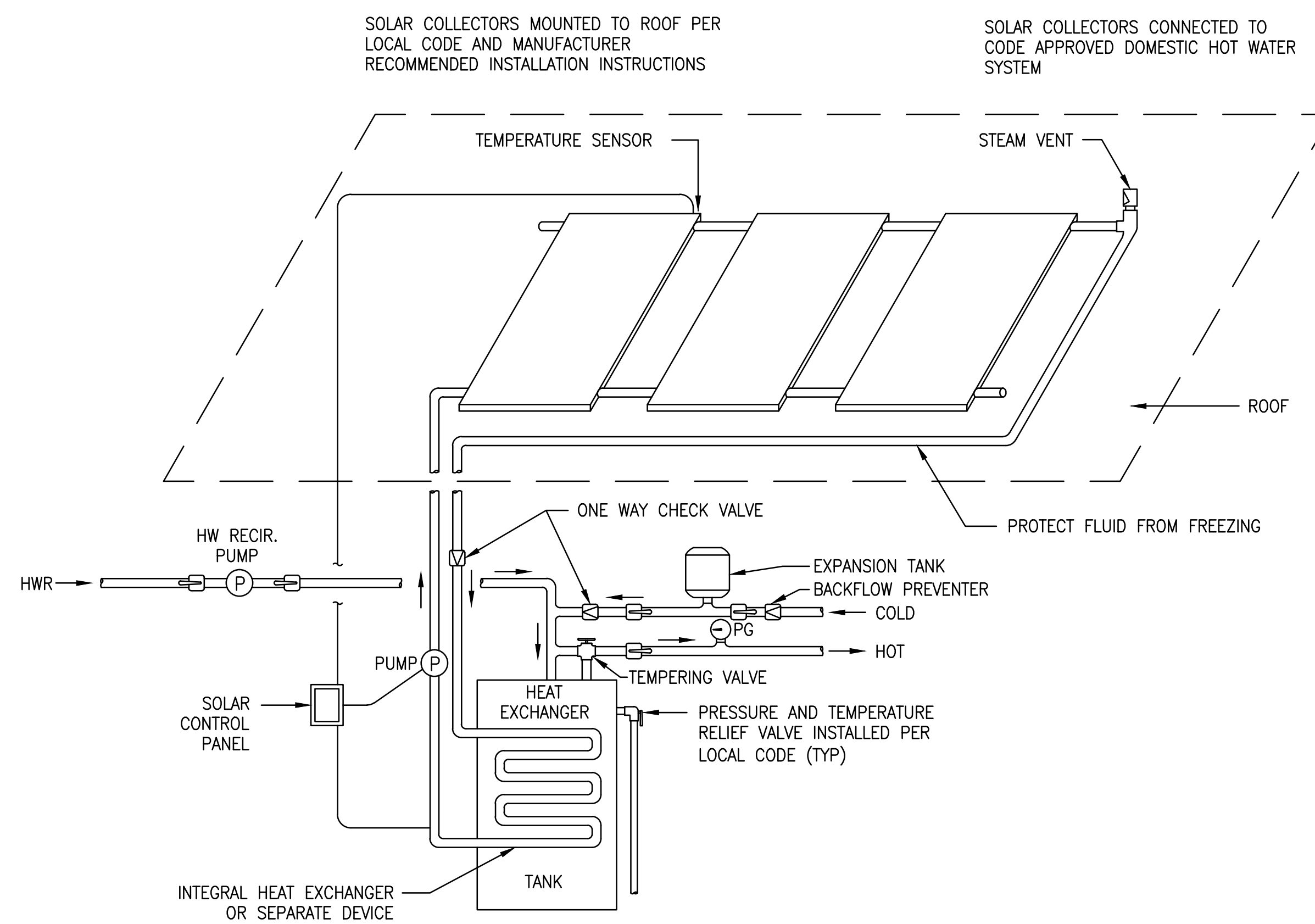


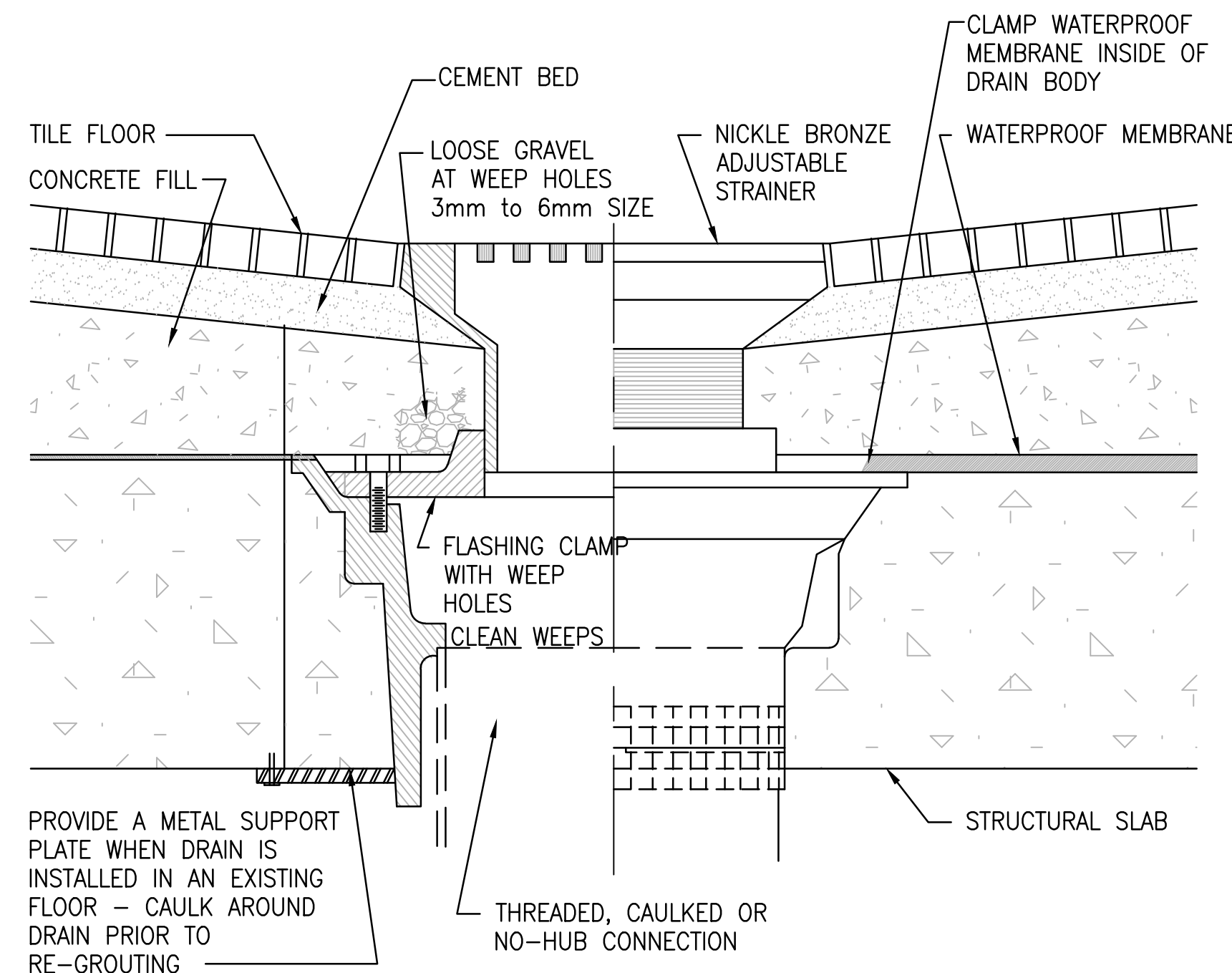
1 TYPICAL WHEELCHAIR LAVATORY DETAIL
SCALE: NONE



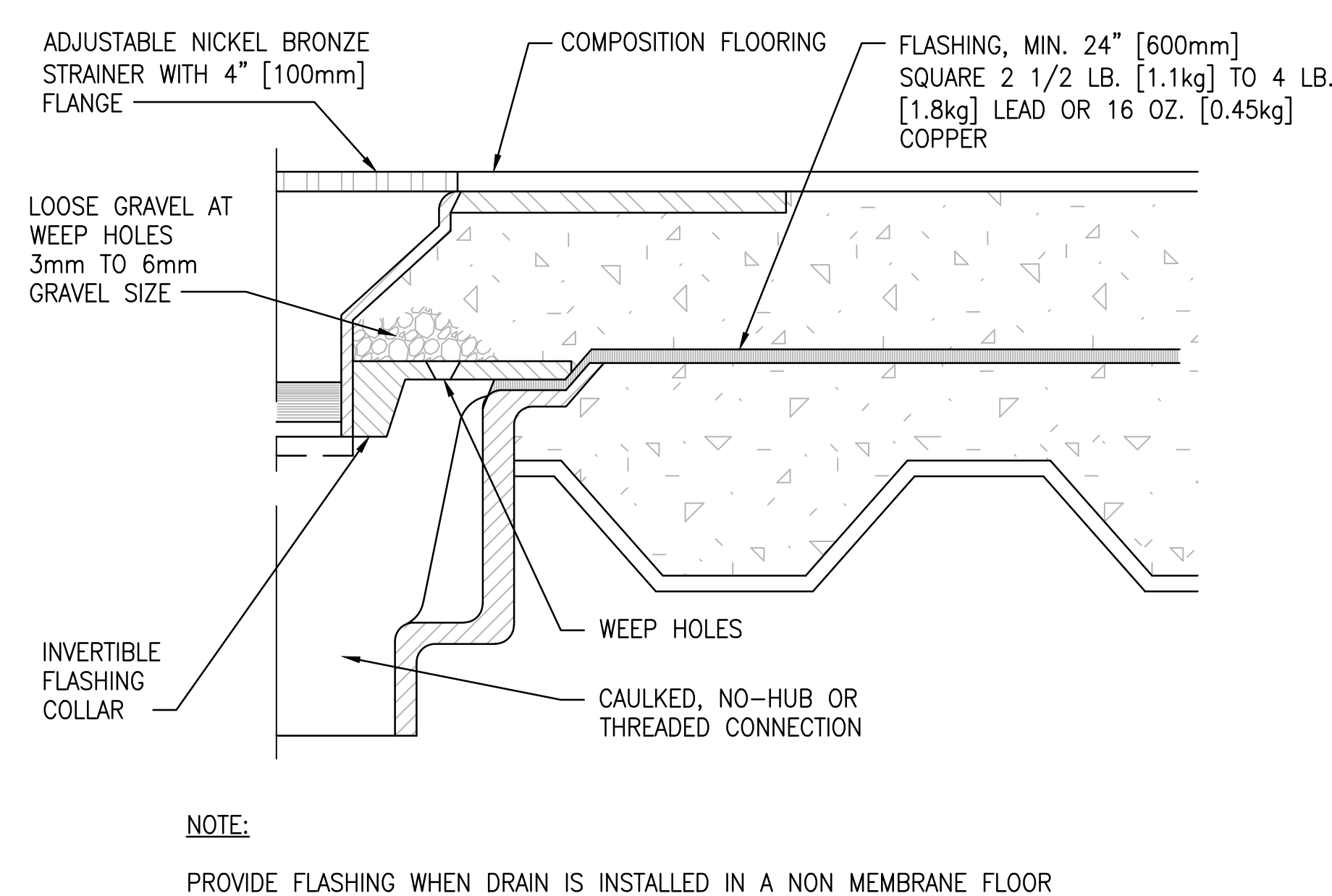
2 WATER CLOSET DETAIL - SENSOR OPERATED
SCALE: NONE



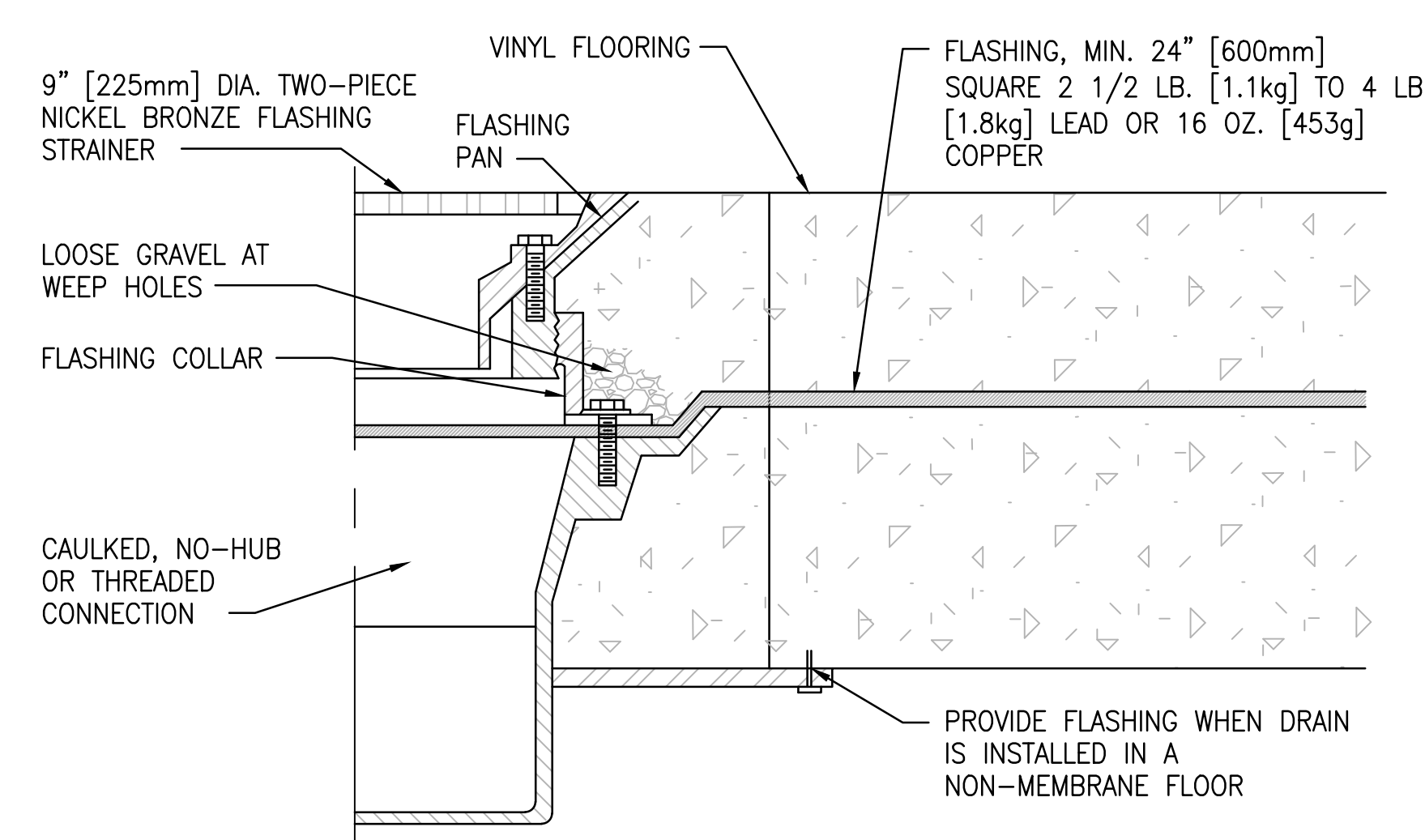
4 SOLAR CLOSED LOOP INDIRECT HEATING SYSTEM
SCALE: NONE



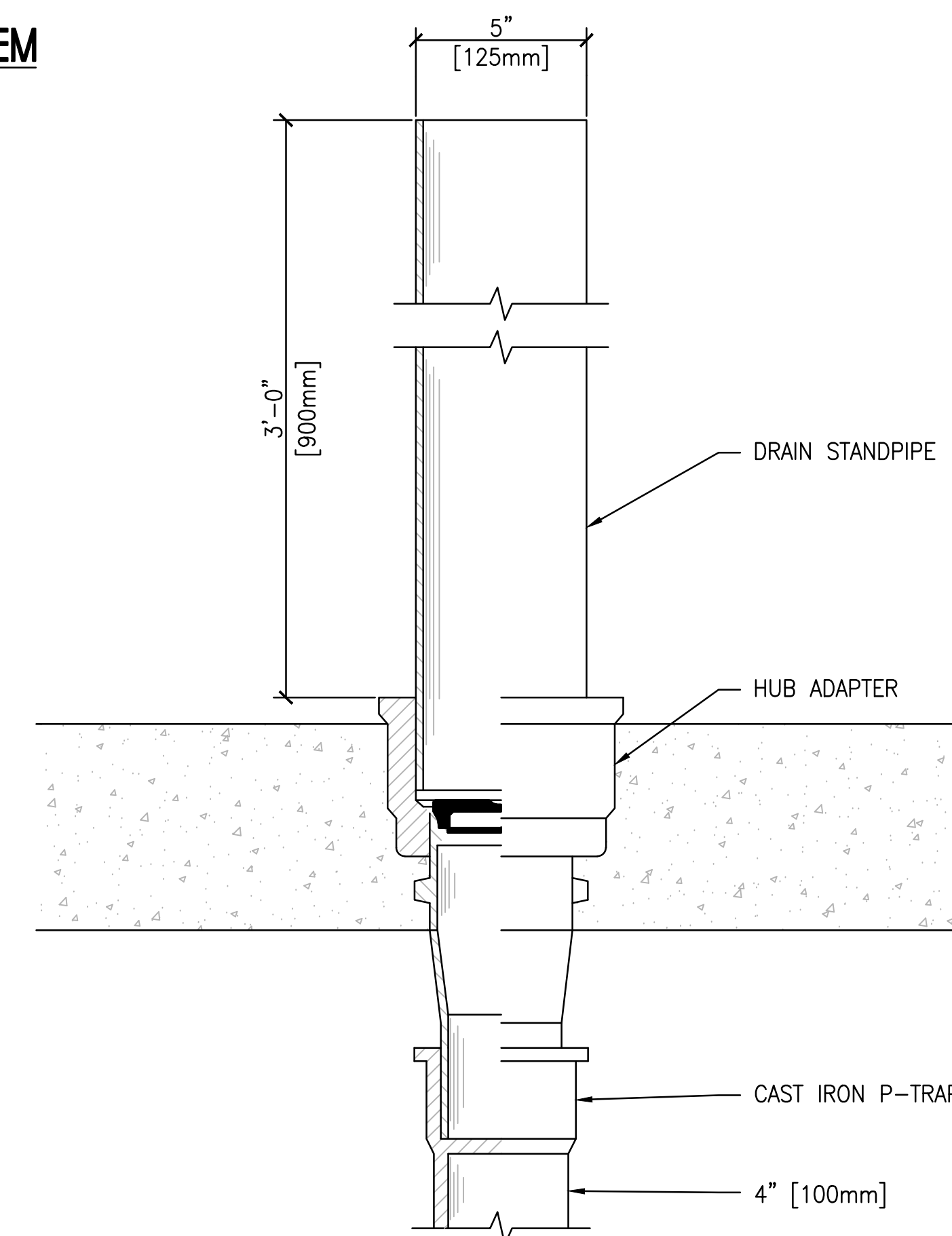
5 TYPE 'C' FLOOR DRAIN DETAIL
SCALE: NONE



6 TYPE 'D' FLOOR DRAIN DETAIL
SCALE: NONE



7 TYPE 'F' FLOOR DRAIN DETAIL
SCALE: NONE




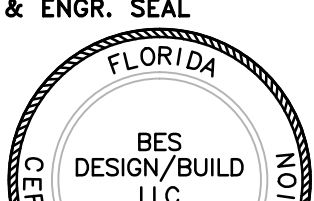
8 HUB DRAIN AND STANDPIPE
SCALE: NONE

FINAL SUBMISSION
APRIL 9, 2013

IF SHEET IS LESS THAN (30"x42") IT IS
A REDUCED PRINT; SCALE ACCORDINGLY

P500



<div> 766 MIDDLE ST., FARMHOPE, AL 36532 251-990-5778 ARCH. & ENGR. SEAL</div> <div></div>	NATURAL RESOURCES & ENVIRONMENTAL AFFAIRS		P.W. DWG. NO.		DEPARTMENT OF THE NAVY		NAVAL FACILITIES ENGINEERING COMMAND		
	SAFETY DEPARTMENT		DRAWN BY JLL		NAVAL SUPPORT ACTIVITY				
	FIRE DEPARTMENT		CHECKED BY WWB		PANAMA CITY, FLORIDA				
	PUBLIC WORKS SUPERVISOR		SUPERVISOR WWB		CONSTRUCT NAVAL BRANCH HEALTH CLINIC PANAMA CITY				
			APPROVED		DATE		PLUMBING DETAILS		
			PUBLIC WORKS OFFICER						
				SIZE F		CODE IDENT. NO.		NAVFAC DRAWING NO. N/A	
				HONC PROJ. NO. 520-13-200		CONSTR. CONTR. NO.			
				SCALE NONE		MACC.		T.O.# _____ SHEET 6 OF 8	