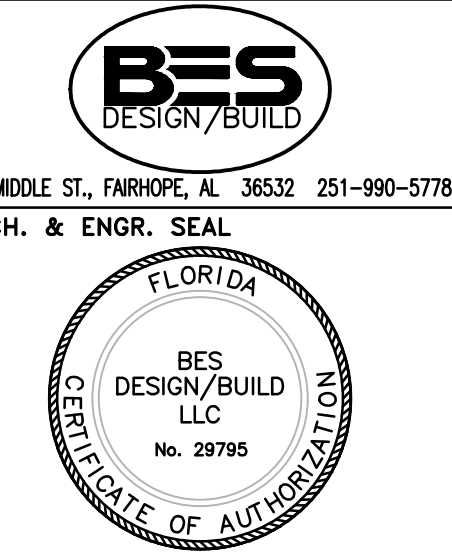


0 2' 4' 8'
SCALE: 3/16" = 1'-0"

FINAL SUBMISSION
APRIL 9, 2013

IF SHEET IS LESS THAN (30"x42") IT IS
A REDUCED PRINT; SCALE ACCORDINGLY

EL102



NATURAL RESOURCES & ENVIRONMENTAL AFFAIRS		P.W. DWG. NO.
SATISFACTORY TO DATE		
SATISFACTORY TO DATE	SAFETY DEPARTMENT	DRAWN BY GWS
SATISFACTORY TO DATE	FIRE DEPARTMENT	CHECKED BY KDE
SATISFACTORY TO DATE	PUBLIC WORKS SUPERVISOR	SUPERVISOR WWB
SATISFACTORY TO DATE		APPROVED DATE
		PUBLIC WORKS OFFICER

DEPARTMENT OF THE NAVY		NAVAL FACILITIES ENGINEERING COMMAND	
NAVAL SUPPORT ACTIVITY		NAVAL SUPPORT ACTIVITY	
PANAMA CITY, FLORIDA		PANAMA CITY, FLORIDA	
CONSTRUCT NAVAL BRANCH HEALTH CLINIC		CONSTRUCT NAVAL BRANCH HEALTH CLINIC	
PANAMA CITY		PANAMA CITY	
EXTERIOR LIGHTING PLAN		EXTERIOR LIGHTING PLAN	
SIZE F	CODE IDENT. NO. N/A	NAVFAC DRAWING NO. N/A	
HQMC PROJ. NO. 520-13-200	CONSTR. CONTR. NO.		
SCALE 3/16"=1'-0"	MACC.	T.O.#	SHEET 4 OF 13