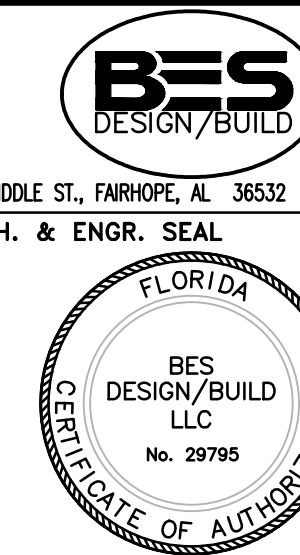


- 1 SPLIT WIRED RECEPTACLE TO SWITCH MOUNTED ABOVE COUNTER FOR SINK DISPOSAL UNIT. FURNISH #14/2 WITH GROUND TYPE SO FLEXIBLE CORD WITH MOLDED END MALE PLUG.
- 2 CRASH CART RECHARGING STATION RECEPTACLE, 208V, 20A, 1 PHASE, 2-POLE, 3W, ISOLATED GROUNDING TYPE. MOUNT 48" A.F.F.
- 3 IMMUNIZATION REFRIGERATOR RECEPTACLE. CONFIRM EXACT LOCATION OF IMMUNIZATION REFRIGERATOR PRIOR TO ROUGH-IN.

EP101



NATURAL RESOURCES & ENVIRONMENTAL AFFAIRS		P.W. DWG. NO.		DEPARTMENT OF THE NAVY NAVAL FACILITIES ENGINEERING COMMAND NAVAL SUPPORT ACTIVITY PANAMA CITY, FLORIDA	
778	SATISFACTORY TO DATE	DRAWN BY GWS	CONSTRUCT NAVAL BRANCH HEALTH CLINIC PANAMA CITY POWER PLAN	SIZE F	CODE IDENT. NO. N/A
	SAFETY DEPARTMENT	CHECKED BY KDE			
	FIRE DEPARTMENT	SUPERVISOR WVB			
	PUBLIC WORKS SUPERVISOR	APPROVED DATE			
	SATISFACTORY TO DATE	PUBLIC WORKS OFFICER	HGM PROJ. NO. 520-13-200 SCALE 1/4"=1'-0"	CONSTR. CONTR. NO. MACC. T.O.#	NAF FAC DRAWING NO. N/A
			SHEET 6 OF 13		