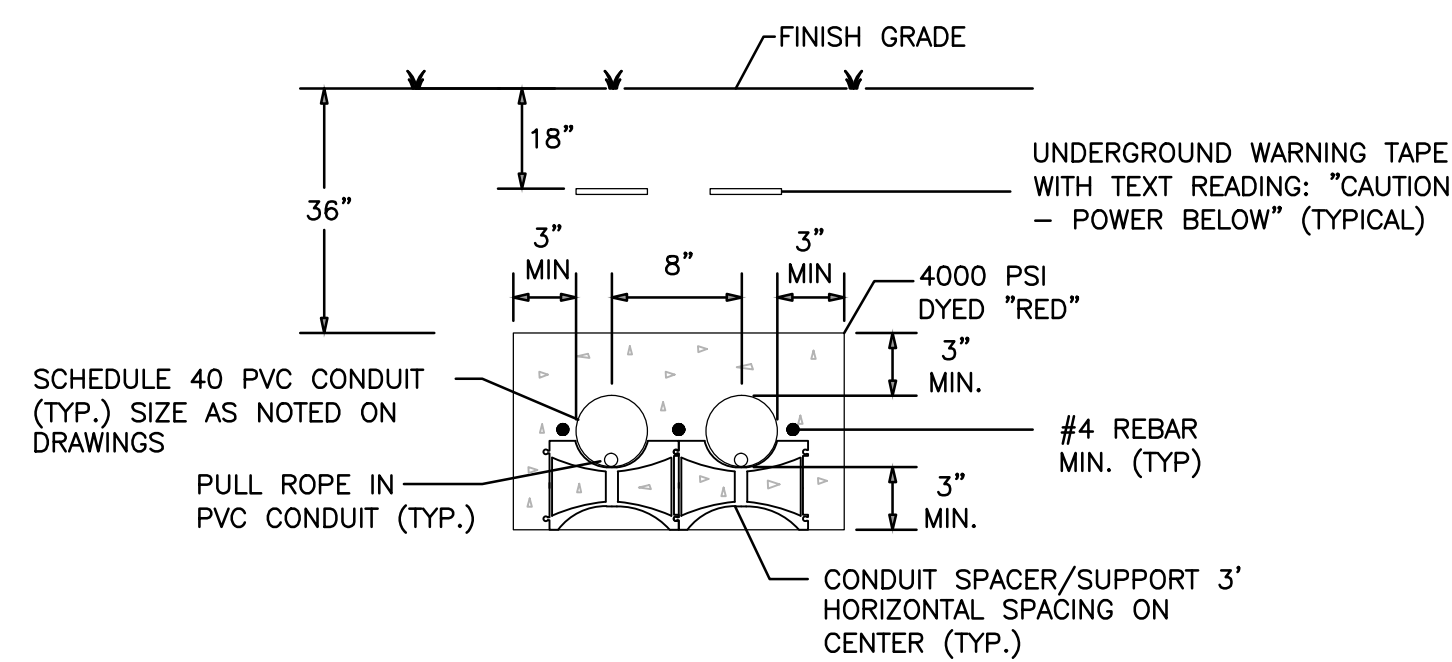
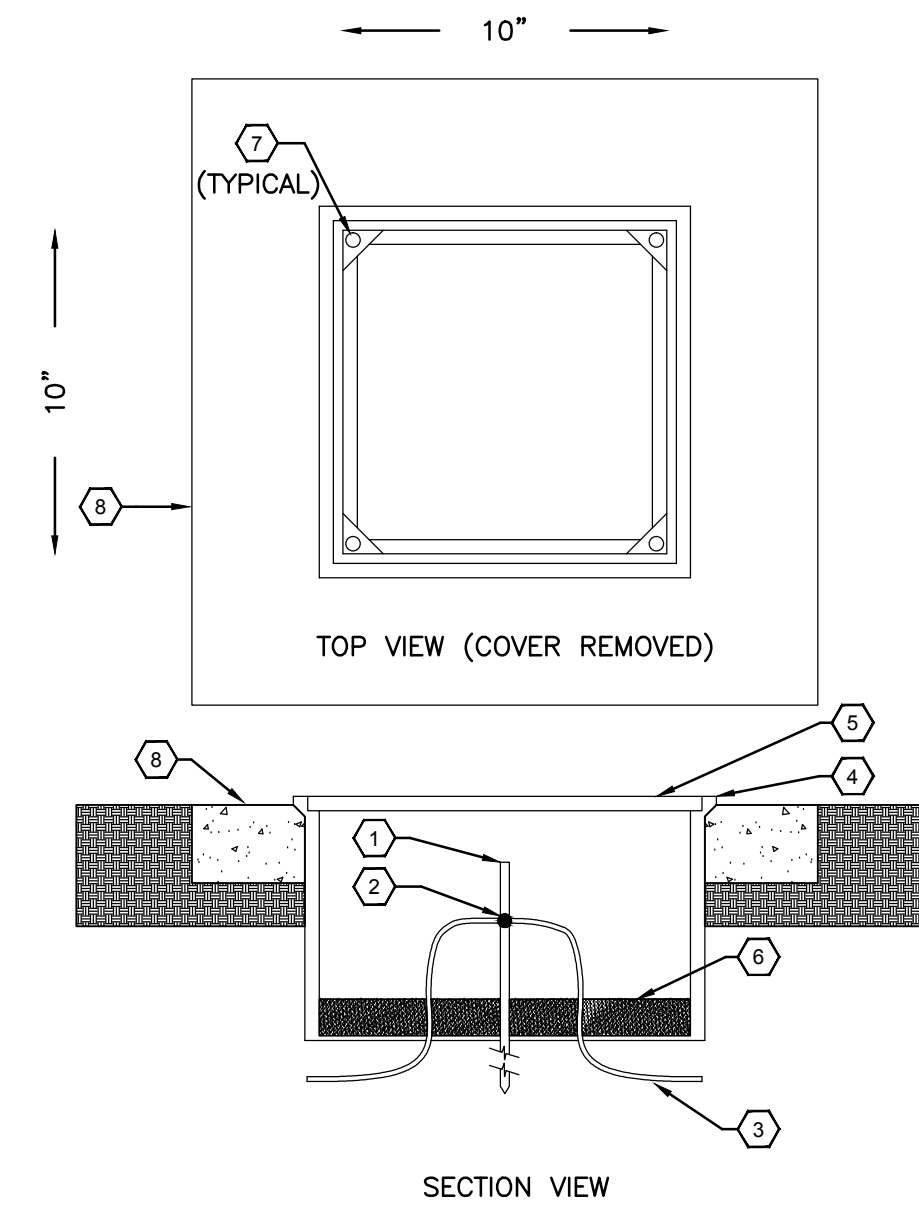


3 TYPICAL BUILDING AREA GROUNDING DETAIL
NTS



4 DUCTBANK DETAIL 'A'
NTS



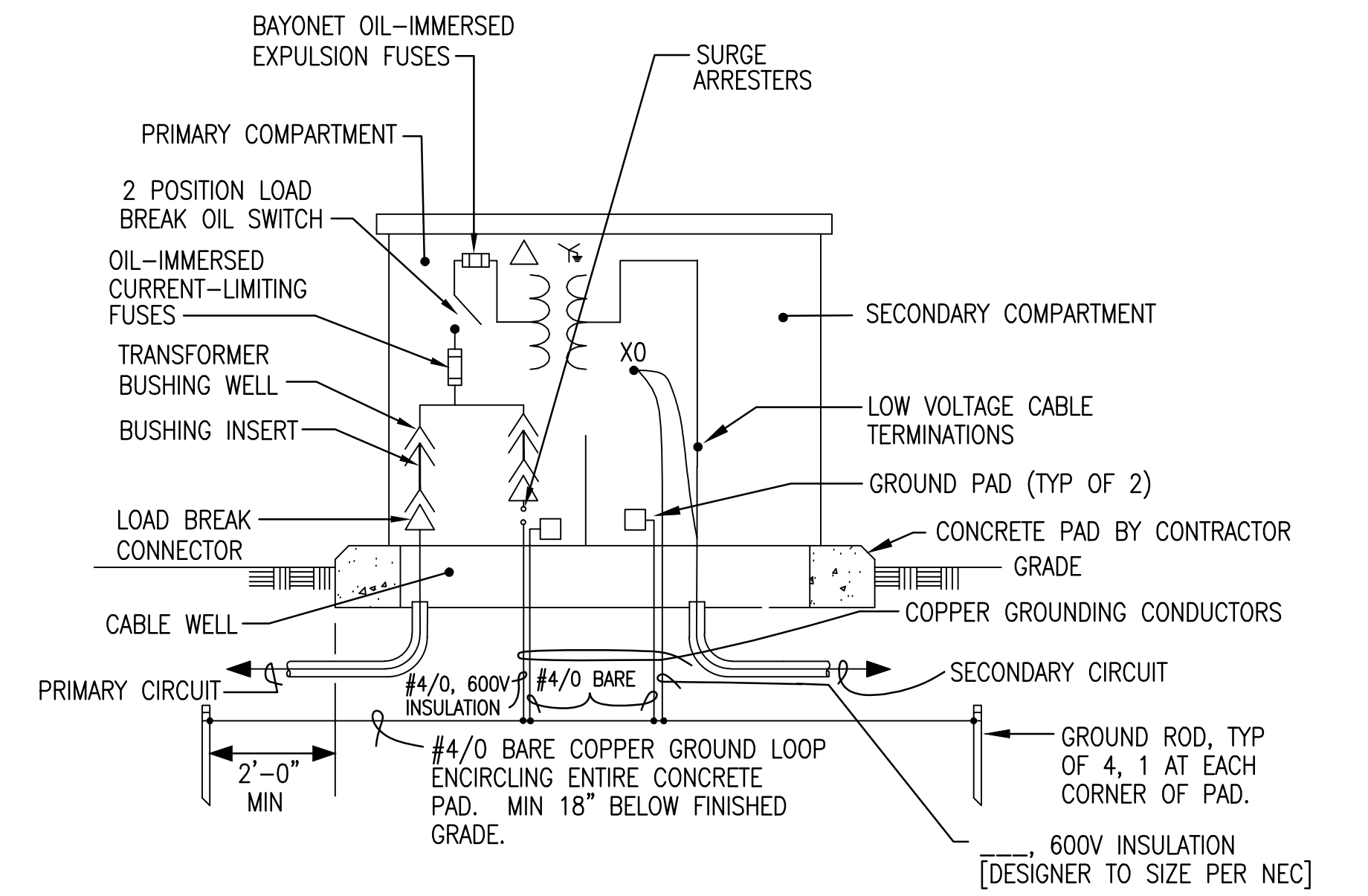
2 GROUND ROD TEST WELL DETAIL
NTS

KEYNOTES:

- GROUND ROD.
- EXOTHERMIC WELD.
- GROUNDING CONDUCTOR (BARE COPPER).
- POLYMER CONCRETE FIBERGLASS REINFORCED BOX.
- COVER FOR ABOVE BOX.
- GRAVEL OR CRUSHED STONE.
- TAMPERPROOF FASTENERS FOR LID.
- 3000 PSI CONCRETE IAW MANUFACTURER RECOMMENDATIONS.

GENERAL NOTE:

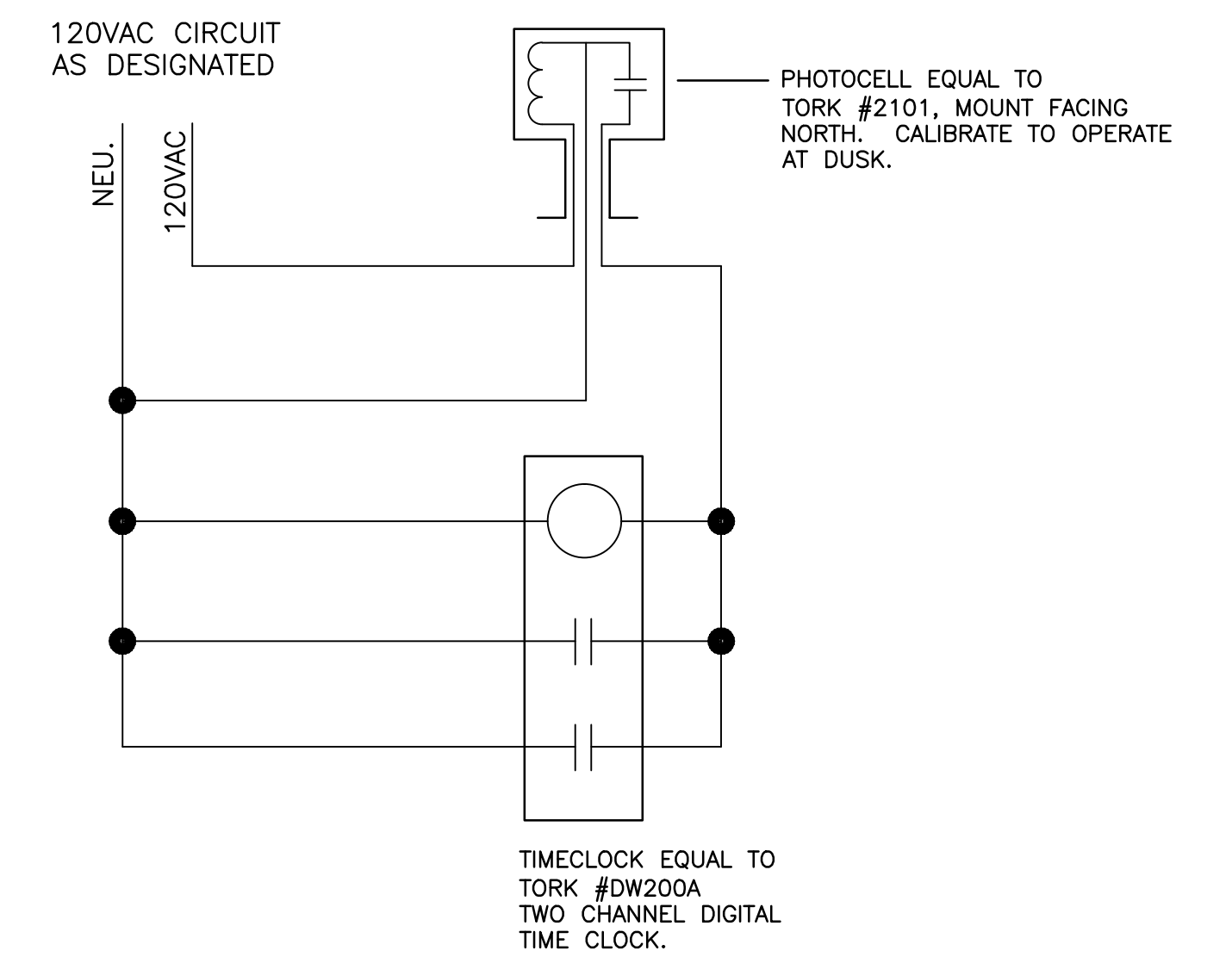
- ONE GROUND ROD TEST WELL REQUIRED AT EACH BUILDING WHERE THE MAIN GROUNDING ELECTRODE CONDUCTOR ENTERS THE SERVICE ENTRANCE EQUIPMENT.



1 PAD-MOUNTED TRANSFORMER DETAIL
NTS

GENERAL NOTE:

- TRANSFORMER DETAIL IS FOR REFERENCE ONLY. TRANSFORMER FURNISHED BY LOCAL UTILITY. CONTRACTOR TO FURNISH PAD PER LOCAL UTILITY REQUIREMENTS. SEE ELECTRICAL ONE-LINE DIAGRAM FOR CONDUIT AND CONDUCTOR REQUIREMENTS.



5 LIGHTING CONTROLS SCHEMATIC
NTS

FINAL SUBMISSION
APRIL 9, 2013

IF SHEET IS LESS THAN (30"x42") IT IS
A REDUCED PRINT; SCALE ACCORDINGLY

E502

 766 MIDDLE ST., FARMHOPE, AL 36532 251-990-5778 ARCH. & ENGR. SEAL 	NATURAL RESOURCES & ENVIRONMENTAL AFFAIRS SATISFACTORY TO DATE	P.W. DWG. NO.	DEPARTMENT OF THE NAVY NAVAL FACILITIES ENGINEERING COMMAND PANAMA CITY, FLORIDA	
	SAFETY DEPARTMENT SATISFACTORY TO DATE	DRAWN BY CWS	CONSTRUCT NAVAL BRANCH HEALTH CLINIC PANAMA CITY	
	FIRE DEPARTMENT SATISFACTORY TO DATE	CHECKED BY KDE	ELECTRICAL DETAILS	
	PUBLIC WORKS SUPERVISOR SATISFACTORY TO DATE	SUPERVISOR WWB	N/A	
APPROVED DATE		SCALE NONE	T.O.# _____ SHEET 9 OF 13	