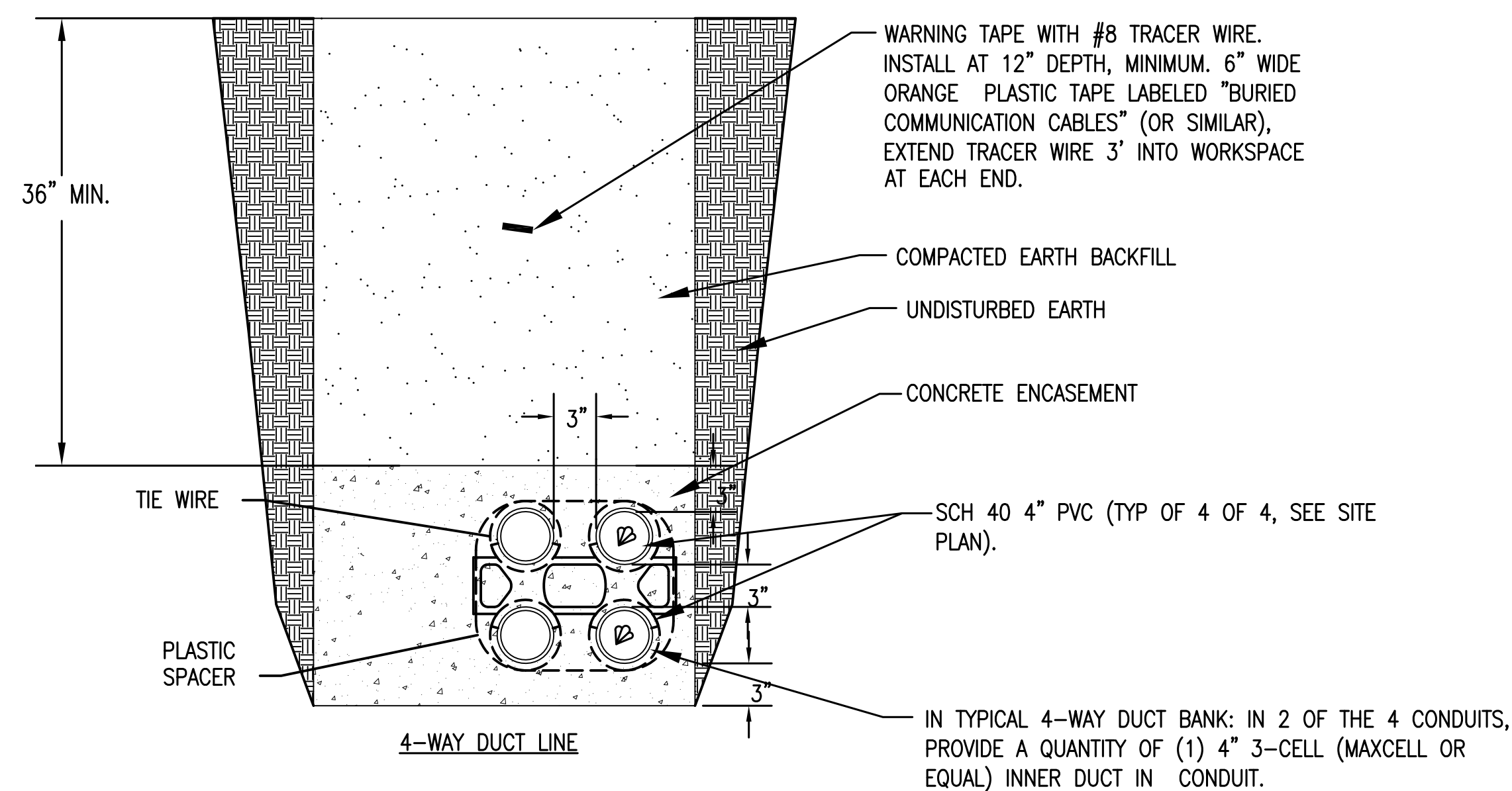


1 TYPICAL UNDERGROUND CONDUIT SLOPE PROFILE  
TN501  
NOT TO SCALE



DUCT BANK NOTES:

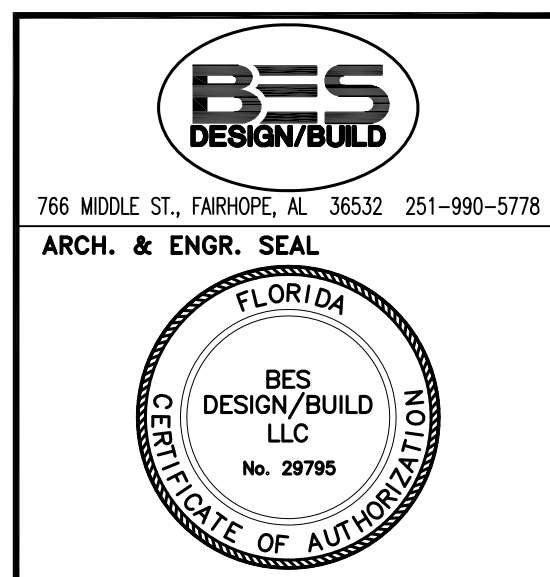
1. CONCRETE SHALL BE 2000 P.S.I. @ 28 DAYS, OR AS SPECIFIED.
2. PROVIDE REINFORCING RODS ON TOP AND BOTTOM OF DUCTS WHEN CROSSING OR PLACED IN ROADWAYS.
3. MINIMUM COVER TO TOP OF ENVELOPE SHALL BE 36"
4. PROVIDE MINIMUM 6" [152mm] SPACE BETWEEN POWER AND TELECOMMUNICATION DUCTS. INCREASE SIZE AS REQUIRED.
5. INNERDUCT QUANTITY AND SIZE AS INDICATED ON PLANS.

2 4-WAY CONDUIT DUCT BANK CROSS-SECTION  
TN501  
NOT TO SCALE

FINAL SUBMISSION  
APRIL 9, 2013

IF SHEET IS LESS THAN (30"x42") IT IS  
A REDUCED PRINT; SCALE ACCORDINGLY

TN501



NATURAL RESOURCES & ENVIRONMENTAL AFFAIRS		P.W. DWG. NO.		DEPARTMENT OF THE NAVY NAVAL SUPPORT ACTIVITY PANAMA CITY, FLORIDA	
SATISFACTORY TO DATE	SAFETY DEPARTMENT	DRAWN BY CEC	CONSTRUCT NAVAL BRANCH CLINIC, PANAMA CITY		
SATISFACTORY TO DATE	FIRE DEPARTMENT	CHECKED BY CEC	TELECOMMUNICATIONS DETAILS		
SATISFACTORY TO DATE	PUBLIC WORKS SUPERVISOR	SUPERVISOR TAN	SIZE F	CODE IDENT. NO. N/A	NAVFAC DRAWING NO. N/A
SATISFACTORY TO DATE		APPROVED DATE 02/15/2013	HOWC PROJ. NO. 520-13-200	CONSTR. CONTR. NO.	
		PUBLIC WORKS OFFICER	SCALE AS NOTED	MACC.	T.O.# SHEET 5 OF 12