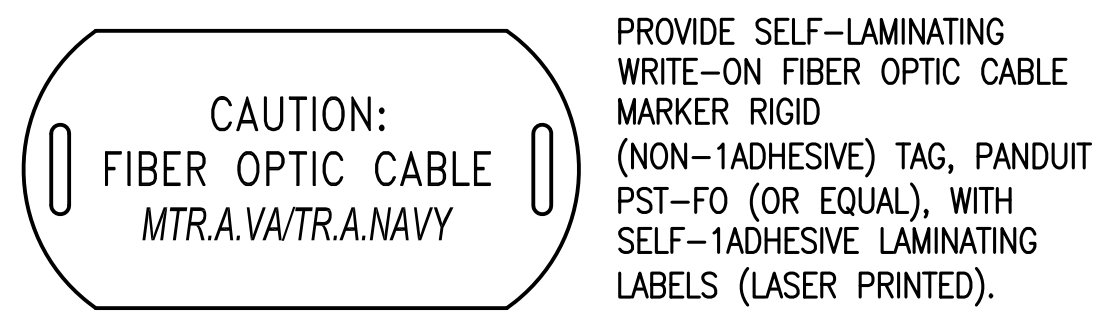
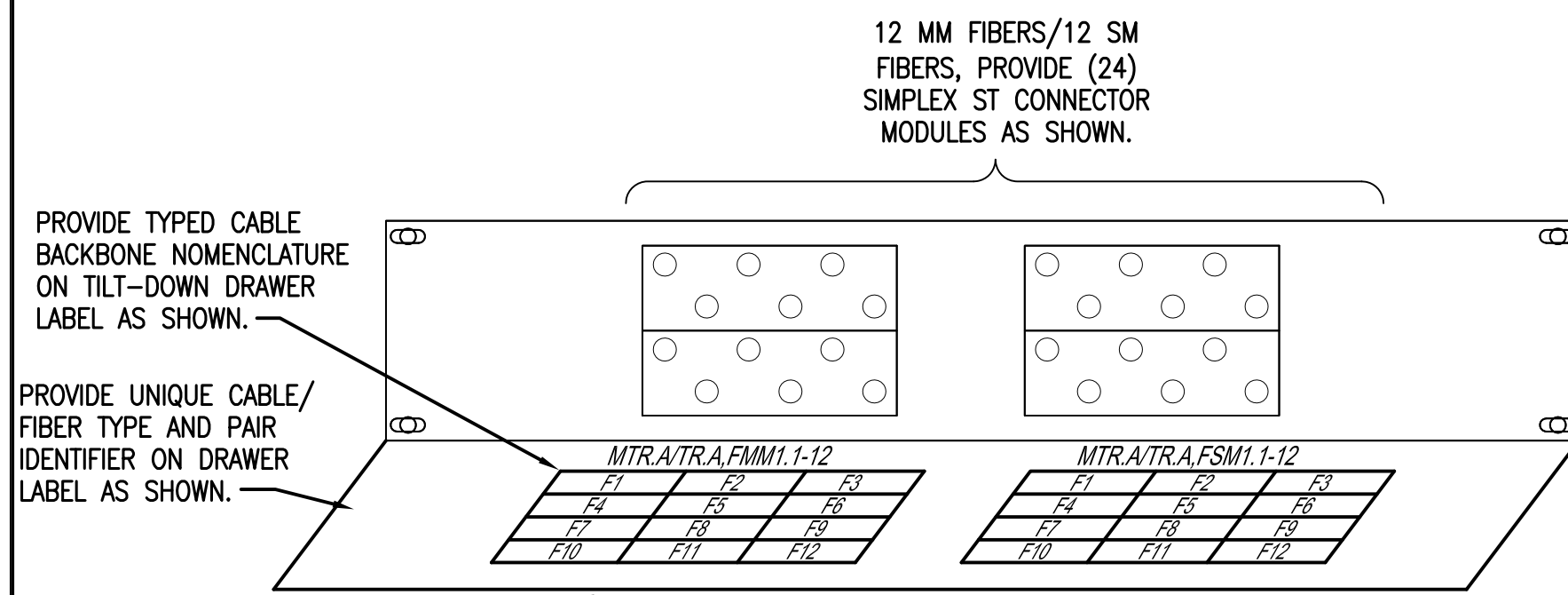


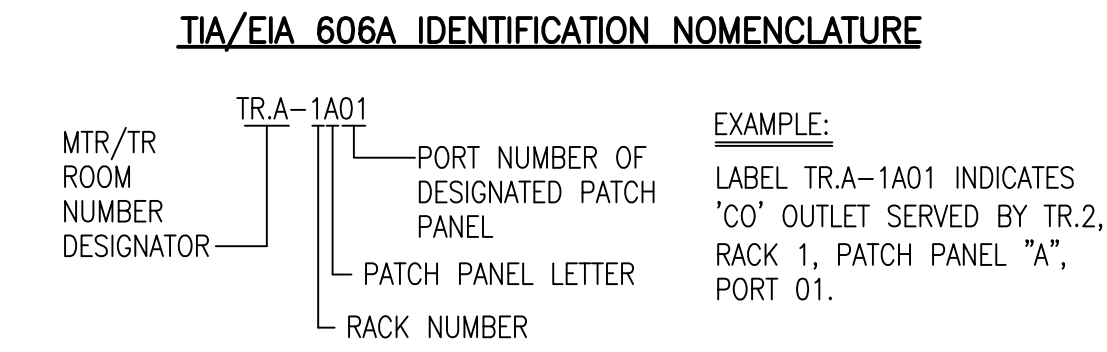
TYPICAL DATA PATCH PANEL ENGRAVED TAG DETAIL



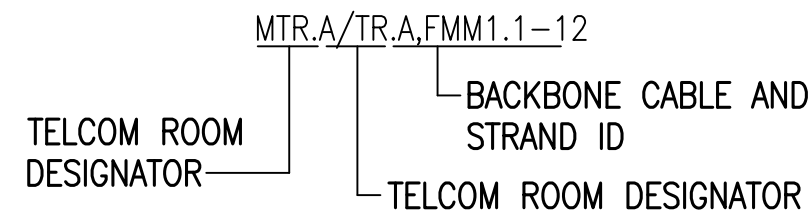
TYPICAL FIBER OPTIC BACKBONE CABLING TAG DETAIL



TYPICAL FIBER BACKBONE CABLE CODING FOR PATCH PANEL SERVING EACH TELECOMMUNICATIONS ROOM



FIBER OPTIC BACKBONE NOMENCLATURE



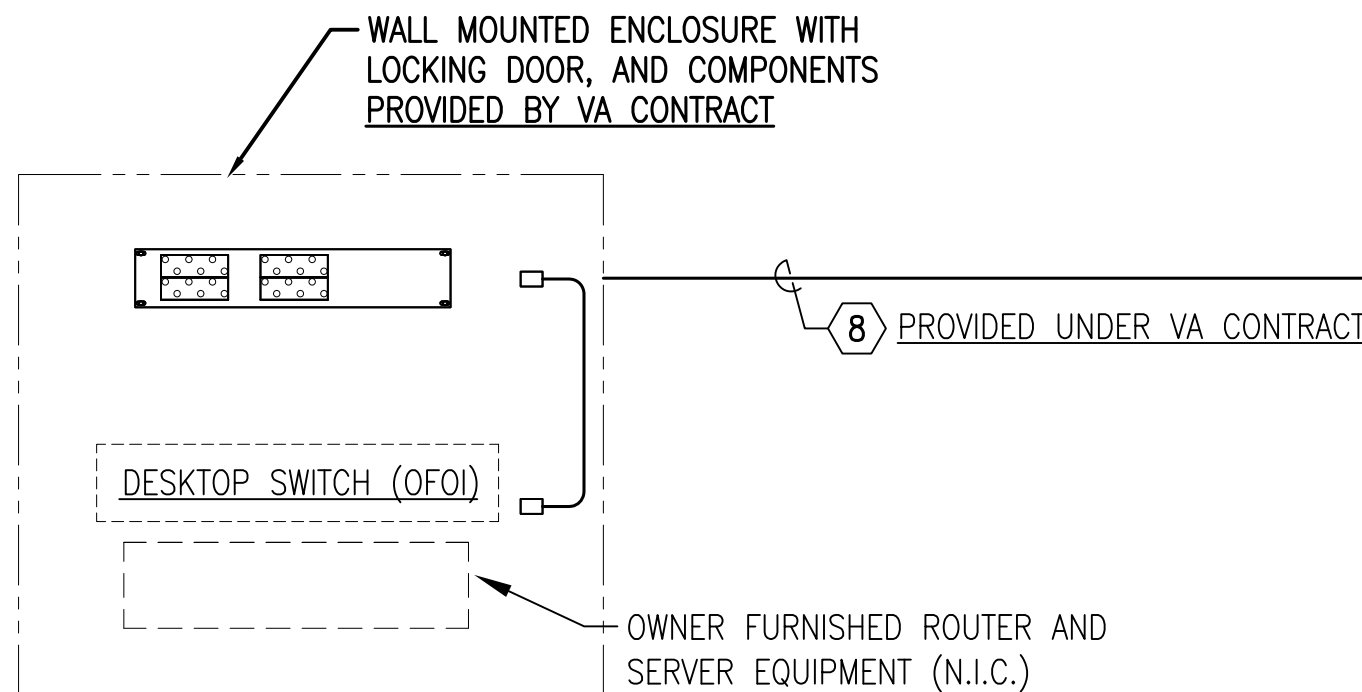
BACKBONE CABLE LABELING

LABEL ALL BACKBONE CABLES WITHIN 12" OF CABLE BREAKOUT POINT WITH PERMANENT MYLAR WRAP WRITE-ON MARKERS.

NAME FORMULA = BUILDING NUMBER - ROOM NUMBER/ BUILDING NUMBER - ROOM NUMBER, CABLE TYPE (FMM = FIBER MULTIMODE, FSM = FIBER SINGLE MODE, CAT6 = CATEGORY 6 COPPER), CABLE IDENTIFIER # (EACH PANEL WILL CONTAIN A SPREADSHEET DETAILING WHAT STRAND OF CABLE CONNECTS TO WHAT PORT NUMBER AND WHICH COLOR).

PORT NUMBERS WILL BE READ FROM TOP TO BOTTOM OR LEFT TO RIGHT, DEPENDING ON MODULE ORIENTATION.

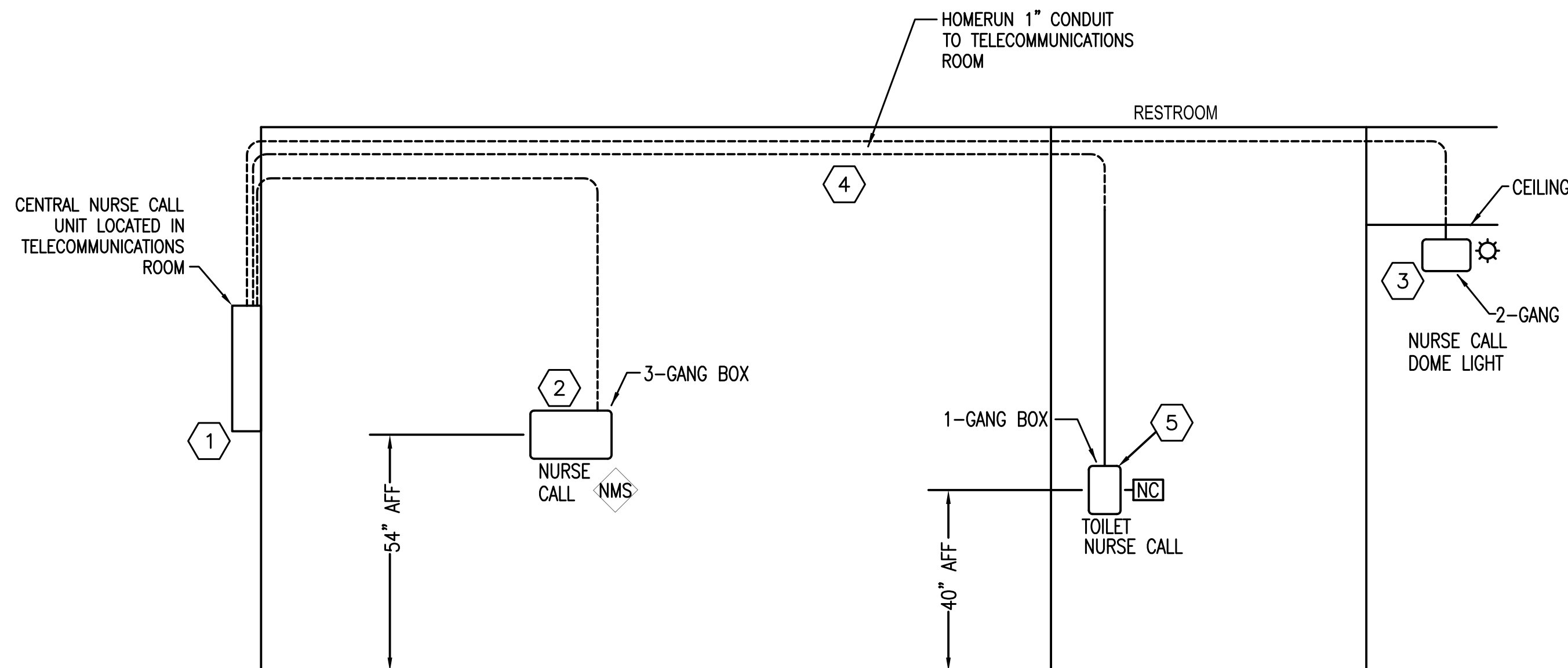
COLOR SEQUENCE: BLUE=1, ORANGE=2, GREEN=3, BROWN=4, SLATE=5, WHITE=6, RED=7, BLACK=8, YELLOW=9, VIOLET=10, ROSE=11, AQUA=12.



VA CLINIC MTR.1

DATA SYSTEM SINGLE LINE DIAGRAM

TN603
NOT TO SCALE



NURSE CALL SINGLE LINE & MOUNTING DETAIL

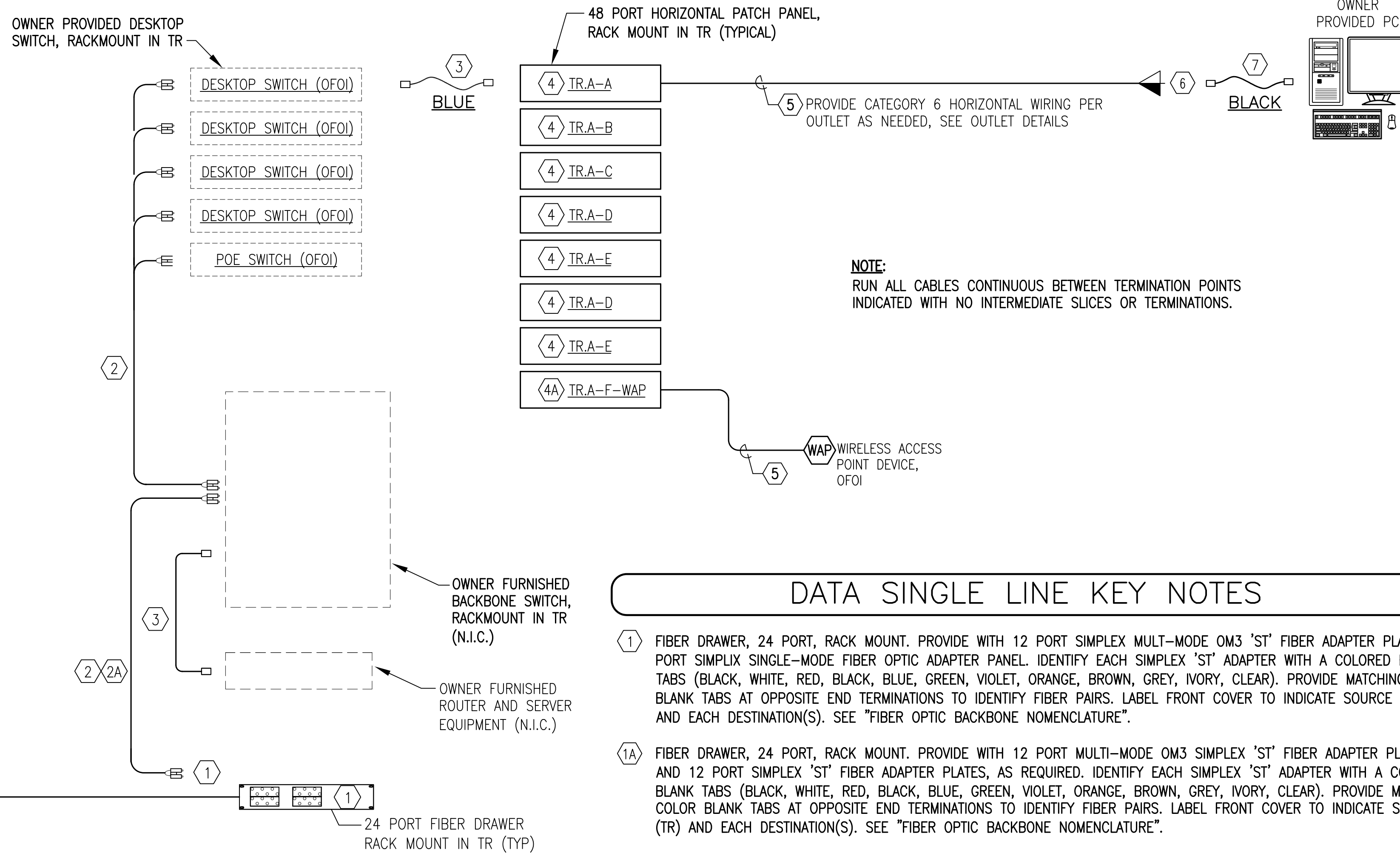
TN603
NOT TO SCALE

NURSE CALL SINGLE LINE KEY NOTES

- 1 CENTRAL CONTROL UNIT, LOCATED IN MAIN TELECOMMUNICATIONS ROOM (CER.A)
- 2 MASTER CALL SELECTOR STATION, WITH AUDIBLE & VISUAL INDICATOR OF EACH ROOM/SUITE.
- 3 PATIENT STATION WITH BLINKING LIGHT, TOILET CALL SWITCH.. PROVIDE PATIENT STATION IN EACH SUITE.
- 4 CABLING ACCORDING MANUFACTURERS INSTRUCTIONS.
- 5 TOILET STATION ONE-TOUCH/PULL OPERATION.

*BASIS OF DESIGN, JERON 680 TONE VISUAL

TELECOMMUNICATIONS ROOM TRA



DATA SINGLE LINE KEY NOTES

- 1 FIBER DRAWER, 24 PORT, RACK MOUNT. PROVIDE WITH 12 PORT SIMPLEX MULTI-MODE OM3 'ST' FIBER ADAPTER PLATES, 12 PORT SIMPLEX SINGLE-MODE FIBER OPTIC ADAPTER PANEL. IDENTIFY EACH SIMPLEX 'ST' ADAPTER WITH A COLORED BLANK TABS (BLACK, WHITE, RED, BLACK, BLUE, GREEN, VIOLET, ORANGE, BROWN, GREY, IVORY, CLEAR). PROVIDE MATCHING COLOR BLANK TABS AT OPPOSITE END TERMINATIONS TO IDENTIFY FIBER PAIRS. LABEL FRONT COVER TO INDICATE SOURCE (TR) AND EACH DESTINATION(S). SEE "FIBER OPTIC BACKBONE NOMENCLATURE".
- 1A FIBER DRAWER, 24 PORT, RACK MOUNT. PROVIDE WITH 12 PORT MULTI-MODE OM3 SIMPLEX 'ST' FIBER ADAPTER PLATES AND 12 PORT SIMPLEX 'ST' FIBER ADAPTER PLATES, AS REQUIRED. IDENTIFY EACH SIMPLEX 'ST' ADAPTER WITH A COLORED BLANK TABS (BLACK, WHITE, RED, BLACK, BLUE, GREEN, VIOLET, ORANGE, BROWN, GREY, IVORY, CLEAR). PROVIDE MATCHING COLOR BLANK TABS AT OPPOSITE END TERMINATIONS TO IDENTIFY FIBER PAIRS. LABEL FRONT COVER TO INDICATE SOURCE (TR) AND EACH DESTINATION(S). SEE "FIBER OPTIC BACKBONE NOMENCLATURE".
- 2 FIBER OPTIC PATCH CORD, DUAL FIBER, FDDI GRADE MULTIMODE, COORDINATE WITH GOVERNMENT FOR CONNECTORS EACH END, COLOR AQUA. PROVIDE QUANTITIES AND COORDINATE LENGTHS OF CABLES.
- 2A FIBER OPTIC PATCH CORD, DUAL FIBER, FDDI GRADE SINGLE MODE, COORDINATE WITH GOVERNMENT FOR CONNECTORS BOTH ENDS, COLOR YELLOW.
- 3 EQUIPMENT ROOM DATA PATCH CORDS, FACTORY TERMINATED AND TESTED CATEGORY 6 (MINIMUM) FOUR PAIR 100-OHM UNSHIELDED TWISTED PAIR (UTP) CABLE WITH 24 GAUGE STRANDED COPPER CONDUCTORS, COLOR BLACK. PROVIDE WITH 8-PIN MODULAR PLUG ON BOTH ENDS AND TIA 568A PIN/PAIR ASSIGNMENTS WITH NO BOOT. FIELD BUILT OR ASSEMBLED PATCH CORDS WILL NOT BE ACCEPTED. PROVIDE PATCH CORD QUANTITIES AND LENGTHS AS SCHEDULED THIS SHEET. PROVIDE DOCUMENTATION OF FACTORY TESTING CATEGORY 6 REQUIREMENTS AT SUBMITTAL.
- 4 TIA CATEGORY 6 HORIZONTAL WIRING PATCH PANEL, 48 PORT, TIA 568A PINOUT. PROVIDE WITH FACTORY ICON/LABEL HOLDERS, DESIGNATION LABELS, REAR CABLE MANAGERS, AND MOUNTING HARDWARE. PROVIDE COLORED SNAP-IN BLANK TAB FOR EACH MODULAR JACK, COLOR TO MATCH CORRESPONDING JACK IN CO. SEE "HORIZONTAL PATCH PANEL LABELING NOTES" FOR TERMINATION SEQUENCE, ROW LABELING, AND IDENTIFICATION TAG.
- 4A TIA CATEGORY 6 HORIZONTAL WIRING PATCH PANEL FOR WIRELESS ACCESS POINTS, 24 PORT, TIA 568A PINOUT. PROVIDE WITH FACTORY ICON/LABEL HOLDERS, DESIGNATION LABELS, REAR CABLE MANAGERS, AND MOUNTING HARDWARE. PROVIDE COLORED SNAP-IN BLANK TAB FOR EACH MODULAR JACK, COLOR TO MATCH CORRESPONDING JACK IN CO. SEE "HORIZONTAL PATCH PANEL LABELING NOTES" FOR TERMINATION SEQUENCE, ROW LABELING, AND IDENTIFICATION TAG.
- 5 TIA CATEGORY 6 HORIZONTAL WIRING, 4 PAIR UTP, 24 GAUGE SOLID COPPER CONDUCTORS, CMR, COLOR BLUE. MAXIMUM INSTALLED LENGTH 90 METERS (295').
- 6 TYPICAL COMMUNICATIONS OUTLET (CO) WITH CATEGORY 6 8-PIN MODULAR JACKS FOR DATA AND VOICE CONNECTIONS. SEE OUTLET DETAILS.
- 7 WORKSTATION PATCH CORDS, FACTORY TERMINATED AND TESTED CATEGORY 6 (MINIMUM) FOUR PAIR 100-OHM UNSHIELDED TWISTED PAIR (UTP) CABLE WITH 24 GAUGE STRANDED COPPER CONDUCTORS, COLOR BLACK. PROVIDE WITH 8-PIN MODULAR PLUG ON BOTH ENDS AND TIA 568A PIN/PAIR ASSIGNMENTS WITH NO BOOT. FIELD BUILT OR ASSEMBLED PATCH CORDS WILL NOT BE ACCEPTED. PROVIDE PATCH CORD QUANTITIES AND LENGTHS AS SCHEDULED THIS SHEET. PROVIDE DOCUMENTATION OF FACTORY TESTING CATEGORY 6 REQUIREMENTS AT SUBMITTAL.
- 8 FIBER OPTIC CABLE, INDOOR/OUTDOOR, 12 FIBER COUNT, 50µ 10GIG MULTIMODE AND 12 FIBER COUNT SINGLE MODE FIBER. PROVIDE SPIDER FAN-OUT KIT AT BOTH ENDS AND TERMINATE ALL FIBERS WITH 'ST' CONNECTORS. AT BOTH ENDS PROVIDE DROP LOOP IN CABLE BEHIND FIBER DRAWER TO ALLOW DRAWER PULL-OUT, AND PROTECT DROP LOOP WITH SPIRAL WRAP. EXTEND CABLE JACKET AND SPIRAL WRAP INTO DRAWER AND SECURE. COIL 24" SLACK BUFFERED FIBER IN DRAWER USING FACTORY HARDWARE. RUN CONTINUOUS FROM SOURCE TO DESTINATION WITH NO SPLICES OR TERMINATIONS. PROVIDED UNDER VA PROJECT.

FINAL SUBMISSION
APRIL 9, 2013



 766 MIDDLE ST., FANNHOPE, AL 36532 251-990-5778 ARCH. & ENGR. SEAL 	NATURAL RESOURCES & ENVIRONMENTAL AFFAIRS SATISFACTORY TO DATE	P.W. DWG. NO.	DEPARTMENT OF THE NAVY NAVAL SUPPORT ACTIVITY PANAMA CITY, FLORIDA
	SAFETY DEPARTMENT	DRAWN BY CEC	CONSTRUCT NAVAL BRANCH CLINIC, PANAMA CITY
	FIRE DEPARTMENT	CHECKED BY CEC	TELECOMMUNICATIONS DATA SYSTEM SINGLE LINE
	PUBLIC WORKS SUPERVISOR	SUPERVISOR TAN	SIZE F
	APPROVED 02/15/2013	DATE	NAVFAC DRAWING NO. N/A
	PUBLIC WORKS OFFICER	CONSTR. CONTR. NO.	SCALE AS NOTED MACC. T.O.# SHEET 10 OF 12