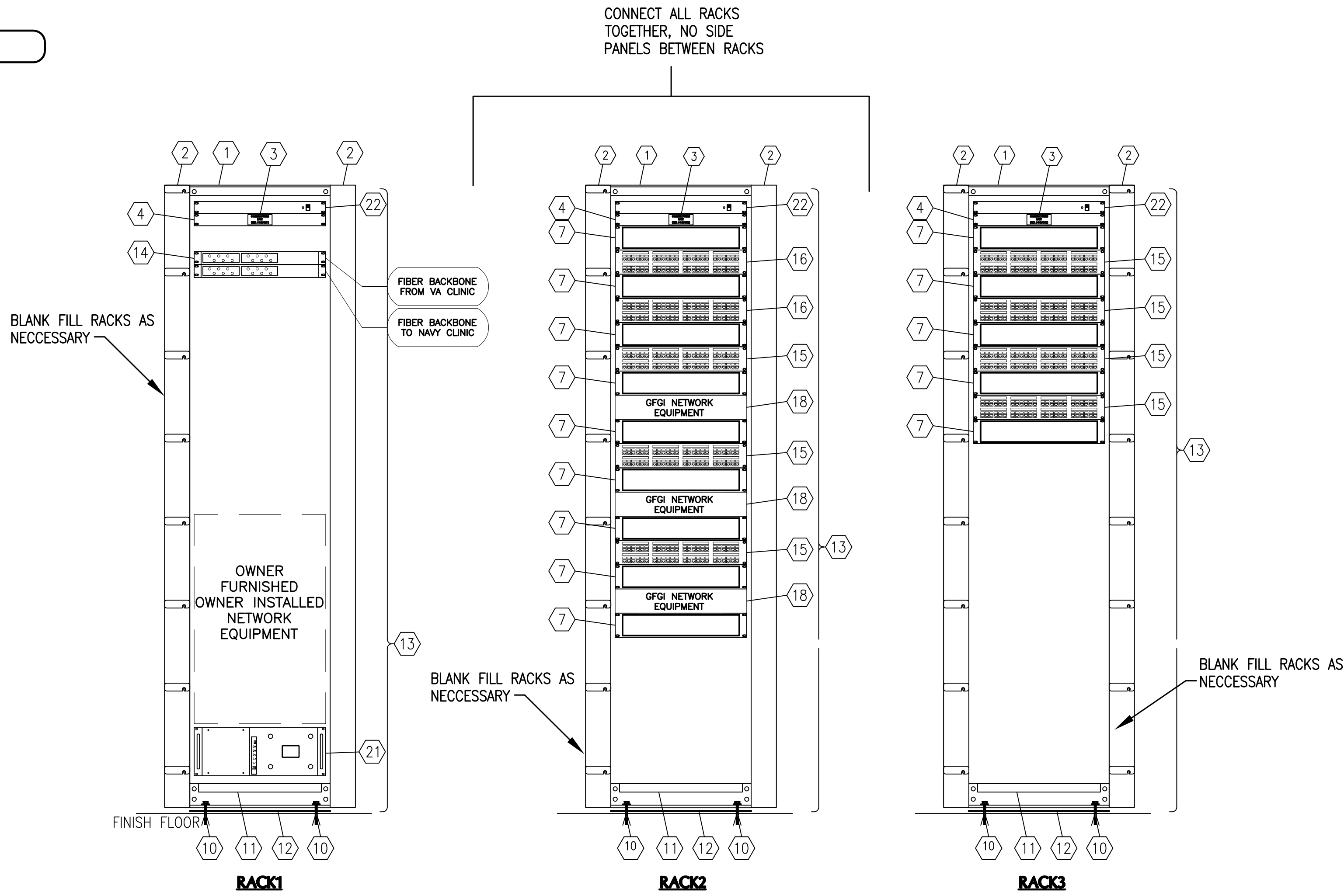


COMMUNICATIONS RACK ELEVATION KEY NOTES:

- STANDARD 7'-0" HIGH X 30" WIDE X 31.5" DEEP EQUIPMENT CABINET WITH UNIVERSAL 5/8", 5/8", 1/2" ALTERNATING HOLE PATTERN FRONT AND BACK, AND BLACK BAKED ENAMEL FINISH WITH REMOVABLE SIDE PANELS, . PROVIDE VERTICAL RACK CABLING MANAGMENT WITHIN CABINET. PROVIDE SPLIT FRONT LOCKABLE DOORS, PROVIDE LOCKABLE SPLIT REAR DOOR, VENTED). PROVIDE WITH 10" VENTILATION FAN.
- DOUBLE SIDED VERTICAL RACK CABLING SECTION, SIZE 4" x 83", COLOR BLACK. PROVIDE WITH HINGED COVER ON TO CONCEAL CABLES.
- IDENTIFICATION TAG AT TOP OF RACK, SEE "TYPICAL COMMUNICATIONS RACK ENGRAVED TAG DETAIL".
- ONE RACK SPACE BLANK FILLER PLATE, COLOR BLACK.
- TWO RACK SPACE BLANK FILLER PLATE, COLOR BLACK.
- FOUR RACK SPACE BLANK FILLER PLATE, COLOR BLACK.
- TWO RACK SPACE HORIZONTAL CABLE MANAGER ON FRONT SIDE OF RACK. PROVIDE WITH HINGED SOLID COVER TO CONCEAL CABLES.
- CONCRETE FLOOR RACK MOUNTING KIT.
- RACK BASE DUST COVER, BLACK ENAMEL FINISH.
- RACK ISOLATION KIT.
- NYLON CABLE STANDOFF BRACKET, MOUNT ON BACK LEFT SIDE OF ALL RACKS AT 12" ON CENTER FOR ROUTING GROUNDING CONDUCTORS AND POWER EXTENSION CORDS UP AND DOWN RACKS. TYWRAP EACH CONDUCTOR AND CORD INDIVIDUALLY ON STANDOFF. (NOT SHOWN ON ELEVATIONS)
- DATA FIBER BACKBONE DRAWER, RACK MOUNT. FOR FIBER CONNECTION, SEE SHEET TN-603.
- 48 PORT CATEGORY 6 HORIZONTAL WIRING PATCH PANEL, SEE "VOICE/DATA SINGLE LINE DIAGRAM", PROVIDE WITH CABLE ROUTING RAILS ON REAR FOR ROUTING AND SECURING CABLES.
- 48 PORT VOICE PATCH PANEL, SEE "VOICE SINGLE LINE DIAGRAM". PROVIDE TWO CABLE SUPPORT BARS ON BACK OF RACK, STRAP 25 PAIR VOICE CABLES TO CABLE BARS.
- GOVERNMENT FURNISHED, GOVERNMENT INSTALLED LAN EQUIPMENT. SEE "DATA SYSTEM SINGLE LINE DIAGRAM". NOTE: WHERE EQUIPMENT VARIES IN SIZE OR QUANTITY FROM THAT INDICATED, PROVIDE BLANK FILLER PLATES TO COVER ALL UNUSED RACK SPACES.
- GOVERNMENT FURNISHED GOVERNMENT INSTALLED RACKMOUNT UPS. PROVIDE EXTENSION CORD AS REQUIRED TO PLUG INTO WALL.
- RACKMOUNT POWER SURGE SUPPRESSOR, COLOR BLACK, PROVIDE WITH 6 AC RECEPTACLES ON BACK OF UNIT AND 12' POWER CORD.



NOTE

COORDINATE EXACT CABLE COUNTS WITH FLOOR PLANS FOR EXACT QUANTITY OF PATCH PANELS REQUIRED.

MAIN TELECOMMUNICATIONS RACK ELEVATIONS (TR.A)

1

TN-401

12" 0' 1' 2'  
SCALE: 1"=1'-0"

2 TYPICAL VERTICAL RUNWAY DETAIL

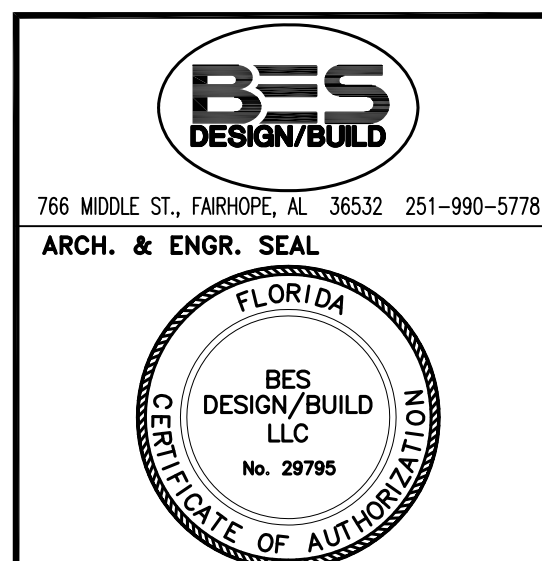
TN701

NOT TO SCALE

FINAL SUBMISSION  
APRIL 9, 2013

IF SHEET IS LESS THAN (30"x42") IT IS  
A REDUCED PRINT; SCALE ACCORDINGLY

TN701



|   |                             |
|---|-----------------------------|
| NATURAL RESOURCES & ENVIRONMENTAL AFFAIRS | P.W. DWG. NO.               |
| SATISFACTORY TO DATE                      |                             |
| SAFETY DEPARTMENT                         | DRAWN BY<br>CEC             |
|   | CHECKED BY<br>CEC           |
| FIRE DEPARTMENT                           | SUPERVISOR<br>TAN           |
|   | APPROVED DATE<br>02/15/2013 |
| PUBLIC WORKS SUPERVISOR                   |                             |
| SATISFACTORY TO DATE                      | PUBLIC WORKS OFFICER        |

|  |                        |  |                |
|--|------------------------|--|----------------|
| DEPARTMENT OF THE NAVY                     |                        | NAVAL FACILITIES ENGINEERING COMMAND       |                |
| NAVAL SUPPORT ACTIVITY                     |                        | NAVAL SUPPORT ACTIVITY                     |                |
| PANAMA CITY, FLORIDA                       |                        | PANAMA CITY, FLORIDA                       |                |
| CONSTRUCT NAVAL BRANCH CLINIC, PANAMA CITY |                        | CONSTRUCT NAVAL BRANCH CLINIC, PANAMA CITY |                |
| TELECOMMUNICATIONS ELEVATIONS              |                        | TELECOMMUNICATIONS ELEVATIONS              |                |
| SIZE<br>F                                  | CODE IDENT. NO.<br>N/A | NAVFAC DRAWING NO.<br>N/A                  |                |
| HOWC PROJ. NO.<br>520-13-200               | CONSTR. CONTR. NO.     |  |                |
| SCALE AS NOTED                             | MACC.                  | T.O.#                                      | SHEET 12 OF 12 |