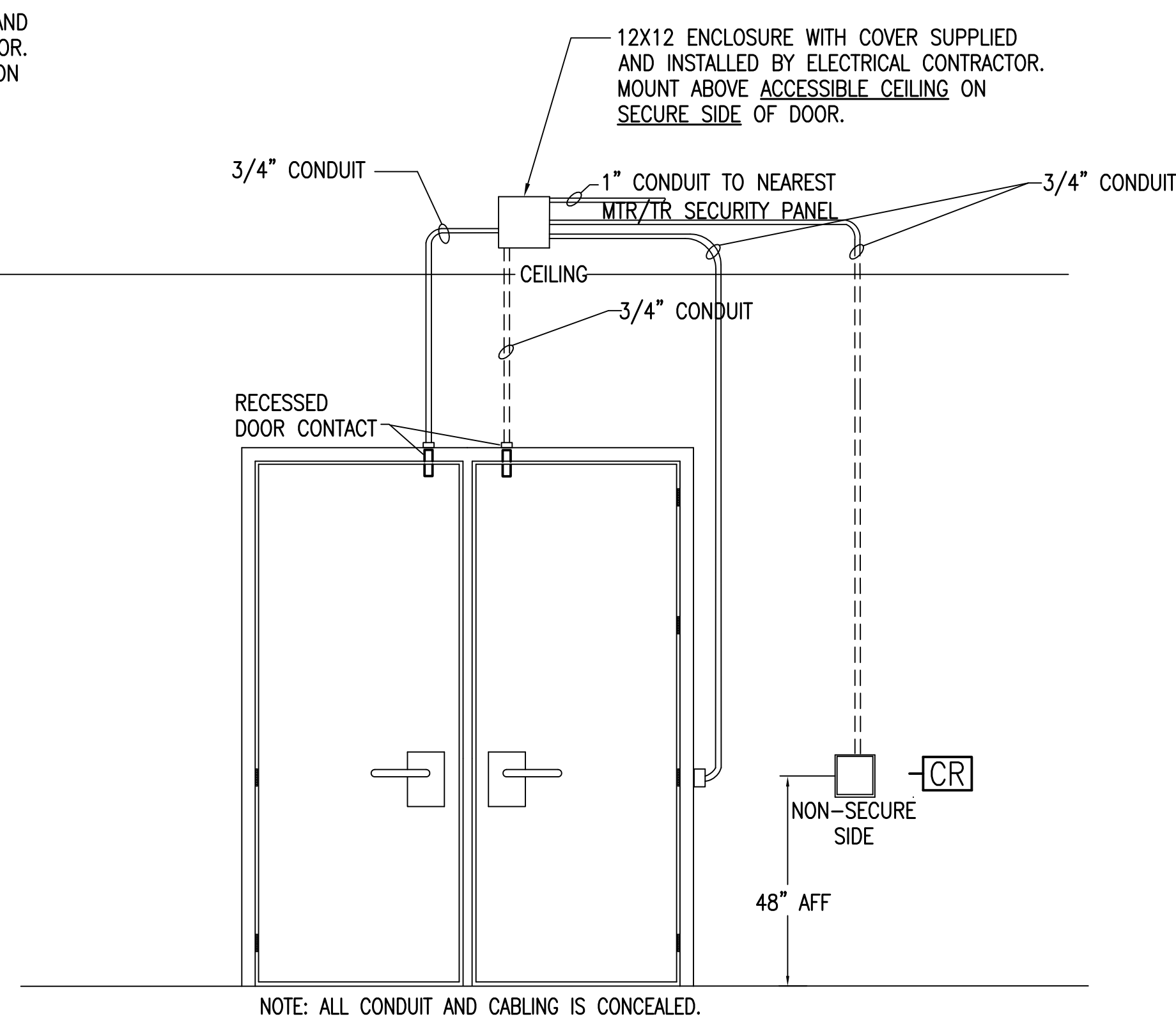
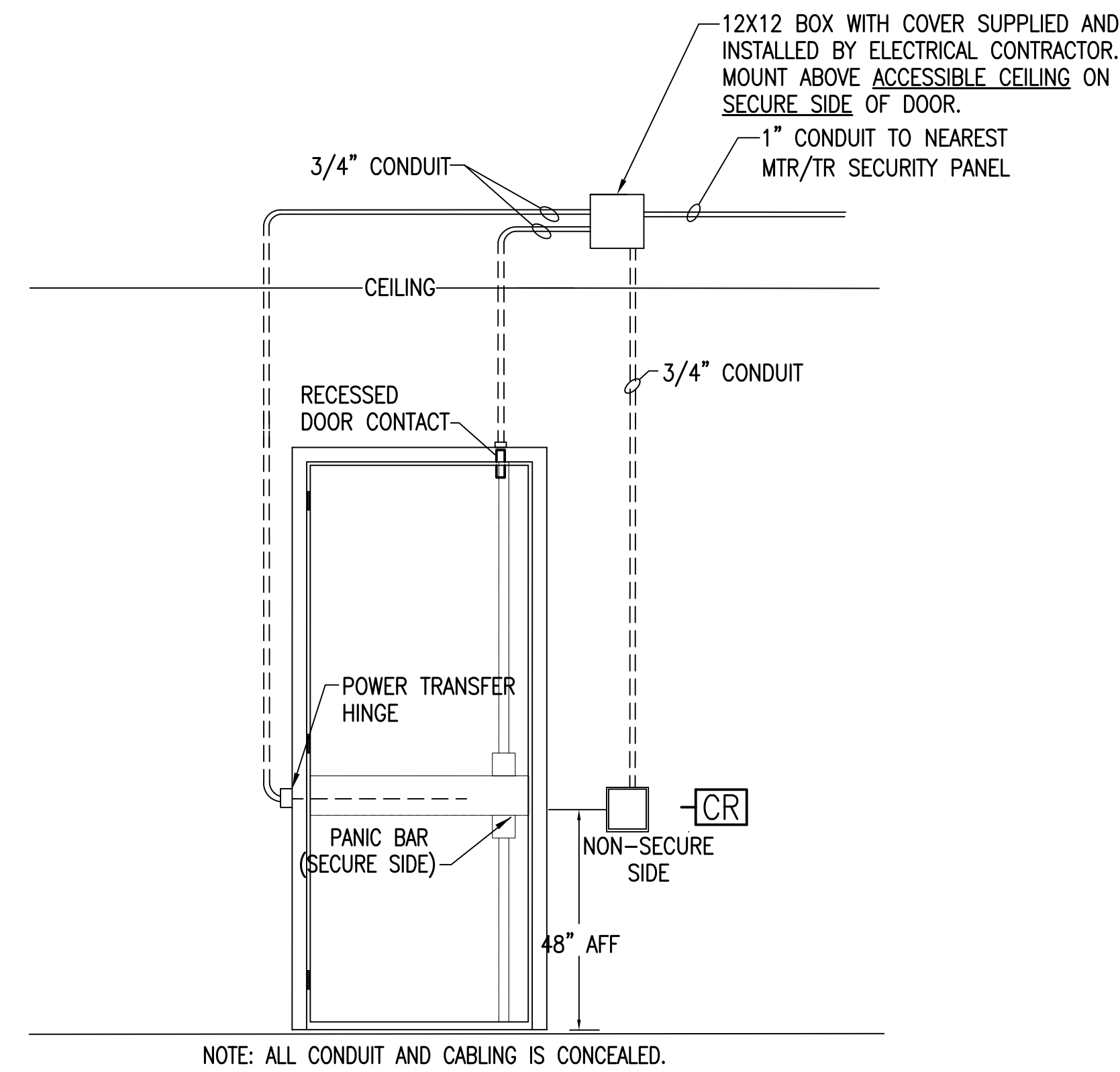


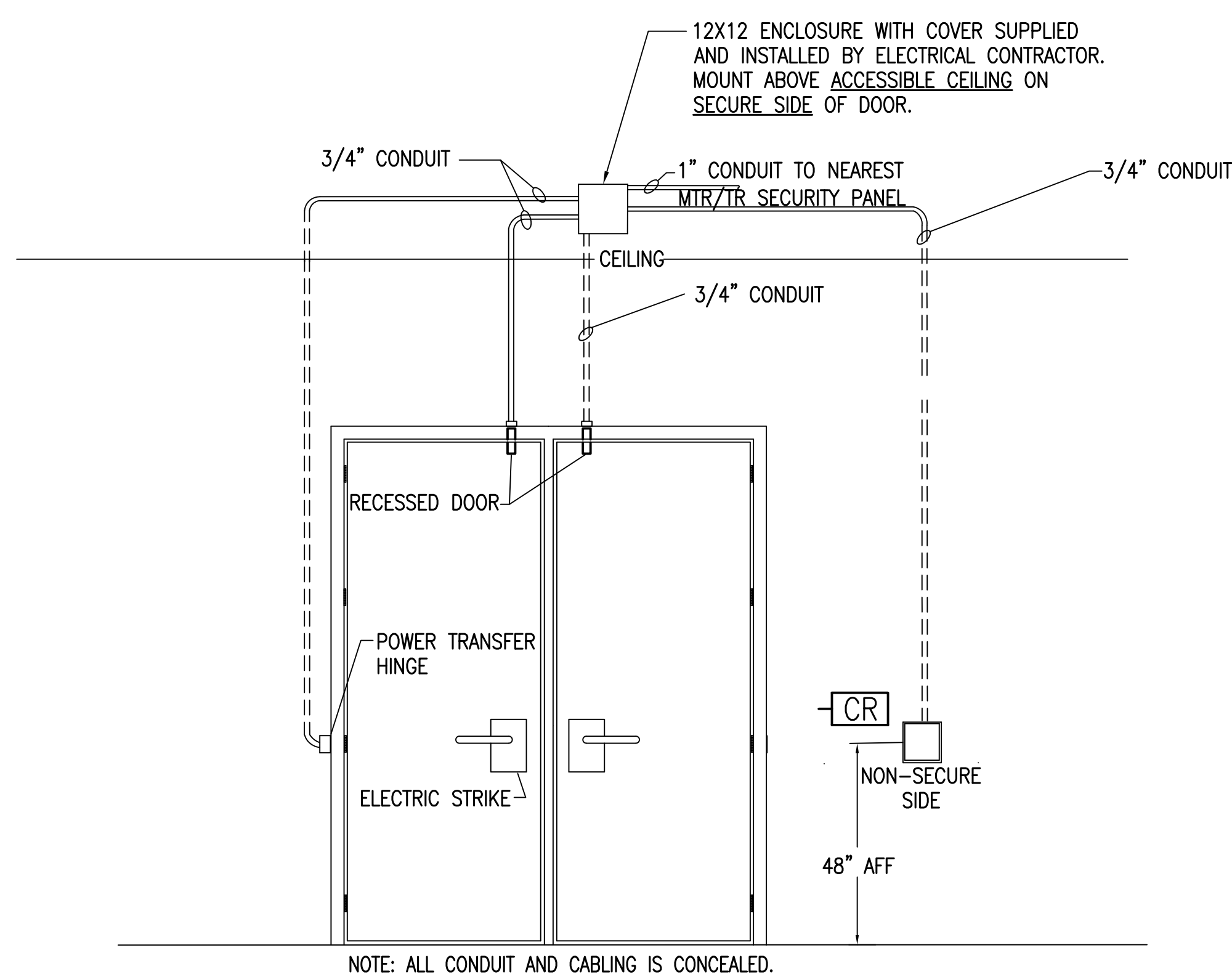
1 SINGLE DOOR ELECTRIC MORTISE AND CARD READER
TY502
NOT TO SCALE



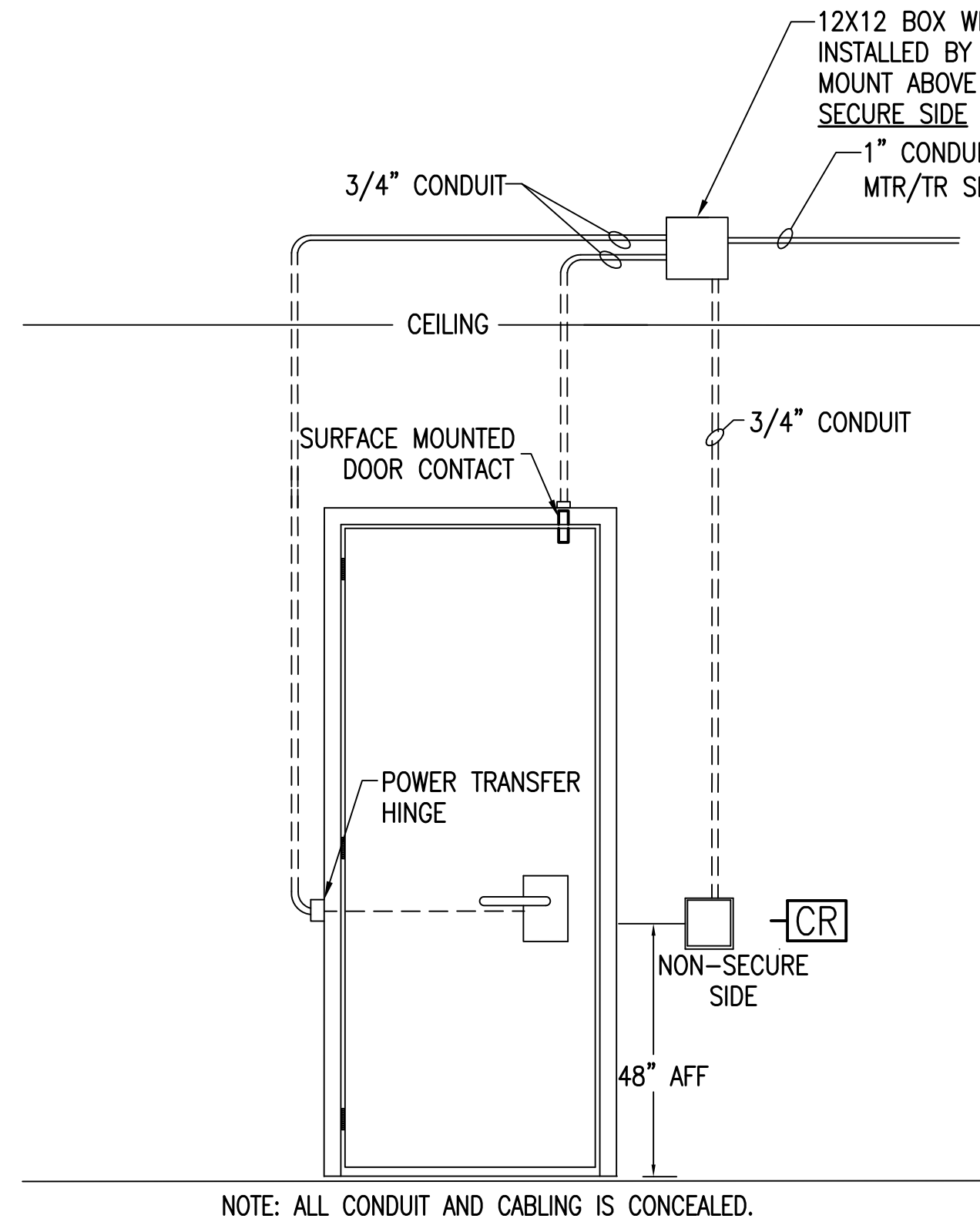
2 DOUBLE DOOR WITH CARD READER AND ELECTRIC LOCK
TY502
NOT TO SCALE



3 SINGLE DOOR WITH PANIC DEVICE AND CARD READER/KEYPAD
TY502
NOT TO SCALE



4 DOUBLE DOOR WITH CARD READER/KEYPAD, ELECTRIC STRIKE
TY502
NOT TO SCALE



5 SINGLE DOOR ELECTRIC MORTISE AND CARD READER
TY502
NOT TO SCALE

NOTE:
DOORS DEPICTED ARE FOR TYPICAL DOOR ROUGH-IN, REFER TO ARCHITECTURAL DOOR SCHEDULE FOR EXACT REQUIREMENTS.

FINAL SUBMISSION
APRIL 9, 2013

IF SHEET IS LESS THAN (30"x42") IT IS
A REDUCED PRINT; SCALE ACCORDINGLY

TY502



 366 MOBILE ST., FARMHOPE, AL 36532 251-990-5778 ARCH. & ENGR. SEAL 	NATURAL RESOURCES & ENVIRONMENTAL AFFAIRS		P.W. DWG. NO.		DEPARTMENT OF THE NAVY NAVAL FACILITIES ENGINEERING COMMAND PANAMA CITY, FLORIDA	
	SAFETY DEPARTMENT		DRAWN BY CEC		NAVAL SUPPORT ACTIVITY PANAMA CITY, FLORIDA	
	FIRE DEPARTMENT		CHECKED BY CEC		CONSTRUCT NAVAL BRANCH HEALTH CLINIC PANAMA CITY	
	PUBLIC WORKS SUPERVISOR		SUPERVISOR TAN		SECURITY DETAILS	
APPROVED		DATE 02/15/2013		SIZE F		CODE IDENT. NO. N/A
Satisfactory to Date		Satisfactory to Date		HONC PROJ. NO. 520-13-200		CONSTR. CONTR. NO.
Satisfactory to Date		Satisfactory to Date		SCALE AS NOTED		MACC. T.O.# SHEET 4 OF 5