

GENERAL PLUMBING NOTES

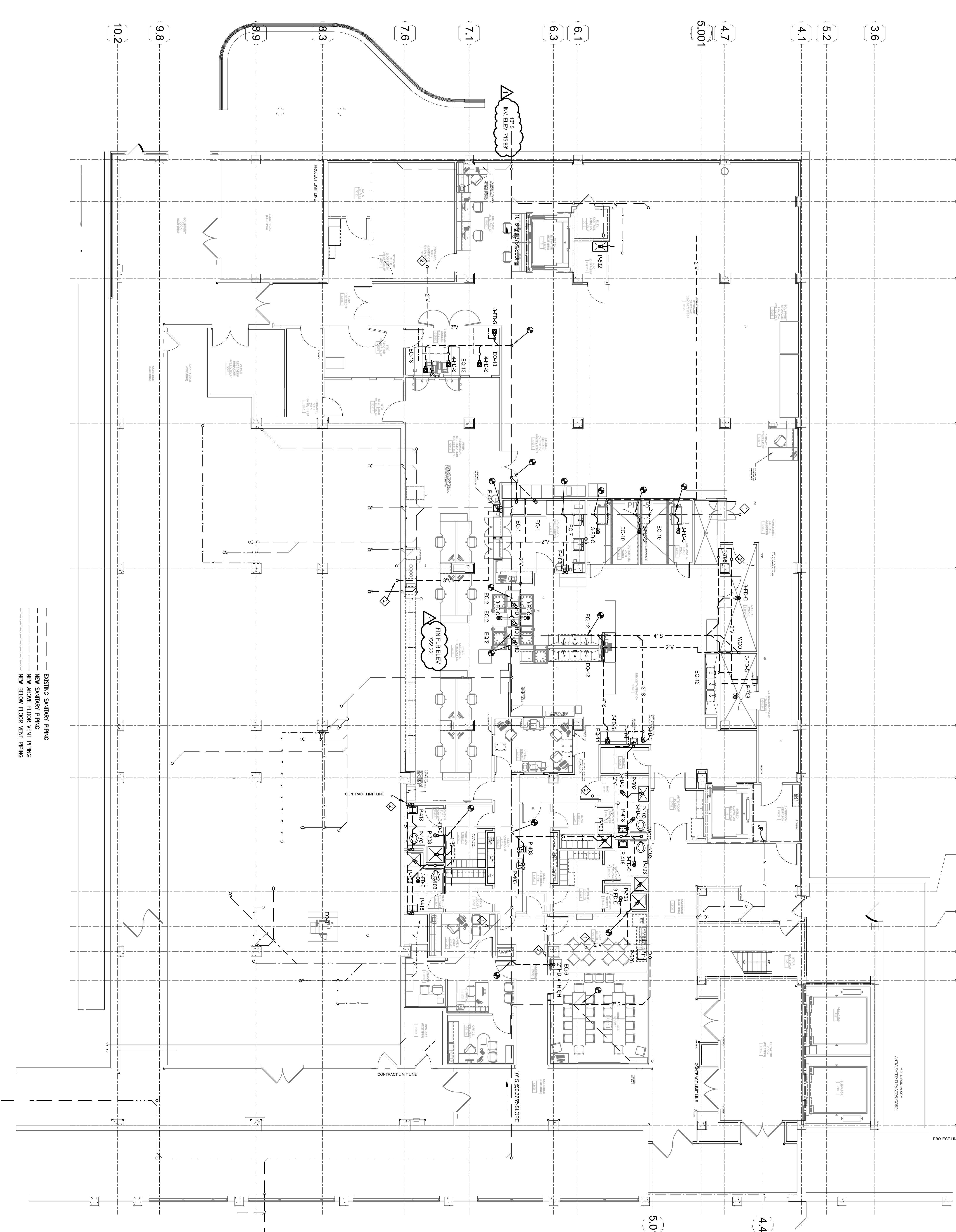
- 1) THESE PLUMBING DRAWINGS HAVE BEEN PREPARED UTILIZING EXISTING DRAWINGS AND BUILDING SURVEYS AND MAY NOT SHOW ALL CONDITIONS. EXISTING CONDITIONS SHALL BE SHOWN PRIOR TO SUBMISSION. OVERSIGHTS, OMISSIONS, AND ERRORS SHALL BE THE RESPONSIBILITY OF THE CONTRACTOR. THE CONTRACTOR SHALL BE RESPONSIBLE FOR OBTAINING ALL NECESSARY PERMITS, FUNDS AND TIME DUE TO CONTRACTORS FAILURE TO BECOME FAMILIAR WITH ALL EXISTING CONDITIONS.
- 2) PROVIDE ALL NECESSARY PLUMBING CONNECTIONS TO PLUMBING FIXTURES AND EQUIPMENT. COORDINATE PLUMBING REQUIREMENTS WITH PLUMBING EQUIPMENT CONTRACTOR.

KEYED NOTES

- 1) REROUTE EXISTING SURGERY SUITE DWV RISER BELOW THE FLOOR TO NEAREST NEW PARTITION IN THE SPD SPACE. RECONNECT INTO SURGERY SUITE DWV RISER ABOVE CEILING.
- 2) ROUTE VENT PIPING THRU SURGERY SUITE SLAB INTO FIRST FLOOR EXISTING CHASE ABOVE. EXTEND VENT INTO SURGERY SUITE CEILING SPACE AND TIE INTO EXISTING VENT PIPING. AT TIE IN POINT AND BEYOND, REPLACE AND UPSIZE VENT PIPING ONE FULL PIPE SIZE TO A MAXIMUM OF 4" AND EXTEND THROUGH ROOF. FLASH AND SEAL ROOF PENETRATION TO PRESERVE EXISTING ROOF WARRANTY. COORDINATE WORK WITH COITR AND HOSPITAL OR STAFF. OPERATIONS SHALL BE PERFORMED AFTER 4:30 PM OR AS PERMITTED BY COITR.
- 3) REPLACE EXISTING SUMP PUMP AND ASSOCIATED 1-1/2" DISCHARGE LINE WITH A NEW SUMP PUMP (SP-1) AND NEW 2-1/2" DISCHARGE LINE.
- 4) CONNECT NEW 2-1/2" DISCHARGE LINE TO EXISTING 3" DISCHARGE LINE LOCATED OVER HEAD, FIELD VERIFY EXACT LOCATION.
- 5) ROUTE VENT PIPING UP THRU SURGERY SUITE SLAB INTO FIRST FLOOR CHASE BEHIND SCRUB SINK IN ALCOVE SCRUB, G17R ABOVE. EXTEND VENT INTO SURGERY SUITE CEILING SPACE AND TIE INTO EXISTING 3-1/2" RPPN. OPERATIONS SHALL BE PERFORMED AFTER 4:30 PM OR AS PERMITTED BY COITR.
- 6) ROUTE VENT PIPING UNDER BASEMENT FLOOR UP THRU SURGERY SUITE SLAB INTO FIRST FLOOR CHASE BEHIND TOILET IN TOILET ROOM, G119. EXTEND VENT INTO SURGERY SUITE CEILING SPACE AND TIE INTO EXISTING 4" VTR PIPING. OPERATIONS SHALL BE PERFORMED AFTER 4:30 PM OR AS PERMITTED BY COITR.

LEGEND

- PLUMBING FIXTURES
- P-103 TOILET
 - P-403 LAVATORY
 - P-404 LAVATORY
 - P-418 LAVATORY
 - P-428 MOP BASIN
 - P-203 KITCHEN SINK
 - P-207 SHOWER FITTING
 - P-208 EMERGENCY SHOWER
 - P-404 HOSE BIBB
 - P-911 MIXING VALVE
 - P-913 WATER GUN (DECK-MNTD FAUCET)
- PROCESS EQUIPMENT
- EO-1 ENDSCOPE REPROCESSOR
 - EO-2 ENDSCOPE DISINFECTOR
 - EO-3 ELECTRIC STEAM GENERATOR
 - EO-4B AIR GUN
 - EO-5 HEAT SEALER
 - EO-6 ICE MAKER
 - EO-7 PREPROCESSING SINK
 - EO-8 GAS STERILIZER
 - EO-9 CART WASHER, MAIN CABIN
 - EO-10 CART WASHER, SUPPLY TANK
 - EO-11 ULTRASONIC CLEANER
 - EO-12 DECONTAMINATION WORK SINK
 - EO-13 STEAM STERILIZER



BASEMENT PLAN - SANITARY PIPING



CONSULTANTS:

- STRUCTURAL ENGINEER (SPD):
STRUCTURAL ENGINEERS, LTD.
1600 OCEAN DRIVE, SUITE 200
SAN JOSE, CA 95128
C.O.#: 200015199
- MECHANICAL/ELECTRICAL:
MECHANICAL ENGINEERS - ST. LOUIS
1600 OCEAN DRIVE, SUITE 200
ST. LOUIS, MO 63103
C.O.#: W0007024
- ACQUISITION ENGINEER:
ACQUISITION ENGINEERS, LTD.
1600 OCEAN DRIVE, SUITE 200
ST. LOUIS, MO 63103
C.O.#: W0007024
- ESTIMATING:
KAYME BUILDING GROUP
1600 OCEAN DRIVE, SUITE 200
ST. LOUIS, MO 63103
C.O.#: W0007024

ARCHITECT/ENGINEERS:

- THE SEAL (S) AND SIGNATURE(S) OF THE ARCHITECT/ENGINEER SHALL BE PLACED ON THE DRAWING TO BE USED FOR ANY PART OF THE PROJECT. THE SEAL (S) AND SIGNATURE(S) OF THE ARCHITECT/ENGINEER SHALL BE PLACED ON THE DRAWING TO BE USED FOR ANY PART OF THE PROJECT.
- ARCHITECTS | INTERIORS | PLANNERS | LANDSCAPE ARCHITECTS
1600 OCEAN DRIVE, SUITE 200 | ST. LOUIS, MISSOURI 63103
TEL: 314.725.8927 | FAX: 314.725.8928 | CHRISTENING.COM
© COPYRIGHT 2012 CHRISTENING

Drawing Title		Project Title	
BASEMENT PLAN SANITARY PIPING		STERILE PROCESSING AND DISTRIBUTION	
Approved: Medical Center Director	Approved: Chief of O.R.	Approved: Chief of SPD	Approved: Director of Facilities Management
Approved: Nurse Practitioner	Approved: Infection Control	Approved: Nurse Practitioner	Approved: Infection Control
Date: 1/13/12	Checked: CKF	Drawn: JGM	Approved:
Drawing Number: 585-321		Drawing Number: PL100	
Building Number: 1		Building Number: 1	
Office of Construction and Facilities Management		Office of Construction and Facilities Management	

