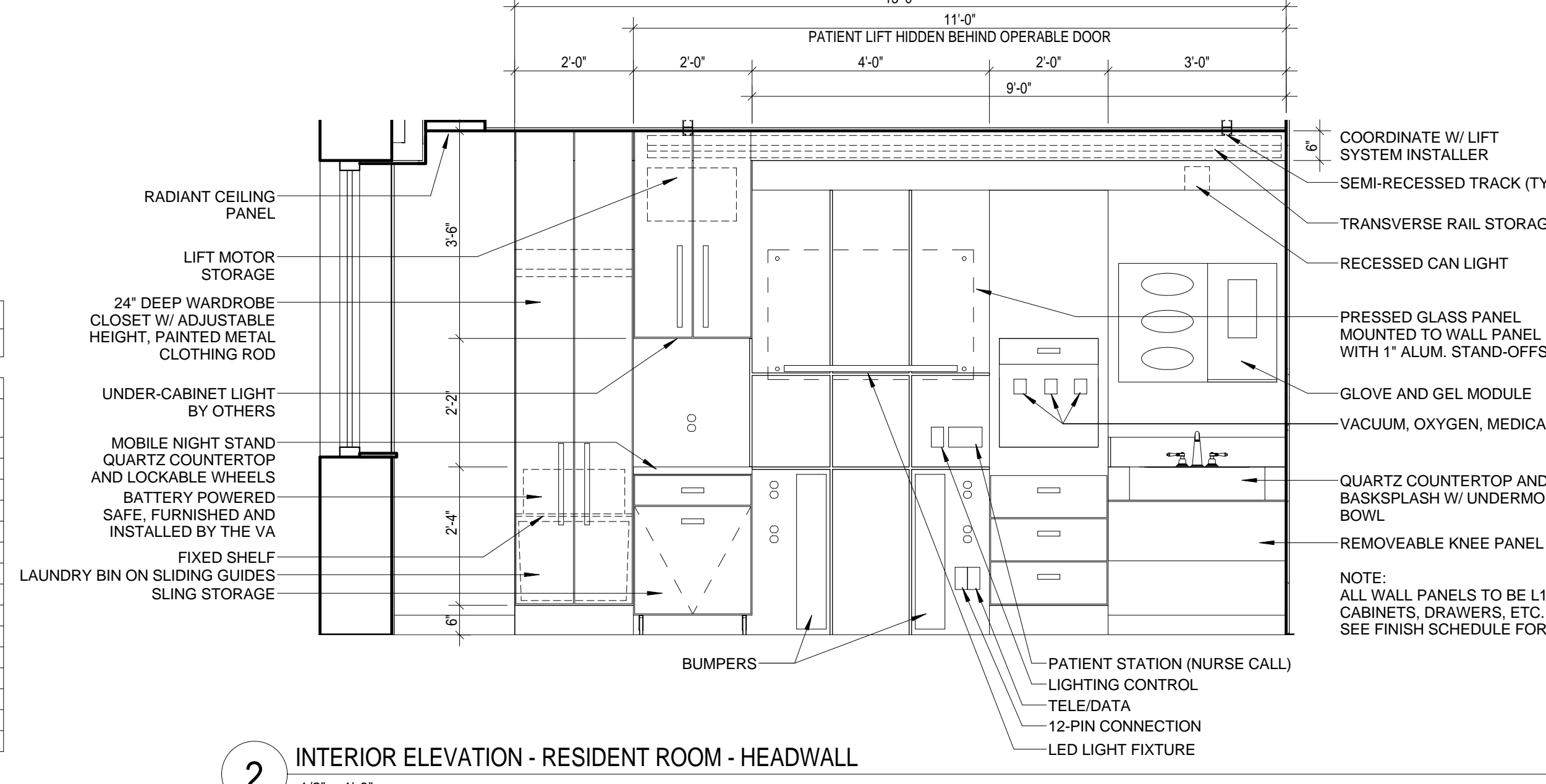


1 ENLARGED PLAN - RESIDENT ROOM & BATHROOM - TYPICAL
1/4" = 1'-0"

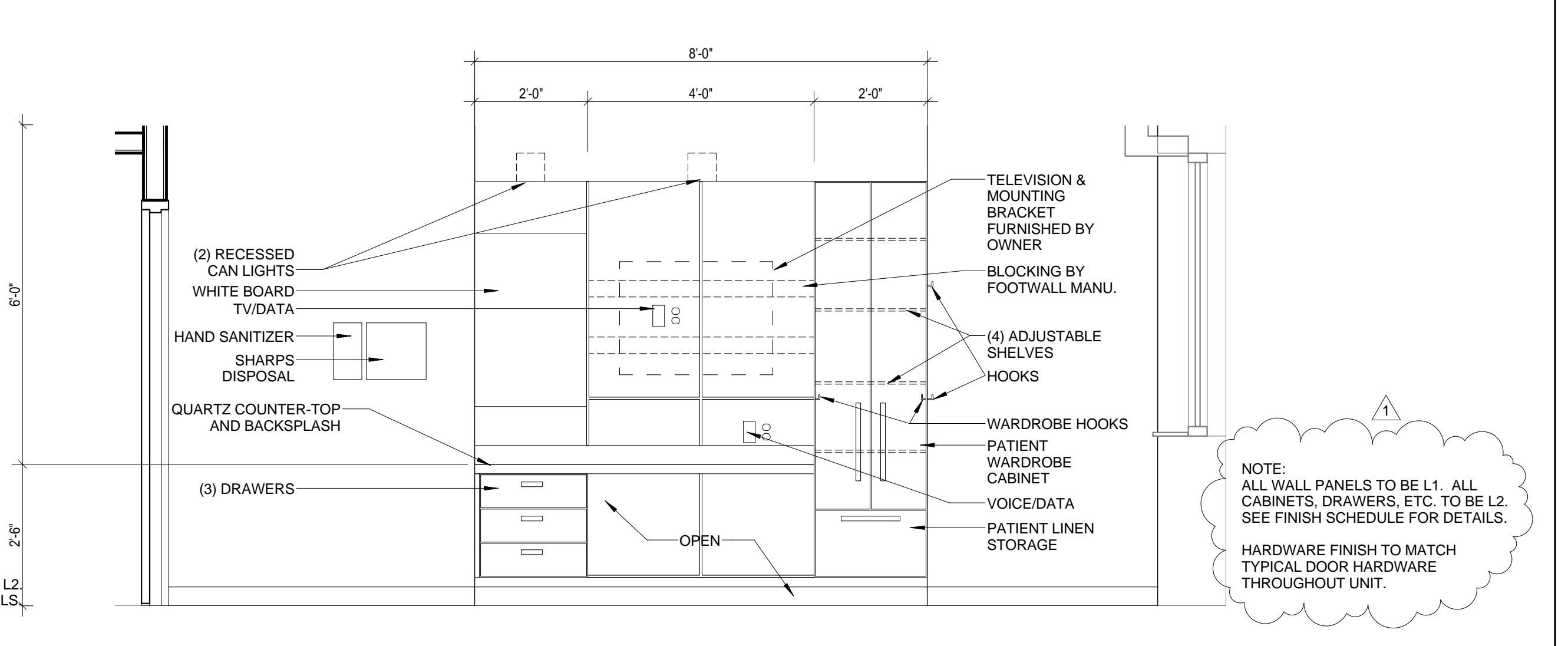
ALL TOILET ROOM ACCESSORIES TO BE FURNISHED AND INSTALLED BY THE CONTRACTOR UNLESS NOTED OTHERWISE.

ABBREVIATION LEGEND
 O = OWNER
 F = FURNISHED
 C = CONTRACTOR
 I = INSTALLED

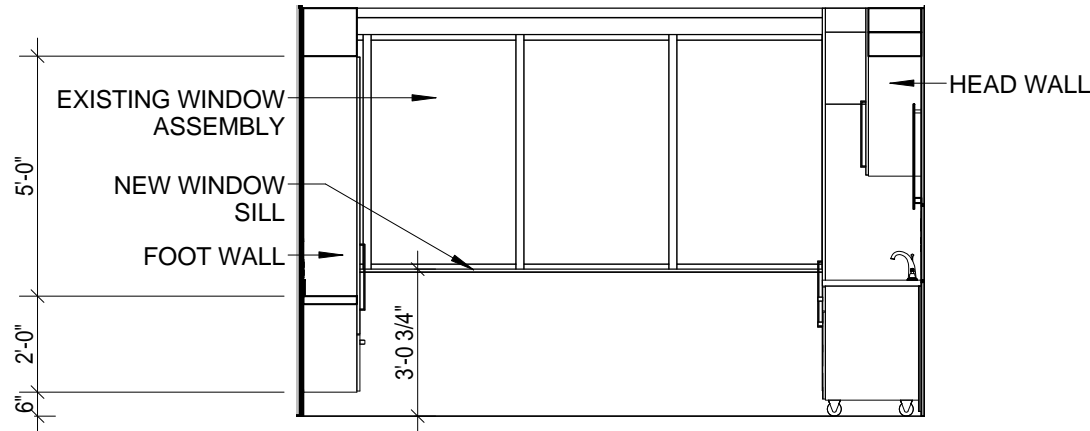
NUMBER	DESCRIPTION
T01	FOLD-DOWN GRAB BARS
T02	QUARTZ COUNTERTOP W/ UNDERMOUNT BOWL. COUNTERTOP CUT-OUT TO BE FLUSH WITH BOWL.
T03	SHOWER CURTAIN ABOVE
T04	1" L SHAPED GRAB BAR
T05	SHOWER HEAD
T06	MIRROR
T07	TOILET TISSUE DISPENSER - OFCI
T08	PAPER TOWEL DISPENSER - OFCI
T09	PAPER TOWEL DISPENSER - OFCI
T10	SOAP DISPENSER - OFCI
T11	HAND SANITIZER DISPENSER - OFCI
T12	FOLD-DOWN SHOWER SEAT
T13	SHARPS DISPOSAL - OFCI
T14	LOCKABLE MEDICINE CABINET
T15	1-5" TOWEL BAR
T16	DOUBLE ROBE HOOK
T17	WASTE PAPER BASKET - OFCI



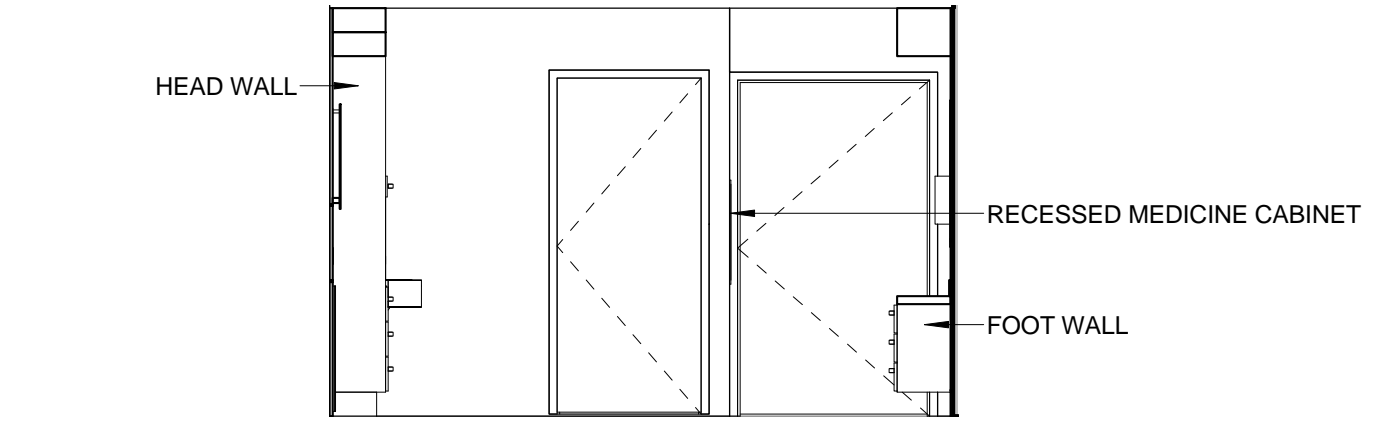
2 INTERIOR ELEVATION - RESIDENT ROOM - HEADWALL
1/2" = 1'-0"



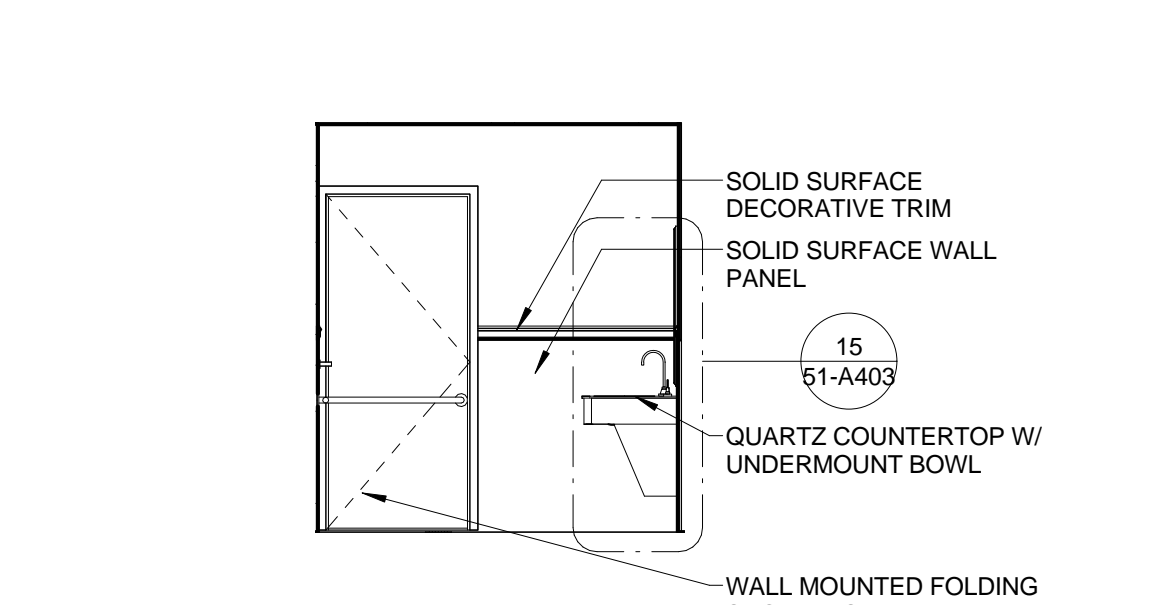
3 INTERIOR ELEVATION - RESIDENT ROOM - FOOTWALL
1/2" = 1'-0"



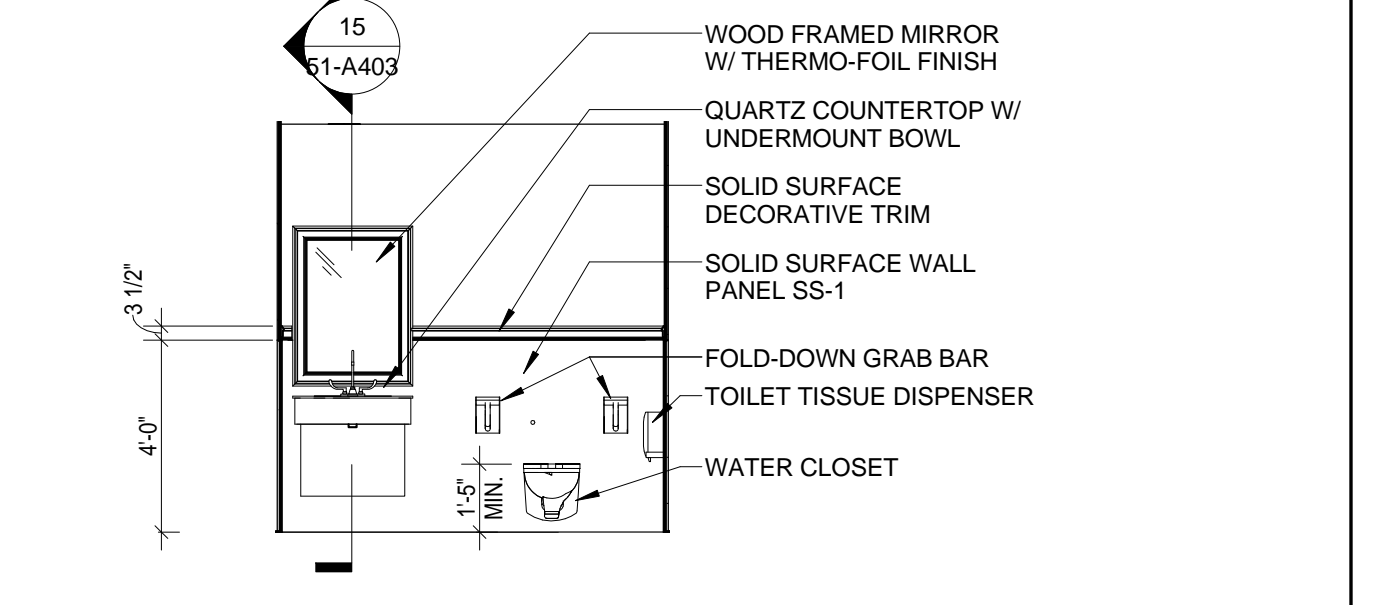
4 INTERIOR ELEVATION - RESIDENT ROOM - WINDOW WALL
1/4" = 1'-0"



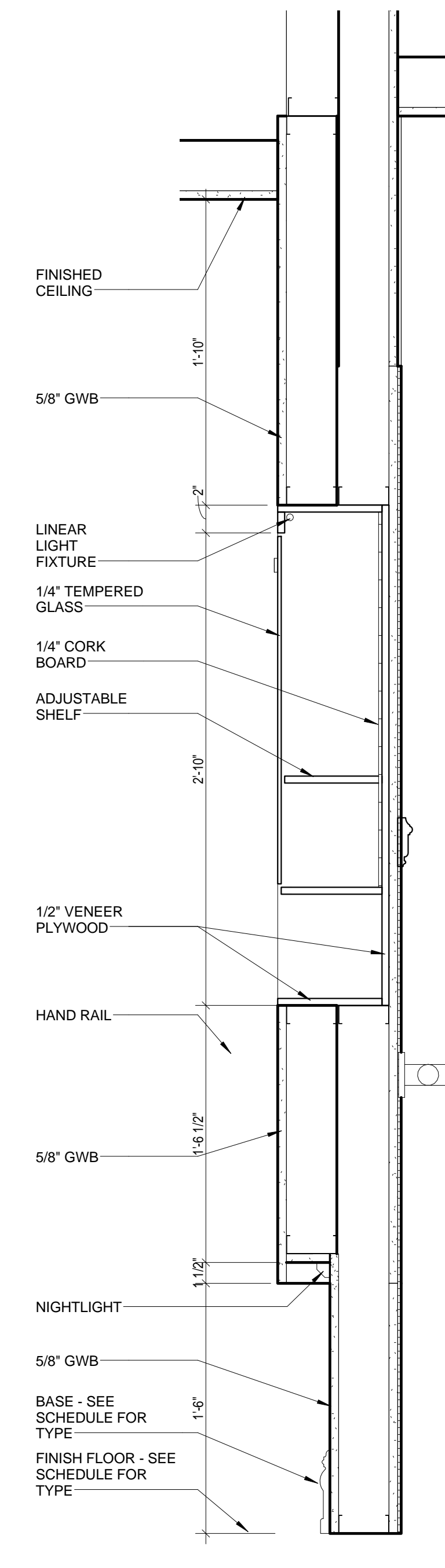
5 INTERIOR ELEVATION - RESIDENT ROOM - FRONT WALL
1/4" = 1'-0"



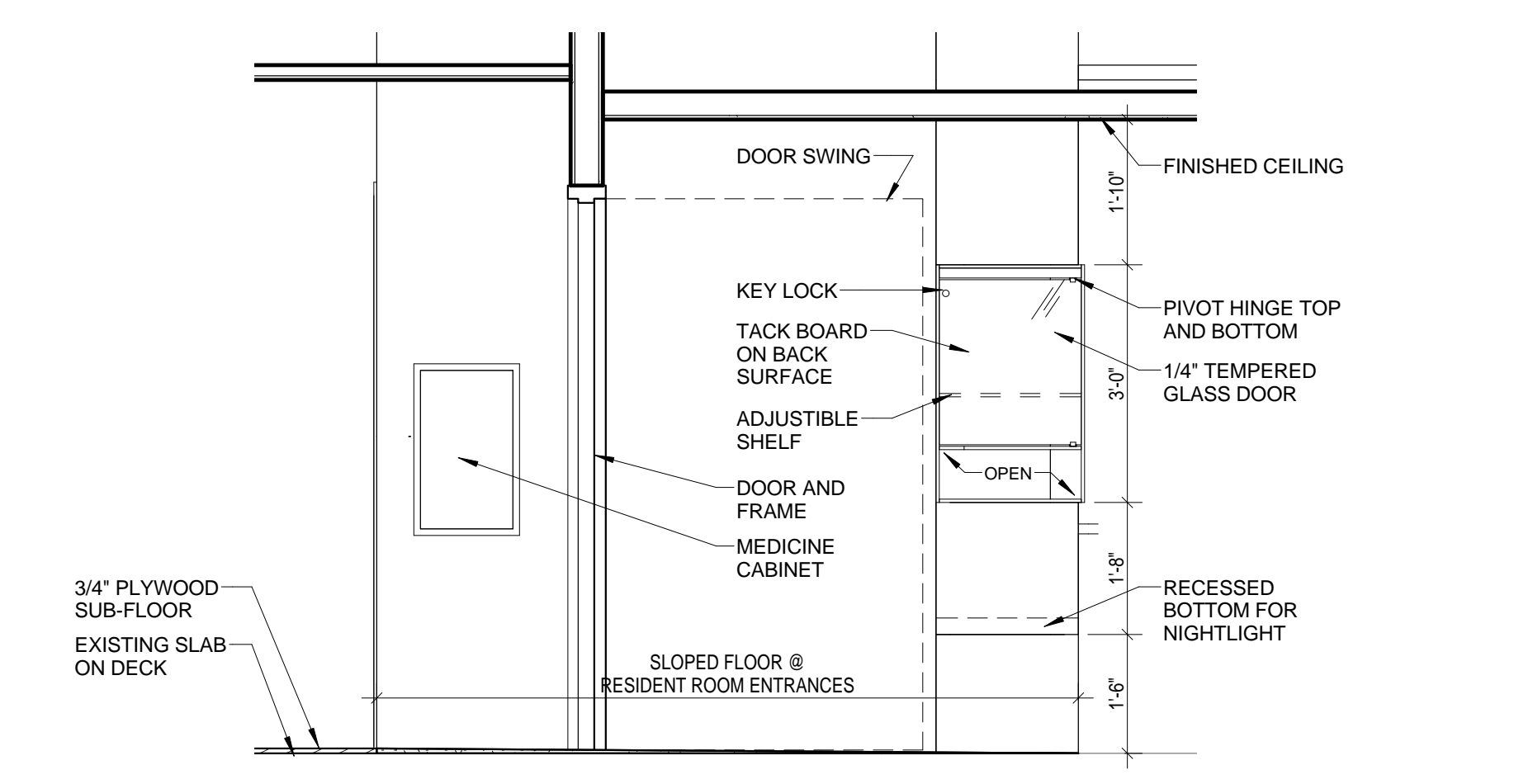
6 INTERIOR ELEVATION - RESIDENT BATHROOM - FRONT WALL
1/4" = 1'-0"



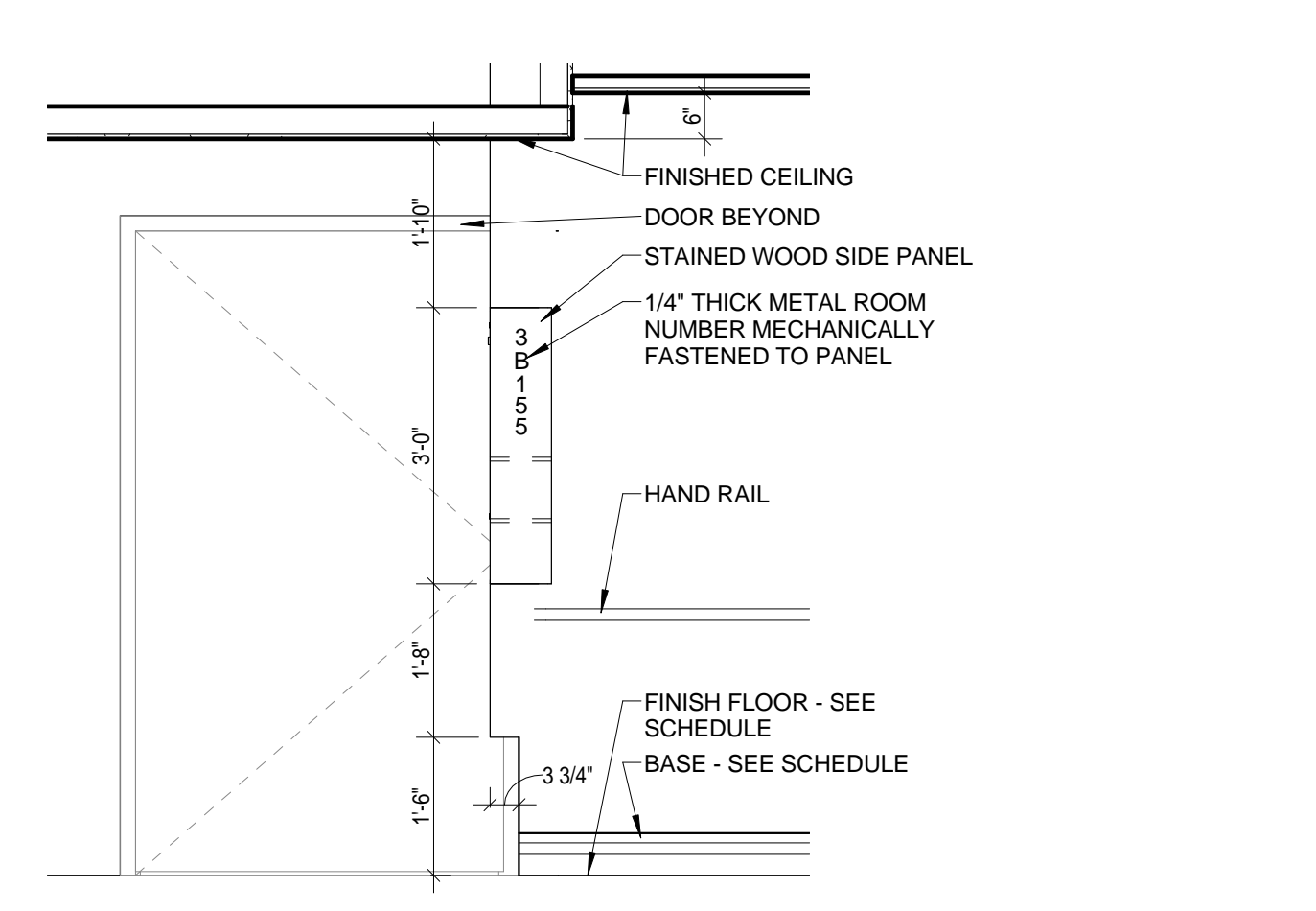
7 INTERIOR ELEVATION - RESIDENT BATHROOM - SINK WALL
1/4" = 1'-0"



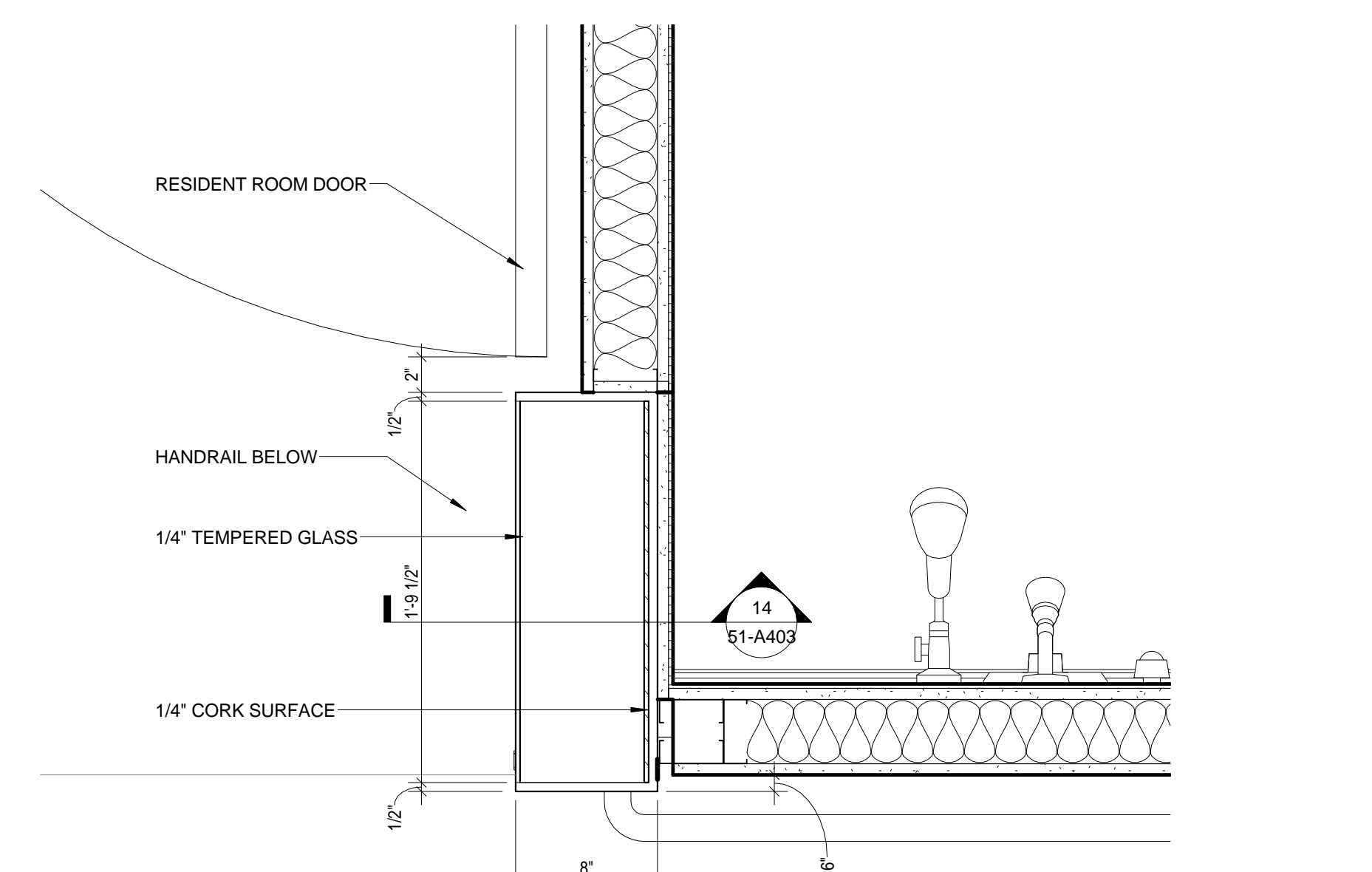
14 SECTION DETAIL - MEMORY BOX
1 1/2" = 1'-0"



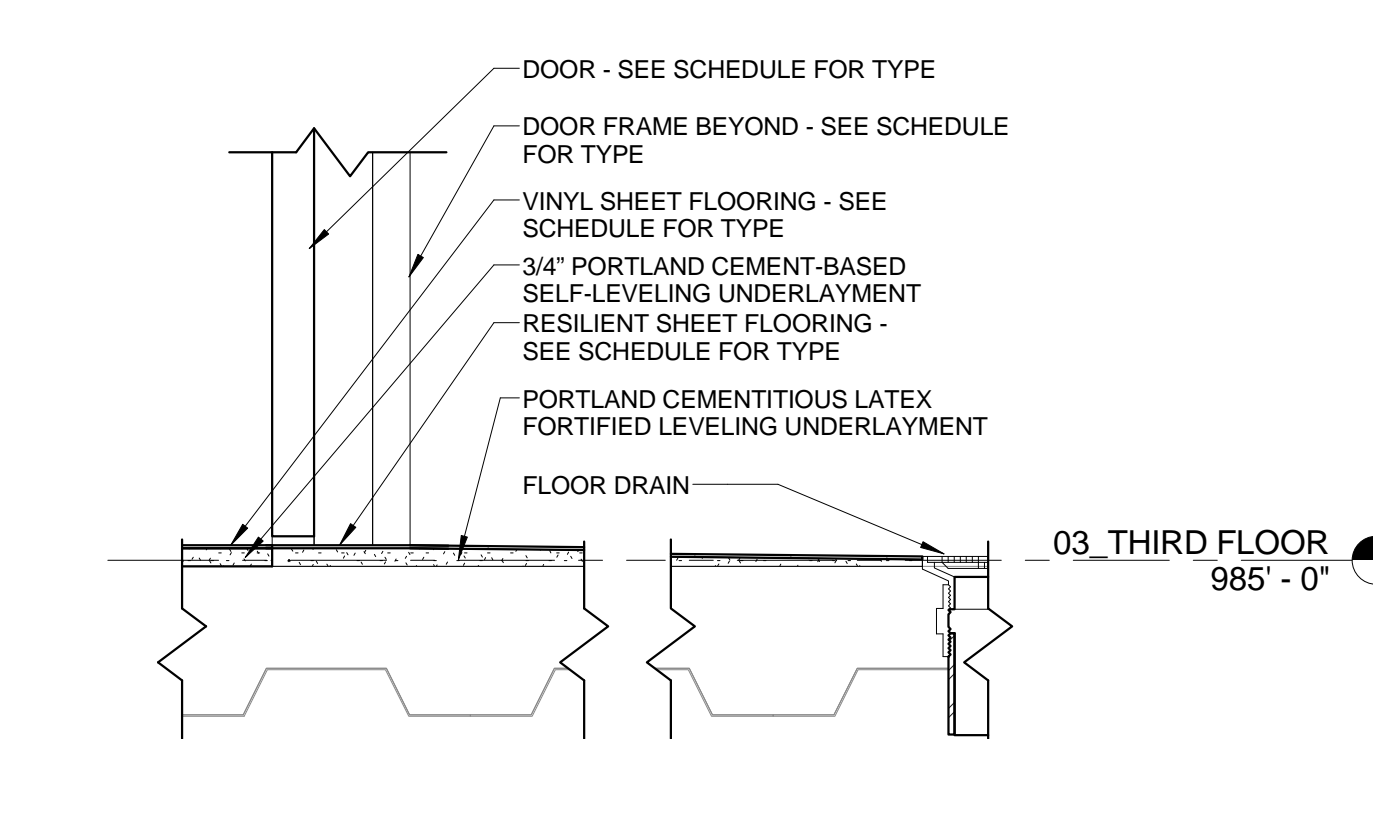
10 INTERIOR ELEVATION - MEMORY BOX FRONT
1/2" = 1'-0"



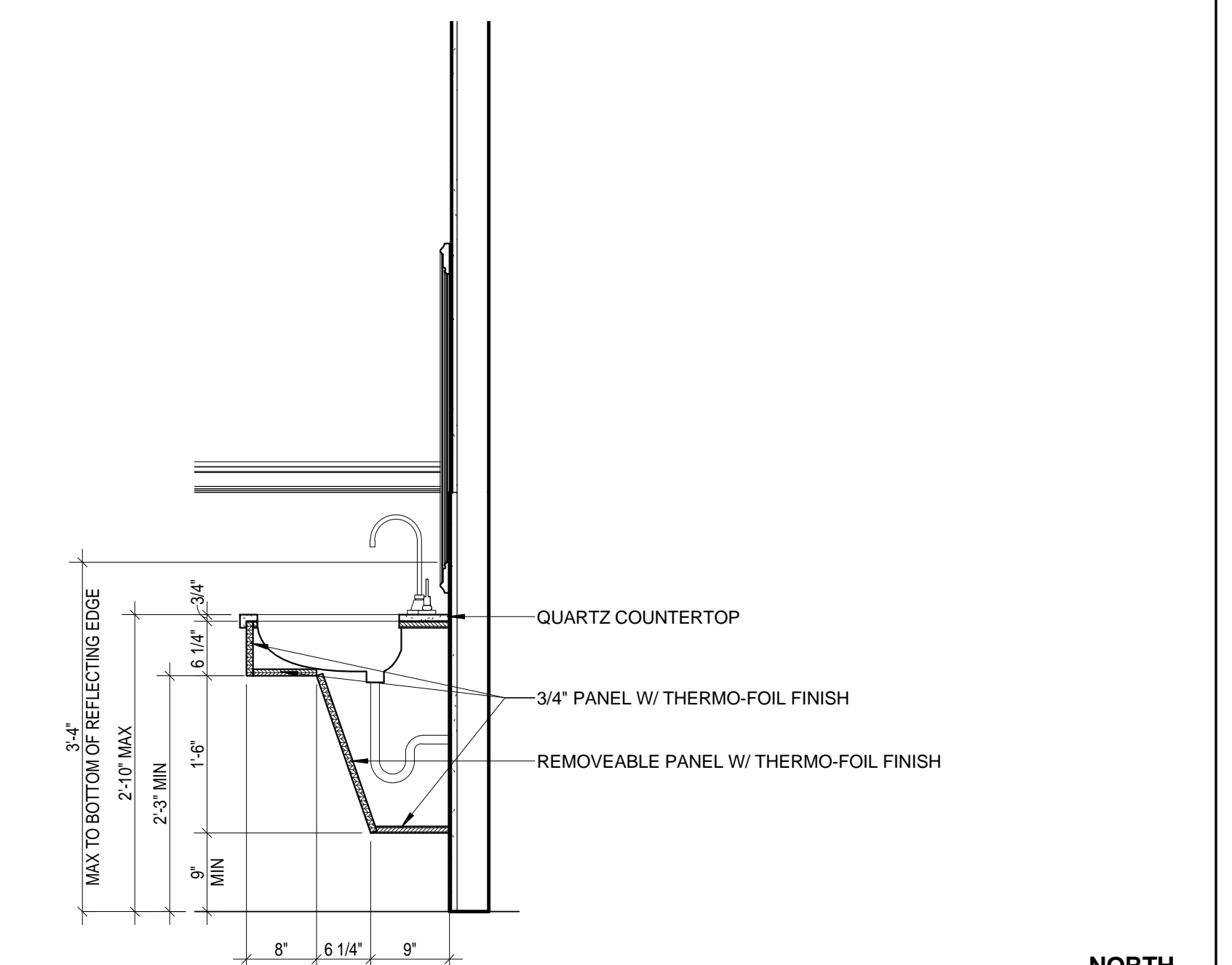
11 INTERIOR ELEVATION - MEMORY BOX EDGE
1/2" = 1'-0"



12 PLAN DETAIL - MEMORY BOX
1 1/2" = 1'-0"



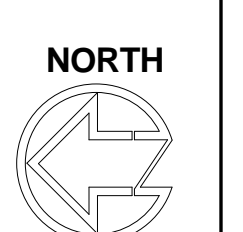
13 SECTION DETAIL - RESIDENT BATHROOM THRESHOLD
1 1/2" = 1'-0"



15 SECTION - LAV - RESIDENT TOILET ROOM
3/4" = 1'-0"

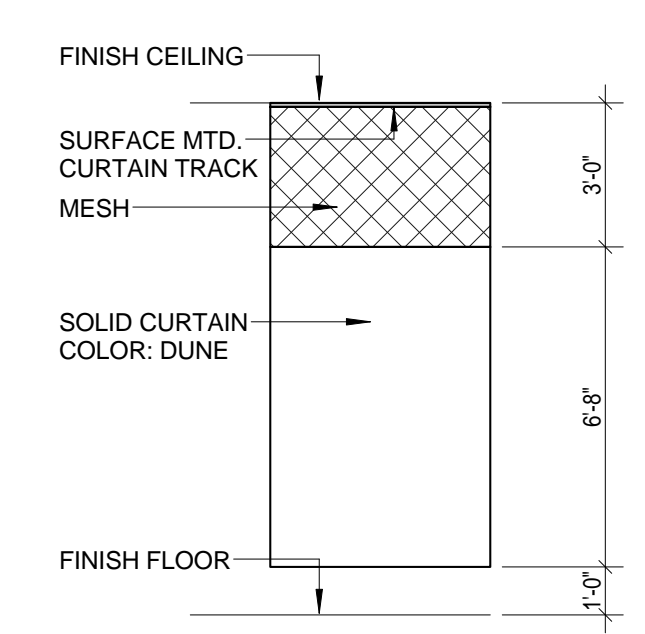
CONSULTANTS: AECOM 3101 WILSON BOULEVARD, SUITE 900 ARLINGTON, VA 22201 PH: 703.682.4900 FAX: 703.682.4901 www.aecom.com		ARCHITECTS/ENGINEERS: A E works 6587 HAMILTON AVENUE PITTSBURGH, PENNSYLVANIA 15206 PH: 412.287.7353 FAX: 412.287.7354 www.ae-works.com		Approved: Director, VA Pittsburgh Healthcare System Approved: Chief Operating Officer Approved: Vice President, Facilities Management Approved: Manager, Projects Section	Drawing Title ENLARGED PLANS, ELEVATIONS & DETAILS Approved: Site Manager Approved: Project Manager	Project Title HZ RENOVATE B51 (UNIT 3B) Location 1010 Delafield Road, Pittsburgh, PA 15215 Date 11/09/2012	Project Number 646-09-130 Building Number #51 Drawing Number 51-A403 Dwg. 14 of 91	Office of Construction and Facilities Management Department of Veterans Affairs
---	--	--	--	--	--	---	---	---

FULLY SPRINKLERED
 BID DOCUMENTS

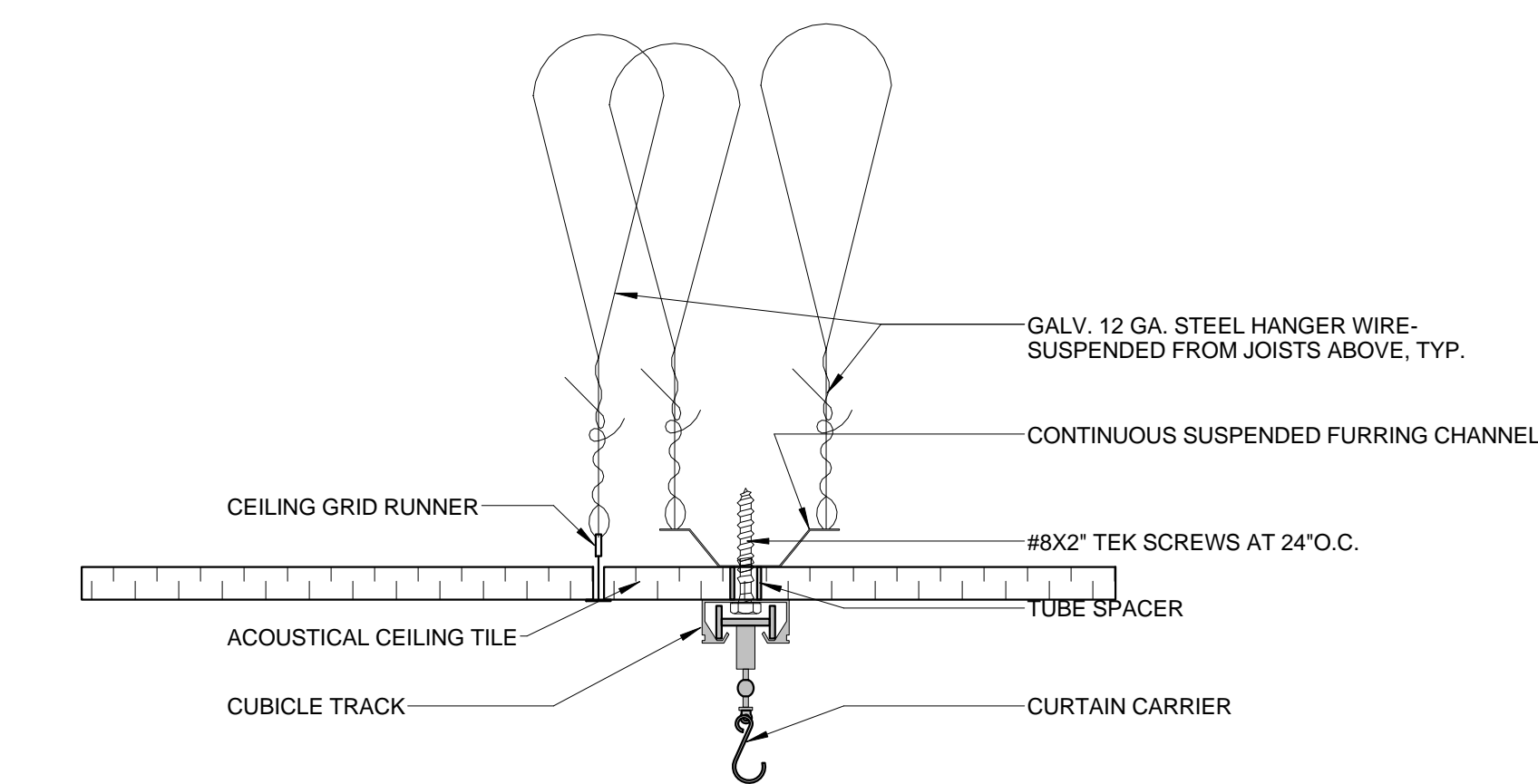


Scale indicators on the left margin:
 1: three eighths inch = one foot
 2: one and one half inch = one foot
 3: one inch = one foot
 4: three quarters inch = one foot
 5: one half inch = one foot
 6: one quarter inch = one foot
 7: one eighth inch = one foot
 8: one quarter inch = one foot
 9: one eighth inch = one foot
 10: one quarter inch = one foot
 11: one eighth inch = one foot
 12: one quarter inch = one foot
 13: one eighth inch = one foot
 14: one quarter inch = one foot
 15: one eighth inch = one foot

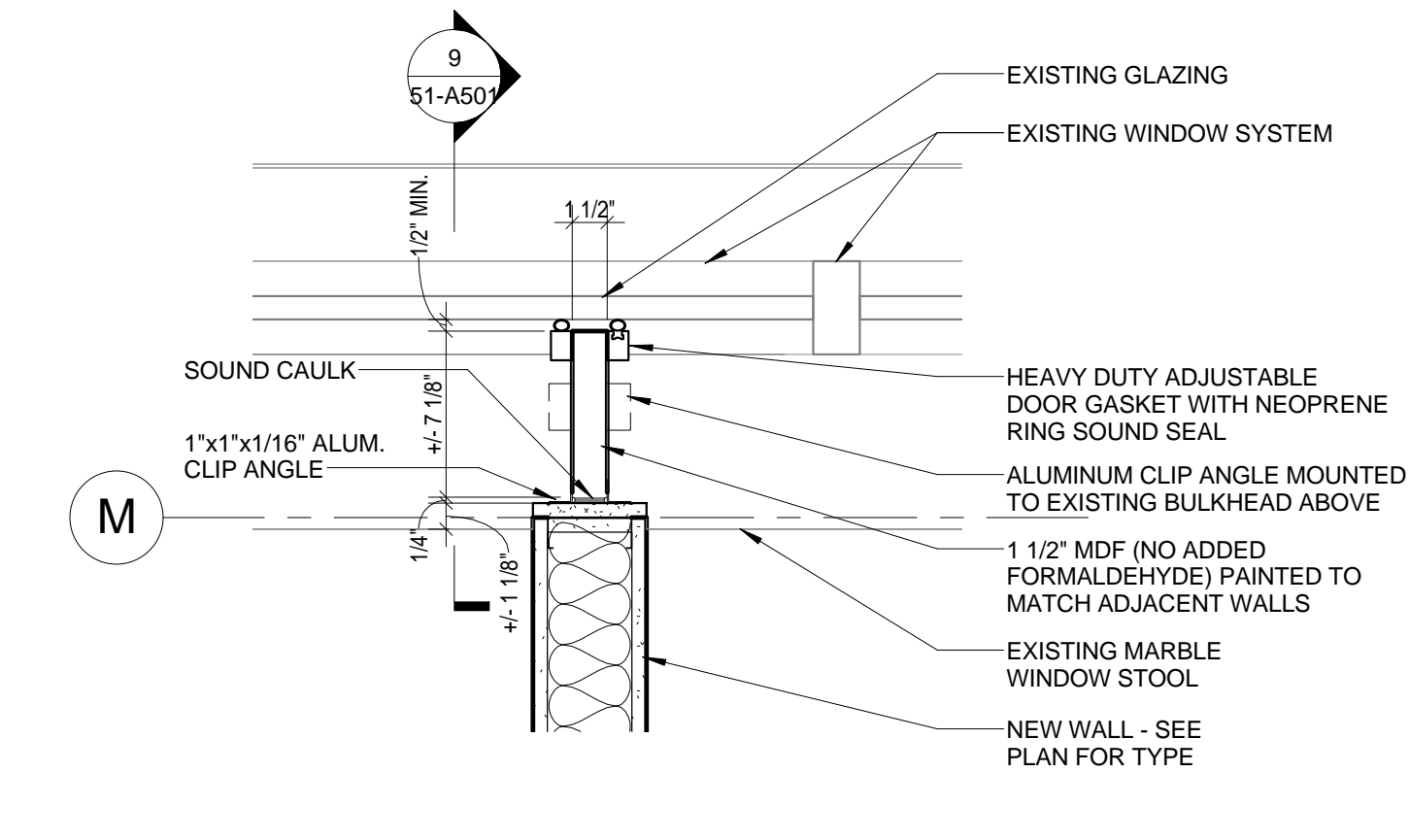
three eighths inch = one foot
 one and one half inch = one foot
 one inch = one foot
 three quarters inch = one foot
 one half inch = one foot
 one quarter inch = one foot
 one eighth inch = one foot
 one quarter inch = one foot
 one eighth inch = one foot



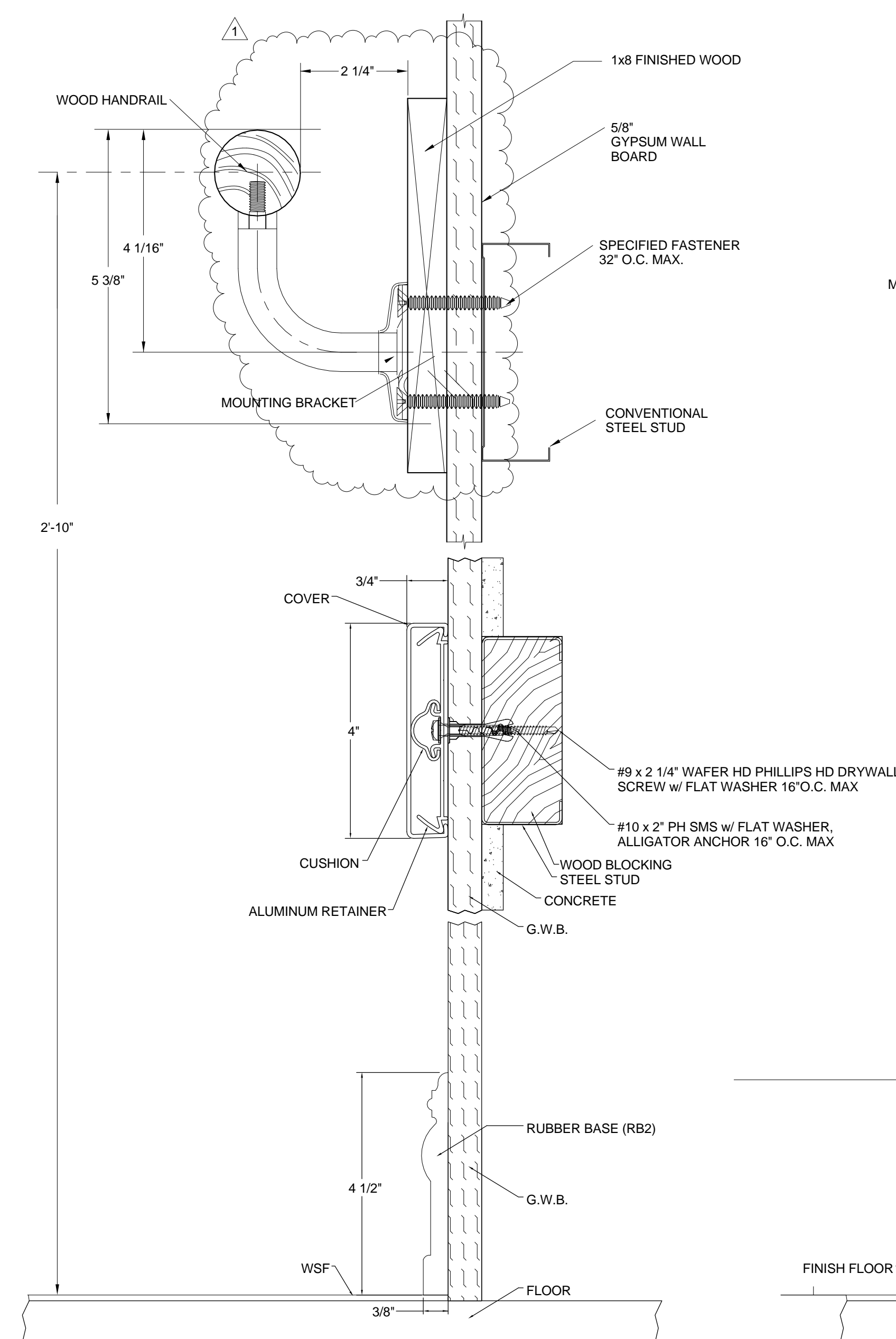
2 CURTAIN ELEVATION
1/4" = 1'-0"



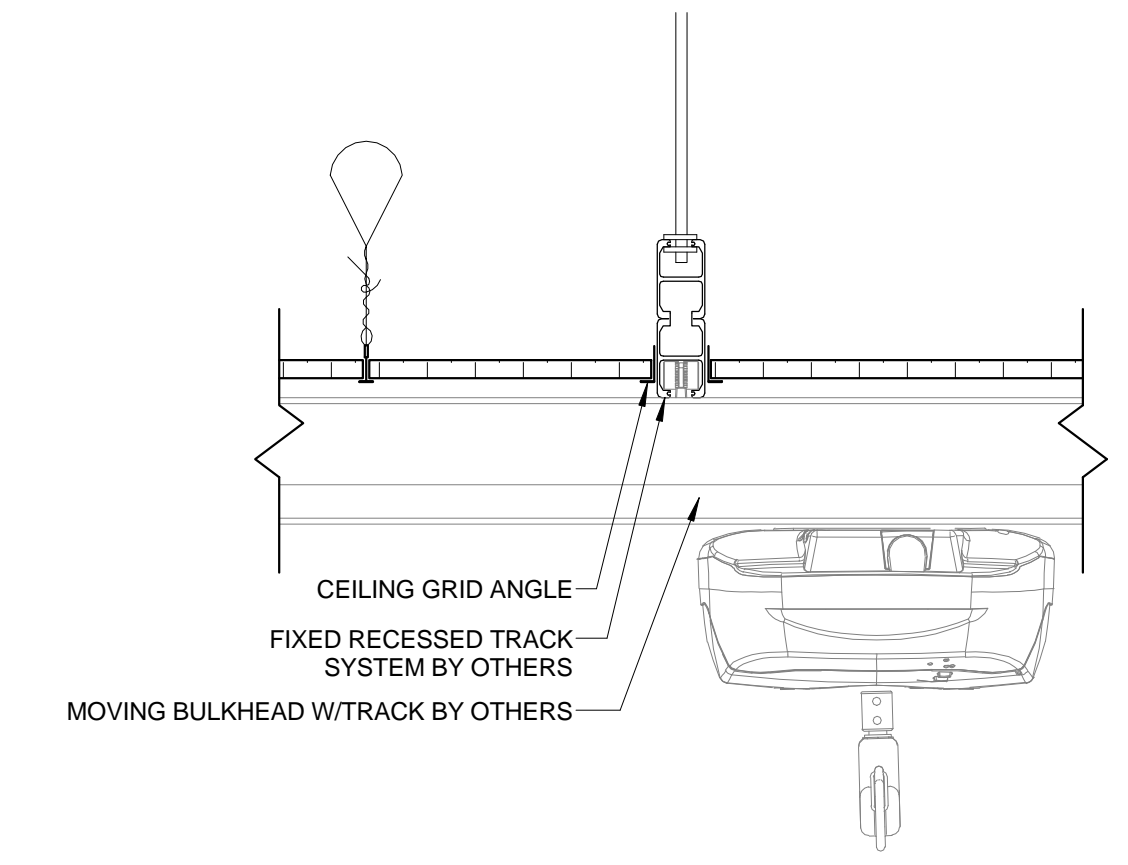
3 CURTAIN TRACK DETAIL
3" = 1'-0"



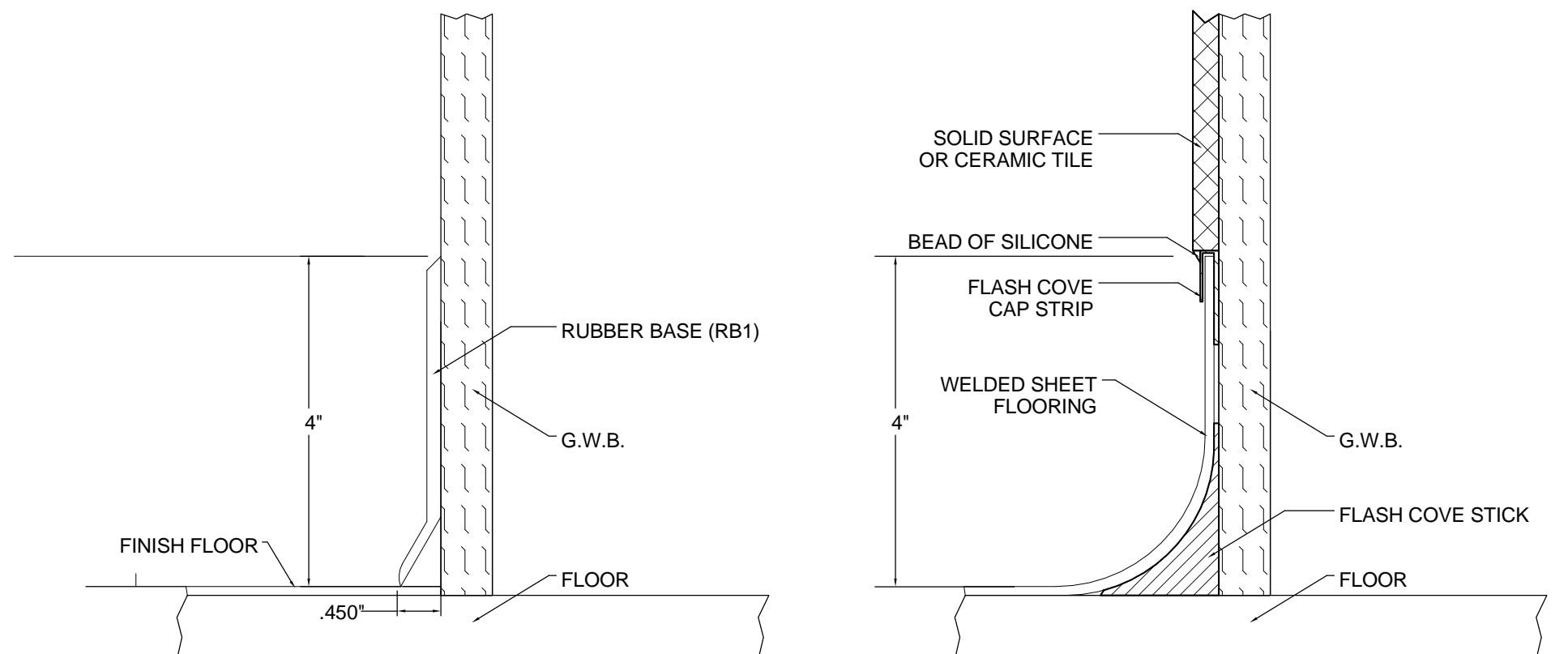
5 PLAN DETAIL - TYPICAL WINDOW ENCLOSURE
1 1/2" = 1'-0"



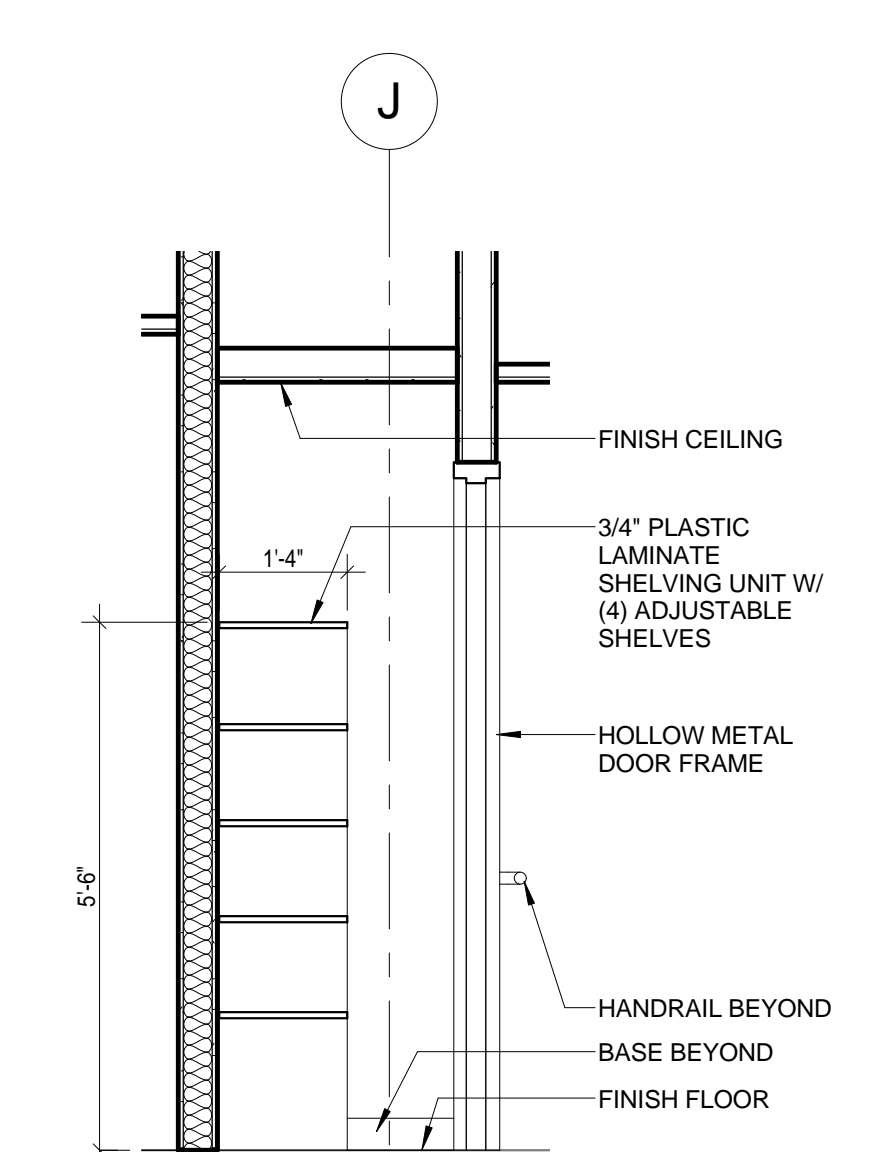
1 SECTION DETAIL - WALL PROTECTION
1/4" = 1'-0"



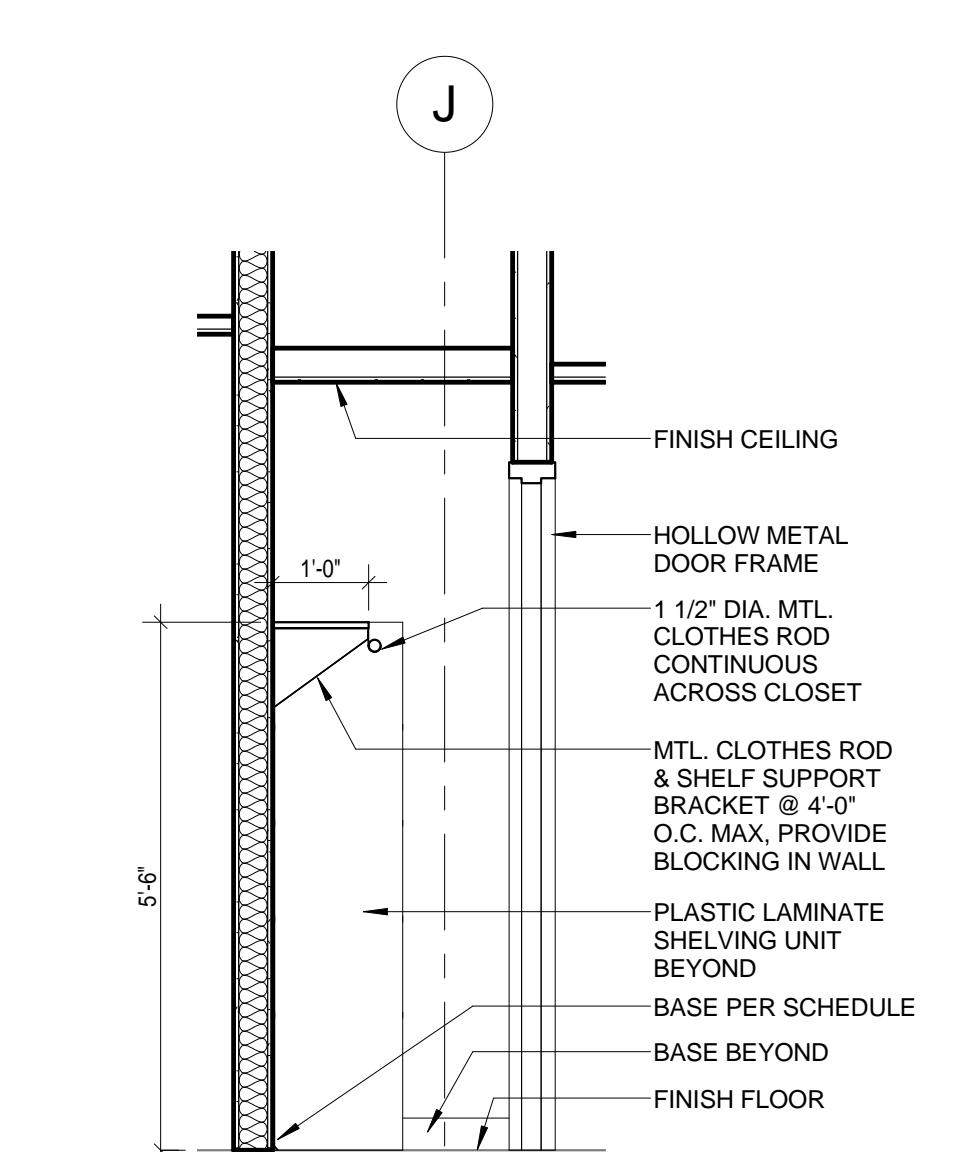
4 PATIENT LIFT TRACK
1 1/2" = 1'-0"



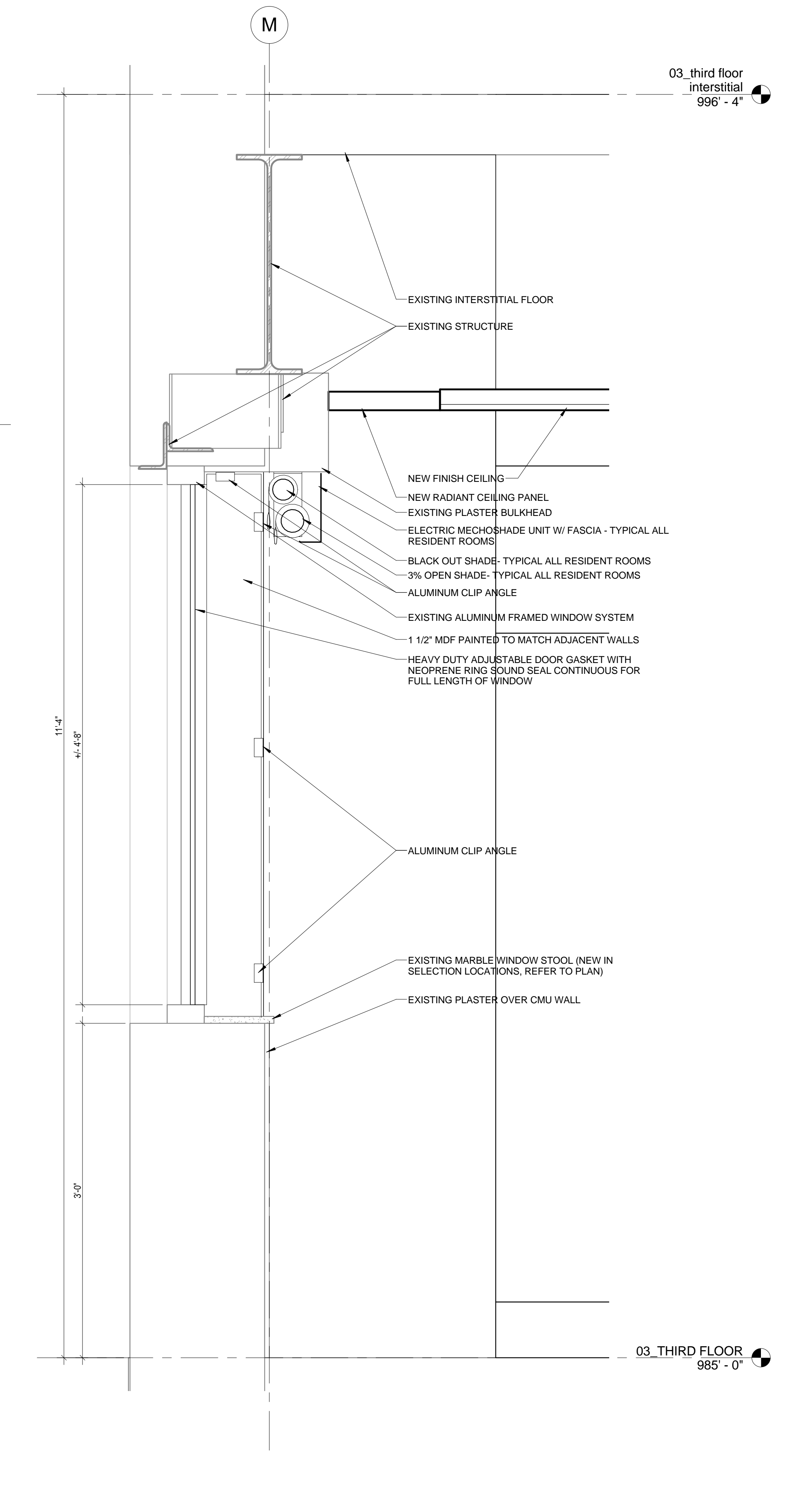
8 CORNER GUARD
1/4" = 1'-0"



6 SECTION - CLOTHING STORAGE - SHELVES
1/2" = 1'-0"



7 SECTION - CLOTHING STORAGE - ROD
1/2" = 1'-0"



9 SECTION DETAIL - WALL CLOSURE AT WINDOW
1 1/2" = 1'-0"

FULLY SPRINKLERED
 BID DOCUMENTS

CONSULTANTS: AECOM 3101 WILSON BOULEVARD, SUITE 900 ARLINGTON, VA 22201 PH: 703.682.4900 FAX: 703.682.4901 www.aecom.com		ARCHITECTS/ENGINEERS: A E works 6587 HAMILTON AVENUE PITTSBURGH, PENNSYLVANIA 15206 PH: 412.287.7353 FAX: 412.287.7354 www.ae-works.com		Approved: Director, VA Pittsburgh Healthcare System Approved: Chief Operating Officer Approved: Vice President, Facilities Management Approved: Manager, Projects Section		Drawing Title DETAILS Approved: Site Manager Approved: Project Manager		Project Title HZ RENOVATE B51 (UNIT 3B) Location 1010 Delafield Road, Pittsburgh, PA 15215 Date 11/09/2012		Project Number 646-09-130 Building Number #51 Drawing Number 51-A501 Dwg. 18 of 91		Office of Construction and Facilities Management Department of Veterans Affairs	
ADDENDUM #1 Revisions:	5/29/2013 Date												

FINISH SCHEDULE - 01_GROUND FLOOR										
Number	Name	Floor	Base	Walls				Ceiling	Remarks	
				North	South	East	West			
CG5	CORRIDOR	ETR	ETR	ETR	ETR	PT1	ETR	ETR		
CG6	CORRIDOR	ETR	ETR	PT1	ETR	ETR	ETR	ETR		
CG7	CORRIDOR	LVT1/LVT2	RB1	PT1	PT1	PT1	PT1	PT1		
GA118	EMPLOYEE FITNESS	RB1	RB1	PT6	PT6	PT3	MIRROR/PT6	ACT		
GA119a	WOMEN'S LOCKER ROOM	SF1	SF1	PT1	PT1	PT1	PT1	GWB/ACT		
GA119b	VESTIBULE	SF1	SF1	PT5	PT1	PT1	PT1	GWB		
GA119c	WOMEN'S TOILET ROOM	SF1	SF1	CT & PT	CT & PT	CT & PT	CT & PT	GWB	CT WAINSCOT 5'-0" AFF TYPICAL, CT FULL HEIGHT IN SHOWER AREAS	
GA119d	LACTATION	SF1	SF1	PT3	CT2	PT2	PT3	ACT		
GA119e	SHOWER	SF1	SF1	CT	CT	CT	CT	ACT		
GA120a	MEN'S LOCKER ROOM	SF1	SF1	PT1	PT1	PT1	PT3	GWB/ACT		
GA120b	VESTIBULE	SF1	SF1	PT4	PT1	PT1	PT1	GWB		
GA120c	MEN'S TOILET ROOM	SF1	SF1	CT & PT	CT & PT	CT & PT	CT & PT	GWB	CT WAINSCOT 5'-0" AFF TYPICAL, CT FULL HEIGHT IN SHOWER AREAS	
GA120d	SHOWER	SF1	SF1	CT	CT	CT	CT	ACT		

FINISH SCHEDULE - 03_THIRD FLOOR										
Number	Name	Floor	Base	Walls				Ceiling	Remarks	
				North	South	East	West			
#2	STAIR	ETR	ETR	ETR	ETR	ETR	ETR	ETR		
#3	STAIR	ETR	ETR	ETR	ETR	ETR	ETR	ETR		
3A101	LAUNDRY	ETR	ETR	ETR	ETR	ETR	ETR	ETR		
3A102	PHARMACY	ETR	ETR	ETR	ETR	ETR	ETR	ETR		
3A103	CLASSROOM	ETR	ETR	ETR	ETR	ETR	ETR	ETR		
3A103a	STORAGE	ETR	ETR	ETR	ETR	ETR	ETR	ETR		
3A104	STORAGE	ETR	ETR	ETR	ETR	ETR	ETR	ETR		
3A106	EMPLOYEE LOUNGE	WSF-04	RB1	PT6	PT7	PT7	PT7	ACT		
3A107	REC. THERAPIST'S OFFICE	CPT	RB1	PT6	PT7	PT7	PT7	ACT		
3A148	EQUIPMENT STORAGE	ETR	ETR	ETR	ETR	ETR	ETR	ETR		
3A191	HAC	ETR	ETR	ETR	ETR	ETR	ETR	ETR		
3A192	TOILET ROOM	WSF-01	WSF-01	SOLIDSURFACE/PT1	SOLIDSURFACE/PT8	SOLIDSURFACE/PT1	SOLIDSURFACE/PT8	ETR	SOLID SURFACE WALL PANELS 4'-0" AFF TYPICAL	
3A193	TOILET ROOM	WSF-01	WSF-01	SOLIDSURFACE/PT1	SOLIDSURFACE/PT8	SOLIDSURFACE/PT1	SOLIDSURFACE/PT8	ETR	SOLID SURFACE WALL PANELS 4'-0" AFF TYPICAL	
3B150	FLEX OFFICE	CPT	RB1	PT7	PT7	PT7	PT7	ACT		
3B151	PHYSICIAN'S OFFICE	CPT	RB1	PT7	PT7	PT7	PT7	ACT		
3B152	NURSE MANAGER'S OFFICE	CPT	RB1	PT7	PT7	PT7	PT7	ACT		
3B153	CLEAN ROOM	WSF-02	WSF-02	PT1	PT1	PT1	PT1	GWB		
3B154	ONE BED ROOM	WSF-03	WSF-03	PT2	PT2	PT2	PT2	ACT		
3B154A	BATHROOM	WSF-03	WSF-03	SOLIDSURFACE/PT8	SOLIDSURFACE/PT8	SOLIDSURFACE/PT8	SOLIDSURFACE/PT8	GWB	SOLID SURFACE WALL PANELS 4'-0" AFF TYPICAL, 7'-0" AFF AT SHOWER FRONT AND SIDE WALLS	
3B155	ONE BED ROOM	WSF-03	WSF-03	PT5	PT5	PT5	PT5	ACT		
3B155A	BATHROOM	WSF-01	WSF-01	SOLIDSURFACE/PT8	SOLIDSURFACE/PT8	SOLIDSURFACE/PT8	SOLIDSURFACE/PT8	GWB	SOLID SURFACE WALL PANELS 4'-0" AFF TYPICAL, 7'-0" AFF AT SHOWER FRONT AND SIDE WALLS	
3B156	STAFF WORK AREA	WSF-04	RB2	PT1	PT3	PT1	PT1	GWB		
3B157	MEDICAL SUPPLIES	WSF-04	PT1	PT1	PT1	PT1	PT1	GWB		
3B158	DEN	WSF-02	RB2	PT5	PT5	PT5	WC1	ACT		
3B159	ONE BED ROOM	WSF-03	WSF-03	PT2	PT5	PT5	PT2	ACT		
3B159A	BATHROOM	WSF-01	WSF-01	SOLIDSURFACE/PT8	SOLIDSURFACE/PT8	SOLIDSURFACE/PT8	SOLIDSURFACE/PT8	GWB	SOLID SURFACE WALL PANELS 4'-0" AFF TYPICAL, 7'-0" AFF AT SHOWER FRONT AND SIDE WALLS	
3B160	ONE BED ROOM	WSF-03	WSF-03	PT5	PT2	PT5	PT5	ACT		
3B160A	BATHROOM	WSF-01	WSF-01	SOLIDSURFACE/PT8	SOLIDSURFACE/PT8	SOLIDSURFACE/PT8	SOLIDSURFACE/PT8	GWB	SOLID SURFACE WALL PANELS 4'-0" AFF TYPICAL, 7'-0" AFF AT SHOWER FRONT AND SIDE WALLS	
3B161	LIVING	WSF-05	RB2	PT10	WC1	PT9	PT9	ACT1		
3B162	DINING	WSF-05	RB2	---	---	PT9	PT9	ACT1		
3B163	KITCHEN	WSF-06	RB2	---	---	CT1	CT1	GWB		
3B164	ONE BED ROOM	WSF-03	WSF-03	PT2	PT5	PT5	PT2	ACT		
3B164A	BATHROOM	WSF-01	WSF-01	SOLIDSURFACE/PT8	SOLIDSURFACE/PT8	SOLIDSURFACE/PT8	SOLIDSURFACE/PT8	GWB	SOLID SURFACE WALL PANELS 4'-0" AFF TYPICAL, 7'-0" AFF AT SHOWER FRONT AND SIDE WALLS	
3B165	ONE BED ROOM	WSF-03	WSF-03	PT5	PT2	PT5	PT2	ACT		
3B165A	BATHROOM	WSF-01	WSF-01	SOLIDSURFACE/PT8	SOLIDSURFACE/PT8	SOLIDSURFACE/PT8	SOLIDSURFACE/PT8	GWB	SOLID SURFACE WALL PANELS 4'-0" AFF TYPICAL, 7'-0" AFF AT SHOWER FRONT AND SIDE WALLS	
3B166	ONE BED ROOM	WSF-03	WSF-03	PT2	PT5	PT5	PT2	ACT		
3B166A	BATHROOM	WSF-01	WSF-01	SOLIDSURFACE/PT8	SOLIDSURFACE/PT8	SOLIDSURFACE/PT8	SOLIDSURFACE/PT8	GWB	SOLID SURFACE WALL PANELS 4'-0" AFF TYPICAL, 7'-0" AFF AT SHOWER FRONT AND SIDE WALLS	
3B167	ONE BED ROOM	WSF-03	WSF-03	PT5	PT2	PT5	PT2	ACT		
3B167A	BATHROOM	WSF-01	WSF-01	SOLIDSURFACE/PT8	SOLIDSURFACE/PT8	SOLIDSURFACE/PT8	SOLIDSURFACE/PT8	GWB	SOLID SURFACE WALL PANELS 4'-0" AFF TYPICAL, 7'-0" AFF AT SHOWER FRONT AND SIDE WALLS	
3B168	ONE BED ROOM	WSF-03	WSF-03	PT2	PT5	PT5	PT2	ACT		
3B168A	BATHROOM	WSF-01	WSF-01	SOLIDSURFACE/PT8	SOLIDSURFACE/PT8	SOLIDSURFACE/PT8	SOLIDSURFACE/PT8	GWB	SOLID SURFACE WALL PANELS 4'-0" AFF TYPICAL, 7'-0" AFF AT SHOWER FRONT AND SIDE WALLS	
3B169	ONE BED ROOM	WSF-03	WSF-03	PT5	PT2	PT5	PT2	ACT		
3B169A	BATHROOM	WSF-01	WSF-01	SOLIDSURFACE/PT8	SOLIDSURFACE/PT8	SOLIDSURFACE/PT8	SOLIDSURFACE/PT8	GWB	SOLID SURFACE WALL PANELS 4'-0" AFF TYPICAL, 7'-0" AFF AT SHOWER FRONT AND SIDE WALLS	
3B170	ONE BED ROOM	WSF-03	WSF-03	PT2	PT5	PT5	PT2	ACT		
3B170A	BATHROOM	WSF-01	WSF-01	SOLIDSURFACE/PT8	SOLIDSURFACE/PT8	SOLIDSURFACE/PT8	SOLIDSURFACE/PT8	GWB	SOLID SURFACE WALL PANELS 4'-0" AFF TYPICAL, 7'-0" AFF AT SHOWER FRONT AND SIDE WALLS	
3B171	ONE BED ROOM	WSF-03	WSF-03	PT2	PT5	PT5	PT2	ACT		
3B171A	BATHROOM	WSF-01	WSF-01	SOLIDSURFACE/PT8	SOLIDSURFACE/PT8	SOLIDSURFACE/PT8	SOLIDSURFACE/PT8	GWB	SOLID SURFACE WALL PANELS 4'-0" AFF TYPICAL, 7'-0" AFF AT SHOWER FRONT AND SIDE WALLS	
3B172	MECHANICAL ROOM	ETR	ETR	ETR	ETR	ETR	ETR	ETR		
3B173	TELE.	ETR	ETR	ETR	ETR	ETR	ETR	ETR		
3B174	ELEC.	ETR	ETR	ETR	ETR	ETR	ETR	ETR		
3B175	HAC	ETR	ETR	ETR	ETR	ETR	ETR	ETR		
3B176	CHART	WSF-04	WSF-04	PT3	PT3	PT3	PT3	GWB		
3B177	QUIET ROOM	WSF-02	RB02	PT4	WC1	PT4	PT4	GWB		
3B178	EMPLOYEE BATHROOM	WSF-01	WSF-01	SOLIDSURFACE/PT8	SOLIDSURFACE/PT8	SOLIDSURFACE/PT8	SOLIDSURFACE/PT8	GWB	SOLID SURFACE WALL PANELS 4'-0" AFF TYPICAL	
3B178A	SPECIAL NEEDS ROOM	WSF-03	WSF-03	PT4	PT2	PT4	PT2	ACT		
3B179A	BATHROOM	WSF-01	WSF-01	SOLIDSURFACE/PT8	SOLIDSURFACE/PT8	SOLIDSURFACE/PT8	SOLIDSURFACE/PT8	GWB	SOLID SURFACE WALL PANELS 4'-0" AFF TYPICAL, 7'-0" AFF AT SHOWER FRONT AND SIDE WALLS	
3B180	ONE BED ROOM	WSF-03	WSF-03	PT2	PT4	PT2	PT4	ACT		
3B180A	BATHROOM	WSF-01	WSF-01	SOLIDSURFACE/PT8	SOLIDSURFACE/PT8	SOLIDSURFACE/PT8	SOLIDSURFACE/PT8	GWB	SOLID SURFACE WALL PANELS 4'-0" AFF TYPICAL, 7'-0" AFF AT SHOWER FRONT AND SIDE WALLS	
3B181	ONE BED ROOM	WSF-03	WSF-03	PT2	PT4	PT2	PT4	ACT		
3B181A	BATHROOM	WSF-01	WSF-01	SOLIDSURFACE/PT8	SOLIDSURFACE/PT8	SOLIDSURFACE/PT8	SOLIDSURFACE/PT8	GWB	SOLID SURFACE WALL PANELS 4'-0" AFF TYPICAL, 7'-0" AFF AT SHOWER FRONT AND SIDE WALLS	
3B182	ONE BED ROOM	WSF-03	WSF-03	PT2	PT4	PT2	PT4	ACT		
3B182A	BATHROOM	WSF-01	WSF-01	SOLIDSURFACE/PT8	SOLIDSURFACE/PT8	SOLIDSURFACE/PT8	SOLIDSURFACE/PT8	GWB	SOLID SURFACE WALL PANELS 4'-0" AFF TYPICAL, 7'-0" AFF AT SHOWER FRONT AND SIDE WALLS	
3B183	ONE BED ROOM	WSF-03	WSF-03	PT4	PT2	PT4	PT2	ACT		
3B183A	BATHROOM	WSF-01	WSF-01	SOLIDSURFACE/PT8	SOLIDSURFACE/PT8	SOLIDSURFACE/PT8	SOLIDSURFACE/PT8	GWB	SOLID SURFACE WALL PANELS 4'-0" AFF TYPICAL, 7'-0" AFF AT SHOWER FRONT AND SIDE WALLS	
3B184	ONE BED ROOM	WSF-03	WSF-03	PT2	PT4	PT2	PT4	ACT		
3B184A	BATHROOM	WSF-01	WSF-01	SOLIDSURFACE/PT8	SOLIDSURFACE/PT8	SOLIDSURFACE/PT8	SOLIDSURFACE/PT8	GWB	SOLID SURFACE WALL PANELS 4'-0" AFF TYPICAL, 7'-0" AFF AT SHOWER FRONT AND SIDE WALLS	
3B185	LIVING	WSF-05	RB2	---	PT10	PT9	WC1	ACT1		
3B186	DINING	WSF-05	RB2	---	---	---	---	ACT1		
3B187	CHART	WSF-04	RB2	PT3	PT3	PT3	PT3	GWB		
3B188	ONE BED ROOM	WSF-03	WSF-03	PT4	PT2	PT4	PT2	ACT		
3B188A	BATHROOM	WSF-01	WSF-01	SOLIDSURFACE/PT8	SOLIDSURFACE/PT8	SOLIDSURFACE/PT8	SOLIDSURFACE/PT8	GWB	SOLID SURFACE WALL PANELS 4'-0" AFF TYPICAL, 7'-0" AFF AT SHOWER FRONT AND SIDE WALLS	
3B189	ONE BED ROOM	WSF-03	WSF-03	PT2	PT4	PT2	PT4	ACT		
3B189A	BATHROOM	WSF-01	WSF-01	SOLIDSURFACE/PT8	SOLIDSURFACE/PT8	SOLIDSURFACE/PT8	SOLIDSURFACE/PT8	GWB	SOLID SURFACE WALL PANELS 4'-0" AFF TYPICAL, 7'-0" AFF AT SHOWER FRONT AND SIDE WALLS	
3B190	ONE BED ROOM	WSF-03	WSF-03	PT4	PT2	PT4	PT2	ACT		
3B190A	BATHROOM	WSF-01	WSF-01	SOLIDSURFACE/PT8	SOLIDSURFACE/PT8	SOLIDSURFACE/PT8	SOLIDSURFACE/PT8	GWB	SOLID SURFACE WALL PANELS 4'-0" AFF TYPICAL, 7'-0" AFF AT SHOWER FRONT AND SIDE WALLS	
3B191	ONE BED ROOM	WSF-03	WSF-03	PT2	PT4	PT2	PT4	ACT		
3B191A	BATHROOM	WSF-01	WSF-01	SOLIDSURFACE/PT8	SOLIDSURFACE/PT8	SOLIDSURFACE/PT8	SOLIDSURFACE/PT8	GWB	SOLID SURFACE WALL PANELS 4'-0" AFF TYPICAL, 7'-0" AFF AT SHOWER FRONT AND SIDE WALLS	
3B192	SOILED UTILITY ROOM	WSF-02	WSF-02	PT1	PT1	PT1	PT1	GWB		
3B193	ONE BED ROOM	WSF-03	WSF-03	PT4	PT2	PT4	PT2	ACT		
3B193A	BATHROOM	WSF-01	WSF-01	SOLIDSURFACE/PT8	SOLIDSURFACE/PT8	SOLIDSURFACE/PT8	SOLIDSURFACE/PT8	GWB	SOLID SURFACE WALL PANELS 4'-0" AFF TYPICAL, 7'-0" AFF AT SHOWER FRONT AND SIDE WALLS	
3B194	ISOLATION/SPECIAL NEEDS ROOM	WSF-03	WSF-03	PT2	PT4	PT2	PT4	GWB		
3B194A	BATHROOM	WSF-01	WSF-01	SOLIDSURFACE/PT8	SOLIDSURFACE/PT8	SOLIDSURFACE/PT8	SOLIDSURFACE/PT8	GWB	SOLID SURFACE WALL PANELS 4'-0" AFF TYPICAL, 7'-0" AFF AT SHOWER FRONT AND SIDE WALLS	
3B194B	ANTEROOM	WSF-03	WSF-03	PT1	PT1	PT1	PT1	GWB		
3B195	BATHING	WSF-01	WSF-01	SOLIDSURFACE/PT8	SOLIDSURFACE/PT8	SOLIDSURFACE/PT8	SOLIDSURFACE/PT8	GWB	SOLID SURFACE WALL PANELS 4'-0" AFF TYPICAL	
3B196	EQUIP. STOR.	WSF-02	WSF-02	PT1	PT1	PT1	PT1	ACT		
3B197	CLEAN LINEN ROOM	WSF-02	WSF-02	PT1	PT1	PT1	PT1	GWB		
3B198	CLOTHING STORAGE	WSF-02	WSF-02	PT1	PT1	PT1	PT1	ACT		
C3-1	ELEVATOR LOBBY	LVT1/LVT2/LVT3/LVT4/LVT5/LVT6	RB2	PT1	PT1	PT1	PT1	PT1	ACT	
C3-2	CORRIDOR	LVT1	RB2	PT1	PT3	PT1	PT1	ACT		
C3-10	CORRIDOR	LVT1/LVT5	RB2	PT1	PT1	PT1	PT1	ACT		
C3-11	SERVICE ELEVATOR LOBBY	ETR	ETR	ETR	ETR	ETR	ETR	ETR		
C3-13	CORRIDOR	WSF-02	RB2	PT1	PT1	PT1	PT1	ACT	WC ABOVE THE HANDRAIL & P1 ON TOP OF IT	
C3-17	Room	ETR	ETR	ETR	ETR	ETR	ETR	ETR		
C3-18	CORRIDOR	WSF-04	RB2	PT1	PT1	PT1	PT1	ACT		
C3-19	CORRIDOR	WSF-02	RB2	PT1	PT4	PT1	PT2WC2	ACT	WC ABOVE THE HANDRAIL & P1 ON TOP OF IT	
C3-20	CORRIDOR	LVT1	RB2	PT1	PT1	PT1	PT1	ACT		
C3-21	CORRIDOR	LVT1	RB2	PT1	PT1	PT1	PT1	ACT		
C3-22	VISITOR'S LOUNGE	CPT	RB1	PT3	PT1	PT1	PT1	ACT	EXISTING CARPET TO REMAIN, INSTALL NEW CARPET TO MATCH IN EXPANDED LOUNGE AREA; PAINT NEW WALLS ONLY TO MATCH EXISTING ROOM COLOR	

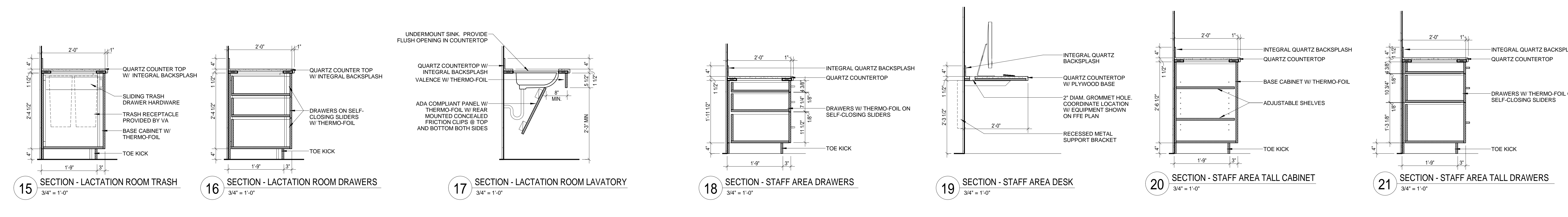
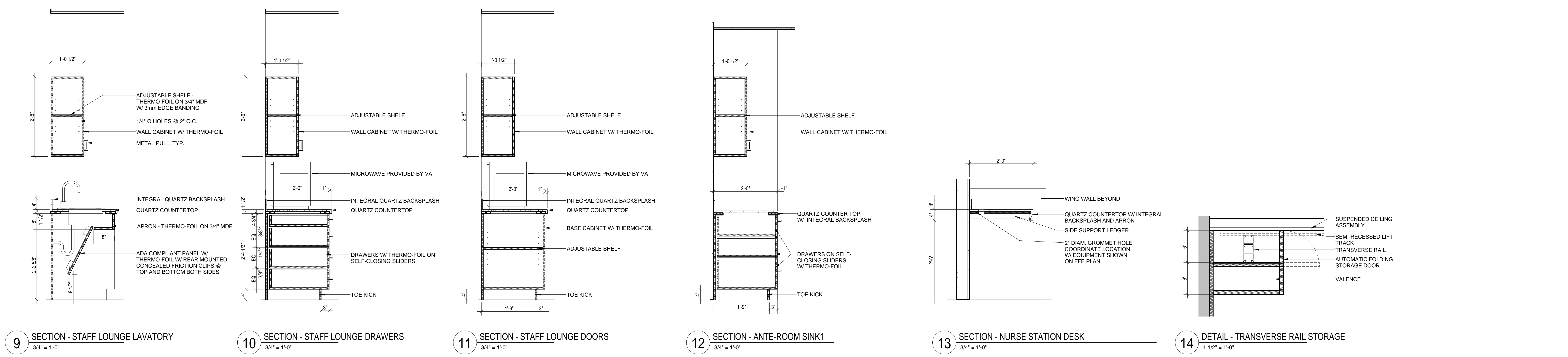
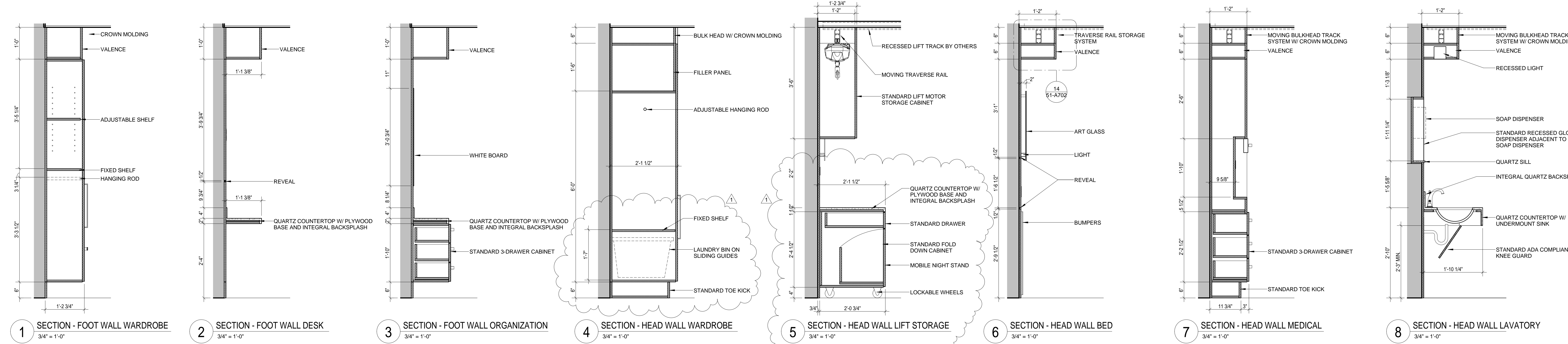
GENERAL NOTE
FOR ALL UNMARKED CLOSETS ON UNIT 3B, PLEASE PROVIDE WSF-02 ON FLOORS, RB1 FOR BASE, PT1 ON ALL WALLS, AND GWB FOR CEILING.

CONSULTANTS:	
AECOM 3101 WILSON BOULEVARD, SUITE 900 ARLINGTON, VA 22201 PH: 703.682.4900 FAX: 703.682.4901 www.aecom.com	
ADDENDUM #1	5/29/2013
Revisions:	Date

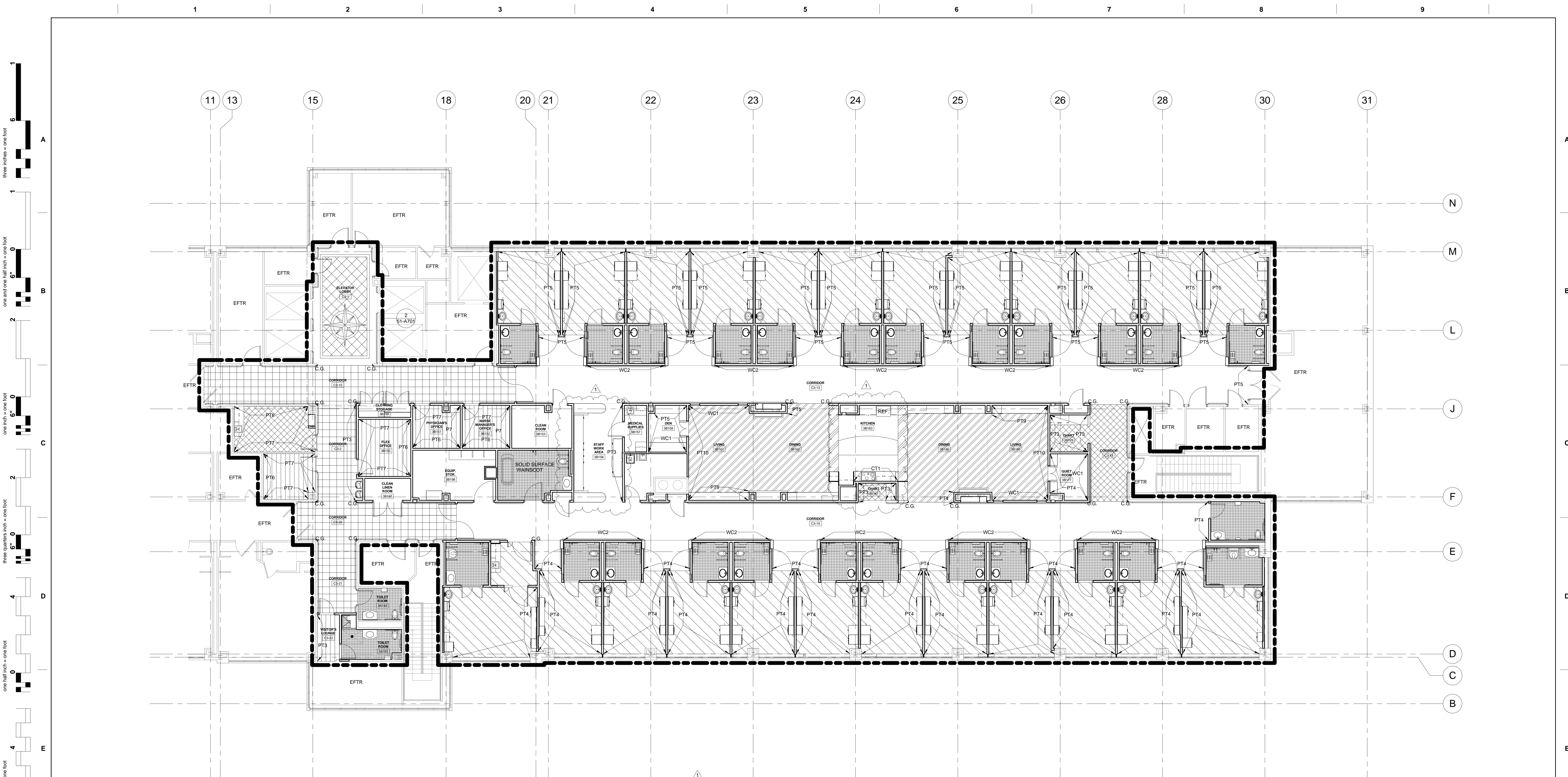
ARCHITECTS/ENGINEERS:	
A E works 6587 HAMILTON AVENUE PITTSBURGH, PENNSYLVANIA 15206 PH: 412.287.7353 FAX: 412.287.7354 www.ae-works.com	

Approved: Director, VA Pittsburgh Healthcare System	Drawing Title

three inches = one foot
 one and one half inch = one foot
 one inch = one foot
 three quarters inch = one foot
 one half inch = one foot
 three eighths inch = one foot
 one quarter inch = one foot
 one eighth inch = one foot

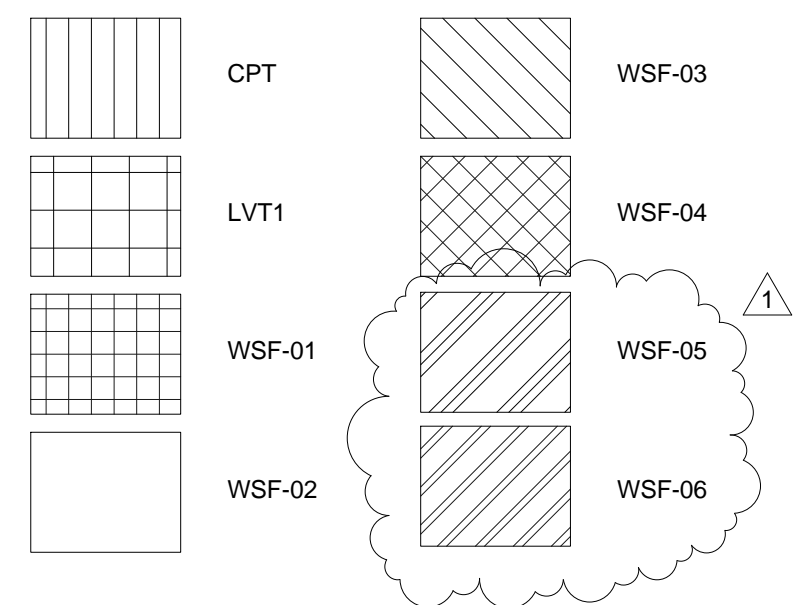


CONSULTANTS: AECOM 3101 WILSON BOULEVARD, SUITE 900 ARLINGTON, VA 22201 PH: 703.682.4900 FAX: 703.682.4901 www.aecom.com		ARCHITECTS/ENGINEERS: A E works 6587 HAMILTON AVENUE PITTSBURGH, PENNSYLVANIA 15206 PH: 412.287.7353 FAX: 412.287.7354 www.ae-works.com		Approved: Director, VA Pittsburgh Healthcare System Approved: Chief Operating Officer Approved: Vice President, Facilities Management Approved: Manager, Projects Section		Drawing Title CASEWORK DETAILS Approved: Site Manager Approved: Project Manager		Project Title HZ RENOVATE B51 (UNIT 3B) Location 1010 Delafield Road, Pittsburgh, PA 15215 Date 11/09/2012		Project Number 646-09-130 Building Number #51 Drawing Number 51-A702 Dwg. 21 of 91		Office of Construction and Facilities Management Department of Veterans Affairs	
ADDENDUM #1 Revisions:		5/29/2013 Date											



1 THIRD FLOOR FINISH FLOOR PLAN
1/8" = 1'-0"

- GENERAL FINISHES NOTES:**
1. ALL WALLS TO BE PAINTED PT1 UNLESS NOTED OTHERWISE. ALL RESIDENT ROOM WALLS TO BE PT2 UNLESS NOTED OTHERWISE. SEE DRAWINGS FOR ACCENT WALLS.
 2. ALL SOLID SURFACE, INCLUDING RESIDENT SINKS, WILL BE CAMBRIA QUARTZ.
COMMON AREA = HYDE PARK 2150
RESIDENT ROOMS = BRADFORD 3120
STAFF AREA = HYDE PARK 2150
 3. FLOORING TO BE SHEET WELDED VINYL UNLESS NOTED OTHERWISE.
 4. (4) 24" x 36" MOUNTED MAGNETIC MARKERGLASS. ONE IN EACH OFFICE.
 5. WC2 = SHERWIN WILLIAMS WALLCOVERING APPROX 894J. THIS PRODUCT WILL BE INSTALLED ABOVE HANDRAIL AND WILL RECEIVE A PAINTED FINISH OF PT10. WALL BELOW WOOD RAIL MOUNT TO BE PAINTED PT3.
 6. RESIDENT BATHROOM WALLS AND BATHING ROOM WALLS TO BE HIGH END INPRO CORPORATION SOLID SURFACE. ALL GWB WALLS IN BATHROOM TO BE PT8.
 7. C.G. = CORNER GUARD. CORNER GUARDS ARE CORNER TRIM, FRY REGLET #DMC1-1250 OR APPROVED EQUAL WITH A 6" TAPE AND JOINT COMPOUND. TO BE PAINTED THE SAME AS ADJACENT WALL.
 8. EFTR = EXISTING FLOOR TO REMAIN.
 9. WC1 TO BE ACOUSTICAL WRAPPED PANELS ON 2" CLIPS. SEE MANUFACTURER'S SPECIFICATIONS FOR INSTALLATION DETAILS.



NORTH
FULLY SPRINKLERED
BID DOCUMENTS

CONSULTANTS: AECOM 3101 WILSON BOULEVARD, SUITE 900 ARLINGTON, VA 22201 PH: 703.682.4900 FAX: 703.682.4901 www.aecom.com		ARCHITECTS/ENGINEERS: A E works 6587 HAMILTON AVENUE PITTSBURGH, PENNSYLVANIA 15206 PH: 412.287.7333 FAX: 412.287.7334 www.ae-works.com		Approved: Director, VA Pittsburgh Healthcare System Approved: Chief Operating Officer Approved: Vice President, Facilities Management Approved: Manager, Projects Section		Drawing Title THIRD FLOOR (UNIT 3B) FINISH FLOOR PLAN		Project Title HZ RENOVATE B51 (UNIT 3B)		Project Number 646-09-130 Building Number #51 Drawing Number 51-A803 Dwg. 23 of 91		Office of Construction and Facilities Management Department of Veterans Affairs	
ADDENDUM #1 Revisions:						Approved: Site Manager Approved: Project Manager		Location 1010 Delafield Road, Pittsburgh, PA 15215 Date 11/09/2012		Checked JD		Drawn JD	