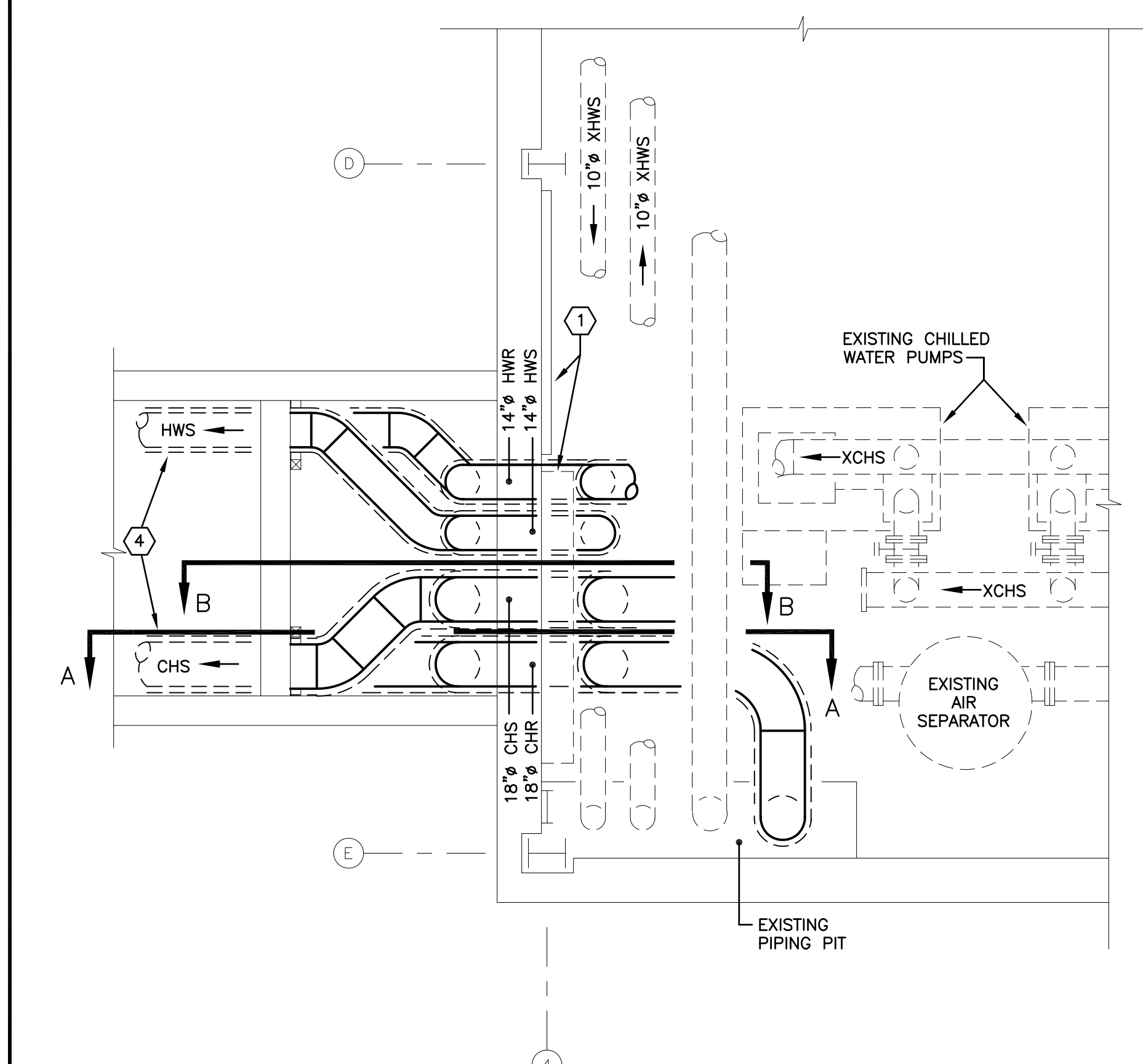
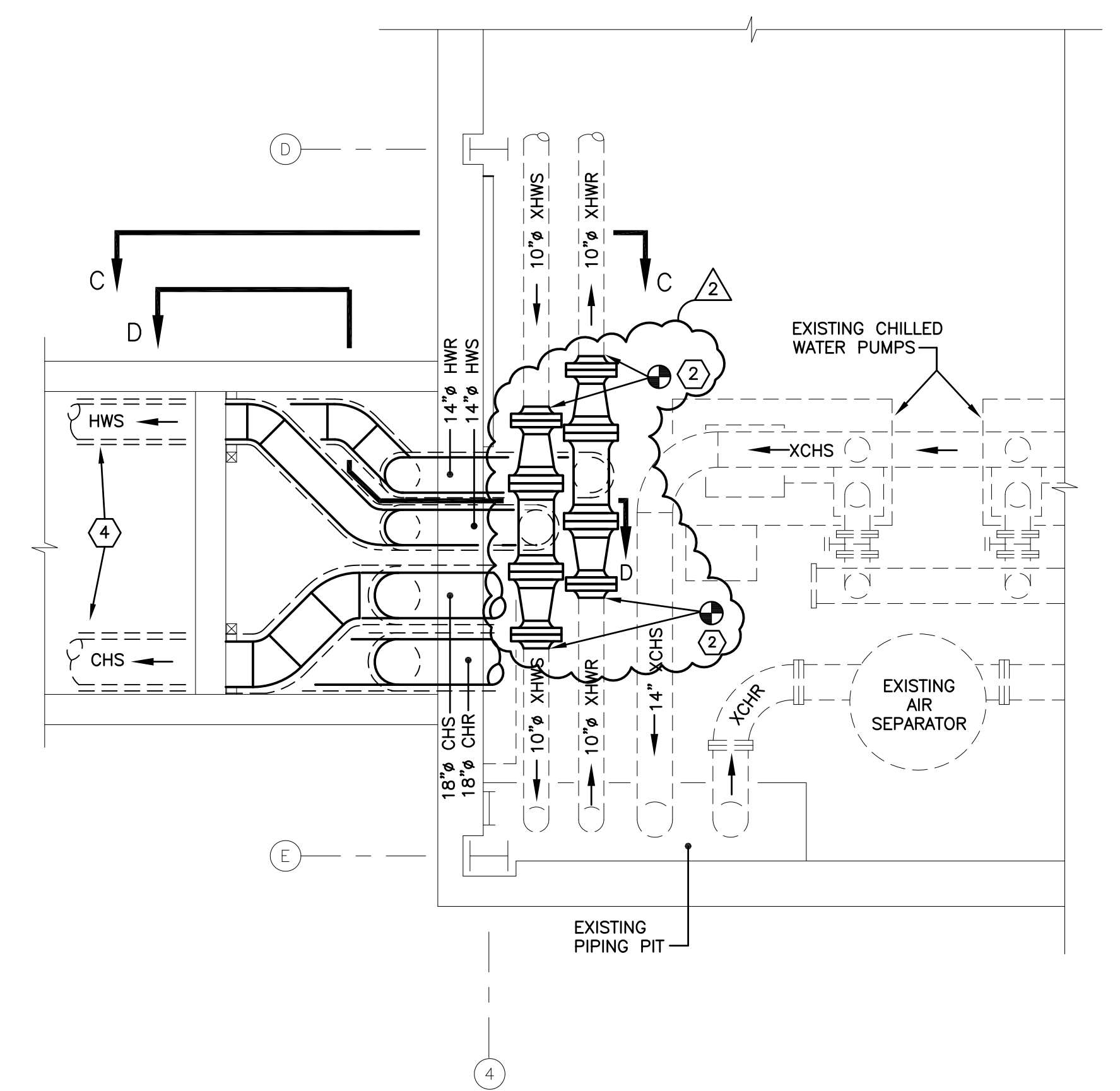


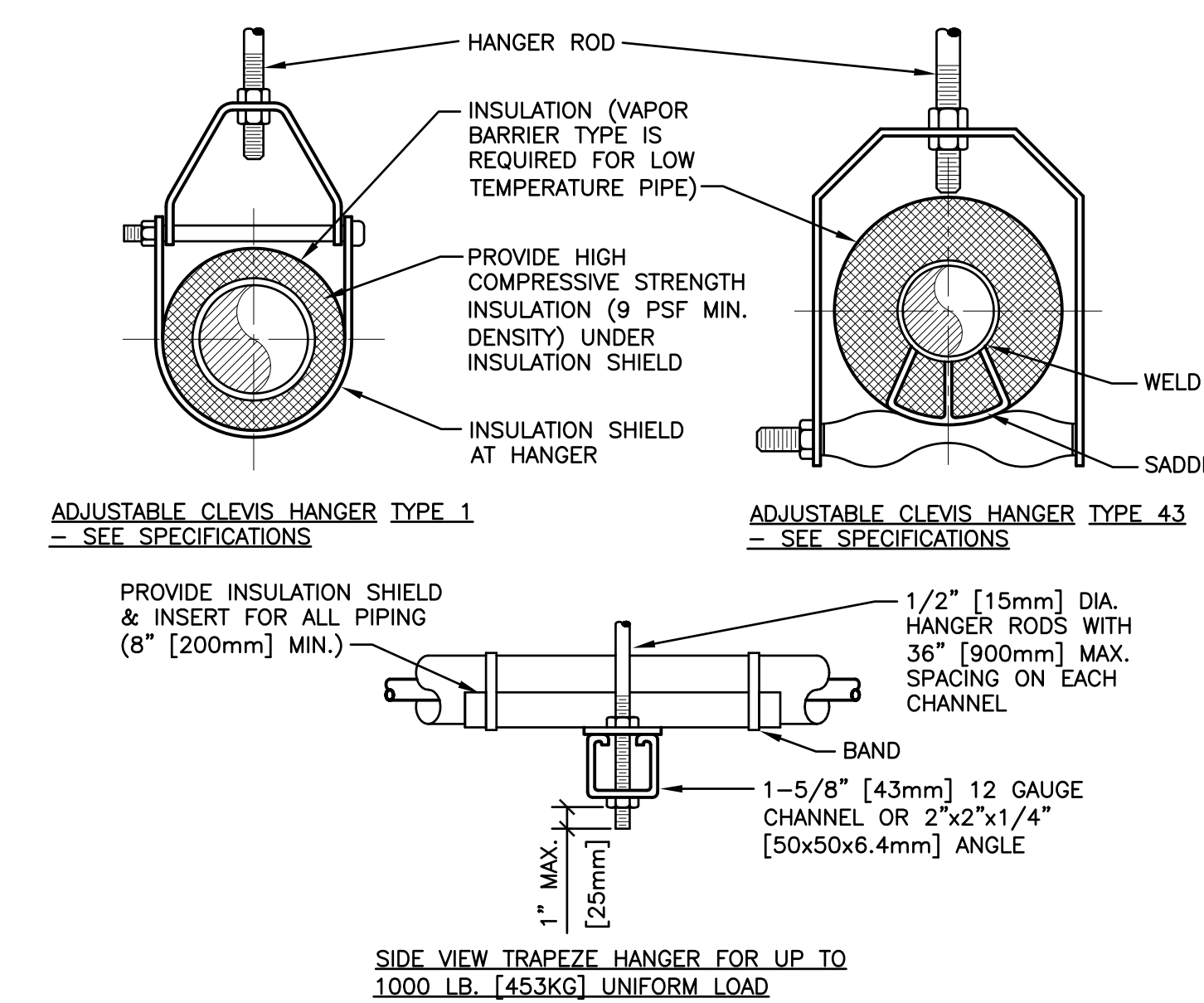
three inches = one foot
one and one half inches = one foot
one inch = one foot
three quarters inch = one foot
one half inch = one foot
three eighths inch = one foot
one quarter inch = one foot
one eighth inch = one foot



PARTIAL CHILLED WATER PIPING PLAN
SCALE: 1/4" = 1'-0"



PARTIAL HOT WATER PIPING PLAN
SCALE: 1/4" = 1'-0"

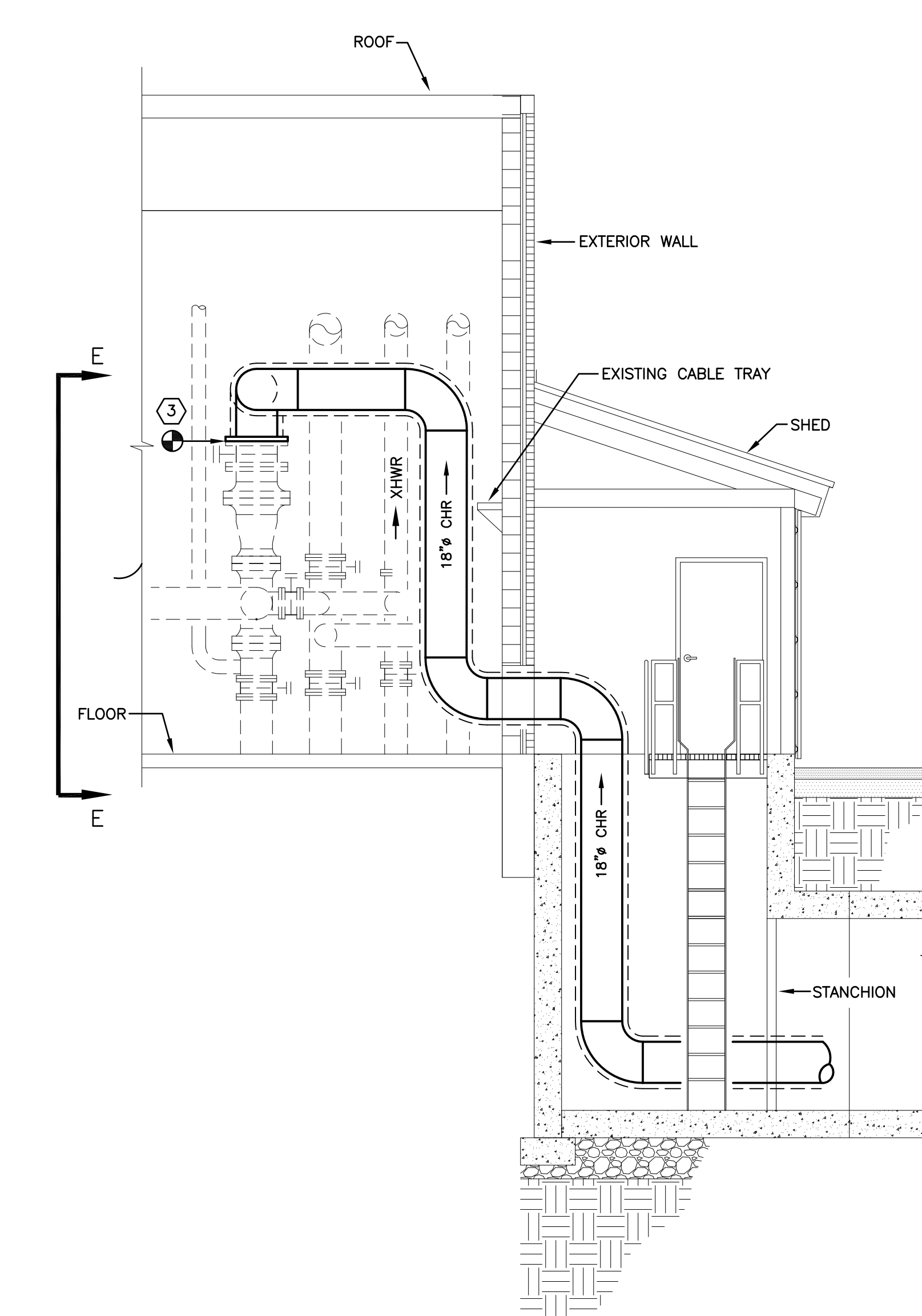


MAXIMUM PIPE/TUBING SUPPORT SPACING																			
NOM. SIZE	IN.	THRU 3/4	1	1-1/4	1-1/2	2	2-1/2	3	4	5	6	8	10	12	14	16	18		
PIPE	FT.	7	7	9	10	11	12	14	16	17	19	22	23	25	27	28			
TUBING	FT.	5	6	7	8	8	9	10	12	13	14	16	-	-	-	-	-		

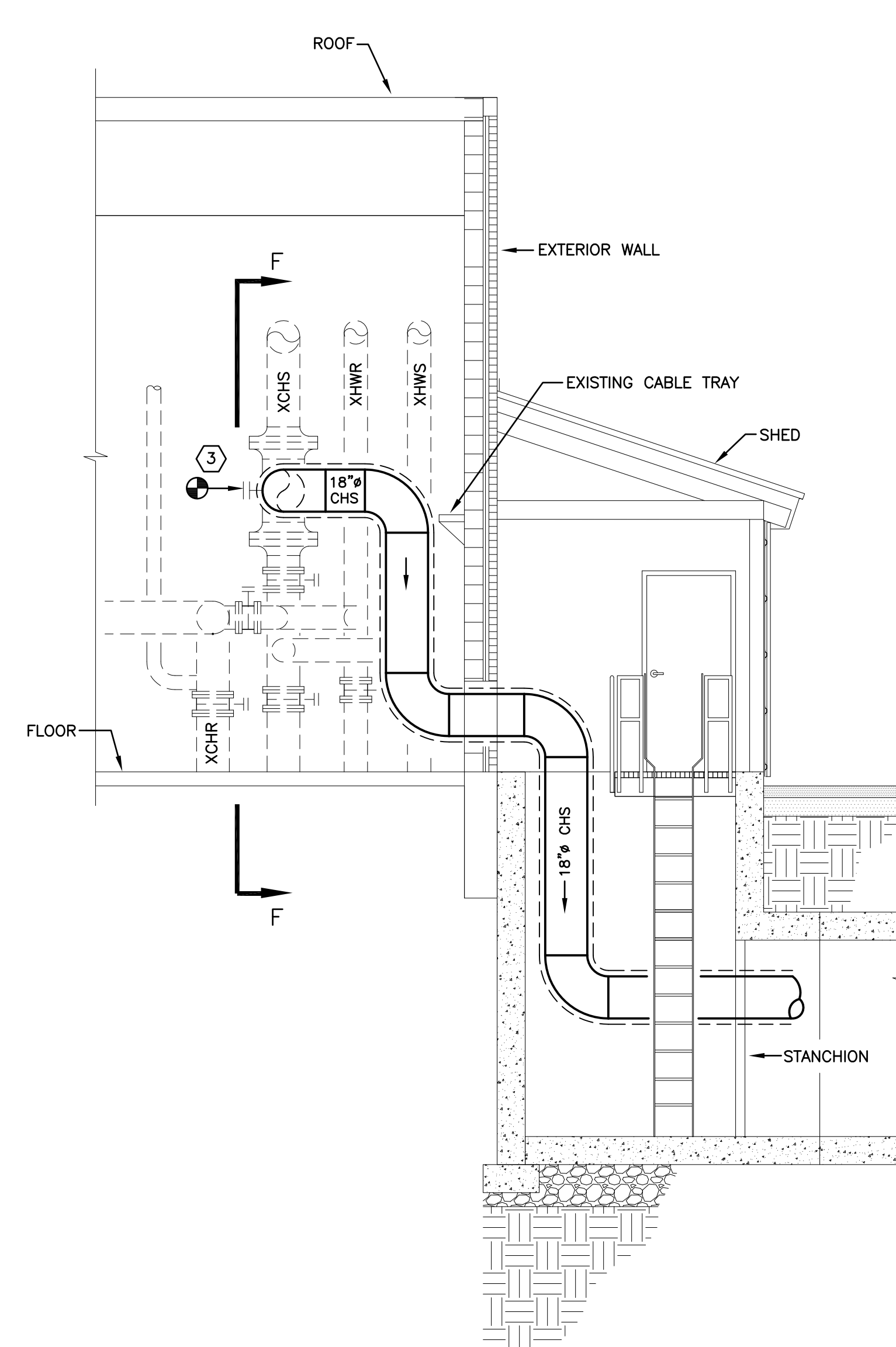
NOTE: FOR TRAPEZE HANGER TAKE SPACING OF SMALLEST SIZE ON TRAPEZE.

PIPE HANGER DETAIL
NO SCALE

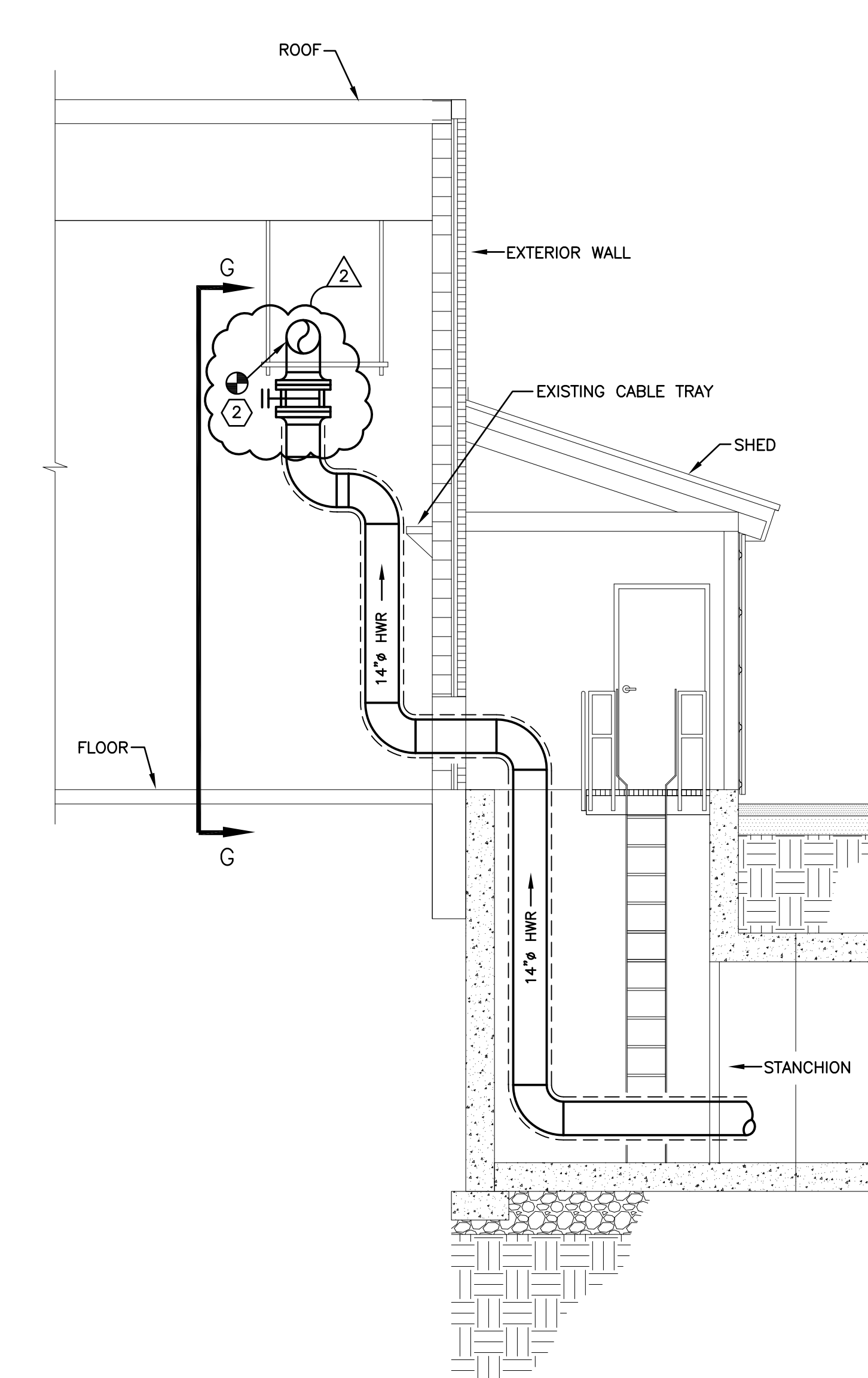
- GENERAL NOTES:
- FIELD VERIFY ALL PIPING LOCATIONS AND ARRANGEMENTS PRIOR TO PIPING FABRICATION.
 - COORDINATE ALL NEW PIPING CONNECTIONS WITH FACILITY PERSONNEL.
- KEYED NOTES:
- EXISTING TELECOM EQUIPMENT AND CABLE TRAY. COORDINATE LOCATION OF PIPING WITH EXISTING EQUIPMENT ON WALL.
 - CONNECT NEW 14" HWS & HWR TO EXISTING 10" HOT WATER PIPING AT LOCATION SHOWN. PROVIDE SHUTOFF VALVE AND EXTEND PIPING AS INDICATED.
 - CONNECT NEW 18" HWS & HWR TO EXISTING PIPING TEE AT EXISTING SHUTOFF VALVE.
 - SEE MECHANICAL SITE PLAN FOR CONTINUATION.



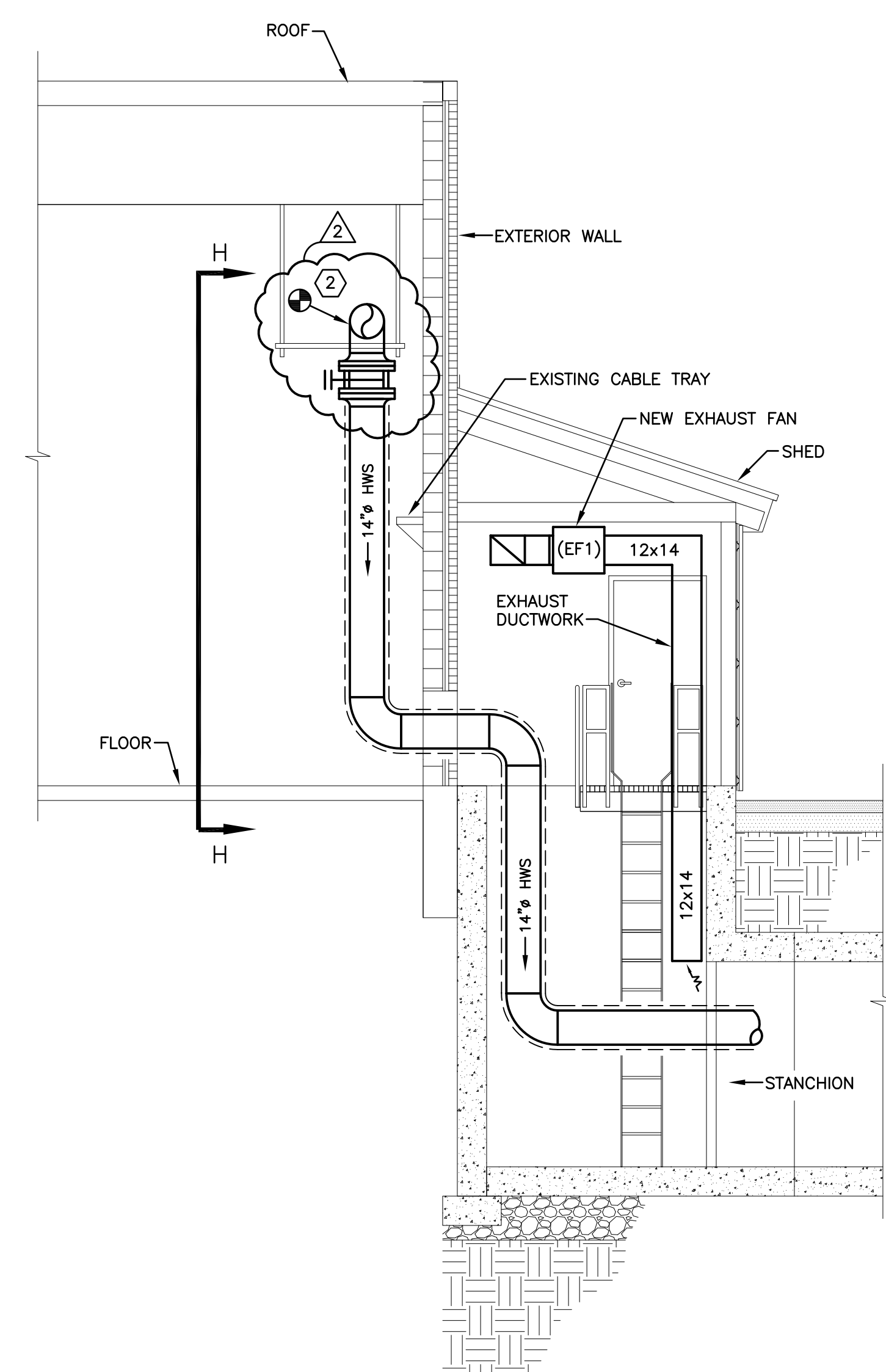
SECTION A-A
SCALE: 1/4" = 1'-0"



SECTION B-B
SCALE: 1/4" = 1'-0"



SECTION C-C
SCALE: 1/4" = 1'-0"



SECTION D-D
SCALE: 1/4" = 1'-0"

FINAL DESIGN (100%)
FFA #7482

CONSULTANTS: FRIEDMAN FISHER ASSOCIATES, P.C. CONSULTING ENGINEERS 22 AVENUE ROAD, ALBANY, NEW YORK 12206 TEL (518) 458-7040 FAX (518) 458-7043 info@friedmanfisher.com EBERLIN AND EBERLIN, P.C. 347 ROUTE 100 SUITE 300 SENECA NEW YORK 10959 CONSULTING ENGINEERS, PLANNERS, LANDSCAPE ARCHITECTS WATERWAY PHONE WATERWAY FAX		ARCHITECT/ENGINEERS: Hyman Hayes ASSOCIATES 6 WEMBLEY COURT, ALBANY, NEW YORK 12205 (518) 452-3470 HHA Proj. 11029		Drawing Title MECHANICAL SECTIONS NO.1 Approved Project Director		Project Title REPAIR HOT WATER LINES PHASE II Stratton VA Medical Center Location Albany, New York Date JULY 24, 2012 Checked BJF Drawn PBL		Project Number VA 528A8-10-814 Building Number - Drawing Number M2.1 Dwg. 20 of 23		Office of Construction and Facilities Management 	
--	--	--	--	---	--	---	--	---	--	---	--