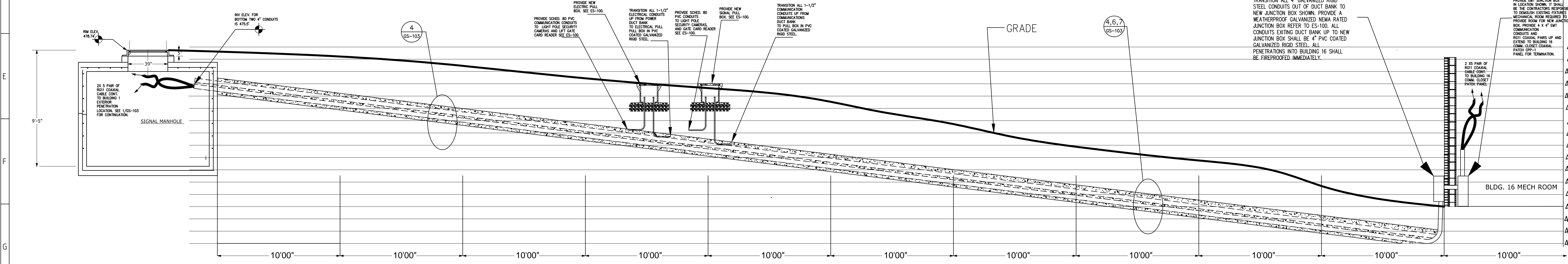
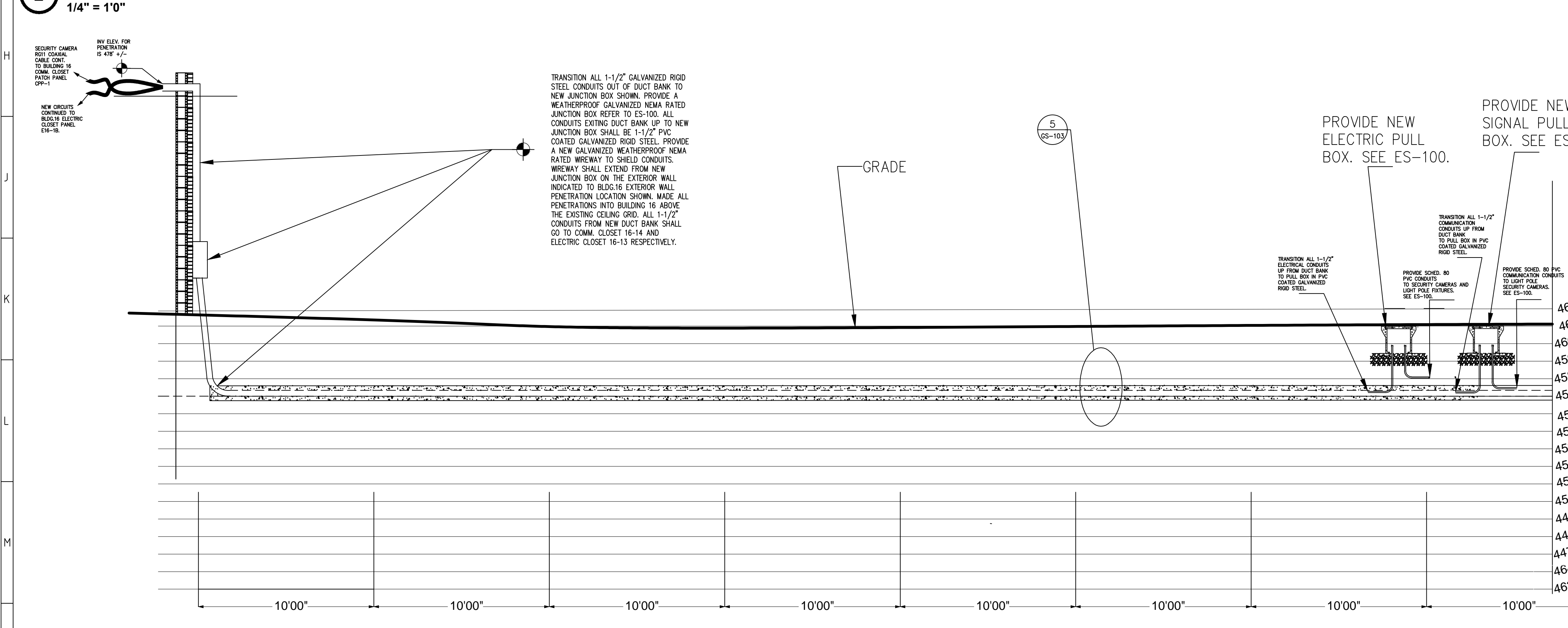


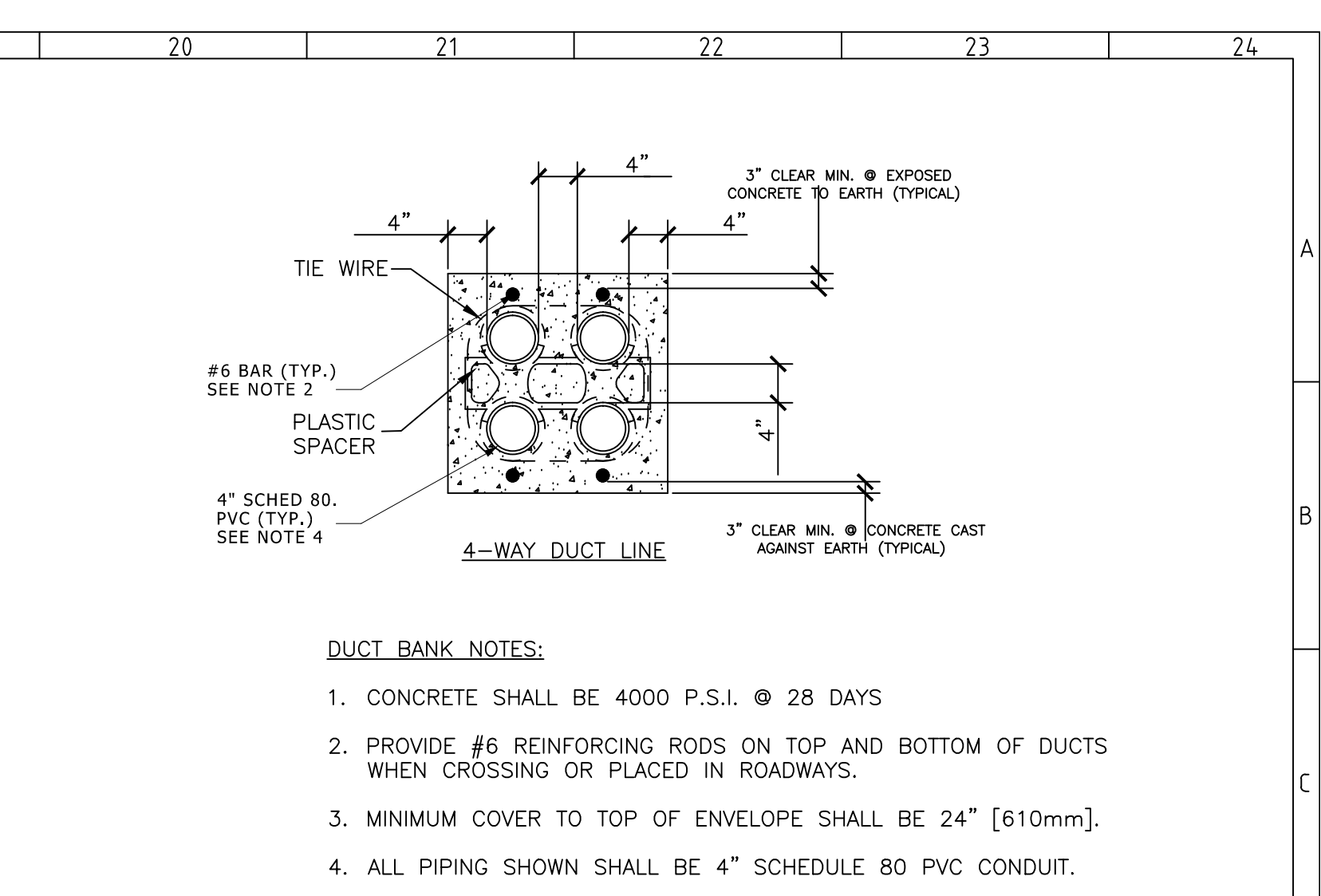
1 TRENCH 1 SECTION - SECURITY CAMERA COAXIAL CONNECTIONS
1/4" = 10'



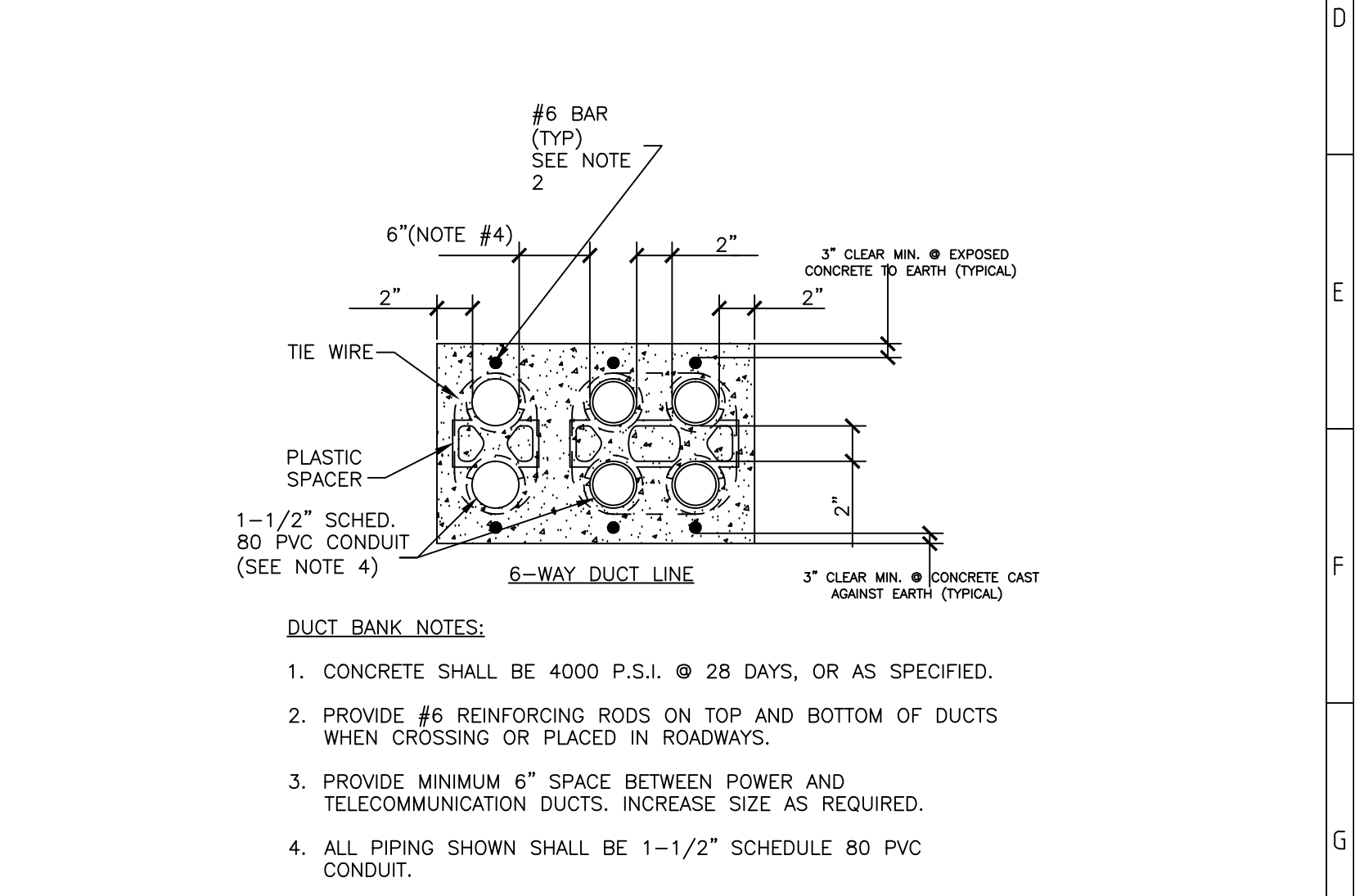
2 TRENCH 2 SECTION - SECURITY CAMERA COAXIAL CONNECTIONS, GATE ACCESS SYSTEM FEEDERS
1/4" = 10'



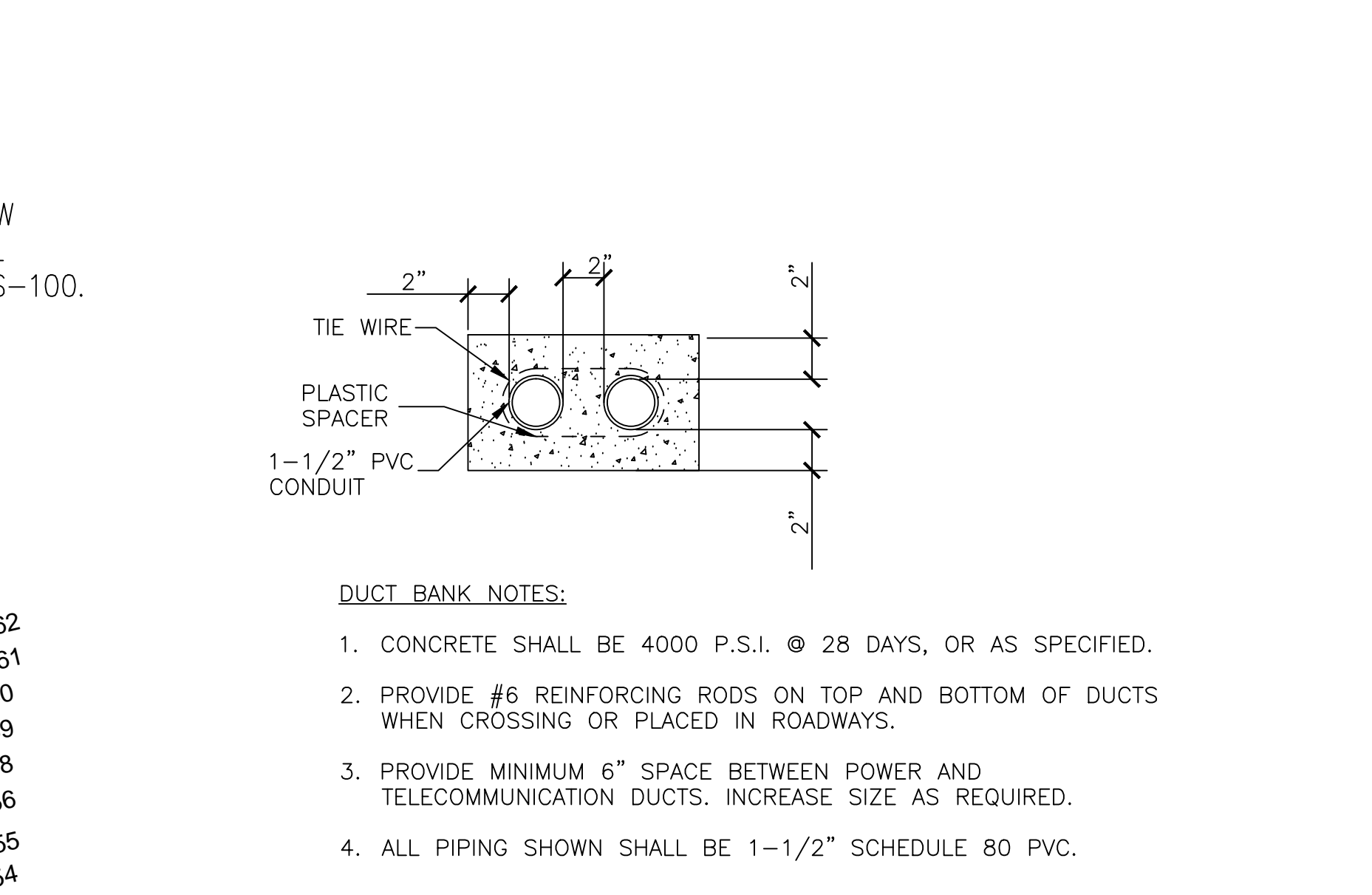
3 TRENCH 4 SECTION - SECURITY CAMERAS 4 AND 5, AND PARKING LIGHT LIGHTING POWER AND COMMUNICATION DUCTS
1/4" = 10'



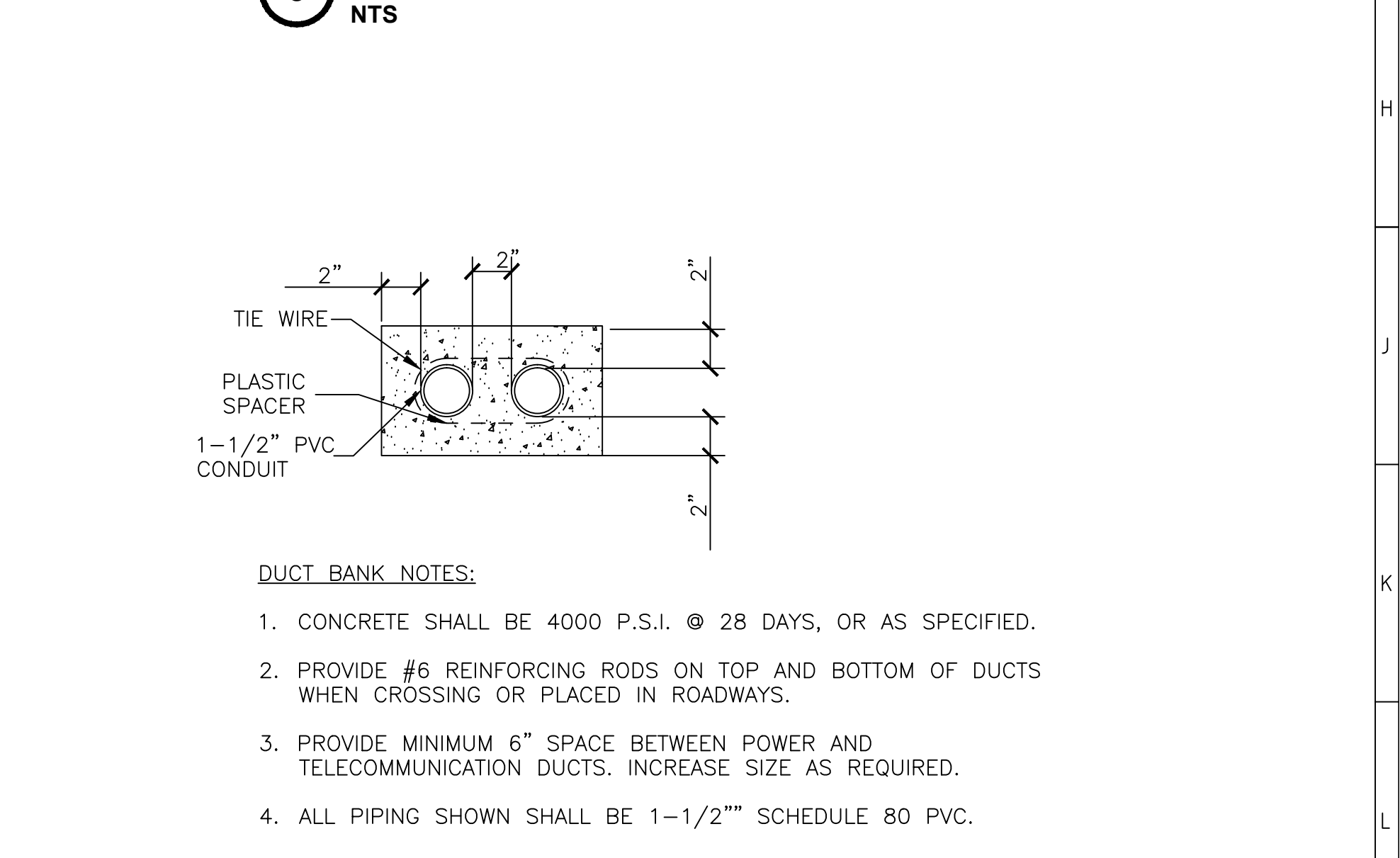
4 COMM. DUCTBANK DETAIL (TYPE 1)
NTS



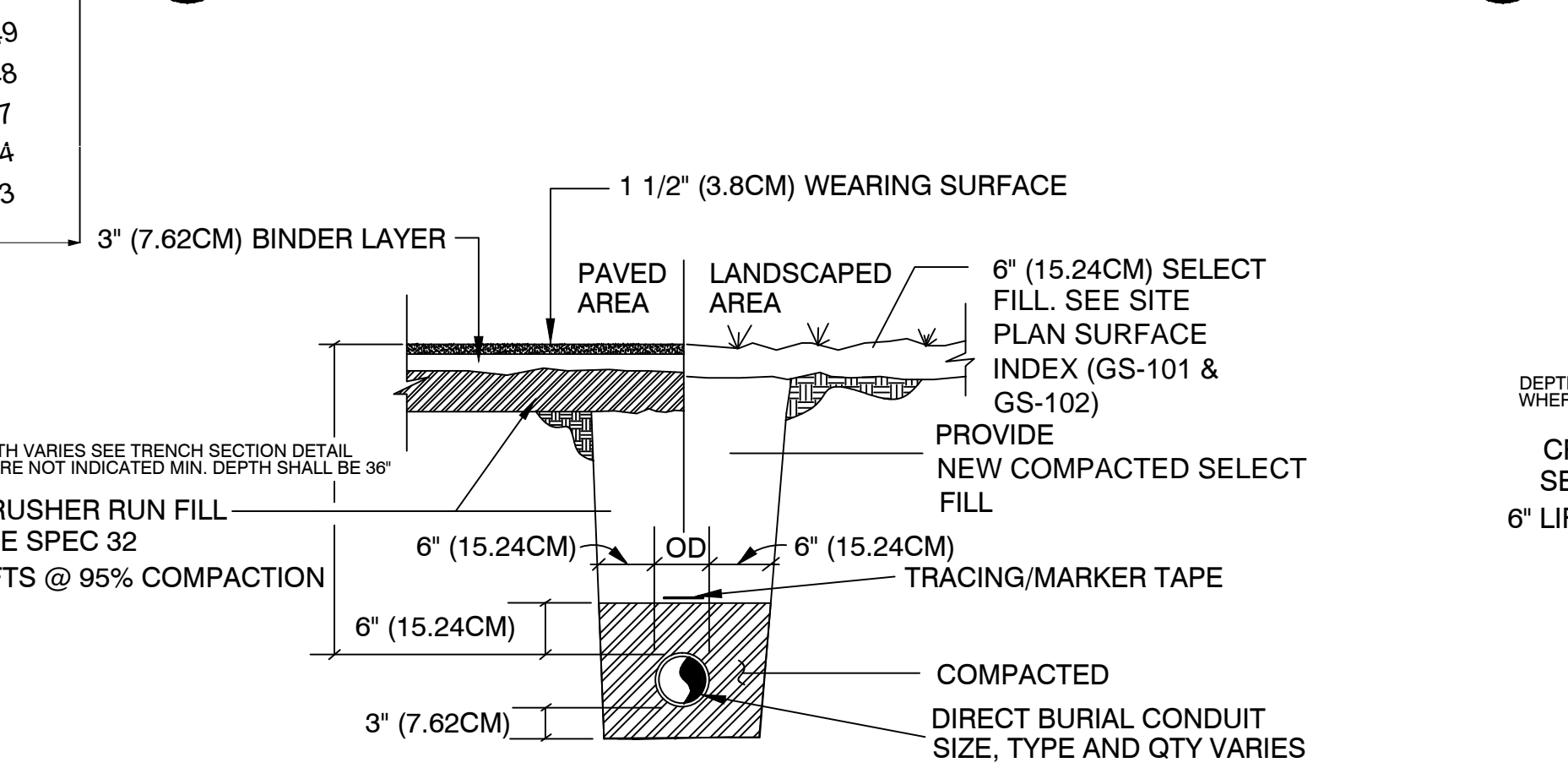
5 POWER AND COMM. DUCT BANK DETAIL (TYPE 1)
NTS



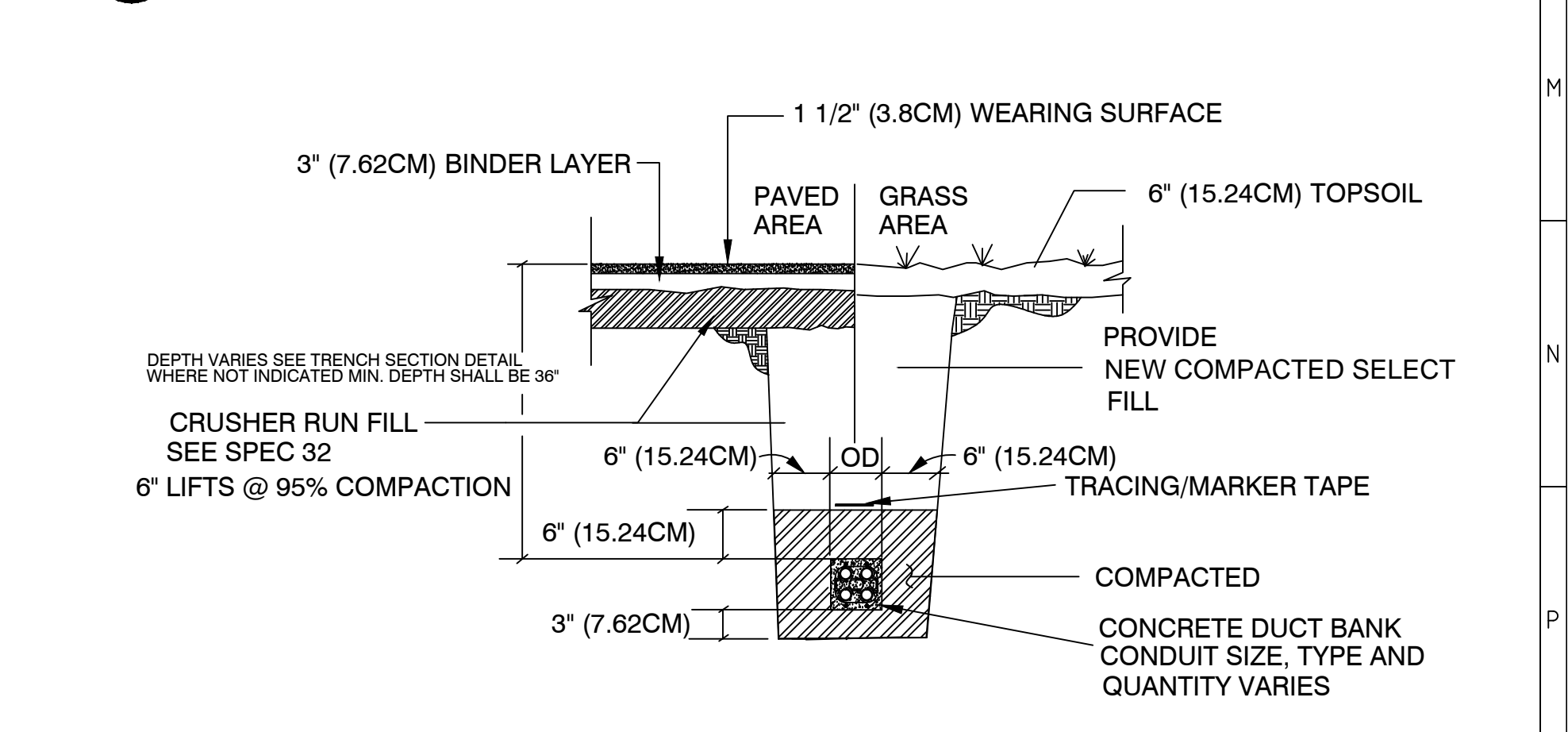
6 POWER DUCT BANK DETAIL (TYPE 1)
NTS



7 COMM. DUCT BANK DETAIL (TYPE 2)
NTS



8 TYPICAL DIRECT BURIAL UTILITY TRENCH BACKFILL DETAIL
1/8"=1'-0"



9 TYPICAL DUCT BANK TRENCH BACKFILL DETAIL
1/8"=1'-0"

<div>Revisions</div>				<div>Date</div>				<div>(Company Logo/Information Block)</div>				<div>Drawing Title TRENCH SECTIONS AND BACKFILL DETAILS</div>				<div>Project Title UPGRADE FOR BUILDING 16 SITEWORK</div>				<div>Date 07/02/2013</div>											
												<div>Approved: Facility Manager</div>				<div>Building Number 16</div>				<div>Checked CF</div>				<div>Drawn AZH</div>				<div>Project No. 528A7-13-715</div>			
																<div>Location VAMC SYRACUSE, NY</div>				<div>Dwg. 6 of 11</div>				<div>GS-103</div>							
																								<div>DEPT. OF VETERANS AFFAIRS</div>							