

three inches = one foot  
one and one half inches = one foot  
one inch = one foot  
three quarters inch = one foot  
one half inch = one foot  
three eighths inch = one foot  
one quarter inch = one foot  
one eighth inch = one foot  
one sixteenth inch = one foot

DRAWING NOTES

- COORDINATE THE FINAL LOCATIONS OF PLUMBING LINES AND EQUIPMENT WITH ACTUAL FIELD LOCATIONS OF STRUCTURAL MEMBERS, CONDUIT, ETC. OFFSET OR RELOCATE PLUMBING LINES AS REQUIRED.
- PROVIDE AND SET ALL SLEEVES THROUGH EXTERIOR AND INTERIOR WALLS. COORDINATE WITH ARCHITECTURAL DRAWINGS.
- ROUGH FOR ALL ITEMS OF EQUIPMENT FURNISHED BY OTHERS WHICH REQUIRE WATER, WASTE, VENT PIPING.
- COORDINATE SANITARY AND STORM INVERT ELEVATIONS WITH ACTUAL INVERT TIE-IN POINTS PRIOR TO ANY PIPING INSTALLATION. PIPING 2" AND SMALLER SHALL PITCH 1/4" PER FOOT MIN. PIPING LARGER THAN 2" SHALL PITCH 1/8" PER FOOT MIN. NOTIFY ENGINEER OF ANY CONFLICTS. PIPING MATERIALS AND COMPONENTS SHALL BE IN ACCORDANCE WITH THE SPECIFICATIONS OR AS OTHERWISE APPROVED BY THE LOCAL PLUMBING INSPECTOR.
- THE DRAWINGS ARE DIAGRAMMATIC. EXACT EQUIPMENT LOCATIONS, PIPE AND DUCT ROUTING SHALL BE GOVERNED BY FIELD CONDITIONS. FIELD COORDINATE ALL WORK BEFORE PURCHASING EQUIPMENT AND FABRICATING PIPE. NO EXTRAS SHALL BE PERMITTED FOR RESTOCKING, REFABRICATION OR REMOVAL OF INSTALLED WORK DUE TO LACK OF COORDINATION WITH FIELD CONDITIONS.
- APPLY FOR AND PAY FOR ALL REQUIRED INSPECTIONS, PERMITS, SERVICE APPLICATIONS AND FEES ASSOCIATED WITH PLUMBING WORK OF PROJECT. COORDINATE WITH LOCAL AUTHORITIES AND UTILITIES FOR ADEQUATE TIME PERIODS REQUIRED TO PROCESS APPLICATIONS AND PERMITS AND SCHEDULE INSPECTIONS.



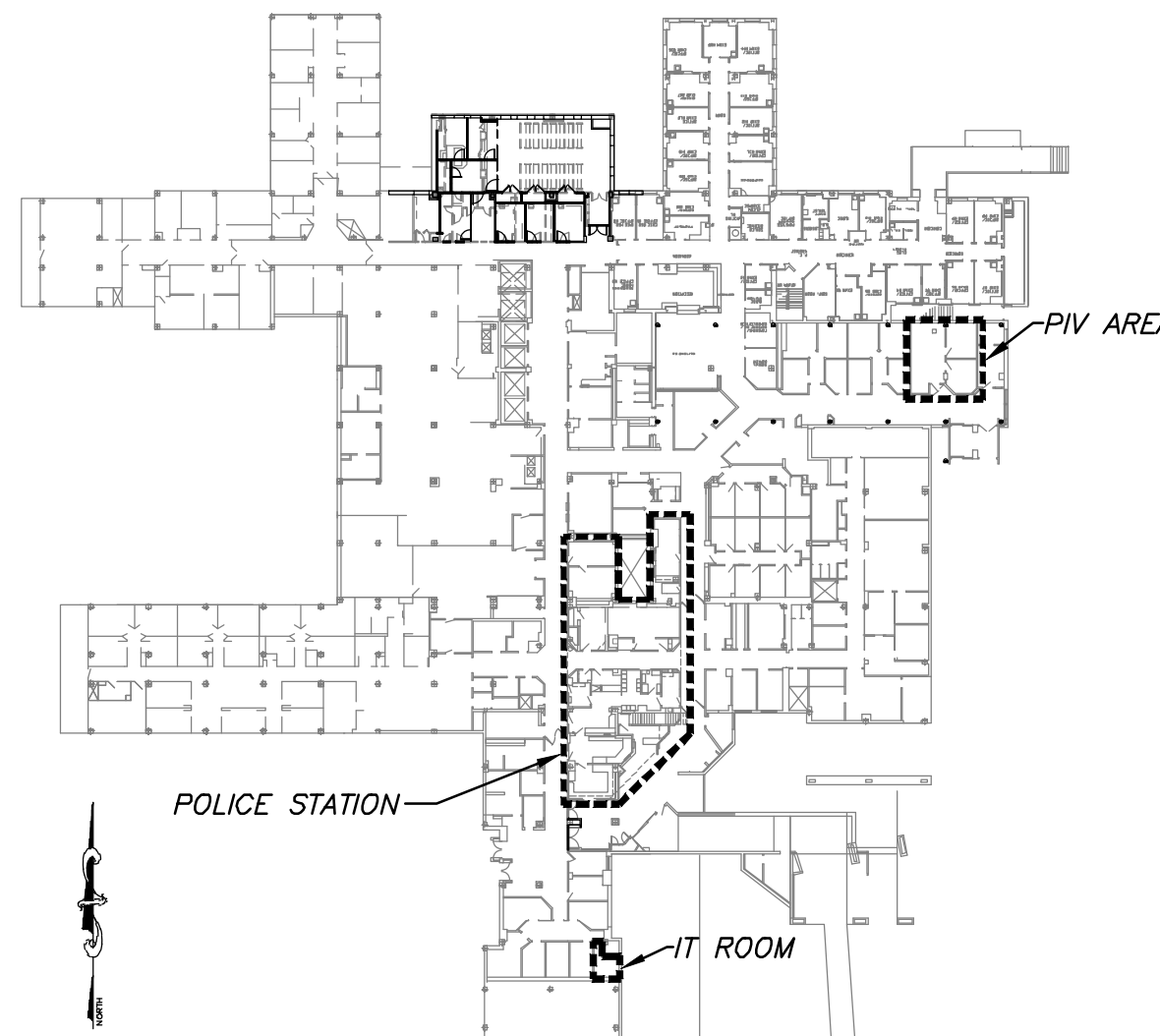
**2** **P1** **GROUND FLOOR PLUMBING PLAN - DRAINAGE**  
SCALE: 1/8" = 1'-0"



**1** **P1** **FIRST FLOOR PLUMBING PLAN - DRAINAGE**  
SCALE: 1/8" = 1'-0"

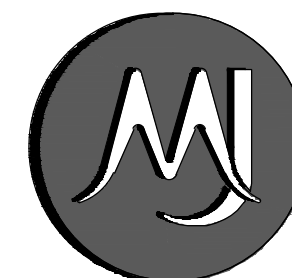
KEYED NOTES FOR DWG P1

- 4" SOIL - UP
- 2" VENT - UP
- 4" WASTE - UP
- 2" WASTE - UP
- 1-1/2" WASTE - UP
- 2" VENT - RISE IN CEILING SPACE
- 2" WASTE - DN
- 1-1/2" VENT - RISE
- COORDINATE W/ARCHITECT TO ENSURE VERTICAL PIPING IS CONCEALED.
- 4" WASTE - DN
- 2" VENT - RISE
- 2" WASTE - DN
- 4" SOIL - DN
- 1-1/2" WASTE - DN
- OFFSET RISER TO FIT IN CONCEALED SPACE AS REQUIRED BY EXIST FIELD LOCATION OF EXISTING RISER.
- PROVIDE 1" IN DRAINAGE CONNECTION WITH BACKWATER VALVE AS REQUIRED BY MANUFACTURER'S INSTRUCTIONS TO COUNTERTOP ICE MACHINE SUPPLIED BY VA.
- 1-1/2" VENT - DN & RISE
- 1-1/2" VENT - RISE IN CEILING SPACE
- 1-1/2" VENT - UP
- 1-1/2" EXISTING VENT TO REMAIN
- CONDENSATE DRAIN FROM FAN COIL UNITS. SEE DETAIL 1/PO.1. COORDINATE WITH DRAWING M1.



KEY PLAN  
NOT TO SCALE

SUB-CONSULTANTS:



**Engineering and  
Land Surveying, P.C.**  
1533 Crescent Road - Clifton Park, NY 12065



UNAUTHORIZED ALTERATION OR ADDITION TO THIS  
DRAWING IS A VIOLATION OF SECTION 2006 SUBSECTION  
2 OF THE NEW YORK STATE EDUCATION LAW

PREPARED BY:

**ΣΨ Sigma Psi Consulting**  
Mechanical, Electrical, Plumbing Engineers, PLLC

4 Collamer Road, Malta, NY 12020 PH (518) 581-9428 FX (518) 580-9325

Drawing Title  
**GROUND AND FIRST FLOOR PLUMBING PLANS -  
DRAINAGE**

Approved Project Director

Project Title  
**SYRACUSE VAMC  
RENOVATE POLICE STATION**

Location  
**SYRACUSE VA MEDICAL CENTER NY**

Date  
**4/19/13**

Checked  
**- PJM**

Drawn  
**- JDM**

Project Number  
**528A7-12-708**

Building Number  
**1**

Drawing Number  
**P1**

Dwg. 20 of 31

Office of  
Construction  
and Facilities  
Management

