



InfraStructure, LLC
ENGINEERING CONSULTING GROUP

PROJECT: CORRECT MAIN ENTRANCE HVAC

JOB NO.: NE128:12P02

SUPPLEMENTAL DRAWING

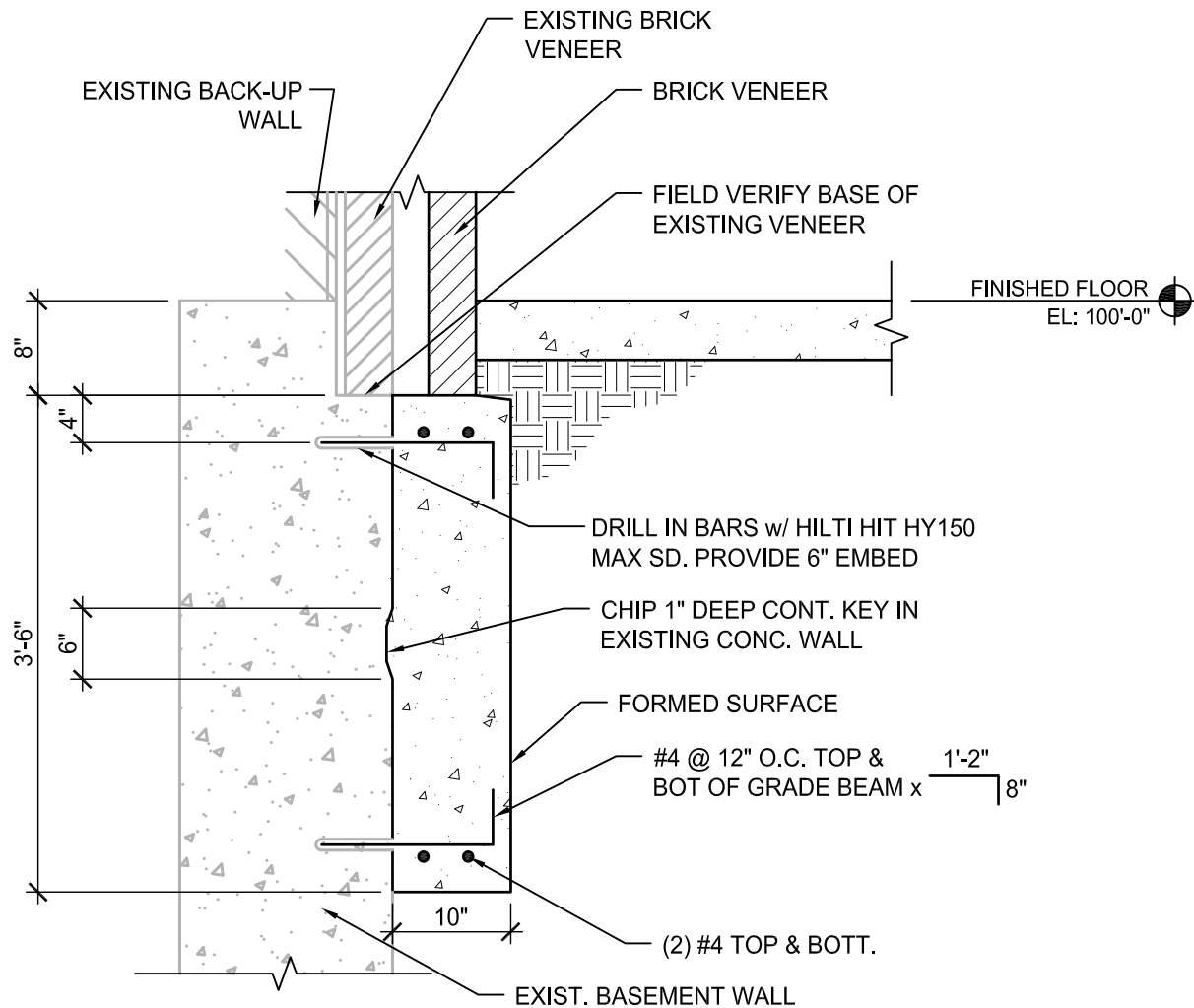
DATE: 7/8/2013

DRAWN: JKZ

ADD. NO.: 2 ATTACH: A

SHEET NO.: S2.1

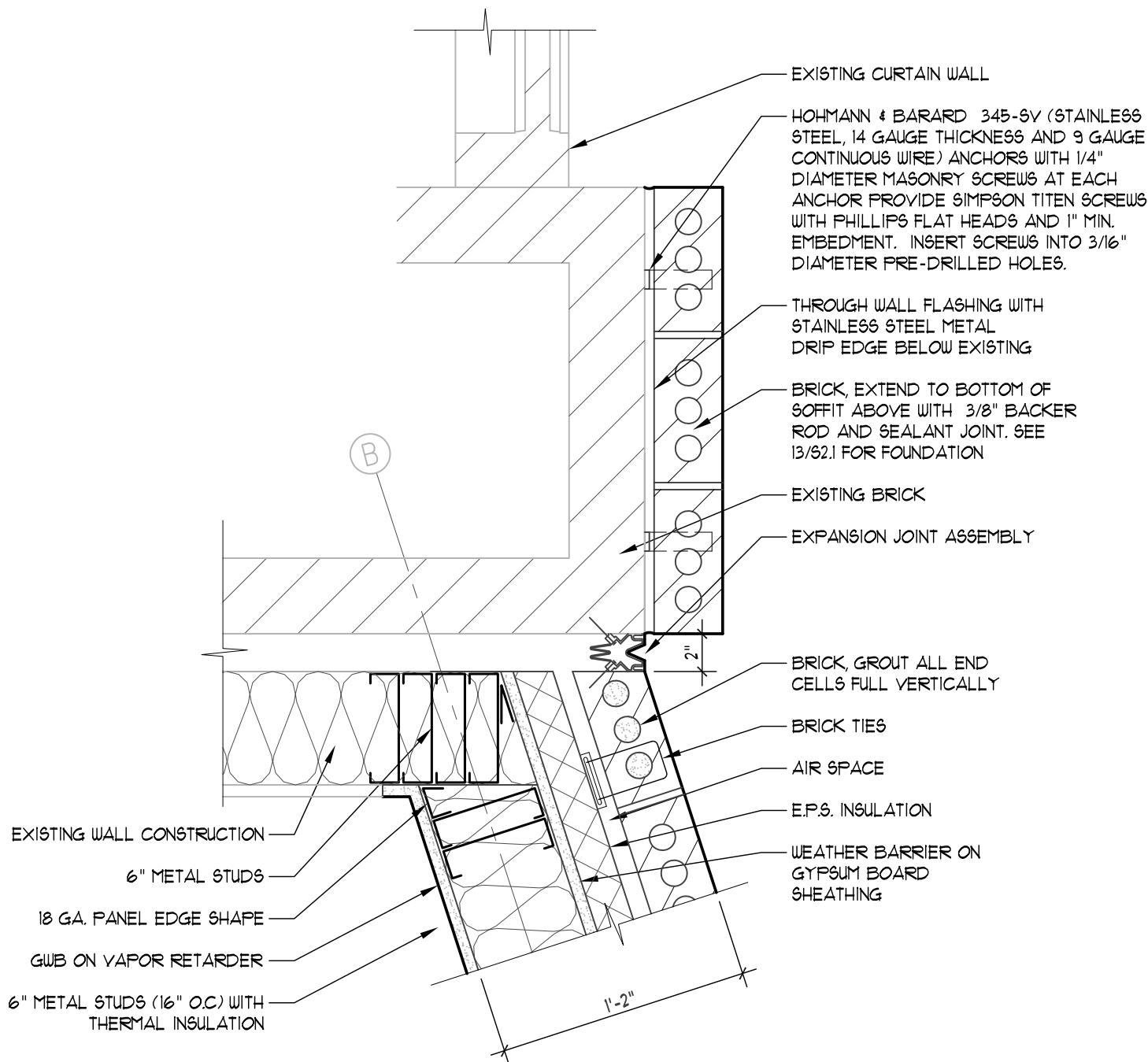
SHEET TITLE: FOUNDATION ADDITION TO SUPPORT ADDITIONAL BRICK VENEER ON EXTERIOR WALL



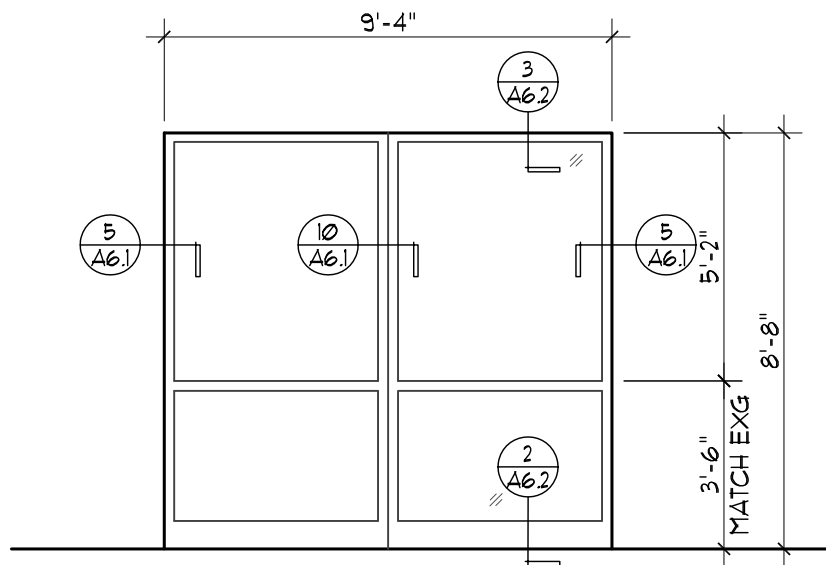
13

FOUNDATION ADD. TO SUPPORT BRICK VENEER

SCALE: 3/4" = 1'-0"



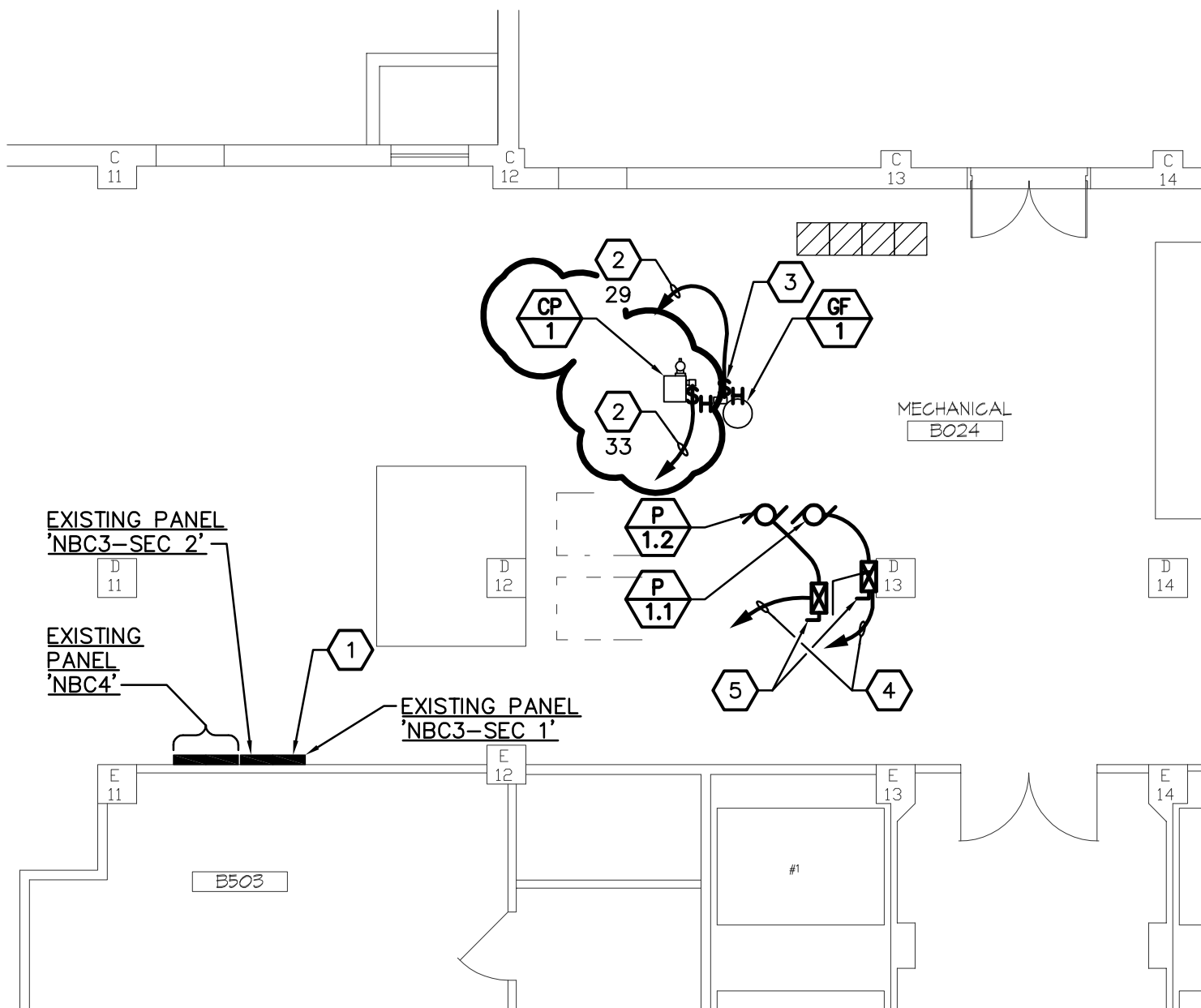
9 PLAN DETAIL
A6.1 SCALE: 1 1/2" = 1'-0"



BLAST RESISTANT GLAZED ALUM. CURTAIN WALL

2 WINDOW TYPES

SCALE: 1/4" = 1'-0"



2 PARTIAL BASEMENT ELECTRICAL PLAN

E3.2 SCALE: 1/8" = 1'-0"



FARRIS ENGINEERING

OMAHA | LINCOLN | DES MOINES | COLORADO SPRINGS
farris-usa.com

COPYRIGHT

FEL #: 122032

This document and the information contained may not be reproduced or excerpted from without the express written permission of Farris Engineering, Inc. Unauthorized copying, disclosure or construction use are prohibited by the copyright law.

Calvin L. Hinz
ARCHITECTS, P.C.
3705 N. 200th Street
Elkhorn, NE 68022
tel: (800) 291-6941
fax: (402) 291-9193
www.clharchitects.com

**CORRECT MAIN
ENTRANCE HVAC
#636-13-122**

Drawing Date 07/08/13

ADDENDUM NO. 2

Supplemental Drawing
ADD2/E3.2
From Sheet E3.2