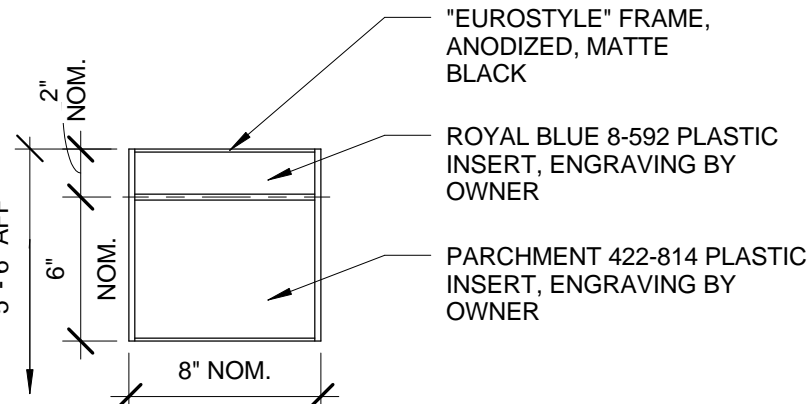


Finish Designation		Description		COLOR & MATERIAL LEGEND		Notes		Revisions	
Finish	Type	Color	Description	Basis of Design Manufacturer	Basis of Design Color Number	Basis of Design Color Name / Description	Notes	Revisions	
AC	A	1	Acoustical Ceiling Panel 24"x24"x5/8"	Armstrong	770	White Cortega Square Edge			
CT	A	1	Porcelain Tile 12"x24"	Iris Tile	IRG61224056	Nickel /Stroke with Coord. Bullnose (IRG624BT56)			
CT	B	1	Porcelain Tile Cove Base 6"x12"	Iris Tile	IRG612C056	Nickel /Stroke Semimatte			
CT	C	1	Boneyard Brick Recycled Thin Brick Field Tile	Trikenan	MB-MC30-1C1	Drift			
CT	C	2	Boneyard Brick Recycled Thin Brick Accent Tile	Trikenan	MBRE160	Frost			
CT	D	1	Boneyard Brick Recycled Thin Brick Cove Base	Trikenan	MB-MC30-1C1	Drift			
GL	A	1	Magnetic Backpainted Low Iron Glass	Skyline		White			
GR	A	1	Grout	Laticrete	24	Natural Gray to use with CT C 1/CT D 1			
GR	A	2	Grout	Laticrete	03	Slk to use with CT C 2			
GR	A	3	Grout	Laticrete	89	Smoke Gray to use with CT A 1/CT B 1/GL B 1/GL A 1			
GT	A	1	Glass Tile	American Olean	VA93	Whispering Stream/Gloss Visionaire			
GT	B	1	Glass Tile	Oceanside Glass	83617	Candlelight Tessera			
ME			Match Existing Finishes from First Floor						
MT	A	1	Metal Transition Strip	Shluter		Anodized Aluminum Reno U Transition from 5/32"			
PL	A	1	Plastic Laminate	Laminart	2407-T	Taupe Textured			
PL	A	2	Plastic Laminate	Formica	5875-58	Neutral Weft			
PM			Patch/Match Existing						
PT			Paint			Note: All paint colors refer to all paint types.			
PT	1		Paint	Sherwin Williams	7057	Silver Strand			
PT	2		Paint	Sherwin Williams	7540	Artisan Tan			
PT	3		Paint	Benjamin Moore		Ceiling White			
PT	4		Paint	Benjamin Moore	1573	Castle Walls			
PT	A		Low VOC, Eggshell Latex Enamel-Gloss Level 3						
PT	B		Low VOC, Semi-Gloss Latex Enamel-Gloss Level 5						
PT	C		Low VOC, Satin Epoxy-Gloss Level 3						
PT	D		Low VOC, Flat Latex Enamel-Gloss Level 1						
PT	E		Low VOC, Dryfall Epoxy Paint-Gloss Level 3						
RA	A	1	Resilient Transition Strip	Johnsonite	SSR-29-B	Moonstone/Reducer Strip from 1/16" or 1/8" to Floor.			
RB	A	1	Resilient Cove Base 4"	Flexco	024	Stone			
RF	A	1	Solid Vinyl Tile 12"x12"	Amtico	LA33	Linear Graphite			
RF	B	1	Solid Vinyl Tile 12"x12"	Azrock	STO 14-3	Cortina Stone			
RF	C	1	Welded Sheet Vinyl	Altro	SU2012	Pegasus			
RF	D	1	Vinyl Composition Tile 12"x12"	Armstrong	51839	Fortress White Standard Excelon			
RF	E	1							
SC	A	1	Special Coatings-Epoxy Resin Flooring	Tnemec		Deco-Tread/Deco-Clear			
SC	B	1	Special Coatings-Sealed Concrete						
SC	C	1	Special Coatings-Epoxy Resin	Tnemec	1C 280-11WH	Tnemec Glaze			
SM	A	1	Solid Surface Quartz	Cambria	0110	Snowden White			
SM	B	1	Solid Surface Material	Corian		Cameo/White			
SM	C	1	Solid Surface Material	Corian		Blue Pebble			
SS	A	1	Stainless Steel						
WSF	A	1	Resilient Sheet Flooring-Heat Welded Seams	Noraplan	2963	Sandbar Willow			

GENERAL NOTES

- WHERE FINISHES CHANGE AT DOORWAYS, THE CHANGE FROM ONE FINISH TO ANOTHER SHALL TAKE PLACE UNDERNEATH THE DOOR IN ITS CLOSED POSITION UNO.
 - WHERE FINISHES CHANGE AT CASED OPENINGS, THE CHANGE FROM ONE FINISH TO ANOTHER SHALL TAKE PLACE IN THE CENTERLINE OF THE OPENING UNO.
 - ALL HOLLOW METAL DOORS AND FRAMES TO BE PT C 1.
 - SEE A100 FINISH PLAN FOR LOCATIONS OF FLOORING TRANSITIONS.
 - SEE SHEETS A0400 & A0401 FOR LOCATION OF ROOM SIGNAGE AND VIEW A6 THIS SHEET FOR SIGN TYPE ELEVATION.
 - WHERE GLASS TILE IS USED THE WALL SURFACE SHOULD BE PAINTED WHITE SINCE THE TILE IS TRANSLUCENT.
- ROOM FINISH SCHEDULE KEYED NOTES**
- ALL FREESTANDING COLUMNS IN THESE ROOMS SHOULD HAVE CT D 1 BASE AND CT C 1 AND 2 TO MATCH WALL TILE PATTERN IN G032 DECONTAMINATION.
 - SEE ELEVATIONS FOR TYPICAL TILE PATTERN.
 - WHERE NOT INDICATED ON PLAN OR INTERIOR ELEVATION, GLA1 IS TO BE INSTALLED FROM TOP OF BASE TO CEILING, PRODUCT STANDARD WIDTHS, END PANELS TO BE EQUAL WIDTHS.
 - PAINT HANDRAIL PT B TO MATCH EXISTING HANDRAIL.



ROOM SIGNAGE
1 1/2" = 1'-0"

Room Number	Room Name	Floor Finish	Base Finish	WALL				CASEWORK			CEILING		Notes	Revisions	
				North	South	East	West	Base	Wall	Counter Top	Finish				
1-1	STAIR (EXIST)	ME	ME	ME											
1-2	STAIR	---	---	---											
1-3	STAIR	---	---	---											
1-4	STAIR	---	---	---											
CBG6	CORRIDOR	RFD1	RBA1	PTA1											
G017	CONFERENCE ROOM / TRAINING	RFA1	RBA1	GLA1											
G018	BREAK ROOM	RFA1	RBA1	PTA2/GTA1											
G019	CLERICAL	RFA1	RBA1	PTA2											
G019A	OFFICE, SPD CHIEF	RFA1	RBA1	PTA2											
G019B	VENDOR	RFA1	RBA1	PTA2											
G019C	OFFICE, ASST CHIEF	RFA1	RBA1	PTA2											
G023	SOILED ANTEROOM / PPE	RFB1	RBA1	PTA1											
G024	WOMEN'S LOCKER	RFA1	RBA1	PTA1											
G024A	WOMEN'S TLT/SHOWER	SCA1	CTB1	CTA1/SMB1/GTB1/PTC1											
G024B	WOMEN'S SHOWER	SCA1	CTB1	CTA1/SMB1/GTB1/PTC1											
G027	MEN'S LOCKER	RFA1	RBA1	PTA2											
G027A	MEN'S TLT / SHOWER	SCA1	CTB1	CTA1/SMB1/GTB1/PTC1											
G029	HAC	SCA1	CTD1	PTC1											
G030	STORAGE	SCA1	CTD1	PTC1											
G031	ANTE-ROOM (SOILED)	SCA1	CTD1	PTC1											
G032	DECONTAMINATION	SCA1	CTD1	CTC1, 2/PTC1											
G032A	MANUAL WASH	SCA1	CTD1	CTC1, 2/PTC1											
G034	AUTOMATIC CART WASH	SCB1	CTD1	CTC1, 2/PTC1											
G035	AUTOMATIC CART WASH	SCB1	CTD1	CTC1, 2											
G036	ENDOSCOPE PROCESSING	SCA1	CTD1	CTC1, 2/PTC1											
G037	CLEAN ANTEROOM / PPE	RFB1	RBA1	PTA1											
G038	MEN'S LOCKER	RFA1	RBA1	PTA1											
G038A	MEN'S TLT / SHOWER	SCA1	CTB1	CTA1/SMB1/GTB1/PTC1											
G040	WOMEN'S LOCKER	RFA1	RBA1	PTA1											
G040A	WOMEN'S TLT / SHOWER	SCA1	CTB1	CTA1/SMB1/GTB1/PTC1											
G042	OFFICE, SHARED	RFA1	RBA1	PTA1											
G043	PREP, ASSEMBLY, STERILIZATION	SCA1	CTD1	CTC1, 2/PTC1											
G043A	ETO STERILIZER	SCA1	CTD1	CTC1, 2/PTC1											
G045	ETO AERATOR	SCA1	CTD1	PTC1											
G046	ANTE	RFB1	RBA1	PTA1											
G047	STORAGE, BULK (SPD)	RFB1	RBA1	PTA1											
G048	CLEAN RECEIVING/ BREAKOUT	RFB1	RBA1	PTA1											
G050	DATA	SCB1	RBA1	PTA1											
G051	STORAGE, BULK (LOGISTICS)	RFB1	RBA1	PTA1											
G052	DISPATCH	RFC1	RBA1	PTC1											
G052A	DETERGENT/WATER TREATMENT	SCA1	RBA1	PTC1											
G052B	HAC	RFC1	RBA1	PTC1											
G052C	STERILIZER ACCESS	SCA1	CTD1	PTC1											
G054	STERILE STORAGE (SURGERY)	RFC1	RBA1	PTC1											
G055	NONSTERILE STORAGE (NURSING)	RFC1	RBA1	PTC1											
G056	EQUIPMENT STORAGE / TESTING	RFC1	RBA1	PTC1											
G057	DISPATCH	RFB1	RBA1	PTC1											
G059	ANTEROOM - DISPATCH	RFB1	RBA1	PTA1											
G151	ELEVATOR LOBBY	WSF 1	WSF 1	PTA1											
G200	FUTURE ELEVATOR LOBBY	---	---	---											
G201	ROOF ACCESS	---	---	---											
G300	FUTURE ELEVATOR LOBBY	---	---	---											
G400	ELEVATOR MACHINE ROOM	SCB1	RBA1	PTC1											

ROOM SIGNAGE SCHEDULE									
Sign Number	Designating Room	Room Where Installed	Count	Type Mark	Basis of Design/Model	Description			
1-B	1-B	CBG8	1	ROOM SIGNAGE	JOHNSON PLASTICS, EUROSTYLE	8"x8" BLACK WITH BLANK PLASTIC INSERTS. 2" INSERT ROW ABOVE 6" INSERT ROW			
G016	G016	G055	1	ROOM SIGNAGE	JOHNSON PLASTICS, EUROSTYLE	8"x8" BLACK WITH BLANK PLASTIC INSERTS. 2" INSERT ROW ABOVE 6" INSERT ROW			
G017	G017	CBG6	1	ROOM SIGNAGE	JOHNSON PLASTICS, EUROSTYLE	8"x8" BLACK WITH BLANK PLASTIC INSERTS. 2" INSERT ROW ABOVE 6" INSERT ROW			
G018	G018	CBG6	1	ROOM SIGNAGE	JOHNSON PLASTICS, EUROSTYLE	8"x8" BLACK WITH BLANK PLASTIC INSERTS. 2" INSERT ROW ABOVE 6" INSERT ROW			
G019	G019	CBG6	1	ROOM SIGNAGE	JOHNSON PLASTICS, EUROSTYLE	8"x8" BLACK WITH BLANK PLASTIC INSERTS. 2" INSERT ROW ABOVE 6" INSERT ROW			
G019A	G019A	G019	1	ROOM SIGNAGE	JOHNSON PLASTICS, EUROSTYLE	8"x8" BLACK WITH BLANK PLASTIC INSERTS. 2" INSERT ROW ABOVE 6" INSERT ROW			
G019B	G019B	G019	1	ROOM SIGNAGE	JOHNSON PLASTICS, EUROSTYLE	8"x8" BLACK WITH BLANK PLASTIC INSERTS. 2" INSERT ROW ABOVE 6" INSERT ROW			
G019C	G019C	G019	1	ROOM SIGNAGE	JOHNSON PLASTICS, EUROSTYLE	8"x8" BLACK WITH BLANK PLASTIC INSERTS. 2" INSERT ROW ABOVE 6" INSERT ROW			
G023	G023	CBG6	1	ROOM SIGNAGE	JOHNSON PLASTICS, EUROSTYLE	8"x8" BLACK WITH BLANK PLASTIC INSERTS. 2" INSERT ROW ABOVE 6" INSERT ROW			
G024	G024	G023	1	ROOM SIGNAGE	JOHNSON PLASTICS, EUROSTYLE	8"x8" BLACK WITH BLANK PLASTIC INSERTS. 2" INSERT ROW ABOVE 6" INSERT ROW			
G024A	G024A	G024	1	ROOM SIGNAGE	JOHNSON PLASTICS, EUROSTYLE	8"x8" BLACK WITH BLANK PLASTIC INSERTS. 2" INSERT ROW ABOVE 6" INSERT ROW			
G024B	G024B	G024	1	ROOM SIGNAGE	JOHNSON PLASTICS, EUROSTYLE	8"x8" BLACK WITH BLANK PLASTIC INSERTS. 2" INSERT ROW ABOVE 6" INSERT ROW			
G027	G027	G023	1	ROOM SIGNAGE	JOHNSON PLASTICS, EUROSTYLE	8"x8" BLACK WITH BLANK PLASTIC INSERTS. 2" INSERT ROW ABOVE 6" INSERT ROW			
G027A	G027A	G027	1	ROOM SIGNAGE	JOHNSON PLASTICS, EUROSTYLE	8"x8" BLACK WITH BLANK PLASTIC INSERTS. 2" INSERT ROW ABOVE 6" INSERT ROW			
G029	G029	G032	1	ROOM SIGNAGE	JOHNSON PLASTICS, EUROSTYLE	8"x8" BLACK WITH BLANK PLASTIC INSERTS. 2" INSERT ROW ABOVE 6" INSERT ROW			
G030	G030	G032	1	ROOM SIGNAGE	JOHNSON PLASTICS, EUROSTYLE	8"x8" BLACK WITH BLANK PLASTIC INSERTS. 2" INSERT ROW ABOVE 6" INSERT ROW			
G031	G031	CBG8	1	ROOM SIGNAGE	JOHNSON PLASTICS, EUROSTYLE	8"x8" BLACK WITH BLANK PLASTIC INSERTS. 2" INSERT ROW ABOVE 6" INSERT ROW			
G032	G032	G031	1	ROOM SIGNAGE	JOHNSON PLASTICS, EUROSTYLE	8"x8" BLACK WITH BLANK PLASTIC INSERTS. 2" INSERT ROW ABOVE 6" INSERT ROW			
G032	G032	G023	1	ROOM SIGNAGE	JOHNSON PLASTICS, EUROSTYLE	8"x8" BLACK WITH BLANK PLASTIC INSERTS. 2" INSERT ROW ABOVE 6" INSERT ROW			
G032A	G032A	G032	1	ROOM SIGNAGE	JOHNSON PLASTICS, EUROSTYLE	8"x8" BLACK WITH BLANK PLASTIC INSERTS. 2" INSERT ROW ABOVE 6" INSERT ROW			
G032A	G032A	G055	1	ROOM SIGNAGE	JOHNSON PLASTICS, EUROSTYLE	8"x8" BLACK WITH BLANK PLASTIC INSERTS. 2" INSERT ROW ABOVE 6" INSERT ROW			
G034	G034	G032	1	ROOM SIGNAGE	JOHNSON PLASTICS, EUROSTYLE	8"x8" BLACK WITH BL			