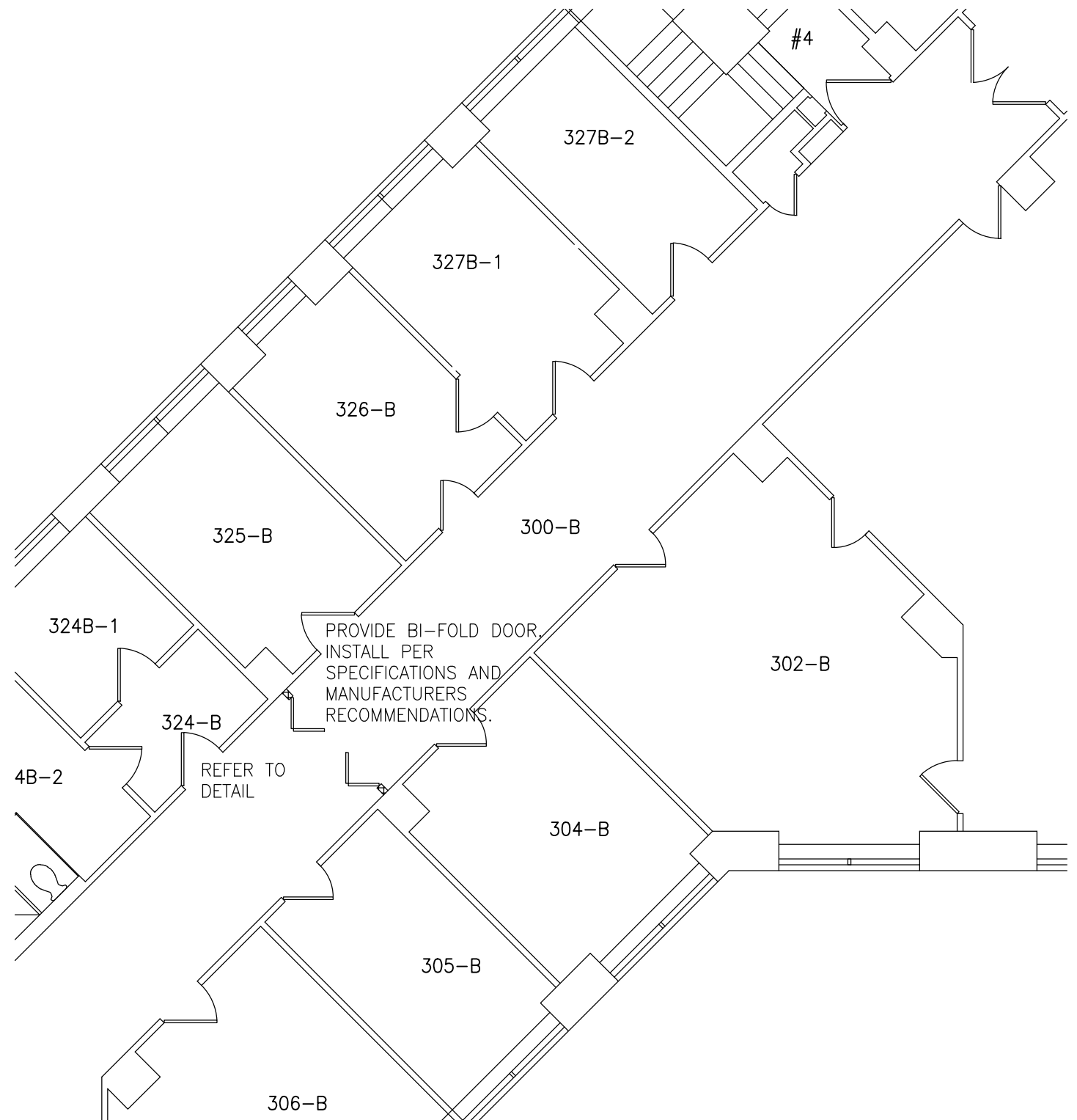


| | DOOR OPENING | FULL BREAKOUT OPENING | FRAME WIDTH | DOOR WIDTH |
|---------|------------------|-----------------------------|----------------|---------------|
| MINIMUM | 52 3/8" [1330] | 64 1/4" [1632] | 6'-4" [1930] | 16 3/4" [425] |
| | 59 15/16" [1522] | 72 1/4" [1835] | 7'-0" [2134] | 18 3/4" [476] |
| | 65 9/16" [1665] | 78 1/4" [1988] | 7'-6" [2286] | 20 1/4" [514] |
| | 71 1/4" [1810] | 84 1/4" [2140] | 8'-0" [2438] | 21 3/4" [552] |
| | 76 15/16" [1954] | 90 1/4" [2292] | 8'-6" [2591] | 23 1/4" [591] |
| MAXIMUM | 82 5/8" [2099] | 96 1/4" [2445] | 9'-0" [2743] | 24 3/4" [629] |

NOTE:
CORRIDOR IS APPROXIMATELY
8' WIDE - FIELD VERIFY
EXACT DIMENSIONS

FOLDING DOOR DETAIL

NO SCALE



PARTIAL THIRD FLOOR PLAN

SCALE: 1"=1/8"

| | | | | | | | |
|--|--|---|--|---|--|----------------------|--|
| ISSUE FOR BID 6/14/13 10:28:26 AM Revision | | VA WESTERN NEW YORK HEALTHCARE SYSTEM 3495 BAILEY AVENUE BUFFALO, NEW YORK 14215 | | Drawing Title PARTIAL THIRD FLOOR PLAN AND DETAILS | | Date: JUNE 14, 2013 | |
| | | Building Number 1 | | Checked JR | | Drawn RLR | |
| Date 6/14/13 | | Location: V.A.M.C. BUFFALO, NEW YORK | | Project Title WOMEN'S WELLNESS ENTRY DOOR | | Station No. 528 | |
| | | | | 13-s22 A-101 | | Office of Facilities | |