

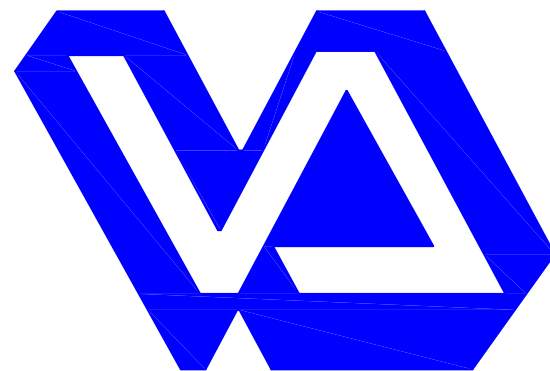
DRAWING KEY NOTES:

SPRINKLERS LOCATED ABOVE AUDIOLOGY BOOTHS.

SYMBOLS LIST

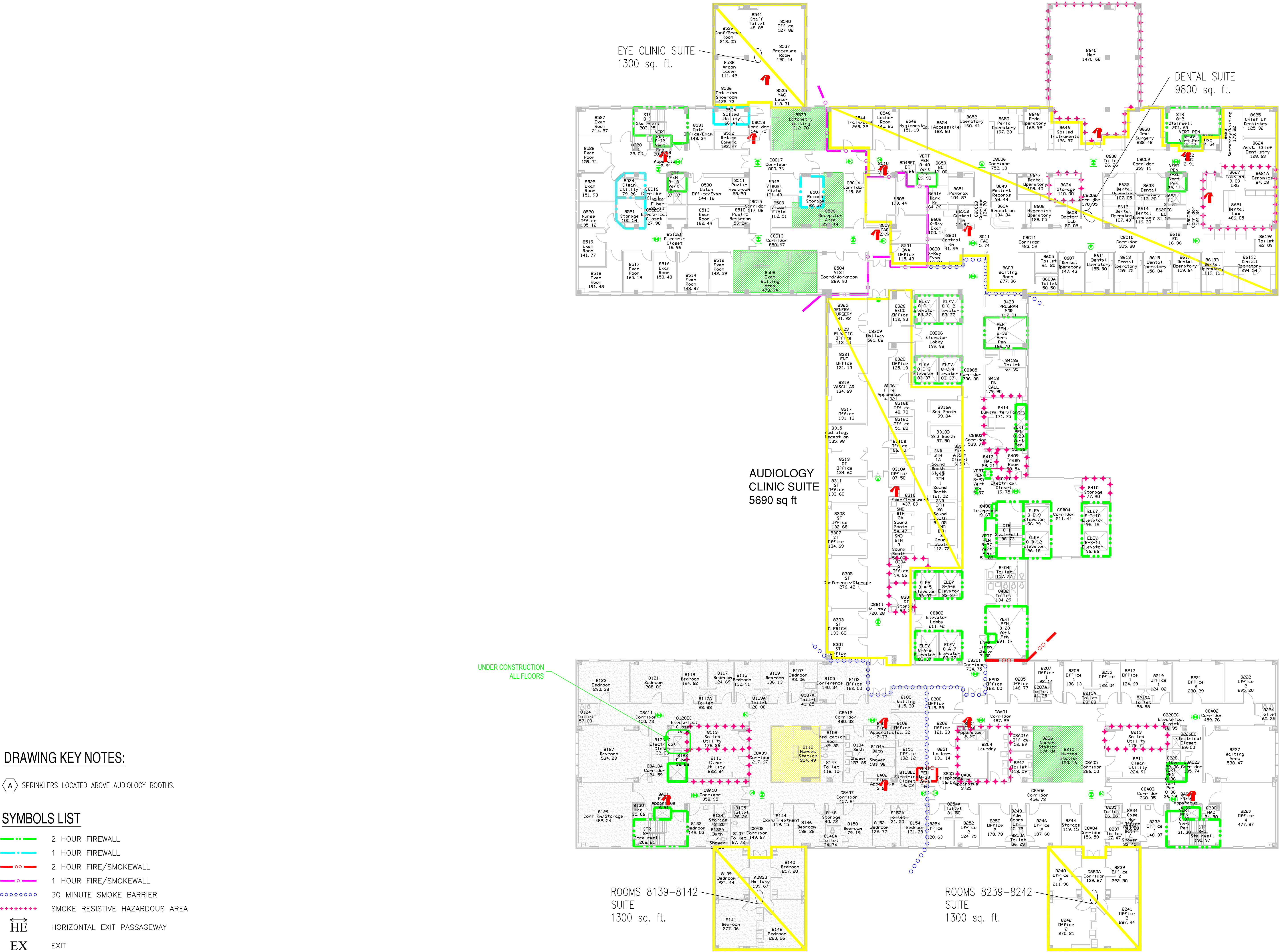
- 2 HOUR FIREWALL
- 1 HOUR FIREWALL
- 2 HOUR FIRE/SMOKEWALL
- 1 HOUR FIRE/SMOKEWALL
- 30 MINUTE SMOKE BARRIER
- SMOKE RESISTIVE HAZARDOUS AREA
- HORIZONTAL EXIT PASSAGEWAY
- EXIT
- EXIT PASSAGEWAY
- LINEN CHUTE
- SUITE DESIGNATIONS
- AREA OPEN TO CORRIDOR - WITH SMOKE DETECTION
- AREA OPEN TO CORRIDOR - NO SMOKE DETECTION REQUIRED

Revisions	Date
FP&C Proj#:	1751.16

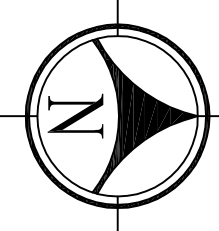


Dept. of Veterans Affairs
Medical Center
5000 W. National Ave.
Milwaukee, WI 53295

Approved: Chief, Facilities Management Services	Project Title	Drawing Title	Date
Approved: Medical Center Director	STATEMENT OF CONDITIONS	BUILDING 111 EIGHTH FLOOR	07/02/12
Approved:	Client Project No.	Contract No.	Scale:
Approved:	Building No. BUILDING 111	AutoCAD File Name SOC09-111-08	N.T.S.
Approved:	Location VA MEDICAL CENTER MILWAUKEE, WISCONSIN	Designed By BAA	Drawing No. SOC-9
Approved:		Drawn By SFF/JV	Dwg. 10 of 14
Approved:		Checked By BAA	



HAP OCCUPANCY
10,450s.f.
AMBULATORY OCCUPANCY
42,787s.f.



BUILDING 111 EIGHTH FLOOR
FULLY SPRINKLERED
HEALTHCARE OCCUPANCY