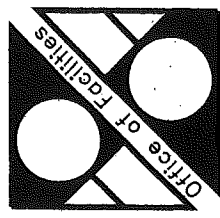


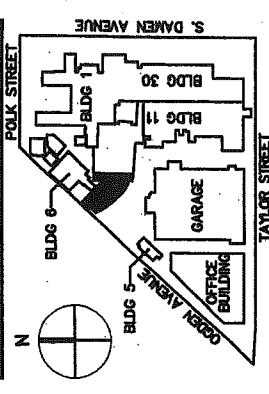
ISSUED FOR BID
AND CONSTRUCTION
FULLY SPRINKLERED

Revision	Date	No.
ISSUED WITH AMENDMENT NO. 2	30 JUN 04	01
NO.1 ISSUED TO REFLECT BID		
AMENDMENTS NOS. 1 THRU 6	29 JUL 04	02
BULLETIN NO. 8	17 AUG 05	03



Department of
Veterans Affairs

DEPARTMENT OF VETERANS AFFAIRS;
FACILITIES MANAGEMENT SERVICES;
FACILITIES PLANNING AND ANALYSIS



CONSOLIDATION AND
MODERNIZATION
OF INPATIENT SPACE
JESSE BROWN VA MEDICAL CENTER
820 SOUTH DAMEN AVENUE
CHICAGO, IL 60612
312-469-2100

Project No.: 537CA2406

Building No.: 2

Approved: Project Director

PRINCIPAL CONSULTANT
WARNER CONSTRUCTION CONSULTANTS, INC.
300 N. LAKE STREET, SUITE 200, CHICAGO, IL 60610
312-469-4800

CIVIL ENGINEER
TERRA ENGINEERING, LTD.
300 N. LAKE STREET, SUITE 200, CHICAGO, IL 60610
312-469-4800

MATERIALS MANAGEMENT
CINILITTLE SCHACHINGER, LLC
2775 RESARON BLVD, SUITE 700, ROYAL LAKES, IL 60068
312-554-7500

LIFESAFETY ENGINEERS
ROLF JENSEN & ASSOCIATES, INC.
300 N. LAKE STREET, SUITE 200, CHICAGO, IL 60610
312-469-4800

EXECUTIVE MEP CONSULTANT
NIKA TECHNOLOGIES, INC.
1400 N. LAKE STREET, SUITE 200, CHICAGO, IL 60610
312-469-4800

COST CONSULTANT
CONSTRUCTION COST SYSTEMS, INC.
1400 N. LAKE STREET, SUITE 200, CHICAGO, IL 60610
312-469-4800

SECURITY CONSULTANT
SHINER & ASSOCIATES, INC.
1400 N. LAKE STREET, SUITE 200, CHICAGO, IL 60610
312-469-4800

ENVIRONMENTAL CONSULTANT
GSG ENVIRONMENTAL, INC.
1400 N. LAKE STREET, SUITE 200, CHICAGO, IL 60610
312-469-4800

WINDOW CONSULTANT
CITADEL, INC.
1400 N. LAKE STREET, SUITE 200, CHICAGO, IL 60610
312-469-4800

SOM/Ellerbe Becket
JOINT VENTURE

SKIDMORE OWINGS & MERRILL LLP
224 SOUTH MICHIGAN AVENUE
SUITE 1000, CHICAGO, ILLINOIS 60604
312-554-9000

ELLERBE BECKET ARCHITECTS AND ENGINEERS, INC.
1001 G STREET NW
SUITE 1000, WASHINGTON, DC 20001
202-654-9300

GROUND LEVEL FLOOR PLAN
WEST

Scale: 1/8"=1'-0"

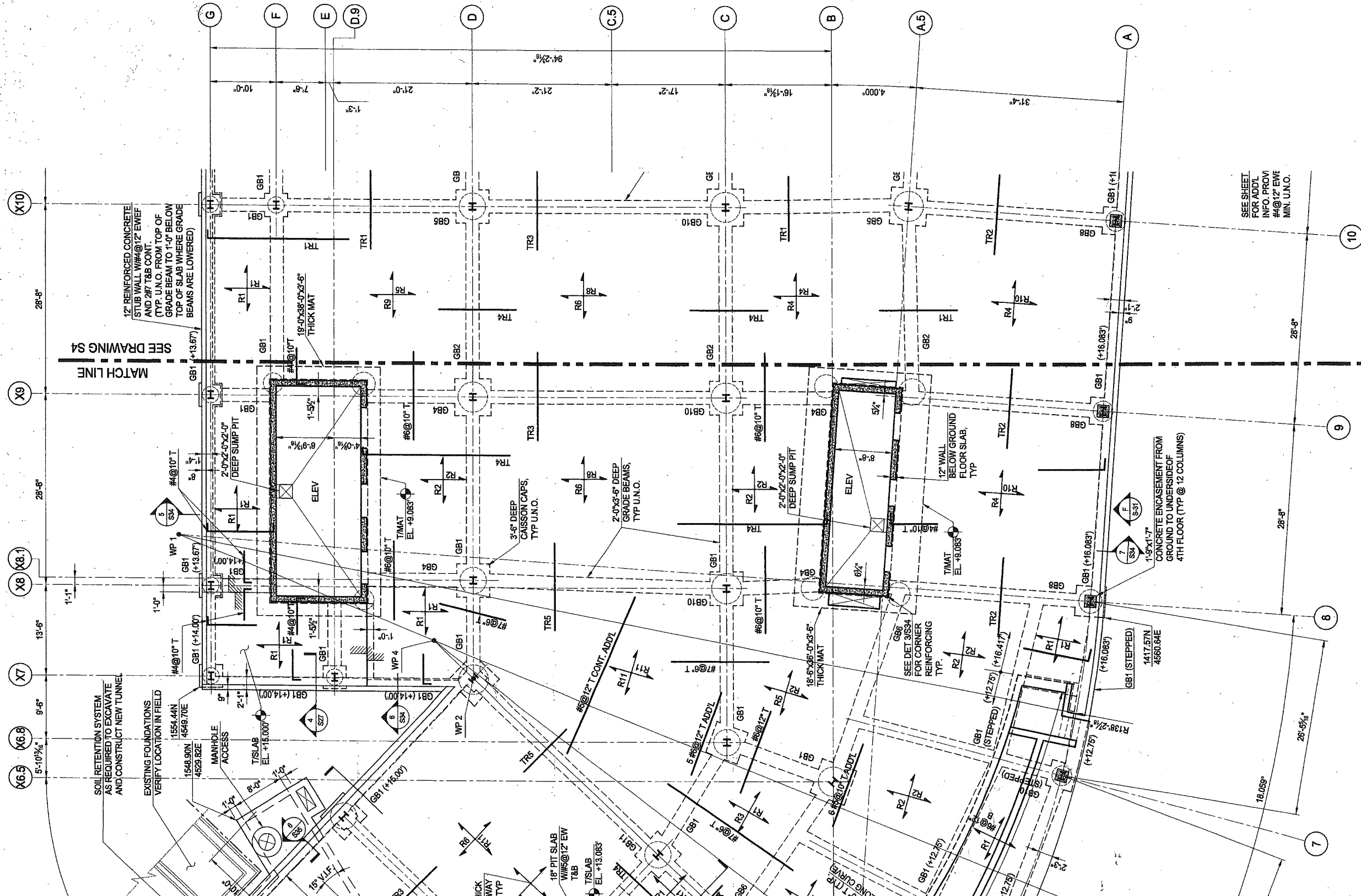
Date: 01 JUN 04

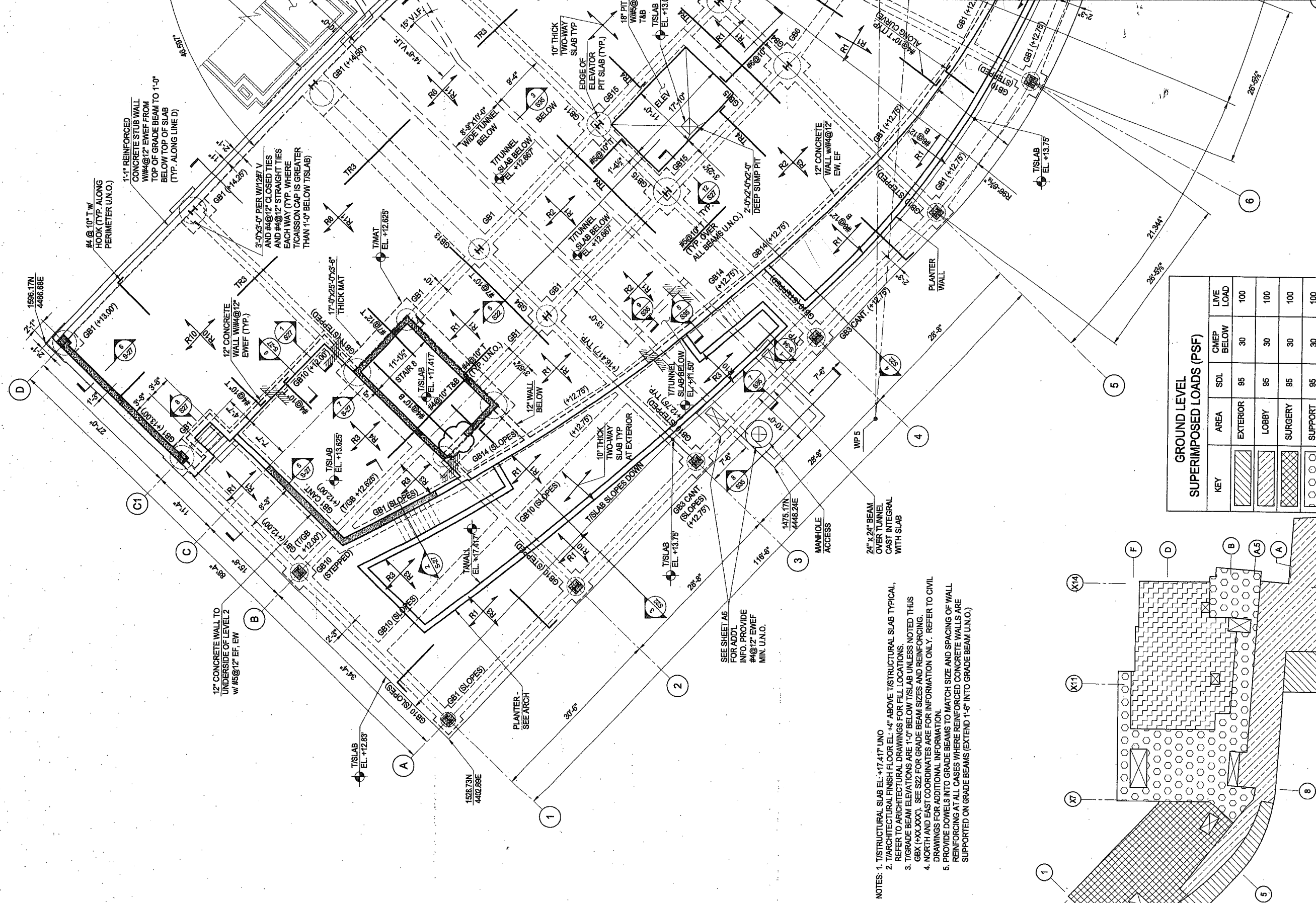
In Charge: RJ

Drawn By: RO

Checked By: MH

2-S3

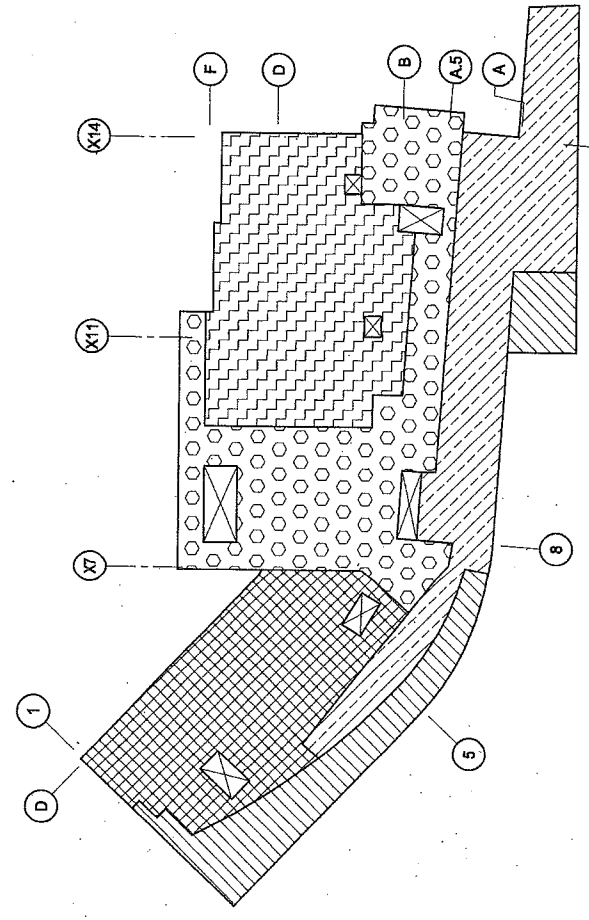




NOTES: 1. T/STRUCTURAL SLAB EL. +17.417 UNO
 2. T/ARCHITECTURAL FINISH FLOOR EL. +4' ABOVE T/STRUCTURAL SLAB TYPICAL.
 3. T/GRADE BEAM ELEVATIONS ARE 1'-0" BELOW T/SLAB UNLESS NOTED THUS GBX (+XXXX). SEE S22 FOR GRADE BEAM SIZES AND REINFORCING.
 4. NORTH AND EAST COORDINATES ARE FOR INFORMATION ONLY. REFER TO CIVIL DRAWINGS FOR ADDITIONAL INFORMATION.
 5. PROVIDE DOWELS INTO GRADE BEAMS TO MATCH SIZE AND SPACING OF WALL REINFORCING AT ALL CASES WHERE REINFORCED CONCRETE WALLS ARE SUPPORTED ON GRADE BEAMS (EXTEND 1'-6" INTO GRADE BEAM U.N.O.)

GROUND LEVEL SUPERIMPOSED LOADS (PSF)				
KEY	AREA	SDL	CMEP BELOW	LIVE LOAD
	EXTERIOR	95	30	100
	LOBBY	95	30	100
	SURGERY	95	30	100
	SUPPORT	95	30	100
	SUPPLY PROC. & DIST.	95	30	100

SDL = SUPERIMPOSED DEAD LOAD (EXCLUDING CMEP)
 CMEP = CEILING, MECHANICAL, ELECTRICAL AND PLUMBING LOADS



GROUND LEVEL LOADING DIAGRAM