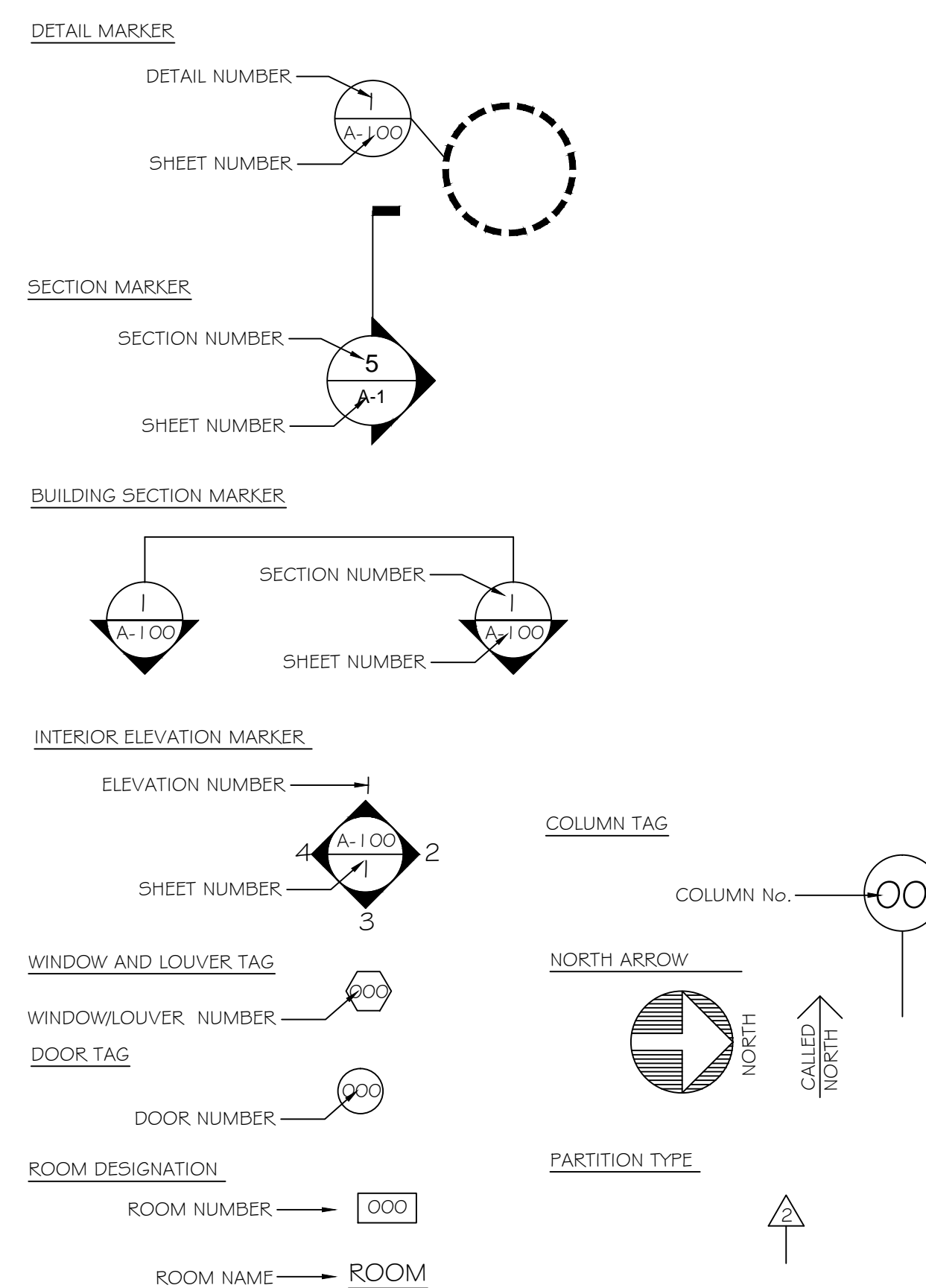


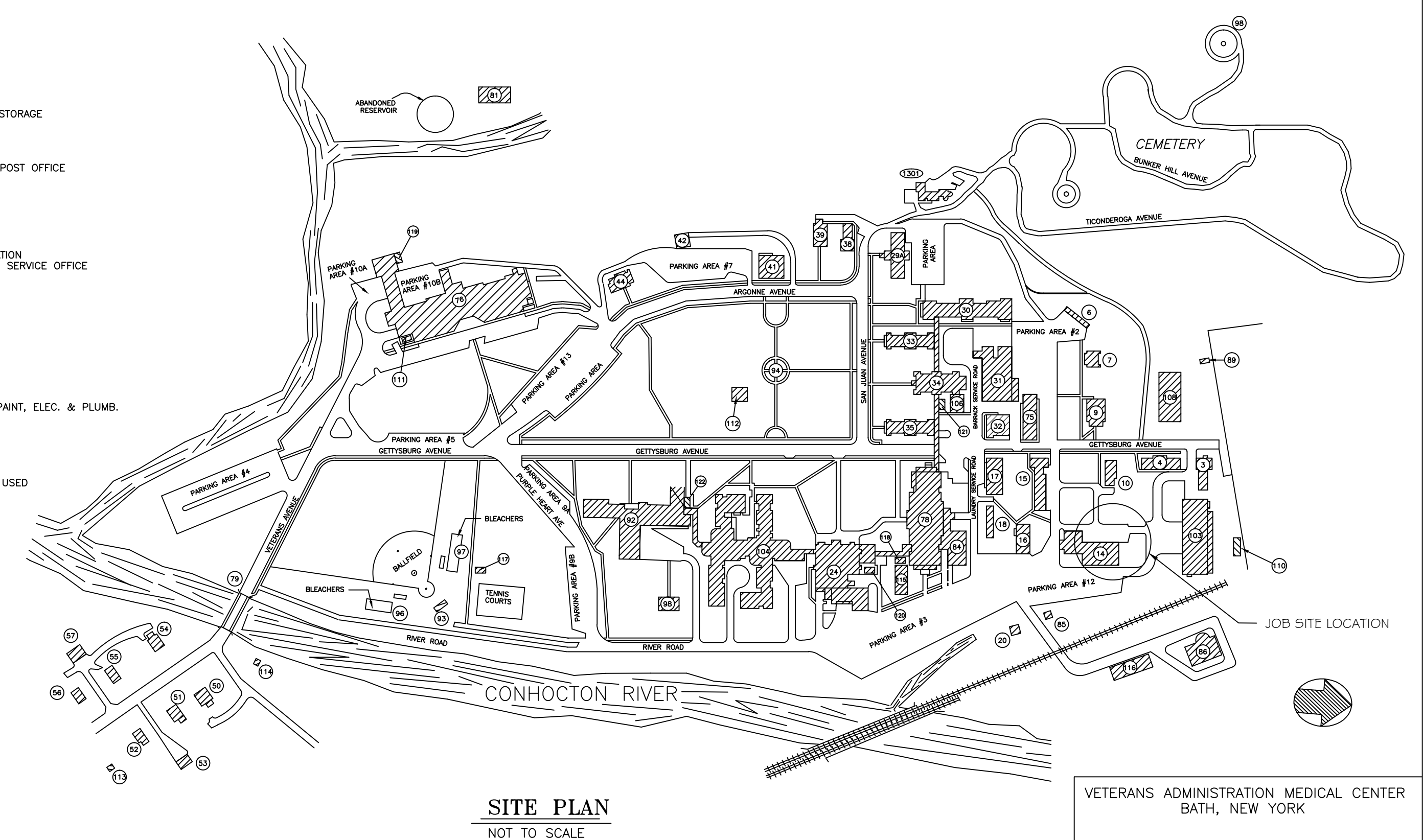
V.A. MEDICAL CENTER  
BATH, NEW YORK 14810

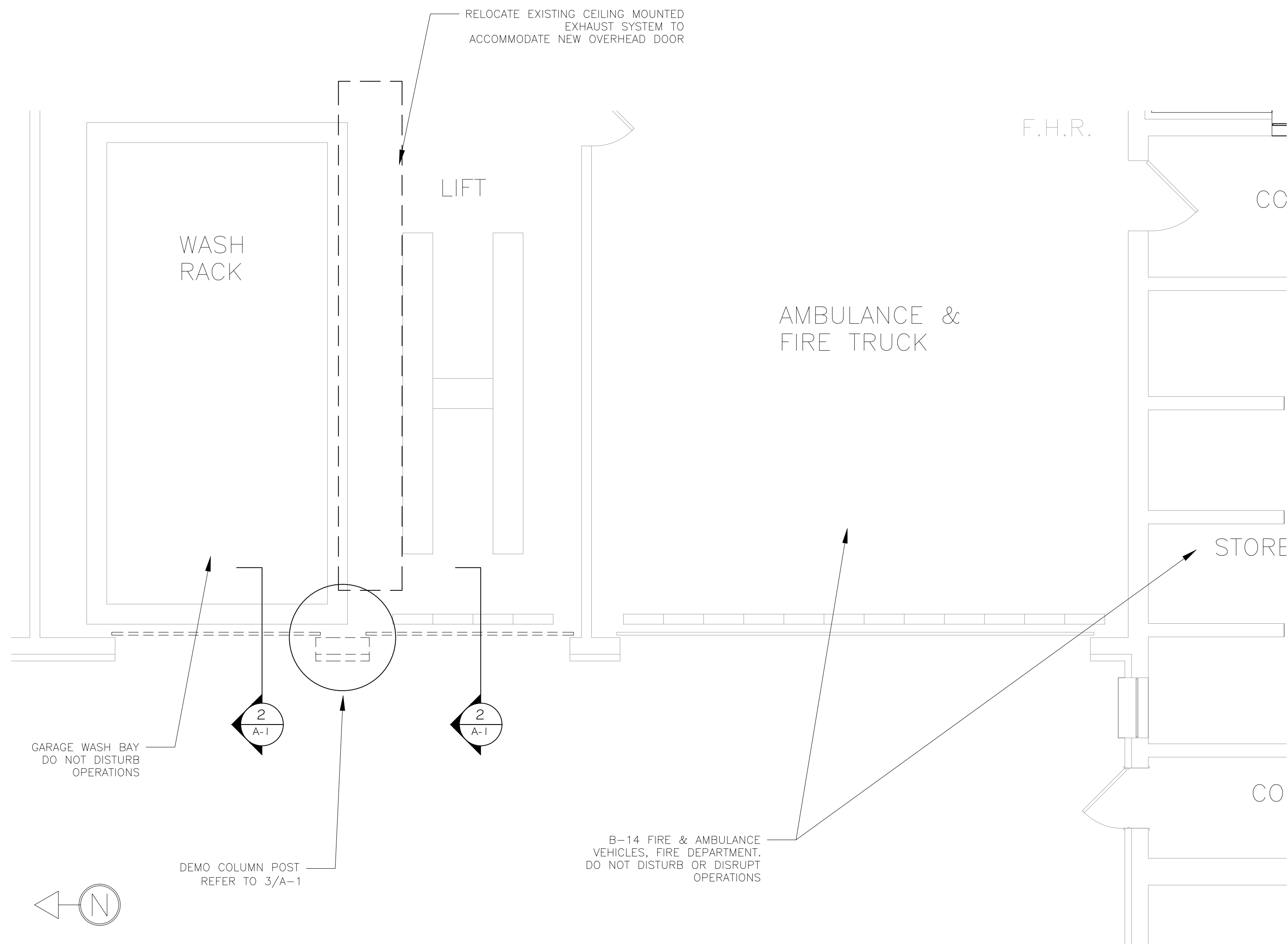
<u>DRAWING NO.</u>	<u>SYMBOL</u>	<u>SHEET</u>	<u>TITLE</u>
VAMC-528AG-1758	T-1	1 OF 2	COVER SHEET
VAMC-528AG-1758	A-1	2 OF 2	LAYOUTS

AB	ANCHOR BOLT	EA	EACH
AC	AIR CONDITIONING	EL	ELEVATION
ACT	ACOUSTICAL CEILING TILE	ELEC	ELECTRIC
ADDL	ADDITIONAL	ELEV	ELEVATION
ADJ	ADJUSTABLE	EQ	EQUAL
AFP	ABOUT FINISH FLOOR	EW	EACH WAY
ALT	ALTERNATE	EXT	EXTERIOR
AL	ALUMINUM	EXG	EXISTING
ARCH	ARCHITECTURAL		
ASPH	ASPHALT	FBSL	FIBERGLASS
		FD	FLOOR DRAIN
BY	BOTTOM of	FTE	FINISH FLOOR ELEVATION
BD	BOARD	FIN	FIN
BL	BUILDING LINE	FLR	FLOOR
BUDG	BUILDING	FNDR	FOUNDATION
BLK	BLOCK	FP	FIREPLACE
BKUG	BLOCKING	FR	FAMILY ROOM
BP	BEARING PLATE	FTG	FOOTING
BR	BRICK		
BSMT	BASEMENT	GC	GENERAL CONTRACTOR
BTWN	BETWEEN	GL	GLASS
BRG	BEARING	GN	GLUE AND NAIL
		GWB	GYPSPUM WALL BOARD
		GP	GYPSPUM
CB	CATCH BASIN		
CC	CENTER TO CENTER		
CEM	CEMENT	H	HIGH
CG	CORNER GUARD	HC	HOLLOW CORE
CJ	CONSTRUCTION JOINT or CONTROL JOINT	HDR	HEADER
CLG	CEILING	HDW	HARDWARE
CMU	CONCRETE MASONRY UNIT	HGT	HEIGHT
COL	COLUMN	HM	HOLLOW METAL
COMP	COMPACTED	HORIZ	HORIZONTAL
CONC	CONCRETE	H.P.	HIGH POINT
CONST	CONSTRUCTION	H.R.	HANDRAIL
CONT	CONTINUOUS	HW	HOT WATER
COORD	COORDINATE		
CFT	CARPET	INS	INSULATION
CRS	COURSE	INT	INTERIOR
CT	CERAMIC TILE		
		JAN.	JANITORIAL
		JOIST	JOIST
DBL	DEEP/ DEPTH	JT	JOINT
DET	DETAIL		
DF	DOUBLE FIR		
DIA	DIAMETER	K	KITCHEN
DIM	DIMENSION		
DTL	DETAIL	LF	LINEAR FEET
DW	DISHWASHER	LOC	LOCATION
DWG	DRAWING	LVL	LAMINATED VENEER LUMBER



- 3 EQUIPMENT STORAGE
- 4 LUMBER SHED
- 5 ENGINEERING STORAGE
- 6 STUDENT HOUSING
- 7 ENGINEERING OFFICE
- 10 DAY TREATMENT CENTER
- 11 FINE DEMENTATION & GARAGE
- 15 GARAGES/GEN. REPAIR, MASONRY STORAGE
- 16 GARDEN
- 17 LAUNDRY/PRINT SHOP/PG
- 18 VOLUNTEER SERVICES
- 19 SEWER - PUMP HOUSE
- 20 MAIN DINING ROOM & KITCHEN & POST OFFICE
- 29A UPHOLSTERY SHOP/AUSEUM
- 31 CATERING & ADMINISTRATION
- 32 BOILER PLANT
- 33 GERIATRIC OFFICES
- 34 HOME BASED SOCIAL WORK
- 35 SECTION 4 - IT
- 36 SECTION 4 - DOMICILIARY
- 37 SECTION 4 - CATERING/ADMINISTRATION
- 38 NYS VET AFFAIRS OFFICE/CHAPLAIN SERVICE OFFICE
- 39 MAIN PLACES
- 40 HUMAN RESOURCES, CONTRACTING
- 41 NIGHT GUARD
- 42 POLICE
- 50 QUARTERS
- 51 QUARTERS
- 52 QUARTERS
- 53 THIRTEEN QUARTERS
- 54 QUARTERS
- 55 QUARTERS
- 56 QUARTERS
- 57 QUARTERS
- 65 REPAIR GARAGE
- 75 ENGINEERING SHOPS & STORAGE-PANT, ELEC. & PLUMB
- 76 REPAIR GARAGE
- 78 SECTION 2 - CLC
- 80 SECTION 2 - CLC
- 81 UNDERGROUND RESERVOIR
- 82 COMBATOR WASTE TREATMENT
- 83 INCINERATOR - NOT USED
- 84 SEWAGE TREATMENT PLANT - NOT USED
- 85 RECREATION & LIBRARY
- 93 FIELD HOUSE
- 94 PARKING GROUND - FLAG POLE
- 95 CEMETERY FLAG POLE
- 96 BLAGERS - EAST
- 97 BLAGERS - NORTH
- 98 COVERED PICNIC AREA
- 103 SPECIALTY WAREHOUSE
- 104 SECTION 1 - DOMICILIARY
- 106 GAITHERN PANT
- 107 HEAVY EQUIPMENT STORAGE
- 108 EMS STORAGE BUILDING
- 111 BASED PLATFORM
- 112 GAZEBO
- 113 WATER HOUSE
- 114 GAUGE HOUSE \*
- 115 WATER HOUSE
- 116 IMPOUND YARD
- 117 FIELD HOUSE STORAGE
- 118 GREEN HSE. STORAGE
- 119 UNED PLATFORM
- 120 SMOKING SHELTER (B92)
- 121 SMOKING SHELTER (B10)
- 122 SMOKING SHELTER (B24)
- 123 NATIONAL CEMETERY

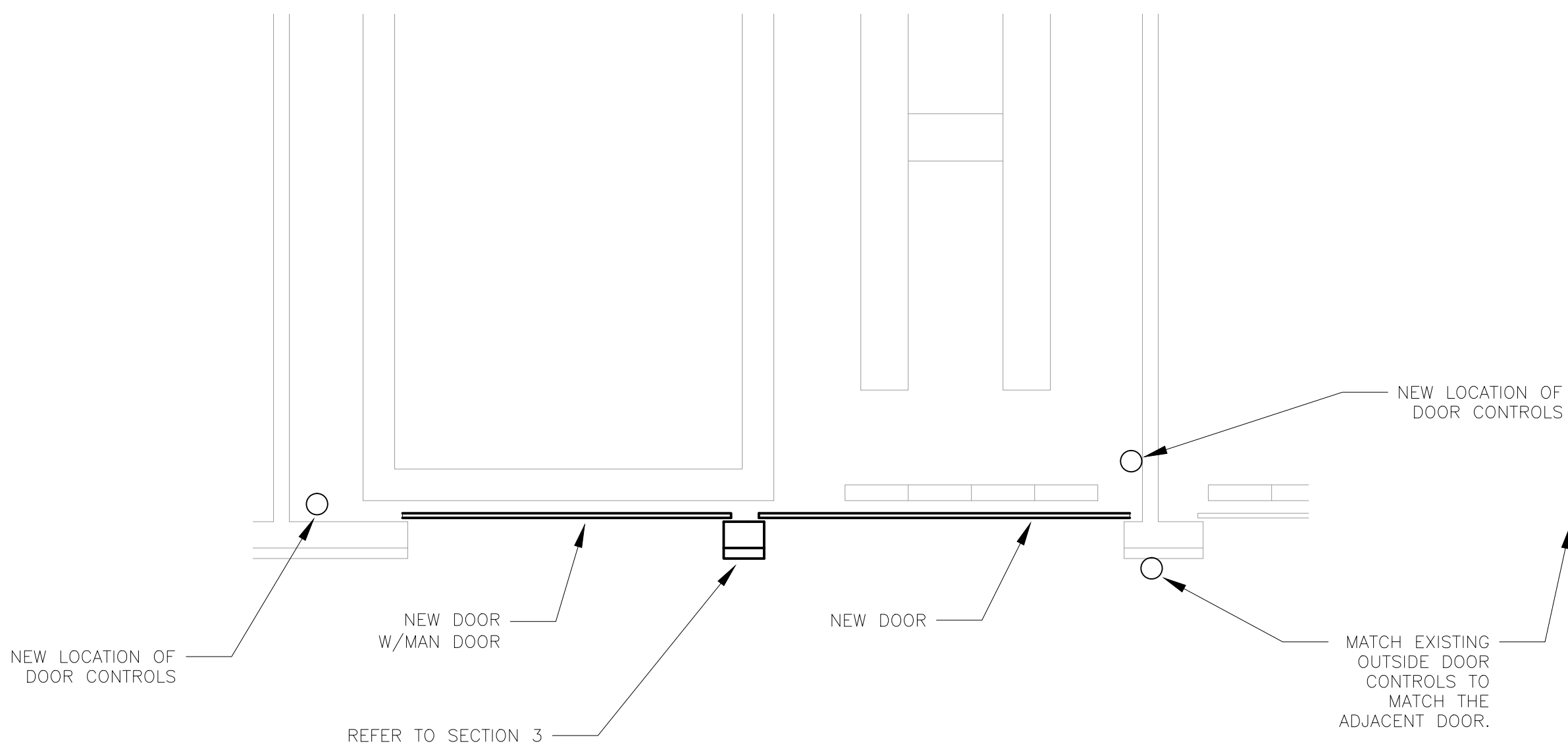
[illegible]



1 PARTIAL DETAIL OF B-14 GARAGE AREA-DEMO  
SCALE: 1/4"=1'

NOTES

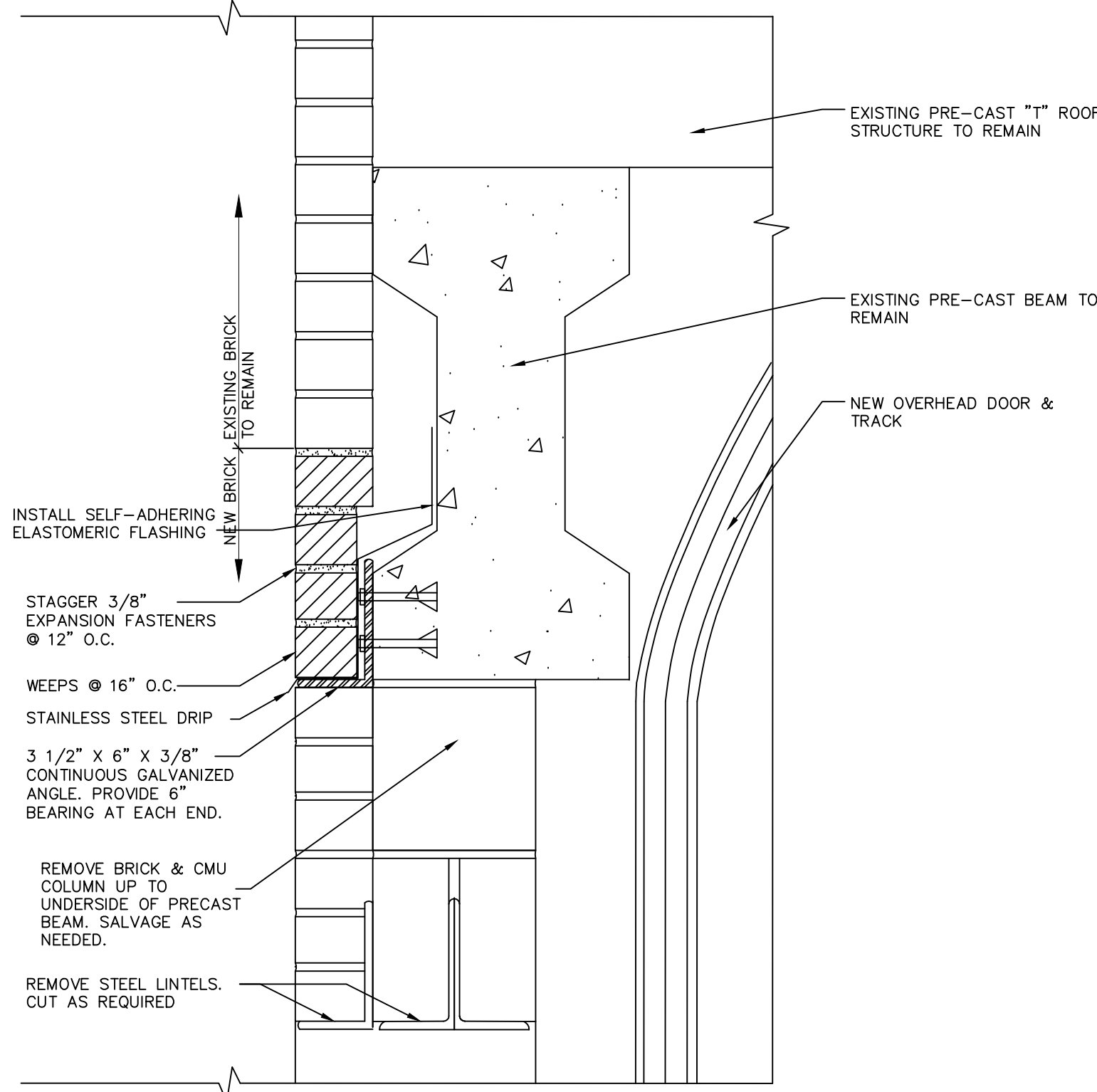
1. REMOVE AND DISPOSE OF EXISTING DOORS, MECHANISMS, AND HARDWARE.
2. DISCONNECT, REMOVE AND DISPOSE OF DEVICES, CONDUIT, AND OTHER PER COR'S INSTRUCTION RELATED TO THE COLUMNPOST DEMOLITION NOT SHOWN ON THE DRAWINGS THAT ARE NOT DIRECTLY RELATED TO THE DOORS AND SERVICES TO THE GARAGE.
3. RELOCATE EXHAUST COLLECTION DEVICE TO ALLOW NEW DOOR INSTALLATION & ACTIVATION. VERIFY DEVICE IS IN FULL FUNCTIONING ORDER WITH NO LEAKS WITHIN EXHAUST CONDUITS AFTER RELOCATION.
4. GARAGE AND FIRE DEPARTMENT DUTIES MUST NOT BE DISRUPTED DURING CONSTRUCTION. IF PARTIAL BLOCKAGE OF ADJACENT GARAGE ENTRANCES ARE REQUIRED DURING THE CONSTRUCTION, NOTIFY THE COR FOR COORDINATION AT LEAST 48 HRS IN ADVANCE.
5. REFER TO 2/A-1 FOR DEMO ELEVATION. REFER TO 3/A-1 FOR EXTENT OF COLUMN DEMO.



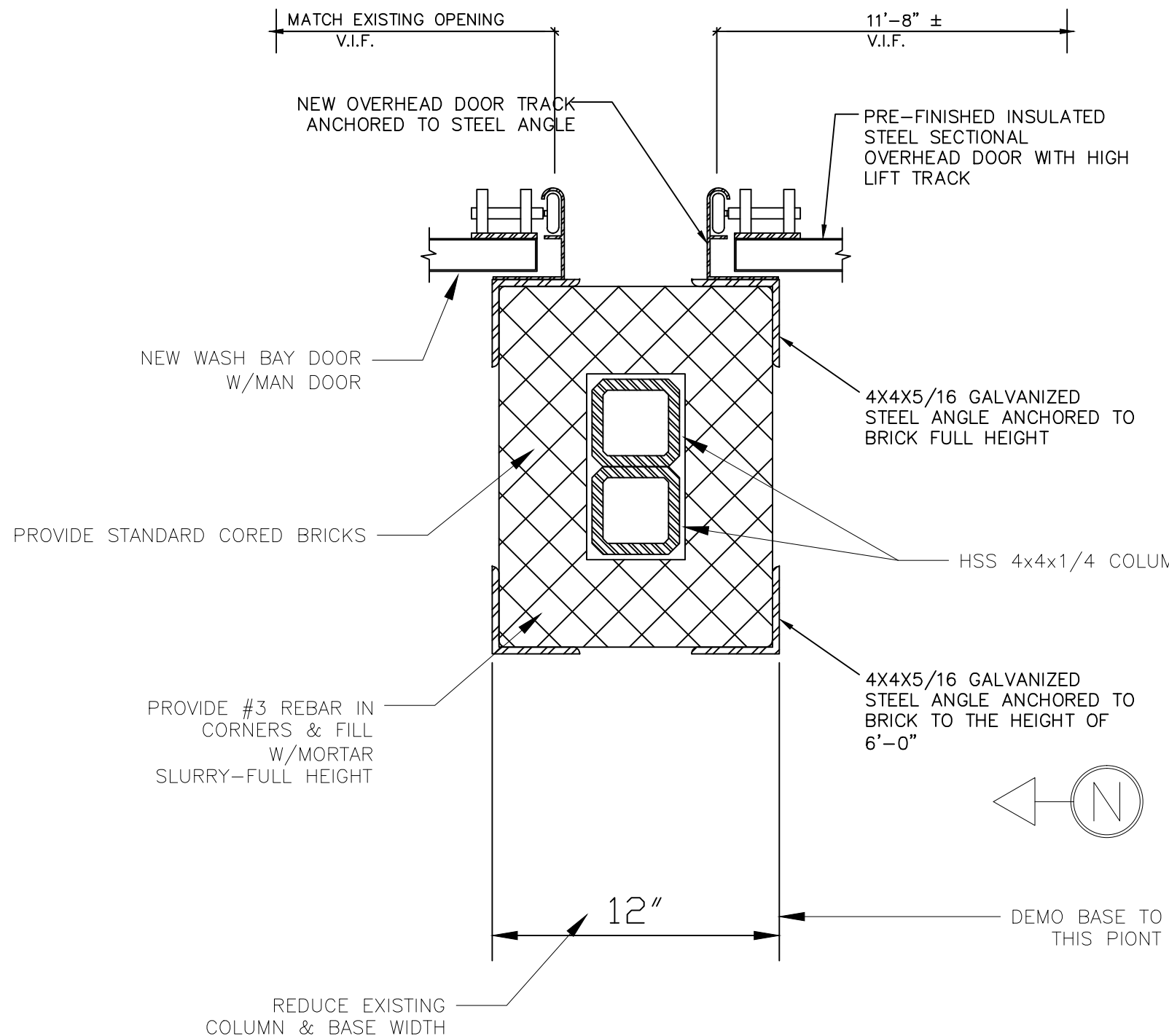
5 PARTIAL DETAIL OF B-14 GARAGE AREA-INSTALLATION  
SCALE: 1/4"=1'

NOTES

1. PROVIDE NEW OVERHEAD DOORS, MECHANICAL OPENING DEVICES, AND OPENER CONTROLS AS SPECIFIED.
2. REFER TO 3/A-1 FOR COLUMN CONSTRUCTION.
3. GARAGE AND FIRE DEPARTMENT DUTIES MUST NOT BE DISRUPTED DURING CONSTRUCTION. IF PARTIAL BLOCKAGE OF ADJACENT GARAGE ENTRANCES ARE REQUIRED DURING THE CONSTRUCTION, NOTIFY THE COR FOR COORDINATION AT LEAST 48 HRS IN ADVANCE.
4. PROVIDE AN EXTERIOR DOOR CONTROL THAT MATCHES OR IS SIMILAR TO THAT OF THE ADJACENT BAY TO THE RIGHT.



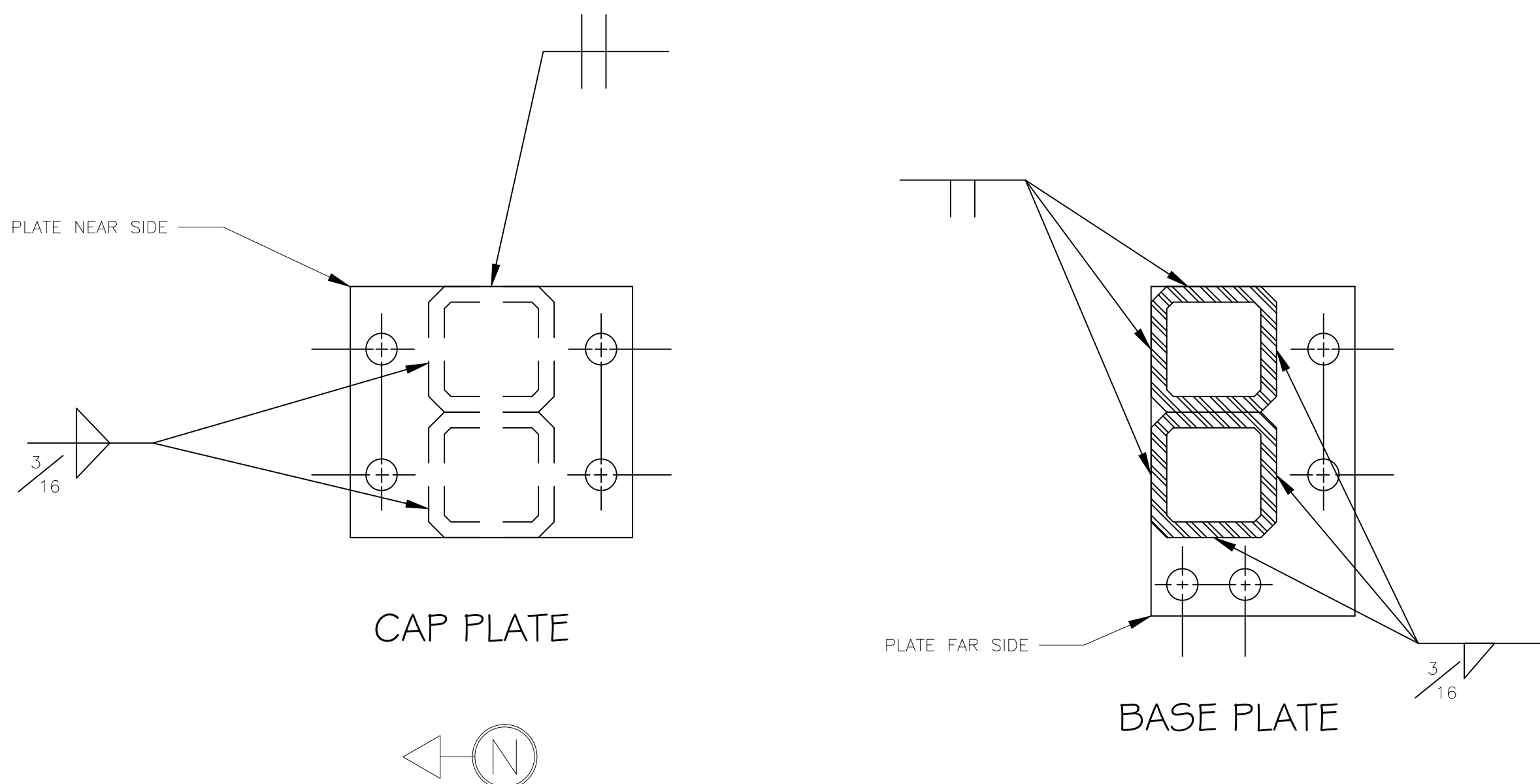
2 OVERHEAD DOOR JAMB DETAIL  
SCALE: NTS



3 OVERHEAD DOOR JAMB DETAIL  
SCALE: NTS

NOTES

1. DEMOLISH EXISTING POST. REBUILD COLUMN USING EXISTING SOUTHERN EDGE OF WASH BAY DOOR FRAME. REDUCE EXISTING CONCRETE BASE WIDTH AND PROVIDE LEVEL SURFACE FOR COLUMN. CONSTRUCT NEW COLUMN USING (2) HSS 4x4x1/4, 3/8\"/>



4 COLUMN PLATES  
SCALE: 3\"/>

NOTES

1. ALL PLATES ARE 1/2\"/>

GENERAL NOTES

THE FOLLOWING GENERAL NOTES ARE APPLICABLE ARCHITECTURAL DRAWINGS:

1. MATERIAL SPECIFICATIONS ARE PROVIDED ON THESE DRAWINGS FOR SPECIFIC MATERIAL REQUIREMENTS.
2. ALL WORK SHALL COMPLY WITH ALL APPLICABLE CODES, STANDARDS AND REGULATIONS, INCLUDING, BUT NOT LIMITED TO STANDARDS, NFPA, AND THE NATIONAL ELECTRIC CODE (NEC).
3. CONSTRUCTION DRAWINGS ARE BASED UPON FIELD SURVEYS AND RECORD DRAWINGS PROVIDED BY THE ARCHITECT/ENGINEER. THE CONTRACTOR SHALL FIELD VERIFY ALL EXISTING CONDITIONS AND DIMENSIONS FOR ALL PROJECT WORK PRIOR TO CONSTRUCTION.
4. DIMENSIONS SHOWN ARE TO FACE OF FINISH WALL TO FACE OF STRUCTURE UNLESS OTHERWISE NOTED. WRITTEN DIMENSIONS SHALL SUPERSEDE SCALED DIMENSIONS IN ALL CASES. **DO NOT SCALE THE DRAWINGS.**
5. PROMPTLY NOTIFY THE OWNER OF ANY DISCREPANCIES IN THE DRAWINGS OR SPECIFICATIONS FOR RESOLUTION PRIOR TO ANY CONSTRUCTION WORK.
6. ALL MEANS AND METHODS OF CONSTRUCTION ARE SOLELY THE RESPONSIBILITY OF THE CONTRACTOR AND SUBCONTRACTORS.
7. THE CONTRACTOR IS RESPONSIBLE FOR MAINTAINING CONSTRUCTION AREA SECURITY DURING CONSTRUCTION.
8. THE CONTRACTOR IS TO PROVIDE DAILY CLEANUP, CONSTRUCTION BARRIERS, NEGATIVE AIR IN CONSTRUCTION AREAS & A DUST SEAL PROGRAM PER SPECIFICATIONS AND FACILITY INFECTION CONTROL STANDARDS.
9. PATCH ALL EXISTING INTERIOR WALLS WHERE REMOVALS HAVE TAKEN PLACE. PATCH TO MATCH EXISTING ADJACENT FINISH. REFER TO DEMOLITION NOTES AND LAYOUTS FOR REMOVALS. A PAINTABLE SMOOTH SURFACE SHALL BE ATTAINED. FINISH PAINT PER SPECIFICATIONS.
10. ANY AND ALL WORK THAT IS NOT DESCRIBED WITHIN THESE DRAWINGS BUT MUST BE COMPLETED AS PART OF A MOVE, RELOCATION, OR INSTALLATION OF NEW SHALL BE PART OF THIS CONTRACT AND TO BE REFERRED AS "REQUIRED WORK".

Revisions	Date

Drawing Title	Project Title	Date	A.V.
LAYOUT & DETAILS	CONVERT OVERHEAD DOORS B-14	06-19-13	
Drawing File Number:	Building No.	Project No.	
Approved: Facility Manager	14	528A6-13-630	
Checked	MC	Drawn	A-1
SDP			
Approved: Medical Center Director	Location	Dwg. 2 Of 2	
	BATH, NEW YORK		