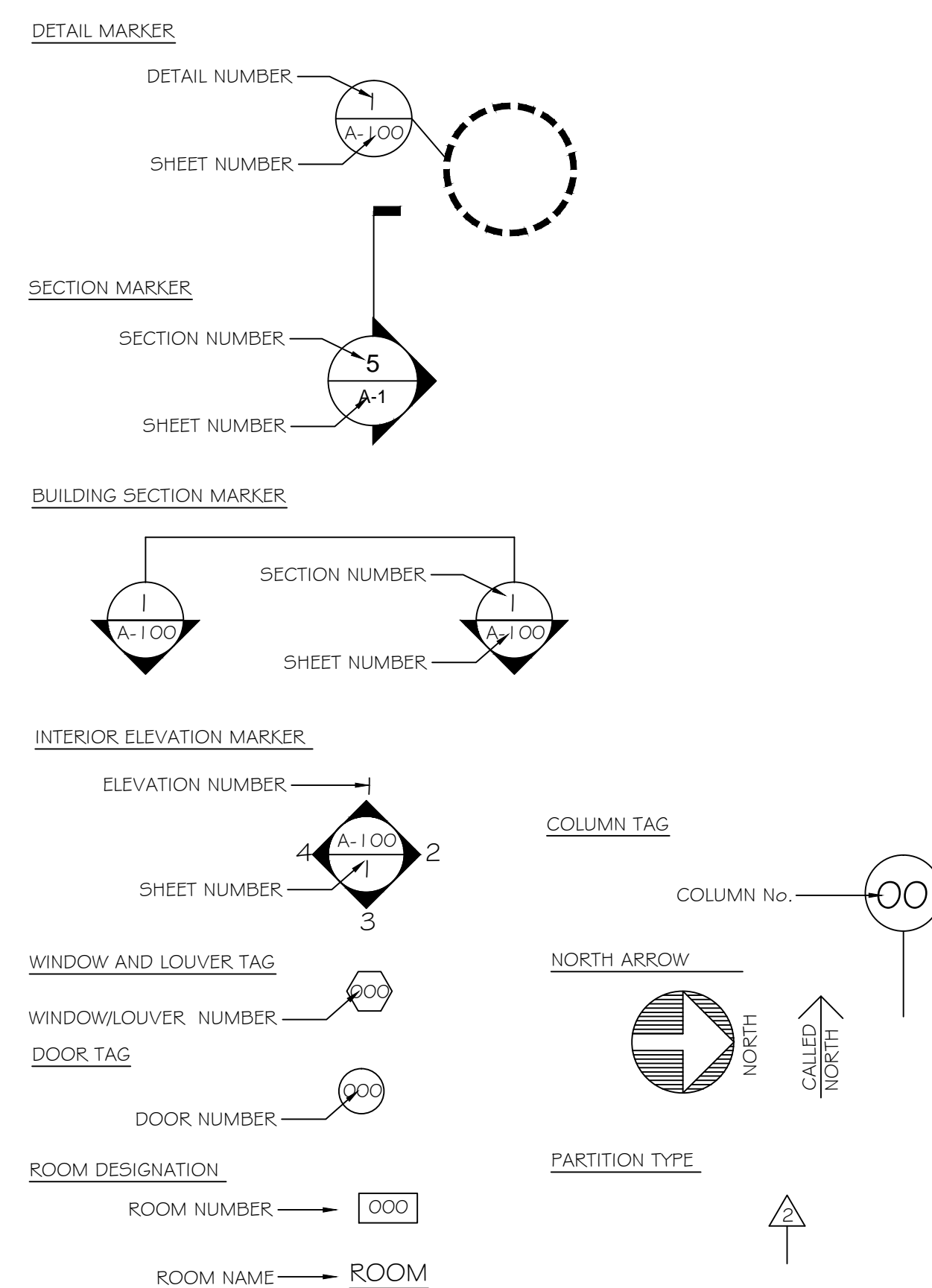


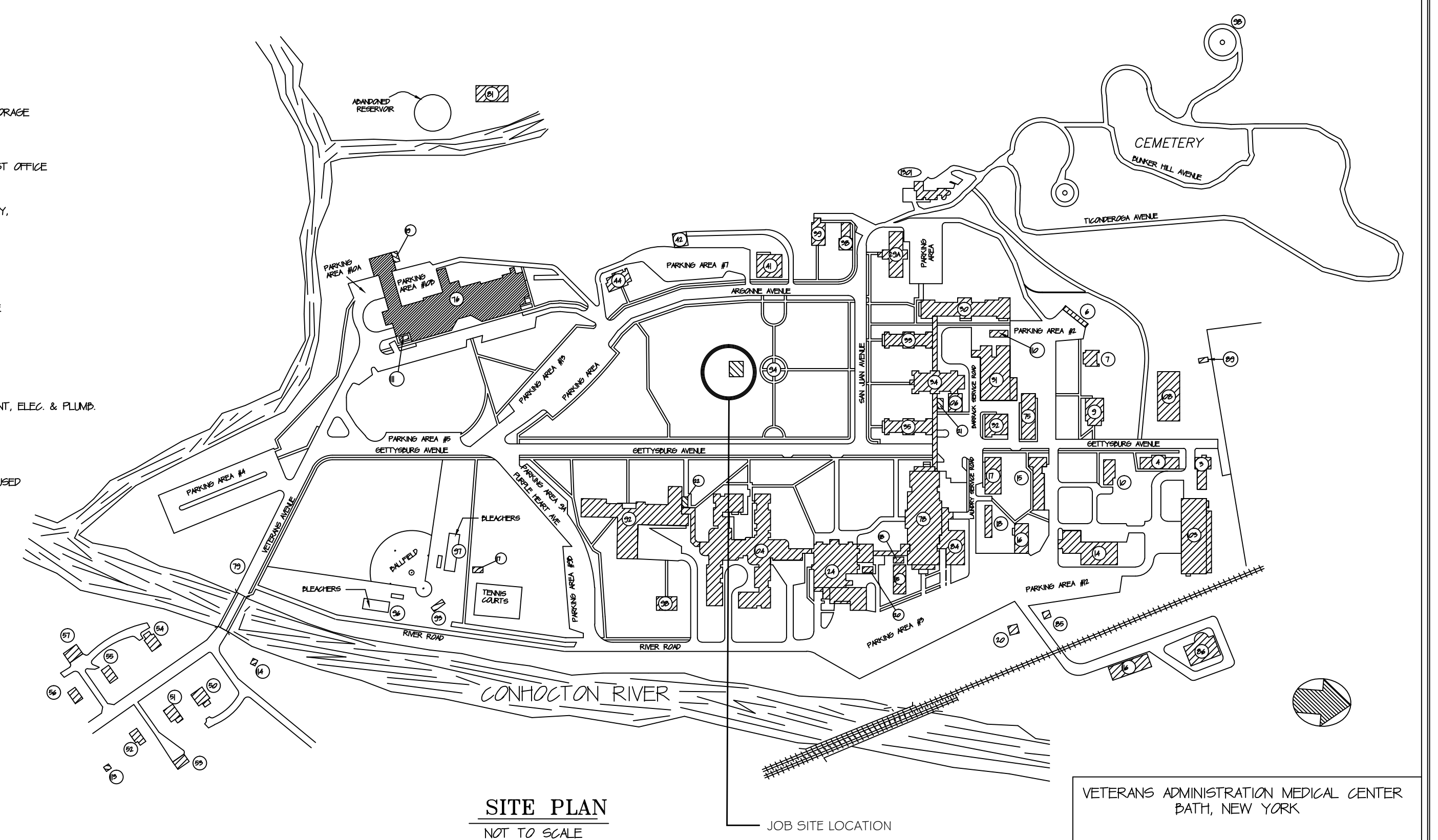
V.A. MEDICAL CENTER
BATH, NEW YORK 14810

<u>DRAWING NO.</u>	<u>SYMBOL</u>	<u>SHEET</u>	<u>TITLE</u>
VAMC-528AG-1757	T-1	1 OF 3	COVER SHEET
VAMC-528AG-1757	A-1	2 OF 3	PLANS, DETAILS & GENERAL NOTES
VAMC-528AG-1757	A-2	3 OF 3	SECTIONS, DETAILS & NOTES

AB	ANCHOR BOLT	EA	EACH
AC	AIR CONDITIONING	EAL	ELEVATION
ACT	ACOUSTICAL CEILING TILE	ELEC	ELECTRIC
ADDL	ADDITIONAL	ELEV	ELEVATION
ADJ	ADJUSTABLE	EQ	EQUAL
AFF	ABOVE FINISH FLOOR	EQ	EACH WAY
AL	ALTERNATE	EXT	EXTERIOR
AL	ALUMINUM	EXG	EXISTING
ARCH	ARCHITECTURAL		
ASPH	ASPHALT	FBLG	FIBERGLASS
		FD	FLOOR DRAIN
B/	BOTTOM of	FFE	FINISH FLOOR ELEVATION
BD	BOARD	FIN	FIN
BL	BUILDING LINE	FLR	FLOOR
BLDG	BUILDING	FNDR	FOUNDATION
BLK	BLOCK	FP	FIREPLACE
BLKG	BLOCKING	FR	FAMILY ROOM
BP	BEARING PLATE	FTG	FOOTING
BR	BEEROOM		
BSMT	BASEMENT	GC	GENERAL CONTRACTOR
BTWN	BETWEEN	GL	GLASS
BRG	BRASS	GN	GLUE and NAIL
		GWB	GYPSPUM WALL BOARD
		GP	GYPSPUM
CB	CATCH BASIN		
CC	CENTER TO CENTER	H	HIGH
CCM	CEMENT	HC	HOLLOW CORE
CG	CORNER GUARD	HDR	HEADER
CLG	CONCRETE JOINT or CONTROL JOINT	HDW	HARDWARE
CMU	CONCRETE MASONRY UNIT	HGT	HEIGHT
COL	COLUMN	HM	HOLLOW METAL
COMP	COMPACTED	HRZ	HORIZONTAL
CONC	CONCRETE	HPT	HIGH POINT
CONST	CONSTRUCTION	H.R.	HANDRAIL
CONT	CONTINUOUS	HW	HOT WATER
COORD	COORDINATE	INS	INSULATION
CPT	CARPET	INT	INTERIOR
CR5	COURSE		
CT	CERAMIC TILE	JAN.	JANITORIAL
		JST	JOIST
DBL	DOUBLE	JT	JOINT
DET	DETAIL		
DF	DOUGLAS FIR	K	KITCHEN
DIA	DIAMETER		
DIM	DIMENSION	LF	LINEAR FEET
DTL	DETAIL	LH	LEFT HAND
DTH	DISHWASHER	LOC	LOCATION
DWG	DRAWING	LVL	LAMINATED VENEER LUMBER

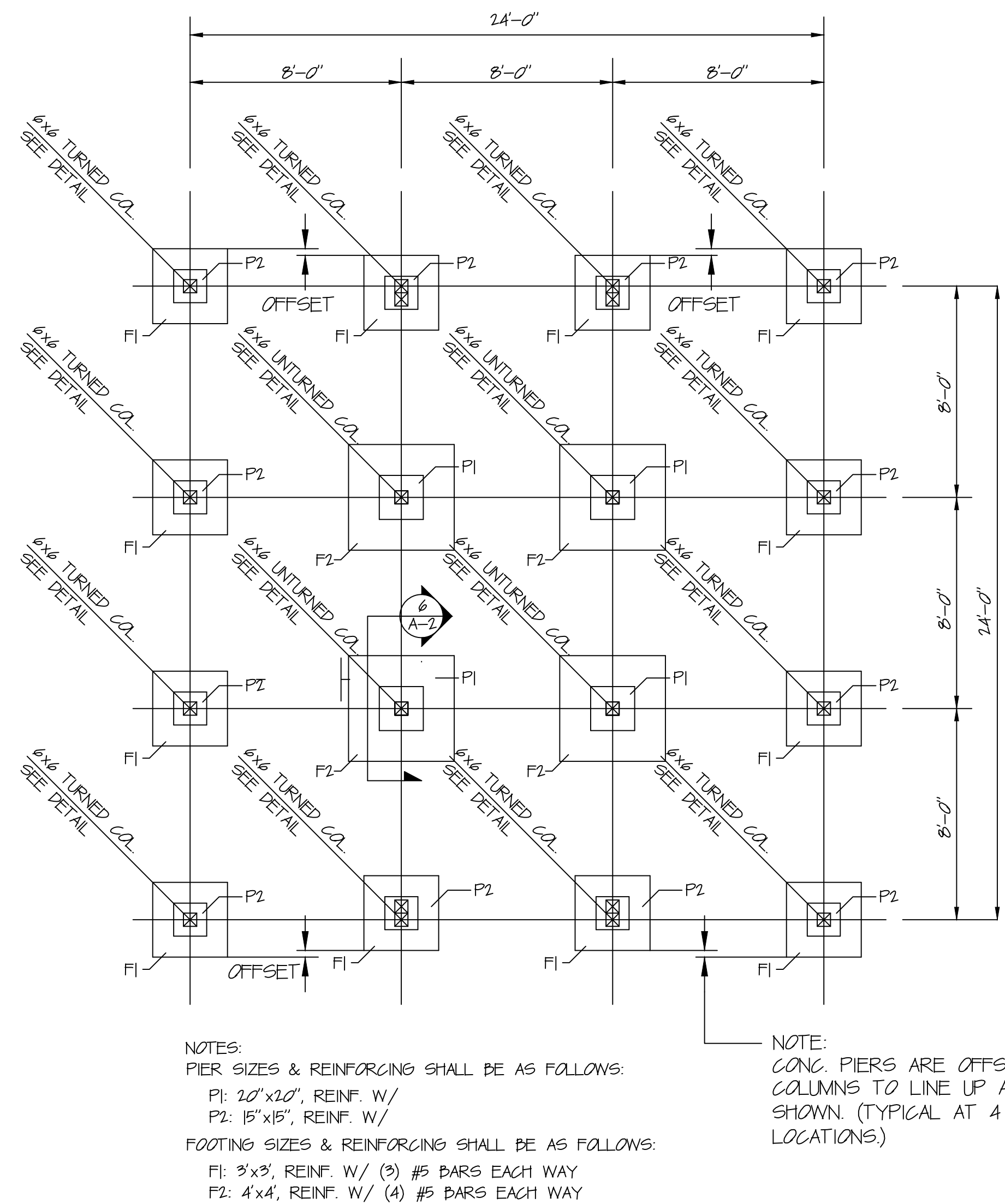
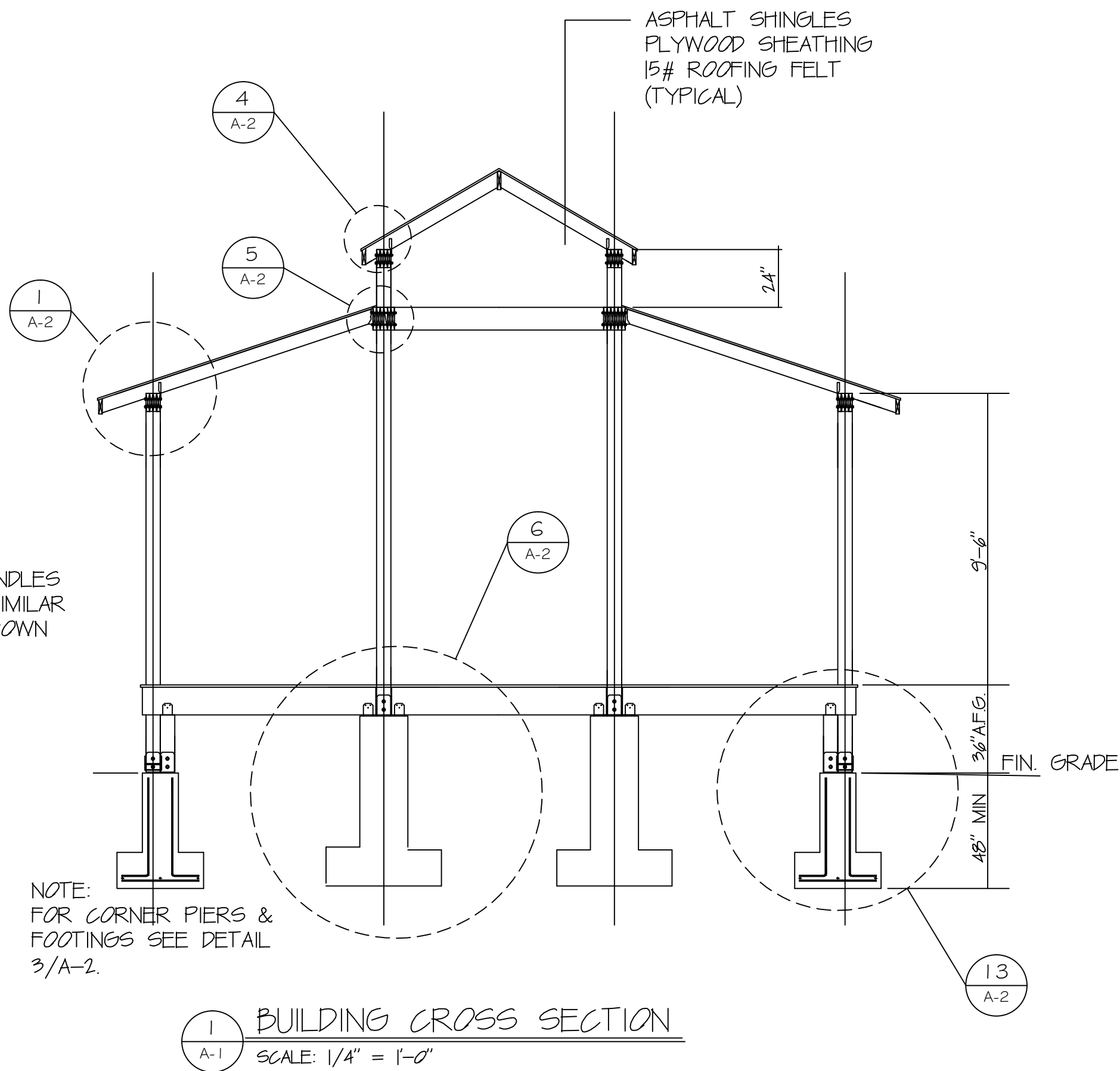
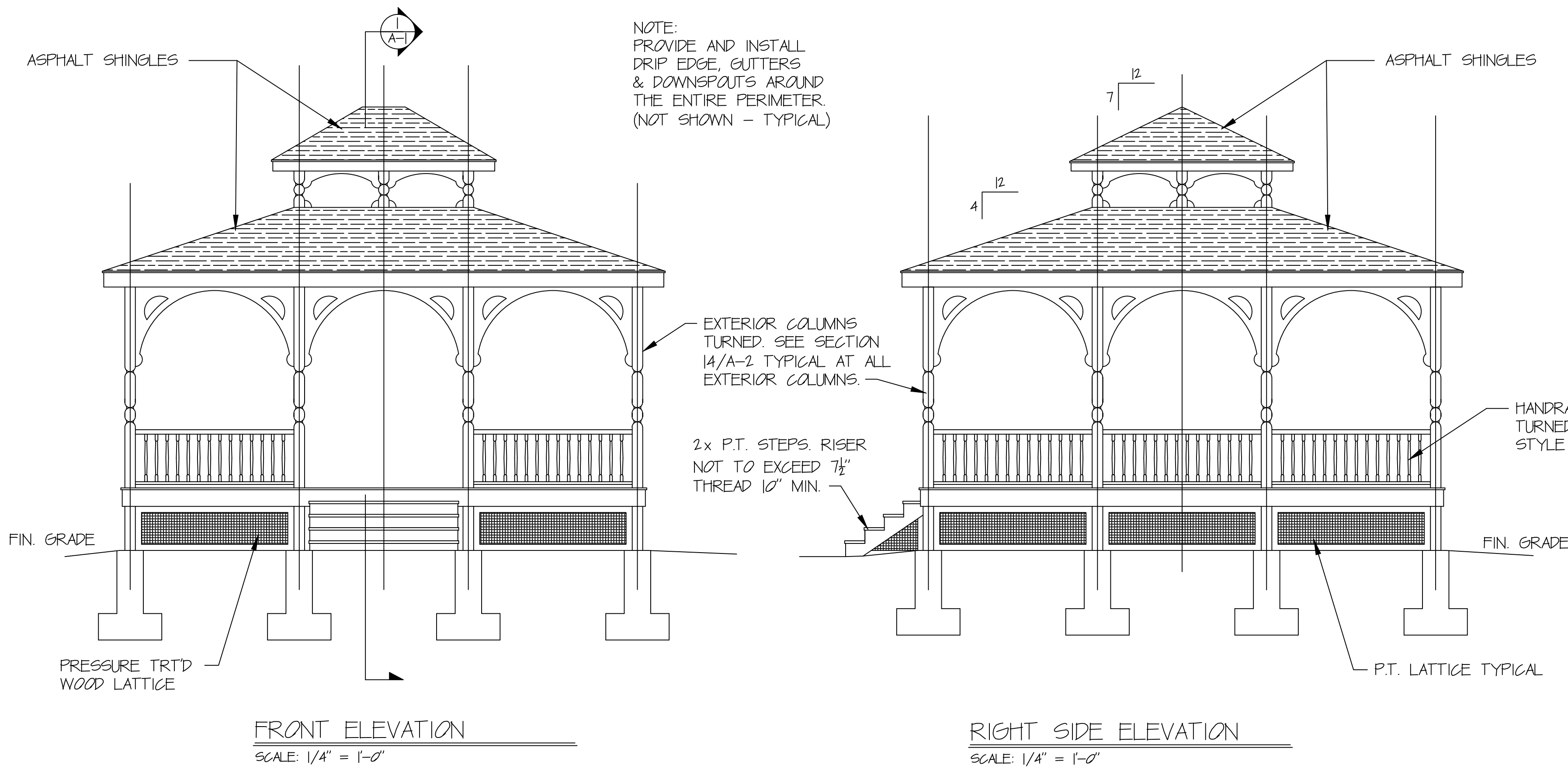


- 3 EQUIPMENT
- 4 LUMBER SHED
- 5 LUMBER SHED
- 6 LUMBER SHED
- 7 TEMPORARY HOUSING
- 8 TEMPORARY OFFICE
- 9 QUARTERS
- 10 FIRE DEPARTMENT & GARAGE
- 11 GARAGES, GEN. REPAIR, MAGAZINE STORAGE
- 12 GARAGE SHOP
- 13 LUMBER SHED
- 14 LUMBER SHED
- 15 GEN. REPAIR & PAINT SHOP
- 16 GEN. REPAIR & PAINT SHOP
- 17 GEN. REPAIR & PAINT SHOP
- 18 SECTION & ADMINISTRATION BUILDING
- 19 POLICE PLANT
- 20 RESEARCHING PSYCHOLOGY, PSYCHOLOGY,
- 21 SOCIAL WORK SERVICE
- 22 SECTION 5
- 23 SECTION 4 - DANGEROUS
- 24 SECTION 4 - DANGEROUS
- 25 CORPUS SERVICE OFFICE
- 26 MAIN CORPUS
- 27 15. SUPPLY, PHYSICAL
- 28 NURSE
- 29 VOLUNTARY SERVICE, STATION POLICE
- 30 QUARTERS
- 31 QUARTERS
- 32 THREE CAR GARAGE
- 33 QUARTERS
- 34 QUARTERS
- 35 QUARTERS
- 36 QUARTERS
- 37 QUARTERS
- 38 QUARTERS
- 39 ENGINEERING SHOP & STORAGE-PANT, ELEC. & PLUMB
- 40 SECTION 1 - NITIGU
- 41 SECTION 1 - NITIGU
- 42 UNDERGROUND RESERVOIR
- 43 UNDERGROUND RESERVOIR
- 44 INFLATOR - NOT USED
- 45 SECTION 1 - NITIGU
- 46 ENGINEERING SHOP & LIBRARY
- 47 ENGINEERING SHOP
- 48 FIELD HOUSE
- 49 FIELD HOUSE - PLANO PLANO
- 50 GEOMETRY PLANO PLANO
- 51 PLANO - EAST
- 52 BLDG. - NORTH
- 53 SOUTH SIDE
- 54 SUPPLY WAREHOUSE
- 55 DOWNGRADE
- 56 CANTIER PLANT
- 57 HEAVY EQUIPMENT STORAGE
- 58 ELEV. STORAGE BUILDING
- 59 ELEV. STORAGE BUILDING
- 60 GAZON
- 61 METER HOUSE
- 62 GAZON HOUSE
- 63 NEW GREENHOUSE
- 64 INFLAND PLANT
- 65 FIELD HOUSE STORAGE
- 66 GREEN FIELD STORAGE
- 67 SHAGG GELTER (AND)
- 68 SHAGG GELTER (AND)
- 69 SHAGG GELTER (AND)
- 70 SHAGG GELTER (AND)
- 71 NATIONAL GELTER (AND)

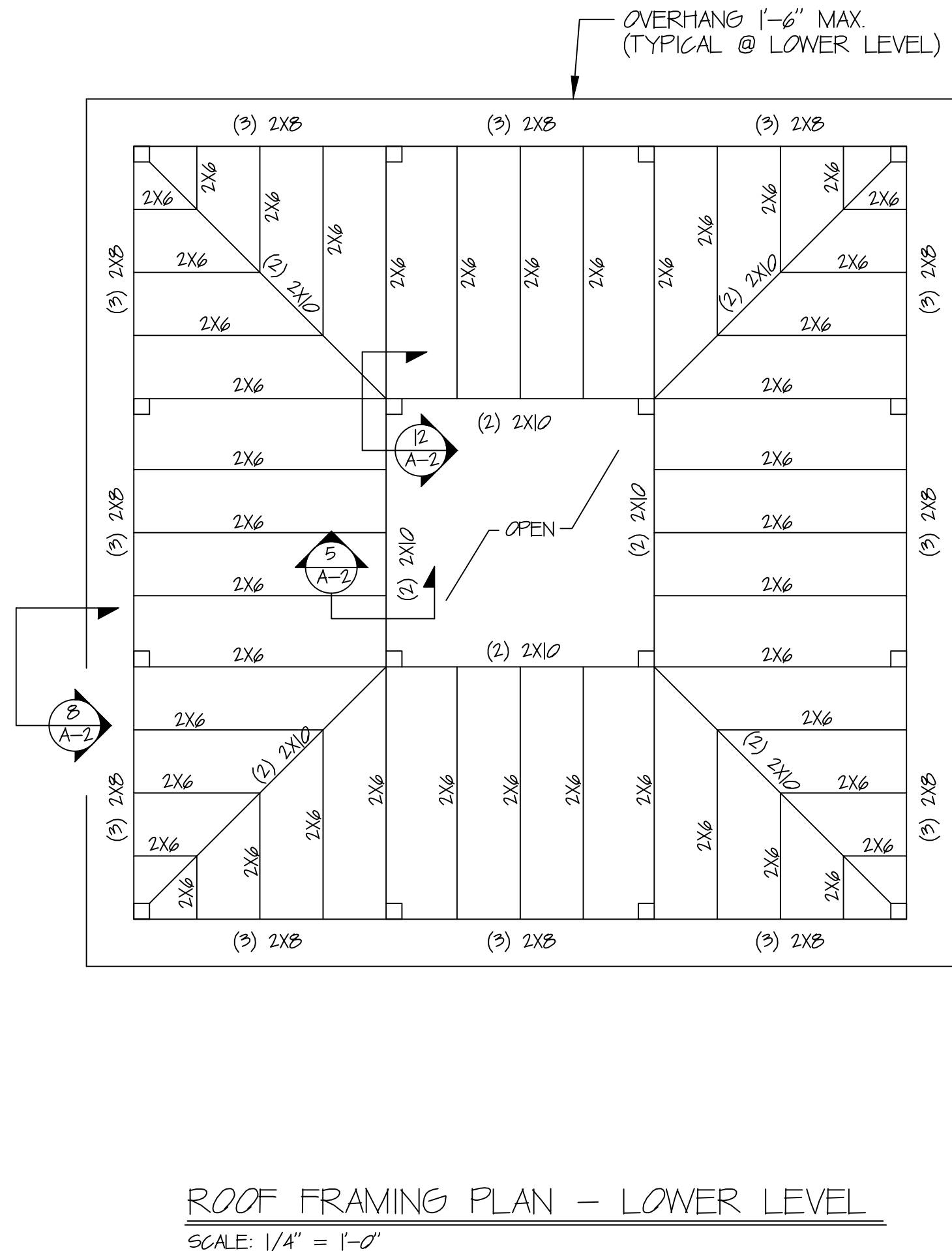
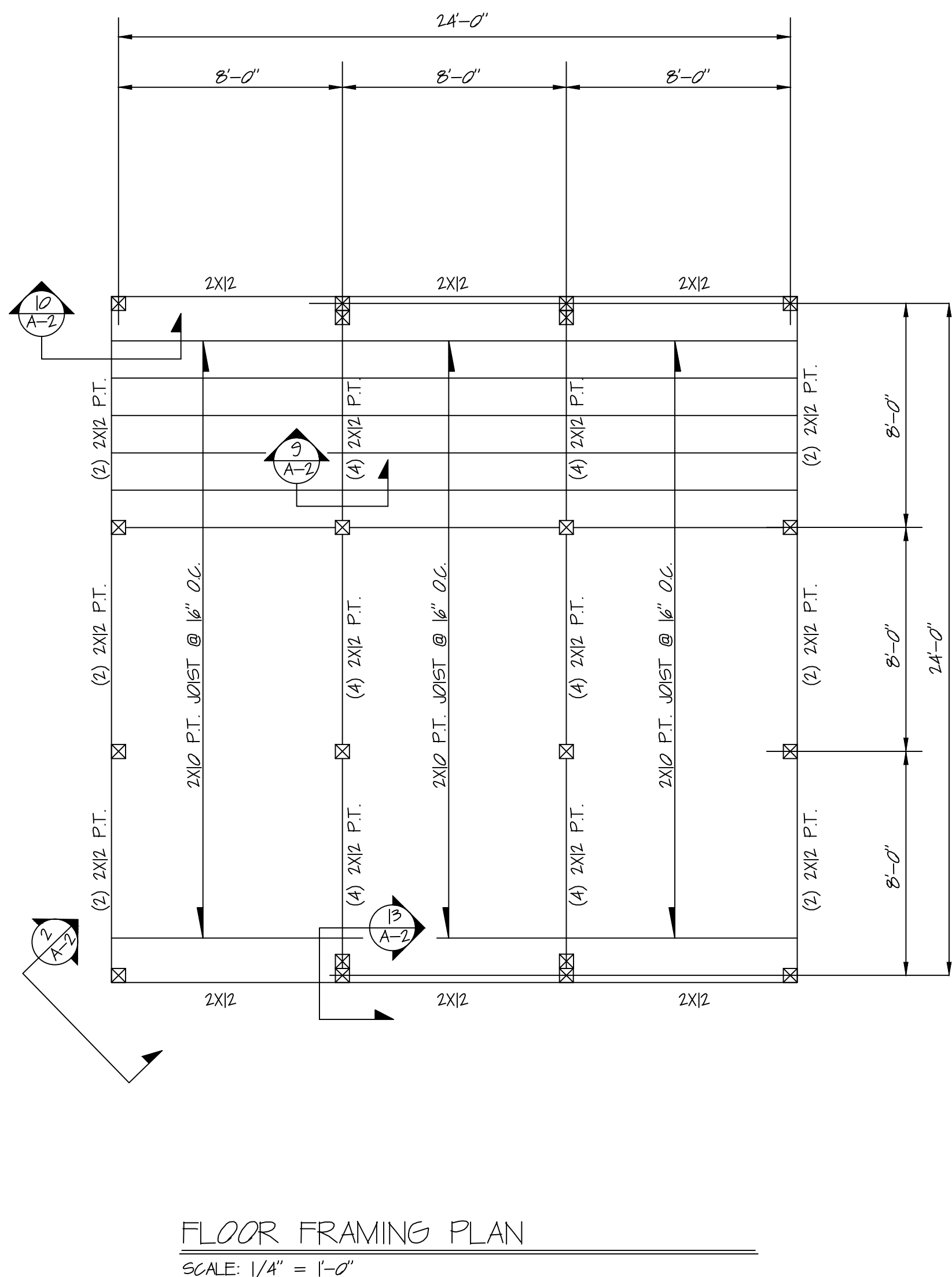
[illegible]

GENERAL CONSTRUCTION NOTES

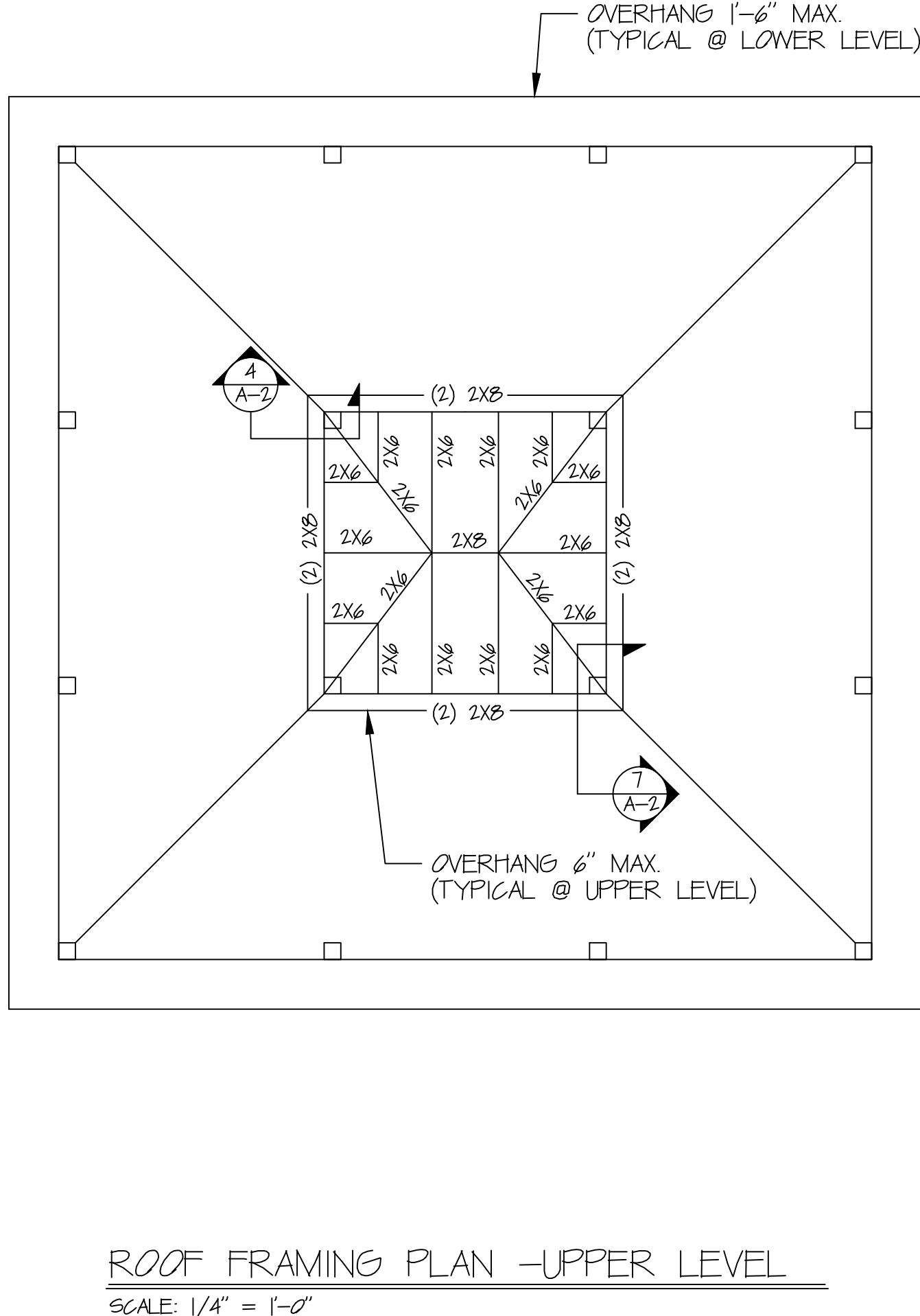
1. THE CONTRACTOR SHALL REVIEW THE CONTRACT DOCUMENTS FOR CONFLICTS. WHERE CONFLICTS EXIST WITHIN THE DRAWINGS, WORK SHALL NOT PROCEED UNTIL THE ENGINEER HAS BEEN NOTIFIED AND GIVEN DIRECTION BY THE PROJECT COR.
2. THE CONTRACT DRAWINGS AND SPECIFICATIONS REPRESENT THE FINISHED STRUCTURE UNLESS OTHERWISE INDICATED. THEY DO NOT SPECIFY METHODS OF CONSTRUCTION. THE CONTRACTOR SHALL TAKE ALL NECESSARY STEPS AND PRECAUTIONS TO MAINTAIN THE STABILITY OF THE STRUCTURE AND PROTECT WORKERS, VA STAFF AND PATIENTS DURING THE CONSTRUCTION. SPECIFIC ITEMS TO BE CONSIDERED SHALL INCLUDE, BUT NOT LIMITED TO THE ADEQUACY OF ALL FORMS, SCAFFOLDING, AND SHORING FOR CONSTRUCTION EQUIPMENT AND THE TEMPORARY LATERAL BRACING OF THE STRUCTURE. REFER TO SPECIFICATIONS SECTION 010610 - SAFETY AND HEALTH REGULATIONS.
3. ALL FRAMING ANCHORS, CLIPS, STRAPS, HANGERS, ETC. REFERENCED ON THE DRAWINGS SHALL BE MANUFACTURED BY SIMPSON STRONG-TIE CO. OR AS APPROVED BY THE VA STRUCTURAL ENGINEER AND RESIST MAX. RATED LOADS.
4. BOLT, LAG SCREW HEADS & NUTS AGAINST WOOD SHALL BEAR AGAINST STANDARD STEEL WASHERS, UNLESS SPECIAL WASHERS ARE INDICATED ON PLANS OR DETAILS.
5. LAG SCREWS SHALL BE THREADED INTO LEAD HOLES BORED AS FOLLOWS: THE LEAD HOLE FOR THE SHANK SHALL BE THE SAME DEPTH & DIAMETER AS THE SHANK. THE LEAD HOLE FOR THE THREADED PORTION SHALL HAVE A DIAMETER EQUAL TO 60-75 PERCENT OF THE SHANK DIAMETER AND A DEPTH EQUAL TO AT LEAST THE LENGTH OF THE THREADED PORTION.
6. WHERE INCIDENTAL WORK IS REQUIRED TO ACCOMPLISH SHOWN ON THE DRAWINGS, THIS WORK IS IMPLIED AND SHALL BE CONSIDERED AS PART OF THE BASE BID.
7. PRIOR TO ANY WORK COMMENCING IN A WORK AREA, THE CONTRACTOR SHALL NOTIFY THE PROJECT COR OF THEIR INTENTION TO WORK IN THE AREA. THE CONTRACTOR SHALL SCHEDULE A WALK THROUGH OF THE AREA WITH THE COR TO VERIFY THE EXISTING CONDITIONS. AFTER CONSTRUCTION IS COMPLETED THE CONTRACTOR SHALL VERIFY WITH THE COR THAT THE AREA IS RETURNED TO ITS ORIGINAL CONDITION BEFORE FINAL APPROVAL IS GRANTED.
8. ALL LOCATIONS / DIMENSIONS ARE APPROXIMATE. CONTRACTOR SHALL BE RESPONSIBLE TO VERIFY LOCATIONS / DIMENSIONS AND EXISTING CONDITIONS IN THE FIELD.
9. CONSTRUCTION & DUST BARRIERS SHALL BE PROVIDED AND INSTALLED BY THE CONTRACTOR AND BE APPROVED BY THE
10. THE CONTRACTOR SHALL ENSURE THAT THE WORK AREA IS CLEAN & SECURE AT THE END OF EACH WORK DAY. ALL TRASH AND DEBRIS SHALL REMOVED DAILY.



COLUMN PLAN
SCALE: 1/4" = 1'-0"



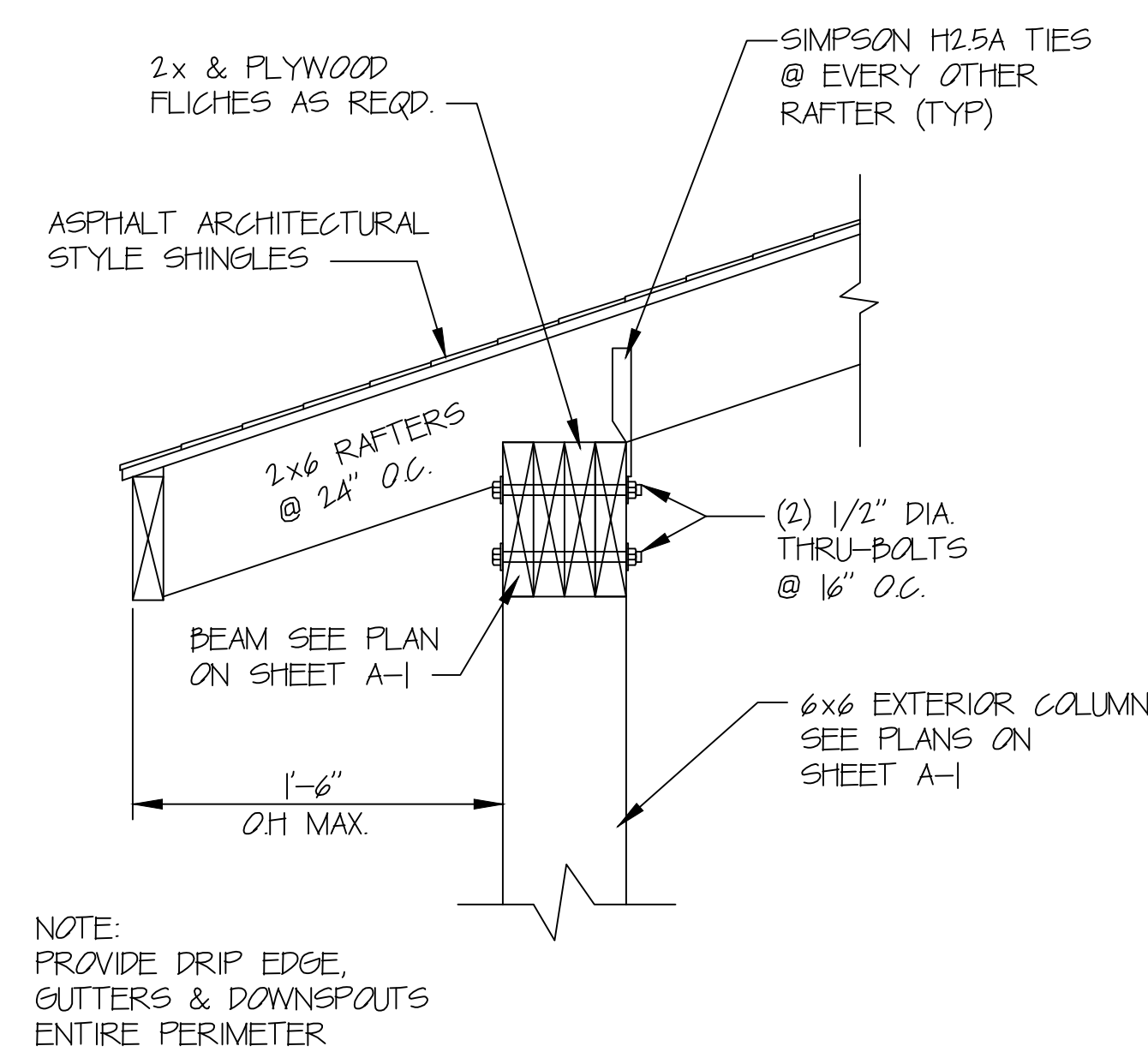
ROOF FRAMING PLAN - LOWER LEVEL
SCALE: 1/4" = 1'-0"



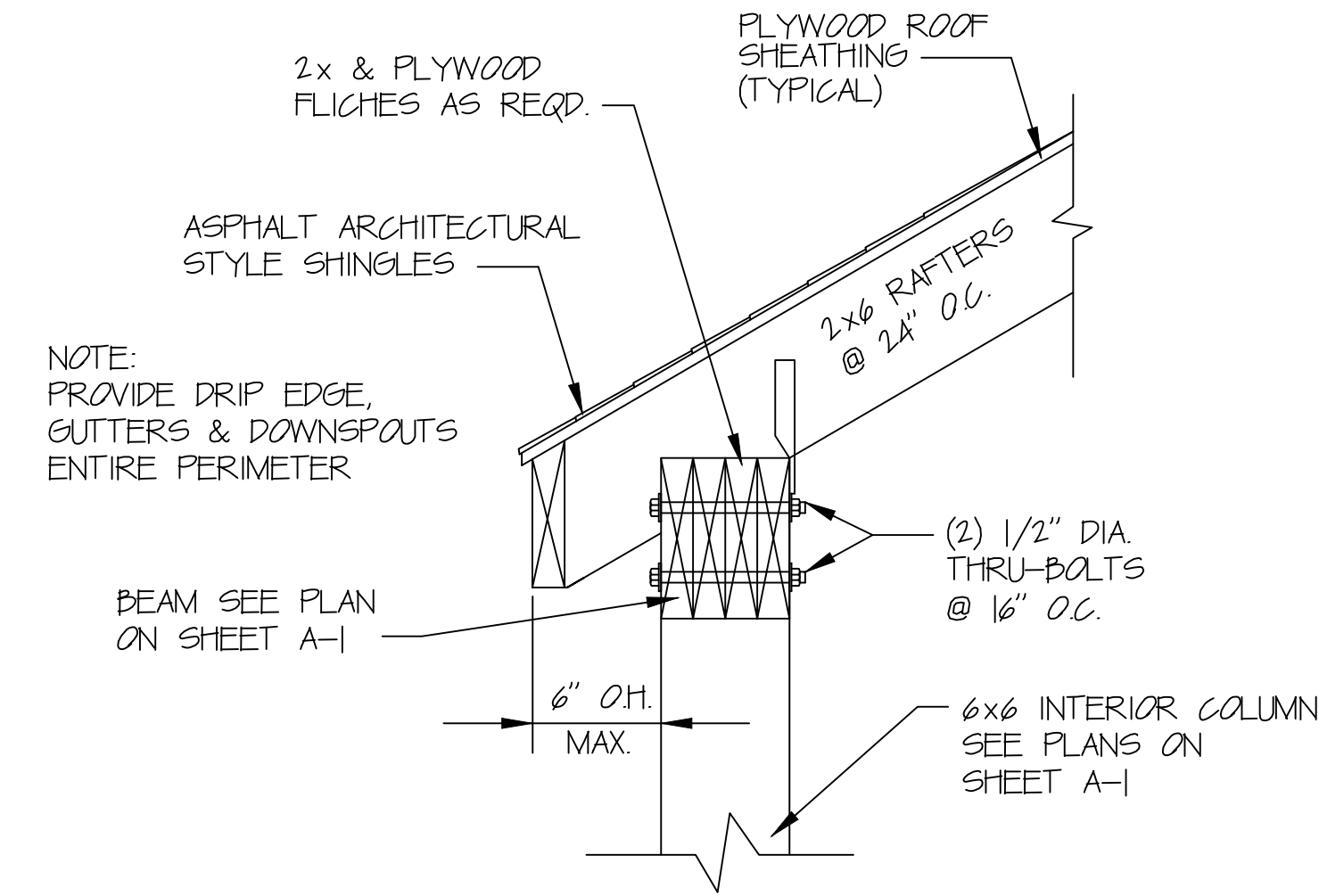
ROOF FRAMING PLAN -UPPER LEVEL
SCALE: 1/4" = 1'-0"

Revisions	Date

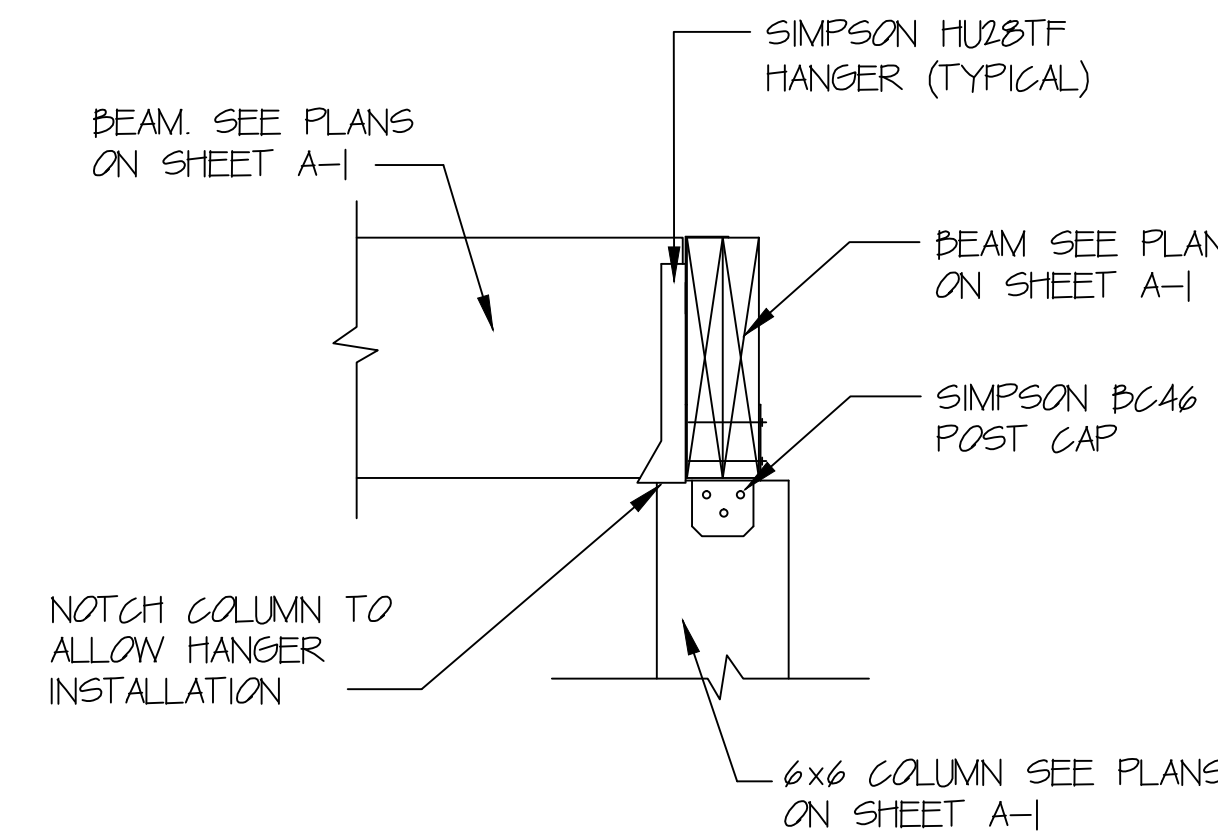
Drawing Title FLOOR PLANS & GENERAL NOTES	Project Title RE-BUILD GAZEBO	Date 05/29/2013
Approved: Engineering Project Manager Date	Building No. 112	Checked JAY
Approved: Medical Center Director Date	Location BATH, NEW YORK	Drawn JHH
		DRAWING NO. VAMC-528A6-1757
		A-1
		Dwg. 2 Of 3



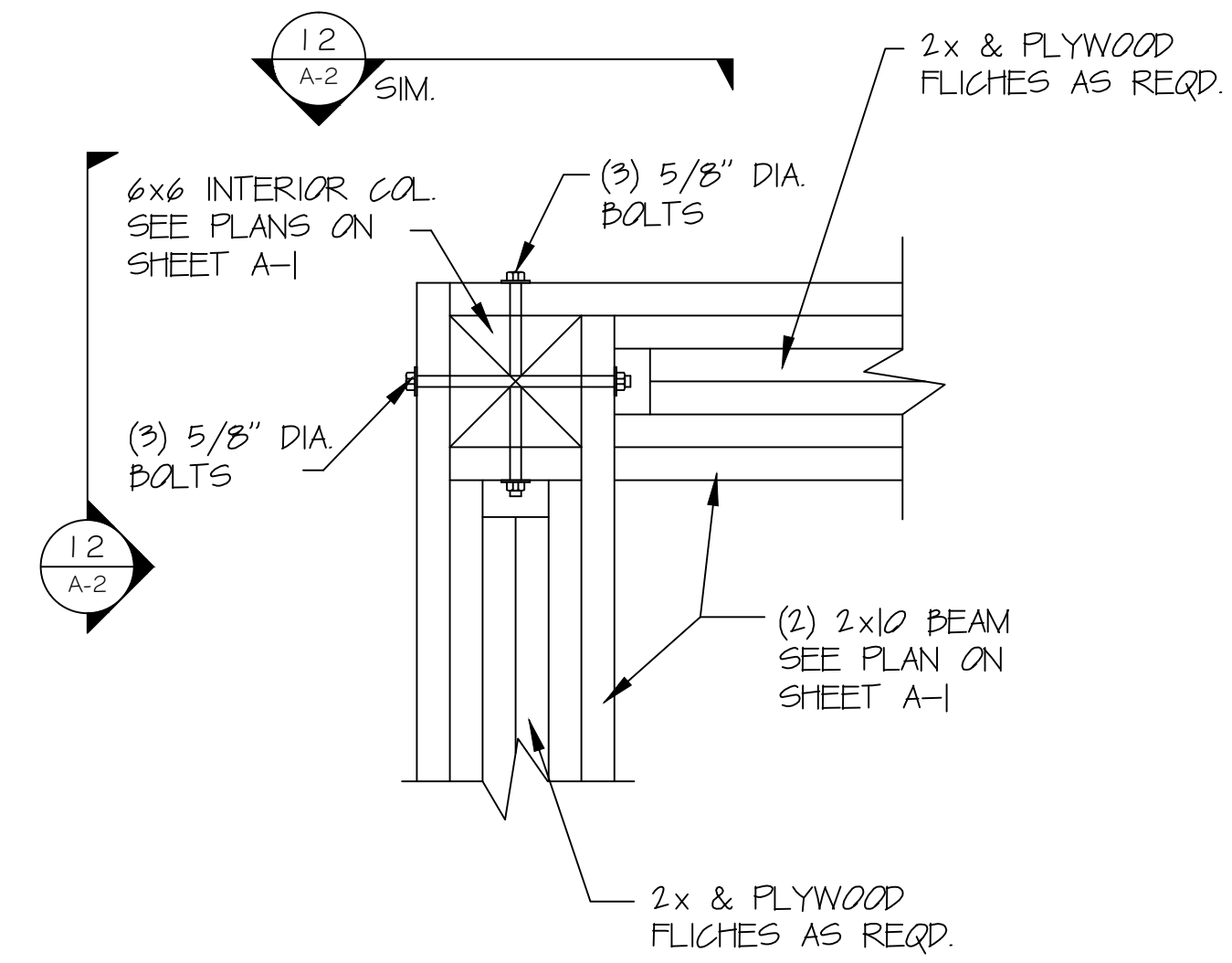
1 RAFTER BEARING DETAIL - LOWER
A-2 SCALE: N.T.S.



4 RAFTER BEARING DETAIL UPPER
A-2 SCALE: N.T.S.

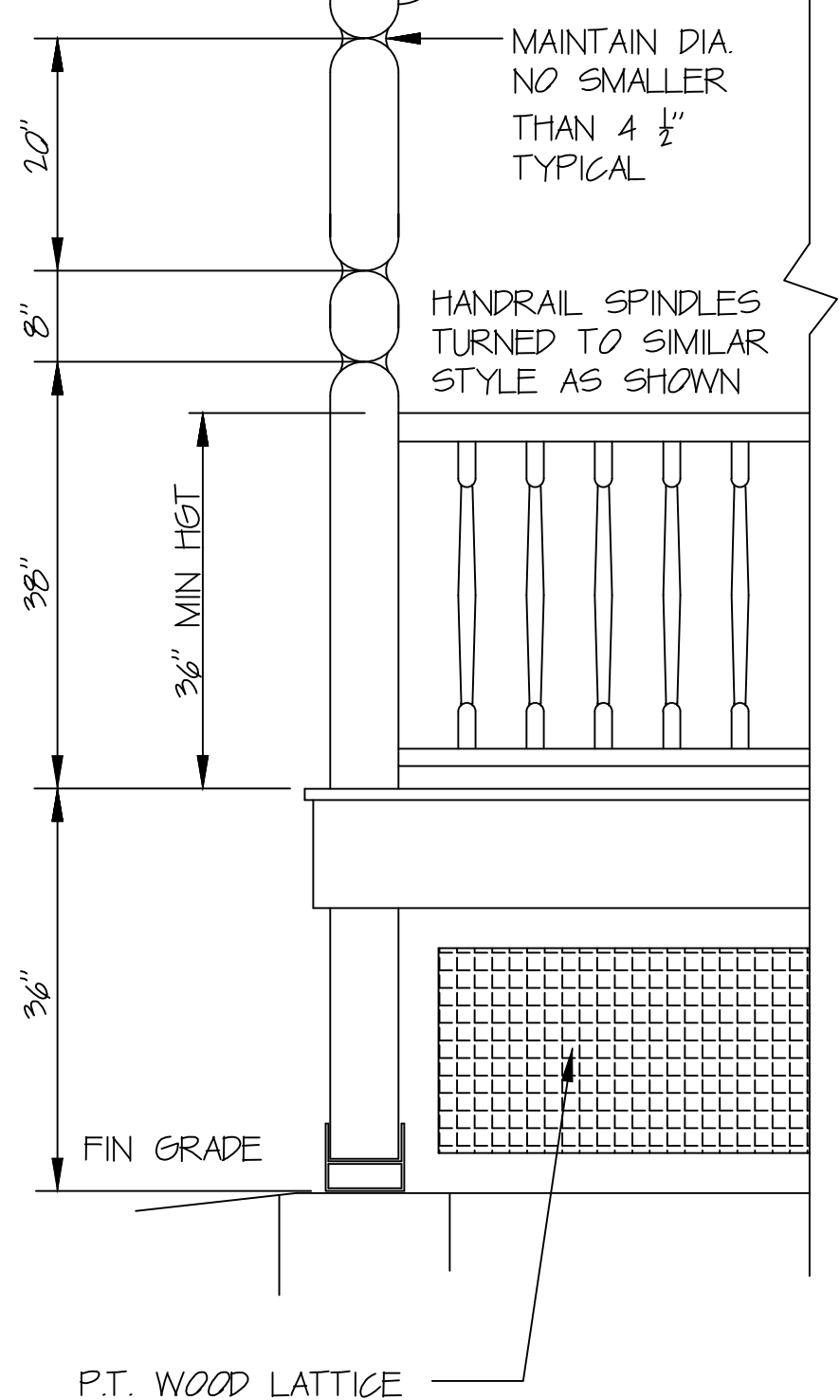


7 COL. CONNECTOR DETAIL AT UPPER ROOF
A-2 SCALE: N.T.S.

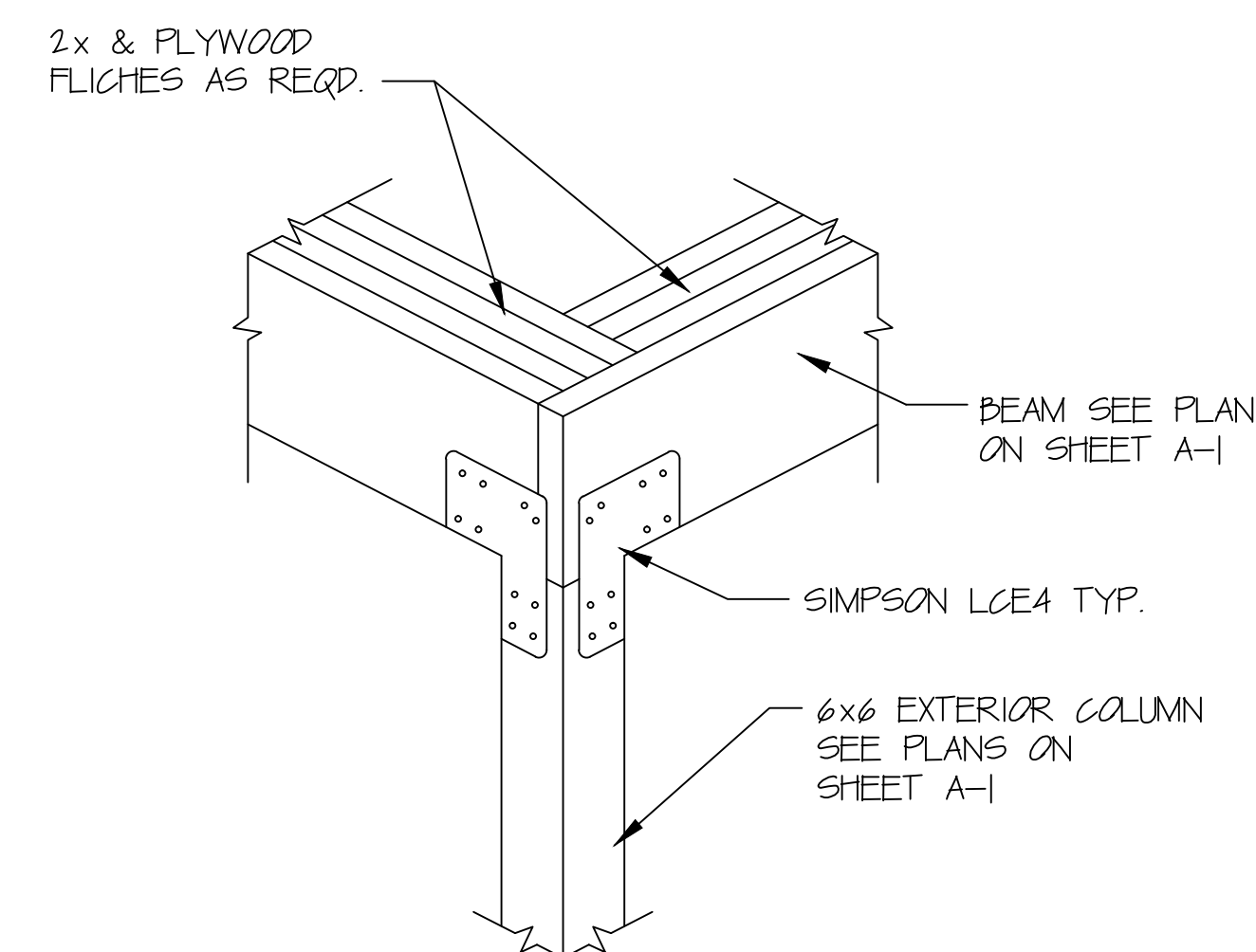


11 BEAM - COLUMN CONNECTION
A-2 SCALE: N.T.S.

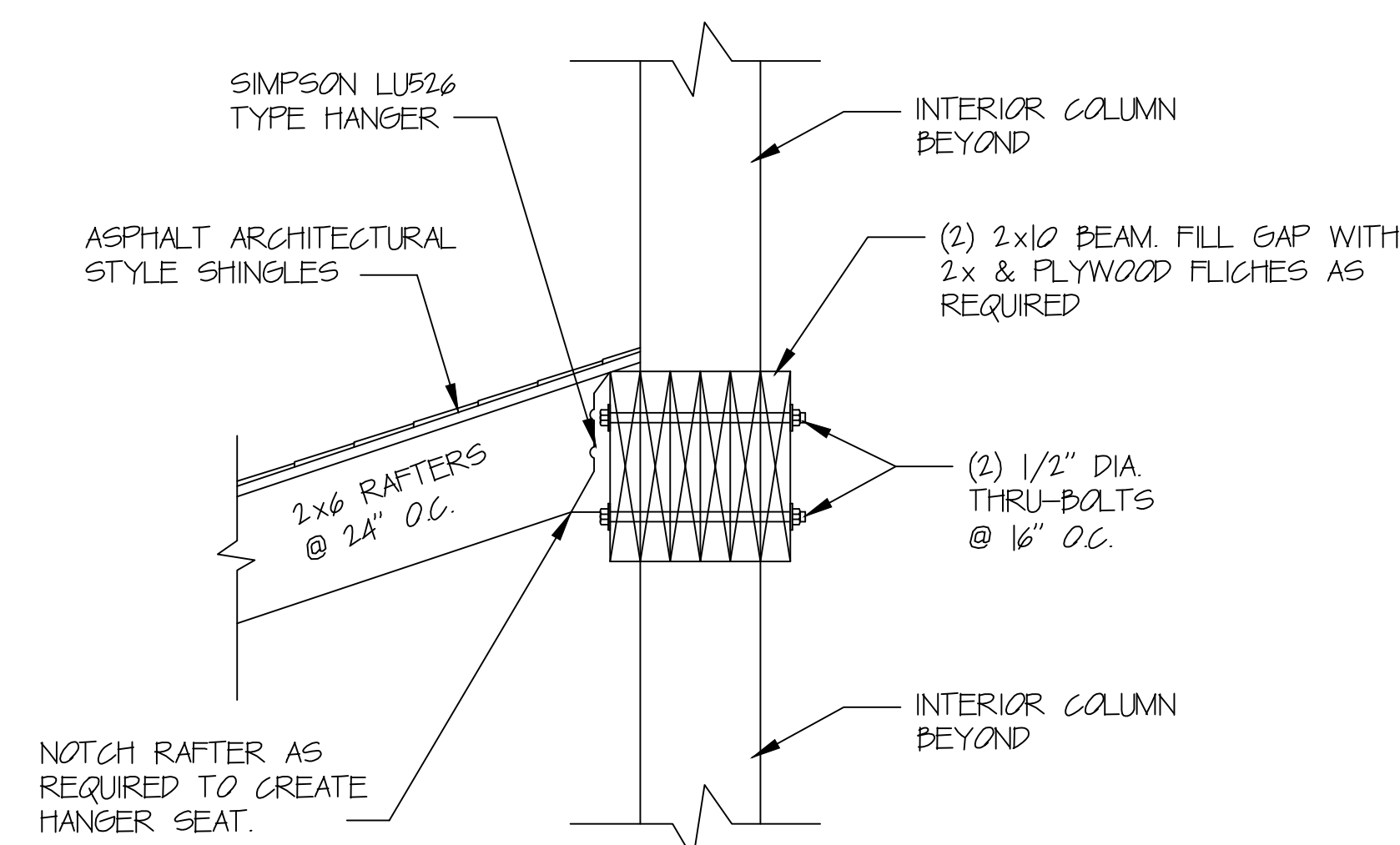
NOTE: CORBELS TO BE SIMILAR STYLE AS SHOWN. PROVIDE DETAILED SHOP DRAWING FOR APPROVAL.



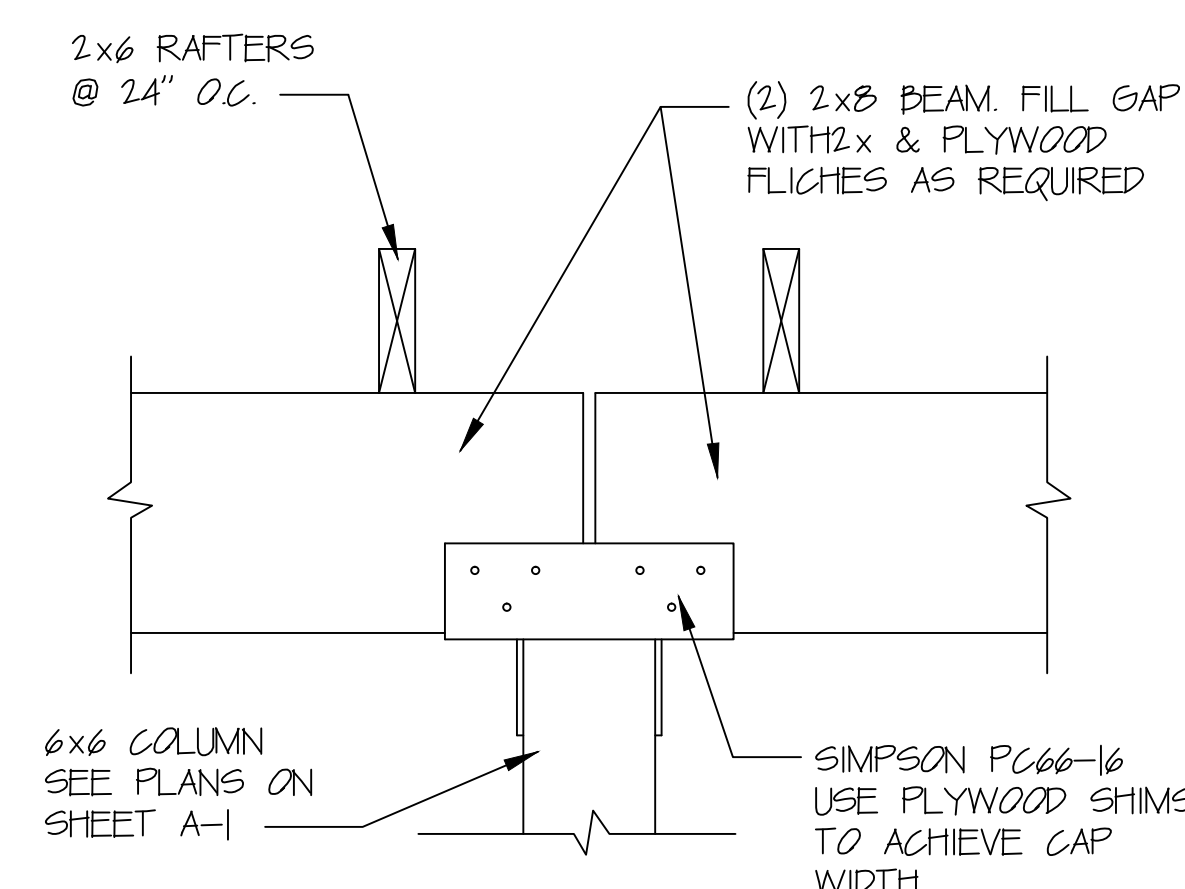
14 COLUMN DETAIL
A-2 SCALE: N.T.S.



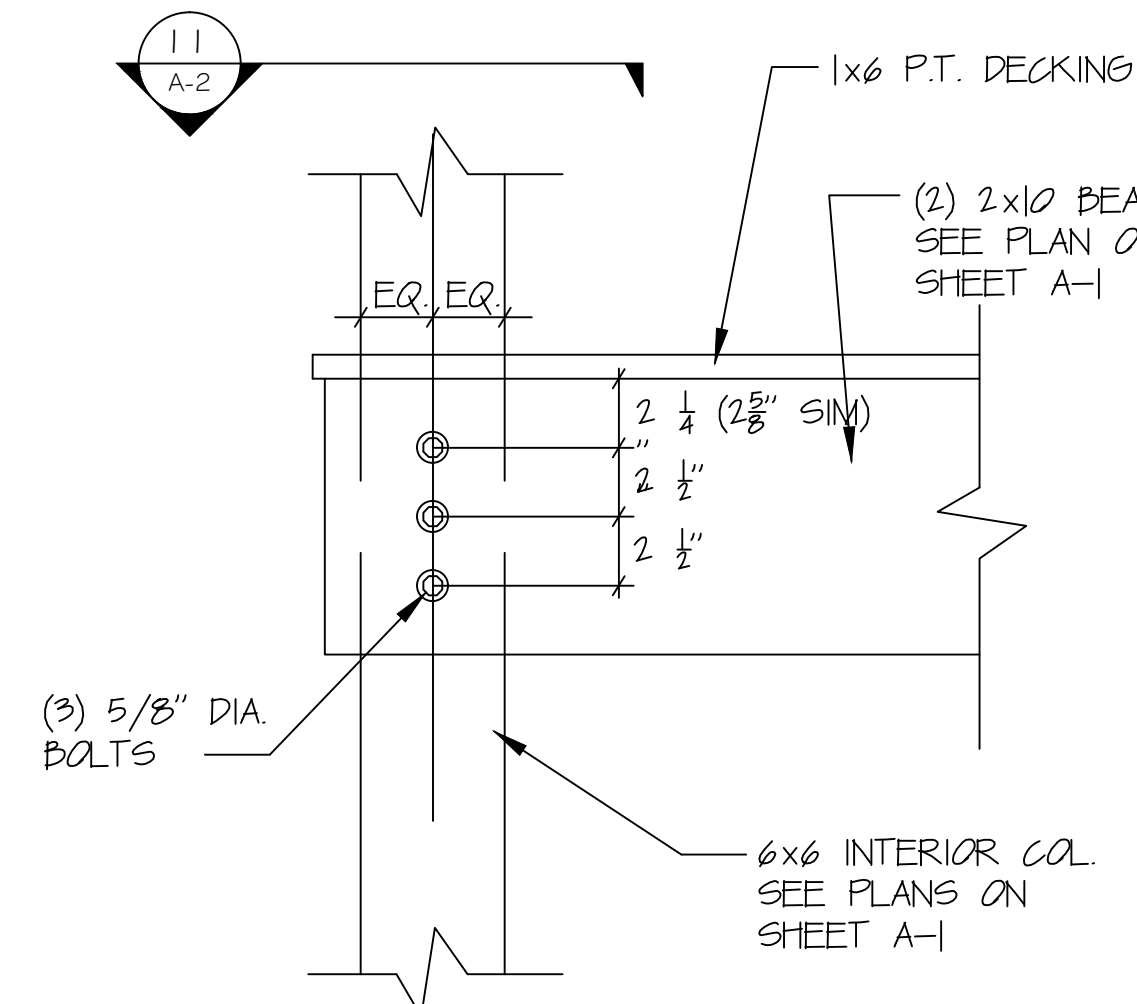
2 COL CONNECTION AT CORNERS, LOWER ROOF
A-2 SCALE: N.T.S.



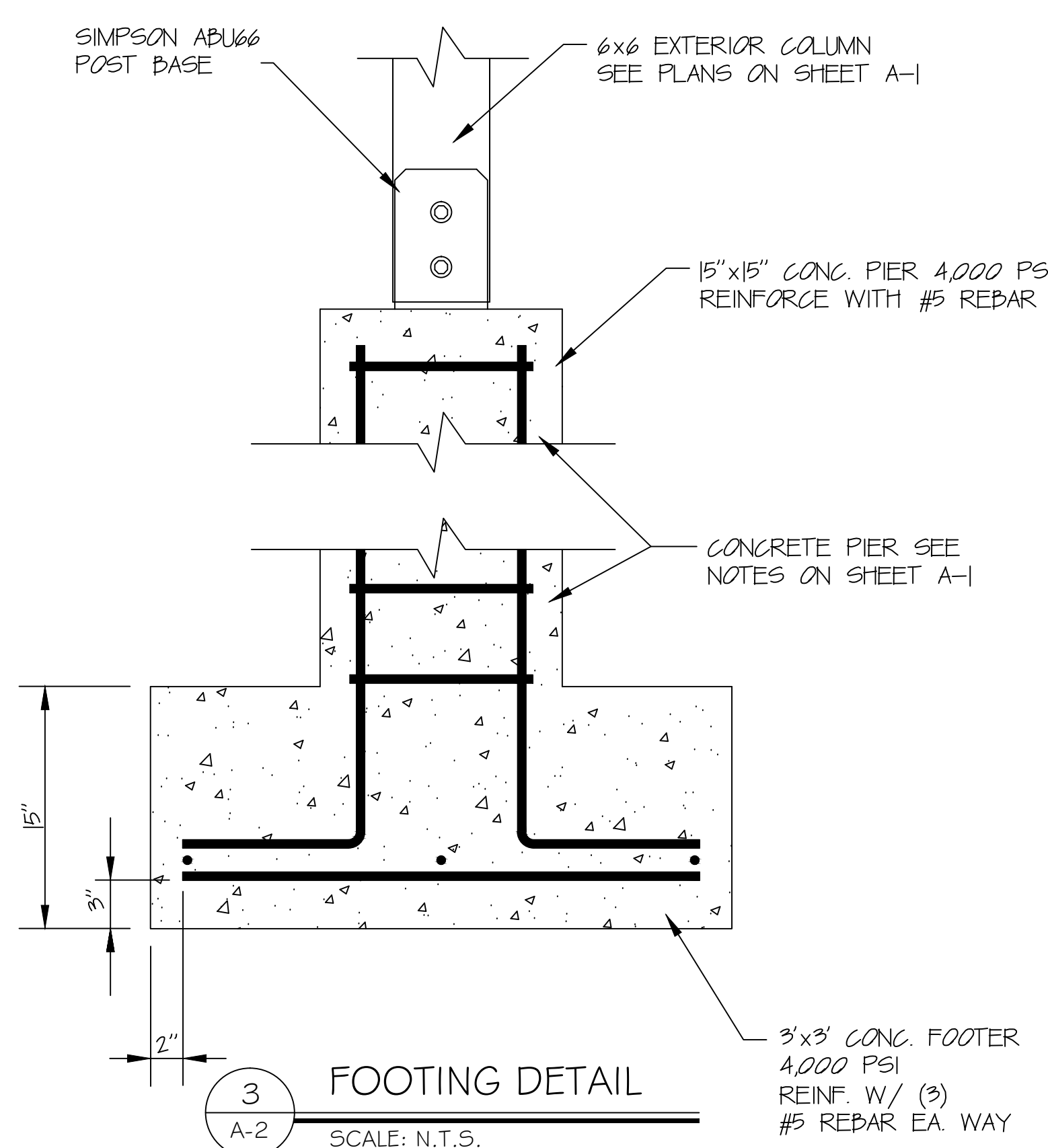
5 RAFTER - COLUMN CONNECTION
A-2 SCALE: N.T.S.



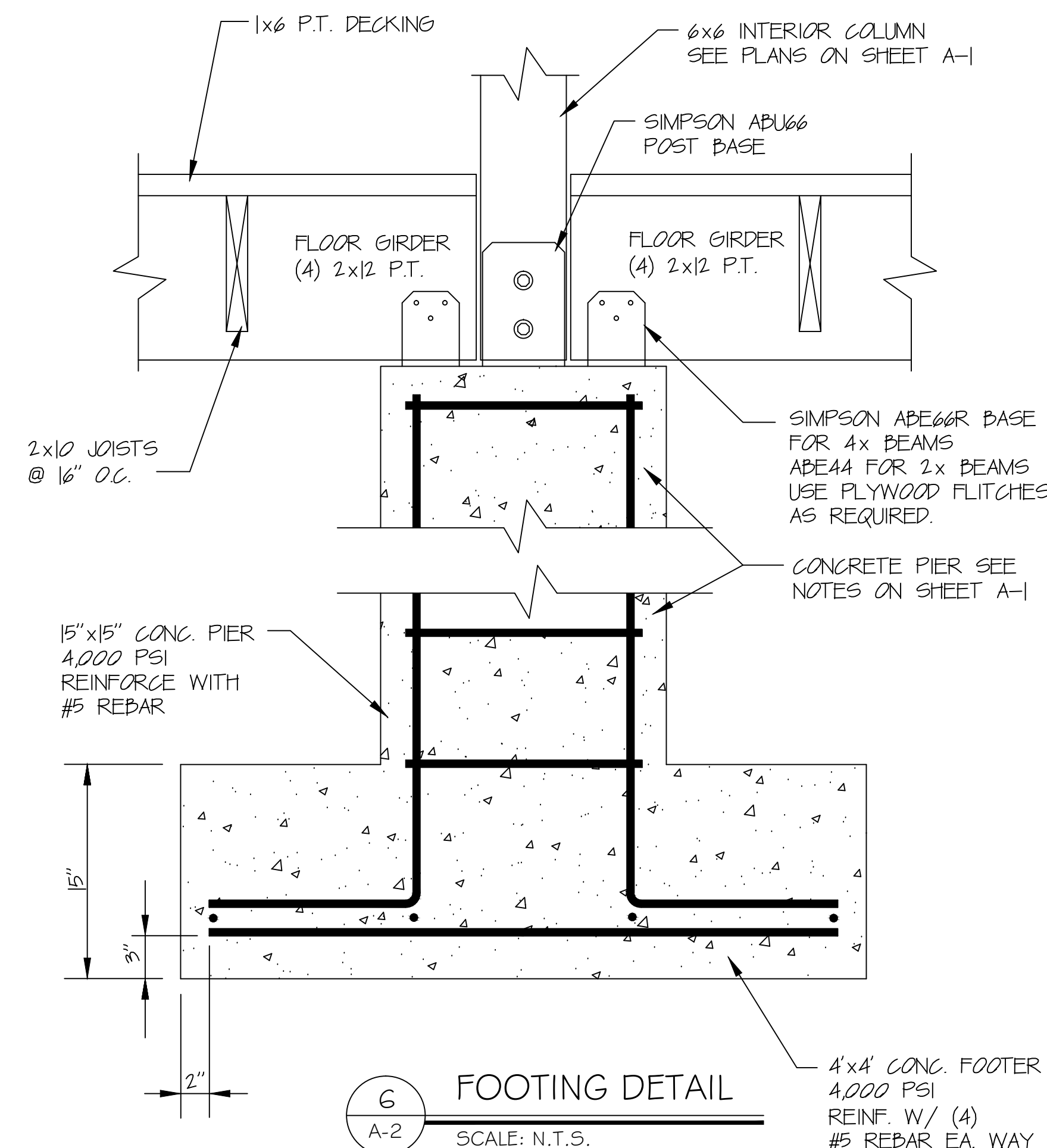
8 COL. CONNECTOR DETAIL EXTERIOR COLUMNS TO ROOF
A-2 SCALE: N.T.S.



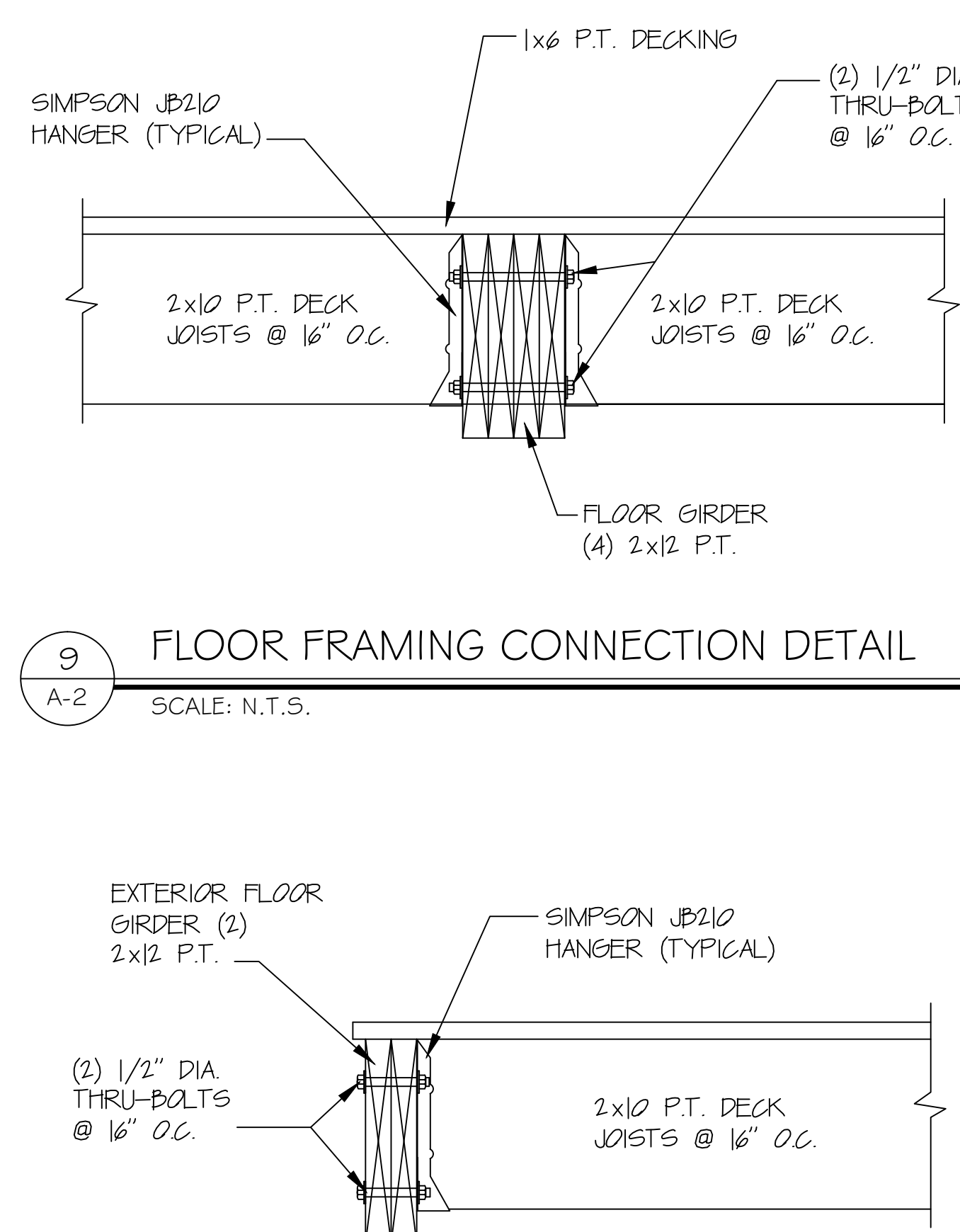
12 BEAM - COLUMN CONNECTION
A-2 SCALE: N.T.S.



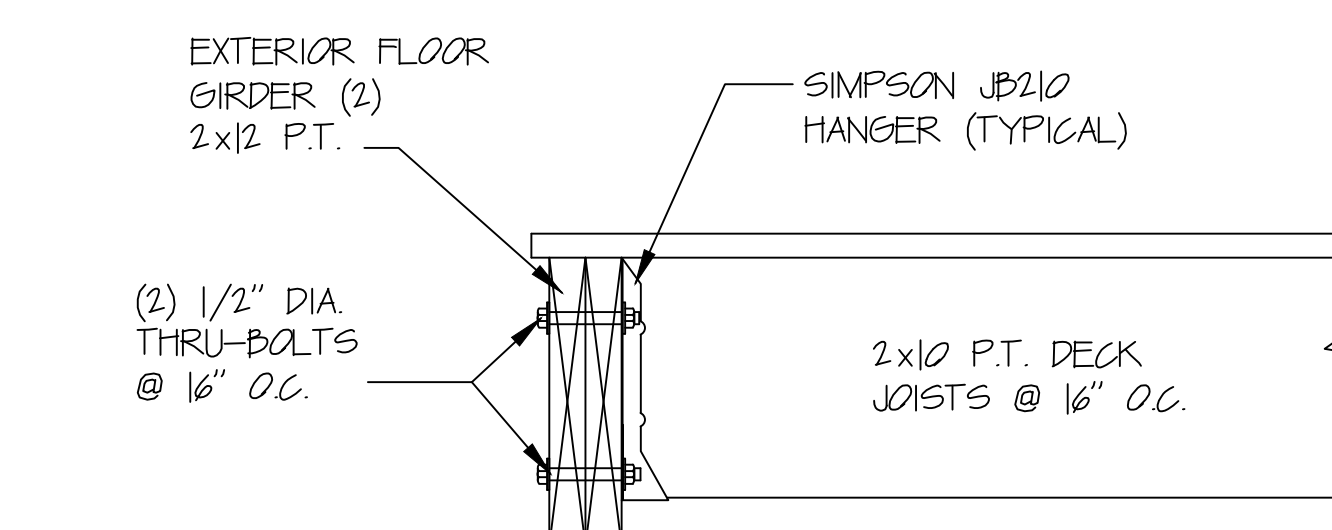
3 FOOTING DETAIL
A-2 SCALE: N.T.S.



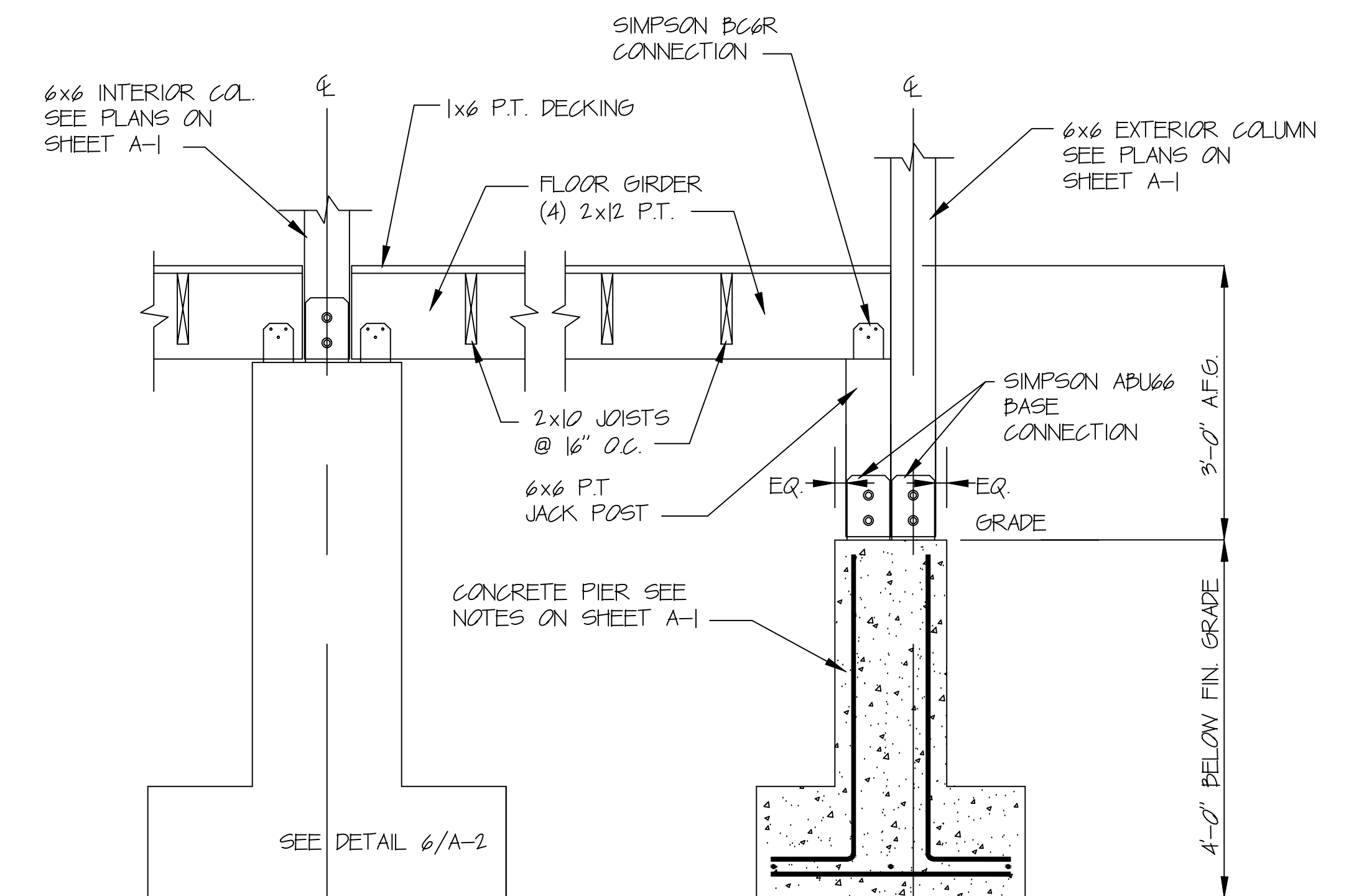
6 FOOTING DETAIL
A-2 SCALE: N.T.S.



9 FLOOR FRAMING CONNECTION DETAIL
A-2 SCALE: N.T.S.



10 FLOOR FRAMING CONNECTION DETAIL
A-2 SCALE: N.T.S.



13 FLOOR FRAMING CONNECTION DETAIL
A-2 SCALE: N.T.S.

Drawing Title SECTION, DETAILS & NOTES	Project Title REBUILD GAZEBO	Date 05/29/2013
Approved: Engineering Project Manager Date	Building No. 112	Checked JAY
Approved: Medical Center Director Date	Location BATH, NEW YORK	Drawn JHH
	Drawing No. 528A6-13-629	Dwg. 3 of 3