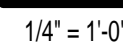
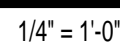
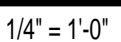
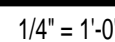
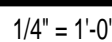
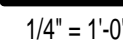
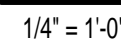
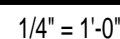
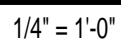
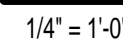
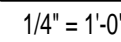
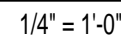
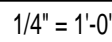
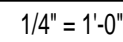






[illegible]CONSULTANTS:

Approved: Project Director

Date

Drawn

Office of  
Construction  
and Facilities  
Management



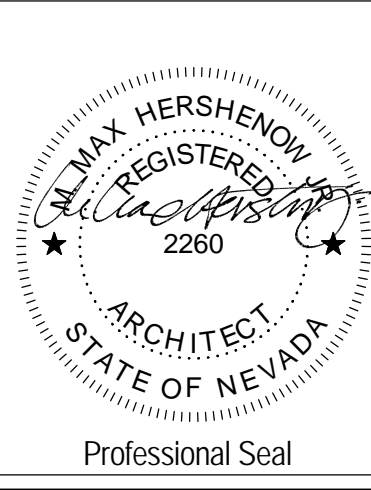
Bid Documents - Final

one eighth inch = one foot.  
one quarter inch = one foot.  
one half inch = one foot.  
three eighths inch = one foot.  
one inch = one foot.  
one and one half inches = one foot.  
three inches = one foot.

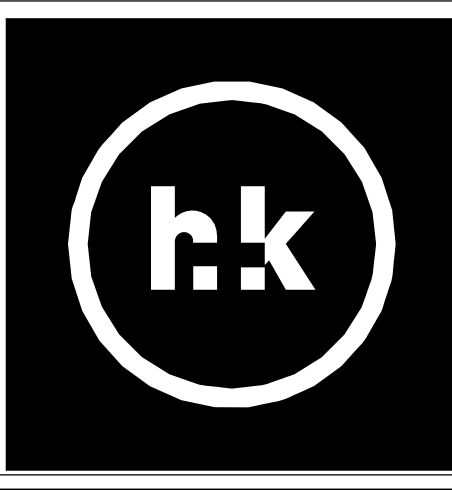
7/22/2013 10:33:05 AM C:\HK Local Project\008\008\008\_VA DICE Local Dwg.rvt

Number	Revision	Date
3	Revision 3	7/22/13

CONSULTANTS:

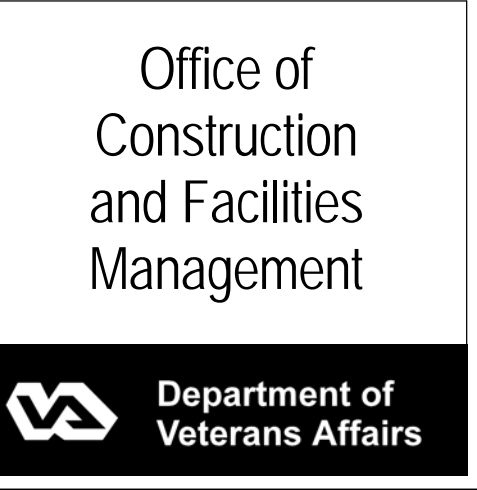


ARCHITECT/ENGINEERS:  
**H+K ARCHITECTS**  
5485 Reno Corporate Drive, Suite 100  
Reno, Nevada 89511-2262  
P 775+332+6640  
F 775+332+6642  
hkarchitects.com



Drawings Title Phase 1 Restroom Plans and Elevations		
Approved: Project Director		
Project Title Remodel and Expansion of DICE Services		
Location 975 Kirman Avenue, Reno, NV 89502		
Date 4/4/2013	Checked LM	Drawn DG

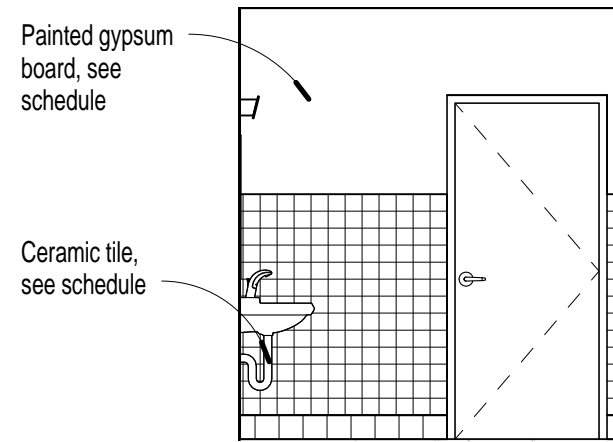
Project Title Remodel and Expansion of DICE Services			Project Number 654-777
			Building Number 1D
Location 975 Kirman Avenue, Reno, NV 89502			Drawing Number
Date 4/4/2013	Checked LM	Drawn DG	AE142



Bid Documents - Final

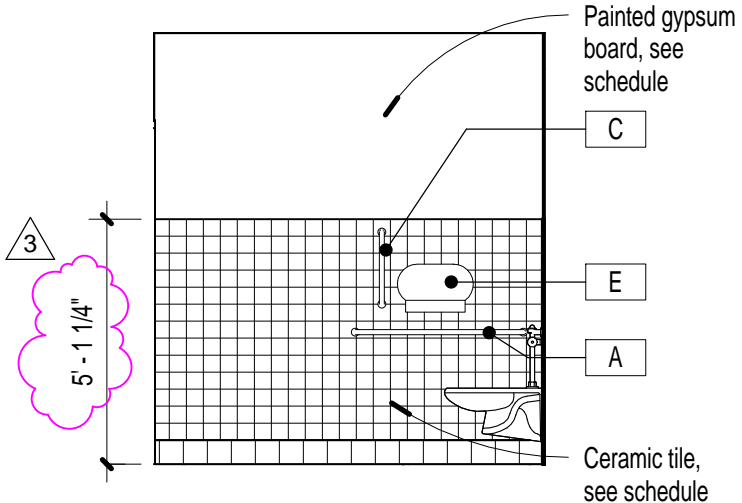
Toilet Accessories Schedule

Mark	Description	Manufacturer	Model	Comments
A	Grab Bar 42"	Bobrick	B-6806	
B	Grab Bar 36"	Bobrick	B-6806	
C	Vertical Grab Bar 18"	Bobrick	B-6806	
D	Seat Cover Dispenser	Safe-T-Gard		
E	Toilet Tissue Dispenser	San-Jamar	Twin 9" JBT	
F	800 ML Deluxe Soap Dispenser	Vionex		
G	Mirror with Stainless Steel Channel Frame	Bobrick	B-165-1836	
H	Paper Towel Dispenser	Kimberly-Clark		
J	Sanitary Napkin Disposal	Bobrick	B-254	
K	Wall Mounted Bench	Pilot Rock	WMB	
L	Garment Hook, Double, SS, Surface Mounted	Bobrick		
S	Mop Rack	Bobrick	B-239 x 34	
T	Grab Bar 30"	Bobrick	B-6806	
U	Mirror with Stainless Steel Channel Frame	Bobrick	B-165-2448	
V	Stainless Steel Clothes Hook	Bobrick	B-233	



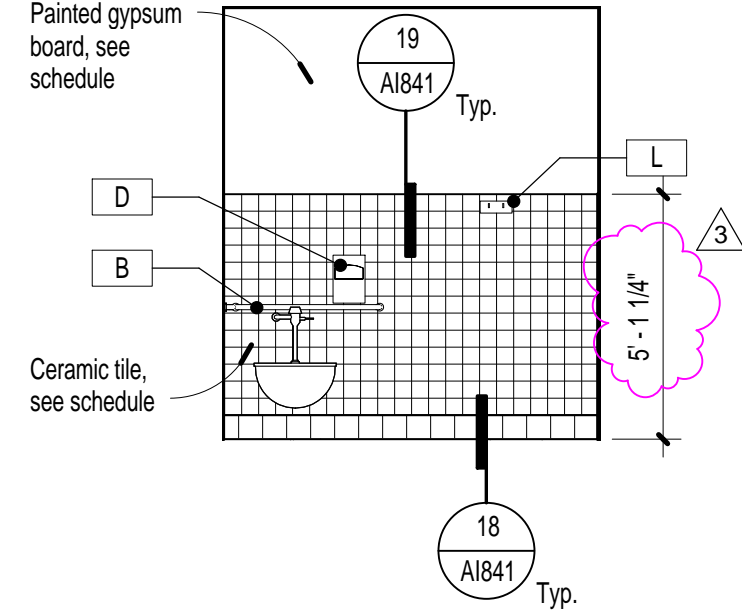
14 DR Toilet G2573 South

1/4" = 1'-0"



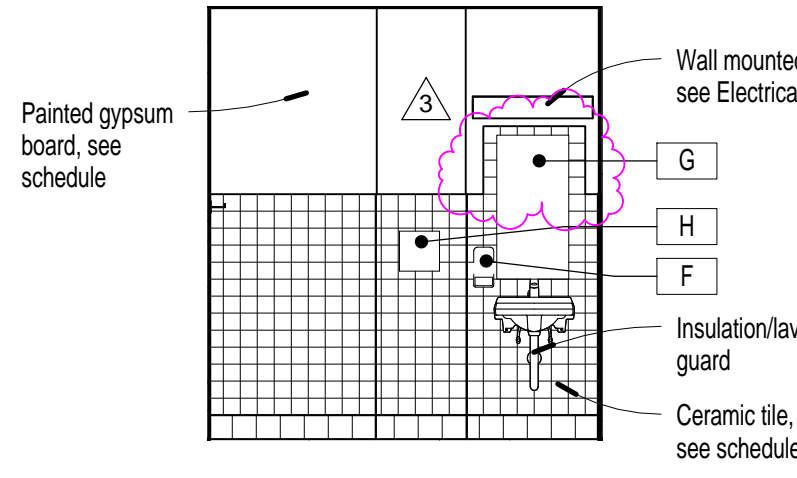
13 DR Toilet G2573 West

1/4" = 1'-0"



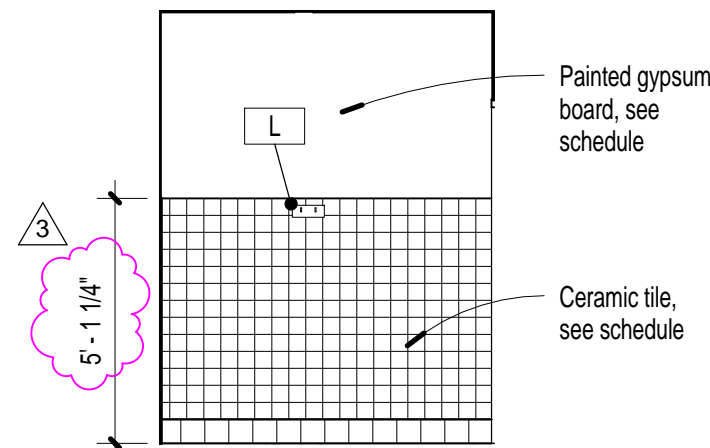
12 DR Toilet G2573 North

1/4" = 1'-0"



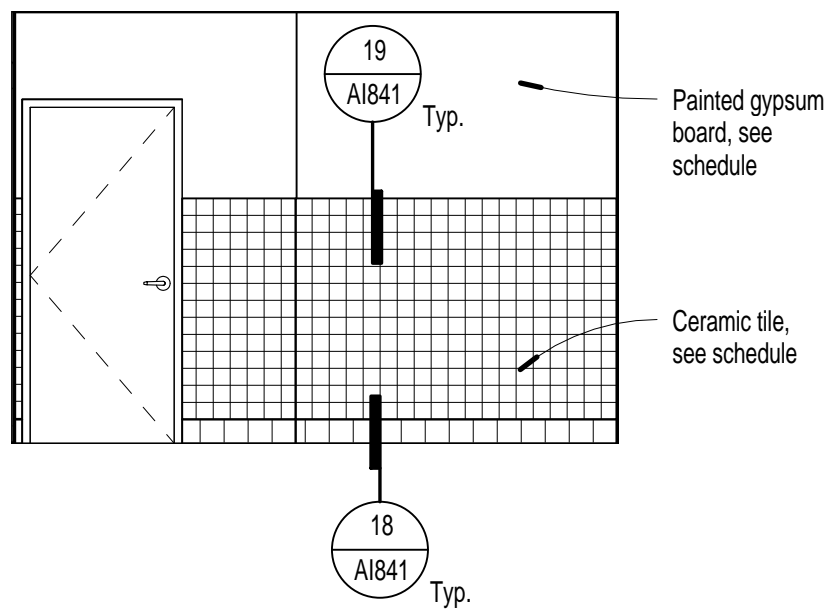
11 DR Toilet G2573 East

1/4" = 1'-0"



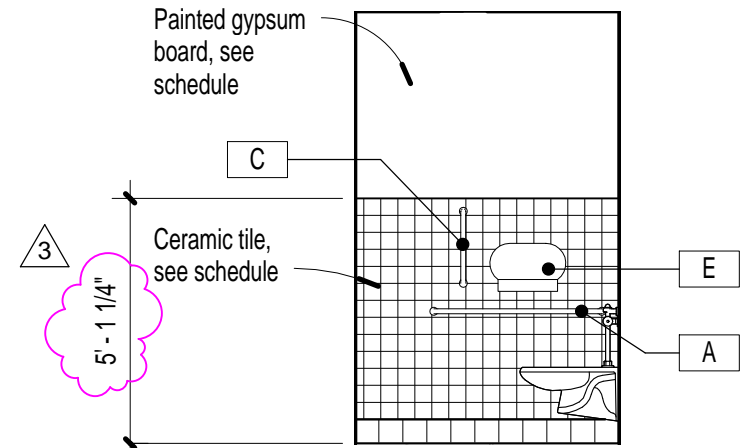
10 Fluoro Toilet + Dressing G2565 South

1/4" = 1'-0"



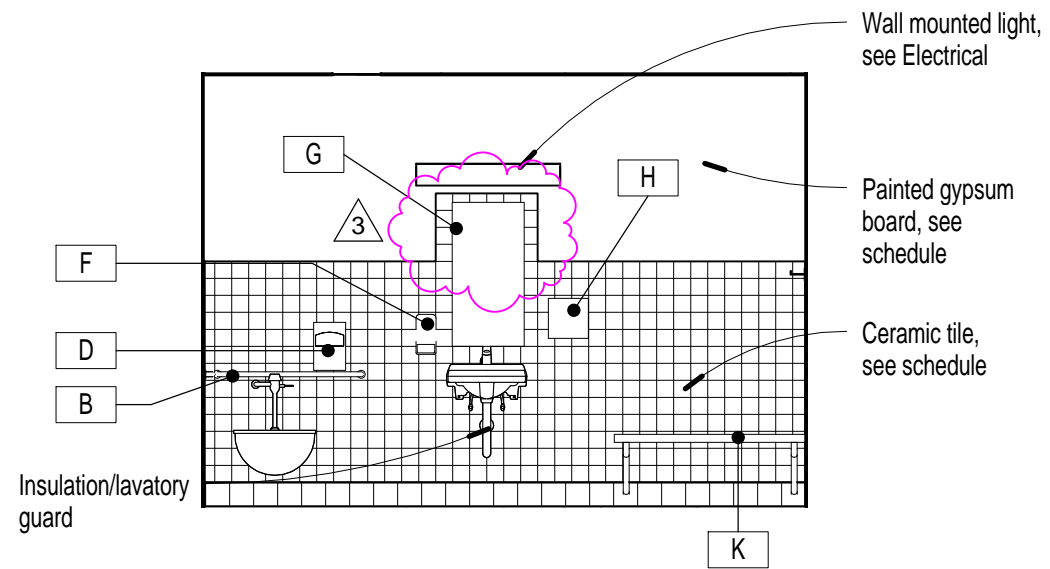
9 Fluoro Toilet + Dressing G2565 West

1/4" = 1'-0"



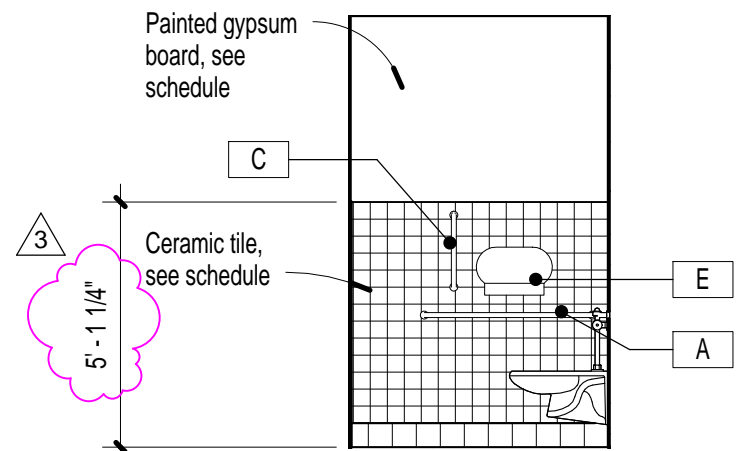
8 Fluoro Toilet + Dressing G2565 North

1/4" = 1'-0"



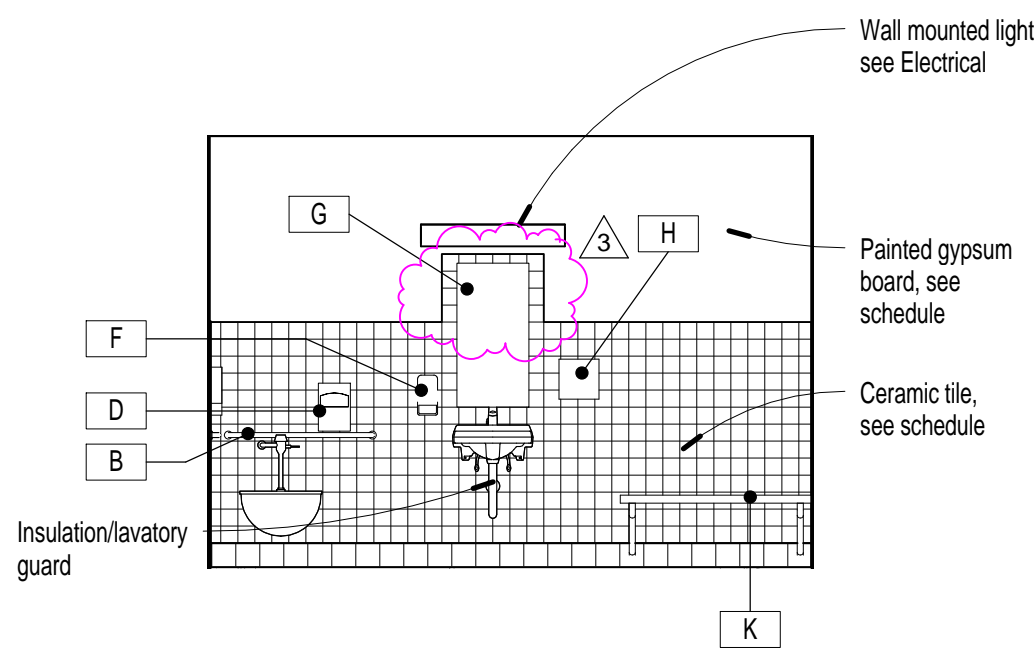
7 Fluoro Toilet + Dressing G2565 East

1/4" = 1'-0"



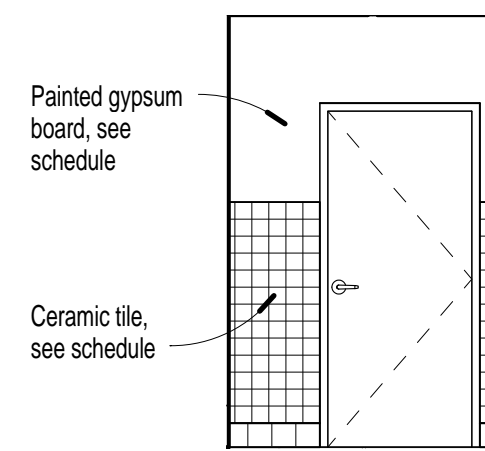
6 Ultrasound Toilet + Dressing G2564 South

1/4" = 1'-0"



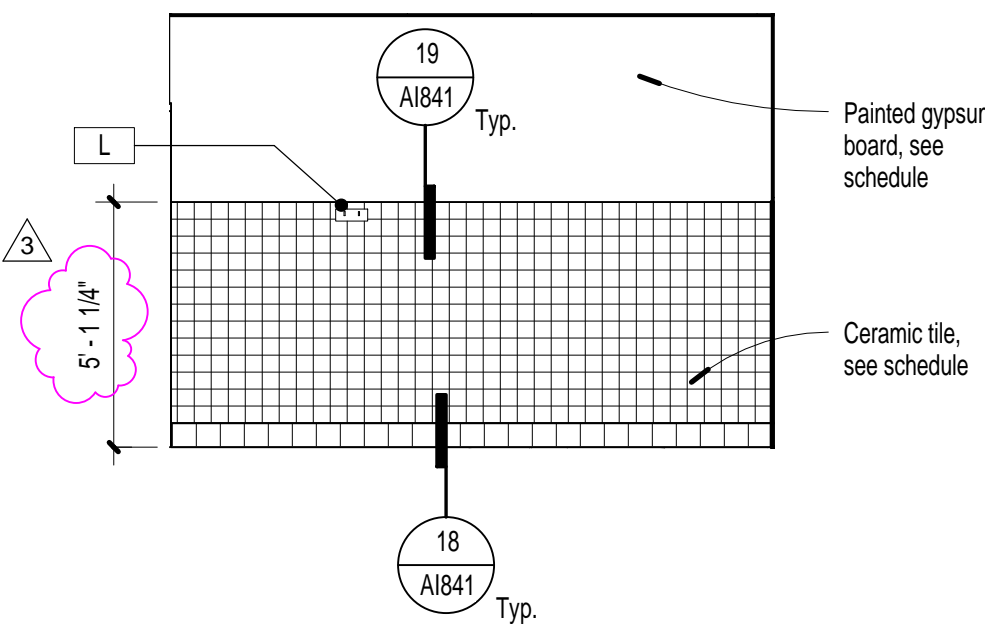
5 Ultrasound Toilet + Dressing G2564 West

1/4" = 1'-0"



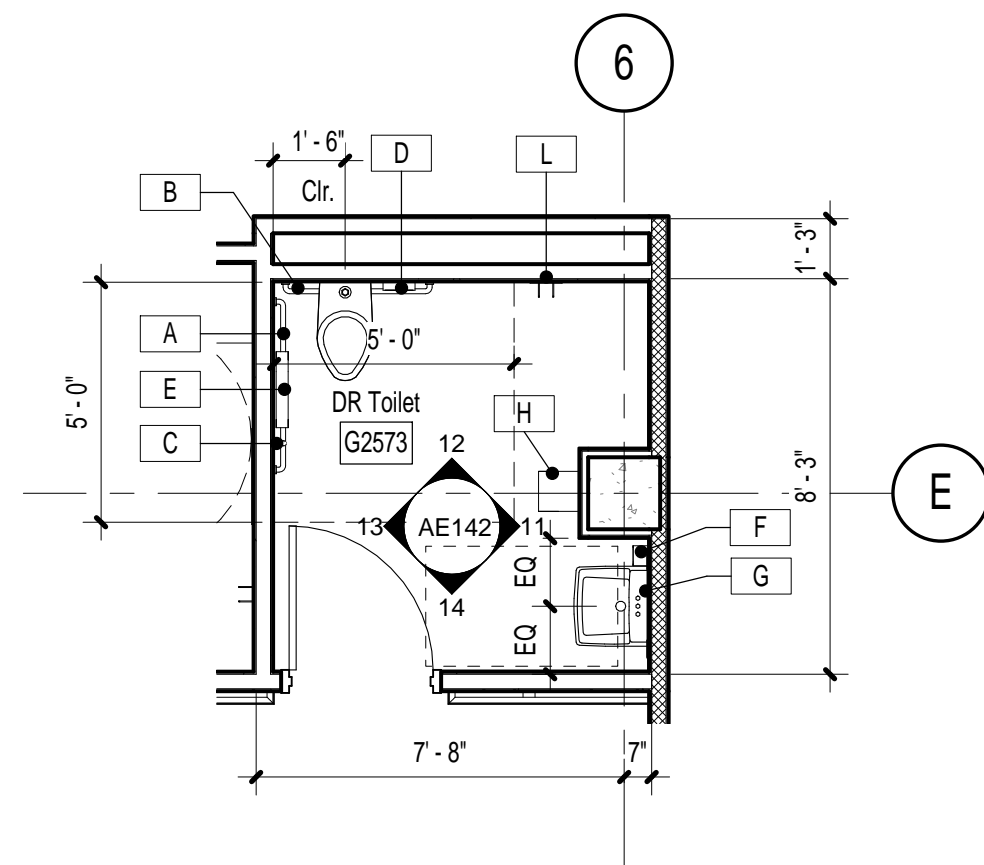
4 Ultrasound Toilet + Dressing G2564 North

1/4" = 1'-0"



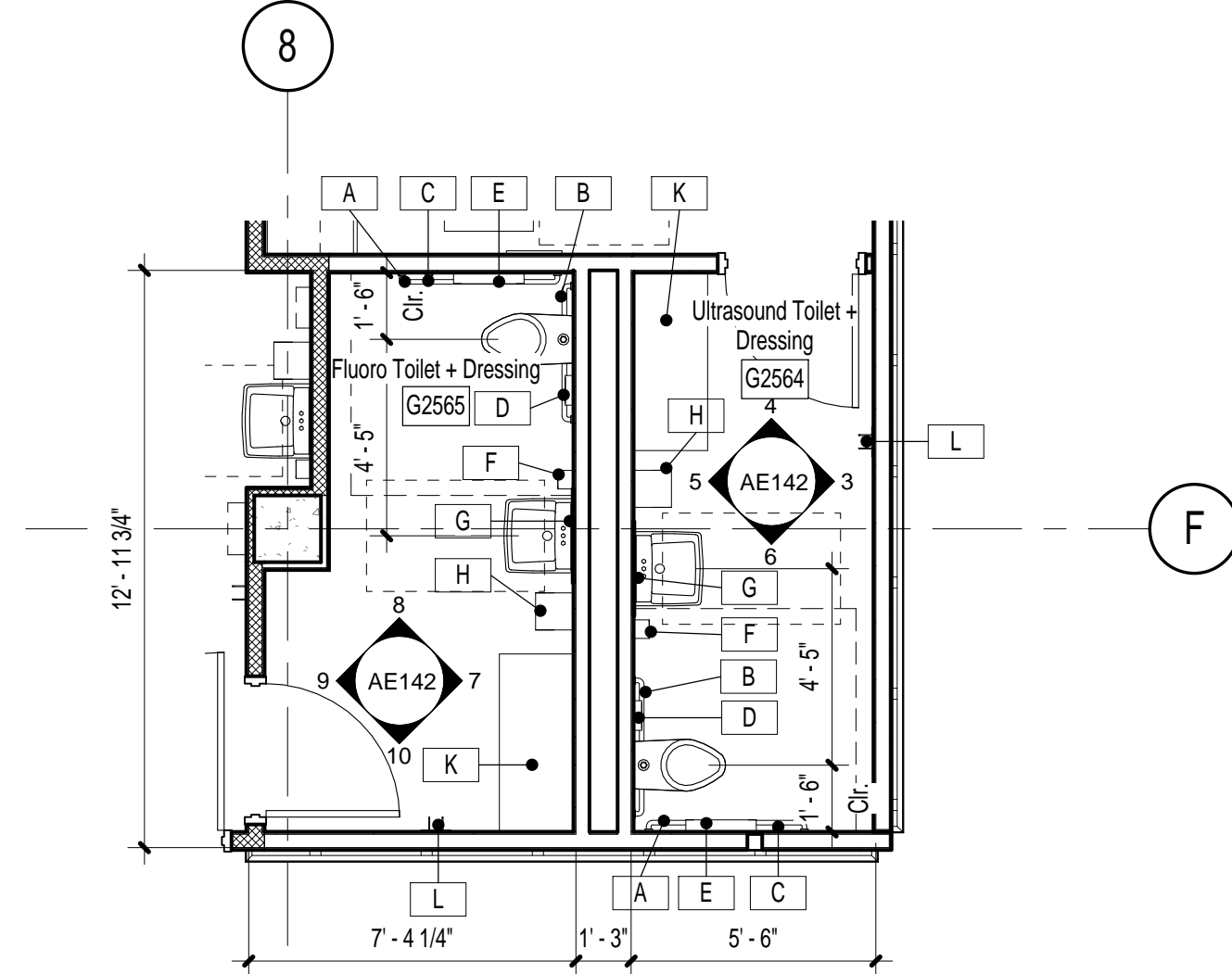
3 Ultrasound Toilet + Dressing G2564 East

1/4" = 1'-0"



2 DR Toilet G2573

1/4" = 1'-0"



1 Ultrasound Toilet + Dressing G2564 / Fluoro Toilet + Dressing G2565

1/4" = 1'-0"



S	Mop Rack	Bobrick	B-239 x 34
T	Grab Bar 30"	Bobrick	B-6806
U	Mirror with Stainless Steel Channel Frame	Bobrick	B-165-2448
V	Stainless Steel Clothes Hook	Bobrick	B-233

[illegible]

CONSULTANTS:



ARCHITECT/ENGINEERS:  
**H+K ARCHITECTS**  
5485 Reno Corporate Drive, Suite 100  
Reno, Nevada 89511-2262  
P 775+332+6640  
F 775+332+6642  
hkarchitects.com



Drawings Title
Phase 2 Restroom Plans and Elevations
Approved: Project Director

Project Title	Remodel and Expansion of DICE Services
---------------	---

Location	975 Kirman Avenue, Reno, NV 89502
----------	-----------------------------------

Date	Checked	Drawn
4/4/2013	LM	DG

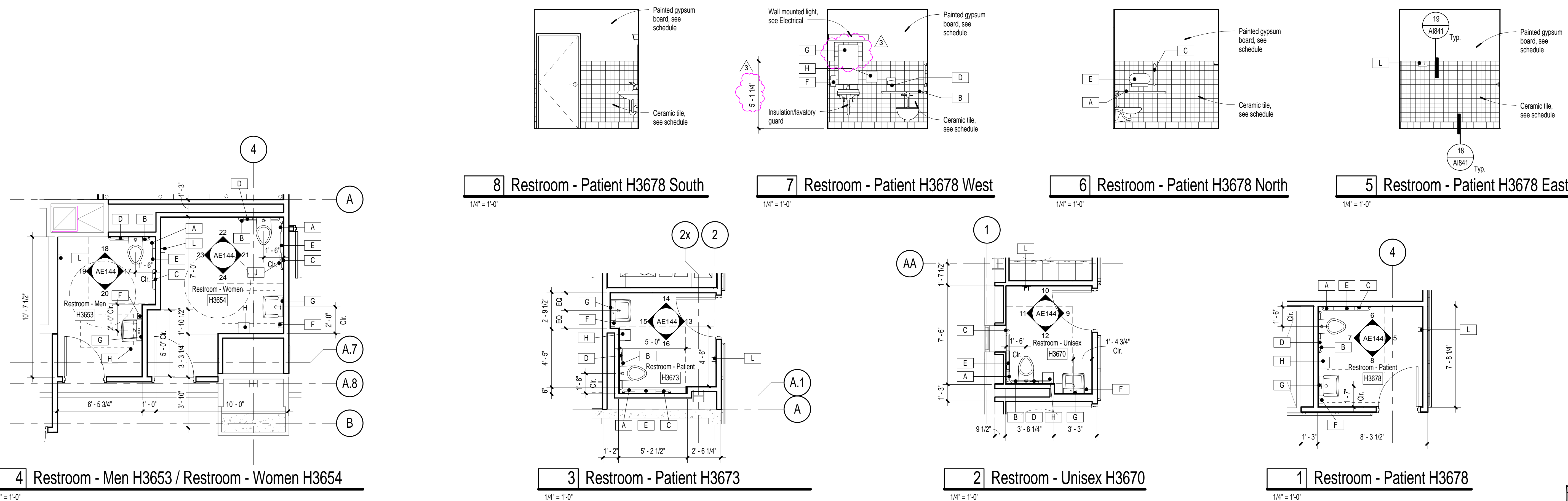
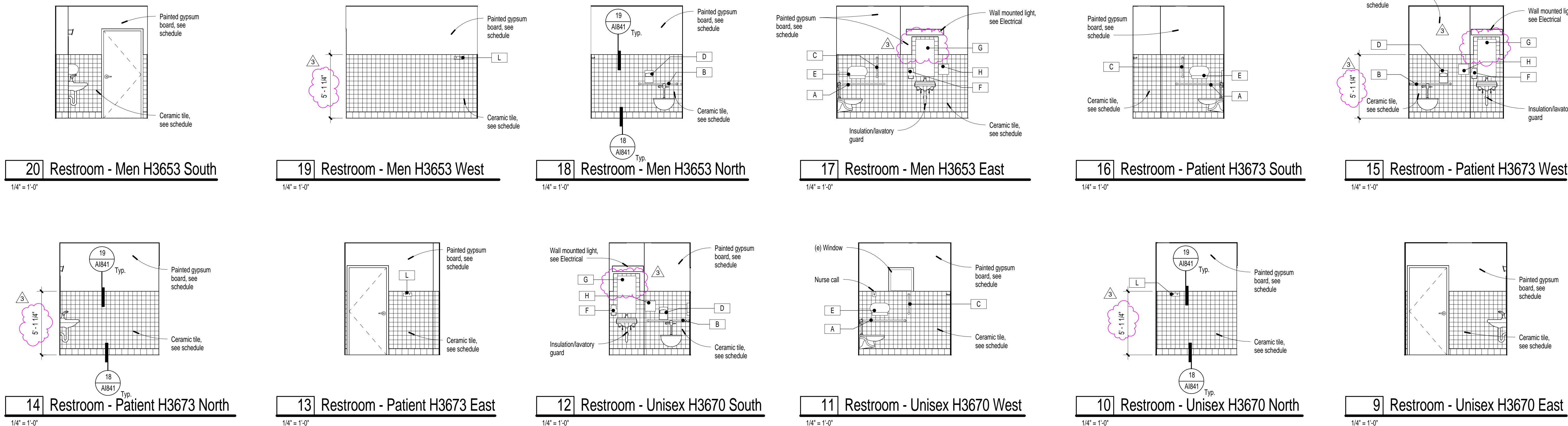
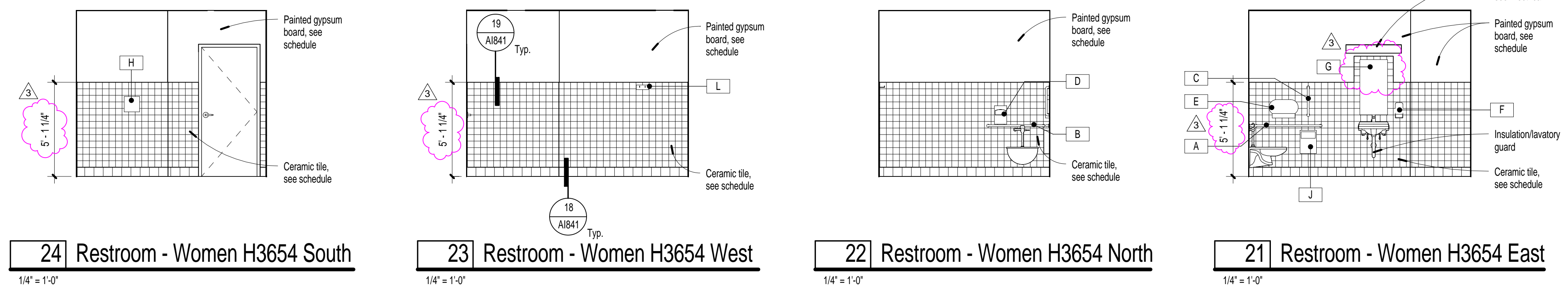
Project Number	654-777
Building Number	1D
Drawing Number	AE1

Office of  
Construction  
and Facilities  
Management

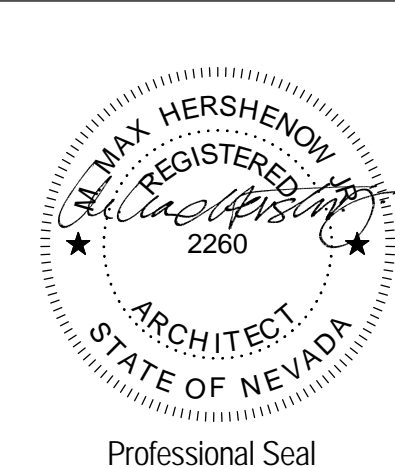




Toilet Accessories Schedule				
Mark	Description	Manufacturer	Model	Comments
A	Grab Bar 42"	Bobrick	B-6806	
B	Grab Bar 36"	Bobrick	B-6806	
C	Vertical Grab Bar 18"	Bobrick	B-6806	
D	Seat Cover Dispenser	Safe-T-Gard		
E	Toilet Tissue Dispenser	San Jamar	Twin 9" JBT	
F	800 ML Deluxe Soap Dispenser	Venox		
G	Mirror with Stainless Steel Channel Frame	Bobrick	B-165-1836	
H	Paper Towel Dispenser	Kimberley-Clark		
J	Sanitary Napkin Disposal	Bobrick	B-254	
K	Wall Mounted Bench	Pilot Rock	WMB	
L	Garment Hook, Double, SS, Surface Mounted	Bobrick		
S	Mop Rack	Bobrick	B-239 x 34	
T	Grab Bar 30"	Bobrick	B-6806	
U	Mirror with Stainless Steel Channel Frame	Bobrick	B-165-2448	
V	Stainless Steel Clothes Hook	Bobrick	B-233	

[illegible]

CONSULTANTS:



ARCHITECT/ENGINEERS:  
**H+K ARCHITECTS**  
5485 Reno Corporate Drive, Suite 100  
Reno, Nevada 89511-2262  
P 775+332+6640  
F 775+332+6642  
hkarchitects.com



<p>Drawings Title</p> <p>Third Floor Restroom Plans and Elevations</p> <p>Approved: Project Director</p>
--

Project Title	Remodel and Expansion of DICE Services
---------------	---

Location		
975 Kirman Avenue, Reno, NV 89502		
Date	Checked	Drawn
4/4/2013	JM	DG

Project Number	654-777
Building Number	1D
Drawing Number	AE1

Office of  
Construction  
and Facilities  
Management



## Bid Documents - Final



