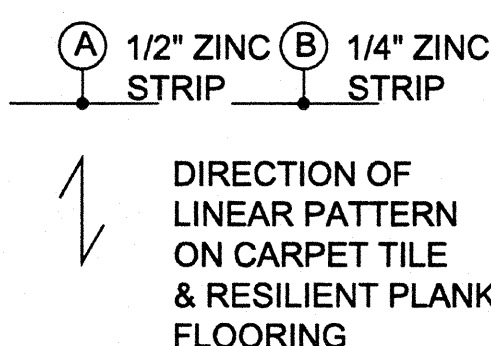
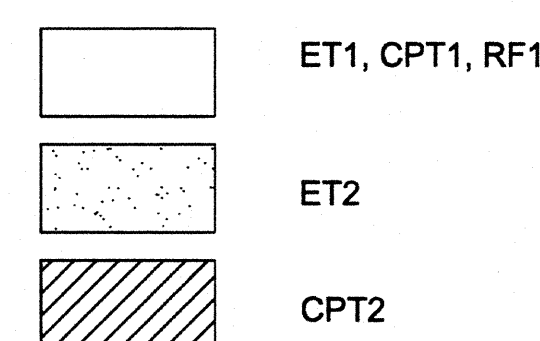


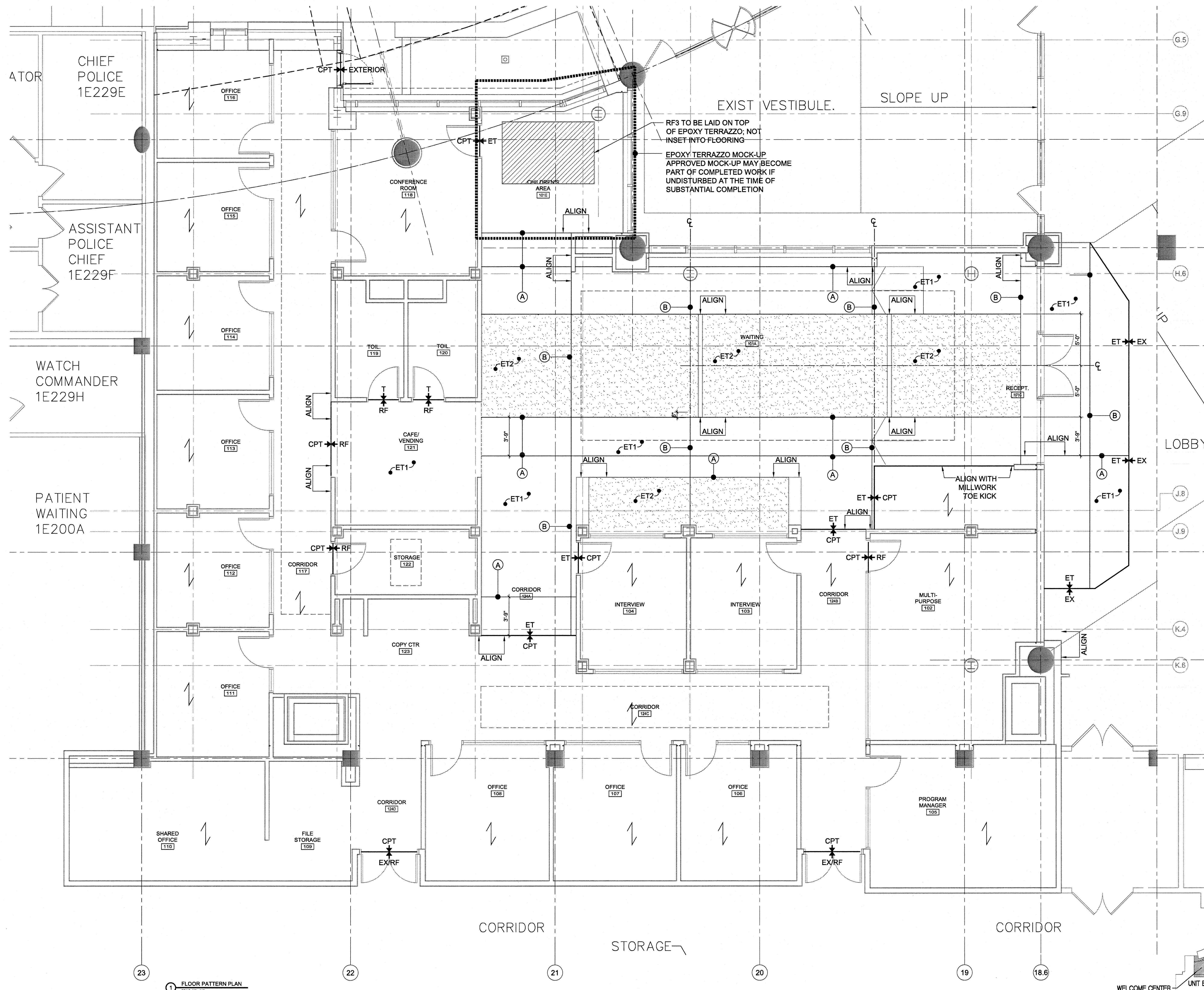
three inches = one foot  
one and one half inches = one foot  
one inch = one foot  
three quarters inch = one foot  
three quarters inch = one foot  
one half inch = one foot  
one half inch = one foot  
three eighths inch = one foot  
one quarter inch = one foot  
one eighth inch = one foot

FLOOR PATTERN KEY

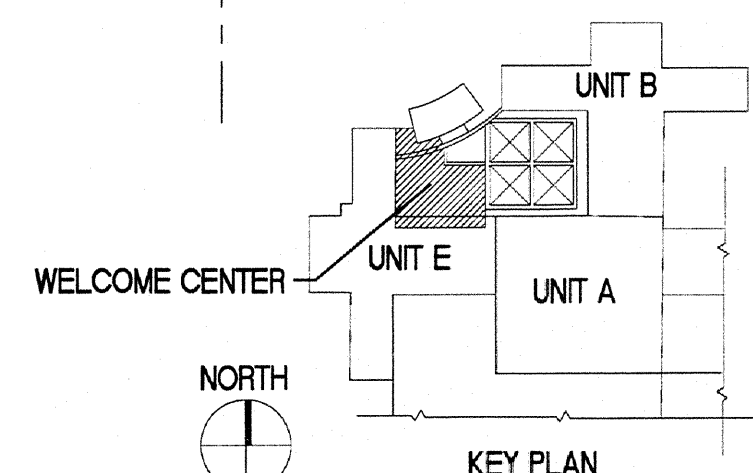


NOTES:

1. REFER TO FINISH LEGEND ILG.1 FOR ADDITIONAL MATERIAL INFORMATION.
2. REFER TO ARCHITECTURAL SPECIFICATIONS FOR CUSTOM EPOXY TERRAZZO REQUIREMENTS.
3. ALL SUB-FLOORS TO BE PROPERLY LEVELED PRIOR TO INSTALLATION OF ALL FINISHED FLOORING MATERIALS. REFER TO SPECIFICATIONS FOR TOLERANCES. VERIFY WITH ARCHITECT PRIOR TO INSTALL.

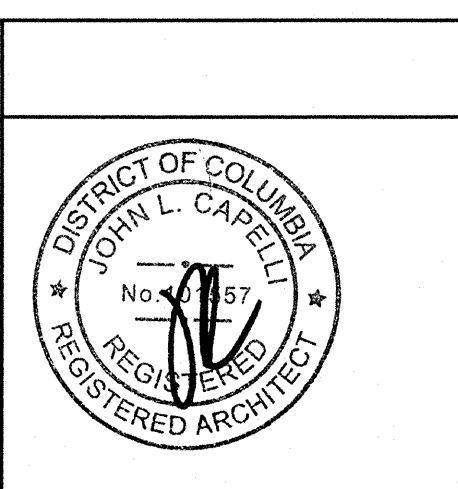


1 FLOOR PATTERN PLAN  
Scale 1/8"=1'-0"



ISSUE 1 - ISSUE FOR CONSTRUCTION	04/30/2019
95 % SUBMISSION	02/17/2019
75 % SUBMISSION	03/16/2011
25 % SUBMISSION	10/29/2010
Revisions:	Date

CONSULTANTS:	



ARCHITECT/ENGINEERS:

**EWING COLE**

1025 Connecticut Avenue, NW  
Suite 900  
Washington, DC 20036-5405  
Tel: 202-467-1500 Fax: 202-296-8950

Drawing Title	INTERIOR FLOOR PATTERN PLAN
Approved Project Director	

Project Title	OIF / OEF WELCOME CENTER DEPARTMENT OF VETERANS AFFAIRS VAMC
Location	Veterans Affairs Medical Center 50 Irving Street NW Washington DC
Date	4-30-2013
Checked	KD
Drawn	TM

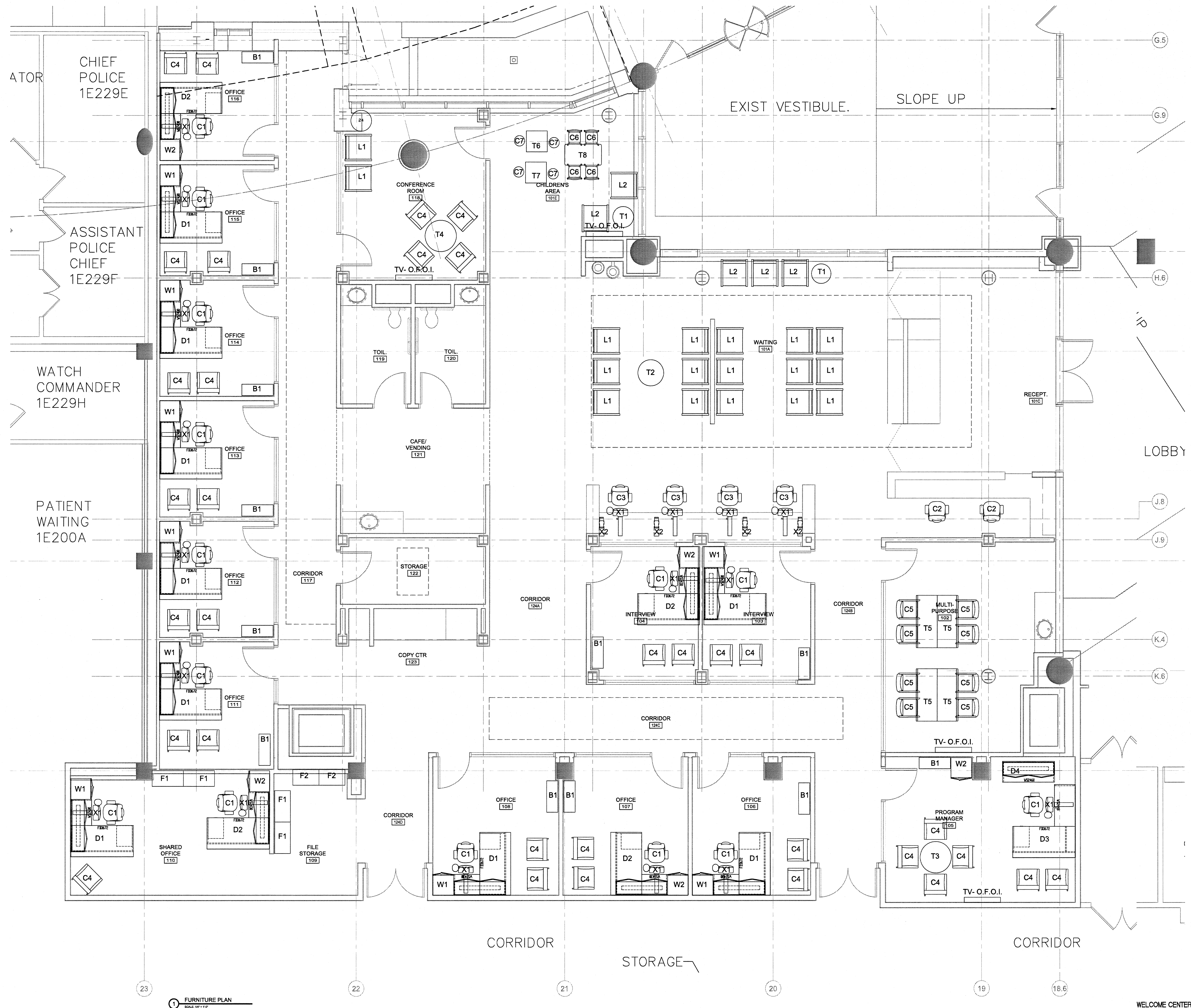
Project Number	688-334 OIF/OEF
Building Number	
Drawing Number	IN.12

Office of  
Construction  
and Facilities  
Management

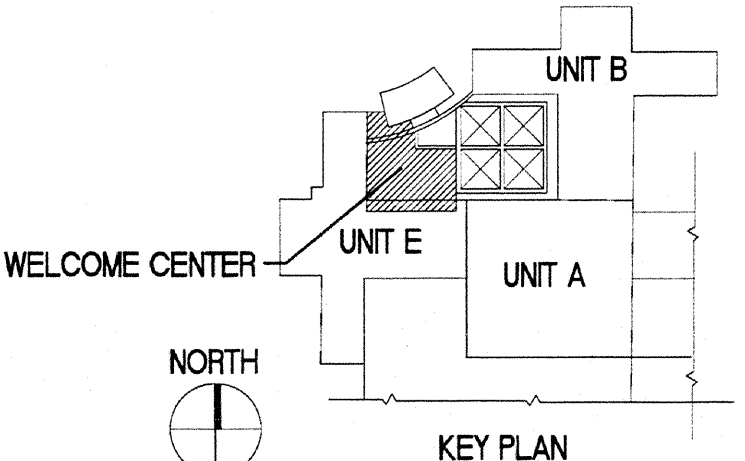
Department of  
Veterans Affairs



three inches = one foot  
one and one half inches = one foot  
one inch = one foot  
three quarters inch = one foot  
one half inch = one foot  
one quarter inch = one foot  
one eighth inch = one foot

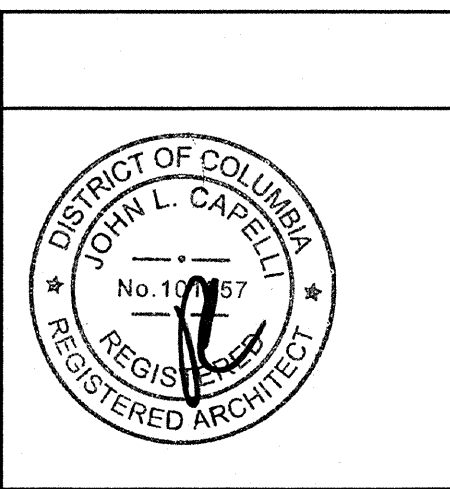


FURNITURE PLAN  
PAGE 17 OF 17



ISSUE 1 - ISSUE FOR CONSTRUCTION	04/30/2010
95 % SUBMISSION	02/17/2012
75 % SUBMISSION	03/16/2011
25 % SUBMISSION	10/29/2010
Revisions:	Date

CONSULTANTS:	
--------------	--



ARCHITECT/ENGINEERS:	
<b>EWING COLE</b>	
1025 Connecticut Avenue, NW Suite 900 Washington, DC 20036-5405 Tel: 202-467-1500 Fax: 202-296-8950	

Drawing Title	FURNITURE PLAN
Approved Project Director	

Project Title	OIF / OEF WELCOME CENTER DEPARTMENT OF VETERANS AFFAIRS VAMC
Location	Veterans Affairs Medical Center 50 Irving Street NW Washington DC
Date	4-30-2013
Checked	KD
Drawn	TM

Project Number	688-334 OIF/OEF
Building Number	
Drawing Number	IF.1

Office of Construction and Facilities Management	
Department of Veterans Affairs	