

DEPARTMENT OF VETERANS AFFAIRS
MEDICAL CENTER
LYONS, N.J. 07939



AERIAL SITE VIEW
N.T.S.



PROJECT TITLE:

WEST CAMPUS
STORM WATER IMPROVEMENTS

V.A. PROJECT NO.: 561A4-12-108

DWG #	DRAWING #	DRAWING TITLE
1	WC-GI 001	COVER & INDEX OF DRAWINGS

SITE DEVELOPMENT:

2	WC-GS 001	SITE PLAN:PROJECT OVERVIEW - WEST CAMPUS STORM WATER IMPROVEMENTS
3	WC-GS 002	SITE PLAN:EXISTING CONDITIONS I (EXISTING CONDITIONS - AUG 2012)
4	WC-GS 003	SITE PLAN:EXISTING CONDITIONS II (EXISTING CONDITIONS - POST PHASE II BLDG 135 ADDITIONS)
5	WC-GS 004	SITE PLAN:EXISTING CONDITIONS III (EXISTING CONDITIONS - POST PHASE III BLDG 135 ADDITIONS)
6	WC-GS 101	SITE PLAN:PARTIAL SITE PLAN
7	WC-GS 102	SITE PLAN:PARTIAL SITE PLAN
8	WC-GS 103	SITE PLAN:PARTIAL SITE PLAN
9	WC-GS 901	SITE PLAN:DETAILS
10	WC-GS 902	SITE PLAN:DETAILS

100% CONSTRUCTION DOCUMENTS

CONSULTANTS:		ENGINEERS:		Drawing Title COVER & INDEX OF DRAWINGS		Project Title WEST CAMPUS: STORM WATER IMPROVEMENTS		Project Number 561A4-12-108		Office of Construction and Facilities Management Department of Veterans Affairs
				Approved: Project Director		Location V.A.M.C. LYONS, NJ		Building Number WEST CAMPUS		
						Date 08/01/12		Checked MDF		
						Drawn SAR		Drawing Number WC-GI-001		
REVISION DESCRIPTION		DATE		UNAUTHORIZED ALTERATION OR ADDITION TO A PLAN BEARING A LICENSED PROFESSIONAL ENGINEER'S SEAL IS A VIOLATION OF STATE EDUCATION LAW.				Dwg. 1 of 10		

INTER-PROJECT CONSTRUCTION SEQUENCING

FOR THE PURPOSES OF PROVIDING PROPER STORM WATER MANAGEMENT , AND IN COMPLIANCE WITH THE STORM WATER REQUIREMENTS SET FORTH BY THE SOIL CONSERVATION DISTRICT OF SOMERSET COUNTY AND THE STATE OF NEW JERSEY, WHILE ALSO PROVIDING FOR PROPER SEQUENTIAL CO-ORDINATION BETWEEN THE FOLLOWING VA PROJECT NUMBERS:

561-235 (PHASE II CONSTRUCTION, IMPROVEMENTS TO VA BLDG# 135)
561-236-A&B (PHASE III CONSTRUCTION, IMPROVEMENTS TO VA BLDG# 135)
561A4-12-108 (WEST CAMPUS STORM WATER IMPROVEMENTS)

THE FOLLOWING PROJECT PHASING SEQUENCE SHALL BE FOLLOWED AND ADHERED TO BY ALL ENTITIES CONTRACTED TO PERFORM THE CONSTRUCTION OF THE ABOVE REFERENCED PROJECTS.

- 1) WRITTEN NOTIFICATION SHALL BE GIVEN TO SOMERSET-UNION SOIL CONSERVATION DISTRICT 72 HOURS PRIOR TO ANY LAND DISTURBANCE
- 2) PRIOR TO FOR ANY STEP LISTED WITHIN THIS CONSTRUCTION SEQUENCING, ALL APPROPRIATE EROSION AND SEDIMENT CONTROL MEASURES SHALL BE INSTALLED, MAINTAINED AND INSPECTED AS PER THE PLAN SET FOR THAT AREA(S) AND SHALL REMAIN UNTIL PERMANENT STABILIZATION OF THE DISTURBED AREA HAS BEEN ACHIEVED, WHERE PERMANENT STABILIZATION IS DEFINED AS THE POINT IN TIME WHEN 80% VEGETATIVE COVER HAS BEEN ACHIEVED.
- 3) SIMULTANEOUSLY WITH STEPS #4 THRU #13 LISTED BELOW, CONSTRUCTION OF THE PHASE II BUILDING ADDITION PROJECT WILL COMMENCE, BEGINNING WITH INSTALLATION OF ALL PIPING AND DRAINAGE STRUCTURE IMPROVEMENTS, AND SITE GRADING AS REQUIRED TO PROVIDE FINISHED SURFACE IN THE AREA SURROUNDING THE PHASE II BUILDING ADDITION, AS SHOWN ON THE PLANS SET FOR VA PROJECT# 561-235. ALL PROPOSED STORM WATER IMPROVEMENTS SHOWN ON THIS PLAN SET SHALL BE COMPLETED, WITH THE EXCEPTION OF IMPROVEMENTS TO THE EXISTING STORM WATER POND, IMPROVEMENTS TO WHICH SHALL BE PERFORMED IN THE STEPS OUTLINED BELOW FOR VA PROJECTS 561-CS1-136 & 561-236-A&B.
- 4) CONSTRUCT 1689' STORM WATER PIPE LINE FROM EXISTING STORM DRAINAGE DITCH TO THE LOCATION OF POND #2 OUTLET STRUCTURE, INCLUDING INSTALLATION OF THE OUTLET STRUCTURE AS SHOWN IN THE PLAN SET FOR VA PROJECT# 561A4-12-108.
- 5) CONSTRUCT STORM WATER POND AS SHOWN ON PHASE III CONSTRUCTION PLANS (VA PROJECT# 561-236-A&B) AND IDENTIFIED AS "POND #1" ON THE STORM WATER IMPROVEMENT PLANS (VA PROJECT# 561A4-12-108).

POND CONSTRUCTION SHALL CONSIST OF:

- EXCAVATION OF EXISTING POND TO ELEVATIONS AS SHOWN ON THE PLAN SETS FOR VA PROJECT# 561-236-A&B & VA PROJECT# 561A4-12-108 WHERE GRADING CONFLICTS EXIST BETWEEN THE PLAN SETS, VA PROJECT# 561A4-12-108 SHALL RULE.
- EXCAVATION CUT OF APPROX 863 CUBIC YARDS FROM POND #1 SHALL BE APPROPRIATELY PLACED FOR THE CONSTRUCTION OF POND #2 AS DEFINED IN PLAN SET FOR VA PROJECT# 561A4-12-108. PLACED FILL SHALL BE COMPACTED TO 95% PROCTOR DENSITY, IN LIFTS NOT TO EXCEED 6".
- INSTALL POND #1 OUTLET STRUCTURE WITH OUTLET PIPE FROM STRUCTURE TO POINT WHERE IT WILL DRAIN INTO POND #2 AS SHOWN IN PLAN SET 561A4-12-108 , AND PROVIDE TEMPORARY RCP PIPING FROM THAT POINT TO THE TEMPORARY INLET ON THE SIDE OF THE POND #2 OUTLET STRUCTURE. RCP PIPING SHALL BE KEPT SECURELY IN PLACE BY MEANS OF GRAVEL BERMS WITH A MAX SLOPE OF 2H:1V WITH A MINIMUM HEIGHT OF 1/2 PIPE DIAMETER ALONG BOTH SIDES OF PIPE FOR THE ENTIRE PIPE LENGTH.
- PROVIDE SEDIMENT PROTECTION OF THE LOWEST ORIFICE IN THE POND #2 OUTLET STRUCTURE TO HELP DETER SEDIMENT FROM ENTERING STRUCTURE DURING POND CONSTRUCTION. DRAINAGE TECHNIQUES SHALL BE EMPLOYED AS REQUIRED TO ALLOW CONSTRUCTION TO PROGRESS.
- EXCAVATE AND REMOVE EXISTING 12" RCP OUTLET PIPE FROM POND AND DISPOSE OF PROPERLY.
- CUT BACK EXISTING STORM PIPES DRAINING INTO POND #1 TO BE FLUSH WITH NEW POND WALL LOCATIONS, AND INSTALL FLARED END SECTIONS.

- 6) RE-GRADE THE "NORTH HILL" AREA, LOCATED NORTH WEST OF THE COMMUNITY LIVING CENTER (VA BLDG # 135) IN PREPARATION FOR PHASE III A & B CONSTRUCTION, AS SHOWN ON PHASE III PLAN SET FOR VA PROJECT# 561-236-A&B. GRADING WILL REQUIRE A CUT OF APPROXIMATELY 250 CUBIC YARDS, WHICH SHALL BE APPROPRIATELY PLACED FOR THE CONSTRUCTION OF POND #2 AS SHOWN ON THE PLAN SET FOR VA PROJECT# 561A4-12-108.

- 7) RE-GRADE AREA WEST OF VA BLDG#135 AND INSTALL 4" WIDE DRAINAGE SWALE AS SHOWN ON PLAN SET FOR VA PROJECT# 561-236-A&B.

- 8) CONTINUATION OF CONSTRUCTION OF POND #2. EXCAVATION CUT OF APPROXIMATELY 1140 CUBIC YARDS WILL PROVIDE THE REMAINING FILL REQUIRED FOR THE CONSTRUCTION OF POND #2.

- 9) UPON 95% COMPLETION OF POND #2, 95% COMPLETION BEING DEFINED AT THE POINT IN TIME WHEN ALL THE WHERE ALL THE FOLLOWING CONDITIONS HAVE BEEN MET:

- GRADING OF THE INTERIOR AND EXTERIOR SLOPES, AND THE FLOOR OF THE POND HAVE BEEN COMPLETED. (WITH THE EXCEPTION OF THE AREA CONTAINING THE TEMPORARY 24" RCP STORM PIPE.)
- ALL GRADED SURFACES MENTIONED ABOVE HAVE REACHED PERMANENT STABILIZATION, WITH PERMANENT STABILIZATION BEING DEFINED AS HAVING ATTAINED A MINIMUM OF 80% VEGETATIVE COVER.

THE TEMPORARY 24" RCP STORM PIPE SHALL THEN BE REMOVED, THE FLARED END SECTION & RIP-RAP OUTLET PROTECTION SHALL BE INSTALLED AT THE OUTLET FROM POND #1 INTO POND #2 (AS SHOWN IN THE PLAN SET FOR VA PROJECT# 561A4-12-108), AND THE REMAINING DISTURBED AREAS WITHIN POND #2 SHALL BE FINELY GRADED AND STABILIZED.

- 10) PHASE II BUILDING CONSTRUCTION, WING "B", AS SHOWN IN THE PLAN SET FOR VA PROJECT# 561-235.

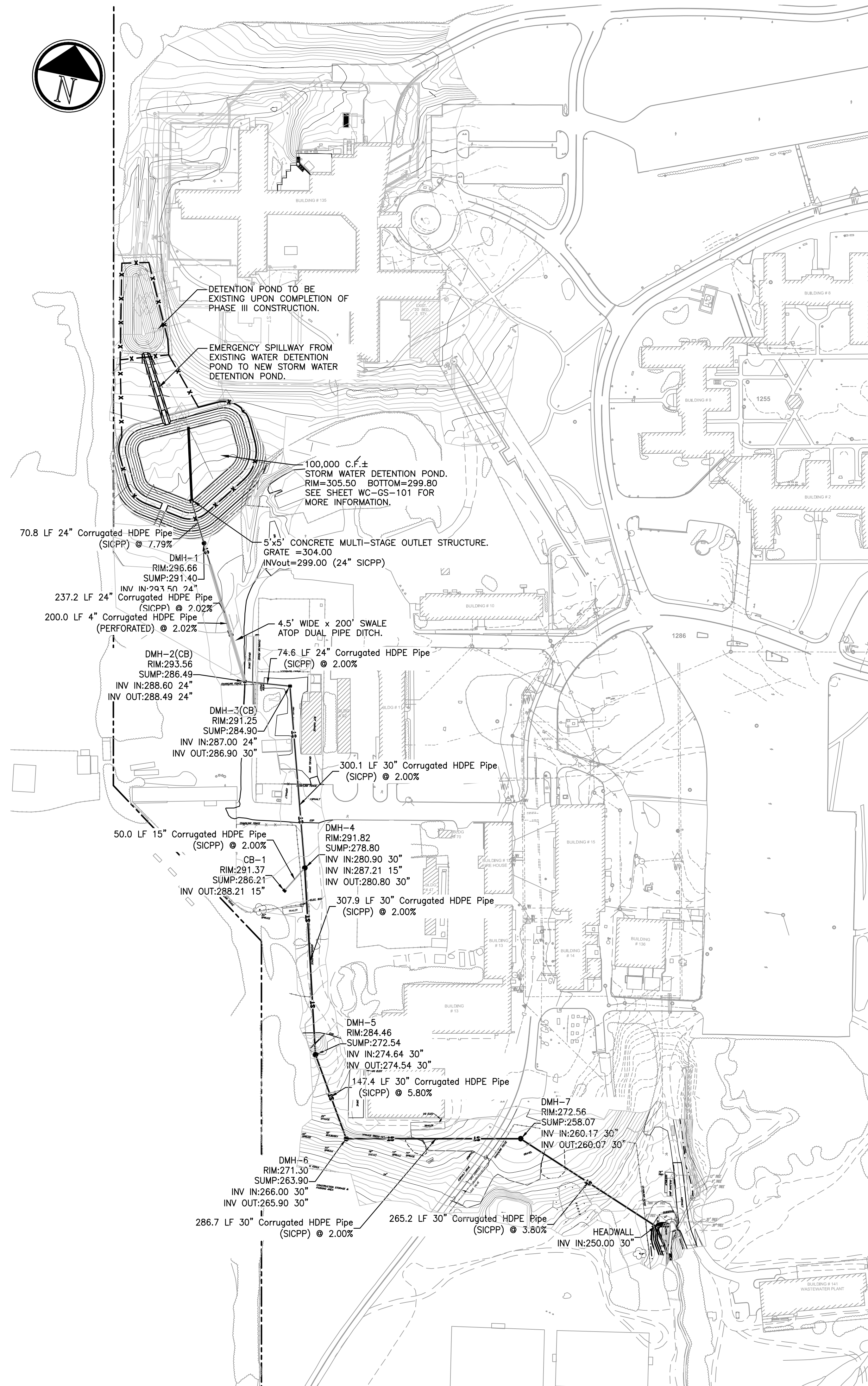
- 11) PHASE III CONSTRUCTION OF STORM WATER IMPROVEMENTS ALONG THE NORTH HILL AREA AND ALONG SWALE TO THE WEST OF VA BLDG# 135, AS SHOWN ON THE PLAN SET FOR VA PROJECT# 561-236-A&B

- 12) PHASE III BUILDING CONSTRUCTION, WINGS C & D, STEAM TUNNELS, ELECTRICAL TRENCHING, ETC. AS SHOWN OF THE PLAN SET FOR VA PROJECT# 561-236-A&B.

- 13) FINAL SITE GRADING AND STABILIZATION OF ALL DISTURBED AREAS, AND REMOVAL OF ALL EROSION& SEDIMENT CONTROL MEASURES UPON PERMANENT STABILIZATION WITH A MINIMUM OF 80% VEGETATIVE COVER.

DRAINAGE STRUCTURE SCHEDULE

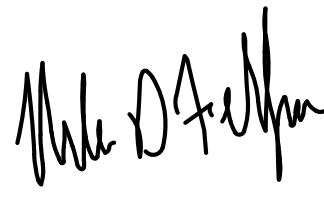
DMH	STRUCTRE TYPE	IRON FRAME TYPE
DMH-1	5' (I.D.) CYLYNDRICAL	24" LOCKABLE MANHOLE (SEE DETAIL 6/WC-GS-902)
DMH-2 (CB)	5' (I.D.) CYLYNDRICAL	24"x24" FIELD INLET (SEE DETAIL 5/WC-GS-902)
DMH-3 (CB)	5' (I.D.) CYLYNDRICAL	24"x24" FIELD INLET (SEE DETAIL 5/WC-GS-902)
DMH-4	5' (I.D.) CYLYNDRICAL	24" LOCKABLE MANHOLE (SEE DETAIL 6/WC-GS-902)
CB-1	30"x48" (I.D.)	CAMPBELL #3408 FIELD INLET (SEE DETAIL 6/WC-GS-901)
DMH-5	5' (I.D.) CYLYNDRICAL	24" LOCKABLE MANHOLE (SEE DETAIL 6/WC-GS-902)
DMH-6	5' (I.D.) CYLYNDRICAL	24" LOCKABLE MANHOLE (SEE DETAIL 6/WC-GS-902)
DMH-7	5' (I.D.) CYLYNDRICAL	24" LOCKABLE MANHOLE (SEE DETAIL 6/WC-GS-902)
HEADWALL	WINGED CONCRETE HEADWALL WITH SLAB BASE. (SEE DETAIL 1/WC-GS-103)	REMOVABLE PROTECTIVE SCREEN, FABRICATED 6"x6" WELDED GRID OF 1/2" BARS, HOT DIP GALVANIZED, FASTENED & LOCKED TO WALL.




File Name: F:\2011\11-348 VALYONS STORM WATER\WC-GS-003.dwg (Layout: 135-GS-003)
Date: Fri, Mar 08, 2013 1:13 PM (Name: sar)

REV	REVISION DESCRIPTION	DATE
2	SOMERSET SOIL CONS. DIST. APPROVAL	03/08/13
1	SOMERSET CNTY STORM WATER REVIEW	02/20/13

CONSULTANTS:	

MARK D. FELLENER, P.E.

NJ PROFESSIONAL ENGINEER NO. 24GE04661500

ENGINEERS:	
FELLENER  ENGINEERING LLP	www.fellp.com
FE PROJECT #: 11-348	181 Church St., Suite 100, Poughkeepsie, NY 12601
22 Mulberry St., Suite 2A, Middletown, NY 10940	1-845-454-9704 fx 855-320-8735
1-845-343-1481 fx 845-343-4986	
UNAUTHORIZED ALTERATION OR ADDITION TO A PLAN BEARING A LICENSED PROFESSIONAL ENGINEER'S SEAL IS A VIOLATION OF STATE EDUCATION LAW.	

Drawing Title
SITE PLAN: EXISTING CONDITIONS II
Approved: Project Director

Project Title
WEST CAMPUS: STORM WATER IMPROVEMENTS
Location
V.A.M.C. LYONS, NJ
Date
08/01/12

Project Number
561A4-12-108
Building Number
WEST CAMPUS
Drawing Number
WC-GS-003
Dwg. 4 of 10



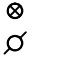
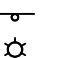
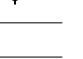

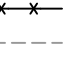
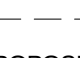

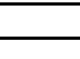







Office of Construction and Facilities Management
 Department of Veterans Affairs

100% CONSTRUCTION DOCUMENTS

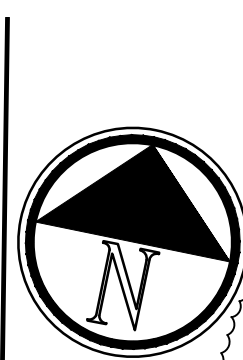
GENERAL NOTES:

- CONSULT SHEET WC-GS-002 FOR VERTICAL DATUM RELATING TO INVERTS AND RIM ELEVATIONS OF EXISTING CATCH BASINS, STORM PIPES, STORM MANHOLES, SEWER MANHOLES, WATER MANHOLES, AND OTHER SUCH STRUCTURES.
- ALL VERTICAL DATUM BASED ON NGVD 1929.
- EXISTING SITE SHOWN ON THIS SHEET IS BASED ON THE EXISTING SURVEY, AS SHOWN ON SHEET WC-GS-002, WITH ADDITIONAL INCORPORATION OF DATA FROM THE PHASE II PROJECT PLANS "CLC ADDITIONS AND ALTERATIONS--PHASE II" PLAN SET, PREPARED BY NADASHAY KOPELSON ARCHITECTS, "SITE, UTILITY & GRADING PLAN", DATED 6/15/2011.
- CONTRACTOR TO VERIFY ALL ELEVATION AND LOCATION DATA OF ALL UTILITIES, STORM WATER, SANITARY SEWER AND OTHER SUCH SYSTEMS BEFORE THE BEGINNING OF ANY CONSTRUCTION ACTIVITIES.

LEGEND

EXISTING FEATURES	
	SANITARY MANHOLE
	STORM INLET
	FIRE HYDRANT
	WATER VALVE
	UTILITY POLE
	SIGN
	LIGHT POLE
	SANITARY SEWER
	STORM SEWER
	UNDERGROUND WATER LINE
	FENCE LINE
	312 - CONTOUR - MINOR
	315 - CONTOUR - MAJOR
PROPOSED EXISTING FEATURES (PHASE II CONSTRUCTION)	
	315 - CONTOUR - FINISHED
	ST - STORMWATER PIPE
	SM - STORM WATER MANHOLE
	SS - SANITARY SEWER

1 PLANNED EXISTING CONDITIONS (POST PHASE II CLC BLDG 135 CONSTRUCTION)
1"=20'



three inches = one foot
one and one half inches = one foot
one inch = one foot
three quarters inch = one foot
one half inch = one foot
three eighths inch = one foot
one quarter inch = one foot
one eighth inch = one foot

BUILDING 135
2 STORY MASONRY BUILDING
(240 BED COMMUNITY LIVING CENTER)

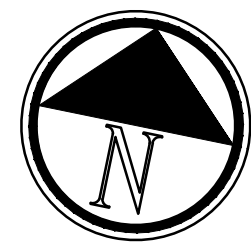
PROPOSED 2
STORY ADDITION
(PHASE III
CONSTRUCTION)

PROPOSED 2
STORY ADDITION
(PHASE III
CONSTRUCTION)

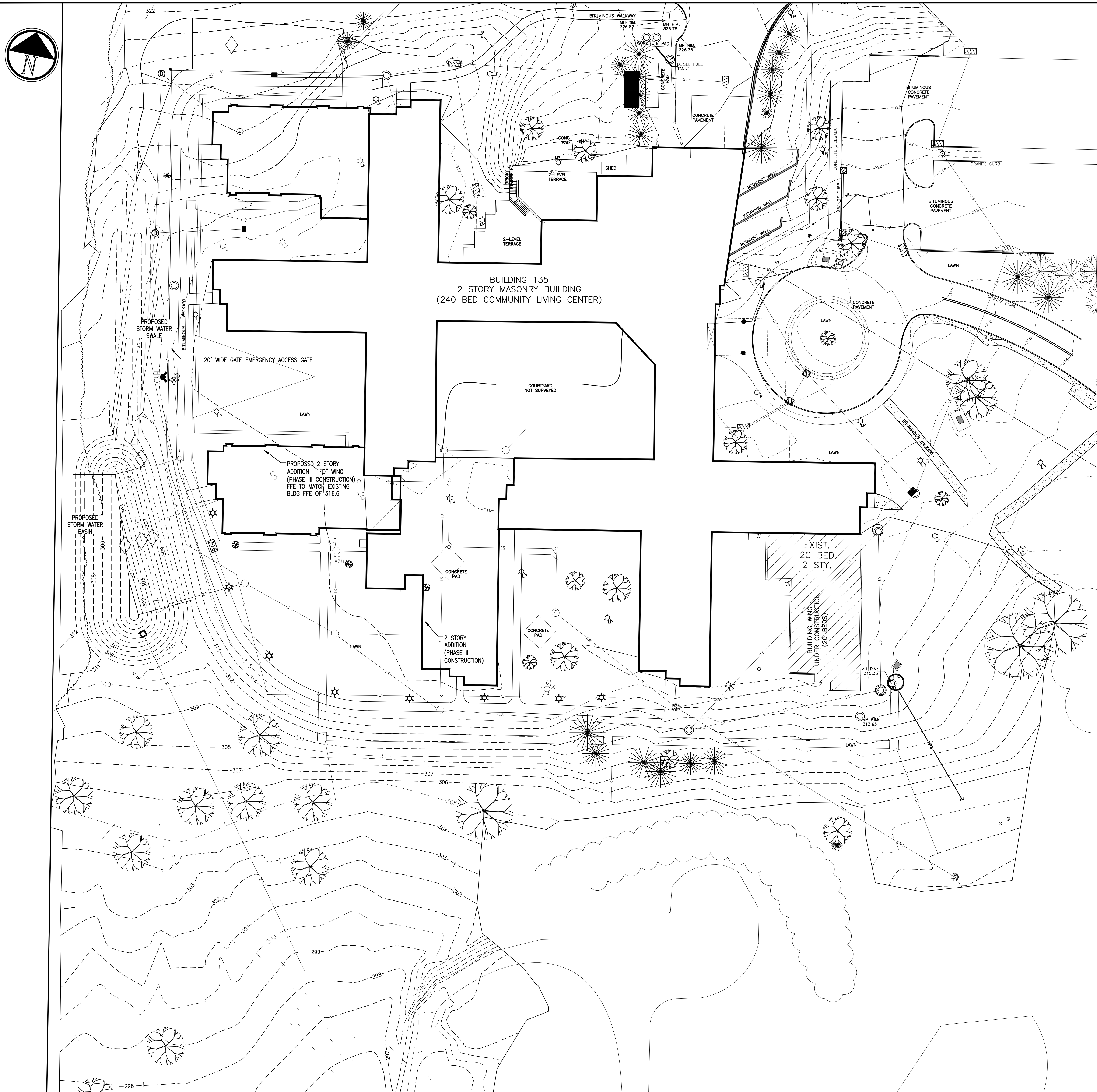
PROPOSED 2
STORY ADDITION
(PHASE II
CONSTRUCTION)

EXIST.
20 BED
2 STY.

BUILDING WING
UNDER CONSTRUCTION
(20 BEDS)



three inches = one foot
one and one half inches = one foot
one inch = one foot
three quarters inch = one foot
one half inch = one foot
three eighths inch = one foot
one quarter inch = one foot
one eighth inch = one foot
one sixteenth inch = one foot



LEGEND

- EXISTING FEATURES
- SANITARY MANHOLE
 - STORM INLET
 - FIRE HYDRANT
 - WATER VALVE
 - UTILITY POLE
 - SIGN
 - LIGHT POLE
 - SANITARY SEWER
 - STORM WATER PIPE
 - UNDERGROUND WATER LINE
 - FENCE LINE
 - CONTOUR - MINOR
 - CONTOUR - MAJOR
- PROPOSED FEATURES (PHASE III CONSTRUCTION)
- CONTOUR - FINISHED
 - STORM WATER PIPE
 - DRAINAGE MANHOLE
 - FENCE LINE
 - UNDERGROUND WATER LINE
 - PROPOSED SPOT ELEVATIONS

GENERAL NOTES:

- CONSULT SHEET WC-GS-002 FOR VERTICAL DATUM RELATING TO INVERTS AND RIM ELEVATIONS OF EXISTING CATCH BASINS, STORM PIPES, STORM MANHOLES, SEWER MANHOLES, WATER MANHOLES, AND OTHER SUCH STRUCTURES.
- ALL VERTICAL DATUM BASED ON NGVD 1929.
- EXISTING SITE SHOWN ON THIS SHEET IS BASED ON THE EXISTING SURVEY, AS SHOWN ON SHEET WC-GS-002, WITH ADDITIONAL INCORPORATION OF DATA FROM THE PHASE II PROJECT PLANS "CLC ADDITIONS AND ALTERATIONS-PHASE II" PLAN SET, PREPARED BY NADASKAY KOFELSON ARCHITECTS, "SITE, UTILITY & GRADING PLAN", DATED 6/15/2011.
- CONTRACTOR TO VERIFY ALL ELEVATION AND LOCATION DATA OF ALL UTILITIES, STORM WATER, SANITARY SEWER AND OTHER SUCH SYSTEMS BEFORE THE BEGINNING OF ANY CONSTRUCTION ACTIVITIES.

1 PLANNED EXISTING CONDITIONS (POST PHASE III CLC BLDG 135 CONSTRUCTION)
1"=30'

100% CONSTRUCTION DOCUMENTS

REV	REVISION DESCRIPTION	DATE
2	SOMERSET SOIL CONS. DIST. APPROVAL	03/08/13
1	SOMERSET CNTY STORM WATER REVIEW	02/20/13

CONSULTANTS:

MARK D. FELLENER, P.E.

Mark D. Fellenzer

NJ PROFESSIONAL ENGINEER
NO. 24GE04661500

ENGINEERS:

FELLENER
ENGINEERING LLP

FE PROJECT #: 11-348
22 Mulberry St., Suite 2A, Middletown, NY 10940
1 845-343-1481 fx 845-343-4986
181 Church St., Suite 100, Poughkeepsie, NY 12601
1 845-454-9704 fx 855-320-8735

UNAUTHORIZED ALTERATION OR ADDITION TO A PLAN BEARING A LICENSED PROFESSIONAL ENGINEER'S SEAL IS A VIOLATION OF STATE EDUCATION LAW.

Drawing Title

SITE PLAN:
EXISTING CONDITIONS III

Approved: Project Director

Project Title

WEST CAMPUS:
STORM WATER IMPROVEMENTS

Location

V.A.M.C. LYONS, NJ

Date

08/01/12

Checked

MDF

Drawn

SAR

Project Number

561A4-12-108

Building Number

WEST CAMPUS

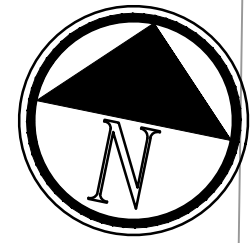
Drawing Number

WC-GS-004

Dwg. 5 of 10

Office of
Construction
and Facilities
Management

Department of
Veterans Affairs



three inches = one foot

one and one half inches = one foot

one inch = one foot

one inch = one foot

three quarters inch = one foot

one half inch = one foot

one half inch = one foot

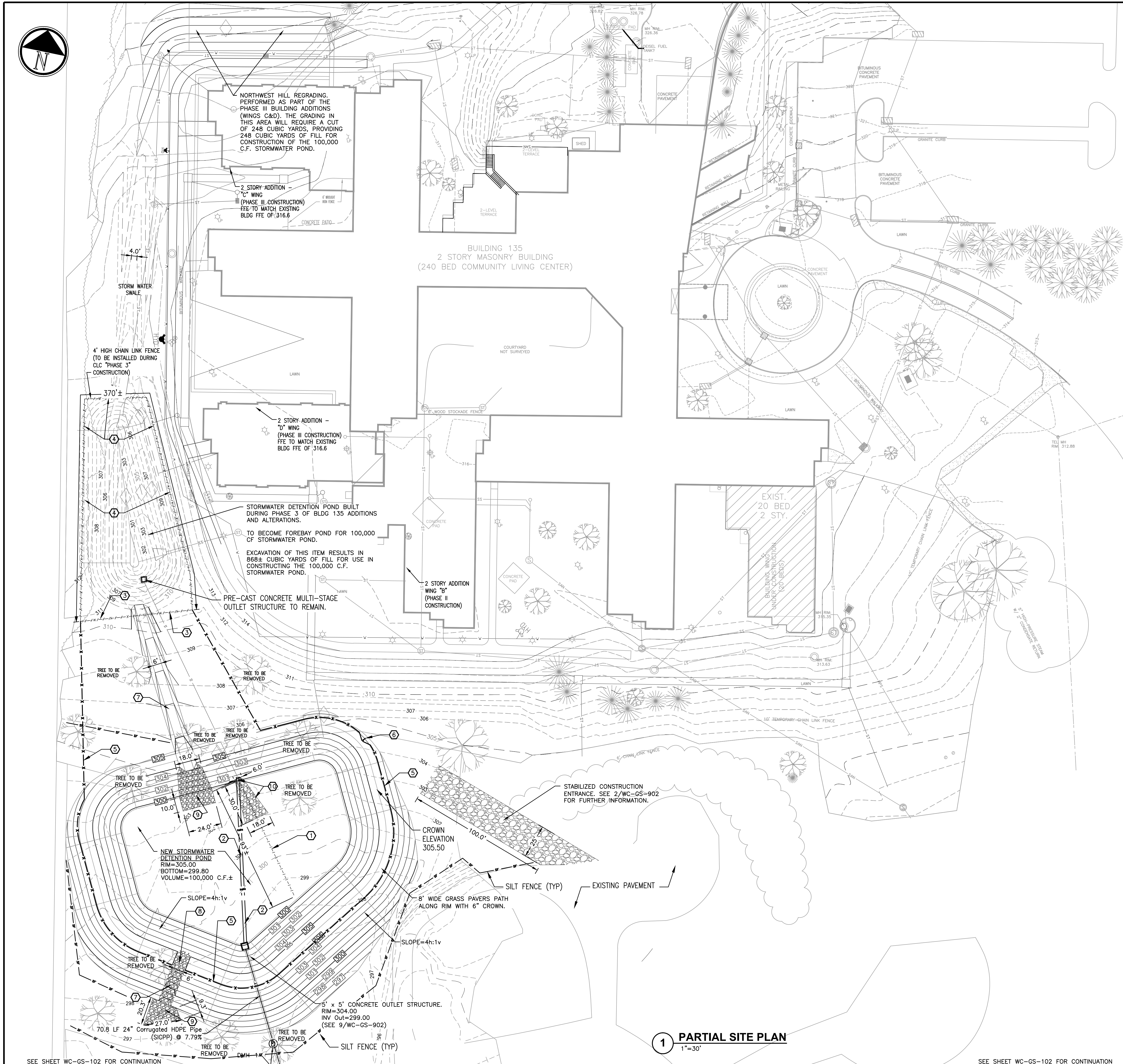
three eighths inch = one foot

one quarter inch = one foot

one eighth inch = one foot

one eighth inch = one foot

one eighth inch = one foot



SEE SHEET WC-GS-102 FOR CONTINUATION

SEE SHEET WC-GS-102 FOR CONTINUATION

REV	REVISION DESCRIPTION	DATE
2	SOMERSET SOIL CONS. DIST. APPROVAL	03/08/13
1	SOMERSET CNTY STORM WATER REVIEW	02/20/13

CONSULTANTS:	
MARK D. FELLENER, P.E.	
NJ PROFESSIONAL ENGINEER NO. 24GE04661500	

ENGINEERS:	
FELLENER ENGINEERING LLP	
FE PROJECT #: 11-348	
22 Mulberry St., Suite 2A, Middletown, NY 10940 1 845-343-1481 fx 845-343-4986	181 Church St., Suite 100, Poughkeepsie, NY 12601 1 845-454-9704 fx 855-320-8735
UNAUTHORIZED ALTERATION OR ADDITION TO A PLAN BEARING A LICENSED PROFESSIONAL ENGINEER'S SEAL IS A VIOLATION OF STATE EDUCATION LAW.	

Drawing Title	SITE PLAN: PARTIAL SITE PLAN
Approved: Project Director	

Project Title WEST CAMPUS: STORM WATER IMPROVEMENTS			Project Number 561A4-12-108
Location V.A.M.C. LYONS, NJ			Building Number WEST CAMPUS
Date 08/01/12	Checked MDF	Drawn SAR	Drawing Number WC-GS-101 Dwg. 6 of 10

Office of
Construction
and Facilities
Management

Department of
Veterans Affairs

GENERAL NOTES:

- CONSULT SHEET WC-GS-002 FOR VERTICAL DATUM RELATING TO INVERTS AND RIM ELEVATIONS OF EXISTING CATCH BASINS, STORM PIPES, STORM MANHOLES, SEWER MANHOLES, WATER MANHOLES, AND OTHER SUCH STRUCTURES.
- ALL VERTICAL DATUM BASED ON NGVD 1929.
- EXISTING SITE SHOWN ON THIS SHEET IS BASED ON THE EXISTING SURVEY, AS SHOWN ON SHEET WC-GS-002, WITH ADDITIONAL INCORPORATION OF DATA FROM THE PHASE II PROJECT PLANS "CLC ADDITIONS AND ALTERATIONS-PHASE II" PLAN SET, PREPARED BY NADASKAY KOFELSON ARCHITECTS, "SITE, UTILITY & GRADING PLAN", DATED 6/15/2011 AND ALSO INCORPORATES THE FINISHED (DESIGNED) SURFACE THAT WILL BE PRESENT AT THE END OF THE PHASE III CONSTRUCTION PERIOD (BUILDING WING ADDITIONS "C" & "D").
- CONTRACTOR TO VERIFY ALL ELEVATION AND LOCATION DATA OF ALL UTILITIES, STORM WATER, SANITARY SEWER AND OTHER SUCH SYSTEMS BEFORE THE BEGINNING OF ANY CONSTRUCTION ACTIVITIES.

DETENTION POND NOTES

- FILL NEEDED TO CONSTRUCT POND SHALL BE SUPPLIED FROM THE CUT REQUIRED FOR POND, PLUS THE FILL OBTAINED FROM PHASE 3 CONSTRUCTION OF BUILDING 135 "CLC ALTERATIONS AND ADDITIONS" GARDING FOR THE NORTH HILL, WESTERN SWALE ALONG BLDG 135 AND THE RENOVATION TO THE EXISTING STORM WATER POND.
- CONSTRUCTION OF STORMWATER DETENTION POND SHALL TAKE PLACE UPON COMPLETION OF THE PHASE 3 CONSTRUCTION FOR BLDG 135. CLC ADDITIONS AND ALTERATIONS. OR AT SUCH POINT WHERE THE VA HAS GIVEN PERMISSION FOR CONSTRUCTION TO BEGIN AFTER THE FILL FROM THE BUILDING 135 PHASE 3 CONSTRUCTION BECOMES AVAILABLE FOR USE.

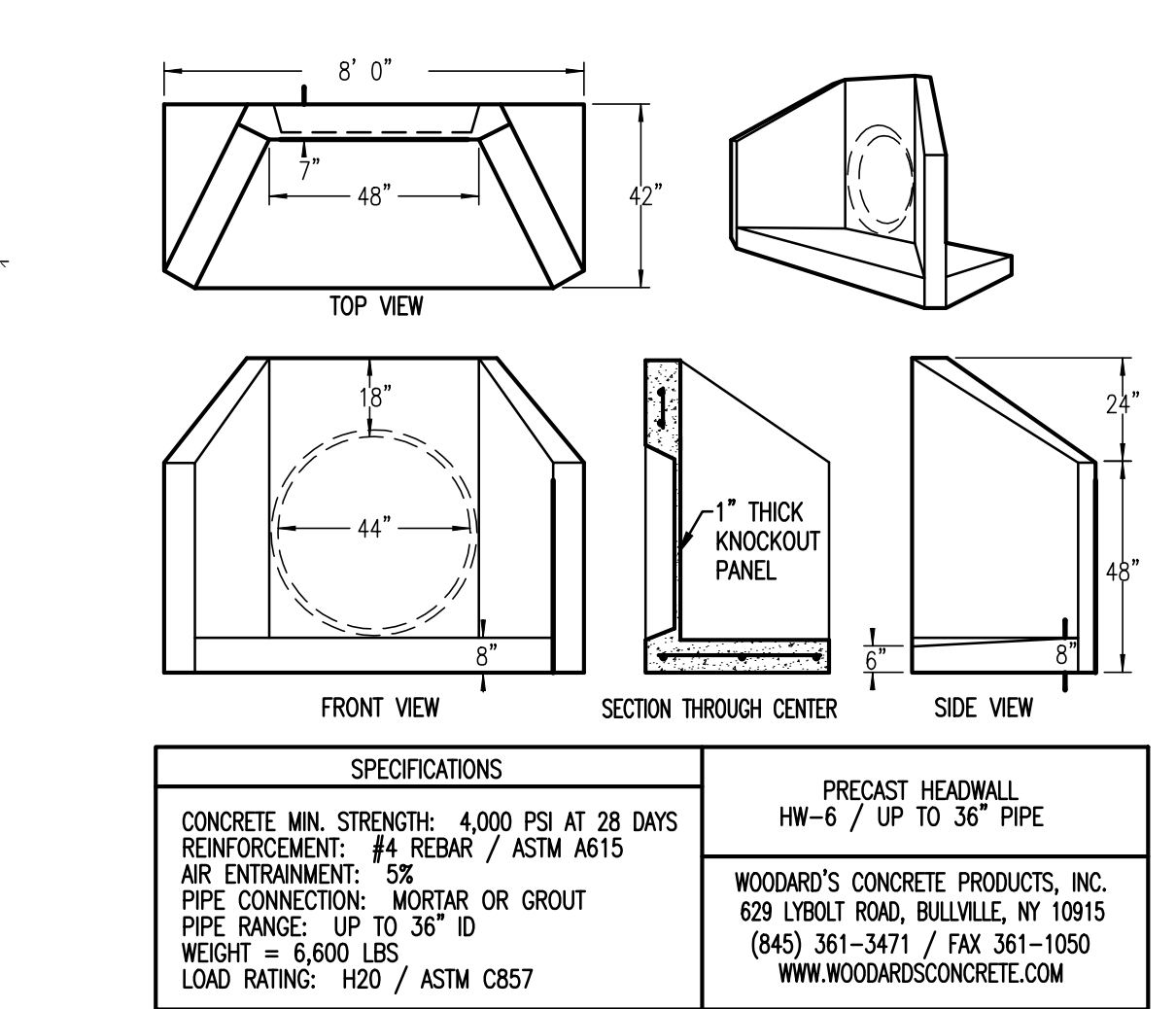
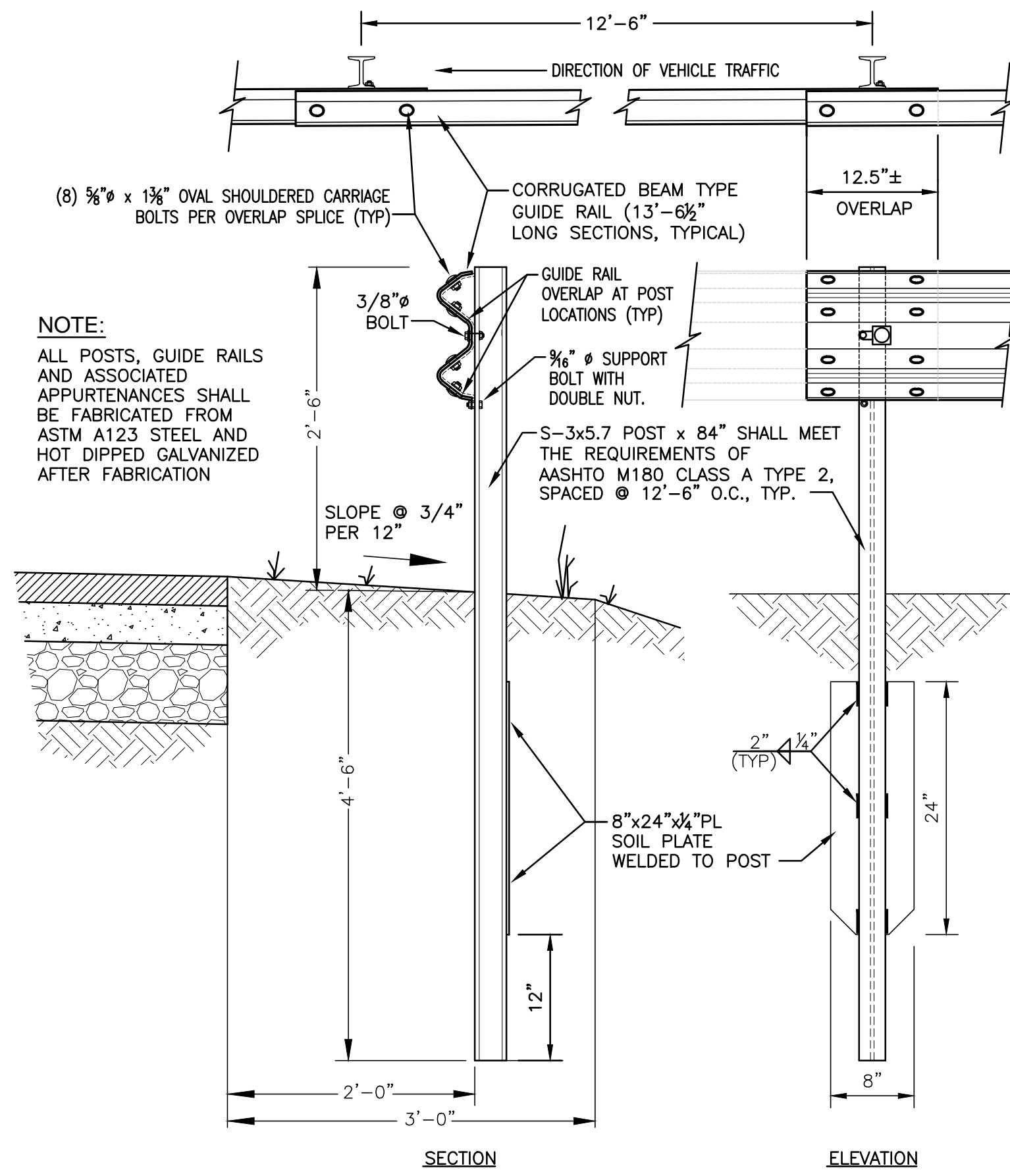
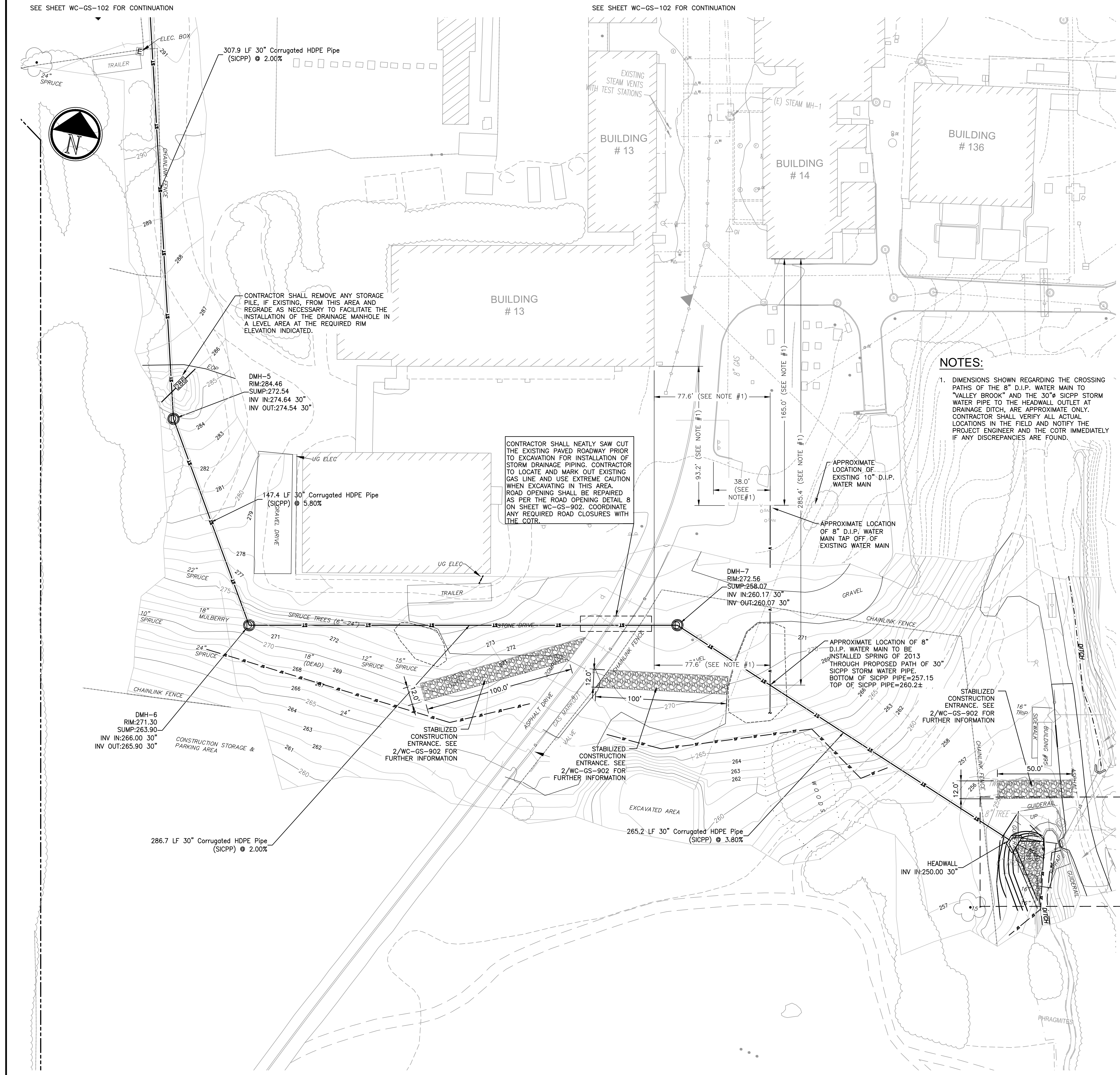
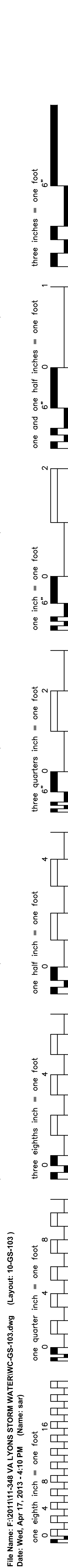
LEGEND

EXISTING FEATURES	
	SANITARY MANHOLE
	STORM INLET
	FIRE HYDRANT
	WATER VALVE
	UTILITY POLE
	SIGN
	LIGHT POLE
	SANITARY SEWER
	STORM WATER PIPE
	UNDERGROUND WATER LINE
	FENCE LINE
	312 CONTOUR - MINOR
	315 CONTOUR - MAJOR
PROPOSED FEATURES (PHASE II CONSTRUCTION)	
	312 CONTOUR - MAJOR
	315 CONTOUR - MINOR
	STORM WATER PIPE
	DRAINAGE MANHOLE
	CATCH BASIN
	FENCE LINE
	UNDERGROUND WATER LINE
	SILT FENCE
	PROPOSED SPOT ELEVATIONS

KEYED NOTES

- PORTION OF EXISTING 24" RCP TO BE EXCAVATED AND REMOVED. UPON APPROVAL OF THE ENGINEER, CONTRACTOR MAY REUSE PIPING IF ABLE TO ELESWHERE ON THIS PROJECT, AND SHALL ISSUE A CREDIT FOR SAME TO THE VA.
- INSTALL TEMPORARY 24" RCP PIPE CONDUIT FROM 24" OUTLET OF POND #1 LOCATED INSIDE POND POND #2 TO TEMPORARY 24" ORIFICE OF POND #2 OUTLET STRUCTURE. TEMPORARY RCP PIPING SHALL BE KEPT SECURELY IN PLACE BY MEANS OF GRAVEL BERMS WITH A MAX SLOPE OF 2H:1V WITH A MINIMUM HEIGHT OF 1/2 PIPE DIAMETER ALONG BOTH SIDES OF PIPE FOR THE ENTIRE PIPE LENGTH.
- IF EXISTING AT TIME OF CONSTRUCTION, PORTION OF 4' HIGH CHAIN LINK FENCING TO BE REMOVED AND PROPERLY DISCARDED.
- IF EXISTING AT TIME OF CONSTRUCTION, PORTION OF 4' HIGH CHAIN LINK FENCE TO BE REMOVED AND REPLACED WITH 10' CHAIN LINK FENCING. IF NO FENCING EXISTS IN THIS AREA, INSTALL 10' HIGH CHAIN LINK FENCING. SEE DETAIL 7/WC-GS-901 FOR FURTHER INFORMATION.
- 10' HIGH CHAIN LINK FENCING. SEE DETAIL 7/WC-GS-901 FOR FURTHER INFORMATION.
- 12' WIDE x 10' HIGH CHAIN LINK DOUBLE-LEAF GATE. SEE DETAIL 7/WC-GS-901 FOR FURTHER INFORMATION.
- 6' WIDE RIP-RAP SWALE. SEE 14/WC-GS-902 FOR FURTHER INFORMATION.
- 6' WIDE EMERGENCY SPILLWAY OPENING IN POND BERM. SEE DETAIL 13/WC-GS-902 FOR FURTHER INFORMATION.
- 4" D60 RIP-RAP OUTLET PROTECTION. SEE 7/WC-GS-902 FOR FURTHER INFORMATION.
- UPON COMPLETION & STABILIZATION OF POND #2, REMOVE TEMPORARY 24" RCP STORM PIPE INSTALLED IN KEY NOTE #2 AND INSTALL FLARED END SECTION WITH INVERT OF 300.00 TO END OF EXISTING RCP STORM PIPE TO REMAIN, AND INSTALL 6" D60 RIP RAP APRON 30' LONG, 18' WIDE AT APRON END, WITH BEGINNING WIDTH OF 3X PIPE DIAMETER. SEE 7/WC-GS-902 FOR MORE INFORMATION.

File Name: F:\001111\348 VALYONS STORM WATER\WC-GS-103.dwg (Layout: 10-GS-103)
Date: Wed, Apr 17, 2013 4:10 PM (Name: sar)



- HEADWALL OUTLET AREA - KEYED NOTES**
- 1 REMOVE PORTION OF EXISTING GUIDE RAIL AS SHOWN AND DISPOSE OF PROPERLY
 - 2 NEW GUIDE RAIL SEE DETAIL FOR FURTHER INFORMATION.
 - 3 NEW CONCRETE HEADWALL FOR 30" SICPP OUTLET PIPE FROM STORM WATER SYSTEM.
 - 4 NEW D=12" RIP RAP DISCHARGE APRON.



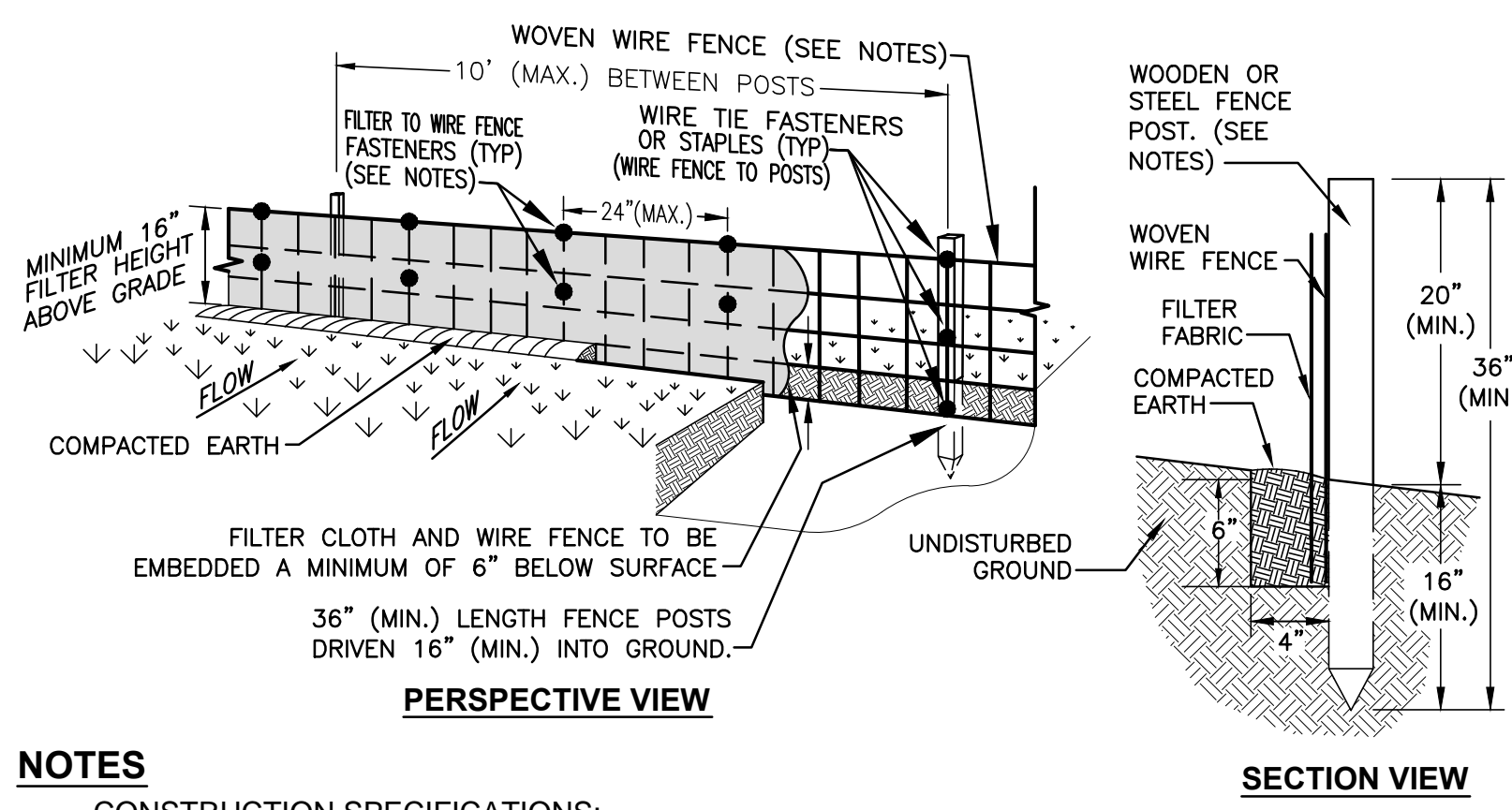
1 PARTIAL SITE PLAN
1"=30'

2 HEADWALL OUTLET AREA
1"=10'

--	--	--	--	--	--	--	--	--	--	--	--	--	--	--	--	--	--	--	--	--	--	--	--	--	--	--	--	--	--	--	--	--	--	--	--	--	--	--	--	--	--	--	--	--	--	--	--	--	--	--	--	--	--	--	--	--	--	--	--	--	--	--	--	--	--	--	--	--	--	--	--	--	--	--	--	--	--	--	--	--	--	--	--	--	--	--	--	--	--	--	--	--	--	--	--	--	--	--	--	--	--	--	--	--	--	--	--	--	--	--	--	--	--	--	--	--	--	--	--	--	--	--	--	--	--	--	--	--	--	--	--	--	--	--	--	--	--	--	--	--	--	--	--	--	--	--	--	--	--	--	--	--	--	--	--	--	--	--	--	--	--	--	--	--	--	--	--	--	--	--	--	--	--	--	--	--	--	--	--	--	--	--	--	--	--	--	--	--	--	--	--	--	--	--	--	--	--	--	--	--	--	--	--	--	--	--	--	--	--	--	--	--	--	--	--	--	--	--	--	--	--	--	--	--	--	--	--	--	--	--	--	--	--	--	--	--	--	--	--	--	--	--	--	--	--	--	--	--	--	--	--	--	--	--	--	--	--	--	--	--	--	--	--	--	--	--	--	--	--	--	--	--	--	--	--	--	--	--	--	--	--	--	--	--	--	--	--	--	--	--	--	--	--	--	--	--	--	--	--	--	--	--	--	--	--	--	--	--	--	--	--	--	--	--	--	--	--	--	--	--	--	--	--	--	--	--	--	--	--	--	--	--	--	--	--	--	--	--	--	--	--	--	--	--	--	--	--	--	--	--	--	--	--	--	--	--	--	--	--	--	--	--	--	--	--	--	--	--	--	--	--	--	--	--	--	--	--	--	--	--	--	--	--	--	--	--	--	--	--	--	--	--	--	--	--	--	--	--	--	--	--	--	--	--	--	--	--	--	--	--	--	--	--	--	--	--	--	--	--	--	--	--	--	--	--	--	--	--	--	--	--	--	--	--	--	--	--	--	--	--	--	--	--	--	--	--	--	--	--	--	--	--	--	--	--	--	--	--	--	--	--	--	--	--	--	--	--	--	--	--	--	--	--	--	--	--	--	--	--	--	--	--	--	--	--	--	--	--	--	--	--	--	--	--	--	--	--	--	--	--	--	--	--	--	--	--	--	--	--	--	--	--	--	--	--	--	--	--	--	--	--	--	--	--	--	--	--	--	--	--	--	--	--	--	--	--	--	--	--	--	--	--	--	--	--	--	--	--	--	--	--	--	--	--	--	--	--	--	--	--	--	--	--	--	--	--	--	--	--	--	--	--	--	--	--	--	--	--	--	--	--	--	--	--	--	--	--	--	--	--	--	--	--	--	--	--	--	--	--	--	--	--	--	--	--	--	--	--	--	--	--	--	--	--	--	--	--	--	--	--	--	--	--	--	--	--	--	--	--	--	--	--	--	--	--	--	--	--	--	--	--	--	--	--	--	--	--	--	--	--	--	--	--	--	--	--	--	--	--	--	--	--	--	--	--	--	--	--	--	--	--	--	--	--	--	--	--	--	--	--	--	--	--	--	--	--	--	--	--	--	--	--	--	--	--	--	--	--	--	--	--	--	--	--	--	--	--	--	--	--	--	--	--	--	--	--	--	--	--	--	--	--	--	--	--	--	--	--	--	--	--	--	--	--	--	--	--	--	--	--	--	--	--	--	--	--	--	--	--	--	--	--	--	--	--	--	--	--	--	--	--	--	--	--	--	--	--	--	--	--	--	--	--	--	--	--	--	--	--	--	--	--	--	--	--	--	--	--	--	--	--	--	--	--	--	--	--	--	--	--	--	--	--	--	--	--	--	--	--	--	--	--	--	--	--	--	--	--	--	--	--	--	--	--	--	--	--	--	--	--	--	--	--	--	--	--	--	--	--	--	--	--	--	--	--	--	--	--	--	--	--	--	--	--	--	--	--	--	--	--	--	--	--	--	--	--	--	--	--	--	--	--	--	--	--	--	--	--	--	--	--	--	--	--	--	--	--	--	--	--	--	--	--	--	--	--	--	--	--	--	--	--	--	--	--	--	--	--	--	--	--	--	--	--	--	--	--	--	--	--	--	--	--	--	--	--	--	--	--	--	--	--	--	--	--	--	--	--	--	--	--	--	--	--	--	--	--	--	--	--	--	--	--	--	--	--	--	--	--	--	--	--	--	--	--	--	--	--	--	--	--	--	--	--	--	--	--	--	--	--	--	--	--	--	--	--	--	--	--	--	--	--	--	--	--	--	--	--	--	--	--	--	--	--	--	--	--	--	--	--	--	--	--	--	--	--	--	--	--	--	--	--	--	--	--	--	--	--	--	--	--	--	--	--	--	--	--	--	--	--	--	--	--	--	--	--	--	--	--	--	--	--	--	--	--	--	--	--	--	--	--	--	--	--	--	--	--	--	--	--	--	--	--	--	--	--	--	--	--	--	--	--	--	--	--	--	--	--	--	--	--	--	--	--	--	--	--	--	--	--	--	--	--	--	--	--	--	--	--	--	--	--	--	--	--	--	--	--	--	--	--	--	--	--	--	--	--	--	--	--	--	--	--	--	--	--	--	--	--	--	--	--	--	--	--	--	--	--	--	--	--	--	--	--	--	--	--	--	--	--	--	--	--	--	--	--	--	--	--	--	--	--	--	--	--	--	--	--	--	--	--	--	--	--	--	--	--	--	--	--	--	--	--	--	--	--	--	--	--	--	--	--	--	--	--	--	--	--	--	--	--	--	--	--	--	--	--	--	--	--	--	--	--	--	--	--	--	--	--	--	--	--	--	--	--	--	--	--	--	--	--	--	--	--	--	--	--	--	--	--	--	--	--	--	--	--	--	--	--	--	--	--	--	--	--	--	--	--	--	--	--	--	--	--	--	--	--	--	--	--	--	--	--	--	--	--	--	--	--	--	--	--	--	--	--	--	--	--	--	--	--	--	--	--	--	--	--	--	--	--	--	--	--	--	--	--	--	--	--	--	--	--	--	--	--	--	--	--	--	--	--	--	--	--	--	--	--	--	--	--	--	--	--	--	--	--	--	--	--	--	--	--	--	--	--	--	--	--	--	--	--	--	--	--	--	--	--	--	--	--	--	--	--	--	--	--	--	--

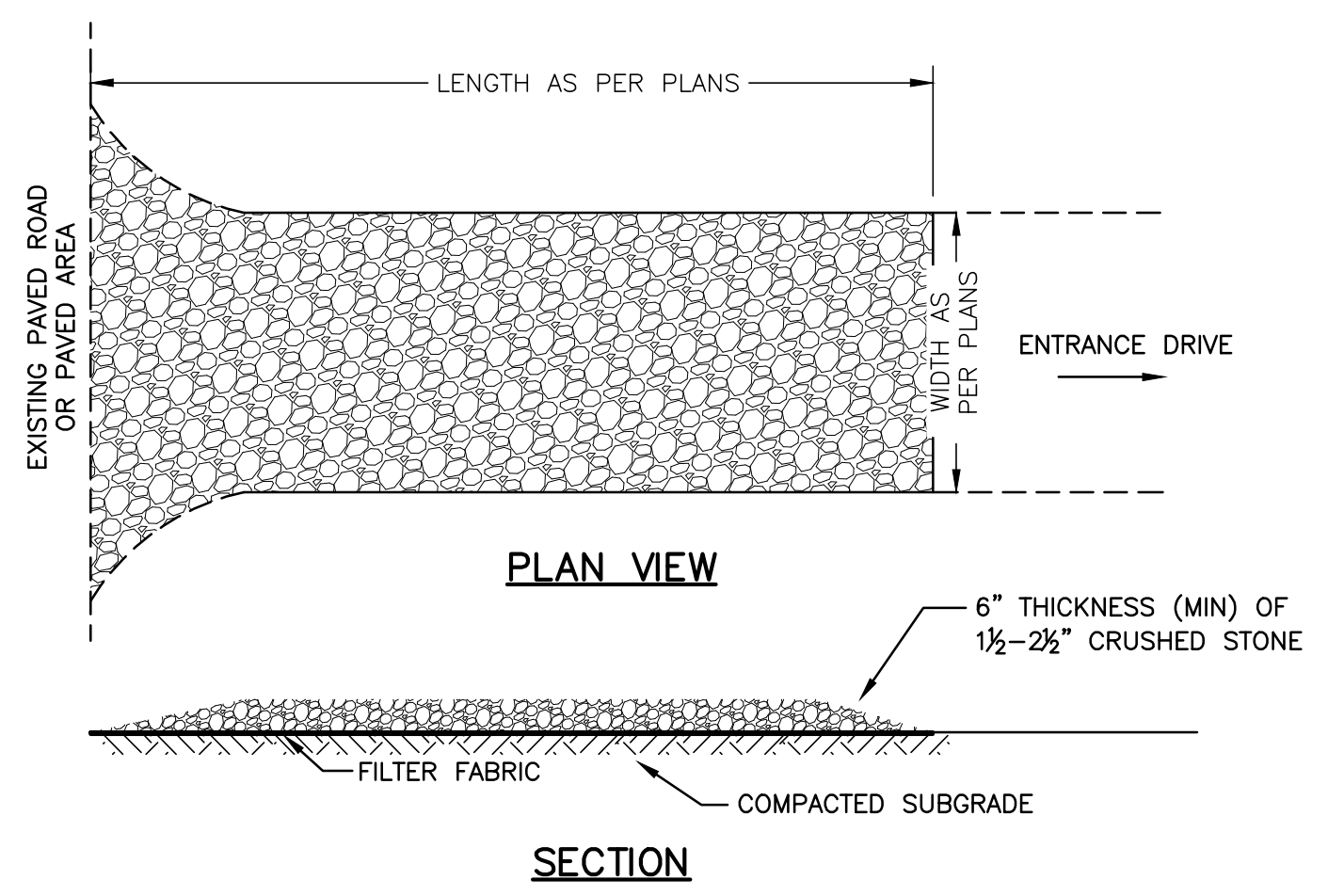


File Name: F:\2011\11-348 VALYONS STORM WATER\WC-GS-902.dwg (Layout: 10-GS-902)
Date: Fri, Mar 08, 2013 - 1:17 PM (Name: sar)



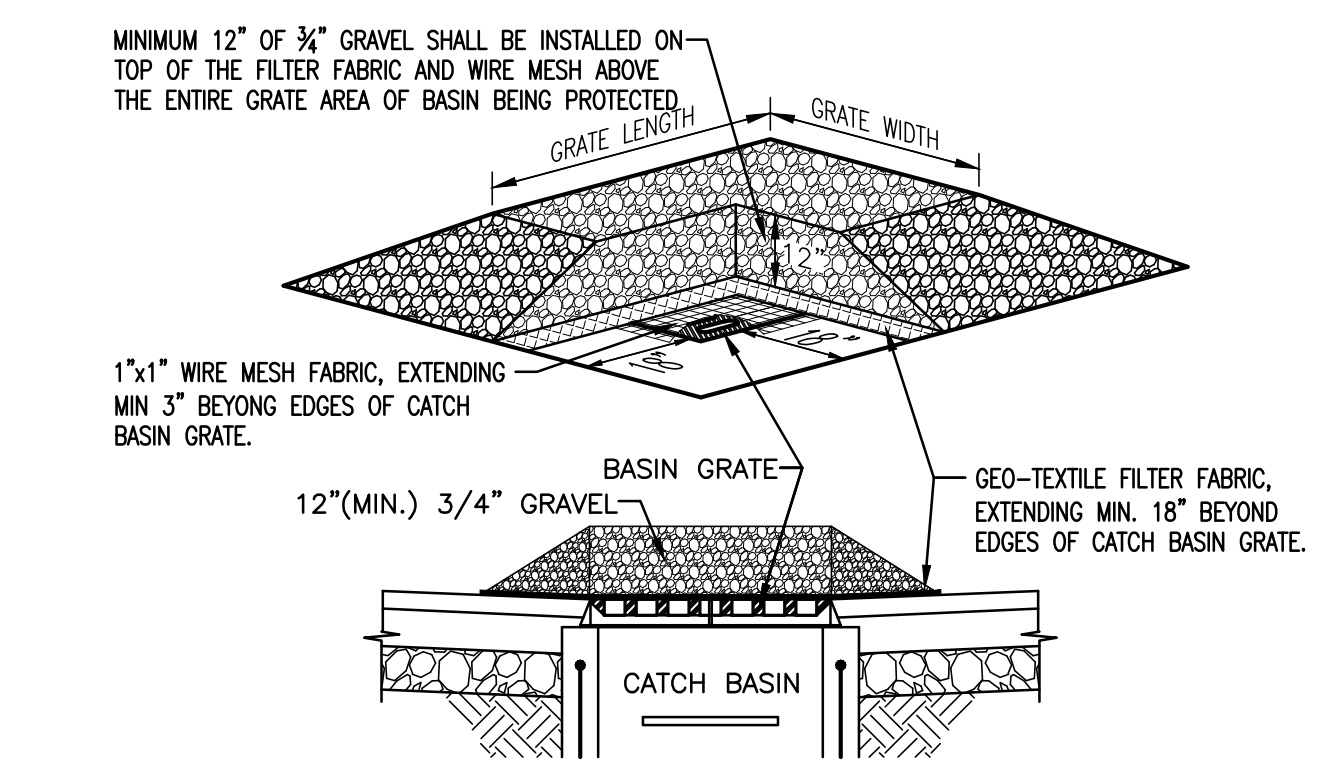
- NOTES**
- CONSTRUCTION SPECIFICATIONS:**
1. WOVEN WIRE FENCE SHALL BE 12 GAUGE WITH A MAXIMUM MESH OPENING OF 6", AND SHALL BE FASTENED SECURELY TO FENCE POSTS WITH STAPLES, WIRE TIES OR NYLON ZIP TIES.
 2. FENCE POSTS SHALL BE EITHER STEEL (1" OR 1 1/2" TYPE) OR HARDWOOD (2"x2"). POSTS SHALL BE MINIMUM 36" IN LENGTH AND INSTALLED WITH A MINIMUM 16" OF EMBEDMENT, WITH A MAXIMUM OF 10' O.C. BETWEEN POSTS.
 3. FILTER CLOTH SHALL BE EITHER FILTER X, MIRAFI 100X, STABILUNA 1140N, OR AN APPROVED EQUAL, AND SHALL BE FASTENED SECURELY TO WOVEN WIRE FENCE WITH WIRE TIES OR NYLON ZIP TIES SPACED EVERY 24" AT TOP AND MID SECTION OF FILTER FABRIC.
 4. WHEN TWO SECTIONS OF FILTER CLOTH ADJOIN EACH OTHER THEY SHALL BE OVER-LAPPED BY SIX INCHES AND FOLDED, WITH THE OVER-LAP BEING SECURELY FASTENED TO THE WOVEN WIRE FENCE AS PER NOTE #3 ABOVE.
 5. AT END POSTS OF SILT FENCE, THE FILTER FABRIC SHALL BE WRAPPED AROUND THE POST AND APPROPRIATELY FASTENED AS PER NOTE #3 ABOVE.
 6. PREFABRICATED SILT FENCE UNITS SHALL BE GEOTAF, ENVROFENCE, OR AN APPROVED EQUAL.
 7. MAINTENANCE SHALL BE PERFORMED AS NEEDED AND MATERIAL (SEDIMENT) REMOVED WHEN "BULGES" DEVELOP IN THE SILT FENCE.

1 SILT FENCE W/ WIRE REINFORCEMENT DETAIL
N.T.S.



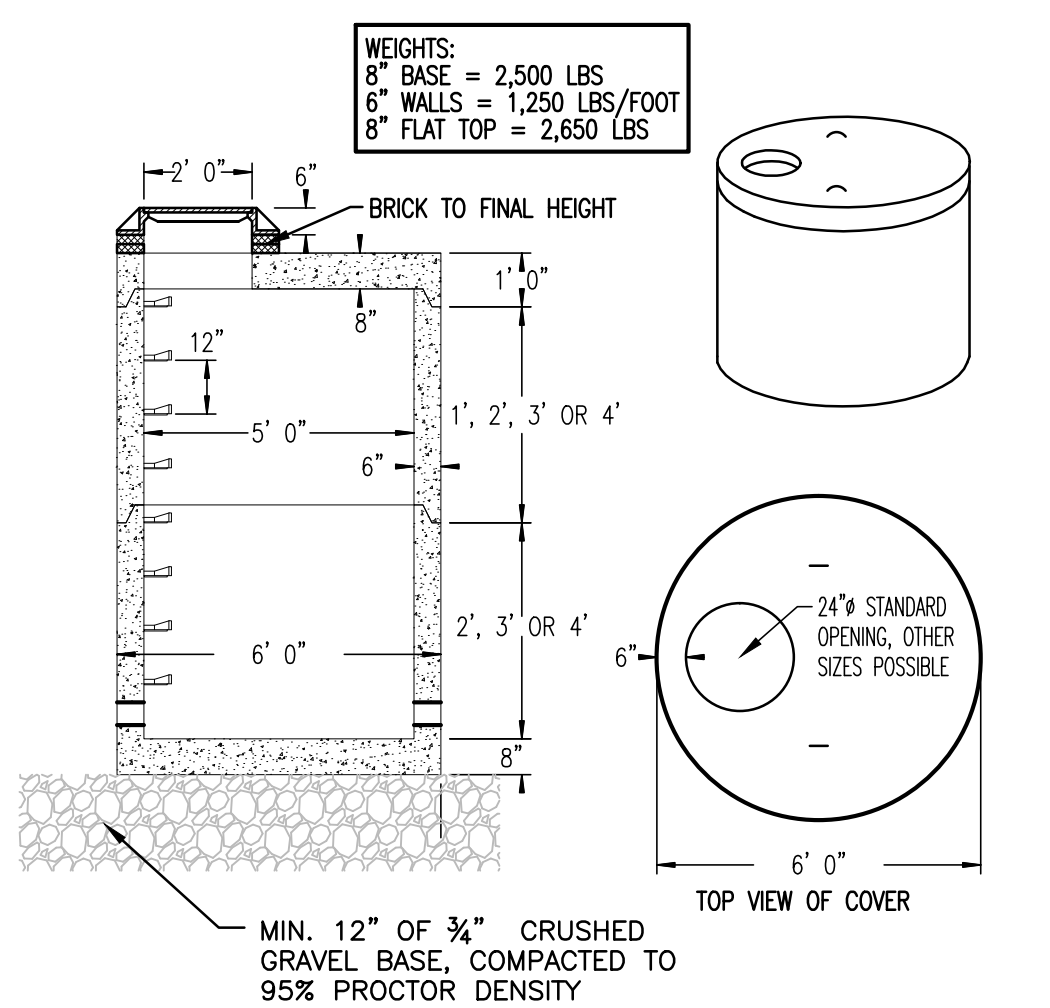
1. SUBGRADE OF ENTRANCE AREA SHALL BE COMPACTED, AND COVERED WITH FILTER FABRIC (TREVIRA #1127 OR APPROVED EQUAL) AND COVERED WITH A MINIMUM THICKNESS OF 6" OF 2 1/2"-1 1/2" CRUSHED STONE GRAVEL.
2. ALL DRIVEWAYS AND/OR ENTRANCES TO DISTURBED AREAS OF THE SITE MUST BE STABILIZED PRIOR TO ANY CONSTRUCTION AND OR CLEARING OF SITE.
3. STABILIZED CONSTRUCTION ENTRANCE SHALL BE MAINTAINED IN A CONDITION WHICH WILL PREVENT THE TRACKING OR FLOWING OF SEDIMENT ONTO PUBLIC RIGHTS-OF-WAY, OR OTHER PAVED TRAVELED WAYS. ALL SEDIMENT SPILLED, DROPPED, WASHED OR TRACKED ONTO SUCH RIGHT-OF-WAYS OR TRAVELED PATHS SHALL BE REMOVED IMMEDIATELY.

2 STABILIZED CONSTRUCTION DRIVEWAY ENTRANCE DETAIL
N.T.S. FOR SINGLE RESIDENCE SITES



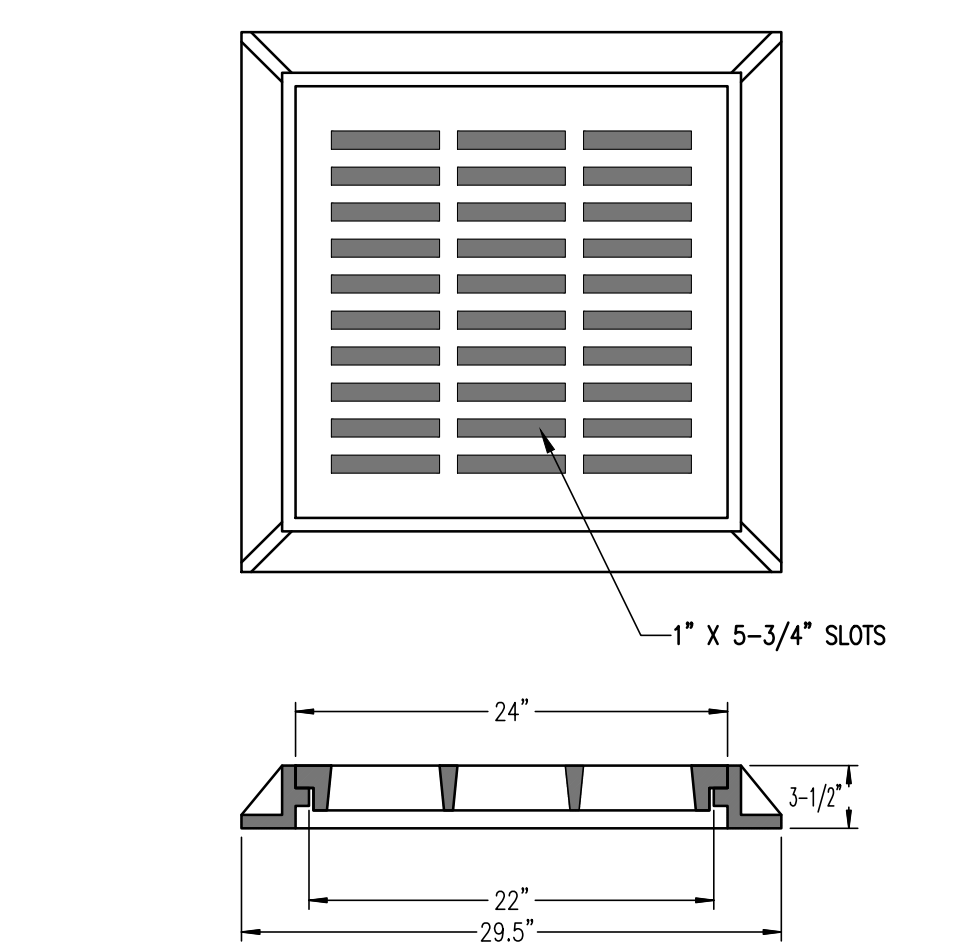
1. ALL EXISTING STORM WATER INLETS OR STRUCTURES NEAR PROJECT SITE (SEE PLANS FOR LOCATIONS REQUIRED) SHALL BE PROTECTED, INSPECTED AND HAVE MAINTENANCE PERFORMED ON A REGULAR BASIS AND AFTER EACH STORM.
2. ALL PROTECTED INLETS AND STRUCTURES SHALL BE INSPECTED FOR BUILDUP OF EXCESS SEDIMENT WHICH PREVENTS THE PROPER FLOW OF STORMWATER INTO THE INLET/STRUCTURE. WHEN SEDIMENT HAS CAUSED THE FLOW OF RUN-OFF TO BE REDUCED BY 50%, AND/OR TO A POINT WHERE RUN-OFF IS NOT BEING PROPERLY CAPTURED BY INLET/DEVICE, SEDIMENT CLOGGED GRAVEL SHALL BE REMOVED AND REPLACED WITH NEW CLEAN GRAVEL.
3. ALL STORM DRAINAGE OUTLETS WILL BE STABILIZED, AS REQUIRED, BEFORE DISCHARGE. POINTS BECOME OPERATIONAL.
4. ALL SEDIMENTATION STRUCTURES WILL BE INSPECTED AND MAINTAINED ON A REGULAR BASIS.

3 SEDIMENT PROTECTION FOR EXISTING CATCH BASIN
N.T.S.



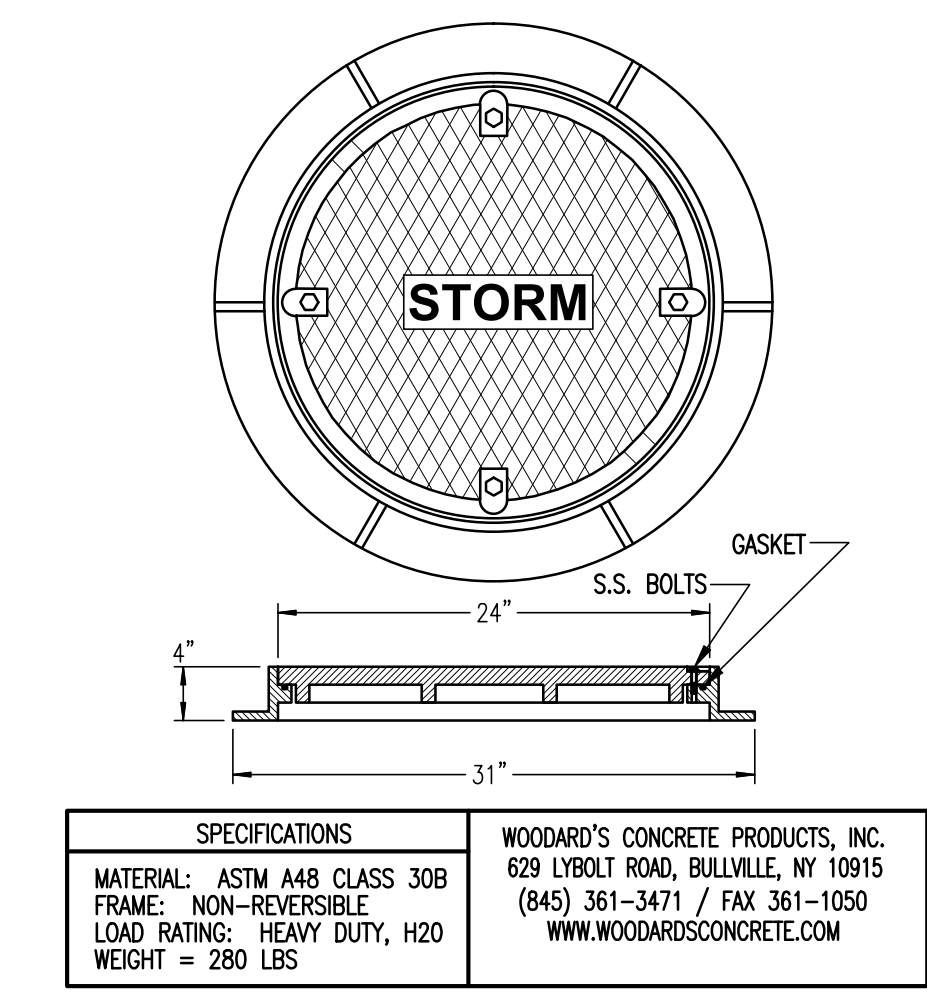
- SPECIFICATIONS**
- CONCRETE MIN. STRENGTH: 4,000 PSI AT 28 DAYS
REINFORCEMENT: 4X4 WIRE MESH / ASTM C478
AIR ENTRAINMENT: 5%
CONSTRUCTION JOINT: BUTYL RUBBER SEALANT
PIPE CONNECTIONS: RUBBER BOOTS AVAILABLE
LOAD RATING: H20 / ASTM C557
- WEIGHTS:**
8" BASE = 2,500 LBS
6" WALLS = 1,250 LBS/FOOT
8" FLAT TOP = 2,650 LBS
- PRECAST MANHOLES**
5' ID BASE, RISER & TOP
WOODARD'S CONCRETE PRODUCTS, INC.
629 LYBOLT ROAD, BALLVILLE, NY 10915
(845) 361-3471 / FAX 361-1050
WWW.WOODARDSCONCRETE.COM

4 PRECAST CONCRETE - HEAVY DUTY 5' ID - MANHOLE BASE, RISER AND TOP
N.T.S.

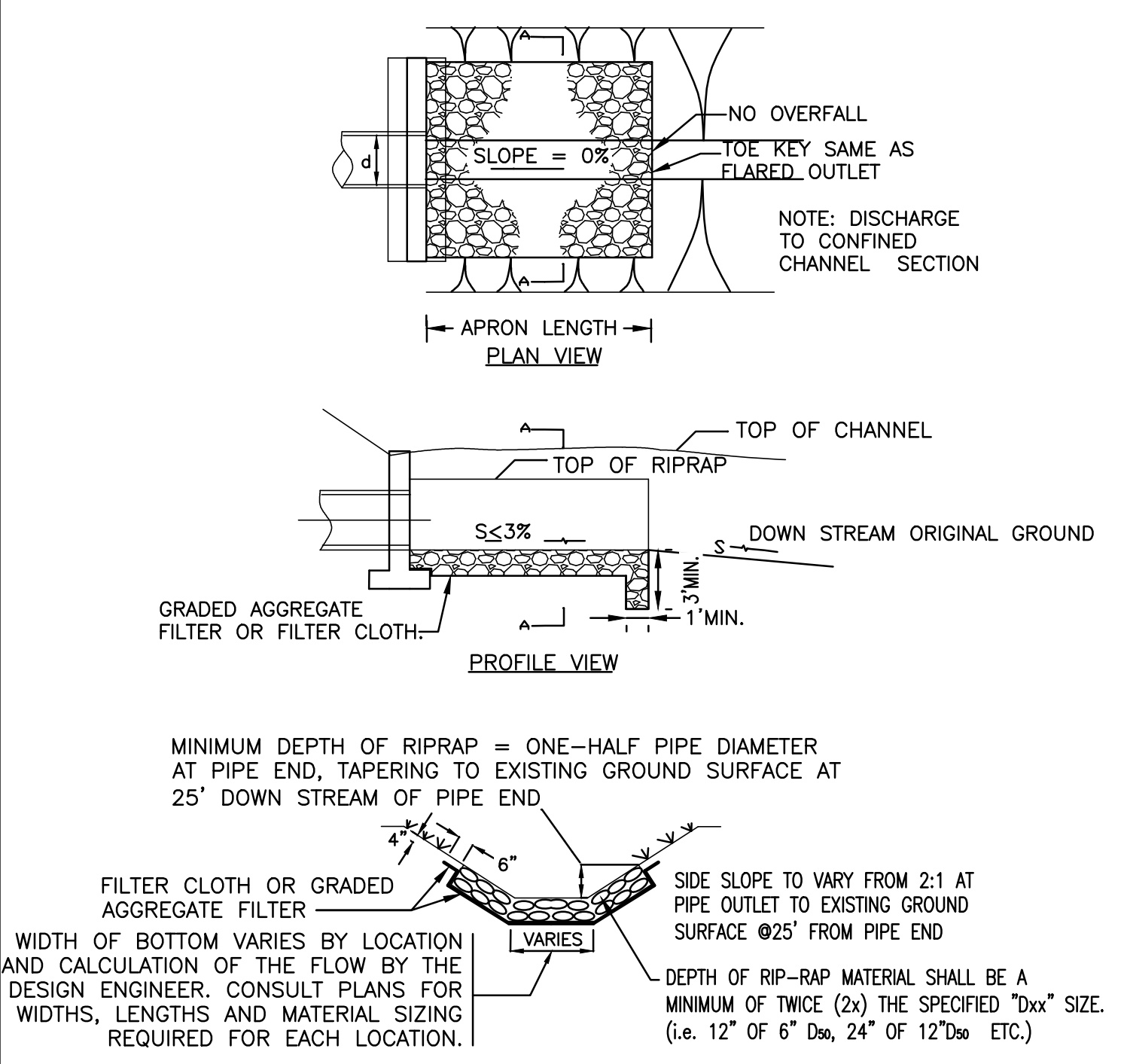


- SPECIFICATIONS**
- MATERIAL: ASTM A48 CLASS 30B
LOAD RATING: HEAVY DUTY, H20
WEIGHT = 300 LBS
DRAINAGE AREA = 175 SQUARE INCHES
- WOODARD'S CONCRETE PRODUCTS, INC.
629 LYBOLT ROAD, BALLVILLE, NY 10915
(845) 361-3471 / FAX 361-1050
WWW.WOODARDSCONCRETE.COM

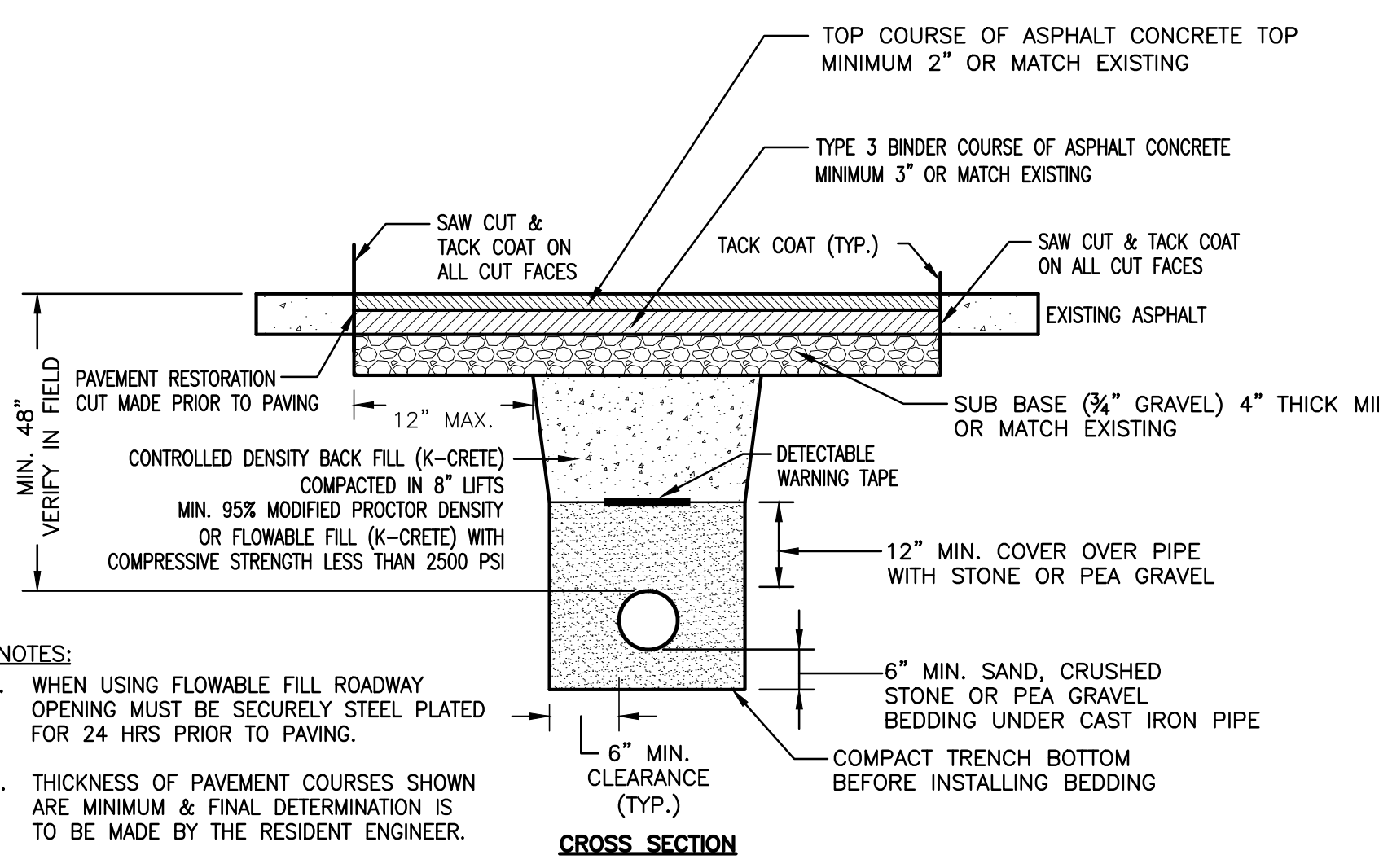
5 MODEL: GRATE-24X24X4 HEAVY DUTY CAST IRON FRAME & GRATE
N.T.S.



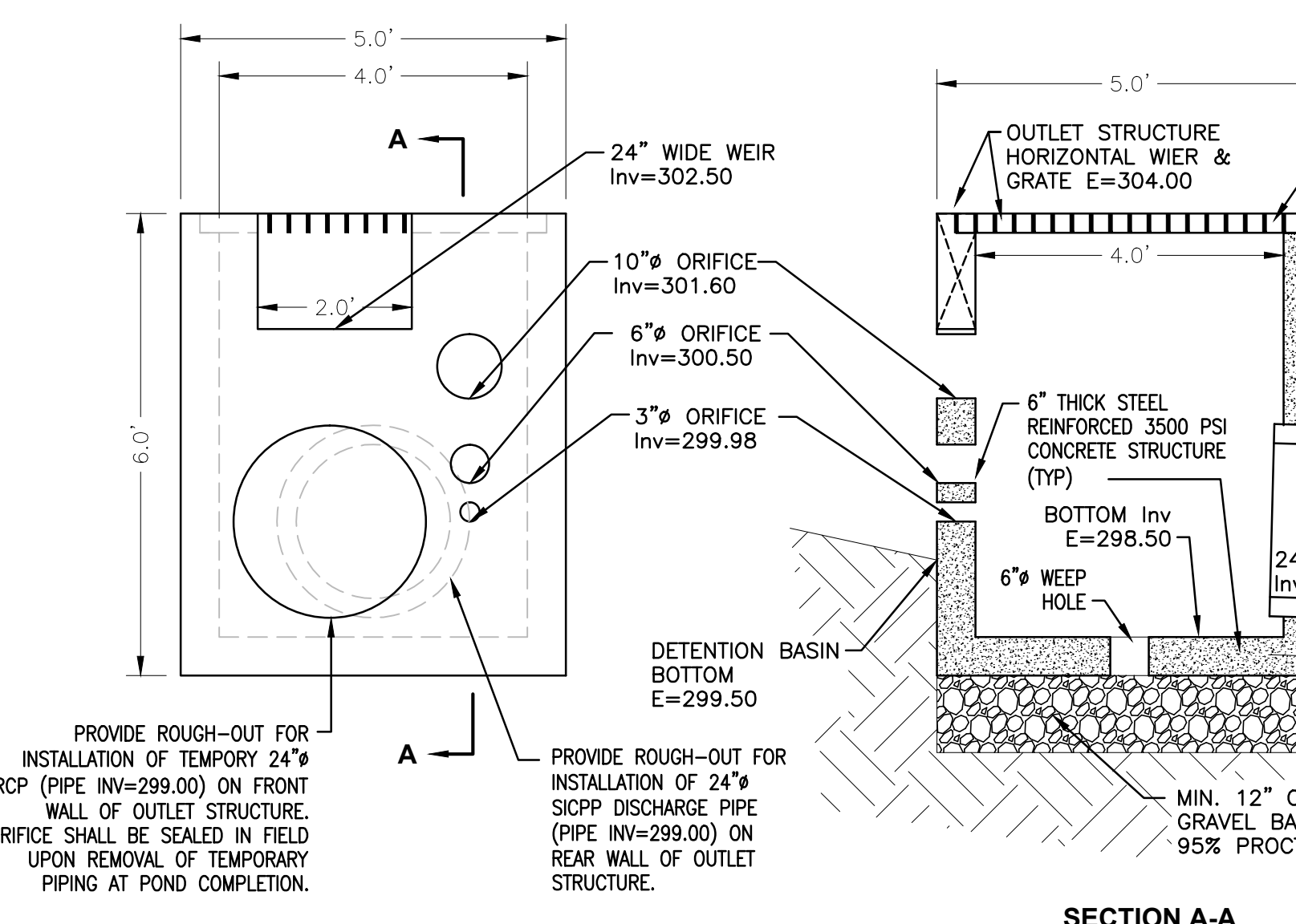
6 MODEL: MANHOLE-24 HD LOCK HEAVY DUTY CAST IRON FRAME & COVER
N.T.S.



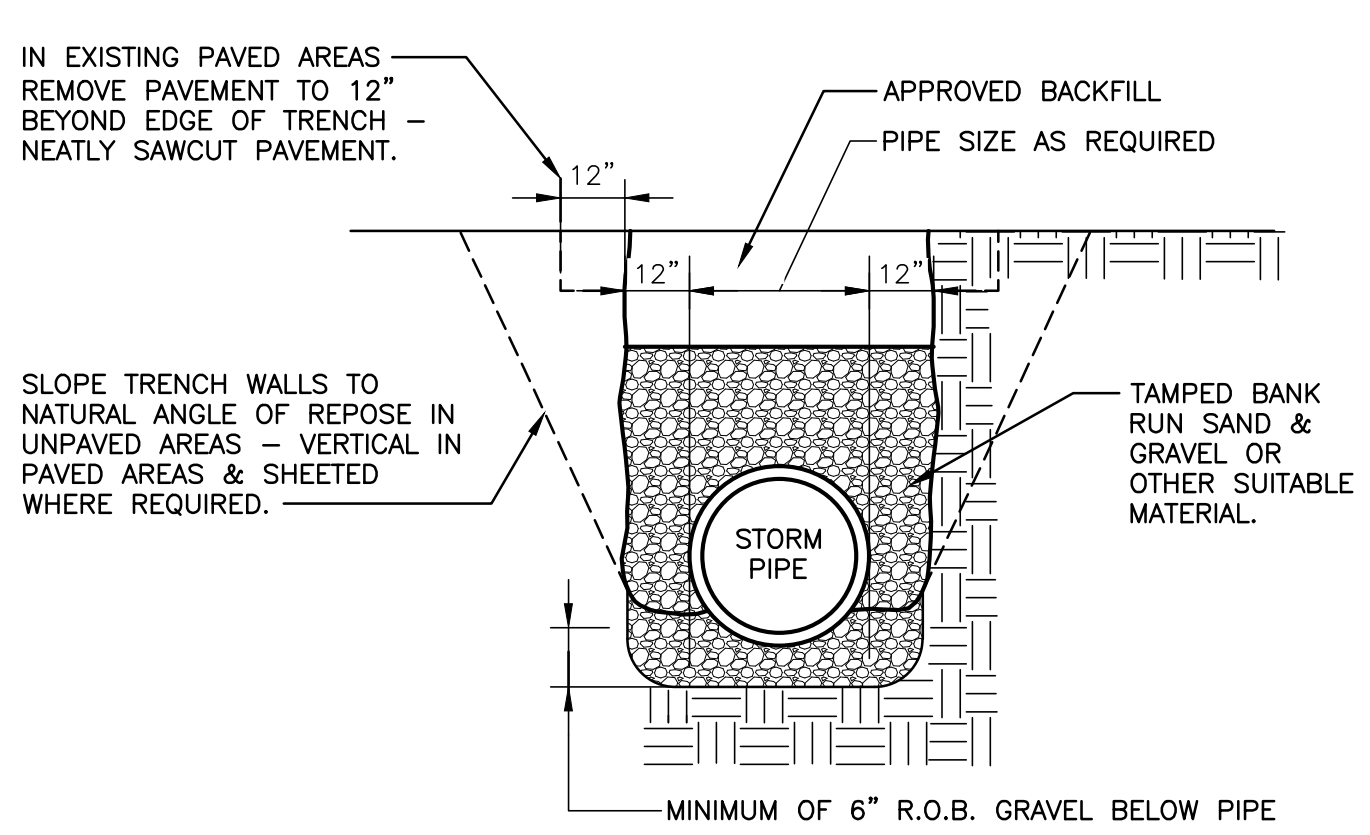
7 OUTLET - RIP RAP PROTECTION DETAIL
N.T.S.



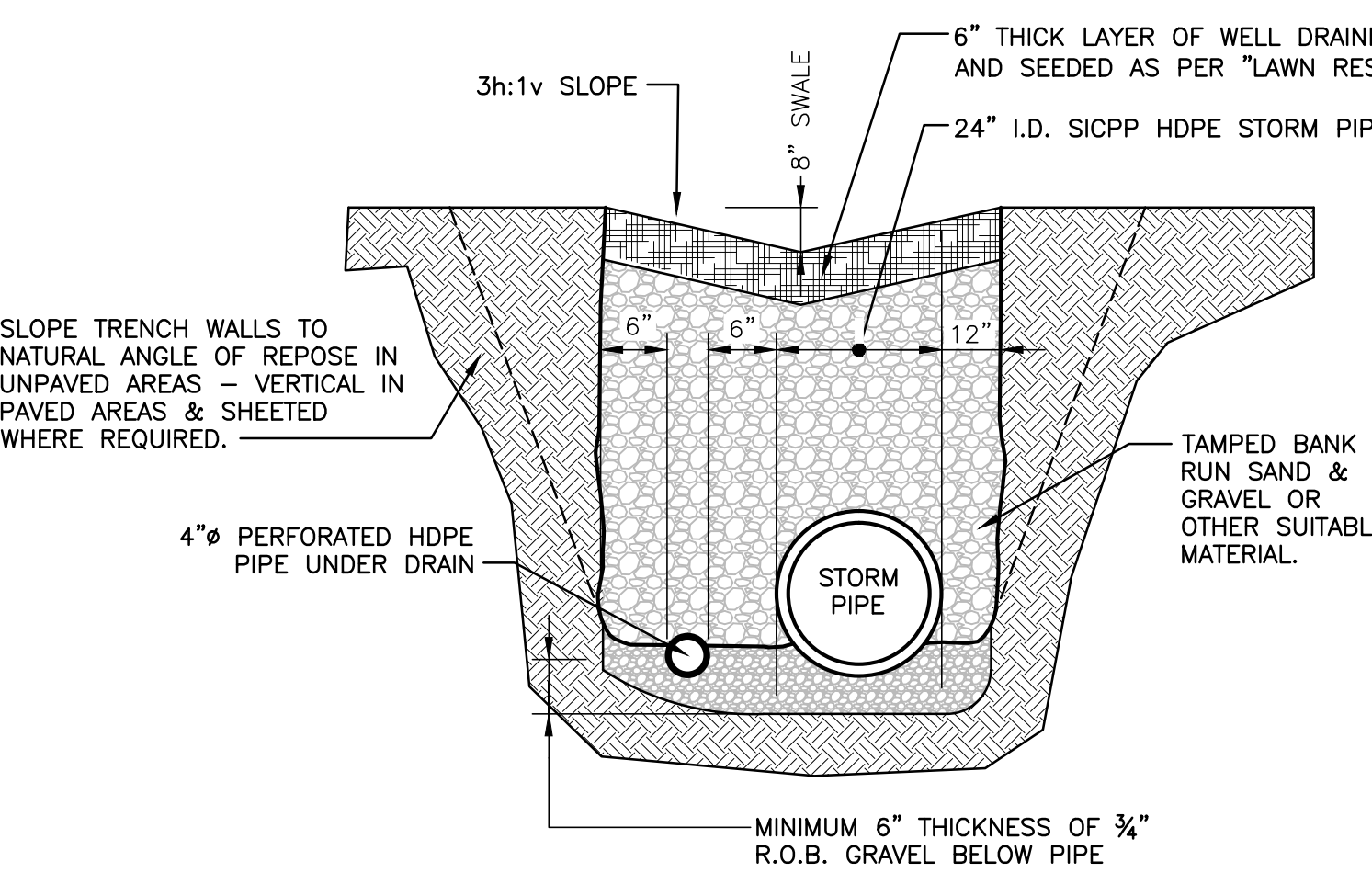
8 ROAD OPENING TRENCH DETAIL
N.T.S.



9 STORMWATER BASIN - CONCRETE OUTLET STRUCTURE DETAIL
N.T.S.



10 TYPICAL TRENCH - STORM DRAINAGE
N.T.S.



11 STORM DRAINAGE TRENCH WITH CURTAIN DRAIN & GRASSED SWALE
N.T.S.

SEED MIXTURES FOR TEMPORARY STABILIZATION
SLOPES AND BANKS (UNMOWED)

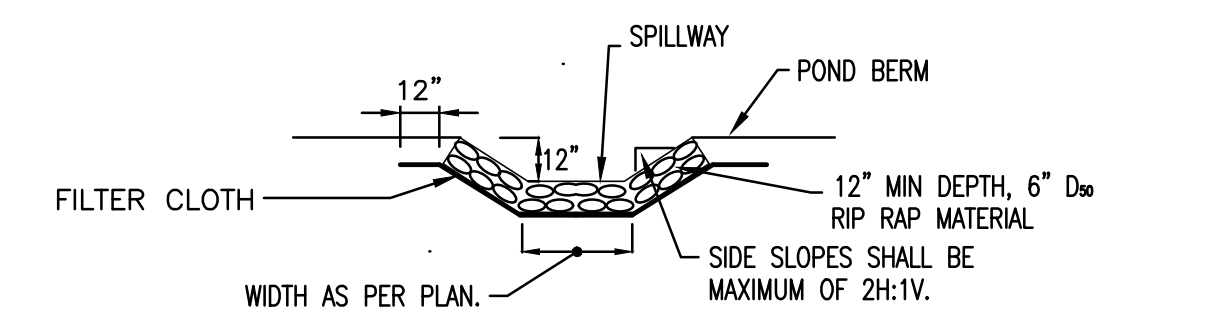
	SPECIES	LBS / ACRE
NURSE CROP	SPRING OATS (SPRING), OR	64
	ANNUAL RYEGRASS (SPRING OR FALL), OR	10
	WINTER WHEAT (FALL), OR	90
	WINTER RYE (FALL), OR	56
SEED MIXTURE	TALL FESCUE, OR	60
	FINE FESCUE, OR	35
	KENTUCKY BLUEGRASS, OR	25
	PLUS REDTOP 4, OR	3
	PERENNIAL RYEGRASS	15

PERMANENT STABILIZATION SEED MIXTURE

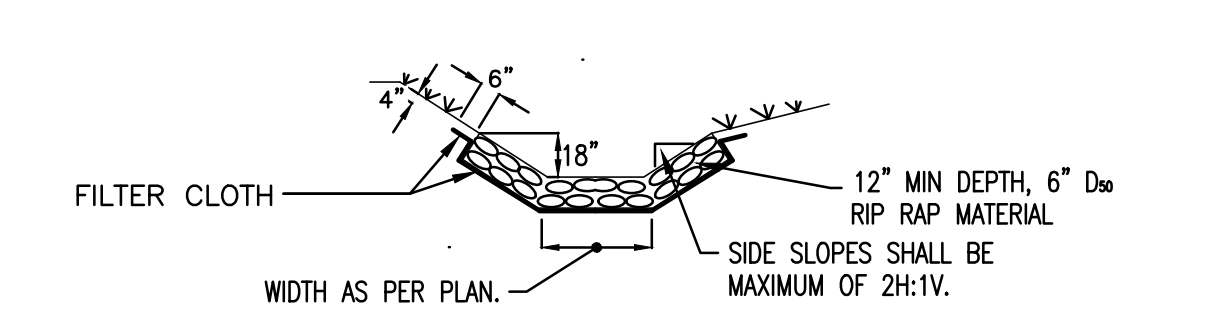
	SPECIES	LBS / ACRE
PERMANENT SEED MIXTURE	TALL FESCUE, OR	44
	KENTUCKY BLUEGRASS, OR	130
	PERENNIAL RYEGRASS	44

- NOTES:**
1. TOPSOIL SHALL BE SPREAD TO A COMPACTED UNIFORM THICKNESS OF 4".
 2. TOPSOIL SURFACE SHALL BE FINELY GRADED AND LOOSENEED BY MECHANICAL RAKES TO ENSURE SEED ACCEPTANCE AND SEED TO SOIL CONTACT.
 3. FERTILIZER SHALL BE APPLIED AT 6 LBS. OF 10-0-10 COMMERCIAL FERTILIZER/1000 SQ. FT.
 4. SEEDING AREA SHALL BE COVERED WITH A MULCH OF STRAW OR HAY AT THE RATE OF 90 LBS. (APPROX. 2 BALES) PER 1,000 S.F. TO HELP MAINTAIN SOIL MOISTURE LEVEL. MULCH SHALL BE SECURED BY APPLICATION OF A TACKIFIER ("TERRA TACK" OR APPROVED EQUAL). TACKIFIER SHALL BE APPLIED AS PER ALL MANUFACTURER REQUIREMENTS AND RECOMMENDATIONS AND AS REQUIRED BY THE SOMERSET COUNTY SOIL CONSERVATION DISTRICT.
 5. LIGHTLY WATER SEED BED DAILY TO KEEP IT MOIST, WHILE TAKING CARE NOT TO SATURATE.
 6. NEW GRASS SHALL NOT BE MOWED UNTIL IT HAS REACHED A MINIMUM HEIGHT OF 2"-2 1/2".
 7. PRACTICE REGULAR MAINTENANCE & WATER REGULARLY AS CONDITIONS REQUIRE.

12 LAWN RESTORATION REQUIREMENTS
N.T.S.



13 EMERGENCY SPILLWAY DETAIL
N.T.S.



14 RIP-RAP SWALE DETAIL
N.T.S.

CONSULTANTS:		ENGINEERS:		Drawing Title		Project Title		Project Number		Office of Construction and Facilities Management	
		MARK D. FELLEENZER, P.E.		SITE: DETAILS		WEST CAMPUS: STORM WATER IMPROVEMENTS		561A4-12-108		Department of Veterans Affairs	
				Approved: Project Director		Location: V.A.M.C. LYONS, NJ		Building Number: WEST CAMPUS			
2 SOMERSET SOIL CONS. DIST. APPROVAL 03/08/13						Date: 08/01/12		Drawing Number: WC-GS-902			
1 SOMERSET CNTY STORM WATER REVIEW 02/20/13						Checked: MDF		Drawn: SAR		Dwg. 10 of 10	
REV # REVISION DESCRIPTION DATE		NJ PROFESSIONAL ENGINEER NO. 24CE04661500		UNAUTHORIZED ALTERATION OR ADDITION TO A PLAN BEARING A LICENSED PROFESSIONAL ENGINEER'S SEAL IS A VIOLATION OF STATE EDUCATION LAW.							