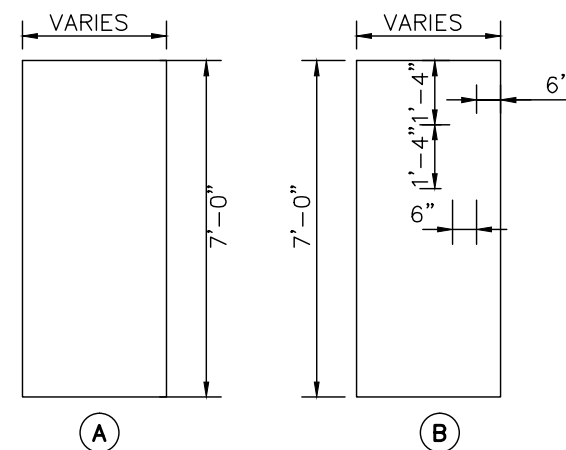
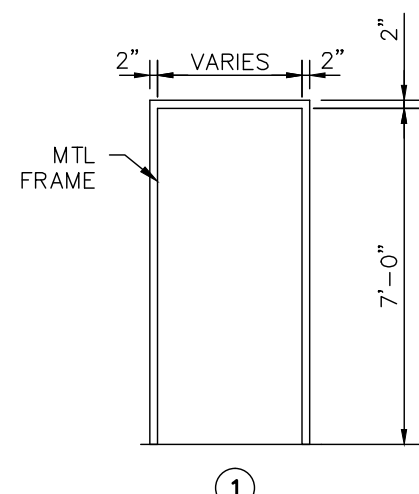


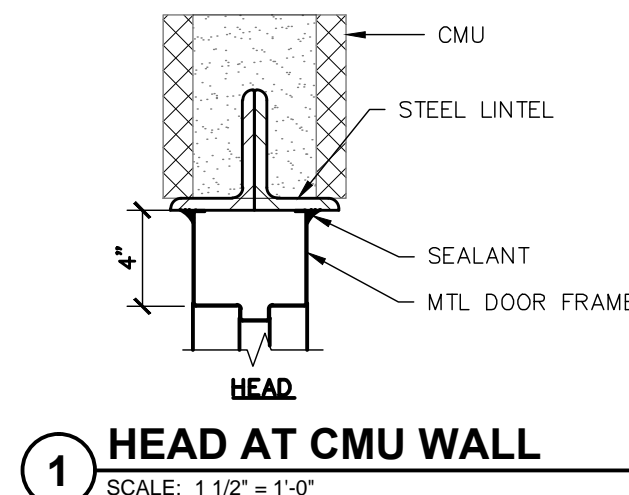
one eighth inch = one foot  
one quarter inch = one foot  
one half inch = one foot  
three eighths inch = one foot  
one inch = one foot  
one and one half inches = one foot  
two inches = one foot  
three inches = one foot  
four inches = one foot  
five inches = one foot  
six inches = one foot  
seven inches = one foot  
eight inches = one foot  
nine inches = one foot  
ten inches = one foot  
eleven inches = one foot  
twelve inches = one foot  
thirteen inches = one foot  
fourteen inches = one foot  
fifteen inches = one foot  
sixteen inches = one foot  
seventeen inches = one foot  
eighteen inches = one foot  
nineteen inches = one foot  
twenty inches = one foot  
twenty one inches = one foot  
twenty two inches = one foot  
twenty three inches = one foot  
twenty four inches = one foot  
twenty five inches = one foot  
twenty six inches = one foot  
twenty seven inches = one foot  
twenty eight inches = one foot  
twenty nine inches = one foot  
thirty inches = one foot  
thirty one inches = one foot  
thirty two inches = one foot  
thirty three inches = one foot  
thirty four inches = one foot  
thirty five inches = one foot  
thirty six inches = one foot  
thirty seven inches = one foot  
thirty eight inches = one foot  
thirty nine inches = one foot  
forty inches = one foot  
forty one inches = one foot  
forty two inches = one foot  
forty three inches = one foot  
forty four inches = one foot  
forty five inches = one foot  
forty six inches = one foot  
forty seven inches = one foot  
forty eight inches = one foot  
forty nine inches = one foot  
fifty inches = one foot  
fifty one inches = one foot  
fifty two inches = one foot  
fifty three inches = one foot  
fifty four inches = one foot  
fifty five inches = one foot  
fifty six inches = one foot  
fifty seven inches = one foot  
fifty eight inches = one foot  
fifty nine inches = one foot  
sixty inches = one foot  
sixty one inches = one foot  
sixty two inches = one foot  
sixty three inches = one foot  
sixty four inches = one foot  
sixty five inches = one foot  
sixty six inches = one foot  
sixty seven inches = one foot  
sixty eight inches = one foot  
sixty nine inches = one foot  
seventy inches = one foot  
seventy one inches = one foot  
seventy two inches = one foot  
seventy three inches = one foot  
seventy four inches = one foot  
seventy five inches = one foot  
seventy six inches = one foot  
seventy seven inches = one foot  
seventy eight inches = one foot  
seventy nine inches = one foot  
eighty inches = one foot  
eighty one inches = one foot  
eighty two inches = one foot  
eighty three inches = one foot  
eighty four inches = one foot  
eighty five inches = one foot  
eighty six inches = one foot  
eighty seven inches = one foot  
eighty eight inches = one foot  
eighty nine inches = one foot  
ninety inches = one foot  
ninety one inches = one foot  
ninety two inches = one foot  
ninety three inches = one foot  
ninety four inches = one foot  
ninety five inches = one foot  
ninety six inches = one foot  
ninety seven inches = one foot  
ninety eight inches = one foot  
ninety nine inches = one foot  
one hundred inches = one foot

DOOR SCHEDULE													
NUMBER	TYPE	MATERIAL	SIZE	THICK	FINISH	RATING	HOWR.	GLASS	FRAME TYPE	FRAME MAT.	FRAME FIN.	FRAME DET.	REMARKS
100	A	SOLID CORE WOOD	3'-0" X 7'-0"	1 3/4	STAIN	-	1		1	HM	PT	3	
101	B	SOLID CORE WOOD	3'-0" X 7'-0"	1 3/4	STAIN	-	1A	TEMP.	1	HM	PT	3	
102	A	SOLID CORE WOOD	3'-0" X 7'-0"	1 3/4	STAIN	-	3E	-	1	HM	PT	3	
103	A	SOLID CORE WOOD	3'-0" X 7'-0"	1 3/4	STAIN	-	2	-	1	HM	PT	3	
104	A	SOLID CORE WOOD	2'-6" X 7'-0"	1 3/4	STAIN	-	5D	-	1	HM	PT	3	
105	A	SOLID CORE WOOD	3'-0" X 7'-0"	1 3/4	STAIN	-	3E	-	1	HM	PT	3	
106	B	SOLID CORE WOOD	3'-0" X 7'-0"	1 3/4	STAIN	-	1	TEMP.	1	HM	PT	3	
107	A	SOLID CORE WOOD	3'-0" X 7'-0"	1 3/4	STAIN	1 HR	6	-	1	HM	PT	3	
108	A	SOLID CORE WOOD	3'-0" X 7'-0"	1 3/4	STAIN	-	3E	-	1	HM	PT	3	
109	A	SOLID CORE WOOD	2'-0" X 7'-0"	1 3/4	STAIN	-	5D	-	1	HM	PT	3	
110	A	SOLID CORE WOOD	3'-0" X 7'-0"	1 3/4	STAIN	-	3E	-	1	HM	PT	3	
111	A	SOLID CORE WOOD	3'-0" X 7'-0"	1 3/4	STAIN	-	1L	TEMP.	1	HM	PT	3	
112	A	SOLID CORE WOOD	2'-6" X 7'-0"	1 3/4	STAIN	2 HR	SH-3E	-	1	HM	PT	1, 2	SWIPE CARD
113	A	SOLID CORE WOOD	2'-6" X 7'-0"	1 3/4	STAIN	-	SH-3E	-	1	HM	PT	3	SWIPE CARD
114	A	SOLID CORE WOOD	3'-0" X 7'-0"	1 3/4	STAIN	-	3B	-	1	HM	PT	3	
114A	EXIST.(A)	EXIST. (SOLID CORE WOOD)	EXIST. (3'-0"x7'-0")	EXIST.	STAIN	EXIST.1HR	SH-3	-	EXIST.	EXIST. HM	PT	EXIST.	SWIPE CARD REFINISH EXIST. DOOR TO MATCH NEW DOORS
115	A	SOLID CORE WOOD	3'-0" X 7'-0"	1 3/4	STAIN	-	SH-3	-	1	HM	PT	3	SWIPE CARD
116	A	SOLID CORE WOOD	3'-0" X 7'-0"	1 3/4	STAIN	2 HR	SH-3	-	1	HM	PT	1, 2	SWIPE CARD, BUZZ IN, VIDEO SURVEILLANCE
117	B	SOLID CORE WOOD	3'-0" X 7'-0"	1 3/4	STAIN	2 HR	SH-3	TEMP., FIRE RATED	1	HM	PT	3	SWIPE CARD, BUZZ IN, VIDEO SURVEILLANCE
118	EXIST.(A)	EXIST. (SOLID CORE WOOD)	EXIST. (3'-0"x7'-0")	EXIST.	STAIN	EXIST.1HR	SH-3	-	EXIST.	EXIST. HM	PT	3	SWIPE CARD REFINISH EXIST. DOOR TO MATCH NEW DOORS
119	EXIST.(A)	EXIST. (SOLID CORE WOOD)	EXIST. (3'-0"x7'-0")	EXIST.	STAIN	-	3E	-	EXIST.	EXIST. HM	PT	EXIST.	REFINISH EXIST. DOOR TO MATCH NEW DOORS
120	A	METAL	3'-0" X 7'-0"	1 3/4	PAINT	1 HR	3E	-	1	HM	PT	3	SWIPE CARD, TEMPORARY DOOR
121	EXIST.(A)	EXIST. (SOLID CORE WOOD)	EXIST. (3'-0"x7'-0")	EXIST.	EXIST.	-	SH-3	-	EXIST.	EXIST. HM	EXIST.	EXIST.	SWIPE CARD

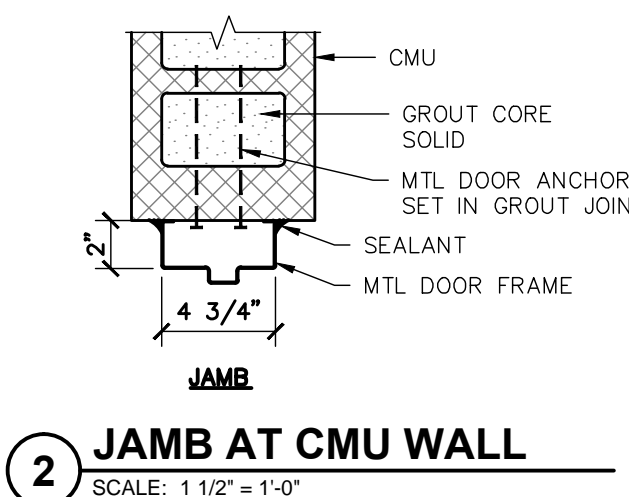


#### DOOR NOTES:

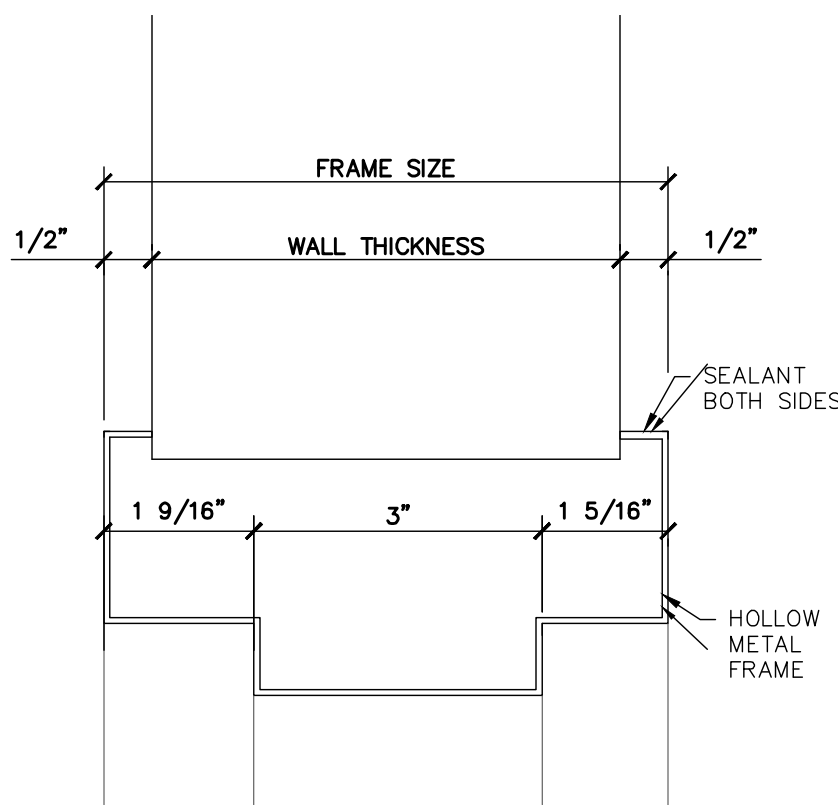
- ALL EXISTING DOORS TO REMAIN WILL HAVE HARDWARE REMOVED, THE DOOR LEAF SANDED AND REFINISHED TO MATCH DOOR ON PROJECT AND THE HARDWARE REINSTALLED.
- ALL DOORS ADJOINING PUBLIC CORRIDORS WILL BE PAINTED WITH THE PUBLIC CORRIDOR SIDE OF THE DOOR FRAME MATCHING THE DOOR TRIM IN THE PUBLIC CORRIDOR AND THE PROJECT SIDE OF THE DOOR FRAME MATCHING THE P-2 FINISH.
- ALL DOOR FRAMES WILL HAVE A CONTINUOUS BEAD OF SEALANT WHERE THE FRAME MEETS THE G.W.B. PARTITION.
- ALL FIRE RATED DOORS WILL BE IN ACCORDANCE WITH NFPA 257.



1 HEAD AT CMU WALL  
SCALE: 1 1/2" = 1'-0"



2 JAMB AT CMU WALL  
SCALE: 1 1/2" = 1'-0"



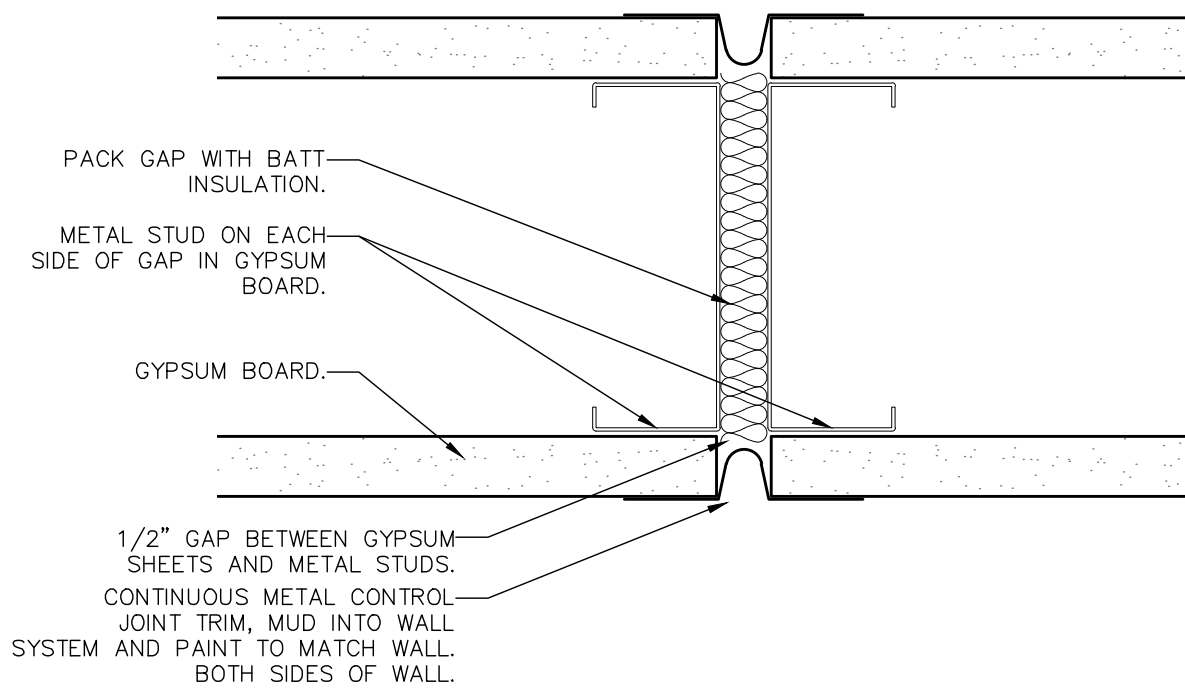
3 TYP. HEAD / JAMB  
SCALE: 6" = 1'-0"

WINDOW SCHEDULE									
NUMBER	TYPE	MATERIAL	SIZE	THICK	FINISH	RATING	GLASS	HEAD & SILL TYPE	
A	FIXED	METAL FIREFRAME HEAT BARRIER SERIES	42" W. x 40"H.	0'-2 3/8"	CLEAR	2HR	2HR FIRE RATED BALLISTIC LEVEL III	4	WINDOW SYSTEM BY TECHNICAL GLASS PRODUCTS
B	SLIDER	HOLLOW METAL FRAME	24" W. x 40"H.	0'-0 1/4"	CLEAR	-	CLEAR TEMP. GLASS		EVERGOOD, SLIDING GLASS DISPLAY DOOR LOCK, MODEL 220
C	FIXED	HOLLOW METAL FRAME	24" W. x 40"H.	0'-0 1/4"	1 WAY MIRROR	-	1 WAY MIRROR, TEMP. IMPACT SAFETY RATED		
D	EXIST.	EXIST. (HOLLOW MTL FRAME)	EXIST.	EXIST.	EXIST.	-	EXIST.		

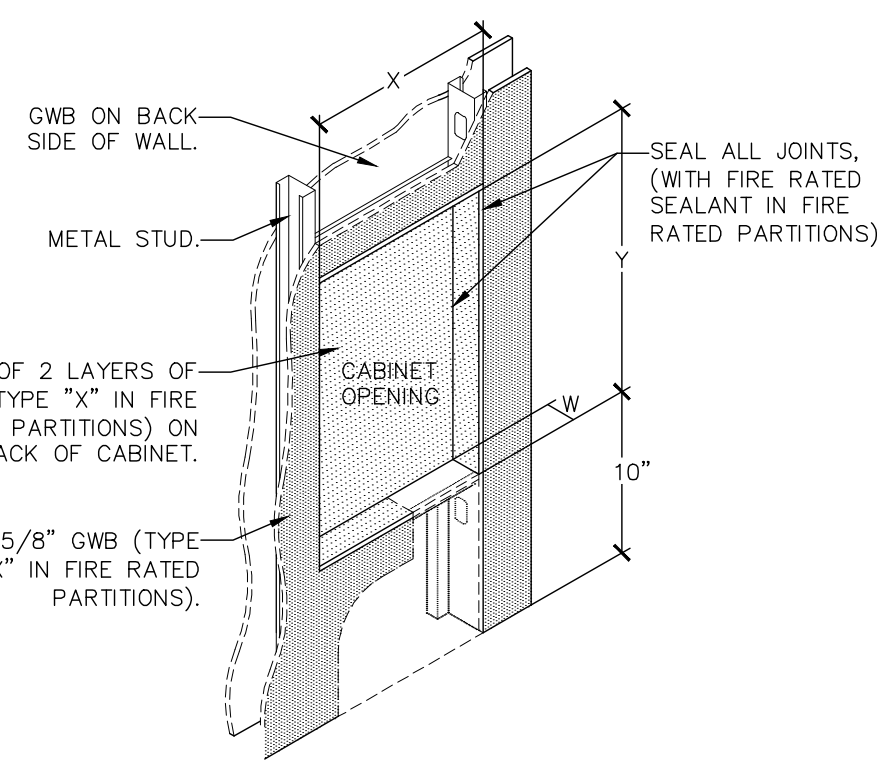
FINISH SCHEDULE														
NO.	ROOM	FLOOR	BASE	NORTH WALL		EAST WALL		SOUTH WALL		WEST WALL		CEILING		REMARKS
				MATERIAL	FINISH	MATERIAL	FINISH	MATERIAL	FINISH	MATERIAL	FINISH	MATERIAL	FINISH	
A168	PIV ROOM	VCT.-1	VCT.-0	EXIST.	P-1	EXIST.	P-1	G.W.B./EXIST.	P-1	EXIST.	P-1	ACT.-1	-	7'-10"
A168A	TRAINING OFFICER OFFICE	VCT.-1	VCT.-0	EXIST.	P-1	EXIST.	P-1	EXIST.	P-1	EXIST.	P-1	ACT.-1	-	7'-10"
A188	LOCKERS	VCT.-1	VCT.-0	EXIST.	P-1	G.W.B./EXIST.	P-1	EXIST.	P-1	EXIST.	P-1	ACT.-1	-	7'-10"
C108	CHIEF OFFICE	VCT.-1	VCT.-0	EXIST.	P-1	EXIST.	P-1	G.W.B.	P-1	EXIST.	P-1	ACT.-1	-	7'-10"
C109	CLOSET	VCT.-1	VCT.-0	G.W.B.	P-1	G.W.B.	P-1	G.W.B.	P-1	G.W.B./EXIST.	P-1	ACT.-1	-	7'-10"
C110	DEPUTY CHIEF	VCT.-1	VCT.-0	G.W.B.	P-1	G.W.B.	P-1	G.W.B.	P-1	EXIST.	P-1	ACT.-1	-	7'-10"
C112	ROLL CALL	VCT.-1	VCT.-0	G.W.B.	P-1	G.W.B.	P-1	G.W.B.	P-3	EXIST.	P-1	ACT.-1	-	7'-10"
C113	ARMORY	VCT.-1	VCT.-0	G.W.B.	P-1	G.W.B.	P-1	G.W.B.	P-1	G.W.B.	P-1	ACT.-1	-	7'-10"
C114	EVIDENCE	VCT.-1	VCT.-0	G.W.B.	P-1	G.W.B.	P-1	G.W.B.	P-1	G.W.B.	P-1	ACT.-1	-	7'-10"
C116	OPERATORS	VCT.-1	VCT.-0	G.W.B.	P-1	G.W.B.	P-1	G.W.B.	P=1/ P-3*	EXIST.	P-1	ACT.-1	-	7'-10"
C118	DISPATCH ROOM	FLR-1	VCB-1	G.W.B.	P-1	G.W.B.	P-1	G.W.B.	P-1	EXIST.	P-1	ACT.-1	-	7'-10"
C122	CORRIDOR	VCT.-1	VCT.-0	EXIST.	P-1	G.W.B.	P-1	G.W.B.	P-1	G.W.B.	P-1	ACT.-1	-	7'-10"
C134	IT ROOM	EXIST.	EXIST.	EXIST.	P-1	EXIST.	P-1	EXIST.	P-1	EXIST.	P-1	NONE	NONE	OPEN
C139	EXIST. MAIN LOBBY	*	VCB-2	G.W.B.	P-4	-	-	-	-	-	-	-	-	EXIST.
C141	HALL	VCT.-1/ VCT.-2	VCT.-0	G.W.B.	P-1	G.W.B.	P=1/ P-3*	G.W.B.	P-1	G.W.B.	P-1	ACT.-1	-	7'-10"
C142	REST ROOM	VCT.-1	VCT.-0	G.W.B.	P-1	G.W.B.	P-1	G.W.B.	P-1	G.W.B.	P-1	ACT.-1	-	7'-10"
C143	SHOWER ROOM	VCT.-1	VCT.-0	G.W.B.	P-1	G.W.B.	P-1	G.W.B.	P-1	G.W.B.	P-1	ACT.-1	-	7'-10"
C144	STORAGE	VCT.-1	VCB-1	G.W.B.	P-1	G.W.B.	P-1	G.W.B.	P-1	G.W.B.	P-1	ACT.-1	-	7'-10"
C145	HALL	VCT.-1/ VCT.-2	VCT.-0	G.W.B./EXIST.	P-1	G.W.B./EXIST.	P-1	G.W.B.	P-1	G.W.B.	P-1	ACT.-1	-	7'-10"
C146	INVESTIGATORS	VCT.-1	VCT.-0	G.W.B.	P-1	G.W.B.	P-1	G.W.B.	P-1	G.W.B.	P-1	ACT.-1	-	7'-10"
C147	HOLDING	VCT.-1	VCB-1	G.W.B.	P-1	G.W.B.	P-1	G.W.B.	P-1	G.W.B.	P-1	ACT.-1	-	7'-10"
C148	OPERATIONS	VCT.-1/VC T.-2	VCT.-0	G.W.B.	P-1	G.W.B.	P-3	G.W.B./EXIST.	P-1	-	-	ACT.-1	-	7'-10"

#### FINISH NOTES:

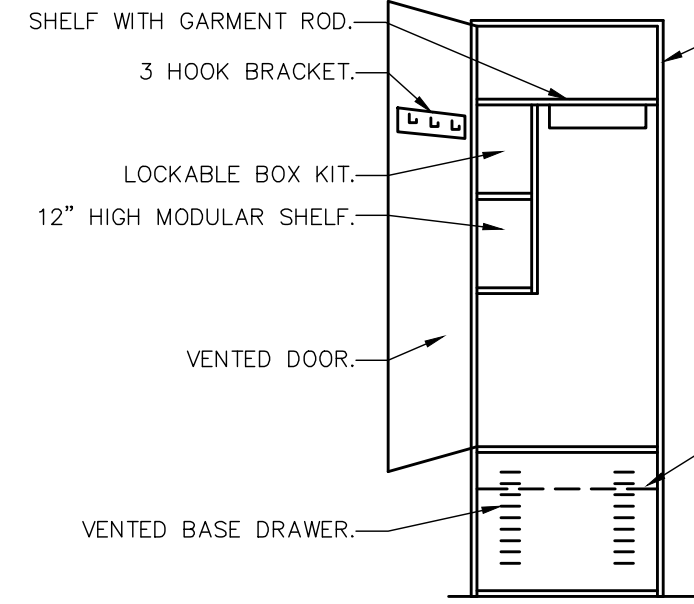
- THE CONTRACTOR SHALL FOLLOW THE MANUFACTURER'S INSTRUCTIONS AND SPECIFICATIONS FOR THE INSTALLATION OF ALL FINISH MATERIALS.
- ALL FINISHES SHALL HAVE A CLASS A FLAME SPREAD OR BETTER.
- FLOOR FINISHES SHALL BE AT A MINIMUM CLASS I.
- THE CONTRACTOR SHALL PROVIDE A RUBBER TRANSITION STRIP, THAT IS NO GREATER THAN 1/2" THICK, BETWEEN DISSIMILAR MATERIAL.
- VCT-1 FLOORING IS NOT REQUIRED IN THE AREA OF THE RAISED FLOORING SYSTEM IN THE DISPATCH ROOM.
- THE CONTRACTOR SHALL PROVIDE A RUBBER TRANSITION STRIP, THAT IS NO GREATER THAN 1/4" THICK, BETWEEN DISSIMILAR FLOORING MATERIAL.
- ALL DOORS ADJOINING PUBLIC CORRIDORS WILL BE PAINTED WITH THE PUBLIC CORRIDOR SIDE OF THE DOOR FRAME MATCHING THE DOOR TRIM IN THE PUBLIC CORRIDOR AND THE PROJECT SIDE OF THE DOOR FRAME MATCHING THE P-2 FINISH.
- MINOR ITEMS OF WORK SUCH AS CUTTING, BLOCKING, TRIMMING, ETC. WILL BE PERFORMED AS REQUIRED TO MAKE THE FINISH WORK COMPLETE WHETHER SHOWN OR NOTED ON THE CONTRACT DOCUMENTS OR NOT.
- FLOOR COAT ALL FLOORS IN ALL PROJECT AREAS WITH CEMENTITIOUS FLOOR COAT MATERIAL AS DIRECTED IN THE FLOORING SPECIFICATION.
- THE CONTRACTOR WILL COORDINATE THE EQUIPMENT, FURNITURE, AND UTILITY REQUIREMENT WITH THE RAISED FLOORING MANUFACTURE. SO THE RAISED FLOORING MANUFACTURE CAN PROVIDE SHOP DRAWING LAYOUT PLANS OF THE RAISED FLOOR SYSTEM FOR REVIEW BY THE VA COR.



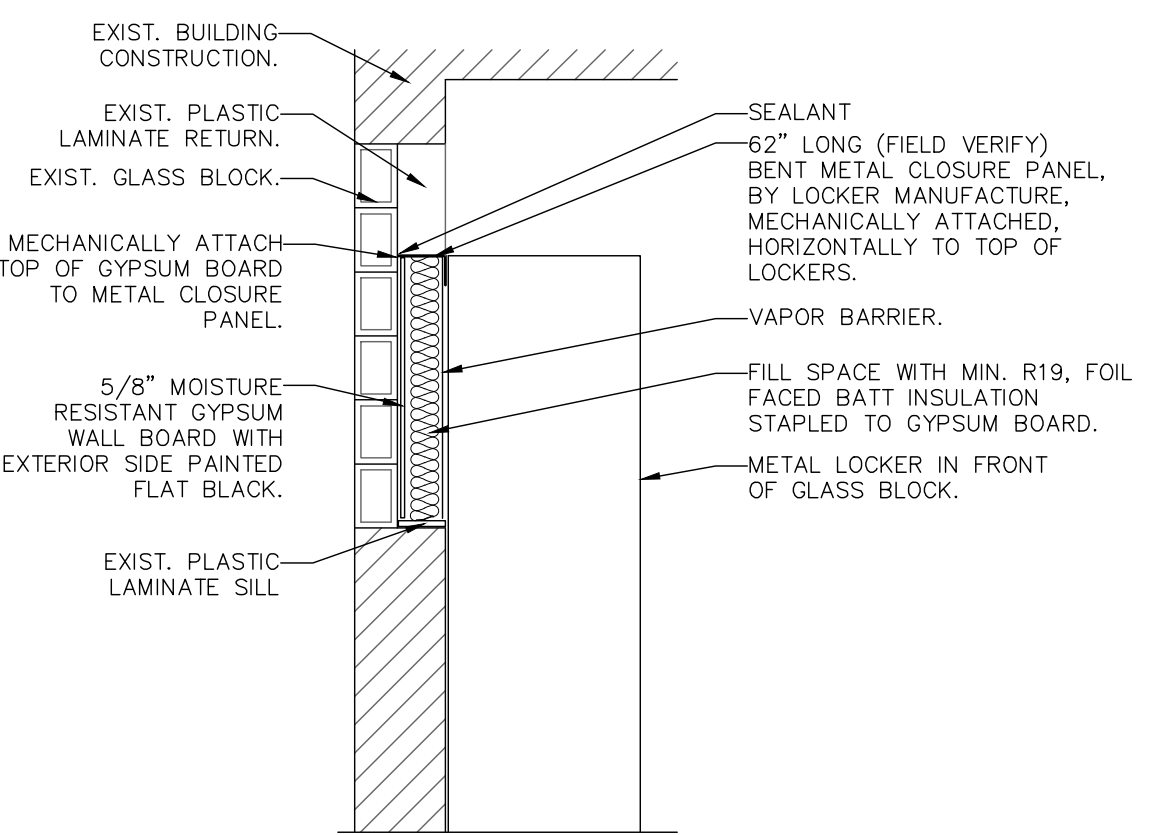
6 TYPICAL GWB EXPANSION JOINT  
SCALE: 6" = 1'-0"



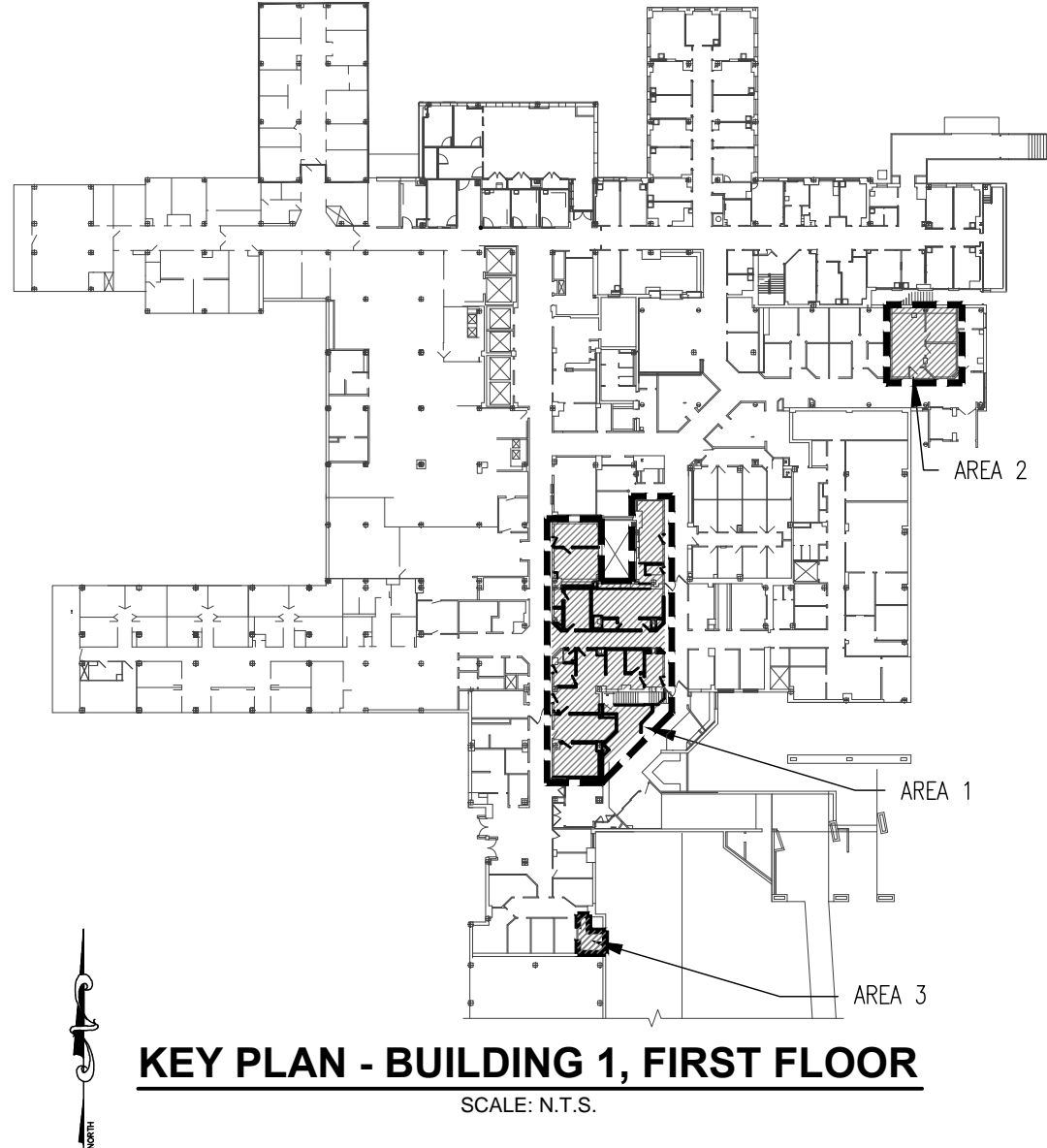
7 FIRE EXTINGUISHER RECESS  
SCALE: N.T.S.



8 TYP. POLICE LOCKER  
SCALE: N.T.S.



9 LOCKER BACKING AT GLASS BLOCK  
SCALE: N.T.S.



KEY PLAN - BUILDING 1, FIRST FLOOR  
SCALE: N.T.S.

100% DESIGN SUBMISSION	2019/7/26
90% DESIGN SUBMISSION	2019/4/19
60% DESIGN SUBMISSION	2019/3/18
30% DESIGN SUBMISSION	2019/11/26
Revisions	2012/10/18

**CONSULTANTS:**

**Engineering and Land Surveying, P.C.**

1533 Crescent Road - Clifton Park, NY 12065



**ARCHITECT/ENGINEERS:**

**Sigma Psi Consulting**

Mechanical, Electrical, Plumbing Engineers, PLLC

4 Collamer Road, Malta, NY 12020 PH (518) 581-9428 FX (518) 580-9325

Drawing Title  
**DOOR SCHEDULE, ROOM SCHEDULE AND DETAILS**

Approved Project Director  
-  
-  
-

Project Title  
**SYRACUSE VAMC RENOVATE POLICE STATION**

Location  
**SYRACUSE VA MEDICAL CENTER NY**

Date  
**4/19/13**

Checked  
**CMD**

Drawn  
**MM**

Project Number  
**528A7-12-708**

Building Number  
**BLDG. 1**

Drawing Number  
**A-7**

Dwg. 10 of 31

Office of Construction and Facilities Management

Department of Veterans Affairs