

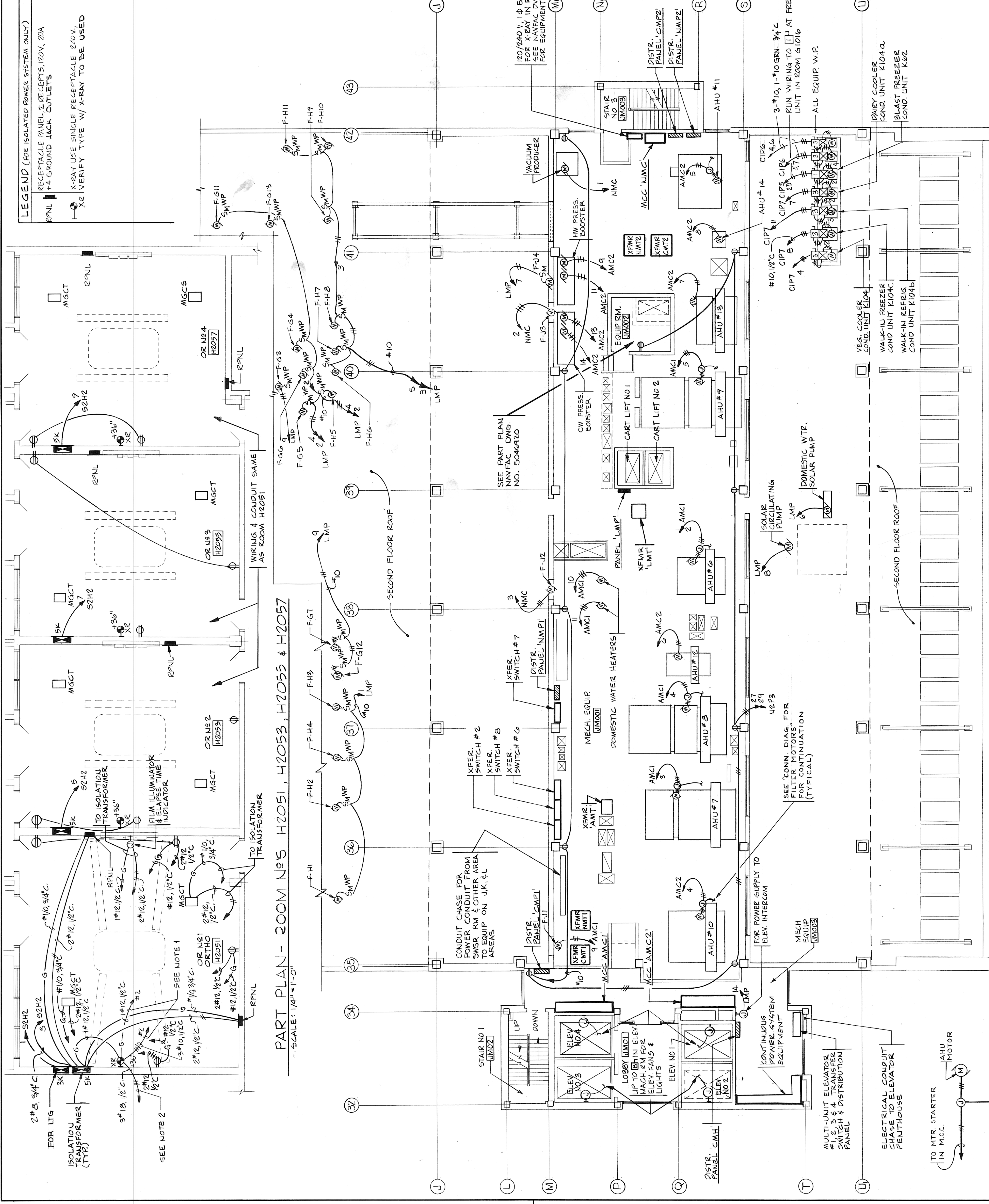
LET	DESCRIPTION	PREP'D BY	DATE	APPROVED
		RAY	7/20/82	MARTEN

# NOTES:

1. PROVIDE CONDUIT & WIRING TO ISOLATION TRANSFORMER #2 LOCATED IN ROOM H2057. SEE NAVFAC DWG. NO. 5046929 FOR LOCATION OF TRANSFORMER.
2. PROVIDE CONDUIT & WIRING TO CONTROL PANEL AT WURSE STATION IN ROOM H2047. SEE NAVFAC DWG. NO. 5046929 FOR LOCATION OF CONTROL PANEL.

## LEGEND (FOR ISOLATED POWER SYSTEM ONLY)

- RECEPTACLE PANEL & RECEPTS (20V, 20A)
- X-RAY USE SINGLE RECEPTS (20V, 20A)
- X2 VERIFY TYPE W/ X-RAY TO BE USED



PART PLAN - ROOM NO'S H2051, H2053, H2055 & H2057

SCALE: 1/4" = 1'-0"

PART PLAN - ROOM H2130

SCALE: 1/4" = 1'-0"

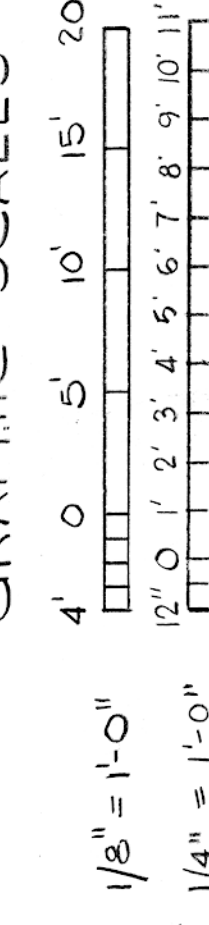
## KEY PLAN

11-1-82

ROBERTS, LOWMEYER, PRITZ, PETERS & BUTLER LOPATKA, KACIAR, S. WALL CORPORATION CHARLESTON, S.C.	DEPARTMENT OF THE NAVY NAVAL FACILITIES ENGINEERING COMMAND SOUTHERN DIVISION CHARLESTON, S.C.
SSSN VAUGHN DRESBACH, CHILKOTSKI NAVY PENTAGON, WASHINGTON, D.C.	NAVAL REGIONAL MEDICAL CENTER ORLANDO, FLORIDA
SUPPLEMENTED BY: CH. ENGR. J. MARTEN DATE: 7/20/82 SOUTHERN DIVISION DIVISION FROM MEMBERS: 11-1-82	<b>HOSPITAL REPLACEMENT</b>
APPROVED: [Signature]	POWER - M FLOOR AREA J & PART PLANS
OFFICER IN CHARGE: 80091	SIZE: 5046930
DATE: 11-1-82	CONSTR. CONTR. NO. N6246775-C-0340
ED FOR COMMANDER, NAVFAC	SCALE: AS SHOWN

E 28

## GRAPHIC SCALES



POWER - M FLOOR PLAN - AREA J

SCALE: 1/8" = 1'-0"

CONN. DIAG. FOR  
FILTER MOTORS  
(TYPICAL AHU #1 THRU #15)

