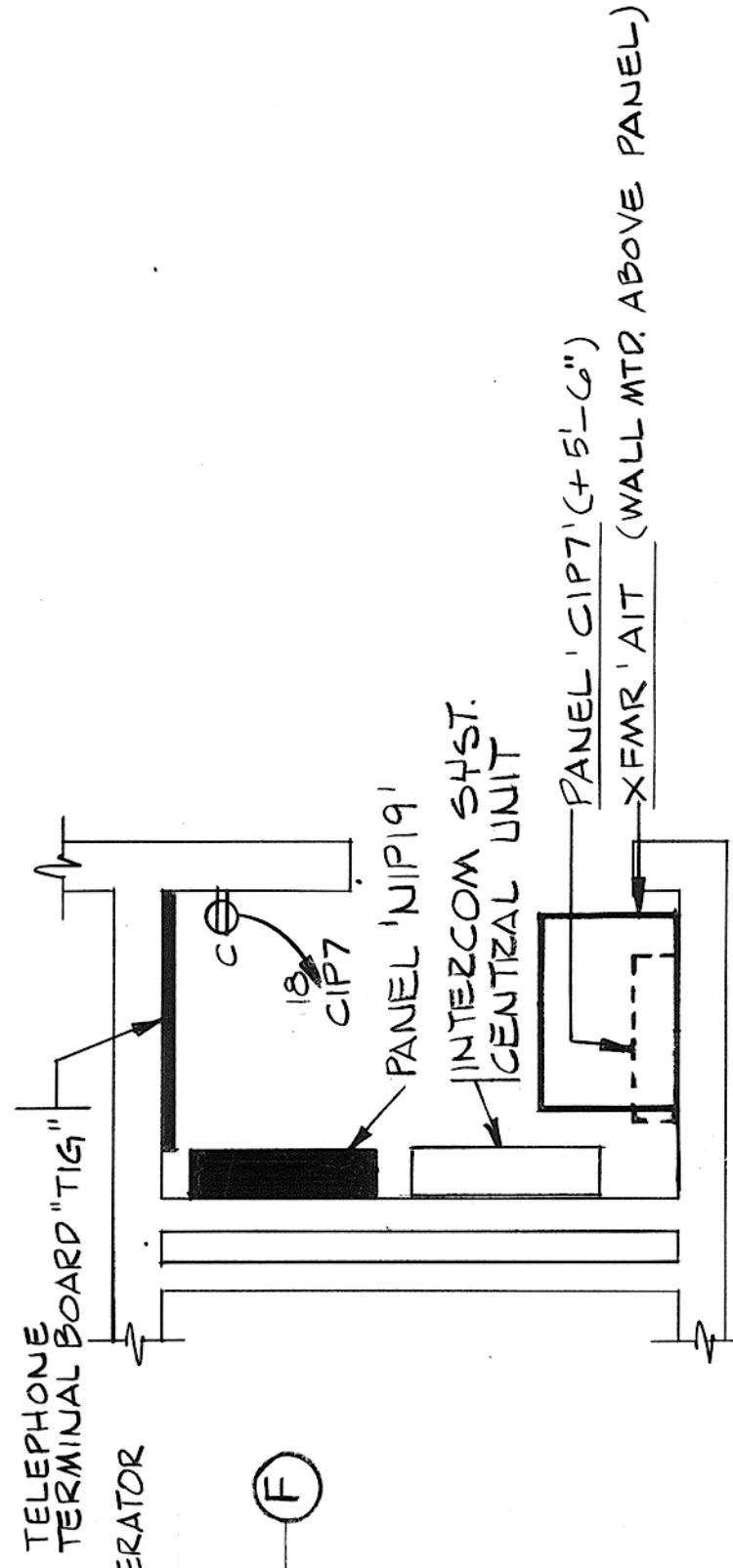


REV	DESCRIPTION	DATE	APPROVED
1	REVISIONS		
2			
3			
4			
5			
6			
7			
8			
9			
10			
11			
12			
13			
14			
15			
16			
17			
18			
19			
20			
21			
22			
23			
24			
25			
26			
27			
28			
29			
30			
31			
32			
33			
34			
35			
36			
37			
38			
39			
40			
41			
42			
43			
44			
45			
46			
47			
48			
49			
50			
51			
52			
53			
54			
55			
56			
57			
58			
59			
60			
61			
62			
63			
64			
65			
66			
67			
68			
69			
70			
71			
72			
73			
74			
75			
76			
77			
78			
79			
80			
81			
82			
83			
84			
85			
86			
87			
88			
89			
90			
91			
92			
93			
94			
95			
96			
97			
98			
99			
100			

# NOTES:

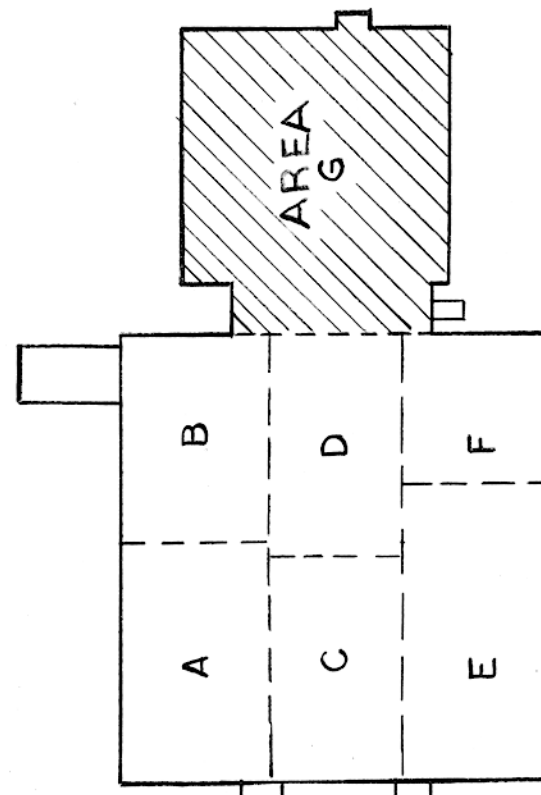
1. PROVIDE FOR FUTURE TRASH COMPACTOR STARTER 480V, 3P NEMA 1 FVR, NEMA 3R ENCLOSURE, 10 HP
2. FOR DRILL PRESS, BAND SAW, TABLE SAW & PIPE THREADER IN ROOM G1094. THE CONTRACTOR SHALL FURNISH THESE POWER EQUIPMENT EQUIP. RATINGS AND MAKE FINAL CONNECTION.



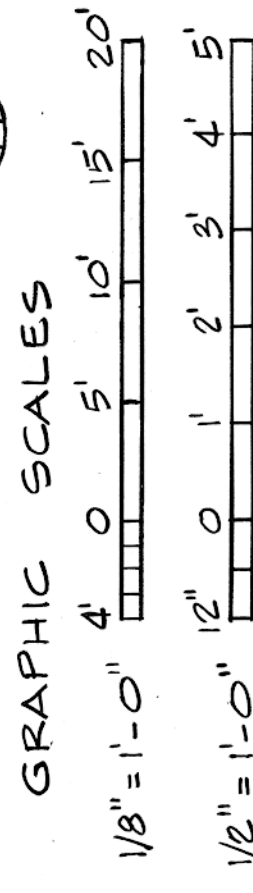
PART PLAN-ROOM G1030  
SCALE: 1/2" = 1'-0"

ROOM NO.	RECEPTACLE WITH WIRING & CONDUIT	WIRING & CONDUIT
G1092	AA	1-15R, 2-20R, 5-15R, 3-12-1#12 E.G. IN 1/2" C.
G1094	AA	1-15R, 2-20R, 5-15R, 3-12-1#12 E.G. IN 1/2" C.
G1092	BB	2-30R, 3-30R, 6-30R, 3-10-1#10 E.G. IN 1/2" C.
G1094	BB	2-30R, 3-30R, 6-30R, 3-10-1#10 E.G. IN 1/2" C.
G1092	CC	10-20R, 11-15R, 11-20R, 14-15R, 14-20R, 15-15R, 15-20R, 4-12-1#12 E.G. IN 3/4" C.
G1094	CC	10-20R, 11-15R, 11-20R, 14-15R, 14-20R, 15-15R, 15-20R, 4-12-1#12 E.G. IN 3/4" C.
G1092	DD	10-30R, 11-30R, 14-30R, 15-30R, 15-30R, 15-30R, 4-10-1#10 E.G. IN 1/2" C.
G1094	DD	10-30R, 11-30R, 14-30R, 15-30R, 15-30R, 15-30R, 4-10-1#10 E.G. IN 1/2" C.
G1092	EE	10-50R, 11-50R, 14-50R, 15-50R, 15-50R, 15-50R, 4-10-1#10 E.G. IN 1/2" C.
G1094	EE	10-50R, 11-50R, 14-50R, 15-50R, 15-50R, 15-50R, 4-10-1#10 E.G. IN 1/2" C.
G1092	FF	10-15R, 11-15R, 11-20R, 14-15R, 14-20R, 15-15R, 15-20R, 3-12-1#12 E.G. IN 1/2" C.
G1094	FF	10-15R, 11-15R, 11-20R, 14-15R, 14-20R, 15-15R, 15-20R, 3-12-1#12 E.G. IN 1/2" C.
G1092	GG	10-20R, 11-20R, 14-20R, 15-20R, 15-20R, 15-20R, 4-12-1#12 E.G. IN 3/4" C.
G1094	GG	10-20R, 11-20R, 14-20R, 15-20R, 15-20R, 15-20R, 4-12-1#12 E.G. IN 3/4" C.
G1092	HH	10-20R, 11-20R, 14-20R, 15-20R, 15-20R, 15-20R, 4-12-1#12 E.G. IN 3/4" C.
G1094	HH	10-20R, 11-20R, 14-20R, 15-20R, 15-20R, 15-20R, 4-12-1#12 E.G. IN 3/4" C.

\* ALL RECEPTACLES SHALL BE 6" CENTER TO CENTER.  
+ E.G. = ELECTRICAL GROUND WIRE



KEY PLAN



DEPARTMENT OF THE NAVY	NAVAL FACILITIES ENGINEERING COMMAND
SOUTHERN DIVISION	CHARLESTON, S.C.
NAVAL REGIONAL CENTER	ORLANDO, FLORIDA
HOSPITAL REPLACEMENT	
POWER - FIRST FLOOR AREA G	
SIZE CODE IDENT NO.	NAVJAG DRAWING NO.
DATE	DATE
APPROVED	APPROVED
OFFICER IN CHARGE	OFFICER IN CHARGE
DATE	DATE
CONSTR. CONTR. NO.	CONSTR. CONTR. NO.
SCALE	SCALE
AS SHOWN	AS SHOWN
5046928	5046928
80091	80091
60340	60340
337 OF	337 OF

E 26

POWER - FIRST FLOOR PLAN - AREA G  
SCALE: 1/8" = 1'-0"

