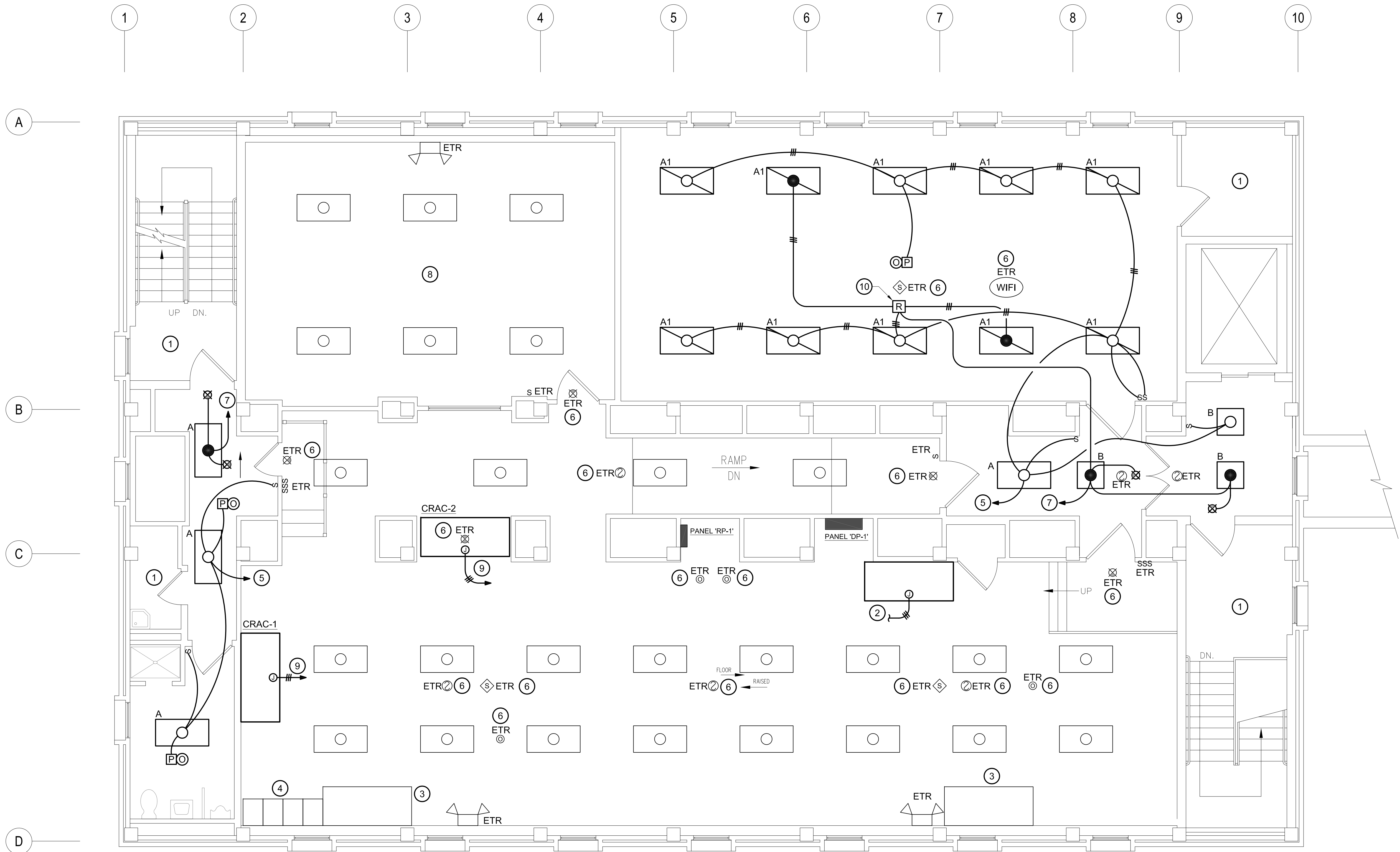


three inches = one foot
one and one half inch = one foot
one inch = one foot
three-quarters inch = one foot
one-half inch = one foot
three-eighths inch = one foot
one-quarter inch = one foot
one-eighth inch = one foot

1 | 2 | 3 | 4 | 5 | 6 | 7 | 8



1
15-E6
SECOND FLOOR PLAN - ELECTRICAL - NEW WORK
SCALE: 1/4" = 1'-0"

GENERAL NOTES:

1. REFER TO 15-E1 FOR ELECTRICAL LEGEND, ABBREVIATIONS AND GENERAL NOTES.

DRAWING NOTES:

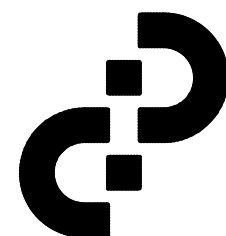
- ① LIGHTING IN THIS AREA IS EXISTING TO REMAIN.
② RELOCATE EXISTING CRAC UNIT AND EXTEND WIRE AND CONDUIT TO RECONNECT FEEDER TO SAME BRANCH CIRCUIT BREAKER IN PANEL 'DP1'.
③ EXISTING CRAC UNIT TO REMAIN.
④ EXISTING UPS TO REMAIN.
⑤ CONNECT TO SPARE BRANCH CIRCUIT BREAKER IN PANEL '2LP' MADE AVAILABLE DUE TO DEMOLITION OF LIGHTING FIXTURES SERVING AREA.
⑥ REINSTALL EXISTING DEVICE THAT WAS TEMPORARILY SUPPORTED DURING DEMOLITION.
⑦ CONNECT TO SPARE BRANCH CIRCUIT BREAKER IN PANEL '2-EP' MADE AVAILABLE DUE TO DEMOLITION OF LIGHTING FIXTURES SERVING AREA.
⑧ REWORK EXISTING LIGHTING CIRCUITRY TO INSTALL NEW OCCUPANCY SENSOR WITH POWER PACK AHEAD AND IN SERIES WITH LOCAL SWITCH IN THIS ROOM.
⑨ CONNECT TO NEW CRAC UNIT: 74.6MCA, 80A MOCP, 208V, 3PH. EXTEND 3 #4, 1 #8 GRD IN 1" CONDUIT TO EXISTING SPACE IN EXISTING PANEL 'DP1'.
⑩ PROVIDE EMERGENCY LIGHT FIXTURE RELAY/ TRANSFER DEVICE. INSTALL PER MANUFACTURER'S RECOMMENDATIONS. CONNECT SO THAT THE EMERGENCY FIXTURE CAN BE SWITCHED (SAME AS OTHER FIXTURES) BUT WILL BE ENERGIZED VIA EMERGENCY CIRCUIT UPON LOSS OF NORMAL POWER. PROVIDE WIRE AND CONDUIT AS REQUIRED.

Additions:	Date:
Revisions:	

Consultants
BURDETTE KOEHLER MURPHY & ASSOCIATES, INC.
MECHANICAL / ELECTRICAL CONSULTING ENGINEERING
1425 CLARKVIEW ROAD, SUITE 500
BALTIMORE, MARYLAND 21209
410.323.0600 - FAX 410.377.2543

BUILDING COST CONSULTANTS
12917 - 30TH AVENUE
PLATTSBOROUGH, NEBRASKA 68046
402.298.8260 - FAX 402.298.8290

Seal:



**ARCHITECTURE
PLANNING
ENGINEERING**
POLT DESIGN GROUP
1301 Enterprise Court, Suite 103-C Bel Air, Maryland 21014-1847
410.803.2141 fax 410.838.1603
www.polt-design.com

Drawing Scale:	Drawing Title:
	SECOND FLOOR PLAN - ELECTRICAL - NEW WORK
Drawing Start Date:	Approved: Associate Director for Operations:
Drawing Finish Date:	Approved: Chief, Facilities Engineer:
Drawing Approved:	Approved: Director, Medical Center:

Project Title:		
BUILDING 15 RENOVATION		
Building No:	Checked:	Drawn:
15	RAM	BMG
Location: VAMHCS MEDICAL CENTER WILMINGTON, DELAWARE		



1 | 2 | 3 | 4 | 5 | 6 | 7 | 8