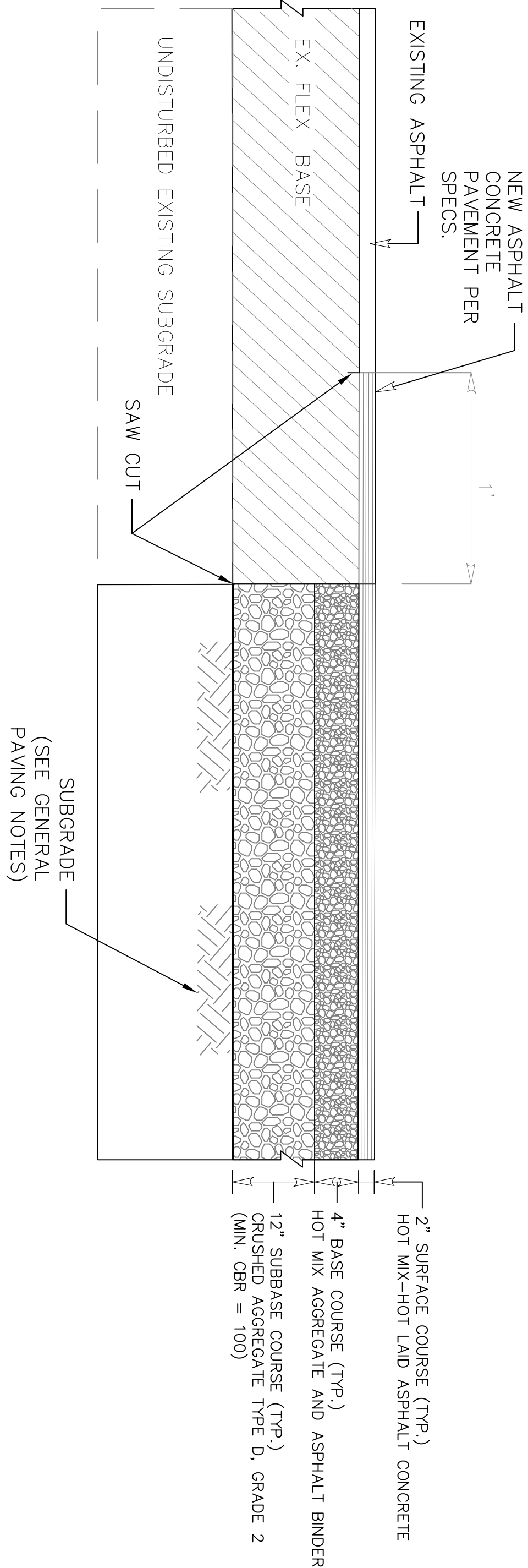


1 TYPICAL ASPHALT PAVEMENT SECTION

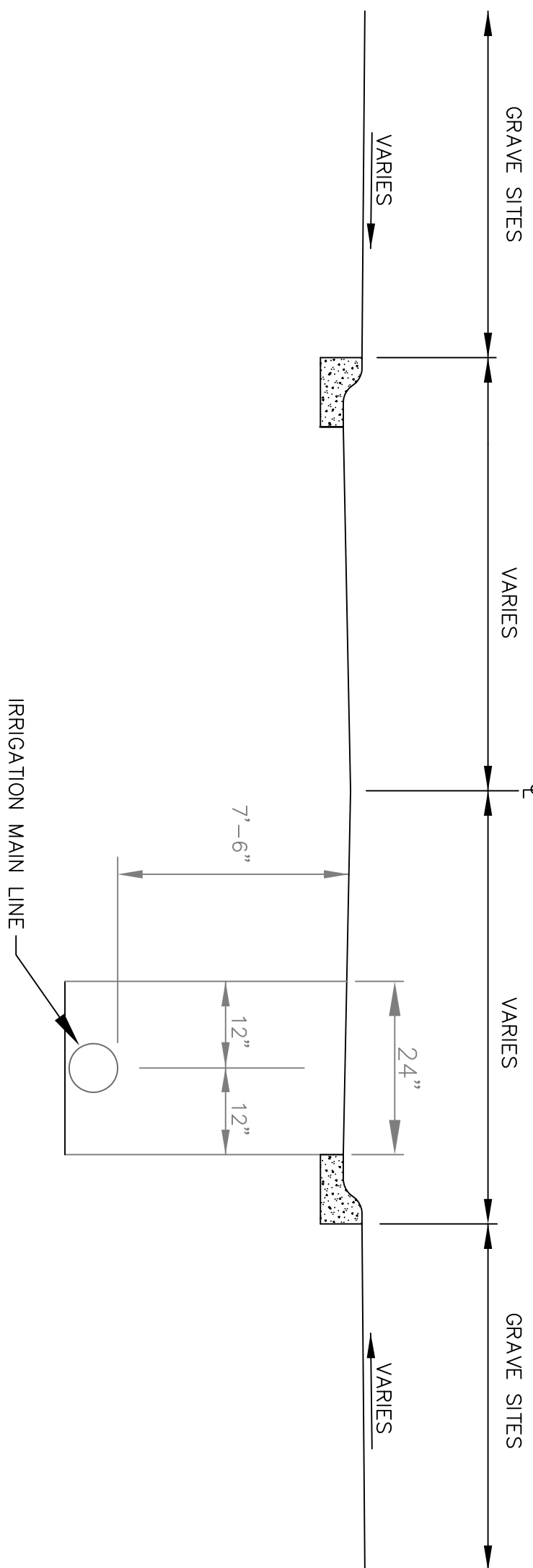
N.T.S.



2 NEW ASPHALT PAVEMENT TIE-IN

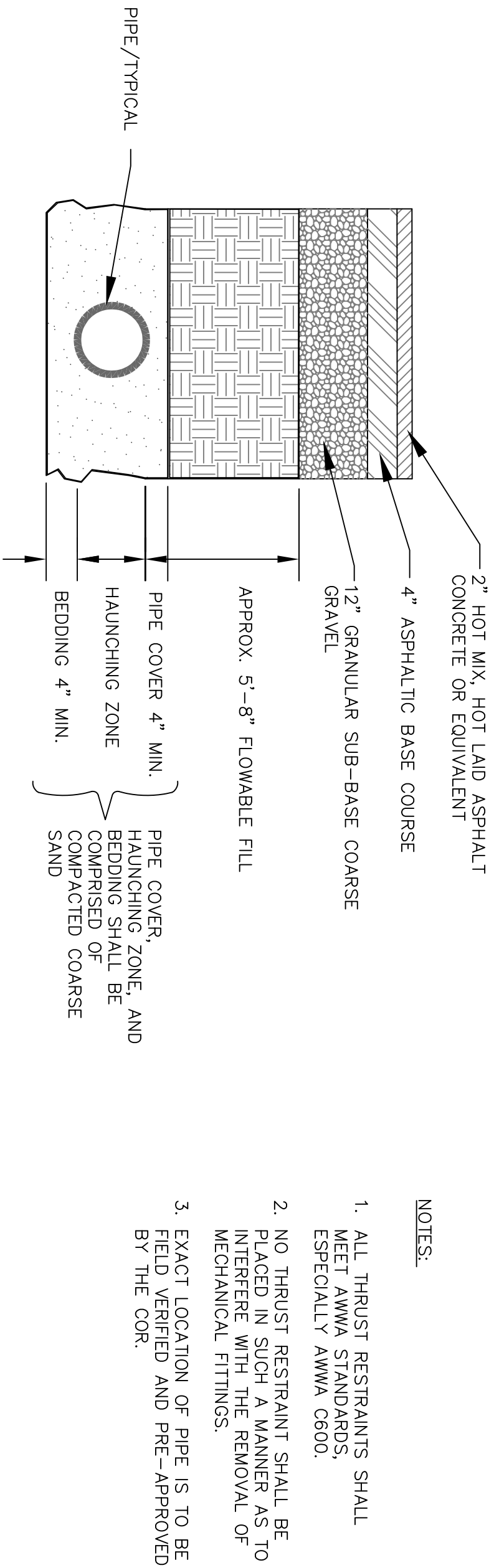
N.T.S.

- GENERAL PAVING NOTES:**
- EXISTING UPPER 12 INCHES WITHIN ROADWAY AREAS TO BE PAVED SHALL BE REMOVED DUE TO THE PRESENCE OF ORGANICS. LOCALIZED, DEEPER REMOVAL MAY BE REQUIRED IF ORGANICS ARE ENCOUNTERED. DEEPER REMOVAL SHALL BE LIMITED TO 12 INCHES OF CLAY MATERIAL EQUIVALENT TO THE ON-SITE MATERIAL.
 - PRIOR TO COMPACTION AND PLACEMENT OF GRANULAR SUBBASE, THE CUT AREA SHALL BE REVIEWED AND PROTECTED FOR STABILITY. BECAUSE GEOTECHNICAL REPORTS FOR STABILITY ARE REQUIRED, ROADWAY ACTION SHALL BE IN ACCORDANCE WITH ASTM D698.



3 TYPICAL IRRIGATION MAIN LOCATION

N.T.S.

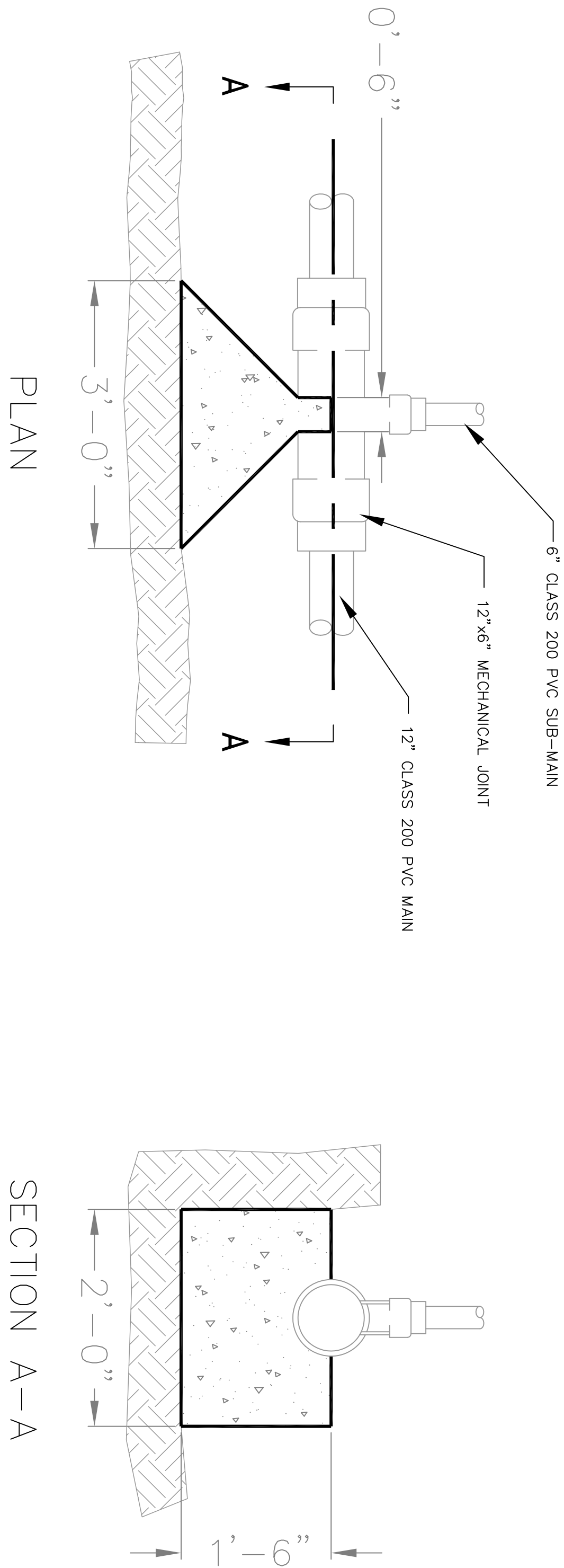


4 TRENCH DETAIL

N.T.S.

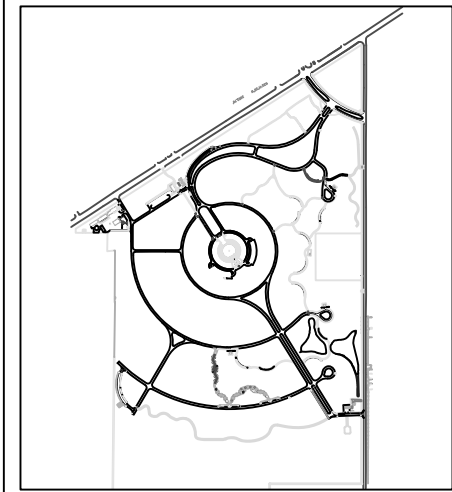
NOTES:

- ALL THRUST RESTRAINTS SHALL BE INSTALLED IN ACCORDANCE WITH AWWA C900.
- NO THRUST RESTRAINT SHALL BE PLACED IN SUCH A MANNER AS TO INTERFERE WITH THE REMOVAL OF MECHANICAL FITTINGS.
- EXACT LOCATION OF PIPE IS TO BE DETERMINED BY THE COR.



4 THRUST BLOCKING DETAIL

N.T.S.



Drawing Title
PAVEMENT AND IRRIGATION DETAILS

Project Title
REPAIR IRRIGATION SYSTEM

Approved: Division Chief
Approved: Service Director

Building Number
Location

Checked
CFC

Drawn
CFC

Date
07/05/2013

Project No.
851-13-103

Dwg. 4 Of 4
L201