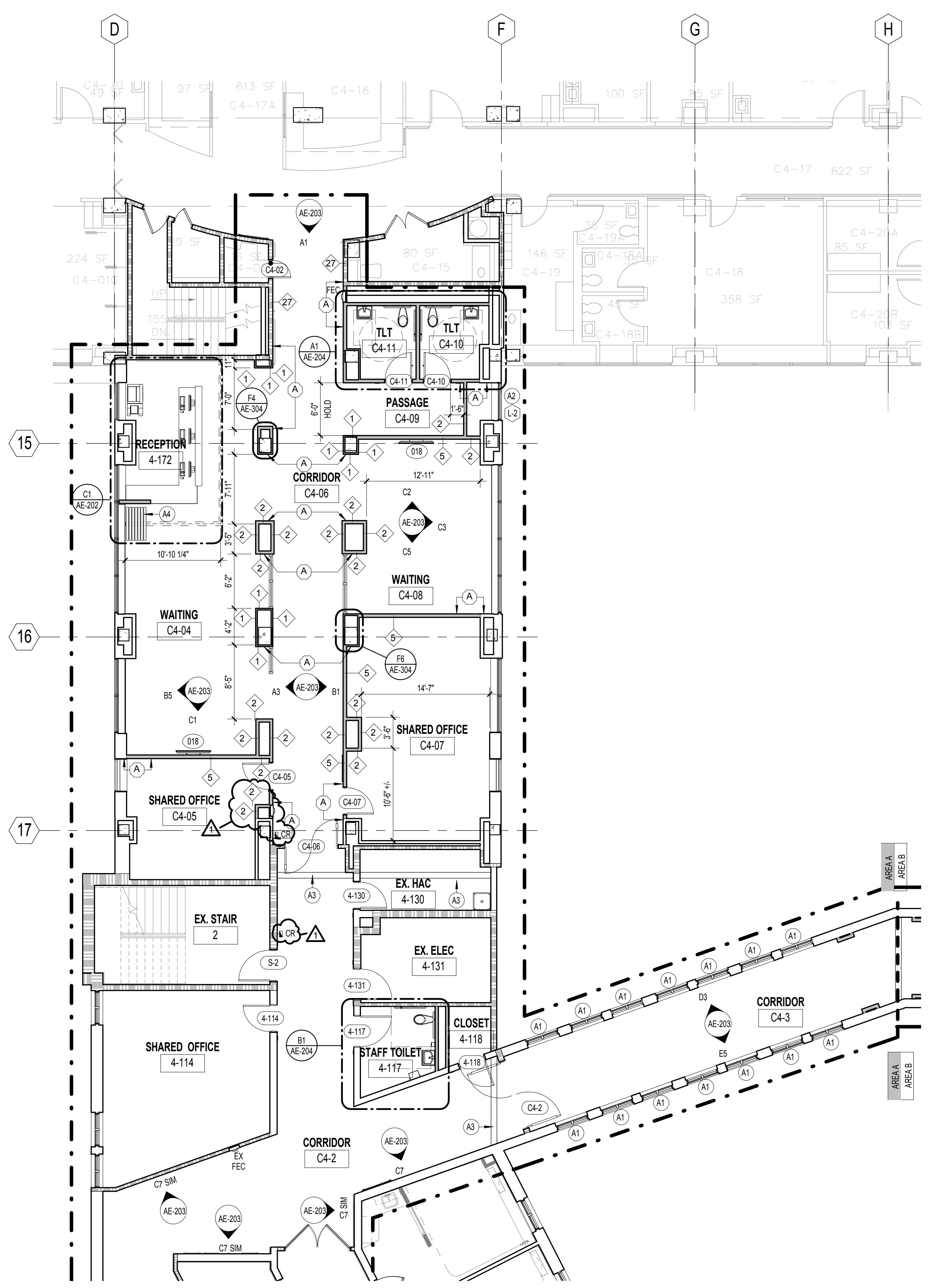


three inches = one foot  
one and one half inches = one foot  
one inch = one foot  
three quarters inch = one foot  
one half inch = one foot  
three eighths inch = one foot  
one quarter inch = one foot  
one eighth inch = one foot  
one sixteenth inch = one foot



F1 FOURTH FLOOR ARCHITECTURAL PLAN AREA A  
1/8" = 1'-0"

