

A

B

C

D

E

F

A

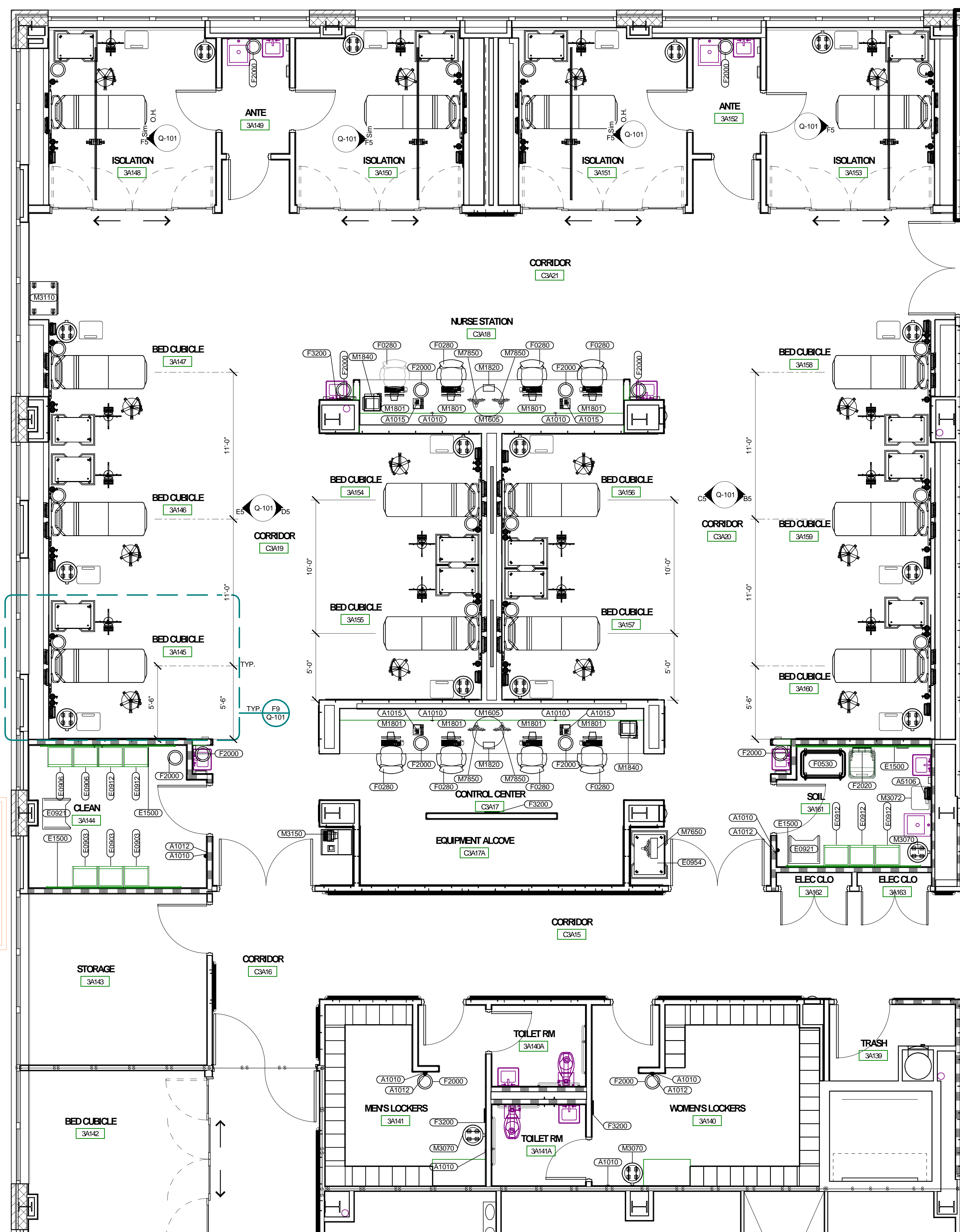
B

C

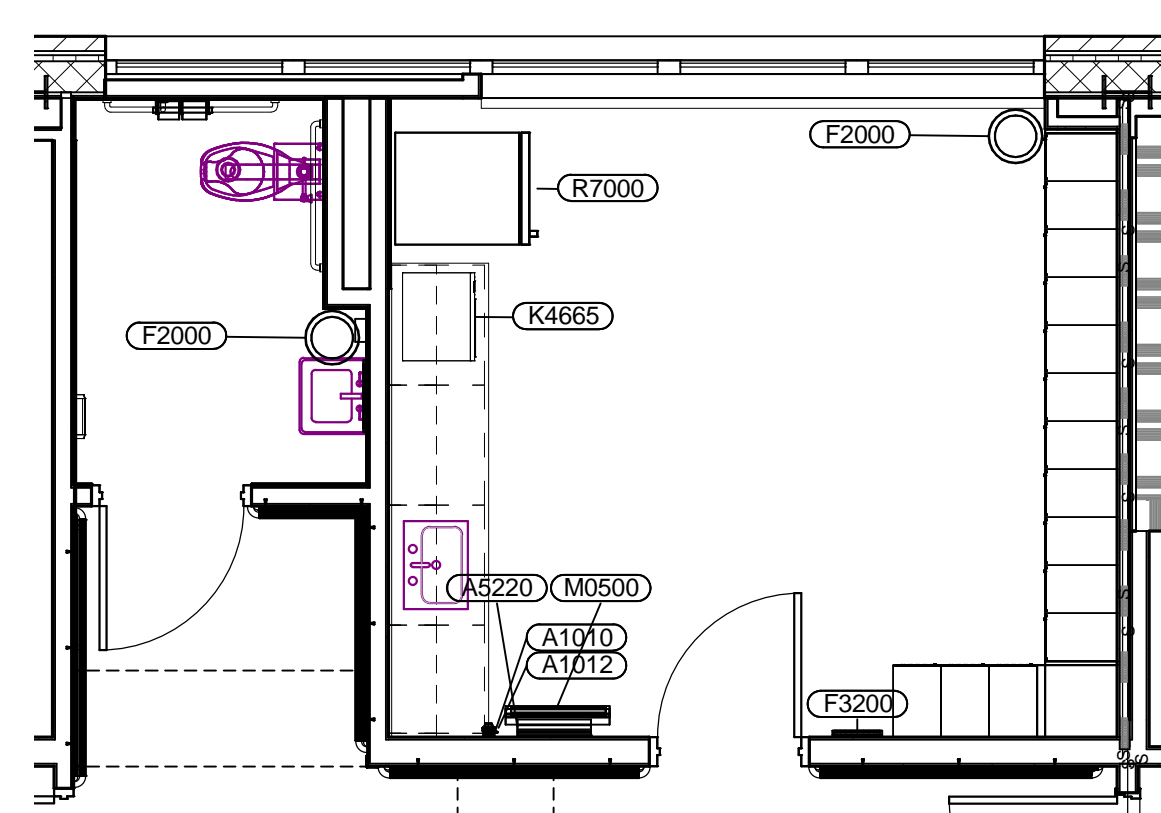
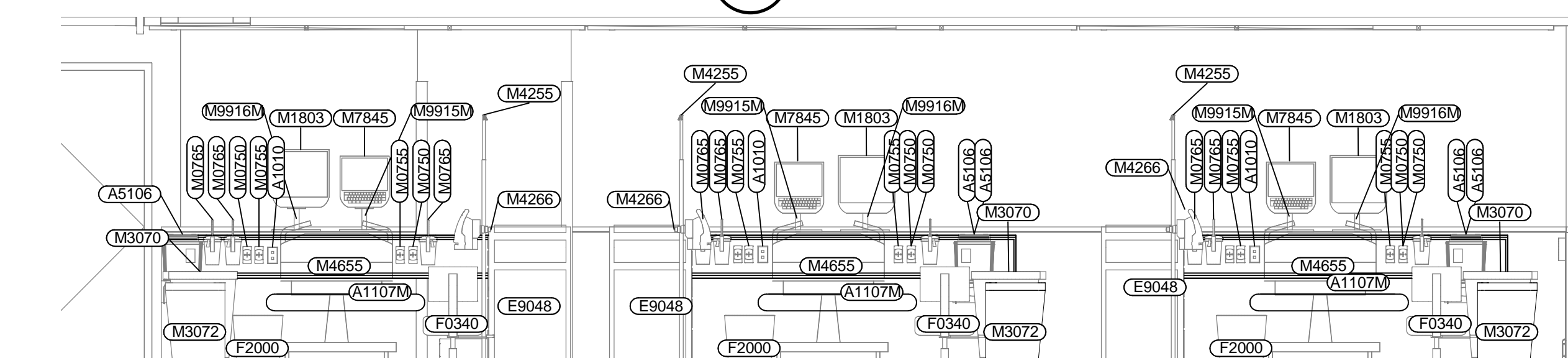
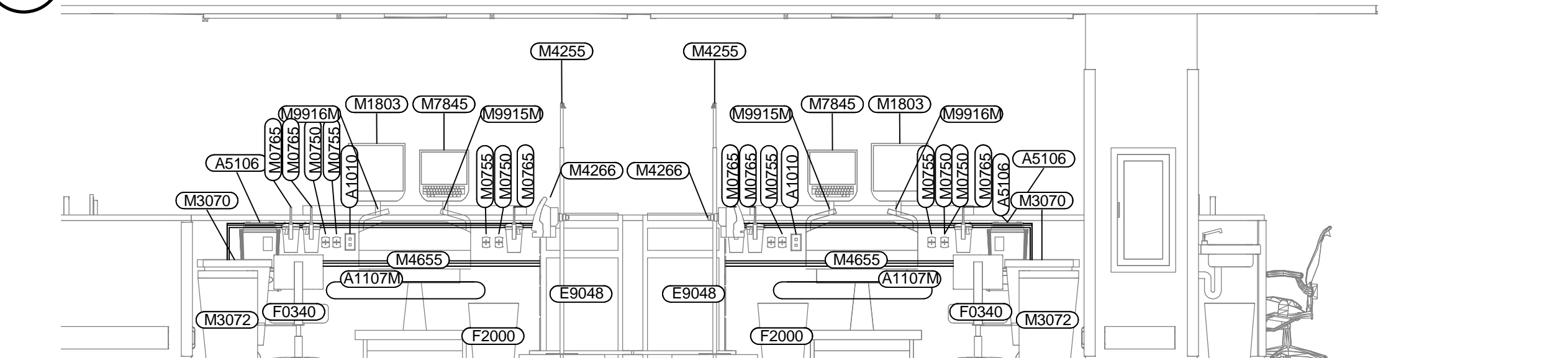
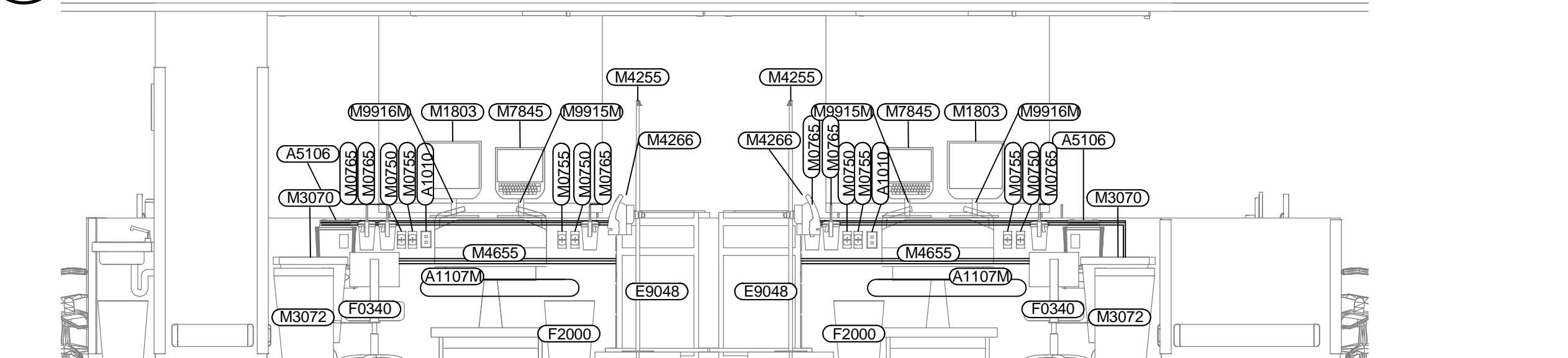
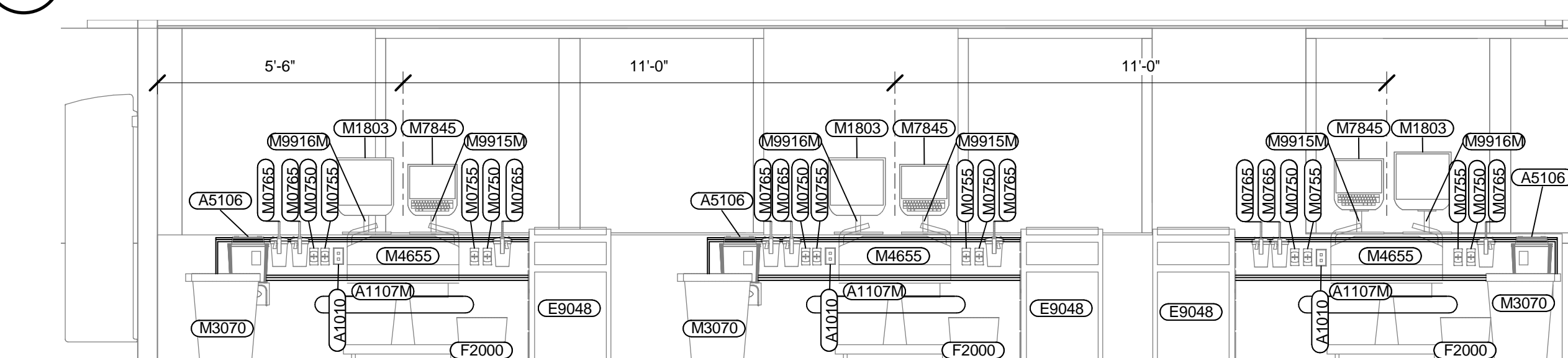
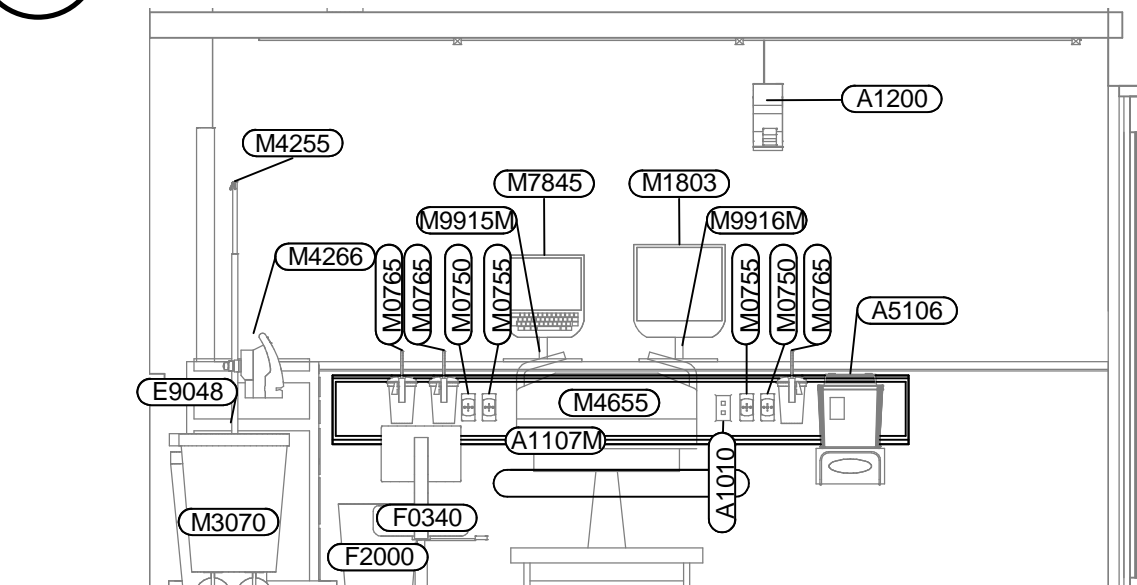
D

E

F

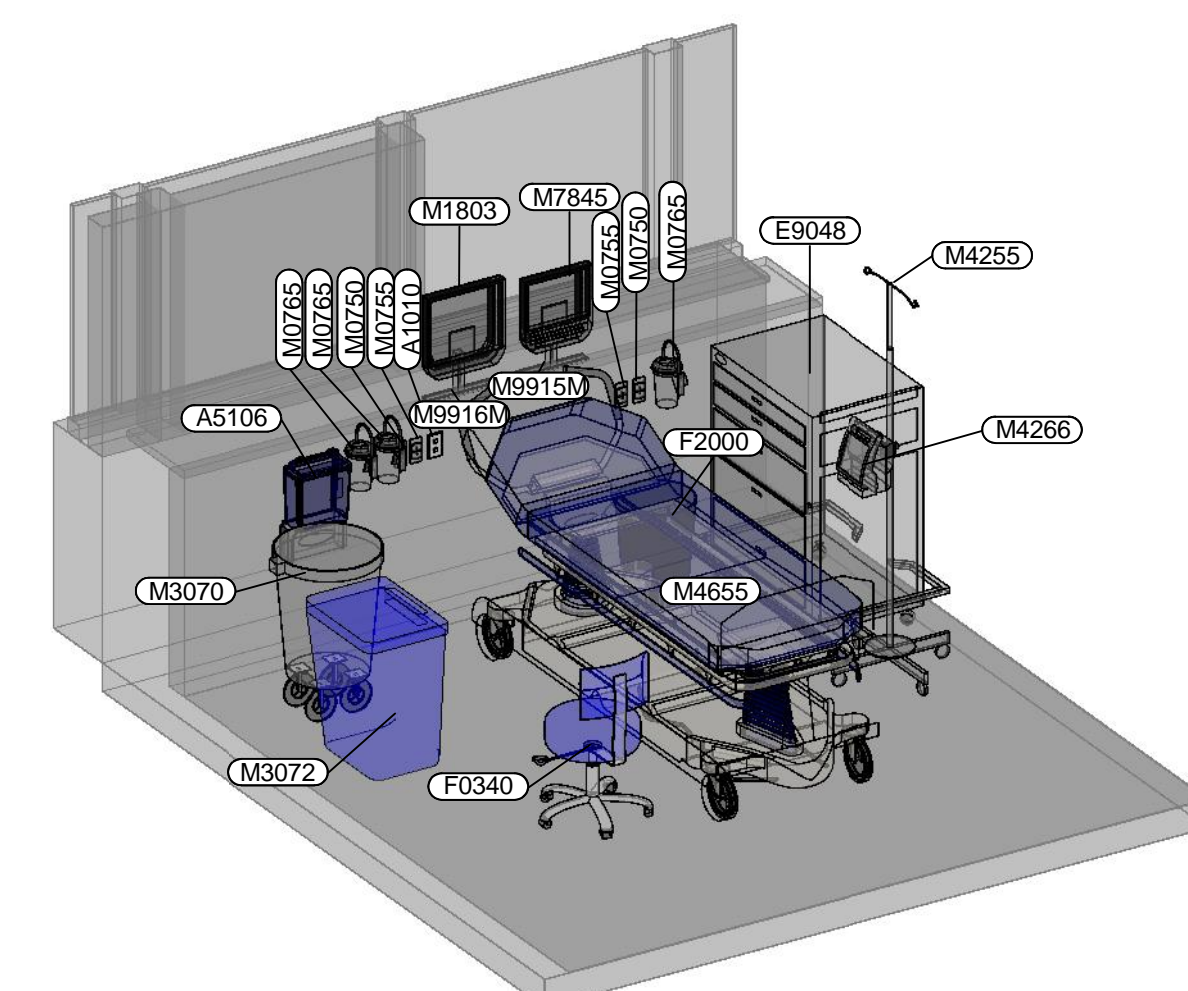
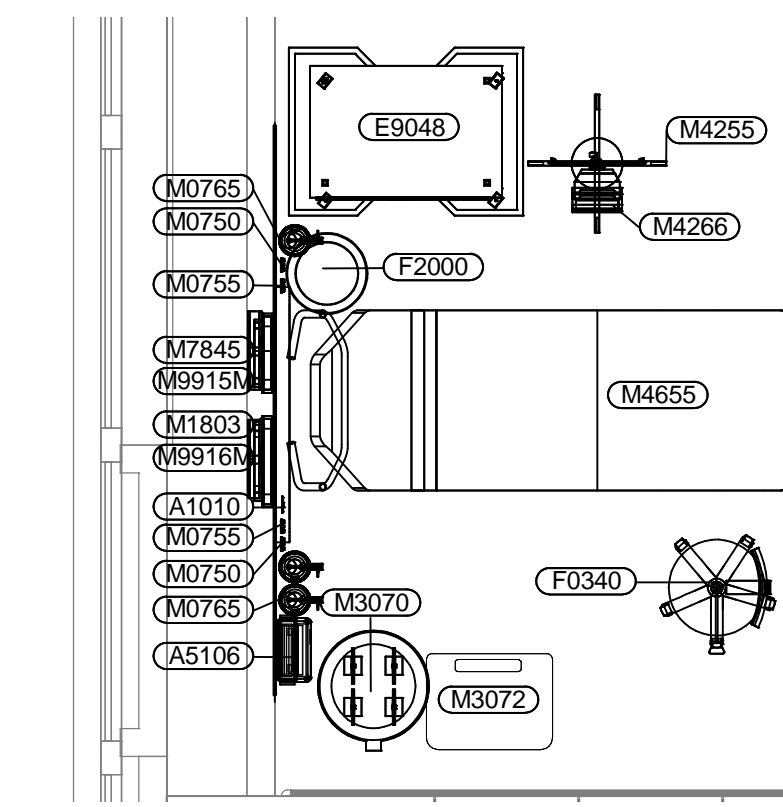


PHASE 2 - SEE A7/Q-101

A7 PACU LOUNGE 3A165 - PHASE 2  
SCALE: 1/4" = 1'-0"B5 PACU - BED CUBICLES - 3A158, 3A159, 3A160 - PHASE 1  
SCALE: 3/8" = 1'-0"C5 PACU - BED CUBICLES - 3A156, 3A157 - PHASE 1  
SCALE: 3/8" = 1'-0"D5 PACU - BED CUBICLES - 3A154, 3A155 - PHASE 1  
SCALE: 3/8" = 1'-0"E5 PACU - BED CUBICLES - 3A145, 3A146, 3A147 - PHASE 1  
SCALE: 3/8" = 1'-0"F5 PACU - ISOLATION (TYPICAL) - PHASE 1  
SCALE: 3/8" = 1'-0"

MARK	DESCRIPTION
A1010	Telecommunication Outlet
A1012	Telephone, Wall mounted, one line
A1015	Telephone, desk, multiple line
A1200	Lift-Patient Ceiling Mounted
A5106	Waste, Disposal Unit, Sharps with Glove Dispenser
E0903	Locker Supply, Wall Mtd, Shelves
E0906	Locker Supply, Wall Mtd, General
E0912	Locker Supply, Med Surg, Wall Mtd
E0921	Transporter, Locker Supply
E0954	Cart, Emergency Mobile
E1500	Rail System, Modular Casework
E9048	Cart, General Storage, Mobile 42H x 32W x 22D
F0280	Chair, Swivel, Low Back
F0340	Stool, Self Adjusting with back
F0530	Can, Trash, 44 Gallon
F2000	Basket, Wastepaper, Round, Metal
F2020	Can, Trash, 44 Gallon
F3200	Clock, Battery 12in Diameter
M0750	Flowmeter, Air, Connect with 50 psi Supply
M0755	Flowmeter, Oxygen, Low Flow
M0765	Regulator, Vacuum
M1605	Holder, Chart - 20 capacity
M1801	Computer
M1803	Computer, EMR
M1820	Imprinter, Data Record, Electric
M1840	Printer, Copier, Fax Combination
M3070	Hamper-Linen
M3072	Frame, Infectious Waste Bag with Lid
M3110	Cabinet, Warming, F-5, 2 Heated Compartment Elect
M3150	Dispenser-Medication - Omnicell
M4255	Stand, IV, Adjustable
M4266	Pump, Volumetric, Infusion, Multiple Line
M4655	Stretcher, Mobile, CRS, 9 Position
M7650	Defibrillator, Monitor, Recorder Automatic
M7845	Monitor, Physiological, Bedside, 4 Channel
M7850	Monitor-Physiological-Central Station- 8 Bed
M915M	Bracket, Physiological Monitor, Counter Top
M9916M	Bracket, Computer, Counter Top

MARK	DESCRIPTION
A1010	Telecommunication Outlet
A1012	Telephone, Wall mounted, one line
A1107M	Rail System, Utility, Gas & Electric
A5220	Bracket, Television, Wall Mounted
F0500	Cart, Housekeeping 38Hx66Wx20D
F0505	Mop Bucket
F2000	Basket, Wastepaper, Round, Metal
F3200	Clock, Battery 12in Diameter
K4665	Oven, Microwave, Consumer
M2XX	Waste Management System
M0500	Television, Color, 20 Diagonal
M3072	Frame, Infectious Waste Bag with Lid
M4815	Hypo, Hyperthermia Unit, Automatic-Manual, Mobile
M8810	Stand, Mayo
M8900	Carriage, Pail, CRS, Without Pail
M8905	Pail, Utility, CRS Without Carriage
M8920	Stand, Basin, CRS, Mobile, Double
R7000	Refrigerator, 14 Cubic Feet

D9 3D VIEW OF PACU 3A145 (TYPICAL)  
SCALE: 1/4" = 1'-0"F9 ENLARGED PLAN - PACU BAY - TYPICAL  
SCALE: 3/8" = 1'-0"F1 PACU EQUIPMENT PLAN - PHASE 1  
SCALE: 1/4" = 1'-0"

Revisions	Description	Date

CONSULTANTS:

**HW Resources, LLC**  
Equipment Planning Services

ARCHITECT/ENGINEER:

**WMF**  
WEBER MURPHY FOX  
ARCHITECTURE INTERIORS CONSTRUCTION  
1425 SOUTH CHURCH SUITE D, SECOND FL CHARLOTTE, NC 28203  
T: 704.200.5231  
F: 704.910.5818  
www.wmfefac.com  
ERIE CLEVELAND STATE COLLEGE CHARLOTTE

PROJECT NUMBER: 2010.066.00  
C/D FILE: C:\Users\jmurphy\Documents\2010.066.Equipment14  
COPYRIGHT © WEBER MURPHY FOX INC. 2011

Drawing Title:  
**PACU EQUIPMENT PLAN - PHASE 1 & 2**

Approved/Project Director:

Project Title:  
**VAPH'S OPERATING ROOM EXPANSION**

Location: (UD) UNIVERSITY DRIVE DIVISION  
PITTSBURGH, PA 15240

Date: 09/10/13  
Checked: HW  
Drawn: HW

Project Number:  
646-09-131  
Building Number:  
ONE  
Drawing Number:  
Q-101

Dwg 1 of 4

CONSTRUCTION DOCUMENTS  
FULLY SPRINKLERED

Office of  
Construction  
and Facilities  
Management

Department of  
Veterans Affairs