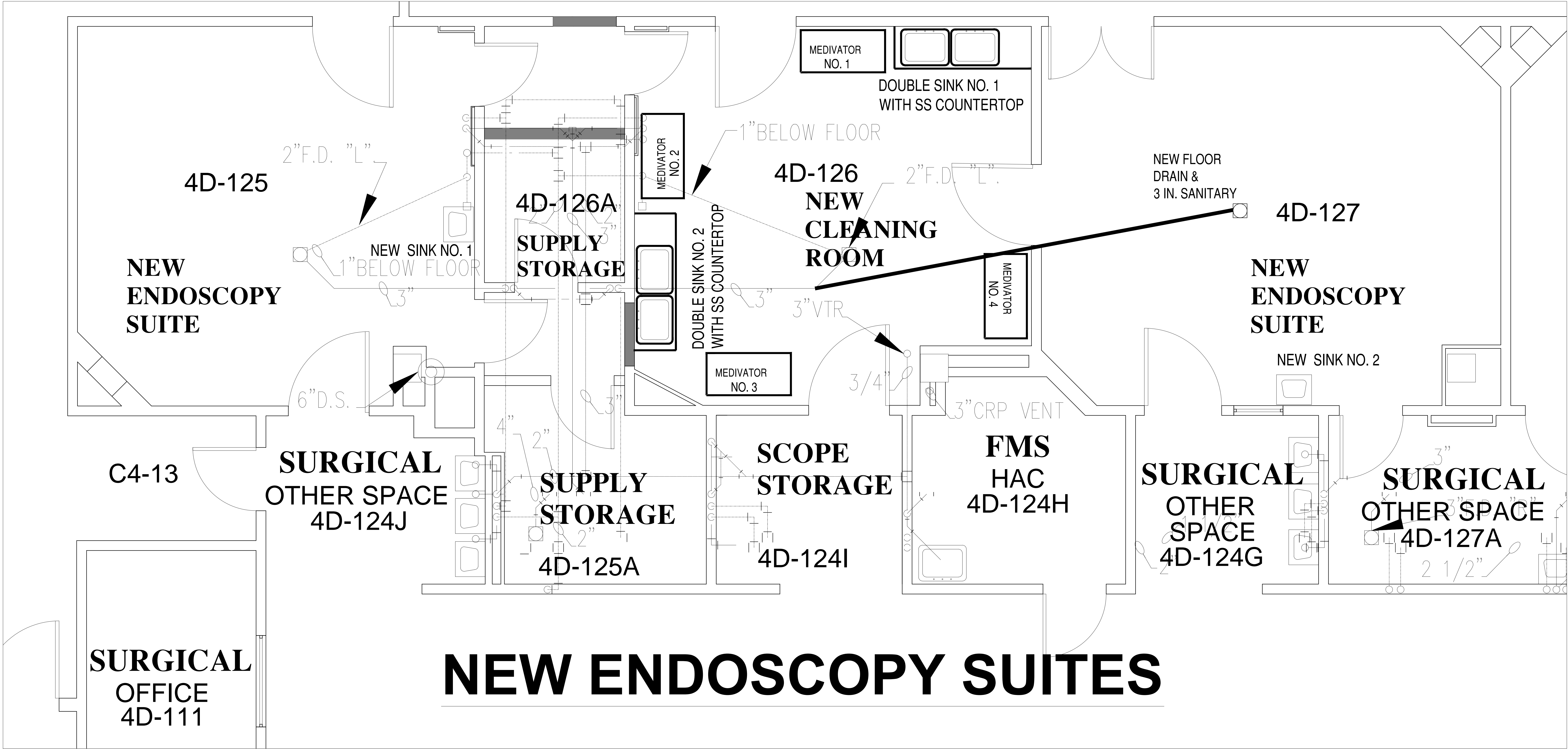


three inches = one foot  
one and one-half inches = one foot  
one inch = one foot  
three-quarters inch = one foot  
one-half inch = one foot  
three-eighths inch = one foot  
one-quarter inch = one foot  
one-eighth inch = one foot



# NEW ENDOSCOPY SUITES

## PLUMBING GENERAL NOTES

1. INSTALL LAVATORY IN NEW ENDOSCOPY SUITES WITH SENSOR CONTROL AS SHOWN. TIE NEW LAVATORIES INTO EXIST HOT AND COLD WATER AT NEAREST LOCATION AND CONNECT TO EXIST. SANITARY, 4 EACH – FOUR INCH CORE DRILLS REQ'D.
2. CONNECT NEW DOUBLE SINKS (CONTRACTOR PROVIDED) TO HOT & COLD WATER UTIL. AND EXIST. SANITARY. CONNECT MEDIVATORS 1,2 & 3 TO EXIST. H/C WATER AND EXIST. SANITARY. MEDIVATOR 4 SHOWN IS FUTURE.
3. INSTALL INSTRUMENT AIR HOSE REEL IN NEW CLEANING ROOM NEXT TO DOUBLE SINK NO. 1. COORDINATE WITH COR FOR EXACT LOCATION. CONNECT TO MEDGAS SYSTEM AND EXTEND INSTRUMENT AIR TO SPECIFIED LOCATION.
4. INSTALL NEW FLOOR DRAIN AND 3 INCH SANITARY IN ENDO SUITE ROOM 4D-127. FOUR INCH DIA. CORE DRILL REQ'D.
5. PROVIDE 1/2 INCH INCOMING WATER SUPPLY LINE FOR EACH MEDIVATOR WITH SHUT-OFF VALVE BEFORE PRE-FILTER.

Revisions	Date	NOTES:	SCALE : 1/2" = 1'-0"	Approved: PROGRAM MANAGER, PROJECTS SAFETY/INDUSTRIAL HYGIENE HEALTH SYSTEM SPECIALIST MAINTENANCE SUPERVISOR MAINTENANCE FOREMAN MAINTENANCE FOREMAN	Drawing Title <b>PLUMBING PLAN</b> Approved: Service Engineer Approved: Service Director	Project Title <b>RENOVATE CYSTO TO STERILE CLEANING, BLDG. 3</b> Building Number B3 Location VAMC BILOXI, MS	Date 07/16/13 Project No. 520-13-130 DRAWING NO. <b>PL 001</b> Dwg. 1 of 1	Office of Facilities Department of Veterans Affairs
-----------	------	--------	----------------------	---	---	---	--	--