

AIR FLOW MEASURING DEVICE SCHEDULE													
MARK	LOCATION	SYSTEM AND/OR SERVICE	AIR FLOW				DUCT SIZE				APD		REMARKS
			MIN		MAX		WIDTH		HEIGHT				
			CFM	[L/s]	CFM	[L/s]	IN	[mm]	IN	[mm]	IN	[mm]	
149A	SUPPLY AIR	AHU-149	0	[ ]	30000	[14000]	22	[550]	0	[ ]	0.05	[1]	ONE DEVICE AT INLET OF EACH FAN IN FAN ARRAY
149B	RETURN AIR	AHU-149	0	[ ]	21000	[9900]	22	[550]	0	[ ]	0.05	[1]	ONE DEVICE AT INLET OF EACH FAN IN FAN ARRAY
149C	OUTSIDE AIR	AHU-149	0	[ ]	30000	[14000]	52	[1300]	36	[900]	0.05	[1]	
150A	SUPPLY AIR	AHU-150	0	[ ]	16000	[7600]	25	[630]	0	[ ]	0.05	[1]	ONE DEVICE AT INLET OF EACH FAN IN FAN ARRAY
150B	RETURN AIR	AHU-150	0	[ ]	12000	[5700]	25	[630]	0	[ ]	0.05	[1]	ONE DEVICE AT INLET OF EACH FAN IN FAN ARRAY
150C	OUTSIDE AIR	AHU-150	0	[ ]	16000	[7600]	50	[1300]	24	[600]	0.05	[1]	

SMOKE AND COMBINATION FIRE/SMOKE DAMPER SCHEDULE									
MARK	LOCATION	FAN SYSTEM	SYSTEM AND/OR SERVICE	DUCT SIZE		DUCT PRESSURE CLASS		REMARKS	
				IN	[mm]	IN WG	[Pa]		
SD-149A	A-WING PENTHOUSE	RRF-149	AHU-149	75x42	[1875x1050]	7.5	[1900]		
SD-149B	A-WING PENTHOUSE	SAF-149	AHU-149	124x30	[3100 x750]	8	[2000]		
SD-150A	B-WING PENTHOUSE	SAF-150	AHU-150	52x36	[1300x900]	8	[2000]		
SD-150B	B-WING PENTHOUSE	RRF-150	AHU-150	30x50	[750x1250]	3	[750]		
FSD-146A	D-WING 7TH FLOOR	AHU-146	EF-701	18x18	[450x450]	(1)	-		
FSD-146B	D-WING 7TH FLOOR	AHU-146	AHU-146	12x10	[300x250]	(1)	-		
FSD-146C	D-WING 7TH FLOOR	(2)	EXISTING PRV (ON ROOF)	18x14	[450x350]	(1)	-		
FSD-146D	D-WING 7TH FLOOR	(2)	EXISTING PRV (ON ROOF)	18x14	[450x350]	(1)	[300]		
FSD-EF8B2A	B-WING 7TH FLOOR	(2)	EF8B2	16x4	[400x100]	1.5	[380]		
FSD-EF8B2B	B-WING 7TH FLOOR	(2)	EF8B2	12x12	[300x300]	1.5	[380]		
FSD-146E	D-WING 8TH FLOOR	AHU-146	AHU-146	12x10	[300x250]	(1)	-		
FSD-146F	D-WING 8TH FLOOR	AHU-146	EXISTING PRV (ON ROOF)	8x16	[200x400]	(1)	-		

(1) MATCH EXISTING DUCT PRESSURE CLASS FOR AHU-146 SYSTEM.

(2) VERIFY AHU SYSTEM WITH PLANT OPERATIONS.

AIR FILTER SCHEDULE																
MARK	LOCATION	AREA AND/OR BLDG SERVED	SYSTEM AND/OR SERVICE	MERV RATING	AIR FLOW		APD				HOUSING TYPE	#	CARTRIDGES			REMARKS
							INITIAL		CHANGEOVER				SIZE	ARRANGEMENT		
					CFM	[L/s]	IN	[mm]	IN	[mm]			IN		[mm]	
F-149A	A-WING PENTHOUSE	8TH FLOOR A-WING	AHU-149	8	30000	[14000]	0.3	[8]	0.7	[18]	SIDE SERVICE	20	2x20x24	50x500x600	PER MFR	
F-149B	A-WING PENTHOUSE	8TH FLOOR A-WING	AHU-149	11	30000	[14000]	0.3	[8]	0.5	[13]	SIDE SERVICE	20	12x20x24	300x500x600	PER MFR	
F-149C	A-WING PENTHOUSE	8TH FLOOR A-WING	AHU-149	17 (HEPA)	30000	[14000]	1	[25]	2	[50]	(1)	3	12x24x12	300x600x300	PER MFR	
F-150A	B-WING PENTHOUSE	8TH FLOOR B-WING	AHU-150	8	16000	[7600]	0.3	[8]	0.7	[18]		SIDE SERVICE	4	2x12x24		50x300x600
F-150B	B-WING PENTHOUSE	8TH FLOOR B-WING	AHU-150	11	16000	[7600]	0.3	[8]	0.5	[13]	SIDE SERVICE	4	2x12x24	50x300x600	PER MFR	
F-150B	B-WING PENTHOUSE	8TH FLOOR B-WING	AHU-150	8	16000	[7600]	0.3	[8]	0.5	[13]	(1)	4	12x12x24	300x300x600	PER MFR	
F-150C	B-WING PENTHOUSE	8TH FLOOR B-WING	AHU-150	17 (HEPA)	16000	[7600]	1	[25]	2	[50]		SIDE SERVICE	3	12x24x30		300x600x750
F-150C	B-WING PENTHOUSE	8TH FLOOR B-WING	AHU-150	17 (HEPA)	16000	[7600]	1	[25]	2	[50]		3	12x30x24	300x750x600	PER MFR	

NOTE:  
(1) SIDE OR FRONT SERVICE.

RADIANT CEILING PANEL SCHEDULE (HYDRONIC )															
MARK	ROOM LOCATION	AREA SERVED	PANEL SIZE		HEATING										REMARKS
					HEATING CAPACITY		EWT		LWT		HOT WATER FLOWRATE		WPD		
			IN	[mm]	BTU/HLF	[W]	°F	[°C]	°F	[°C]	GPM	[L/m]	FT	[kPa]	
RCP-1	SEE PLAN	SEE PLAN	24" WIDE SEE DWG FOR LENGTH	[600 x _]	290	[85]	190	[88]	170	[77]	0.11LF	[ ]	4	[12]	

SINGLE DUCT AIR TERMINAL UNIT SCHEDULE																			
MARK	LOCATION	AREA AND/OR ROOM SERVED	SYSTEM AIR HANDLING	SIZE	AIR FLOW				ADDITIONAL SOUND ATTUNATION REQUIRED	CONTROL TYPE	CONTROL SEQUENCE	REHEAT			PERIMETER SUPPLEMENTAL HEAT LINK	REMARKS			
					MAX	MIN		CFM				[L/s]	CFM	[L/s]			HW	ELEC	NONE
						CFM	[L/s]												
TAB-8D18	8TH FLOOR D-WING	D8030	AHU-146	10"	675	[320]	675	[320]	NO	DDC	DETAIL 7/MM504	(1)	-	-	NONE				
TAB-8D19	8TH FLOOR D-WING	D8025, D8028	AHU-146	8"	425	[200]	425	[200]	NO	DDC	DETAIL 7/MM504	(1)	-	-	NONE				
TAB-8D20	8TH FLOOR D-WING	D8015	AHU-146	10"	900	[420]	900	[420]	NO	DDC	DETAIL 7/MM504	(1)	-	-	NONE				
TAB-8D21	8TH FLOOR D-WING	D8013	AHU-146	8"	500	[240]	500	[240]	NO	DDC	DETAIL 7/MM504	(1)	-	-	NONE				
AV-20	8TH FLOOR D-WING	D8030	AHU-146	10"	375	[180]	375	[180]	NO	DDC	DETAIL 7/MM504	-	-	X	NONE	RETURN BOX FOR TAB-8D18			
AV-21	8TH FLOOR D-WING	D8020, D8028	AHU-146	8"	490	[230]	490	[230]	NO	DDC	DETAIL 7/MM504	-	-	X	NONE	RETURN BOX FOR TAB-8D19			

(1) SEE HW COIL SCHEDULE, SHEET MM-603 FOR COIL DATA/CAPACITY

AIR HANDLING UNIT SCHEDULE																						
MARK	LOCATION	AREA AND/OR BLDG SERVED	TYPE	AIR FLOW	AIR FLOW						SUPPLY FAN MARK	RETURN RELIEF FAN MARK	EXHAUST FAN MARK	PRE-FILTER MARK	AFTER FILTER MARK	FINAL FILTER MARK	HEAT RECOVERY MARK	PREHEAT COIL MARK	COOLING COIL MARK	REHEAT COIL	HUMIDIFIER MARK	REMARKS
					SUPPLY		MIN OA		RETURN													
					CFM	[L/s]	CFM	[L/s]	CFM	[L/s]												
AHU-149	A-WING PENTHOUSE	8TH FLOOR A-WING	PRE-ENGINEERED	CONSTANT	30000	[14000]	9000	[4200]	21000	[9900]	SAF-149	RRF-149	SEE FAN SCHED	F-149A	F-149B	F-149C	N/A	SHC-149	CC-149	N/A	SH-149	(1)
AHU-150	B-WING PENTHOUSE	8TH FLOOR B-WING	PRE-ENGINEERED	CONSTANT	16000	[7600]	8000	[3800]	12000	[5700]	SAF-150	RRF-150	SEE FAN SCHED	F-150A	F-150B	F-150C	N/A	SHC-150	CC-150	N/A	SH-150	(1)

(1) PROVIDE WITH MINIMUM 6" HIGH MANUFACTURERS BASE RAIL, SECTION FOR FUTURE UV LIGHTING AND 6 INTERNAL MARINE SEATTLE LIGHTS.

(1) PROVIDE WITH MINIMUM 8" HIGH MANUFACTURERS BASE RAIL, SECTION FOR FUTURE UV LIGHTING AND 6 INTERNAL MARINE SERVICE LIGHTS.

CHILLED WATER COOLING COIL SCHEDULE																														
MARK	LOCATION	AREA AND/OR BLDG SERVED	SYSTEM AND/OR SERVICE	AIR FLOW		MAX FACE VELOCITY		APD		EAT				LAT				TOTAL CAPACITY		SENSIBLE CAPACITY		CHILLED WATER						REMARKS		
				CFM	[L/s]	FPM	[M/s]			IN WG	[Pa]	Db		Wb		Db						Wb		EWT		LWT			WPD	
								°F	[°C]			°F	[°C]	°F	[°C]	°F	[°C]	GPM	[L/s]	°F	[°C]	°F	[°C]	FT	[M]					
CC-149	A-WING PENTHOUSE	8TH FLOOR A-WING	AHU-149	30000	[14000]	500	[3]	0.8	[200]	81	[27]	67	[19]	52	[11]	51.5	[11]	1375	[400]	960	[280]	275	[17]	45	[7]	55	[13]	14	[4]	(1) (2)
CC-150	B-WING PENTHOUSE	8TH FLOOR B-WING	AHU-150	16000	[7600]	500	[3]	1.0	[260]	95	[35]	75	[24]	52	[11]	51.5	[11]	1225	[360]	765	[220]	275	[17]	45	[7]	55	[13]	7.5	[2]	(1)

**NOTE**

(1) COOLING COIL FIN SPACING SHALL NOT EXCEED 132 FINS PER FOOT [400 FINS PER METER].

(2) SCHEDULED DATA IS FOR FULL/FUTURE COOLING COIL CAPACITY. PROVIDE BLANK-OFF PANEL AT ENTERING AIR SIDE OF TOP COIL AND CLOSE ISOLATION VALVES FOR PRESENT DEIGN CAPACITY.

NOTE

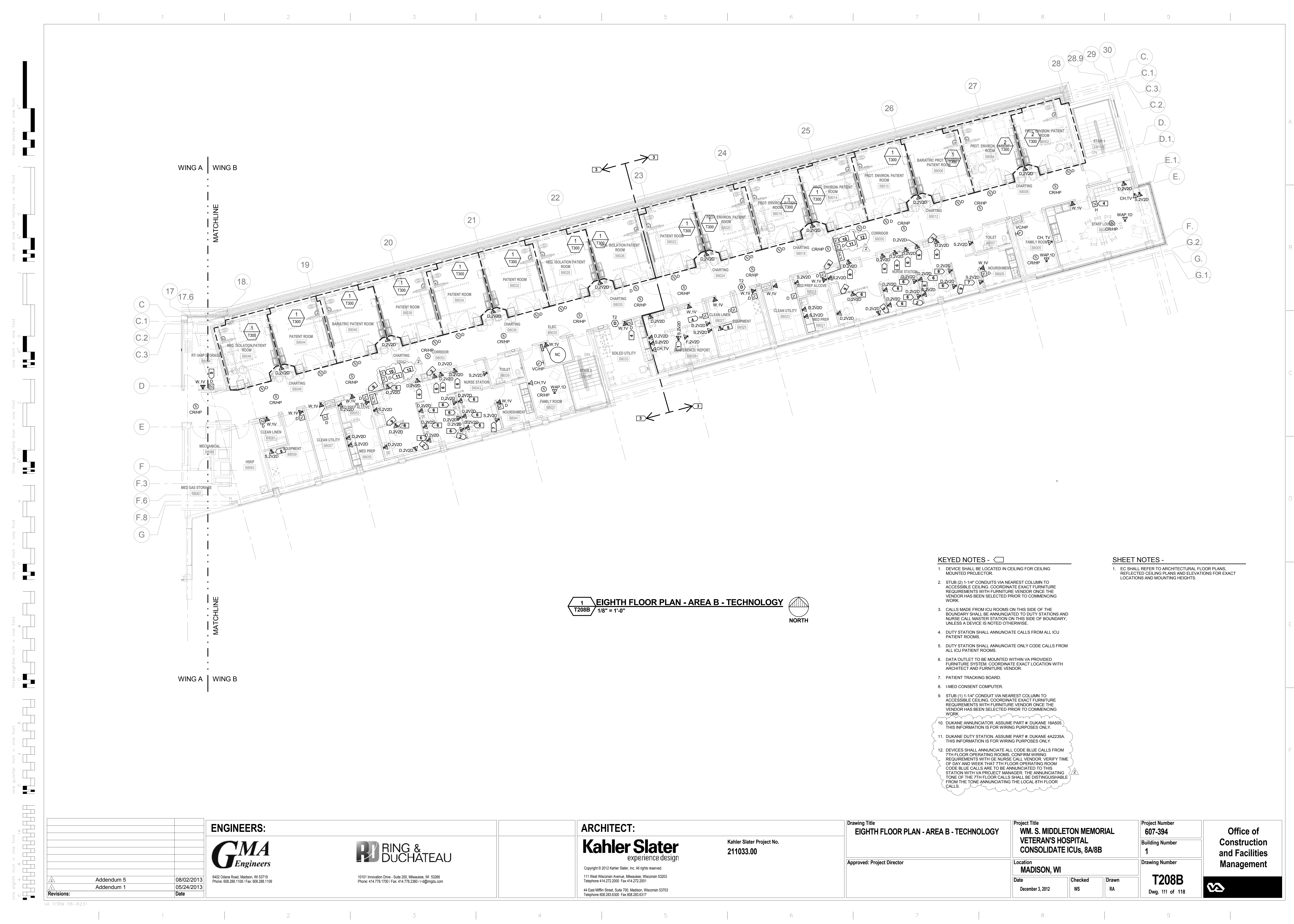
(1) COOLING COIL FIN SPACING SHALL NOT EXCEED 132 FINS PER FOOT [400 FINS PER METER].

(2) SCHEDULED DATA IS FOR FULL/FUTURE COOLING COIL CAPCITY. PROVIDE BLANK-OFF PANEL AT ENTERING AIR SIDE OF TOP COIL AND CLOSE ISOLATION VALVES FOR PRESENT DEISGN CAPACITY.

STEAM HEATING COIL SCHEDULE																																																																																																																																																																																																																																																																																																																																																																																																																																																																																																																																																																																																																																																																																														
MARK	LOCATION	AREA AND/OR BLDG SERVED	SYSTEM AND/OR SERVICE	APPLICATION	AIR FLOW		MAX FACE VELOCITY		APD	TEMPERATURES				TOTAL MIN CAPACITY		STEAM						REMARKS																																																																																																																																																																																																																																																																																																																																																																																																																																																																																																																																																																																																																																																																								
					CFM	[L/s]	FPM	[M/s]		EAT		LAT		MBH	[kW]	PSIG	[kPa]	PSIG	[kPa]	LBS/HR	[kg/HR]		FLOW		STEAM TRAP																																																																																																																																																																																																																																																																																																																																																																																																																																																																																																																																																																																																																																																																					
										*F	*[°C]	*F	*[°C]										ENT CONT VALVE	ENT COIL	ENT COIL	ENT COIL	ENT COIL	ENT COIL	ENT COIL	ENT COIL	ENT COIL	ENT COIL	ENT COIL	ENT COIL	ENT COIL	ENT COIL	ENT COIL	ENT COIL	ENT COIL	ENT COIL	ENT COIL	ENT COIL	ENT COIL	ENT COIL	ENT COIL	ENT COIL	ENT COIL	ENT COIL	ENT COIL	ENT COIL	ENT COIL	ENT COIL	ENT COIL	ENT COIL	ENT COIL	ENT COIL	ENT COIL	ENT COIL	ENT COIL	ENT COIL	ENT COIL	ENT COIL	ENT COIL	ENT COIL	ENT COIL	ENT COIL	ENT COIL	ENT COIL	ENT COIL	ENT COIL	ENT COIL	ENT COIL	ENT COIL	ENT COIL	ENT COIL	ENT COIL	ENT COIL	ENT COIL	ENT COIL	ENT COIL	ENT COIL	ENT COIL	ENT COIL	ENT COIL	ENT COIL	ENT COIL	ENT COIL	ENT COIL	ENT COIL	ENT COIL	ENT COIL	ENT COIL	ENT COIL	ENT COIL	ENT COIL	ENT COIL	ENT COIL	ENT COIL	ENT COIL	ENT COIL	ENT COIL	ENT COIL	ENT COIL	ENT COIL	ENT COIL	ENT COIL	ENT COIL	ENT COIL	ENT COIL	ENT COIL	ENT COIL	ENT COIL	ENT COIL	ENT COIL	ENT COIL	ENT COIL	ENT COIL	ENT COIL	ENT COIL	ENT COIL	ENT COIL	ENT COIL	ENT COIL	ENT COIL	ENT COIL	ENT COIL	ENT COIL	ENT COIL	ENT COIL	ENT COIL	ENT COIL	ENT COIL	ENT COIL	ENT COIL	ENT COIL	ENT COIL	ENT COIL	ENT COIL	ENT COIL	ENT COIL	ENT COIL	ENT COIL	ENT COIL	ENT COIL	ENT COIL	ENT COIL	ENT COIL	ENT COIL	ENT COIL	ENT COIL	ENT COIL	ENT COIL	ENT COIL	ENT COIL	ENT COIL	ENT COIL	ENT COIL	ENT COIL	ENT COIL	ENT COIL	ENT COIL	ENT COIL	ENT COIL	ENT COIL	ENT COIL	ENT COIL	ENT COIL	ENT COIL	ENT COIL	ENT COIL	ENT COIL	ENT COIL	ENT COIL	ENT COIL	ENT COIL	ENT COIL	ENT COIL	ENT COIL	ENT COIL	ENT COIL	ENT COIL	ENT COIL	ENT COIL	ENT COIL	ENT COIL	ENT COIL	ENT COIL	ENT COIL	ENT COIL	ENT COIL	ENT COIL	ENT COIL	ENT COIL	ENT COIL	ENT COIL	ENT COIL	ENT COIL	ENT COIL	ENT COIL	ENT COIL	ENT COIL	ENT COIL	ENT COIL	ENT COIL	ENT COIL	ENT COIL	ENT COIL	ENT COIL	ENT COIL	ENT COIL	ENT COIL	ENT COIL	ENT COIL	ENT COIL	ENT COIL	ENT COIL	ENT COIL	ENT COIL	ENT COIL	ENT COIL	ENT COIL	ENT COIL	ENT COIL	ENT COIL	ENT COIL	ENT COIL	ENT COIL	ENT COIL	ENT COIL	ENT COIL	ENT COIL	ENT COIL	ENT COIL	ENT COIL	ENT COIL	ENT COIL	ENT COIL	ENT COIL	ENT COIL	ENT COIL	ENT COIL	ENT COIL	ENT COIL	ENT COIL	ENT COIL	ENT COIL	ENT COIL	ENT COIL	ENT COIL	ENT COIL	ENT COIL	ENT COIL	ENT COIL	ENT COIL	ENT COIL	ENT COIL	ENT COIL	ENT COIL	ENT COIL	ENT COIL	ENT COIL	ENT COIL	ENT COIL	ENT COIL	ENT COIL	ENT COIL	ENT COIL	ENT COIL	ENT COIL	ENT COIL	ENT COIL	ENT COIL	ENT COIL	ENT COIL	ENT COIL	ENT COIL	ENT COIL	ENT COIL	ENT COIL	ENT COIL	ENT COIL	ENT COIL	ENT COIL	ENT COIL	ENT COIL	ENT COIL	ENT COIL	ENT COIL	ENT COIL	ENT COIL	ENT COIL	ENT COIL	ENT COIL	ENT COIL	ENT COIL	ENT COIL	ENT COIL	ENT COIL	ENT COIL	ENT COIL	ENT COIL	ENT COIL	ENT COIL	ENT COIL	ENT COIL	ENT COIL	ENT COIL	ENT COIL	ENT COIL	ENT COIL	ENT COIL	ENT COIL	ENT COIL	ENT COIL	ENT COIL	ENT COIL	ENT COIL	ENT COIL	ENT COIL	ENT COIL	ENT COIL	ENT COIL	ENT COIL	ENT COIL	ENT COIL	ENT COIL	ENT COIL	ENT COIL	ENT COIL	ENT COIL	ENT COIL	ENT COIL	ENT COIL	ENT COIL	ENT COIL	ENT COIL	ENT COIL	ENT COIL	ENT COIL	ENT COIL	ENT COIL	ENT COIL	ENT COIL	ENT COIL	ENT COIL	ENT COIL	ENT COIL	ENT COIL	ENT COIL	ENT COIL	ENT COIL	ENT COIL	ENT COIL	ENT COIL	ENT COIL	ENT COIL	ENT COIL	ENT COIL	ENT COIL	ENT COIL	ENT COIL	ENT COIL	ENT COIL	ENT COIL	ENT COIL	ENT COIL	ENT COIL	ENT COIL	ENT COIL	ENT COIL	ENT COIL	ENT COIL	ENT COIL	ENT COIL	ENT COIL	ENT COIL	ENT COIL	ENT COIL	ENT COIL	ENT COIL	ENT COIL	ENT COIL	ENT COIL	ENT COIL	ENT COIL	ENT COIL	ENT COIL	ENT COIL	ENT COIL	ENT COIL	ENT COIL	ENT COIL	ENT COIL	ENT COIL	ENT COIL	ENT COIL	ENT COIL	ENT COIL	ENT COIL	ENT COIL	ENT COIL	ENT COIL	ENT COIL	ENT COIL	ENT COIL	ENT COIL	ENT COIL	ENT COIL	ENT COIL	ENT COIL	ENT COIL	ENT COIL	ENT COIL	ENT COIL	ENT COIL	ENT COIL	ENT COIL	ENT COIL	ENT COIL	ENT COIL	ENT COIL	ENT COIL	ENT COIL	ENT COIL	ENT COIL	ENT COIL	ENT COIL	ENT COIL	ENT COIL	ENT COIL	ENT COIL	ENT COIL	ENT COIL	ENT COIL	ENT COIL	ENT COIL	ENT COIL	ENT COIL	ENT COIL	ENT COIL	ENT COIL	ENT COIL	ENT COIL	ENT COIL	ENT COIL	ENT COIL	ENT COIL	ENT COIL	ENT COIL	ENT COIL	ENT COIL	ENT COIL	ENT COIL	ENT COIL	ENT COIL	ENT COIL	ENT COIL	ENT COIL	ENT COIL	ENT COIL	ENT COIL	ENT COIL	ENT COIL	ENT COIL	ENT COIL	ENT COIL	ENT COIL	ENT COIL	ENT COIL	ENT COIL	ENT COIL	ENT COIL	ENT COIL	ENT COIL	ENT COIL	ENT COIL	ENT COIL	ENT COIL	ENT COIL	ENT COIL	ENT COIL	ENT COIL	ENT COIL	ENT COIL	ENT COIL	ENT COIL	ENT COIL	ENT COIL	ENT COIL	ENT COIL	ENT COIL	ENT COIL	ENT COIL	ENT COIL	ENT COIL	ENT COIL	ENT COIL	ENT COIL	ENT COIL	ENT COIL	ENT COIL	ENT COIL	ENT COIL	ENT COIL	ENT COIL	ENT COIL	ENT COIL	ENT COIL	ENT COIL	ENT COIL	ENT COIL	ENT COIL	ENT COIL	ENT COIL	ENT COIL	ENT COIL	ENT COIL	ENT COIL	ENT COIL	ENT COIL	ENT COIL	ENT COIL	ENT COIL	ENT COIL	ENT COIL	ENT COIL	ENT COIL	ENT COIL	ENT COIL	ENT COIL	ENT COIL	ENT COIL	ENT COIL	ENT COIL	ENT COIL	ENT COIL	ENT COIL	ENT COIL	ENT COIL	ENT COIL	ENT COIL	ENT COIL	ENT COIL	ENT COIL	ENT COIL	ENT COIL	ENT COIL	ENT COIL	ENT COIL	ENT COIL	ENT COIL	ENT COIL	ENT COIL	ENT COIL	ENT COIL	ENT COIL	ENT COIL	ENT COIL	ENT COIL	ENT COIL	ENT COIL	ENT COIL	ENT COIL	ENT COIL	ENT COIL	ENT COIL	ENT COIL	ENT COIL	ENT COIL	ENT COIL	ENT COIL	ENT COIL	ENT COIL	ENT COIL	ENT COIL	ENT COIL	ENT COIL	ENT COIL	ENT COIL	ENT COIL	ENT COIL	ENT COIL	ENT COIL	ENT COIL	ENT COIL	ENT COIL	ENT COIL	ENT COIL	ENT COIL	ENT COIL	ENT COIL	ENT COIL	ENT COIL	ENT COIL	ENT COIL	ENT COIL	ENT COIL	ENT COIL	ENT COIL	ENT COIL	ENT COIL	ENT COIL	ENT COIL	ENT COIL	ENT COIL	ENT COIL	ENT COIL	ENT COIL	ENT COIL	ENT COIL	ENT COIL	ENT COIL	ENT COIL	ENT COIL	ENT COIL	ENT COIL	ENT COIL	ENT COIL	ENT COIL	ENT COIL	ENT COIL	ENT COIL	ENT COIL	ENT COIL	ENT COIL	ENT COIL	ENT COIL	ENT COIL	ENT COIL	ENT COIL	ENT COIL	ENT COIL	ENT COIL	ENT COIL	ENT COIL	ENT COIL	ENT COIL	ENT COIL	ENT COIL	ENT COIL	ENT COIL	ENT COIL	ENT COIL	ENT COIL	ENT COIL	ENT COIL	ENT COIL	ENT COIL	ENT COIL	ENT COIL	ENT COIL	ENT COIL	ENT COIL	ENT COIL	ENT COIL	ENT COIL	ENT COIL	ENT COIL	ENT COIL	ENT COIL	ENT COIL	ENT COIL	ENT COIL	ENT COIL	ENT COIL	ENT COIL	ENT COIL	ENT COIL	ENT COIL	ENT COIL

FAN SCHEDULE																																
MARK	LOCATION	AREA AND/OR BLDG SERVED	SYSTEM AND/OR SERVICE	AIR FLOW		TSP		FAN							MOTOR ELECTRICAL							CONTROL SEQUENCE	REMARKS									
				CFM	[L/s]	IN	[Pa]	TYPE	WHEEL	CLASS	ARRANGEMENT, ROTATION, AND DISCHARGE	DIAMETER		MIN % EFF	DRIVE	FAN MAX RPM	NOMINAL POWER			PHASE	VOLT			RPM	SPEED CONTROL							
													IN	[mm]					BHP	HP	[kW]											
SAF-149	A-WING PENTHOUSE	8TH FLOOR A-WING	AHU-149	30000	[14000]	8	[2000]	PLENUM	AF	2	ARRAY OF 4 FANS	22	[550]	60%	DIRECT	2675	60	4@20	[6@15]	3	208	2414	CONSTANT w/ VFDs	DETAIL 1/MM504	(1) ESP = 3.5"  ESP = 2.75"							
SAF-150	B-WING PENTHOUSE	8TH FLOOR B-WING	AHU-150	16000	[7600]	8	[2000]	PLENUM	AF	2	ARRAY OF 2 FANS	25	[630]	60%	DIRECT	2270	32	2@20	[2@15]	3	208	2116	CONSTANT w/ VFDs	DETAIL 1/MM504								
RRF-149	A-WING PENTHOUSE	8TH FLOOR A-WING	AHU-149	21000	[9900]	7.5	[1900]	PLENUM	AF	2	ARRAY OF 4 FANS	22	[550]	55%	DIRECT	2675	16.6	4@5	[4@4]	3	208	1531	CONSTANT w/ VFDs	DETAIL 1/MM504	(1) ESP = 2.75"  ESP = 2.75"							
RRF-150	B-WING PENTHOUSE	8TH FLOOR B-WING	AHU-150	12000	[5700]	3	[750]	PLENUM	AF	2	ARRAY OF 2 FANS	25	[630]	65%	DIRECT	2270	8.6	2@5	[4@4]	3	208	1330	CONSTANT w/ VFDs	DETAIL 1/MM504								
EF-8A1	A-WING ROOF	8TH FLOOR A-WING	AHU-149	1625	[770]	1	[250]	CENTRIFUGAL	BI	-	DOWN	14	[350]	50%	BELT	1726	0.6	1	[1]	3	208	1725	CONSTANT	DETAIL 8/MM504								
EF-8A2	A-WING ROOF	8TH FLOOR A-WING	AHU-149	2425	[1100]	1.5	[380]	CENTRIFUGAL	BI	-	DOWN	16	[400]	50%	BELT	1576	0.9	1.5	[1]	3	208	1725	CONSTANT	DETAIL 8/MM504								
EF-8B1	B-WING P.H. ROOF	8TH FLOOR B-WING PATIENT ROOM TOILETS	AHU-150	1975	[890]	2	[500]	CENTRIFUGAL	BI	-	HORIZONTAL DISCHARGE	15	[380]	50%	BELT	2113	1.11	1.5	[1]	3	208	1725	CONSTANT w/ VFDs	DETAIL 8/MM504								
EF-8B2	B-WING ROOF	8TH FLOOR B-WING NEG PRES. RMS	AHU-150	1960	[930]	2	[500]	CENTRIFUGAL	BI	-	UPBLAST	16	[400]	60%	BELT	1745	1.06	1.5	[1]	3	208	1725	CONSTANT	DETAIL 8/MM504								
EF-8B3	B-WING ROOF	8TH FLOOR B-WING PATIENT ROOM TOILETS	AHU-150	3000	[1400]	2	[500]	CENTRIFUGAL	BI	-	UPBLAST	18	[450]	60%	BELT	2156	1.3	3	[2]	3	208	1725	CONSTANT w/ VFDs	DETAIL 8/MM504								
EF-8B4	B-WING ROOF	8TH FLOOR B-WING STAFF/FAMILY LOUNGE	AHU-150	2350	[1100]	1	[250]	CENTRIFUGAL	BI	-	DOWN	18	[450]	60%	BELT	1460	0.7	1	[1]	3	208	1725	CONSTANT	DETAIL 8/MM504								
EF-8B5	B-WING PENTHOUSE	8TH FLOOR B-WING SUPPORT SPACES	AHU-150	1175	[550]	1.5	[380]	CENTRIFUGAL	BI	-	DOWN	14	[350]	45%	BELT	1960	0.7	1	[1]	3	208	1725	CONSTANT	DETAIL 8/MM504								
EF-8B6	MED GAS BR067	MED GAS BR067	AHU-150	200	[94]	0.75	[190]	CENTRIFUGAL	FC	-	HORIZONTAL DISCHARGE	11	[280]	-	DIRECT	981	0.11	0.11	[ ]	1	120	981	CONSTANT	DETAIL 8/MM504								
EF-8D1	D-WING ROOF	8TH FLOOR D-WING DECONTAMINATION	AHU-146	2100	[990]	2	[500]	CENTRIFUGAL	BI	-	DOWN	20	[500]	45%	BELT	1272	1.4	2	[2]	3	208	1725	CONSTANT	DETAIL 8/MM504								
NOTE																																
(1) SCHEDULED DATA IS FOR FULL/FUTURE CAPACITY. TO AID IN BALANCING FANS FOR PRESENT DESIGN CAPACITY, PROVIDE BLANK-OFF PANEL ON INLET SIDE OF TOP TWO FANS AND LOCK-OUT ASSOCIATED VFD'S. SEE SHEET MM504 FOR BALANCING DATA.																																





KEYED NOTES -

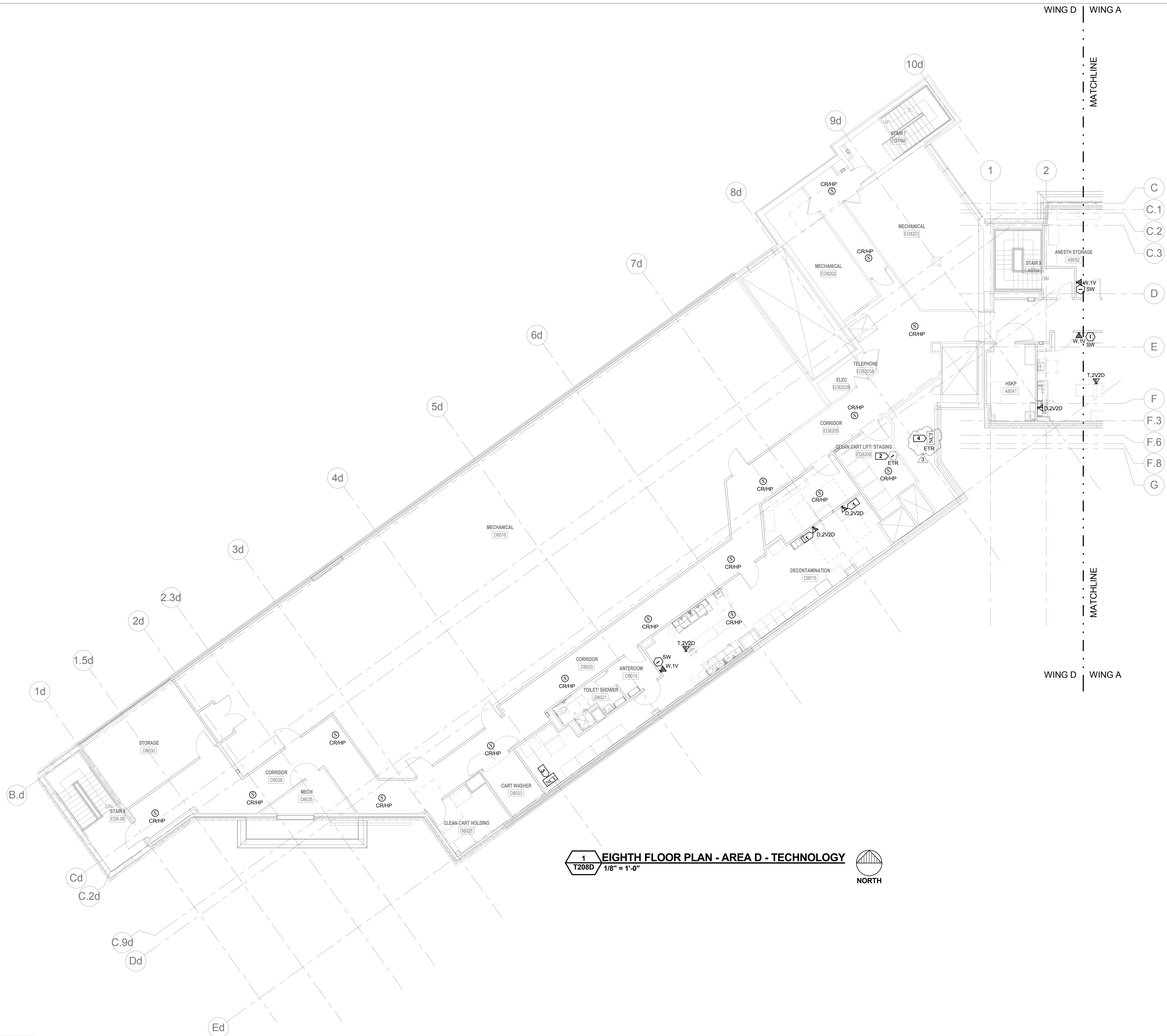
1. DEVICE SHALL BE LOCATED IN CEILING FOR CEILING MOUNTED PROJECTOR.
2. STUB (2) 1-1/4" CONDUITS VIA NEAREST COLUMN TO ACCESSIBLE CEILING. COORDINATE EXACT FURNITURE REQUIREMENTS WITH FURNITURE VENDOR ONCE THE VENDOR HAS BEEN SELECTED PRIOR TO COMMENCING WORK.
3. CALLS MADE FROM ICU ROOMS ON THIS SIDE OF THE BOUNDARY SHALL BE ANNUNCIATED TO DUTY STATIONS AND NURSE CALL MASTER STATION ON THIS SIDE OF BOUNDARY, UNLESS A DEVICE IS NOTED OTHERWISE.
4. DUTY STATION SHALL ANNUNCIATE CALLS FROM ALL ICU PATIENT ROOMS.
5. DUTY STATION SHALL ANNUNCIATE ONLY CODE CALLS FROM ALL ICU PATIENT ROOMS.
6. DATA OUTLET TO BE MOUNTED WITHIN VA PROVIDED FURNITURE SYSTEM. COORDINATE EXACT LOCATION WITH ARCHITECT AND FURNITURE VENDOR.
7. PATIENT TRACKING BOARD.
8. I-MED CONSENT COMPUTER.
9. STUB (1) 1-1/4" CONDUIT VIA NEAREST COLUMN TO ACCESSIBLE CEILING. COORDINATE EXACT FURNITURE REQUIREMENTS WITH FURNITURE VENDOR ONCE THE VENDOR HAS BEEN SELECTED PRIOR TO COMMENCING WORK.
10. DUKANE ANNUNCIATOR. ASSUME PART #: DUKANE 18A505. THIS INFORMATION IS FOR WIRING PURPOSES ONLY.
11. DUKANE DUTY STATION. ASSUME PART #: DUKANE 4A2235A. THIS INFORMATION IS FOR WIRING PURPOSES ONLY.
12. DEVICES SHALL ANNUNCIATE ALL CODE BLUE CALLS FROM 7TH FLOOR OPERATING ROOMS. CONFIRM WIRING REQUIREMENTS WITH GE NURSE CALL VENDOR. VERIFY TIME OF DAY AND WEEK THAT 7TH FLOOR OPERATING ROOM CODE BLUE CALLS ARE TO BE ANNUNCIATED TO THIS STATION WITH VA PROJECT MANAGER. THE ANNUNCIATING TONE OF THE 7TH FLOOR CALLS SHALL BE DISTINGUISHABLE FROM THE TONE ANNUNCIATING THE LOCAL 8TH FLOOR CALLS.

SHEET NOTES -

1. EC SHALL REFER TO ARCHITECTURAL FLOOR PLANS, REFLECTED CEILING PLANS AND ELEVATIONS FOR EXACT LOCATIONS AND MOUNTING HEIGHTS.

<b>ENGINEERS:</b> <b>GMA</b> <i>Engineers</i> 6402 Odessa Road, Madison, WI 53719 Phone: 608.286.1108 / Fax: 608.286.1109		<b>ARCHITECT:</b> <b>Kahler Slater</b> experience design Copyright © 2012 Kahler Slater, Inc. All rights reserved. 111 West Wisconsin Avenue, Milwaukee, Wisconsin 53203 Telephone 414.272.2000 / Fax 414.272.2001 44 East Milin Street, Suite 700, Madison, Wisconsin 53703 Telephone 608.283.6300 / Fax 608.283.6317		<b>Drawing Title</b> <b>EIGHTH FLOOR PLAN - AREA B - TECHNOLOGY</b>  <b>Approved:</b> Project Director		<b>Project Title</b> <b>WM. S. MIDDLETON MEMORIAL VETERAN'S HOSPITAL CONSOLIDATE ICUs, 8A/8B</b>  <b>Location</b> <b>MADISON, WI</b>  <b>Date</b> December 3, 2012		<b>Project Number</b> <b>607-394</b>  <b>Building Number</b> <b>1</b>  <b>Drawing Number</b> <b>T208B</b> Dwg. 111 of 118		<b>Office of Construction and Facilities Management</b>  	
<b>Revisions:</b>						<b>Checked</b> WS		<b>Drawn</b> RA			
Addendum 5		08/02/2013									
Addendum 1		05/24/2013									
Date											

three inches = one foot  
one and one half inches = one foot  
one inch = one foot  
three quarters inch = one foot  
one half inch = one foot  
three eighths inch = one foot  
one quarter inch = one foot  
one eighth inch = one foot



**1 EIGHTH FLOOR PLAN - AREA D - TECHNOLOGY**  
T208D 1/8" = 1'-0" NORTH

**SHEET NOTES -**

1. EC SHALL REFER TO ARCHITECTURAL FLOOR PLANS, REFLECTED CEILING PLANS AND ELEVATIONS FOR EXACT LOCATIONS AND MOUNTING HEIGHTS.

**KEYED NOTES -**

1. DEVICE DEDICATED FOR WASHER/DISINFECTOR. COORDINATE EXACT EQUIPMENT REQUIREMENTS AND LOCATION WITH VA PROJECT MANAGER.

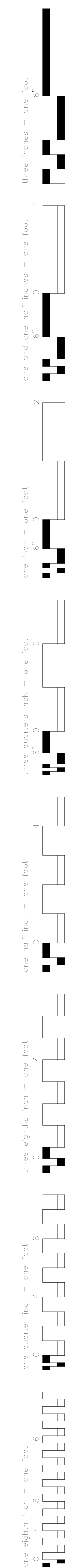
2. EXISTING OPERATING ROOM INTERCOM TERMINAL CABINET LOCATED APPROXIMATELY AT THIS LOCATION ON THE FLOOR BELOW. FIELD VERIFY EXACT LOCATION PRIOR TO COMMENCING WORK.

3. NEW CODE 4 ANNUNCIATOR TO BE LOCATED AT THIS APPROXIMATE LOCATION ON 3RD FLOOR BELOW. LOCATE NEW ANNUNCIATOR ADJACENT TO EXISTING ANNUNCIATOR.

4. EXISTING DUKANE PROCARE 1000 NURSE CALL SYSTEM HEAD-END SERVING 7TH FLOOR.

			<b>ENGINEERS:</b>				<b>ARCHITECT:</b>		<b>Drawing Title</b> EIGHTH FLOOR PLAN - AREA D - TECHNOLOGY		<b>Project Title</b> WM. S. MIDDLETON MEMORIAL VETERAN'S HOSPITAL CONSOLIDATE ICUs, 8A/8B		<b>Project Number</b> 607-394		<div>Office of Construction and Facilities Management</div>	
			 6402 Odana Road, Madison, WI 53719 Phone: 608.288.1108 / Fax: 608.288.1109		 10101 Innovation Drive - Suite 200, Milwaukee, WI 53206 Phone: 414.778.1700 / Fax: 414.778.2360 / rd@ringdu.com		<b>Kahler Slater</b> experience design  Copyright © 2012 Kahler Slater, Inc. All rights reserved. 111 West Wisconsin Avenue, Milwaukee, Wisconsin 53203 Telephone 414.272.2000 Fax 414.272.2001  44 East Millin Street, Suite 700, Madison, Wisconsin 53703 Telephone 608.283.6300 Fax 608.283.6317		<b>Kahler Slater Project No.</b> 211033.00				<b>Building Number</b> 1			
									<b>Approved:</b> Project Director		<b>Location</b> MADISON, WI		<b>Drawing Number</b> T208D			
<div>⚠ Addendum 508/02/2013</div> <div>⚠ Addendum 207/22/2013</div> <div>⚠ Addendum 105/24/2013</div> <div>Revisions:Date</div>											<div>DateDecember 3, 2012</div> <div>CheckedWS</div> <div>DrawnRA</div>		<div>Dwg. 112 of 118</div>			





- 3

one eighth inch = one foot  
0 8 16

one quarter inch = one foot  
0 4 8

three eighths inch = one foot  
0 4 8

one half inch = one foot  
0 4

one inch = one foot  
0 2 4

three quarters inch = one foot  
0 2 4

one inch = one foot  
0 2 4

one and one half inches = one foot  
0 6 12

three inches = one foot  
0 6 12