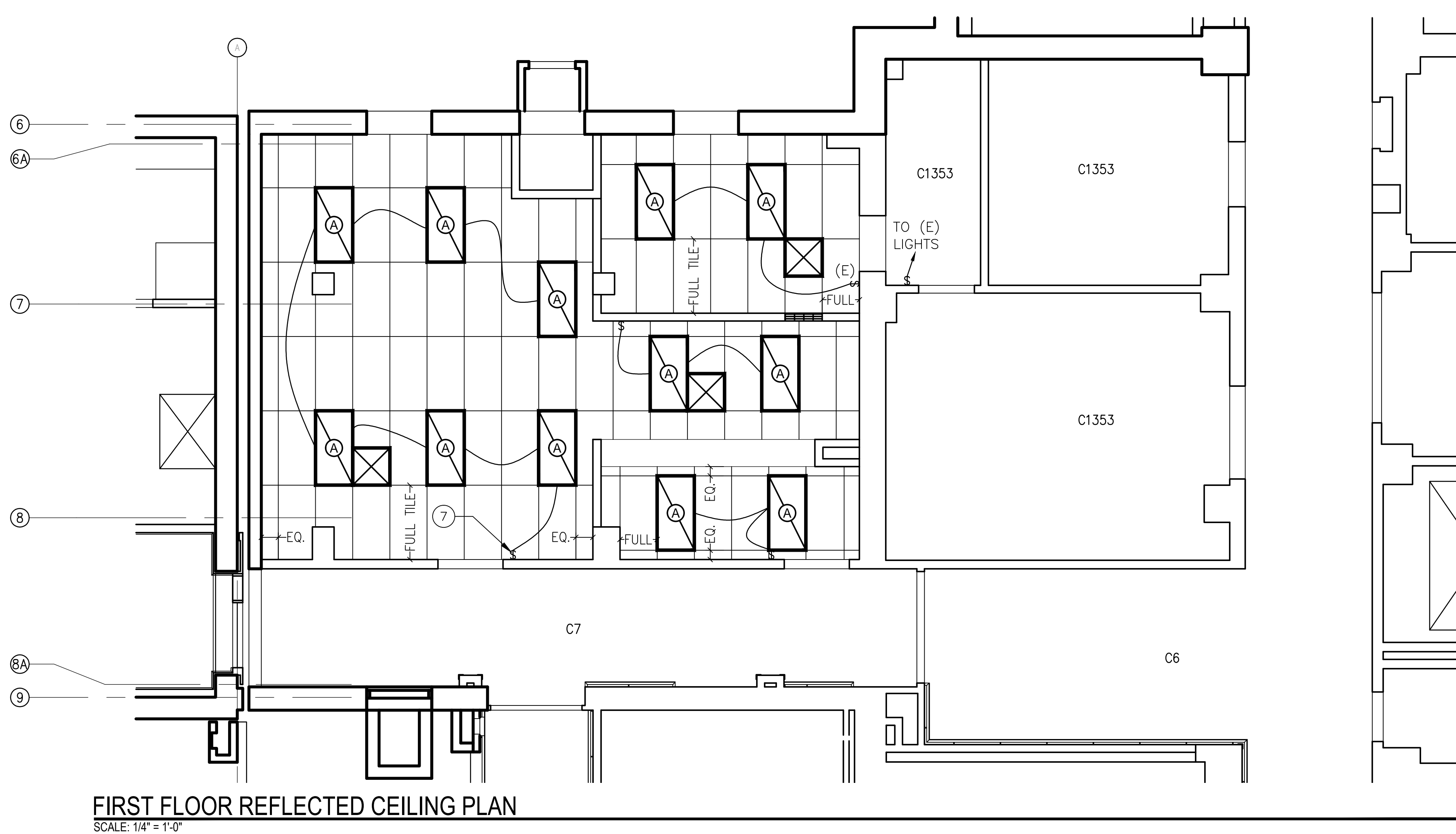
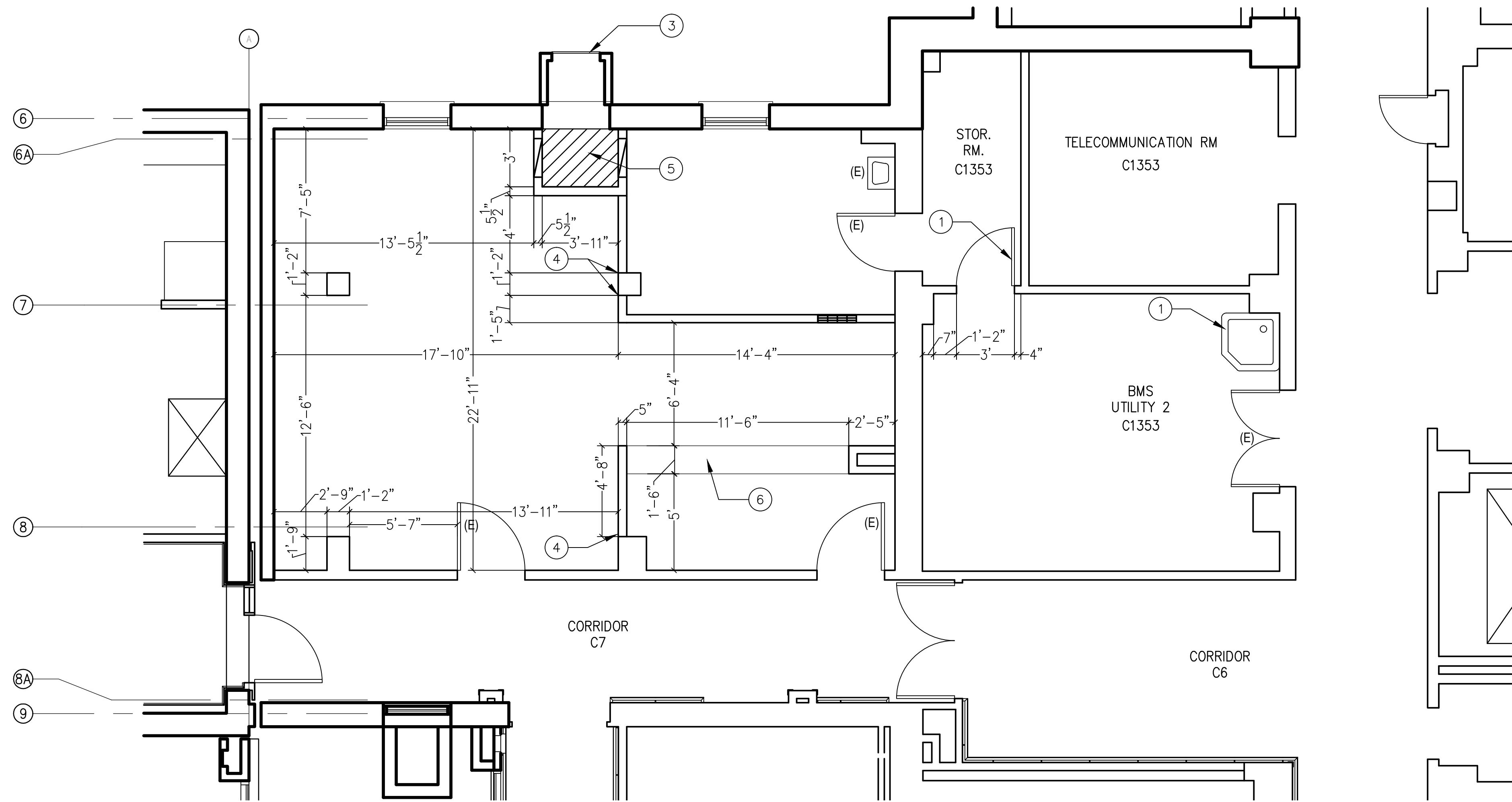


one eighth inch = one foot  
0 4 8 16  
one quarter inch = one foot  
0 4 8  
three eighths inch = one foot  
0 4 8  
one half inch = one foot  
0 4 8  
three quarters inch = one foot  
0 4 8  
one inch = one foot  
0 6 12  
one and one half inches = one foot  
0 6 12  
two inches = one foot  
0 6 12  
three inches = one foot  
0 6 12

F:\Food's files\654-13-371-Mail-Rm-REMODEL.dwg 7-15-13 10:02:17 AM V:\ARELCHAF



FIRST FLOOR REFLECTED CEILING PLAN  
SCALE: 1/4" = 1'-0"



FIRST FLOOR PLAN  
SCALE: 1/4" = 1'-0"

#### GENERAL NOTES:

- CONTRACTOR IS RESPONSIBLE FOR SECURING ALL PERMITS REQUIRED BY LOCAL AUTHORITIES HAVING JURISDICTION.
- WORK SHALL COMPLY WITH APPLICABLE CODES, AMENDMENTS, RULES, REGULATIONS, ORDINANCES, LAWS, ORDERS, APPROVALS, ETC., THAT ARE REQUIRED BY AUTHORITIES HAVING JURISDICTION. IN THE EVENT OF CONFLICT, THE MOST STRINGENT REQUIREMENTS SHALL GOVERN.
- CONTRACTOR SHALL HAVE VISITED THE SITE OF WORK AND BECOME FAMILIAR WITH EXISTING CONDITIONS PRIOR TO SUBMITTING A PROPOSAL. CLAIMS FOR ADDITIONAL COMPENSATION DUE TO UNFAMILIARITY WITH EXISTING CONDITIONS WILL NOT BE CONSIDERED. VERIFY FIELD CONDITIONS PRIOR TO COMMENCEMENT OF EACH PORTION OF THE WORK.
- CONTRACTOR SHALL COORDINATE SITE ACCESS, DELIVERIES, PARKING, SECURITY, MATERIAL STORAGE, AND DEBRIS REMOVAL WITH V.A. FACILITIES. V.A. BUILDING POLICIES SHALL BE ADHERED TO AT ALL TIMES.
- PROVIDE PROTECTION FOR EXISTING WORK AND FINISHES INCLUDING ELEVATORS, LOBBIES AND CORRIDORS NOT OTHERWISE SCHEDULED TO BE MODIFIED AS PART OF THIS PROJECT. TAKE SPECIAL CARE TO PROTECT ALL FINISHES THAT ARE TO REMAIN.
- IN THE EVENT OF CONFLICT BETWEEN INFORMATION SHOWN ON DRAWINGS AND INFORMATION SHOWN IN THE SPECIFICATIONS, THE SPECIFICATIONS SHALL GOVERN. DETAIL DRAWINGS TAKE PRECEDENCE OVER DRAWINGS OF LARGER SCOPE.
- VERIFY THAT NO CONFLICTS EXIST IN LOCATIONS OF PROPOSED WALLS. COORDINATE ALL MECHANICAL, COMMUNICATIONS, ELECTRICAL, PLUMBING AND SPRINKLER EQUIPMENT TO BE REMOVED, RELOCATED OR INSTALLED WITH EACH OTHER AND OTHER NEW WORK. VERIFY THAT ALL REQUIRED CLEARANCES FOR INSTALLATION AND MAINTENANCE OF EQUIPMENT ARE PROVIDED.
- DO NOT SCALE DRAWINGS; USE WRITTEN DIMENSIONS. VERIFY DIMENSIONS WITH FIELD CONDITIONS. IF DISCREPANCIES ARE DISCOVERED BETWEEN FIELD CONDITIONS AND DRAWINGS OR BETWEEN DRAWINGS, CONTACT V.A. FACILITIES FOR RESOLUTION BEFORE PROCEEDING.
- HORIZONTAL DIMENSIONS INDICATED ARE TO FINISHED FACE OF CONSTRUCTION, UNLESS OTHERWISE INDICATED.
- ALL CEILING GRID SHALL BE INSTALLED USING MANUFACTURER'S SEISMIC INSTALLATION PROCEDURES & ACCESSORIES.

#### SHEET NOTES:

- RELOCATED FLOOR SINK. RELOCATE AND RECONNECT ASSOCIATED PLUMBING AS NEEDED TO ACCOMMODATE NEW LOCATION OF FIXTURE.
- NEW 3'x6'-8" DOOR AND FRAMES.
- MODIFY EXISTING MECHANICAL DOGHOUSE CONSTRUCTION AS NEEDED TO ACCOMMODATE NEW 30" x 60" METAL ACCESS PANEL.
- NEW WALL TO BE FLUSH WITH EXISTING FACE OF COLUMN FINISH.
- NEW 18 GA. METAL FRAMED PEDESTAL TO ALLOW FOR INSTALLATION OF NEW HVAC UNIT FLUSH WITH LEVEL OF EXISTING CONCRETE SILL (FRAMING CONTRACTOR TO VERIFY EXACT REQUIRED PEDESTAL HEIGHT IN THE FIELD AND COORDINATE ALL NECESSARY CLEARANCES WITH MECHANICAL UNIT INSTALLATION).
- RELOCATED MAIL SLOT CABINET. VERIFY EXACT SIZE OF ROUGH OPENING AND INSTALL ALL BLOCKING AND WALL REINFORCING AS REQUIRED FOR A COMPLETE AND SAFE FINISHED CABINET INSTALLATION.
- LIGHTING FIXTURES WITH MORE THAN TWO LAMPS SHALL HAVE TWO OUTER LAMPS CONTROLLED WITH ONE SWITCH AND INNER LAMP(S) CONTROLLED BY A SECOND SWITCH.

#### LEGEND

- RETURN AIR REGISTER.
- OPEN REGISTER.
- SUPPLY AIR REGISTER.
- TYPE "A": 3 LAMP 2X4 LAY-IN WITH K20 ACRYLIC LENS AND ALUMINUM REGRESSED LENS FRAME, SINGLE 3 LAMP BALLAST.
- NEW WALL CONSTRUCTION.
- EXISTING WALL TO REMAIN.
- 2'x4' ACOUSTICAL TILE SUSPENDED CEILING GRID SYSTEM.
- (E) EXISTING.
- S LIGHT SWITCH.

#### CONSULTANTS:

#### ARCHITECT/ENGINEERS:

Drawing Title  
FIRST FLOOR PLAN  
FIRST FLOOR REF. CLG. PLAN

Approved Project Director  
-  
VAPAHCS PLANNING AND ENGINEERING

Project Title  
MAIL ROOM REMODEL

Location  
- RENO NV

Date  
07/15/2013

Checked  
MQ

Drawn  
FE

Project Number  
654-13-371

Building Number  
-

Drawing Number  
A001

Dwg. 3 of 5

Office of  
Construction  
and Facilities  
Management

Department of  
Veterans Affairs