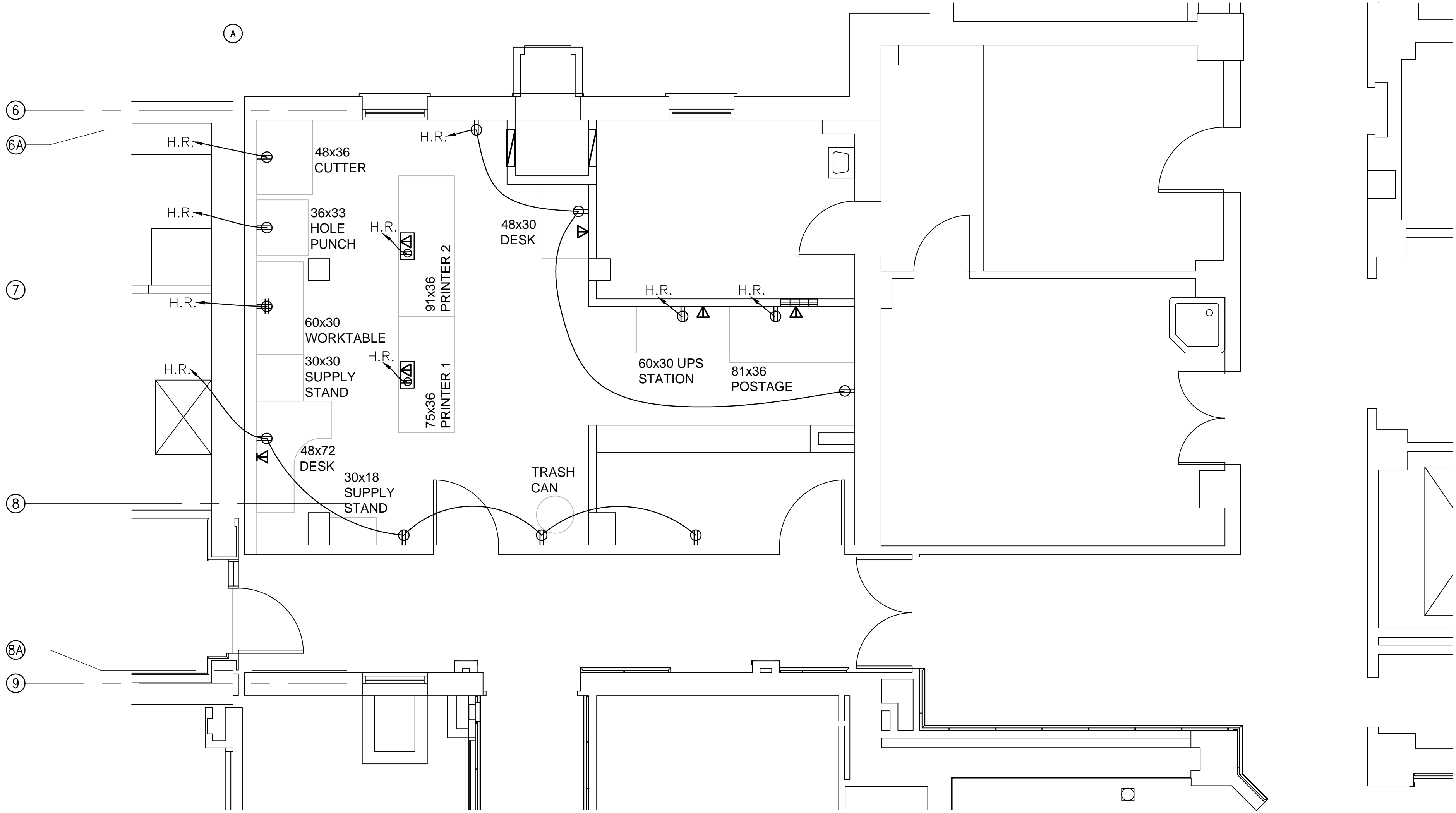


one eighth inch = one foot  
0 4 8 16  
one quarter inch = one foot  
0 4 8  
one half inch = one foot  
0 4  
three eighths inch = one foot  
0 4 8 12 16  
three quarters inch = one foot  
0 4 8  
one inch = one foot  
0 6  
one and one half inches = one foot  
0 6 12  
three inches = one foot  
0 6 12 18

F:\Fod's Files\654-13-371 MailRoom\654-13-371-MAIL-RM-REMODEL.dwg 7-15-13 10:03:57 AM VHARELCHAF



ELECTRICAL FLOOR PLAN  
SCALE: 1/4" = 1'-0"

GENERAL NOTES:

1. EACH BRANCH CIRCUIT HOMERUN SHALL HAVE NO MORE THAN THREE CIRCUITS. EACH BRANCH CIRCUIT HOMERUN SHALL HAVE A SEPARATE GREEN INSULATED EQUIPMENT GROUNDING CUDUCTOR.
2. MULTI-GANG BACKBOXES FOR DIFFERENT VOLTAGES AND TYPES OF EMERGENCY AND NORMAL BRANCH WIRING DEVICES SHALL HAVE DIVIDERS BETWEEN DEVICES.

SHEET NOTES:

LEGEND

- 4 DATA PORT @ 18" A.F.F. RUN TO NEAREST DATA CLOSET IN BUILDING 1.
- DUPLEX RECEPTACLE @ 18" A.F.F.
- HOMERUN TO ELECTRICAL CLOSET.
- FLOOR BOX WITH DUPLEX RECEPTACLE AND 2 DATA PORTS.
- DOUBLE DUPLEX RECEPTACLE @ 18" A.F.F.

CONSULTANTS:

ARCHITECT/ENGINEERS:

Drawing Title  
ELECTRICAL FLOOR PLAN  
-  
-

Approved Project Director  
-  
VAPAHCS PLANNING AND ENGINEERING

Project Title  
MAIL ROOM REMODEL  
-  
-

Location  
RENO NV  
Date  
07/15/2013  
Checked  
MQ  
Drawn  
FE

Project Number  
654-13-371  
Building Number  
-

Drawing Number  
E001  
Dwg 5 of 5

Office of  
Construction  
and Facilities  
Management

