

DIMENSION PLAN GENERAL NOTES

- INTERIOR DOOR FRAMES TO BE FRAMED 4" FROM ADJACENT WALL, UNLESS NOTED OTHERWISE.
- MINIMUM DIMENSION ON PULL SIDE OF DOOR FRAME TO ADJACENT WALL SURFACE TO BE 18".
- MINIMUM DIMENSION ON PUSH SIDE OF DOOR FRAME TO ADJACENT WALL SURFACE TO BE 12".
- NEW INFILL WALLS TO BE FLUSH WITH FACE OF ADJACENT EXISTING WALLS.

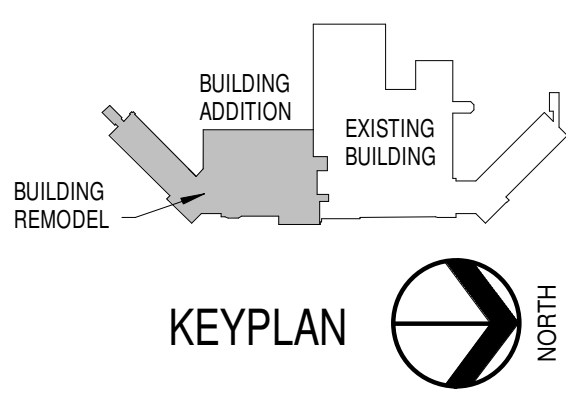
DIMENSION PLAN KEYNOTES

- FACE OF NEW WALL TO LINE UP WITH FACE OF EXISTING.
- INSIDE FACE OF WALL TO BE FLUSH WITH ROUGH OPENING.
- CENTER LINE OF HEADWALL TO BE CENTERED ON BED AND PATIENT LIFT.
-

NOTE: NOT ALL KEYNOTES MAY BE USED ON EACH PLAN



1F SECOND LEVEL DIMENSION PLAN
1/8" = 1'-0"



**FULLY SPRINKLERED
100% CONSTRUCTION DOCUMENTS**

<p>MARK</p> <p>REVISION DESCRIPTION</p> <p>DATE</p>	<p>CONSULTANTS:</p> <p>rpa design</p> <p>RPA Design Suite 500 Charlotte, NC 28210 Phone 704-887-3500 Fax 704-887-3507</p>	<p>ARCHITECTS/ ENGINEERS:</p> <p>TSP, Inc. 1112 N. West Ave. Sioux Falls, SD 57104 phone: (605) 336-1160 fax: (605) 336-7926 www.teamtsp.com</p> <p>TSP</p> <p>To Solve. To Excel. Together.</p>	<p>Drawing Title 2ND LEVEL DIMENSION PLAN</p> <p>Approved: Project Director</p>	<p>Project Title Sioux Falls VA Health Care System Acute Inpatient Medical Unit Addition and Renovation</p> <p>Location VA Medical Center 2801 W. 22nd Street, PO Box 5046 Sioux Falls, SD 57117-5046</p> <p>Date 08/06/12</p> <p>Checked RAH</p> <p>Drawn EOO</p>	<p>Project Number 438-369</p> <p>Building Number 5</p> <p>Drawing Number 5-AE122 Dwg. 24 of 123</p>	<p>Office of Construction and Facilities Management</p> <p>Department of Veterans Affairs</p>
---	---	--	--	---	---	---