

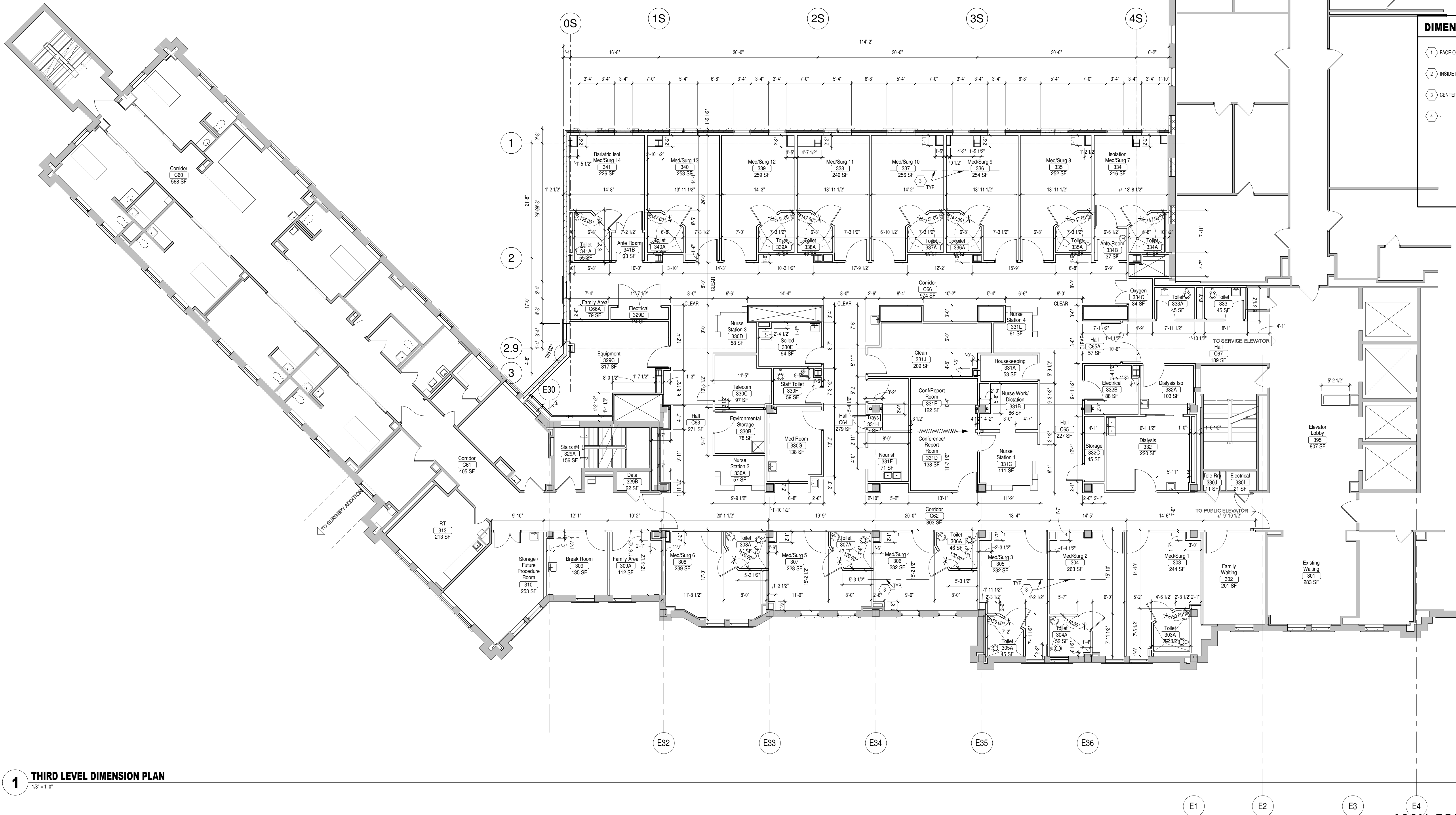
# **DIMENSION PLAN GENERAL NOTES**

- INTERIOR DOOR FRAMES TO BE FRAMED 4" FROM ADJACENT WALL, UNLESS NOTED OTHERWISE.
- MINIMUM DIMENSION ON PULL SIDE OF DOOR FRAME TO ADJACENT WALL SURFACE TO BE 15".
- MINIMUM DIMENSION ON PUSH SIDE OF DOOR FRAME TO ADJACENT WALL SURFACE TO BE 12".
- NEW INFILL WALLS TO BE FLUSH WITH FACE OF ADJACENT EXISTING WALLS.

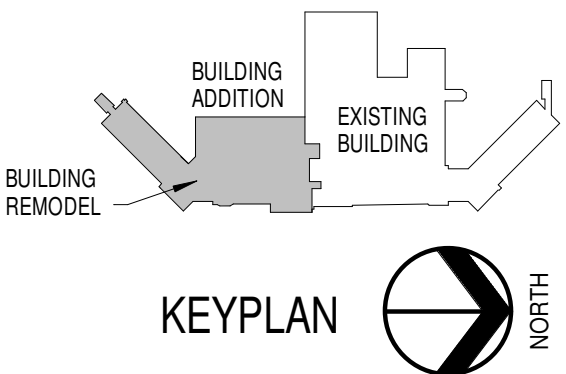
# **DIMENSION PLAN KEYNOTES**

- FACE OF NEW WALL TO LINE UP WITH FACE OF EXISTING.
- INSIDE FACE OF WALL TO BE FLUSH WITH ROUGH OPENING.
- CENTER LINE OF HEADWALL TO BE CENTERED ON BED AND PATIENT LIFT.
- 

NOTE: NOT ALL KEYNOTES MAY BE USED ON EACH PLAN



**1 THIRD LEVEL DIMENSION PLAN**  
1/8" = 1'-0"



**FULLY SPRINKLERED  
100% CONSTRUCTION DOCUMENTS**

## **CONSULTANTS:**



RPA Design  
Suite 500  
Charlotte, NC 28210  
Phone 704-887-3500  
Fax 704-887-3507



## **ARCHITECTS/ ENGINEERS:**

TSP, Inc.  
1112 N. West Ave.  
Sioux Falls, SD 57104  
phone: (605) 336-1160  
fax: (605) 336-7926  
www.teamtsp.com



Drawing Title  
**3RD LEVEL DIMENSION PLAN**

Approved: Project Director

Project Title  
**Sioux Falls VA Health Care System  
Acute Inpatient Medical Unit Addition  
and Renovation**

Location  
VA Medical Center  
2501 W. 22nd Street, PO Box 5046  
Sioux Falls, SD 57117-5046

Date  
08/06/12

Checked  
RAH

Drawn  
EOO

Project Number  
438-369

Building Number  
**5**

Drawing Number

**5-AE123**  
Dwg. 25 of 123

**Office of  
Construction  
and Facilities  
Management**

