

CEILING PLAN GENERAL NOTES

- A. ALL SURFACES DAMAGED DURING DEMOLITION SHALL BE REPAIRED FOR APPLICATION OF NEW FINISHES OR PATCHED TO MATCH EXISTING.
- B. CONTRACTOR SHALL FIELD VERIFY ALL EXISTING CONDITIONS AND DIMENSIONS WHICH ARE TO MATCH EXISTING CONSTRUCTION. CONTACT A/E WITH DISCREPANCIES.
- C. ALL CEILINGS TO BE 8'-0" AFF. UNLESS NOTED OTHERWISE.
- D. GENERAL CONTRACTOR TO COORDINATE ALL CEILING MOUNTED EQUIPMENT SUPPORT REQUIREMENTS, LOCATIONS, DIMENSIONS, ETC. WITH EQUIPMENT SUPPLIER AND OWNER. PRIOR TO INSTALLATION.
- E. ALL CEILING MOUNTED ITEMS SUCH AS LIGHT FIXTURES, GRILLES, DIFFUSERS, SPEAKERS, EXIT LIGHTS ETC. SHALL BE LOCATED IN THE CENTER OF ACT/AGE PANELS, GYP BD SOFFITS AND/OR PLASTER SOFFIT BAYS. UNLESS NOTED OTHERWISE, COORDINATE WITH MECHANICAL AND ELECTRICAL DRAWINGS.
- F. FINISHED GYP BD SOFFITS SHALL EXTEND 1" BEYOND FACE AND EXPOSED ENDS OF WALL CABINETS, FULL-HEIGHT CABINETS ETC. UNLESS NOTED OTHERWISE, COORDINATE CABINET DIMENSIONS WITH SUPPLIER. GYP BD FASCIA/SOFFIT DETAILS ARE REFERENCED FROM THE REFLECTED CEILING PLAN.
- G. NOTE: EXPANSION JOINT LOCATIONS WHERE EXISTING BUILDING MEETS NEW.

CEILING PLAN KEYNOTES

- 1 PATIENT LIFT TRACK SYSTEM. REFERENCE 1A/AE122 AND 8A/AE504 FOR ADDITIONAL INFORMATION.
- 2 EXPOSED STRUCTURE
- 3 GYPSUM BOARD BULKHEAD. REFERENCE 8D/AE504.
- 4 GYPSUM BOARD SOFFIT
- 5 LIGHT FIXTURE. TYPICAL
- 6 EIFS SOFFIT
- 7 PRECAST COLUMN COVER
- 8 2'x2' ACCESS PANEL. PAINT TO MATCH ADJACENT SURFACE
- 9 GYPSUM BOARD CEILING
- 10 MECH. CHASE
- 11 PRIVACY CURTAIN. REF. SPECIFICATIONS
- 12 LAY-IN ACOUSTICAL TILE - TYPICAL
- 13 EXISTING
- 14 NEW CEILING GRID. INTEGRATE WITH EXISTING.
- 15 CONTROL JOINT
- 16 PROJECTOR - BY OWNER
- 17 PROJECTION SCREEN

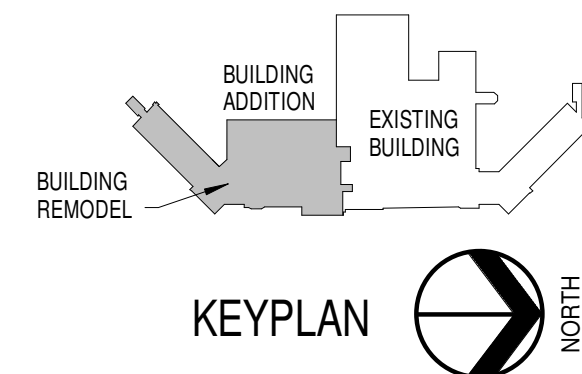
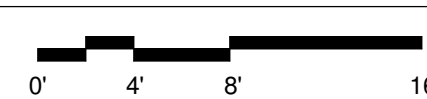
NOTE: NOT ALL KEYNOTES MAY BE USED ON EACH PLAN

REFLECTED CEILING PLAN LEGEND

2'x4" Acoustical Tile	Access Panel	Lay-in Light
2'x2" Acoustical Tile	Attic Access Hatch	Indirect Lay-in Light
Gypsum Board Ceiling	Supply	Under Cabinet Light
Recessed Downlight	Return	Recessed Heat Lamp
Ceiling Mounted Light	Exhaust Air Grill	Crown Molding
Pendant Light	Linear Supply	Exposed to Structure
Wall Mounted Light	Ceiling Elevation Tag	EXP
Exit Sign	Spot Elevation	Sound System Speaker

1F FIRST LEVEL CEILING PLAN

1/8" = 1'-0"



FULLY SPRINKLERED  
100% CONSTRUCTION DOCUMENTS

CONSULTANTS:



ARCHITECTS/ ENGINEERS:

TSP, Inc.  
1112 N. West Ave.  
Sioux Falls, SD 57104  
phone: (605) 336-1160  
fax: (605) 336-7926  
www.teamtsp.com



Drawing Title  
1ST LEVEL CEILING PLAN

Approved: Project Director

Project Title  
Sioux Falls VA Health Care System  
Acute Inpatient Medical Unit Addition  
and Renovation

Location  
VA Medical Center  
2501 W. 22nd Street, PO Box 5046  
Sioux Falls, SD 57117-5046

Date  
08/06/12

Checked  
RAH

Drawn  
EOO

Project Number  
438-369

Building Number  
5

Drawing Number  
5-AE131

Dwg. 26 of 123

Office of  
Construction  
and Facilities  
Management

