

REFLECTED CEILING PLAN LEGEND			
2x4' Acoustical Tile		Access Panel	
2x2' Acoustical Tile		Attic Access Hatch	
Gypsum Board Ceiling		Supply	
Recessed Downlight		Return	
Ceiling Mounted Light		Exhaust Air Grille	
Pendant Light		Linear Supply	
Wall Mounted Light		Ceiling Elevation Tag	
Exit Sign		Spot Elevation	
Lay-in Light		Under Cabinet Light	
Indirect Lay-in Light		Recessed Heat Lamp	
Crown Molding		Exposed to Structure	
EXP		Sound System Speaker	

1F THIRD LEVEL CEILING PLAN
1/8" = 1'-0"

- CEILING PLAN GENERAL NOTES**

A. ALL SURFACES DAMAGED DURING DEMOLITION SHALL BE REPAIRED FOR APPLICATION OF NEW FINISHES OR PATCHED TO MATCH EXISTING.

B. CONTRACTOR SHALL FIELD VERIFY ALL EXISTING CONDITIONS AND DIMENSIONS WHICH ARE TO MATCH EXISTING CONSTRUCTION. CONTACT A/E WITH DISCREPANCIES.

C. ALL CEILINGS TO BE 9'-0" AFF. UNLESS NOTED OTHERWISE.

D. GENERAL CONTRACTOR TO COORDINATE ALL CEILING MOUNTED EQUIPMENT SUPPORT REQUIREMENTS, LOCATIONS, DIMENSIONS, ETC. WITH EQUIPMENT SUPPLIER AND OWNER. PRIOR TO INSTALLATION.

E. ALL CEILING MOUNTED ITEMS SUCH AS LIGHT FIXTURES, GRILLES, DIFFUSERS, SPEAKERS, EXIT LIGHTS ETC. SHALL BE LOCATED IN THE CENTER OF ACT/ACB PANELS. GYP BD SOFFITS AND/OR PLASTER SOFFIT BAYS, UNLESS NOTED OTHERWISE. COORDINATE WITH MECHANICAL AND ELECTRICAL DRAWINGS.

F. FINISHED GYP BD SOFFITS SHALL EXTEND 1" BEYOND FACE AND EXPOSED ENDS OF WALL CABINETS, FULL HEIGHT CABINETS ETC. UNLESS NOTED OTHERWISE. COORDINATE CABINET DIMENSIONS WITH SUPPLIER. GYP BD PLASTER SOFFIT DETAILS ARE REFERENCED FROM THE REFLECTED CEILING PLAN.

G. NOTE: EXPANSION JOINT LOCATIONS WHERE EXISTING BUILDING MEETS NEW.
- CEILING PLAN KEYNOTES**

1 PATIENT LIFT TRACK SYSTEM. REFERENCE 1A/AE122 AND 8A/AE504 FOR ADDITIONAL INFORMATION.

2 EXPOSED STRUCTURE

3 GYPSUM BOARD BULKHEAD. REFERENCE 8D/AE504.

4 GYPSUM BOARD SOFFIT

5 LIGHT FIXTURE. TYPICAL

6 EIFS SOFFIT

7 PRECAST COLUMN COVER

8 2'x2' ACCESS PANEL. PAINT TO MATCH ADJACENT SURFACE

9 GYPSUM BOARD CEILING

10 MECH. CHASE

11 PRIVACY CURTAIN. REF. SPECIFICATIONS

12 LAY-IN ACOUSTICAL TILE - TYPICAL

13 EXISTING

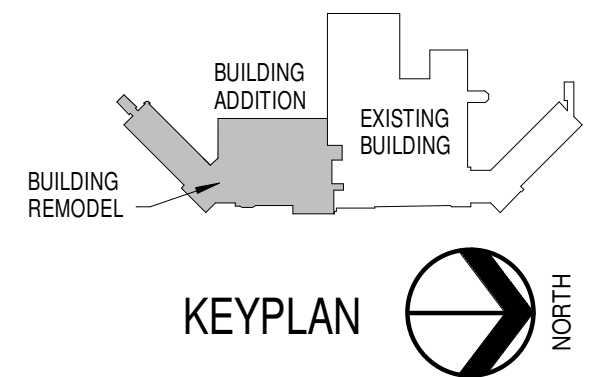
14 NEW CEILING GRID. INTEGRATE WITH EXISTING.

15 CONTROL JOINT

16 PROJECTOR - BY OWNER

17 PROJECTION SCREEN

NOTE: NOT ALL KEYNOTES MAY BE USED ON EACH PLAN



0' 4' 8' 16'

**FULLY SPRINKLERED
100% CONSTRUCTION DOCUMENTS**

CONSULTANTS: RPA Design Suite 300 Charlotte, NC 28210 Phone 704-887-3500 Fax 704-887-3507		ARCHITECTS/ ENGINEERS: TSP, Inc. 1112 N. West Ave. Sioux Falls, SD 57104 phone: (605) 336-1160 fax: (605) 336-7926 www.teamtsp.com To Solve. To Excel. Together.		Drawing Title 3RD LEVEL CEILING PLAN	Project Title Sioux Falls VA Health Care System Acute Inpatient Medical Unit Addition and Renovation	Project Number 438-369 Building Number 5 Drawing Number 5-AE133 Dwg. 28 of 123	Office of Construction and Facilities Management
MARK REVISION DESCRIPTION DATE				Approved: Project Director	Location VA Medical Center 2801 W. 22nd Street, PO Box 5046 Sioux Falls, SD 57117-5046	Date 08/06/12	Checked RAH Drawn EOO