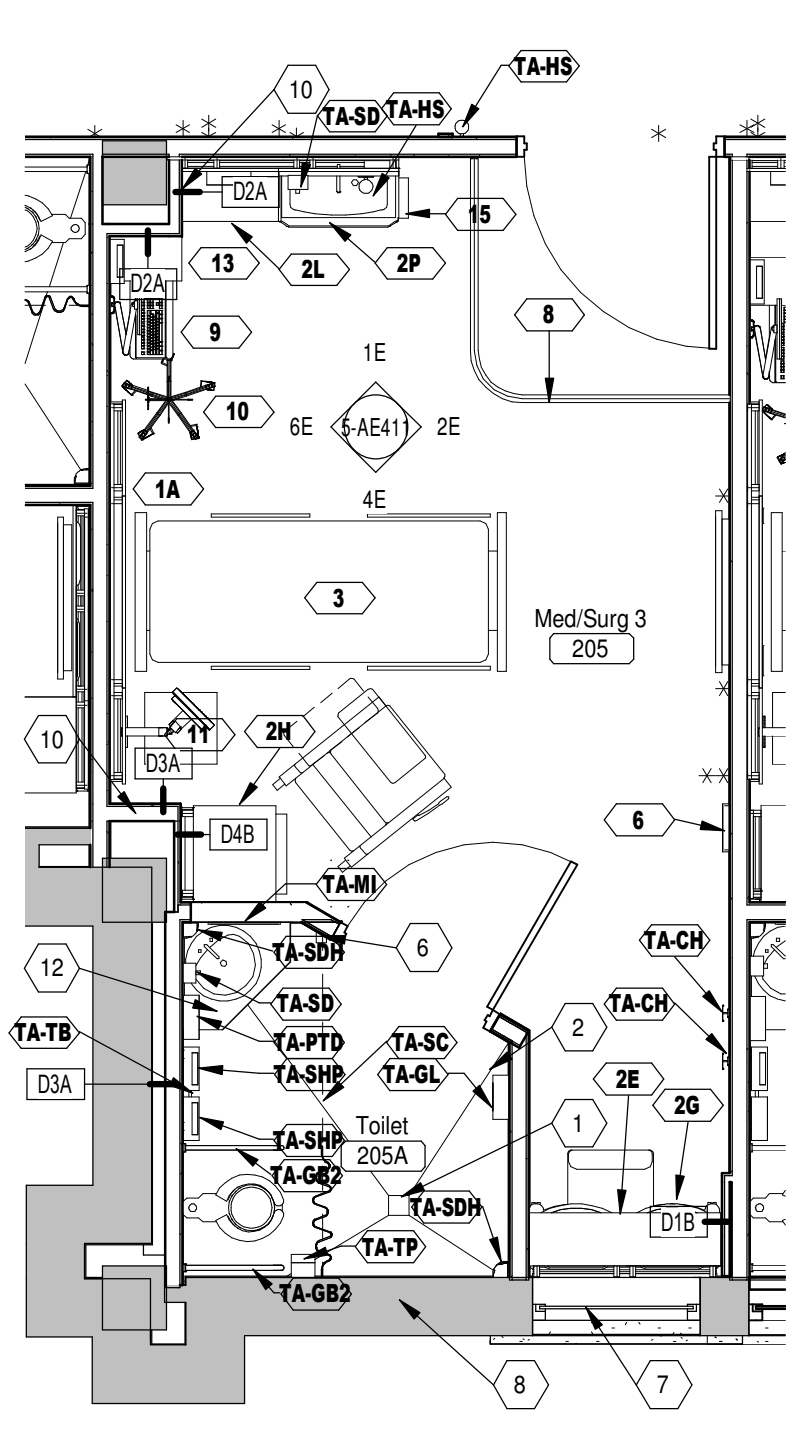
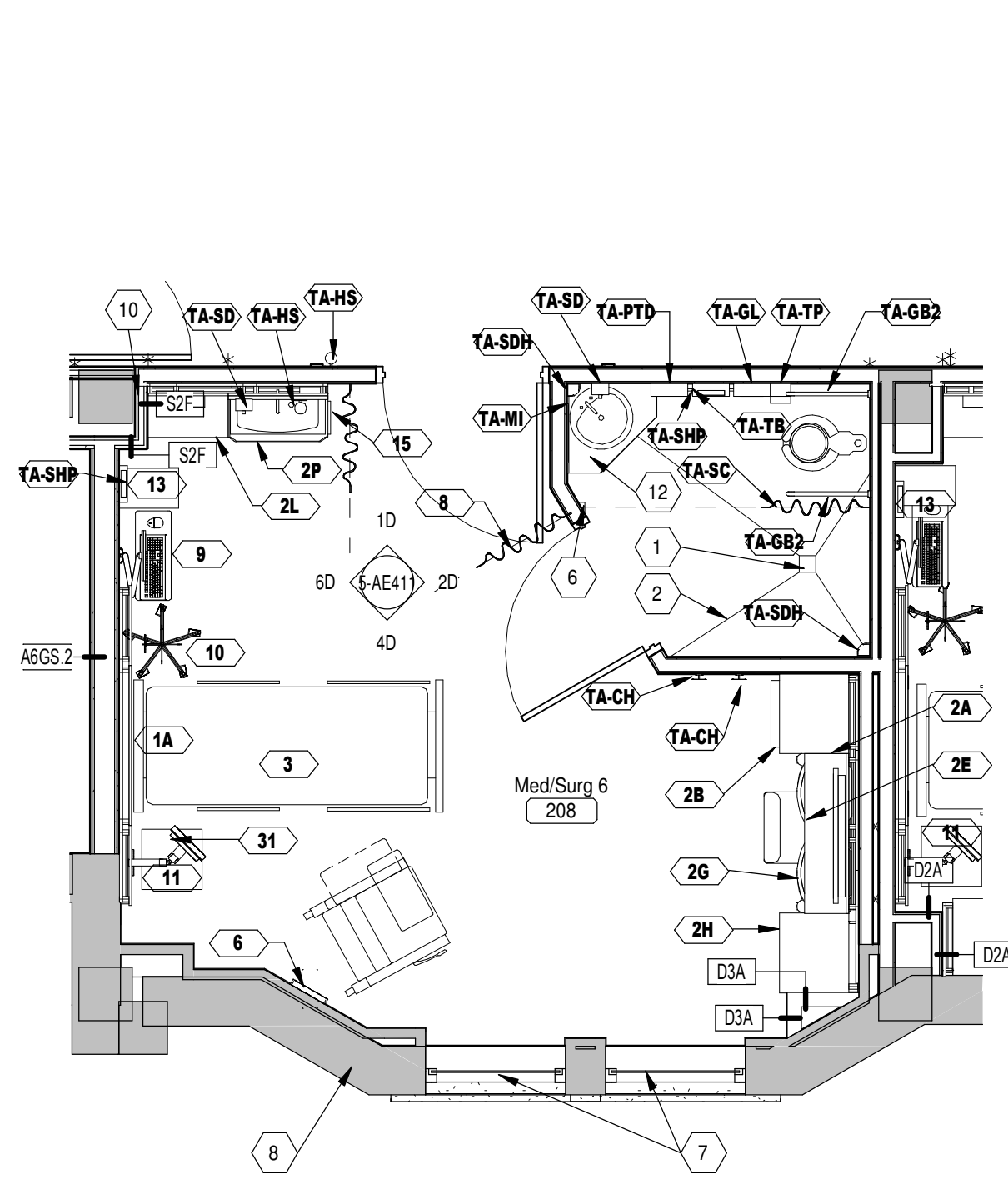


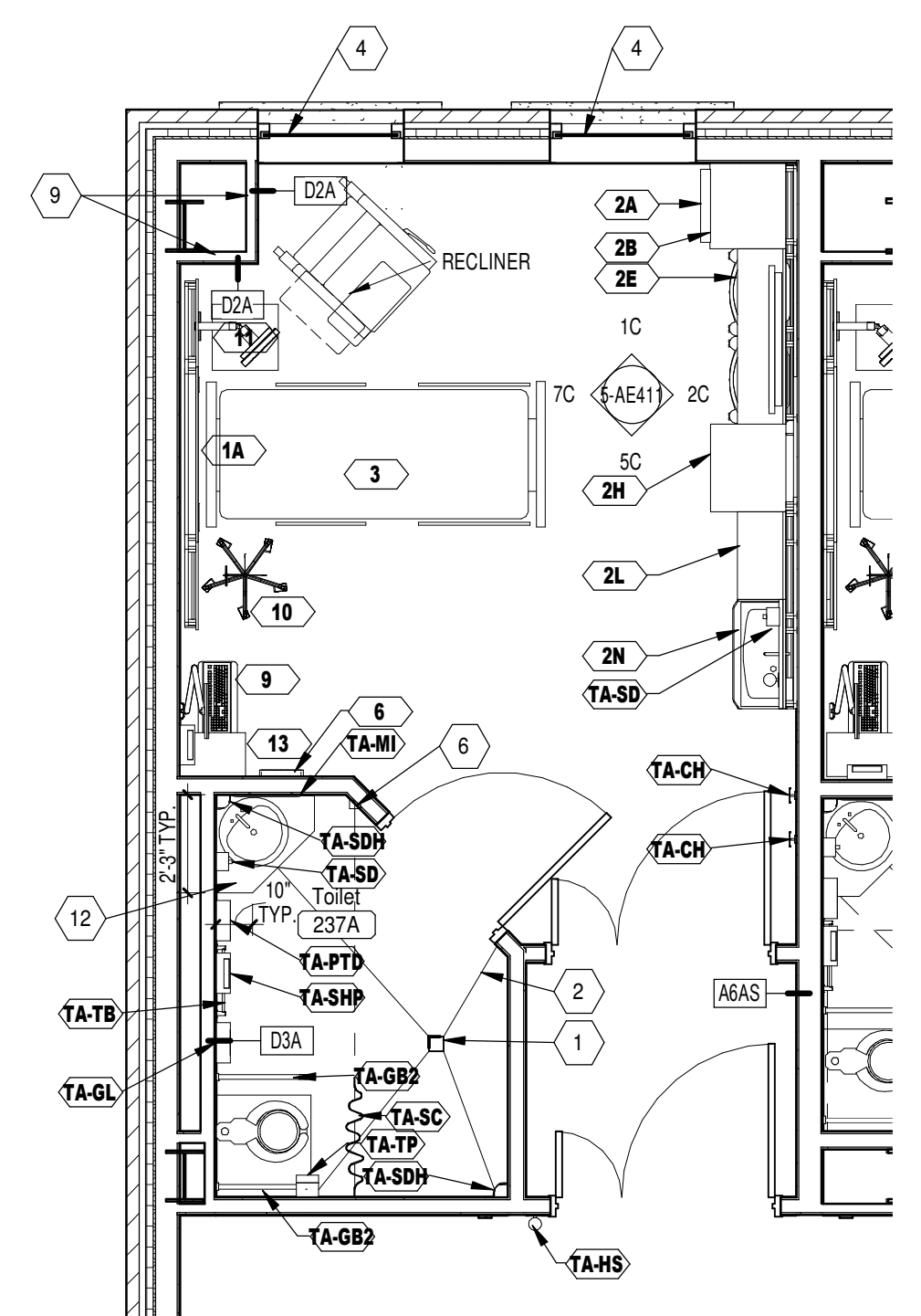
1B ENLARGED - PATIENT ROOM TYPE 1
1/4" = 1'-0"



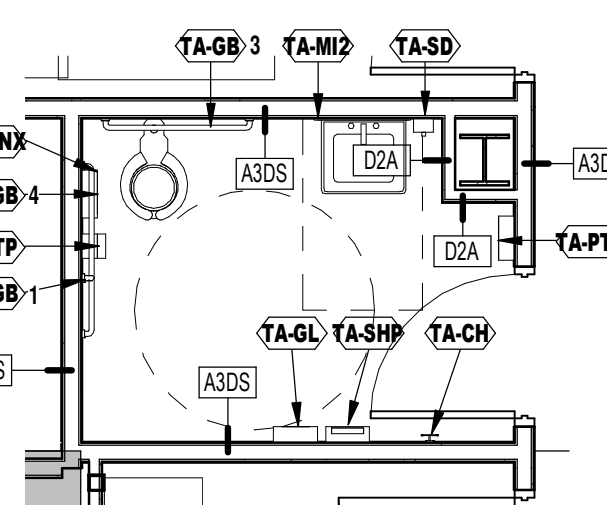
2B ENLARGED - PATIENT ROOM TYPE 2
1/4" = 1'-0"



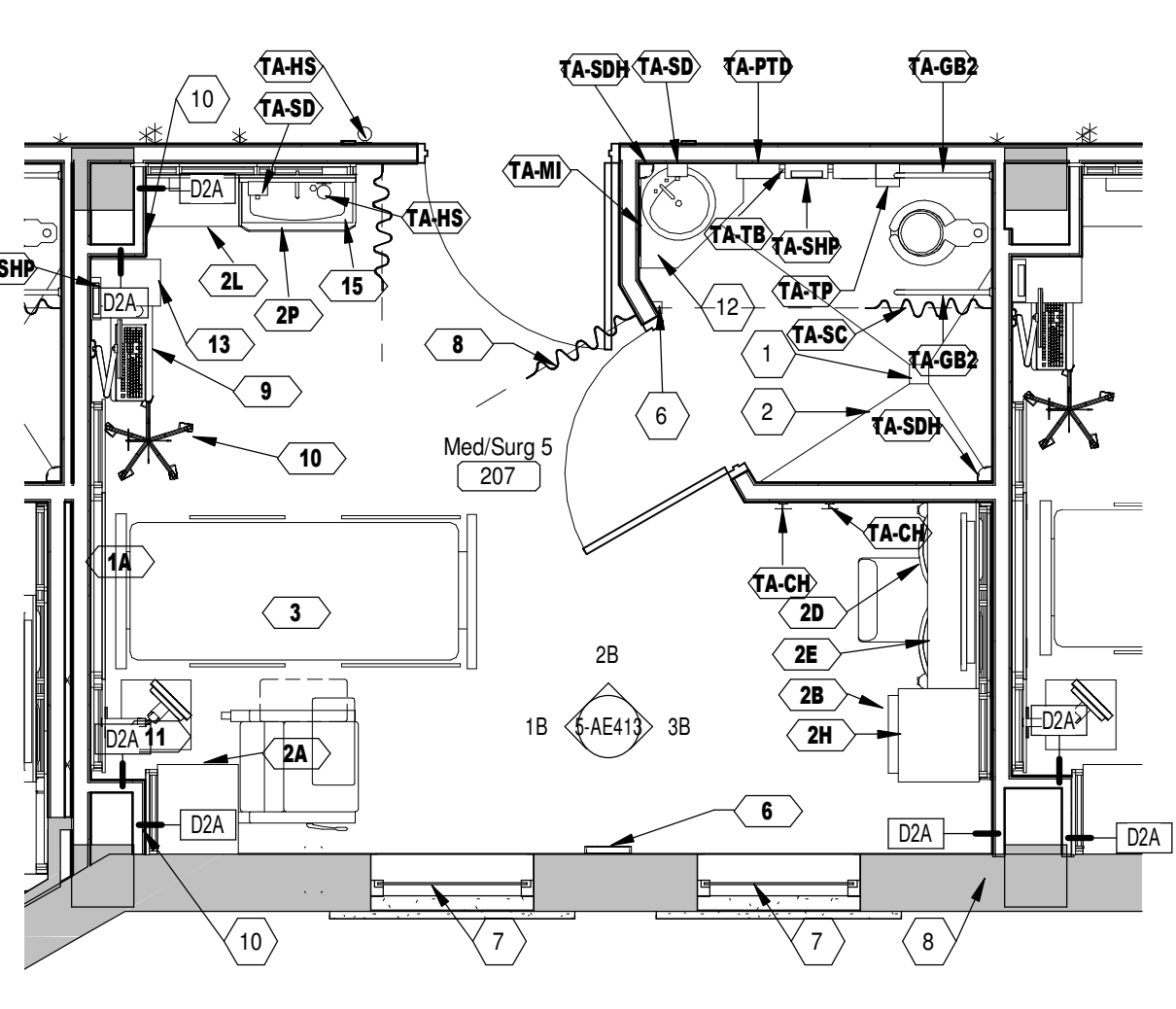
4B ENLARGED - PATIENT ROOM TYPE 3
1/4" = 1'-0"



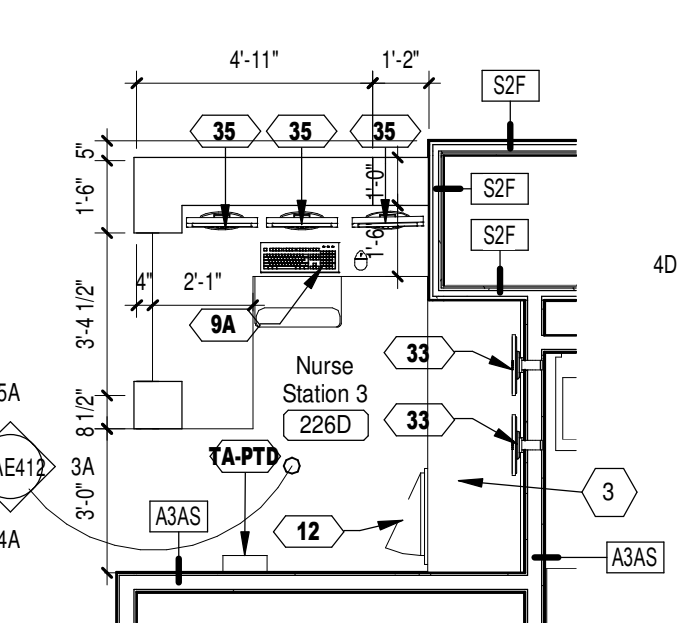
1E ENLARGED - PATIENT ROOM TYPE 5 (BARIATRIC)
1/4" = 1'-0"



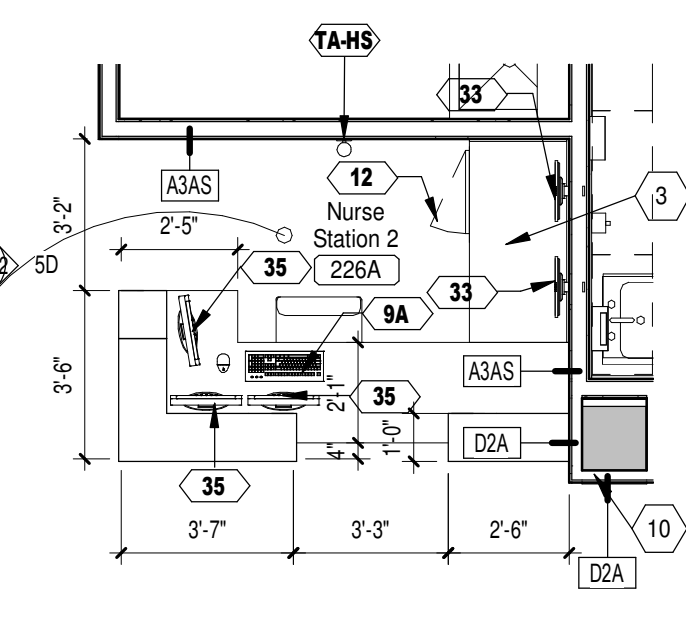
2C ENLARGED - STAFF TOILET
1/4" = 1'-0"



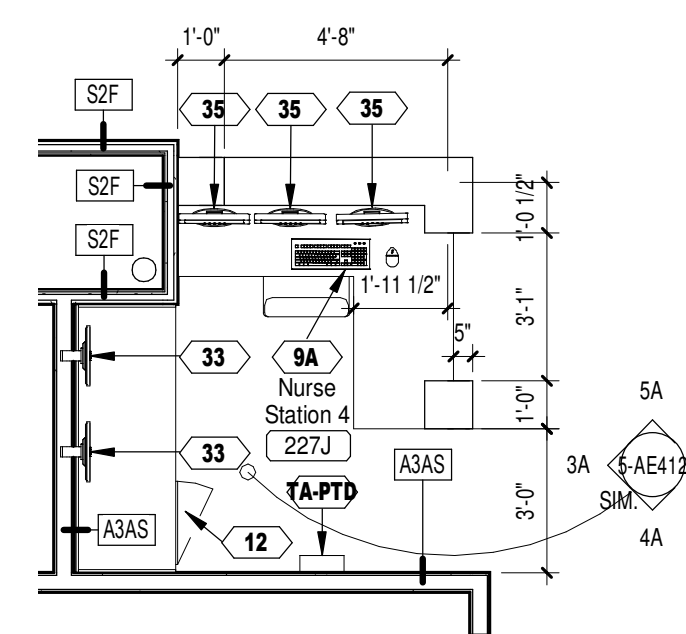
5D ENLARGED - HOSPITALIST SECRETARY
1/4" = 1'-0"



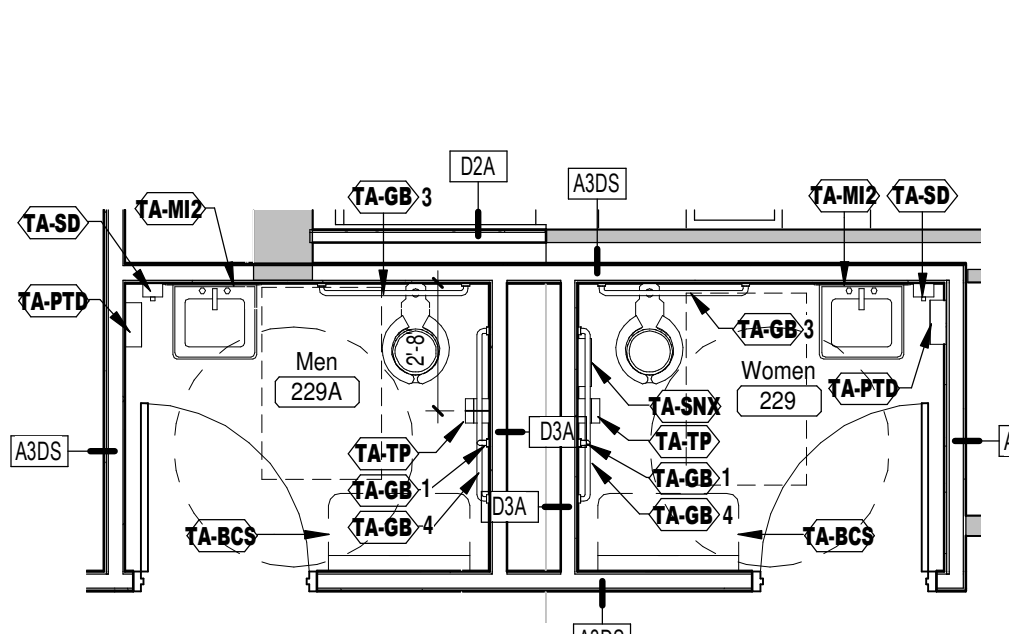
1F ENLARGED - NURSE STN 3
1/4" = 1'-0"



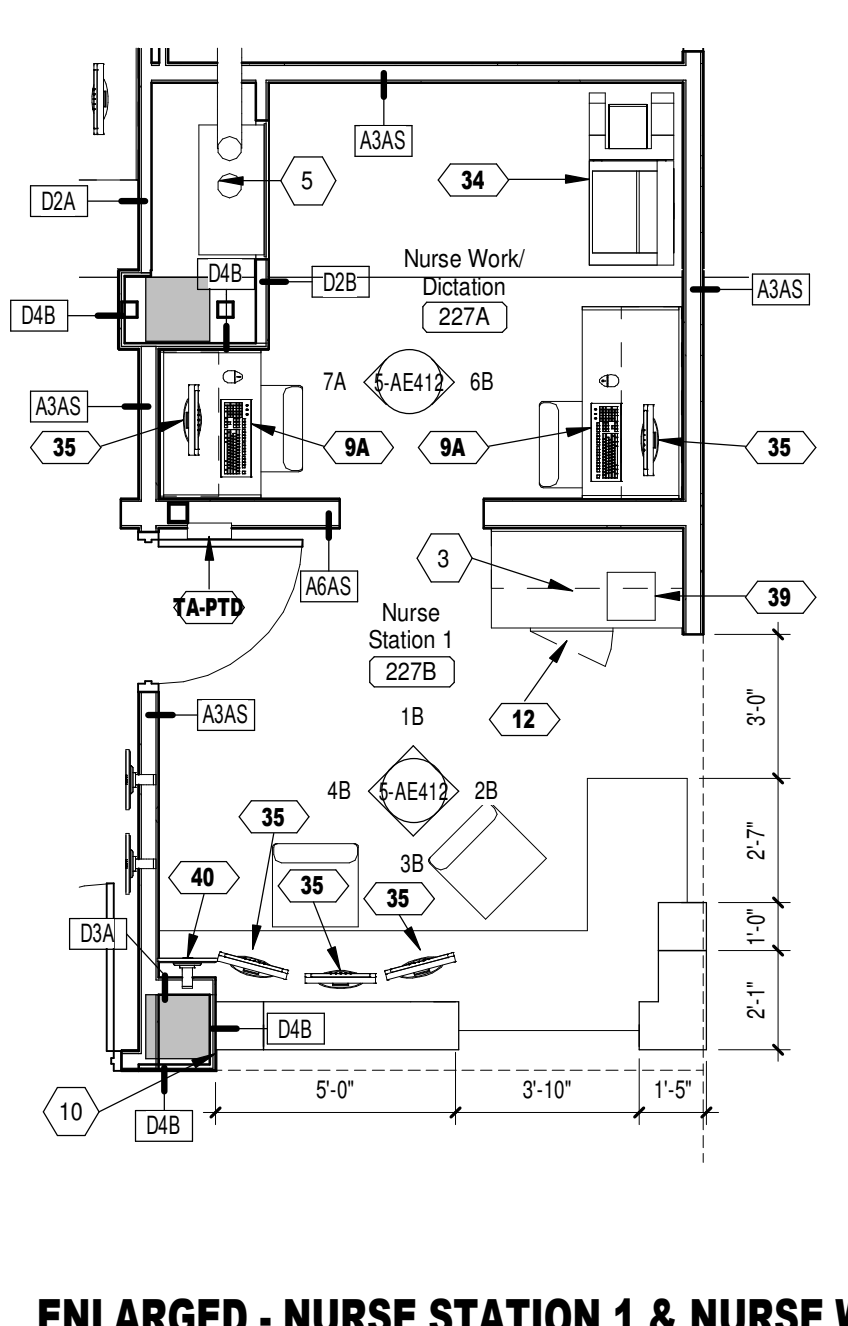
2F ENLARGED - NURSE STN 2
1/4" = 1'-0"



3F ENLARGED - NURSE STN 4
1/4" = 1'-0"



4F ENLARGED - TOILET ROOMS
1/4" = 1'-0"



5F ENLARGED - NURSE STATION 1 & NURSE WORK (227A, 227B, 331B, 331C)
1/4" = 1'-0"

SPECIALTY EQUIPMENT SCHEDULE - TYPE MARK					
Equip #	Description	Manufacturer	Model	Furnish/Install	Comments
1A	Headwall	Herman Miller, Inc.	TW142-48G	CFCI	1
1E	Chaise	Herman Miller, Inc.	TW190	CFCI	1
2A	Wardrobe Cabinet Drawer L-R Hinged Door Arc Pull 21D	Herman Miller, Inc.	TW300.21DLD	CFCI	2
2B	Wardrobe Cabinet Drawer L-R Hinged Door Arc Pull 21D	Herman Miller, Inc.	TW800.2024	CFCI	2
2C	Close-Out Stopped Cabinet Top 21D 24W	Herman Miller, Inc.	TW406.2124	CFCI	2
2D	Linen Cart With Lid	Herman Miller, Inc.	TW500.N	CFCI	2
2E	Work Surface w/Backsplash Cabinet 13D 48W	Herman Miller, Inc.	TW210.1348K	CFCI	2
2F	Close-Out Top for Use Between Two Side Closeouts 48W	Herman Miller, Inc.	TW402.A48	CFCI	2
2F	Work Surface w/Backsplash Cabinet 21D 48W	Herman Miller, Inc.	TW210.2148K	CFCI	2
2G	Linen Cart With lid - Solved	Herman Miller, Inc.	TW500.N	CFCI	2
2H	Wardrobe Cabinet Drawer L-R Hinged Door Arc Pull 21D	Herman Miller, Inc.	TW300.21DLD	CFCI	2, 12
2J	Glove Cabinet L-R Hinged Door 24W	Herman Miller, Inc.	TW322.0624L	CFCI	2
2K	Face Tile Dunwarp 20H 24W	Herman Miller, Inc.	TW120.2024A TW120.2024A	CFCI	2
2L	Work Surface w/Backsplash Cabinet 13D 36W	Herman Miller, Inc.	TW210.1324K	CFCI	2
2M	Drawer Module 3-36 High Drawers Flex Pull Lock 13D	Herman Miller, Inc.	TW310.1338L	CFCI	2
2N	Sink ADA Compliant faucet hole	Herman Miller, Inc.	TW235.1330H	CFCI	2
2P	Sink Enclosure ADA-Compliant Sink	Herman Miller, Inc.	TW233.1330	CFCI	2
2Q	Accessory Rail 24W	Herman Miller, Inc.	TW700.24	CFCI	2
2R	Close-Out Stopped Cabinet Top 6D 60W	Herman Miller, Inc.	TW406.0660	CFCI	2
2S	Face Tile corian 20H 30W	Herman Miller, Inc.	TW120.2030K	CFCI	2
2T	Above-Sink Tile corian ADA-Compliant Sink 20H 30W	Herman Miller, Inc.	TW129.2030K	CFCI	2
3	Patient Bed			OFCI	
4	Footwall - 42" Television Plasma		TV P42	OFCI	
6	Clock			OFCI	
8	Privacy Curtain			CFCI	3
9	Monitor Keyboard	Herman Miller	Fluid LT Combo 4m	OFCI	
9A	Computer Keyboard and Mouse	Generic	Generic	OFCI	
10	IV Stand			OFCI	
11	Table, Bedside	TBD	TBD	OFCI	
12	Medication Storage			OFCI	
13	Lab Shelf	ASI	0698	CFCI	6W X 18D @ 34 A.F.F.
15	Waste Can	TBD	TBD	OFCI	
21	Cart, Clean Linen	TBD	TBD	OFCI	
22	Wine Shelving			OFCI	
23	Cart, Solid Linen	TBD	TBD	OFCI	
24	Cart, Trash Collection	Rubbermaid	6144	OFCI	
25	Recastable Bio-Waste	Rubbermaid	6144	OFCI	
26	Tray Storage - Wire Shelving			OFCI	24D X 36W X 72H
27	Refrigerator			OFCI	
28	Ice Machine, Countertop			OFCI	
29	Dispenser, Medication	Omicell	96-600	OFCI	
30	Medications Cart	TBD	TBD	OFCI	
31	Patient Monitor	Herman Miller	Flo Monitor Arm	OFCI	6
32	Cart, Clean Linen	TBD	TBD	OFCI	
33	LCD Monitor - Nurse Stations	TBD	17" LCD	OFCI	
34	Copier			OFCI	
35	Computer Monitor	Generic	Generic	OFCI	
36	Marker Board	Peter Pepper	TC-9648	CFCI	96W X 48H
37	Projection Screen			OFCI	84W X 84H view area
38	Shelving Unit			CFCI	48W X 14D
39	Glucose Monitor	CASMED	740	OFCI	
40	29" LCD MONITOR		29" LCD	OFCI	
41	Patient Lift - Motor and Rails	LIKO	243 & 250 (Motor)	OFCI	Rail - Varies, Max 3.8 Meters
42	Pneumatic Tube System			CFCI	
43	Ceiling Mounted Projector			OFCI	
45	Collie Brewer	TBD	TBD	OFCI	
46	ICE MAKER			OFCI	
48	Refrigerator, Under Counter	Kanmore	46-946739	OFCI	
49	Shelving Unit			OFCI	3 Shelves - 32L X 15D
50	Cabinet - Provided by Owner			OFCI	32L X 32H X 10D
52	Cork Board	PETER PEPPER		CFCI	10

ENLARGED PLAN KEYNOTES	
1	SQUARE FLOOR DRAIN. REFERENCE PLUMBING.
2	SLOPE FLOOR TO DRAIN.
3	SOLID SURFACE COUNTERTOP.
4	NEW ALUMINUM FRAME WINDOW. REFERENCE WINDOW TYPES.
5	PNEUMATIC TUBE SYSTEM. (ALTERNATE #1)
6	3" X 3" SOLID SURFACE TRIM PIECE FOR SHOWER CURTAIN ROD INSTALLATION. CUT TO MATCH ANGLE OF WALL. MIN. 2" DEEP AT NARROWEST DIMENSION.
7	EXISTING WINDOW.
8	EXISTING CONSTRUCTION.
9	FURRED OUT CHASE FOR M/E/P.
10	FURRED OUT COLUMN CHASE AROUND ALL EXISTING & NEW COLUMNS.
11	PARTIAL HEIGHT WALL WITH SOLID SURFACE CAP. REFERENCE DETAIL 8E.AE402.
12	SOLID SURFACE COUNTERTOP WITH BACKSPASH, APRON, AND INTEGRAL SINK

NOTE: NOT ALL KEYNOTES MAY BE USED ON EACH PLAN

COMMENT #	COMMENT DESCRIPTION
1	HEADWALL COMPONENTS
2	FOOTWALL COMPONENTS
3	REFERENCE INTERIOR DRAWINGS AND SPECIFICATIONS
4	HINGED
5	STAINLESS STEEL
6	TO BE INSTALLED ON HEADWALL SYSTEM
7	RECESSED IN CEILING
8	WALL MOUNTED
9	ALTERNATE #1
10	REFERENCE SPECIFICATIONS
11	NOTE THE FOLLOWING: NEW 12 PATIENT LIFT SYSTEMS (LIFT MOTOR & ASSOCIATED RAILS). MODEL 243ES (MOTOR) EXISTING ON SITE RAILS: 1 - 31013430V MODEL - 3 METERS RAILS: 9 - 31010322V MODEL - 3.2 METERS RAILS: 5 - 31010329V MODEL - 3.2 METERS RAILS: 6 - 31010309V MODEL - 3 METERS RAILS: 5 - 31010309V MODEL - 3.8 METERS RAILS: 1 - 31010388V MODEL - 3.8 METERS SALVAGE AND REINSTALL - 16 LIFT SYSTEMS RAILS AND ASSOCIATED MOTORS AND CHARGING STATIONS - 243 MODEL AND 250 MODEL FOR MOTORS CONTRACTOR IS RESPONSIBLE TO FURNISH AS REQUIRED AND INSTALL 28 CEILING LIFT SYSTEMS COORDINATE LOCATIONS AND INSTALLATION WITH OWNER.
12	CUSTOM FOOTWALL WARDROBE COMPONENT. REFERENCE AE413 FOR INFORMATION

ACC #	DESCRIPTION	Manufacturer	Model	Furnish/Install	Comments
TA-BCS	Baby Changing Table	See Specifications		CFCI	
TA-CH	Robe Hook	See Specifications		CFCI	
TA-FEC	Fire Extinguisher Cabinet	Generic	Generic	CFCI	
TA-GB	Grab Bar - GB1, GB4, GB3	See Specifications		CFCI	Ref. 1A on AE402 for info
TA-GB2	Grab Bar - Hinged	See Specifications		CFCI	Hinged
TA-GL	Gloves	See Specifications		CFCI	
TA-HS	Hand Sanitizer Dispenser	See Specifications		CFCI	
TA-MI	Mirror, 18" X 30"	See Specifications		CFCI	
TA-M2	Mirror, 24" X 36"	See Specifications		CFCI	
TA-MPR	Mop/Broom Rack	See Specifications		CFCI	
TA-PTD	Paper Towel Dispenser	Kimberly Clark	999102	OFCI	
TA-SC	Shower Curtain			OFCI	
TA-SD	Soap Dispenser, Wall Mount	Stens	51594RO	OFCI	
TA-SH	Soap Dish			OFCI	
TA-SHP	Sharps Disposal	Tyco/ Health Care kendall		OFCI	Contractor to install as instructed by owner
TA-SNX	Sanitary Napkin Disposal	See Specifications		CFCI	
TA-TB	Towel Bar			CFCI	
TA-TP	Toilet Paper Dispenser	Kimberly Clark	95070700	OFCI	Contractor to install as instructed by owner

PATIENT ROOM	ROOM NUMBER - 2ND LEVEL	ROOM NUMBER - 3RD LEVEL
PATIENT ROOM TYPE 1	231, 232, 233, 234, 235, 236	335, 336, 337, 338, 339, 340
PATIENT ROOM TYPE 2	203, 204, 205	303, 304, 305
PATIENT ROOM TYPE 3	208	308
PATIENT ROOM TYPE 4	206, 207	306, 307
PATIENT ROOM TYPE 5	237, 230 SIM.	334 SIM, 341

LEGEND - PATIENT ROOM TYPES

**FULLY SPRINKLERED
100% CONSTRUCTION DOCUMENTS**

<p>CONSULTANTS:</p> <p>RPA Design Suite 505 Charlotte, NC 28210 Phone 704-887-3500 Fax 704-887-3507</p>	<p>ARCHITECTS/ ENGINEERS:</p> <p>TSP, Inc. 1112 N. West Ave. Sioux Falls, SD 57104 phone: (605) 336-1160 fax: (605) 336-7926 www.teamtsp.com</p>	<p>Drawing Title</p> <p>ENLARGED PLANS</p>	<p>Project Title</p> <p>Sioux Falls VA Health Care System Acute Inpatient Medical Unit Addition and Renovation</p>	<p>Project Number</p> <p>438-369</p>	<p>Office of Construction and Facilities Management</p>
		<p>Approved: Project Director</p>	<p>Location</p> <p>1A Medical Center 2801 W. 22nd Street, PO Box 5046 Sioux Falls, SD 57117-5046</p>	<p>Drawing Number</p> <p>5-AE401 Dwg. 35 of 123</p>	
<p>MARK</p>	<p>REVISION DESCRIPTION</p>	<p>Date</p> <p>08/06/12</p>	<p>Checked</p> <p>RAH</p>	<p>Drawn</p> <p>EOO</p>	<p>Copyright TSP, Inc. 2012</p>

C:\TSP\Rev\Local Files\080807_VA_A12_Central_08a08a.rvt
8/30/2012 4:18:21 PM