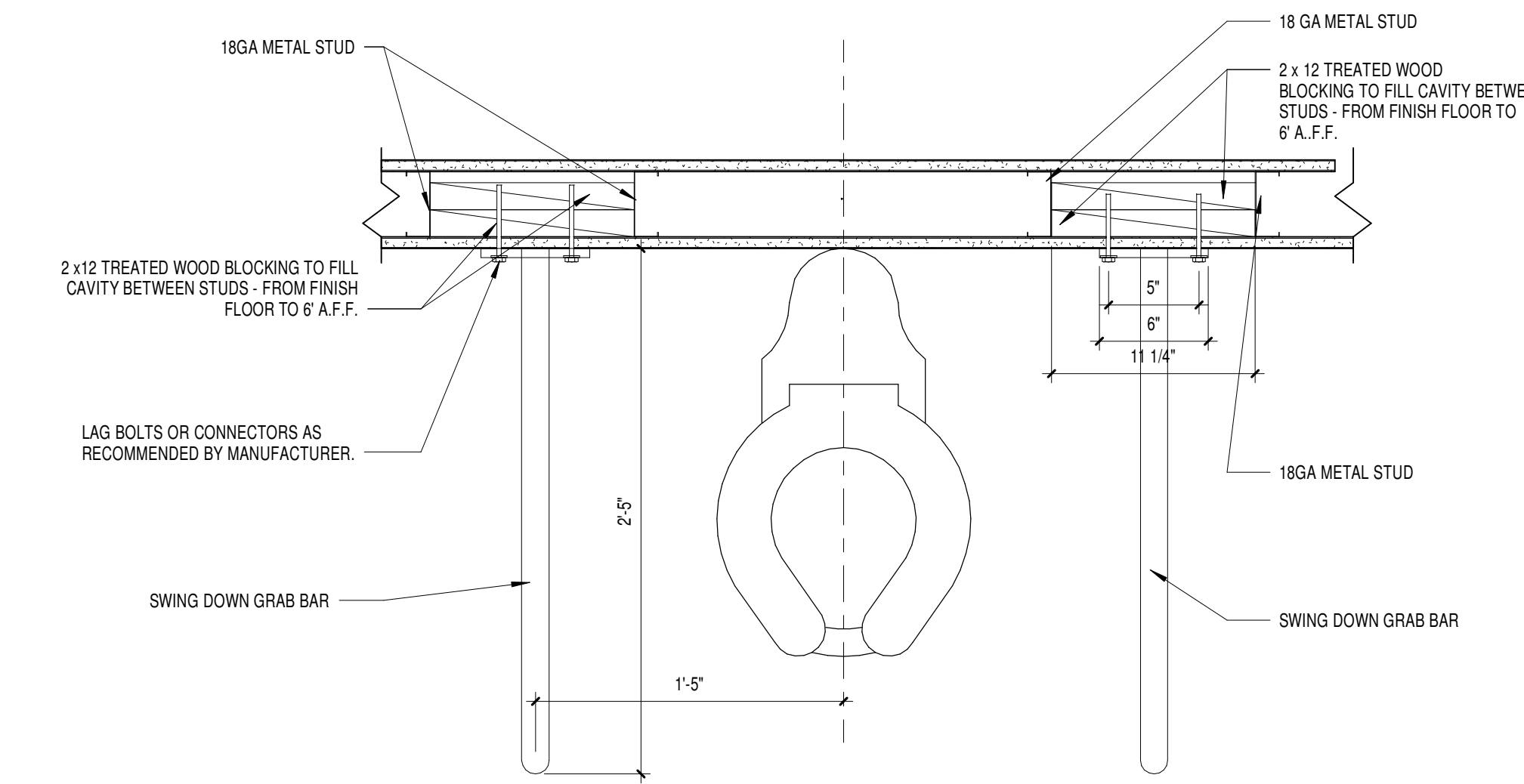
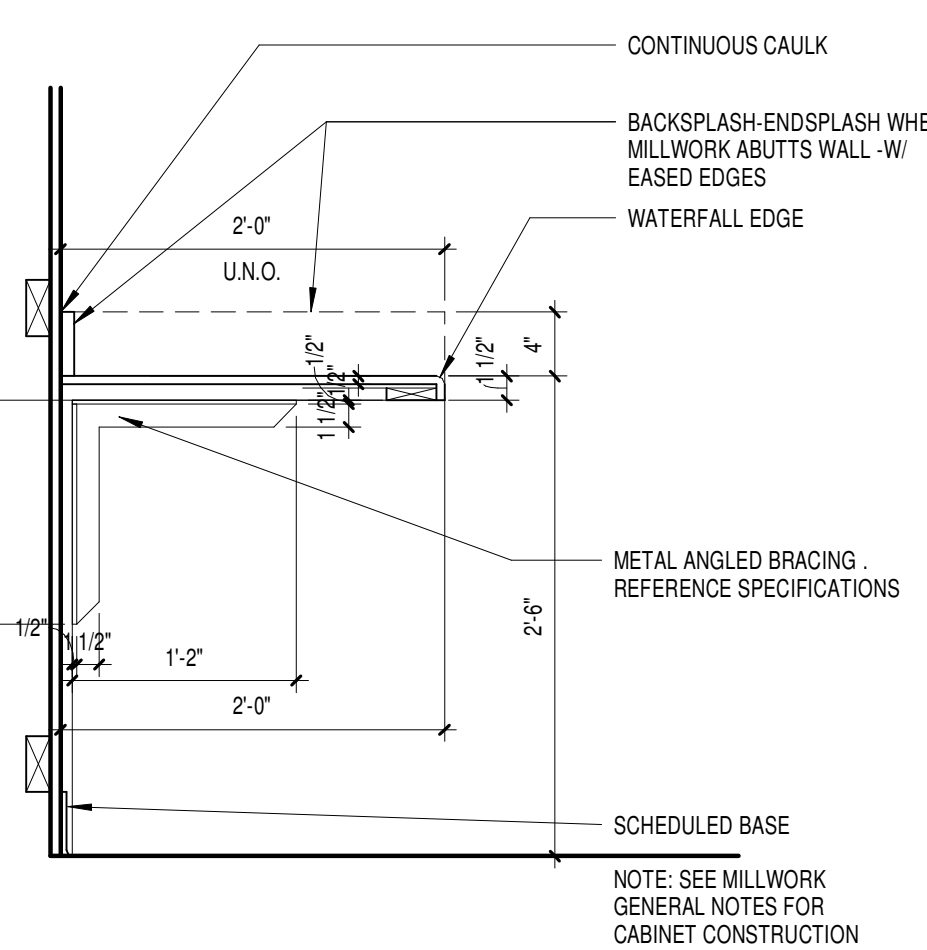
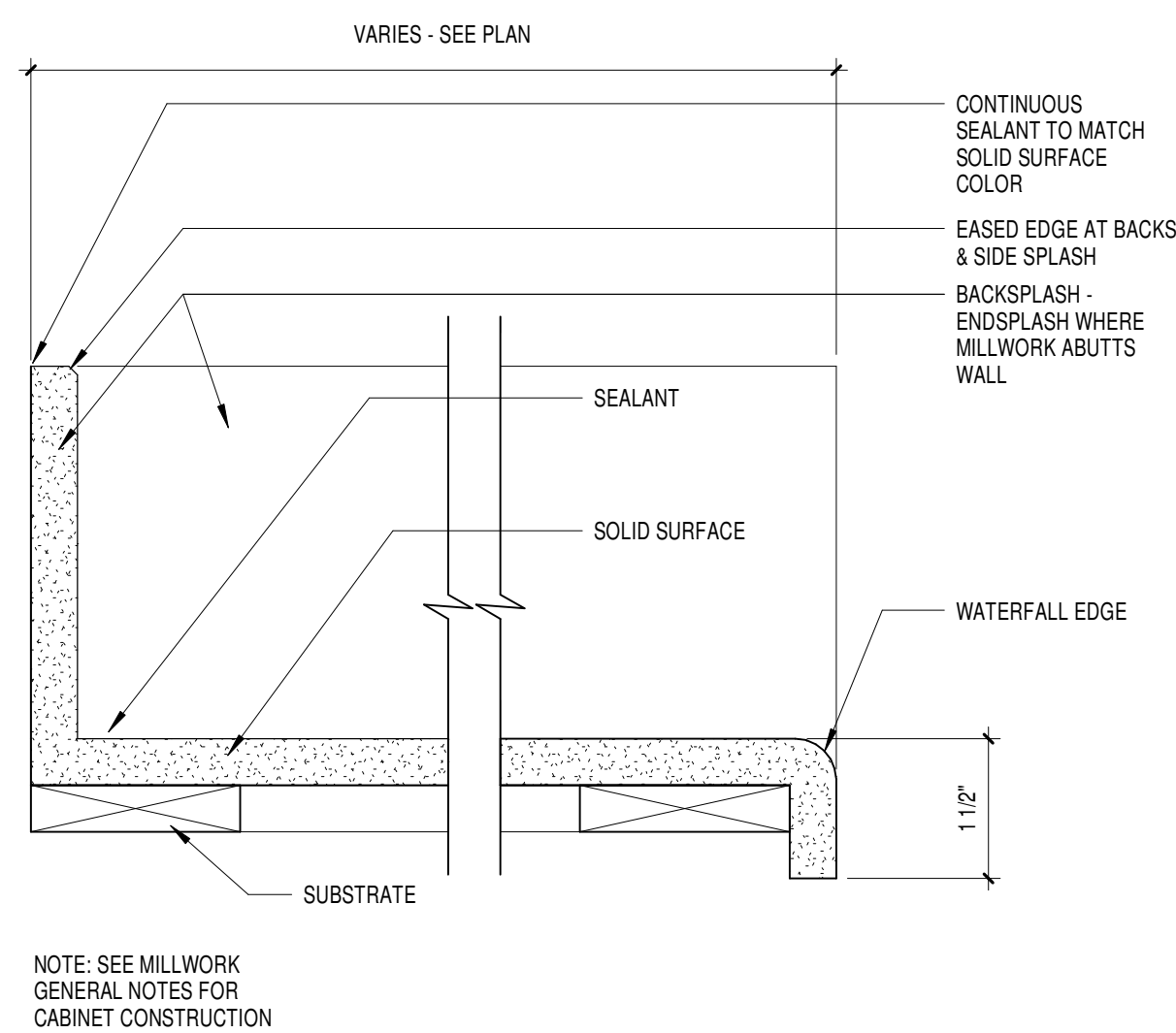
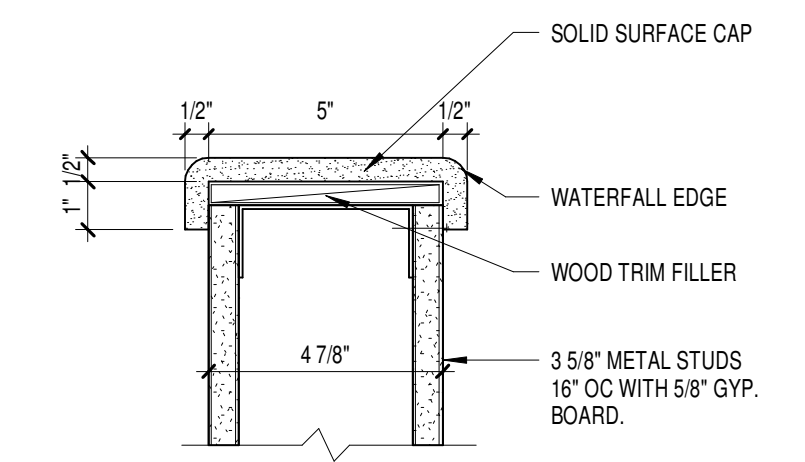
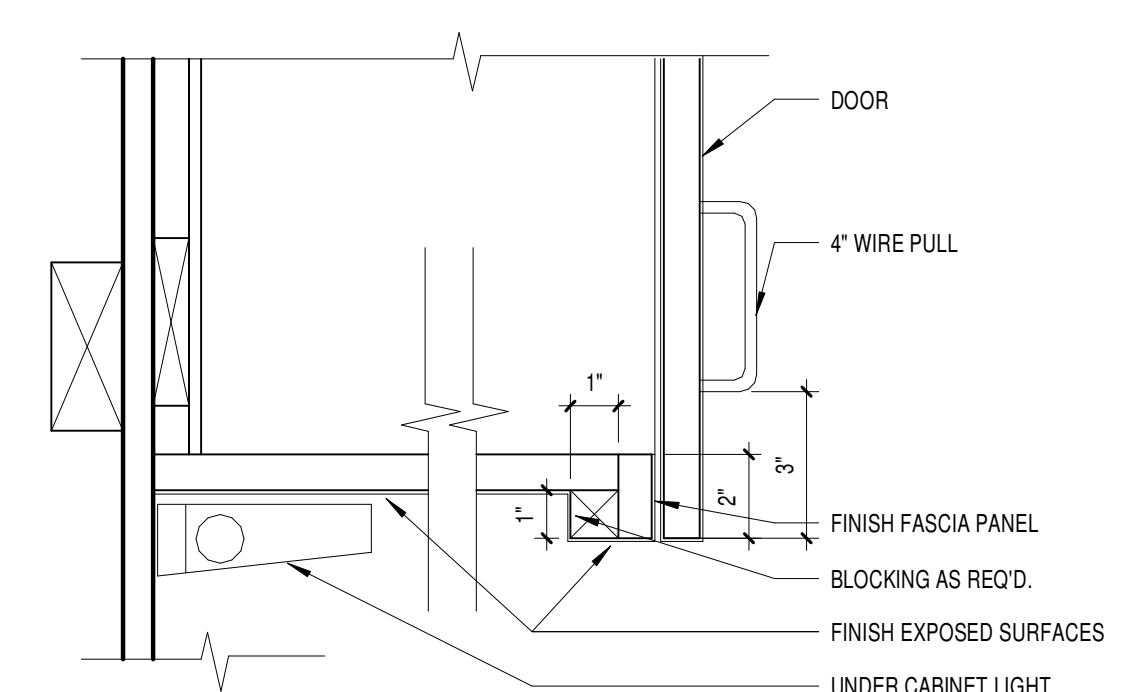
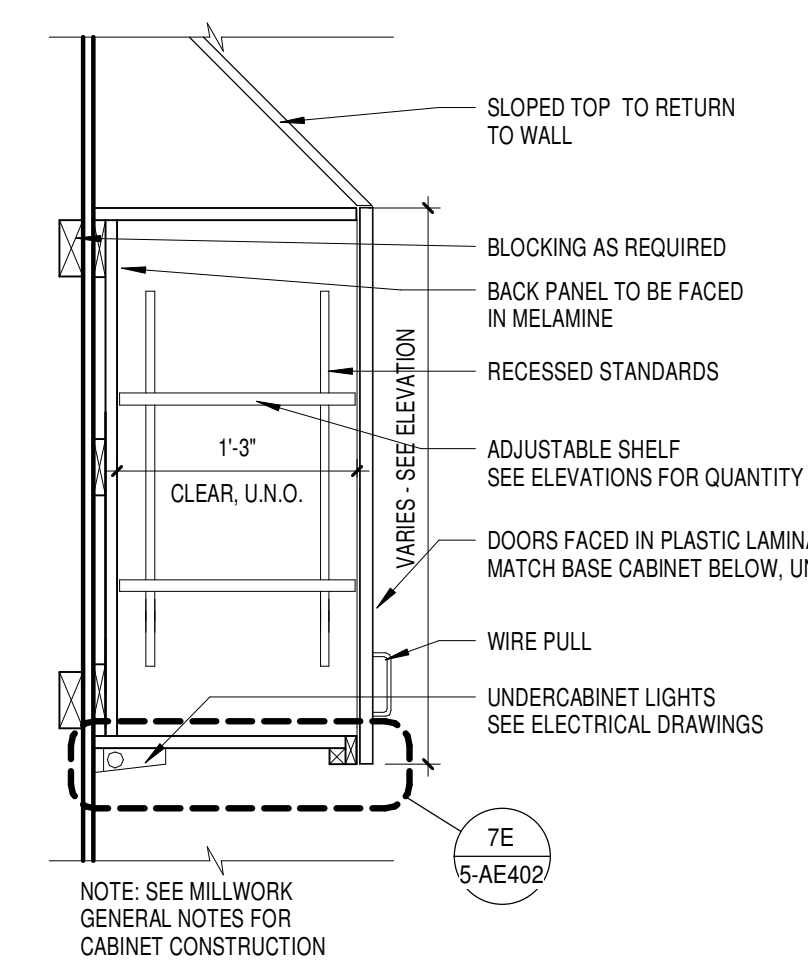
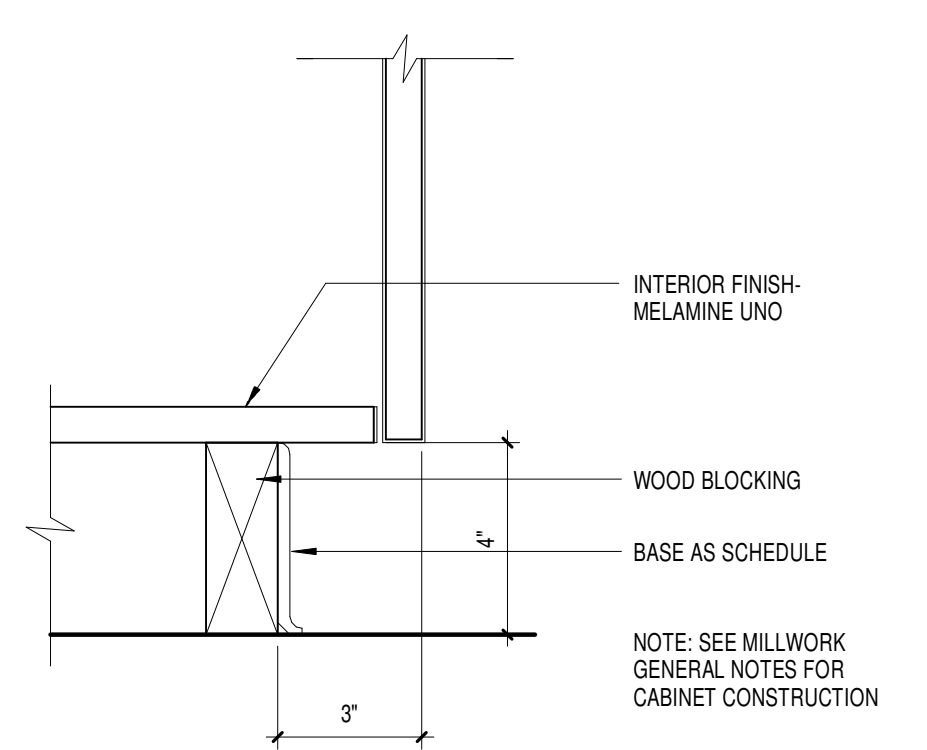
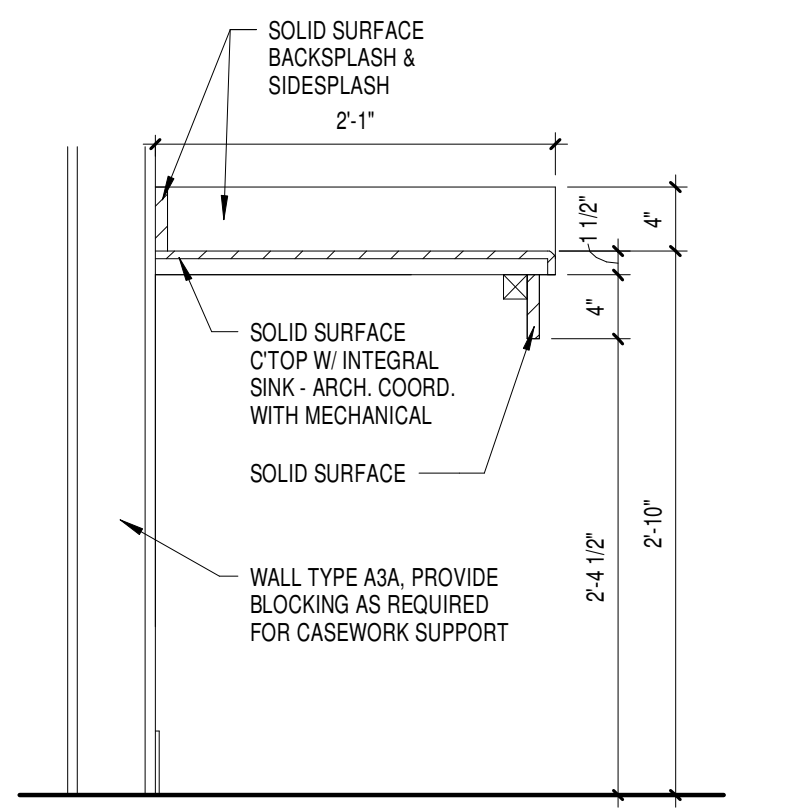
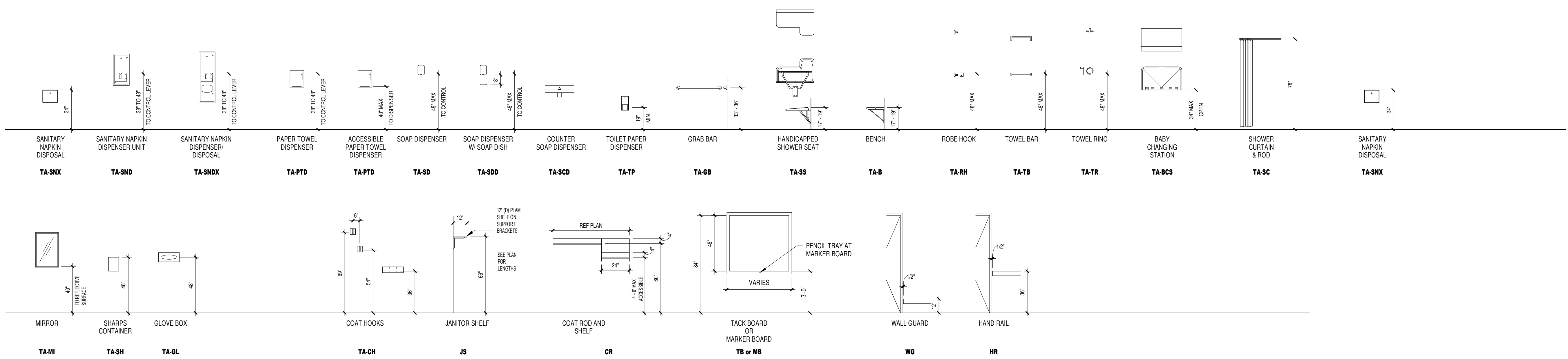


- INT ELEVATION GENERAL NOTES**
- A. 25 1/2" DEEP PLASTIC LAMINATE OR SOLID SURFACE COUNTERTOP U.N.O.
  - B. SEE BUILDING ACCESSORIES FOR ADDITIONAL INFORMATION.
  - C. ASSUME PLASTIC LAMINATE FILLER AT END OF ALL CASEWORK ADJACENT TO A WALL.
  - D. ALL WALL CABINETS AND TALL CABINETS WILL HAVE SLOPED TOPS U.N.O.
  - E. COORDINATE GROMMET LOCATION WITH OWNER.
  - F. CABINET DEPTH (NOT INCLUDING DOORS) U.N.O.
    - WALL CABINET = 14"
    - BASE CABINET = 24"
    - TALL CABINET = 24"
  - G. REFERENCE AE401 FOR EQUIPMENT SCHEDULE & INFORMATION.
  - H. REFERENCE AE402 FOR WALL GUARD AND CHAIR RAIL ELEVATIONS. REFERENCE FINISH PLANS FOR WALL GUARD, CORNER GUARD AND CHAIR RAIL LOCATIONS.
  - I. REFERENCE AE413 FOR ENLARGED HEADWALL/FOOTWALL LOCATIONS.
  - J. CONTRACTOR TO PROVIDE PLYWOOD BACKING AND/ OR BLOCKING BEHIND ALL ACCESSORIES AND WALL MOUNTED ITEMS.
  - K. UNDER CABINET LIGHTING TO BE RECESSED UNDER CABINET. REFERENCE RE/AE402 FOR WALL CABINET DETAILS.
  - L. REFERENCE SHEET IN601 FOR ROOM FINISH SCHEDULE AND FINISH MATERIALS KEY.



**1F** TYP SOLID SURFACE COUNTER W/ BULLNOSE  
1\"/>

**3F** TYP COUNTER W/ KNEE SPACE ANGLED SUPPORT  
1\"/>

**5F** BLOCKING AT GRAB BAR DETAIL  
1 1/2\"/>

|   |  |  |  |   |  |   |  |  |  |   |  |
|---|--|--|--|---|--|---|--|--|--|---|--|
| <b>CONSULTANTS:</b><br><br>RPA Design<br>Suite 300<br>Charlotte, NC 28210<br>Phone 704-887-3500<br>Fax 704-887-3507 |  | <b>ARCHITECTS/ ENGINEERS:</b><br>TSP, Inc.<br>1112 N. West Ave.<br>Sioux Falls, SD 57104<br>phone: (605) 336-1160<br>fax: (605) 336-7926<br>www.teamtsp.com<br><br>To Solve. To Excel. Together. |  | <b>Drawing Title</b><br>ACCESSORY DIAGRAMS<br><br><b>Approved:</b> Project Director |  | <b>Project Title</b><br>Sioux Falls VA Health Care System<br>Acute Inpatient Medical Unit Addition<br>and Renovation<br><br><b>Location</b><br>VA Medical Center<br>2301 W. 22nd Street, PO Box 5046<br>Sioux Falls, SD 57117-5046<br><br><b>Date</b><br>08/06/12<br><b>Checked</b><br>RAH<br><b>Drawn</b><br>EOO |  | <b>Project Number</b><br>438-369<br><b>Building Number</b><br>5<br><b>Drawing Number</b><br><b>5-AE402</b><br>Dwg. 36 of 123 |  | <b>Office of Construction and Facilities Management</b><br> |  |
| <b>MARK</b><br>REVISION DESCRIPTION<br>DATE   |  |  |  |   |  |   |  |  |  |   |  |

C:\TSP\Revit\Local\Files\04100857\_VA\_A12\_Central.dwg  
8/30/2012 3:44:37 PM