

INT ELEVATION GENERAL NOTES

- A. 25 1/2" DEEP PLASTIC LAMINATE OR SOLID SURFACE COUNTERTOP U.N.O.
B. SEE BUILDING ACCESSORIES FOR ADDITIONAL INFORMATION.
C. ASSUME PLASTIC LAMINATE FILLER AT END OF ALL CASEWORK ADJACENT TO A WALL.
D. ALL WALL CABINETS AND TALL CABINETS WILL HAVE SLOPED TOPS U.N.O.
E. COORDINATE GROMMET LOCATION WITH OWNER.
F. CABINET DEPTH (NOT INCLUDING DOORS) U.N.O.
WALL CABINET = 14"
BASE CABINET = 24"
TALL CABINET = 24"
G. REFERENCE AE401 FOR EQUIPMENT SCHEDULE & INFORMATION.
H. REFERENCE AE402 FOR WALL GUARD AND CHAIR RAIL ELEVATIONS. REFERENCE FINISH PLANS FOR WALL GUARD, CORNER GUARD AND CHAIR RAIL LOCATIONS.
I. REFERENCE AE413 FOR ENLARGED HEADWALL/FOOTWALL LOCATIONS.
J. CONTRACTOR TO PROVIDE PLYWOOD BACKING AND/ OR BLOCKING BEHIND ALL ACCESSORIES AND WALL MOUNTED ITEMS.
K. UNDER CABINET LIGHTING TO BE RECESSED UNDER CABINET. REFERENCE 6E/AE402 FOR WALL CABINET DETAILS.
L. REFERENCE SHEET IN601 FOR ROOM FINISH SCHEDULE AND FINISH MATERIALS KEY.

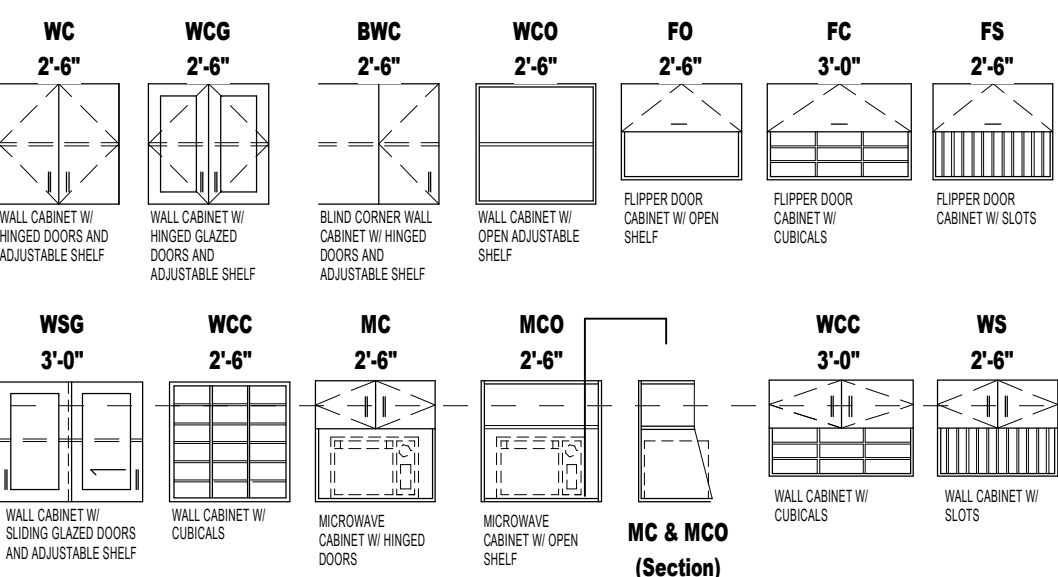
INTERIOR ELEVATION KEYNOTES

- 1 P-LAM SCRIBE/ FILLER
2 FINISHED END PANEL
3 GYPSUM BOARD SOFFIT
4 GYPSUM BOARD BULKHEAD
5 WHITE BOARD SURFACE. REFERENCE SPECIFICATIONS.
6 UNDER CABINET LIGHTING. REFERENCE ELECTRICAL.
7 2' SHELF WITH COAT ROD.
8 SOLID SURFACE COUNTERTOP APRON AT SINK. REFERENCE DETAIL 1E/AE402.
9 SOLID SURFACE SIDE SPLASH
10 WALL BASE. REFERENCE FINISH SCHEDULE
11 WALL SCONCE. REFERENCE ELECTRICAL
12 TRANSLUCENT RESIN PANEL (TRP1)
13 SOLID SURFACE COUNTERTOP
14 INTEGRAL SOLID SURFACE BACK SPLASH.
15 LOCKERS. REFERENCE SPECIFICATIONS.
16 LOCKABLE. KEYED ALIKE.
17 COUNTERTOP SUPPORT. REFERENCE DETAIL 3F ON AE402.
18 TOE KICK. REFERENCE DETAIL 3E/AE402.
19 HIGH IMPACT WALL SYSTEM
20 P-LAM COUNTERTOP (PLAM2)
21 WOOD LEDGER. PAINT TO MATCH WALL.
22 STAINLESS STEEL COUNTERTOP WITH BACKSLASH/SIDESPLASH & INTEGRAL STAINLESS STEEL BOWL AND LEFT HAND DRAINAGE BOARD.
23 STAINLESS STEEL CABINETRY.
24 WALL SYSTEM SHEET PROTECTION (WSP2). REFERENCE INTERIOR FINISH PLANS.
25 SEE IN-02 FOR LOCATION OF LEDGER STONE AT INDENTED PORTION OF EAST WALL. TO GO 6" ABOVE OLG ELEV.
NOTE: NOT ALL KEYNOTES MAY BE USED ON EACH PLAN.

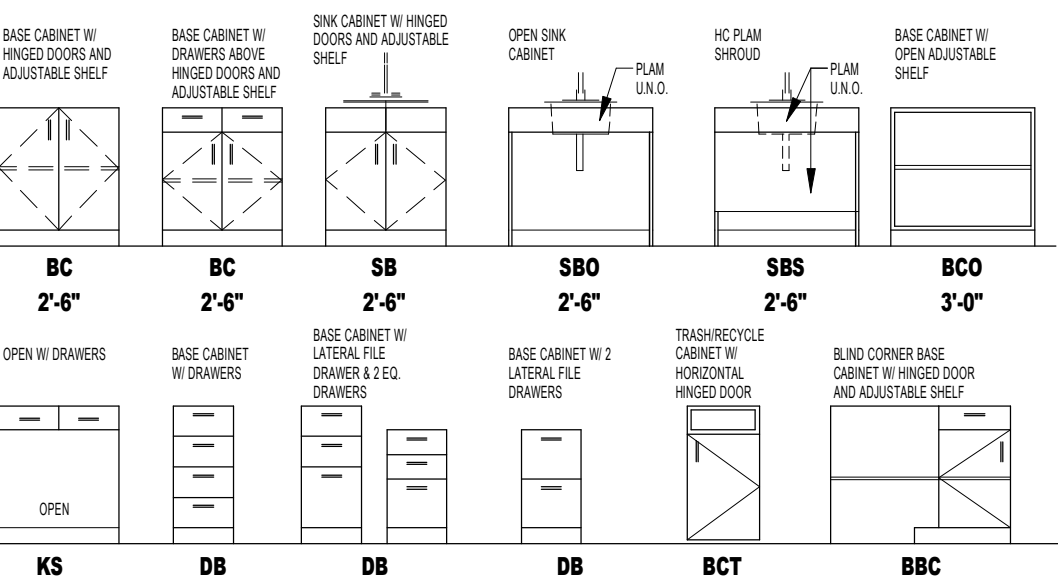
CABINET KEY

INDICATES UNIT TYPE — WC — INDICATES UNIT WIDTH
INDICATES UNIT DEPTH (OTHER THAN STANDARD) — 3'-0" — INDICATES UNIT DEPTH
— 1'-6" —

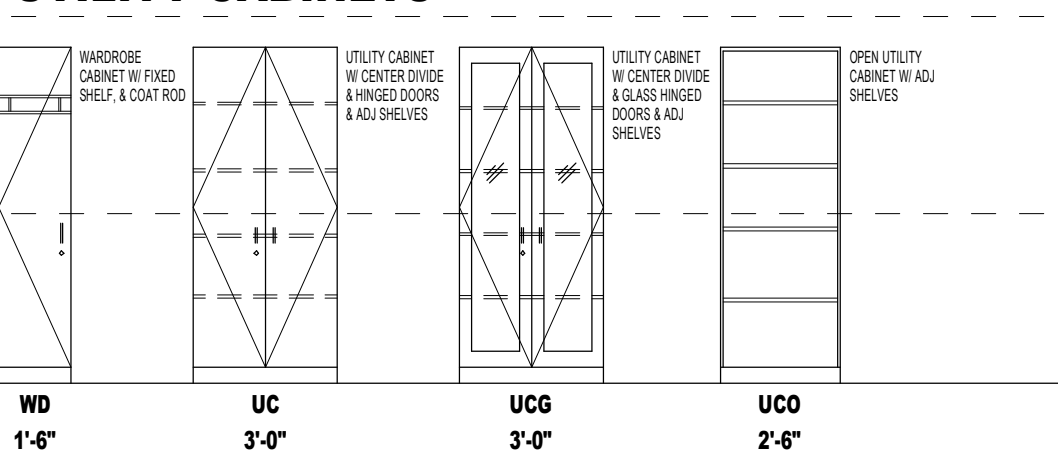
WALL CABINETS



BASE CABINETS



UTILITY CABINETS



PATIENT ROOM	ROOM NUMBER - 2ND LEVEL	ROOM NUMBER - 3RD LEVEL
PATIENT ROOM TYPE 1	231, 232, 233, 234, 235, 236	335, 336, 337, 338, 339, 340
PATIENT ROOM TYPE 2	203, 204, 205	303, 304, 305
PATIENT ROOM TYPE 3	208	308
PATIENT ROOM TYPE 4	206, 207	306, 307
PATIENT ROOM TYPE 5	237, 230 SIM.	334 SIM, 341

FULLY SPRINKLERED
100% CONSTRUCTION DOCUMENTS

Office of
Construction
and Facilities
Management

Department of
Veterans Affairs

Dwg. 38 of 123

Project Title
**Sioux Falls VA Health Care System
Acute Inpatient Medical Unit Addition
and Renovation**

Location
VA Medical Center
2901 W. 22nd Street, PO Box 5046
Sioux Falls, SD 57117-5046

Date
08/06/12

Checked
RAH

Drawn
EOO

Drawing Title
INTERIOR ELEVATIONS

Approved: Project Director

ARCHITECTS/ ENGINEERS:

TSP, Inc.
1112 N. West Ave.
Sioux Falls, SD 57104
phone: (605) 336-1160
fax: (605) 336-7926
www.teamtsp.com



CONSULTANTS:



RPA Design
Suite 500
Charlotte, NC 28210
Phone 704-887-3500
Fax 704-887-3507