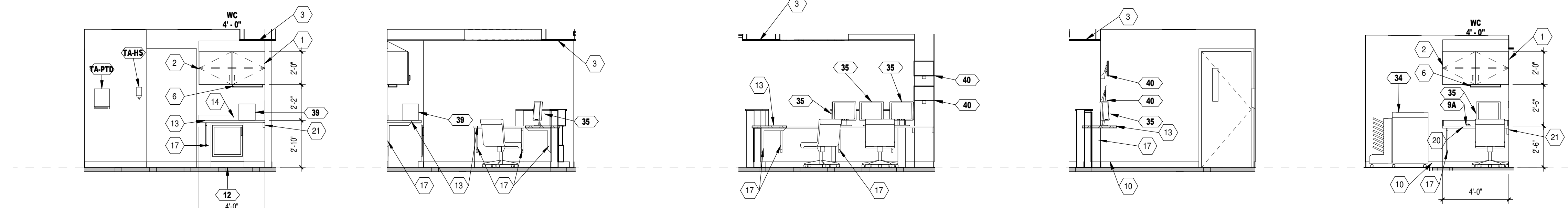
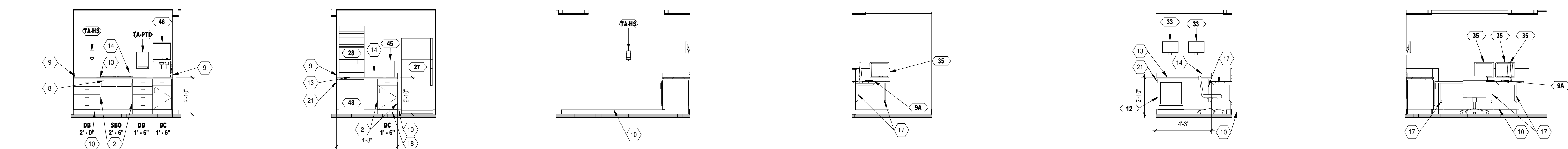


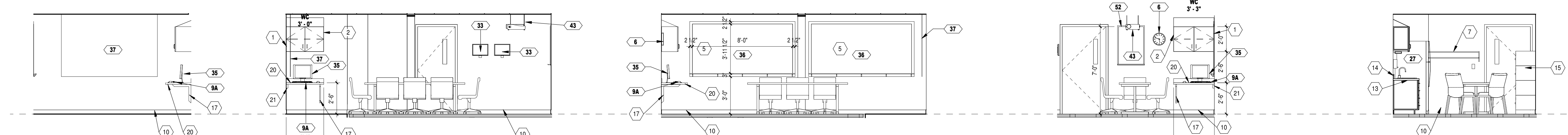
1A Soiled Room 1a 1/4" = 1'-0" 2A Soiled Room 1b 1/4" = 1'-0" 3A Nurse Station 3a 1/4" = 1'-0" 4A Nurse Station 3b 1/4" = 1'-0" 5A Nurse Station 3c 1/4" = 1'-0" 7A Work Room 1b 1/4" = 1'-0"



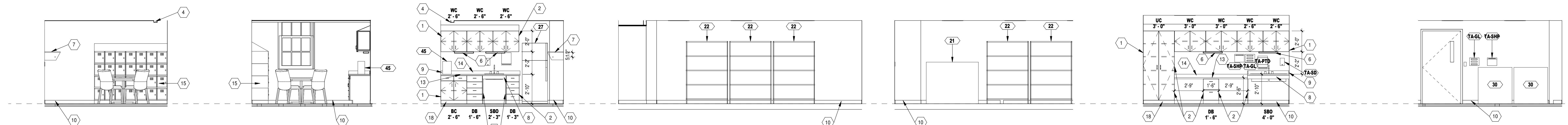
1B Nurse Station 1a 1/4" = 1'-0" 2B Nurse Station 1b 1/4" = 1'-0" 3B Nurse Station 1c 1/4" = 1'-0" 4B Nurse Station 1d 1/4" = 1'-0" 6B Work Room 1a 1/4" = 1'-0"



1D Nourish 1a 1/4" = 1'-0" 2D Nourish 1b 1/4" = 1'-0" 3D Nurse Station 2a 1/4" = 1'-0" 4D Nurse Station 2b 1/4" = 1'-0" 5D Nurse station 2c 1/4" = 1'-0" 7D Nurse Station 2d 1/4" = 1'-0"



1E Conference Room 1a 1/4" = 1'-0" 2E Conference Room 1b 1/4" = 1'-0" 4E Conference Room 1d 1/4" = 1'-0" 5E Conference Room 1c 1/4" = 1'-0" 7E Breakroom 1d 1/4" = 1'-0"



1F Breakroom 1a 1/4" = 1'-0" 2F Breakroom 1b 1/4" = 1'-0" 3F Breakroom 1c 1/4" = 1'-0" 4F Clean Room 1a 1/4" = 1'-0" 6F Clean Room 1b 1/4" = 1'-0" 7F Dialysis Room 1a 1/4" = 1'-0" 9F Meds Room 1b 1/4" = 1'-0"

INT ELEVATION GENERAL NOTES

- A. 25 1/2" DEEP PLASTIC LAMINATE OR SOLID SURFACE COUNTERTOP U.N.O.
- B. SEE BUILDING ACCESSORIES FOR ADDITIONAL INFORMATION.
- C. ASSUME PLASTIC LAMINATE FILLER AT END OF ALL CASEWORK ADJACENT TO A WALL.
- D. ALL WALL CABINETS AND TALL CABINETS WILL HAVE SLOPED TOPS U.N.O.
- E. COORDINATE GROMMET LOCATION WITH OWNER.
- F. CABINET DEPTH (NOT INCLUDING DOORS) U.N.O.
- G. WALL CABINET = 14"
- H. BASE CABINET = 24"
- I. TALL CABINET = 24"
- J. REFERENCE AE401 FOR EQUIPMENT SCHEDULE & INFORMATION.
- K. REFERENCE AE402 FOR WALL GUARD AND CHAIR RAIL ELEVATIONS. REFERENCE FINISH PLANS FOR WALL GUARD, CORNER GUARD AND CHAIR RAIL LOCATIONS.
- L. REFERENCE AE413 FOR ENLARGED HEADWALL/FOOTWALL LOCATIONS.
- M. CONTRACTOR TO PROVIDE PLYWOOD BACKING AND/OR BLOCKING BEHIND ALL ACCESSORIES AND WALL MOUNTED ITEMS.
- N. UNDER CABINET LIGHTING TO BE RECESSED UNDER CABINET. REFERENCE 6E/AE402 FOR WALL CABINET DETAILS.
- O. REFERENCE SHEET IN601 FOR ROOM FINISH SCHEDULE AND FINISH MATERIALS KEY.

INTERIOR ELEVATION KEYNOTES

- 1 P-LAM SCRIBE/ FILLER
 - 2 FINISHED END PANEL
 - 3 GYPSUM BOARD SOFFIT
 - 4 GYPSUM BOARD BULKHEAD
 - 5 WHITE BOARD SURFACE. REFERENCE SPECIFICATIONS.
 - 6 UNDER CABINET LIGHTING. REFERENCE ELECTRICAL.
 - 7 2" SHELF WITH COAT ROD.
 - 8 SOLID SURFACE COUNTERTOP APRON AT SINK. REFERENCE DETAIL 1E/AE402.
 - 9 SOLID SURFACE SIDE SPLASH
 - 10 WALL BASE. REFERENCE FINISH SCHEDULE
 - 11 WALL SCONCE. REFERENCE ELECTRICAL
 - 12 TRANSLUCENT RESIN PANEL (TRP1)
 - 13 SOLID SURFACE COUNTERTOP
 - 14 INTEGRAL SOLID SURFACE BACK SPLASH.
 - 15 LOOKERS. REFERENCE SPECIFICATIONS.
 - 16 LOOKABLE. KEYED ALIKE.
 - 17 COUNTERTOP SUPPORT. REFERENCE DETAIL 3F ON AE402.
 - 18 TOE KICK. REFERENCE DETAIL 3E/AE402.
 - 19 HIGH IMPACT WALL SYSTEM
 - 20 P-LAM COUNTERTOP (PLAM2)
 - 21 WOOD LEDGER. PAINT TO MATCH WALL.
 - 22 STAINLESS STEEL COUNTERTOP WITH BACKSPLASH/SIDESPLASH & INTEGRAL STAINLESS STEEL BOWL AND LEFT HAND DRAINAGE BOARD.
 - 23 STAINLESS STEEL CABINETRY.
 - 24 WALL SYSTEM SHEET PROTECTION (WSP2). REFERENCE INTERIOR FINISH PLANS.
 - 25 SEE IN102 FOR LOCATION OF LEDGER STONE AT INDENTED PORTION OF EAST WALL. TO GO 8" ABOVE CLO ELEV.
- NOTE: NOT ALL KEYNOTES MAY BE USED ON EACH PLAN.

PATIENT ROOM	ROOM NUMBER - 2ND LEVEL	ROOM NUMBER - 3RD LEVEL
PATIENT ROOM TYPE 1	231, 232, 233, 234, 235, 236	335, 336, 337, 338, 339, 340
PATIENT ROOM TYPE 2	203, 204, 205	303, 304, 305
PATIENT ROOM TYPE 3	208	308
PATIENT ROOM TYPE 4	206, 207	306, 307
PATIENT ROOM TYPE 5	237, 230 SIM.	334 SIM, 341

CONSULTANTS:

RPA Design
Suite 500
Charlotte, NC 28210
Phone 704-887-3500
Fax 704-887-3507

ARCHITECTS/ ENGINEERS:

TSP, Inc.
1112 N. West Ave.
Sioux Falls, SD 57104
phone: (605) 336-1160
fax: (605) 336-7926
www.teamtsp.com

To Solve. To Excel. Together.

Drawing Title
INTERIOR ELEVATIONS

Approved: Project Director

Project Title
Sioux Falls VA Health Care System
Acute Inpatient Medical Unit Addition
and Renovation

Location
VA Medical Center
2501 W. 22nd Street, PO Box 5046
Sioux Falls, SD 57117-5046

Date
08/06/12

Checked
RAH

Drawn
EOO

Project Number
438-369

Building Number
5

Drawing Number
5-AE412
Dwg. 39 of 123

Office of
Construction
and Facilities
Management

Department of
Veterans Affairs

MARK

REVISION DESCRIPTION	DATE

VA FORM 08-6231

FULLY SPRINKLERED
100% CONSTRUCTION DOCUMENTS