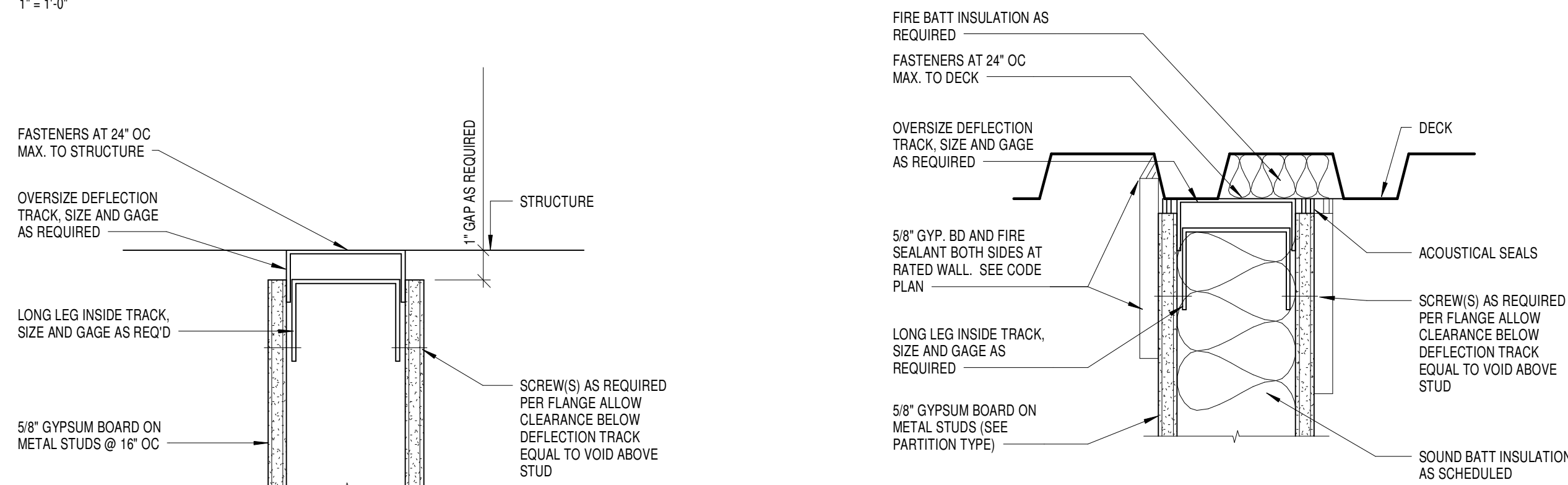
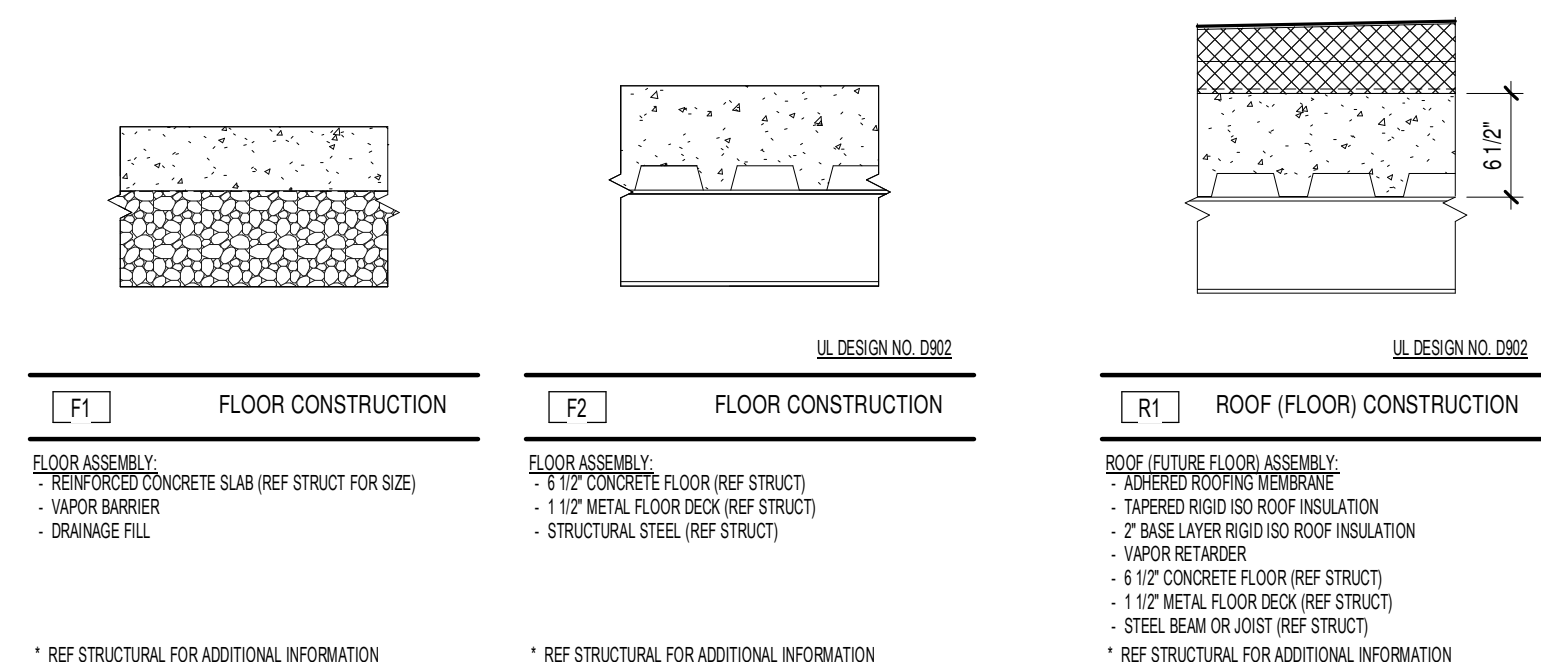


Legend - Partition Types  
1" = 1'-0"



2 DEFLECTION DETAIL - NON RATED  
3" = 1'-0"

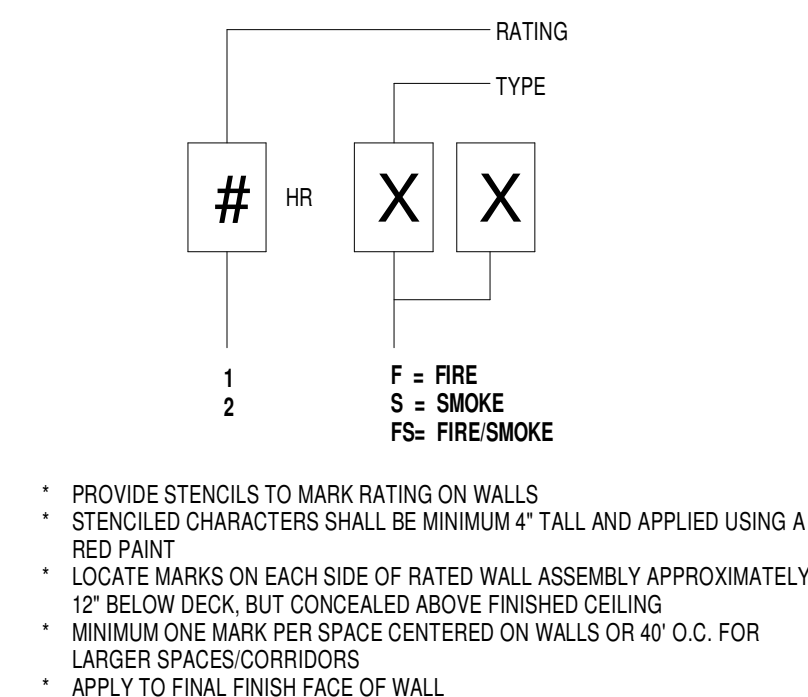
3 DEFLECTION DETAIL - RATED  
3" = 1'-0"



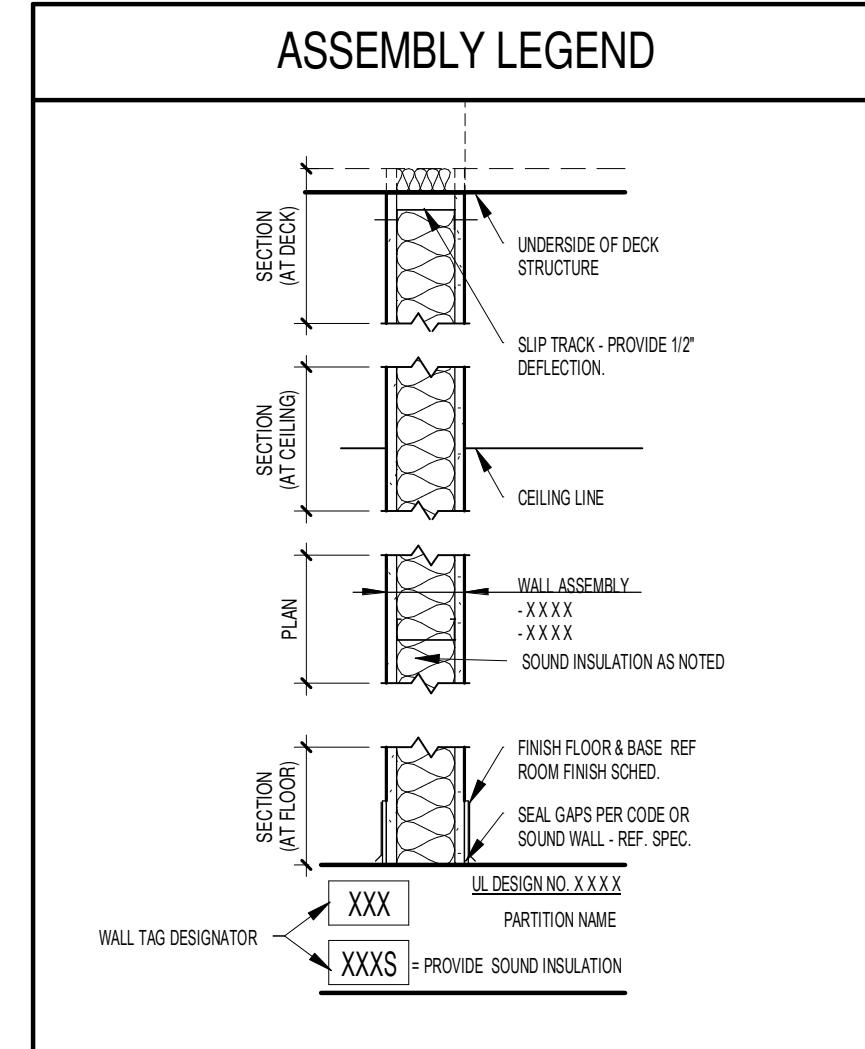
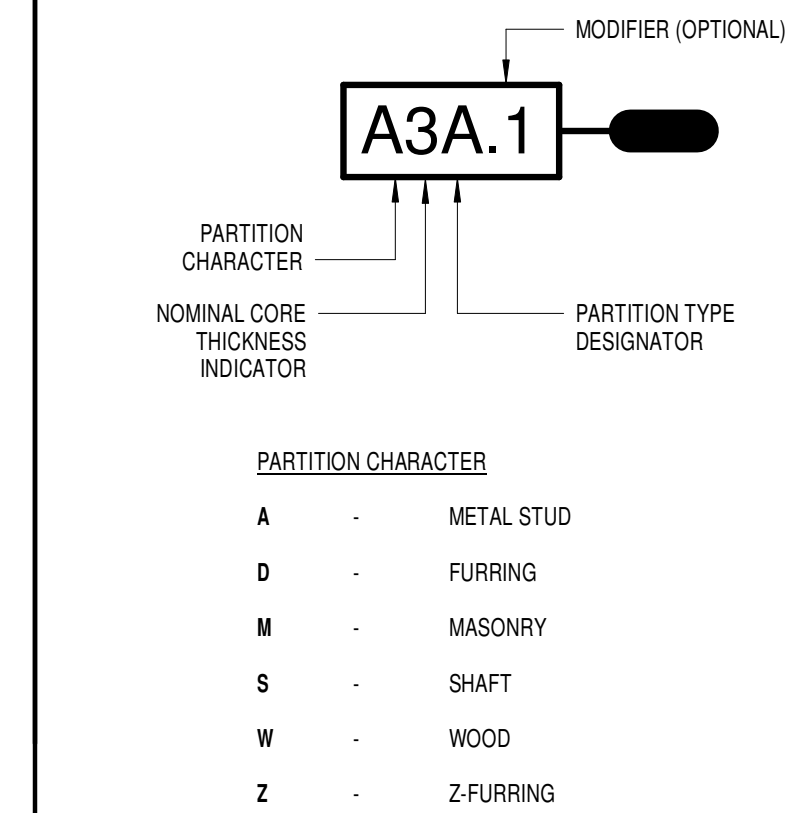
1 Legend - Construction Types  
1" = 1'-0"

PARTITION SCHEDULE		
MARK	WIDTH	DESCRIPTION
A2A	3 3/4"	2 1/2" Metal Studs, 5/8" Gypsum Board on 2 sides to Full Height
A3AS	4 7/8"	3 5/8" Metal Studs, 5/8" Gypsum Board on 2 sides to Full Height - Sound Insulation
A3B	4 7/8"	3 5/8" Metal Studs, 5/8" Gypsum Board on 2 sides to 6' above ceiling
A3DS		
A3F	5 1/2"	3 5/8" Metal Studs, 5/8" Gypsum Board on 1 side, (2) 5/8" Gypsum Board on 1 side
A6AS	7 1/4"	6" Metal Studs, 5/8" Gypsum Board on 2 sides to Full Height - Sound Insulation
A6GS.2	8 1/2"	6" Metal Studs, (2) 5/8" Gypsum Board on 2 sides to Full Height - Sound Insulation
CP8	8"	8" Cast In Place Concrete
D1B	2 1/4"	1 5/8" Metal Studs, 5/8" Gypsum Board to 6' above ceiling
D2A	3 1/8"	2 1/2" Metal Studs, 5/8" Gypsum Board to Full Height
D2B	3 1/8"	2 1/2" Metal Studs, 5/8" Gypsum Board on 2 sides to 6' above ceiling
D3A	4 1/4"	3 5/8" Metal Studs, 5/8" Gypsum Board on 1 side to Full Height
D4B	1 1/2"	7/8" Hat Channels, 5/8" Gypsum Board
E1	1' - 2 5/8"	Ext. Brick Veneer, air space, Building wrap, 1/2" wood sheathing, 6" metal stud, vapor retarder, 5/8" gyp wall board
E2		Ext. Brick Veneer, 2" insul, Bldg wrap, 3/4" sheathing, 7 5/8" CMU
SZF	3 3/4"	(2) 5/8" Gyp Bd - 2 1/2" Metal CH Studs - UL Rated Insulation - 1" Gyp. Bd. Liner

RATED WALL I.D.



PARTITION TYPE IDENTIFICATION



FULLY SPRINKLERED  
100% CONSTRUCTION DOCUMENTS

CONSULTANTS:

RPA Design  
Suite 500  
Charlotte, NC 28210  
Phone 704-887-3500  
Fax 704-887-3507

ARCHITECTS/ ENGINEERS:

TSP, Inc.  
1112 N. West Ave.  
Sioux Falls, SD 57104  
phone: (605) 336-1160  
fax: (605) 336-7926  
www.teamtsp.com

To Solve. To Excel. Together.

Drawing Title  
BUILDING ASSEMBLIES

Approved: Project Director

Project Title  
Sioux Falls VA Health Care System  
Acute Inpatient Medical Unit Addition  
and Renovation

Location  
VA Medical Center  
2801 W. 22nd Street, PO Box 5046  
Sioux Falls, SD 57117-5046

Date  
08/06/12

Checked  
RAH

Drawn  
EOO

Project Number  
438-369

Building Number  
5

Drawing Number  
5-AE501  
Dwg. 41 of 123

Office of  
Construction  
and Facilities  
Management

Department of  
Veterans Affairs

C:\TSP\Real Local Files\04100857\_VA\_A12\_Constr\_Documents\8/30/2012 3:46:24 PM

VA FORM 08-6231

Copyright TSP, Inc. 2012