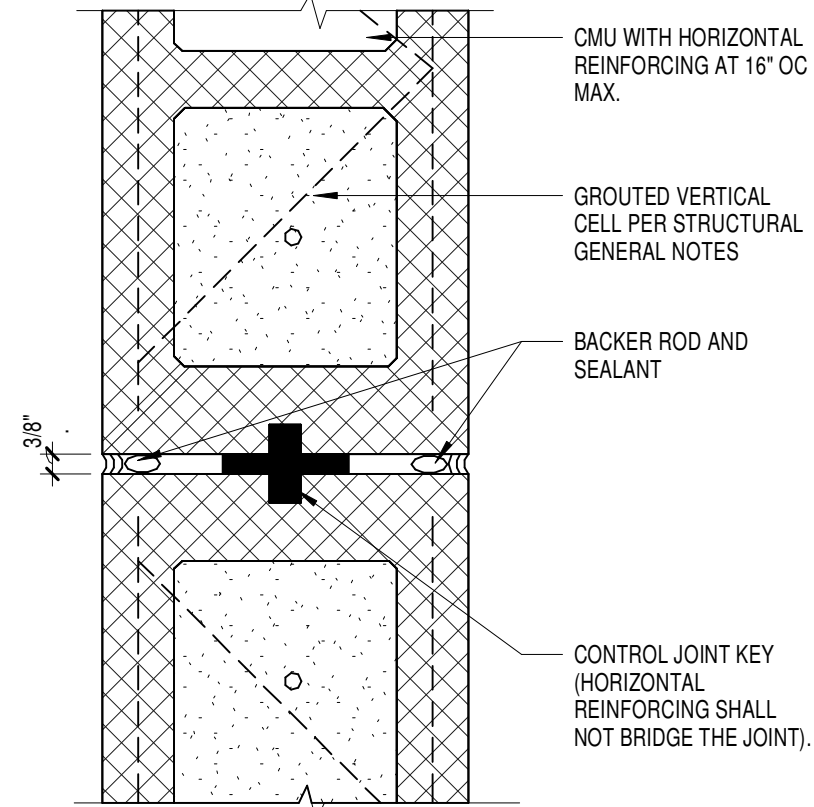
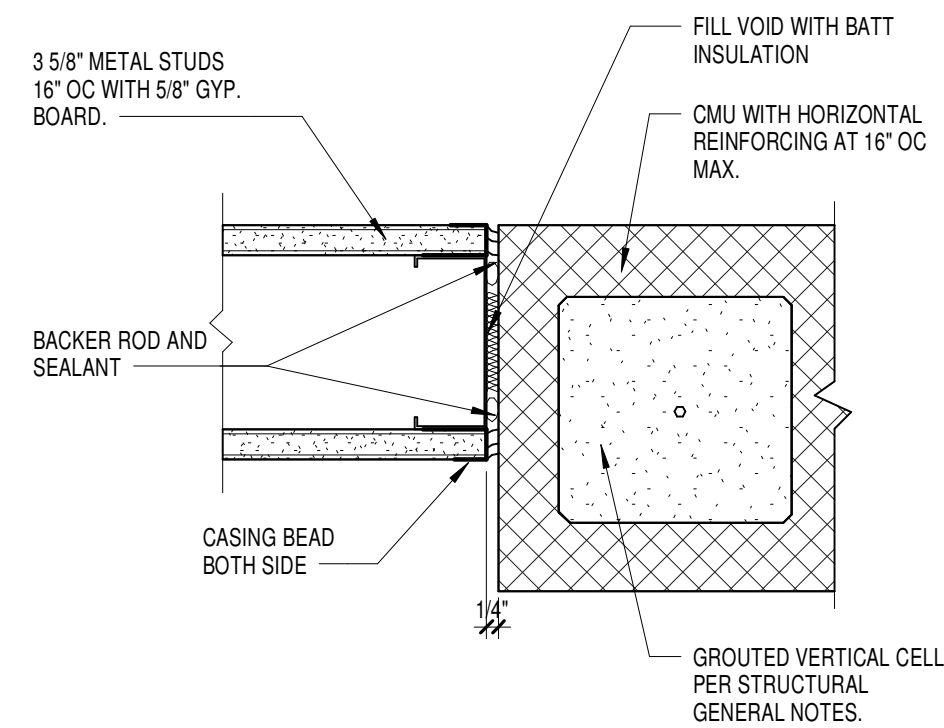


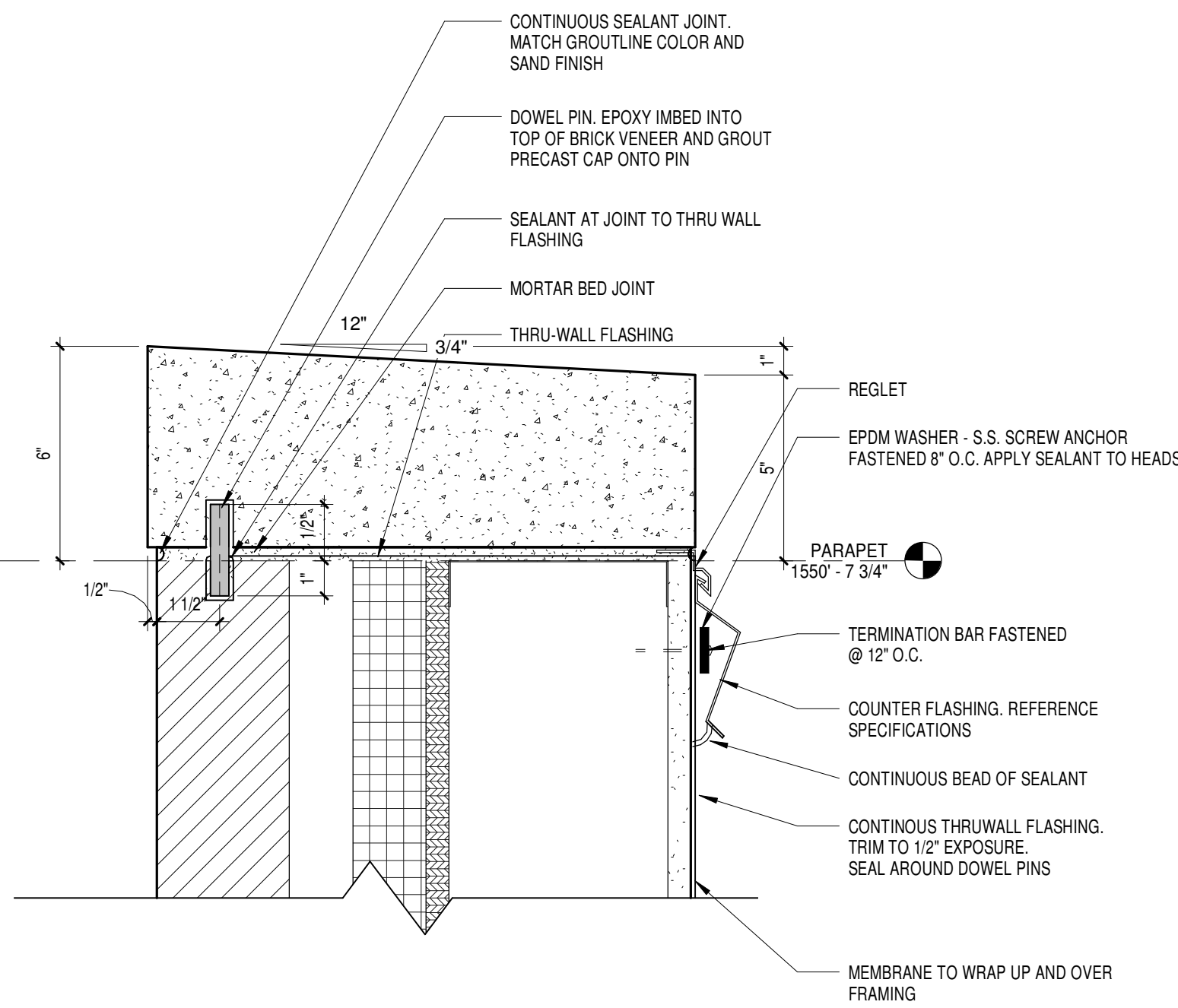
1B EXP. JT @ FLR-FLR TRANSITION 2
1 1/2" = 1'-0"



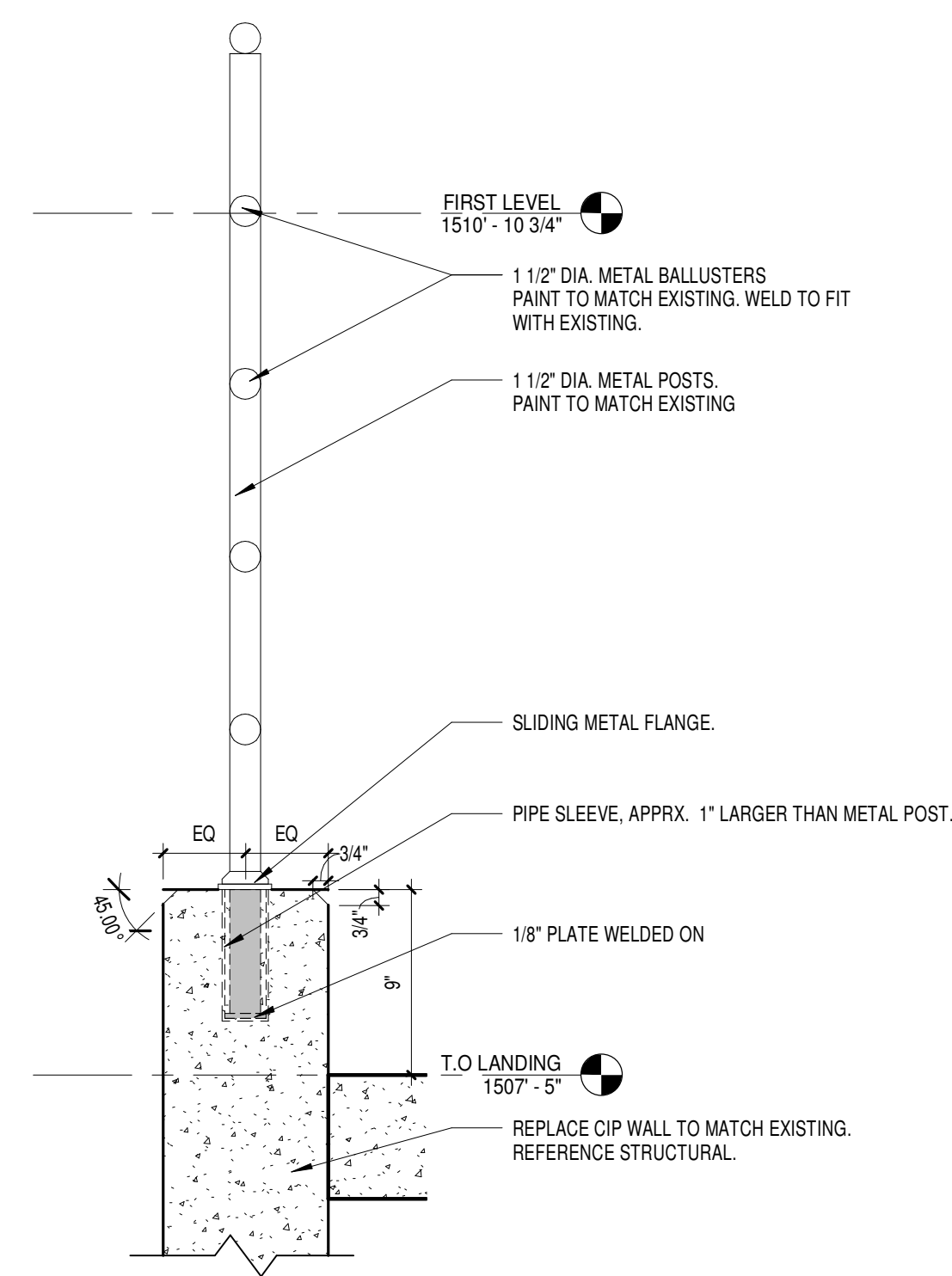
3A CMU CONTROL JOINT DETAIL
3\"/>



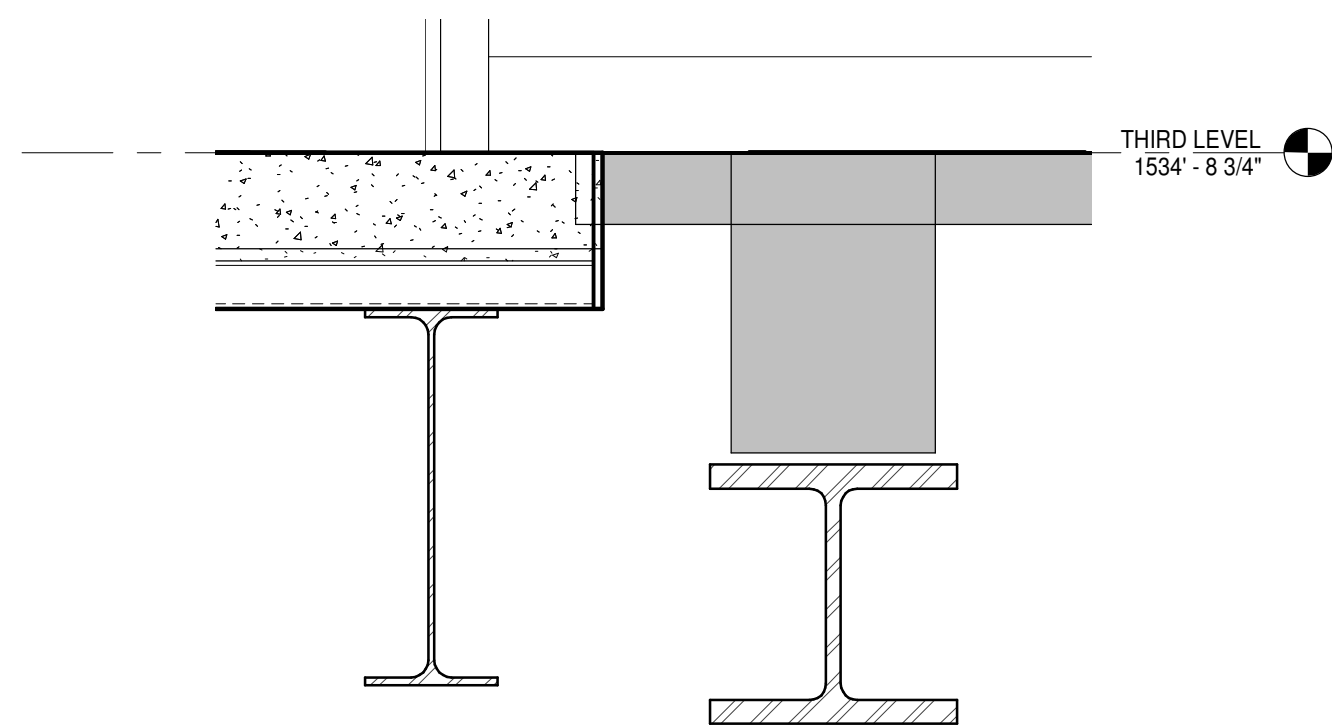
3B CMU CONTROL JOINT DETAIL
3\"/>



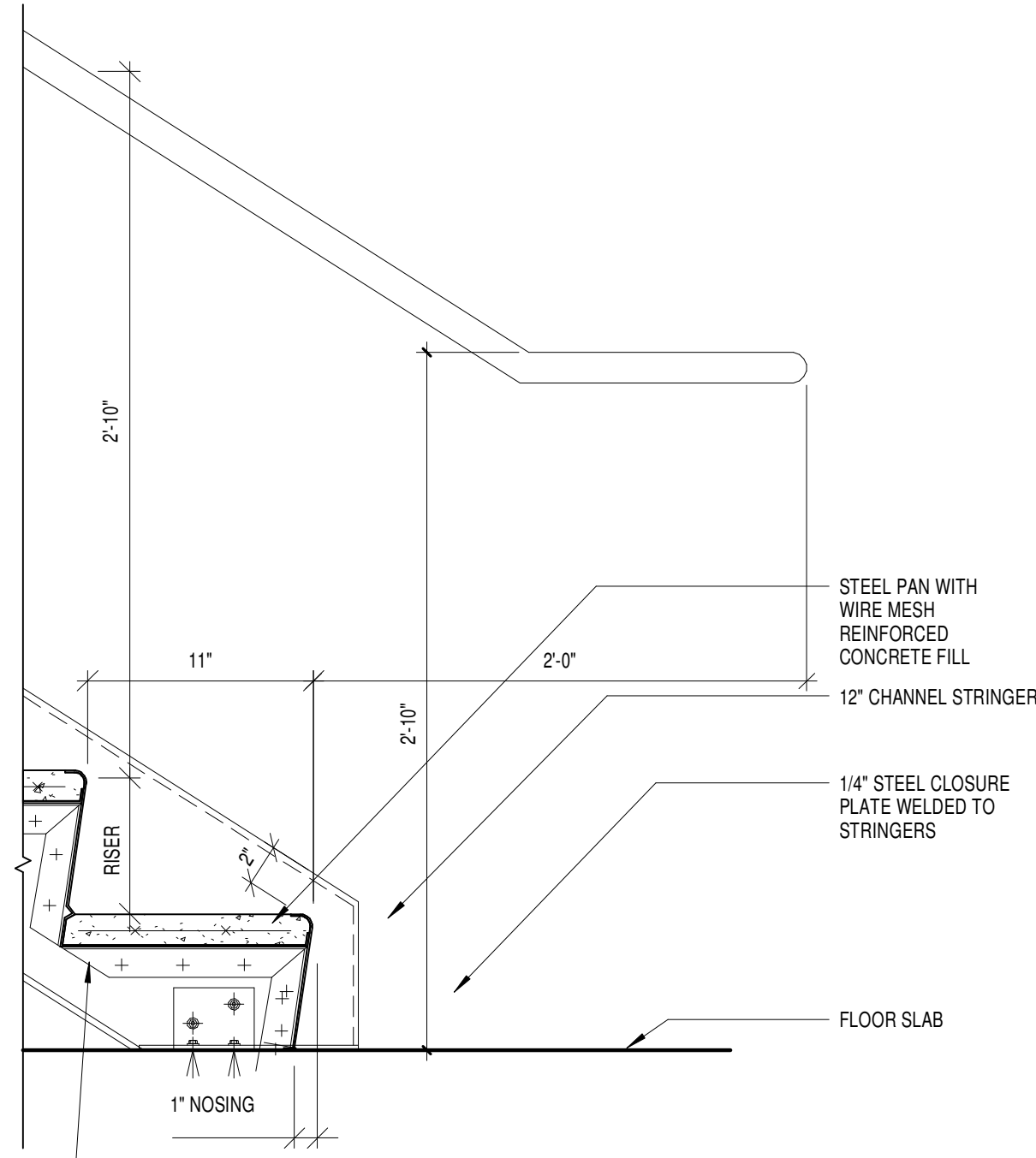
5C DOWEL PIN DETAIL
3\"/>



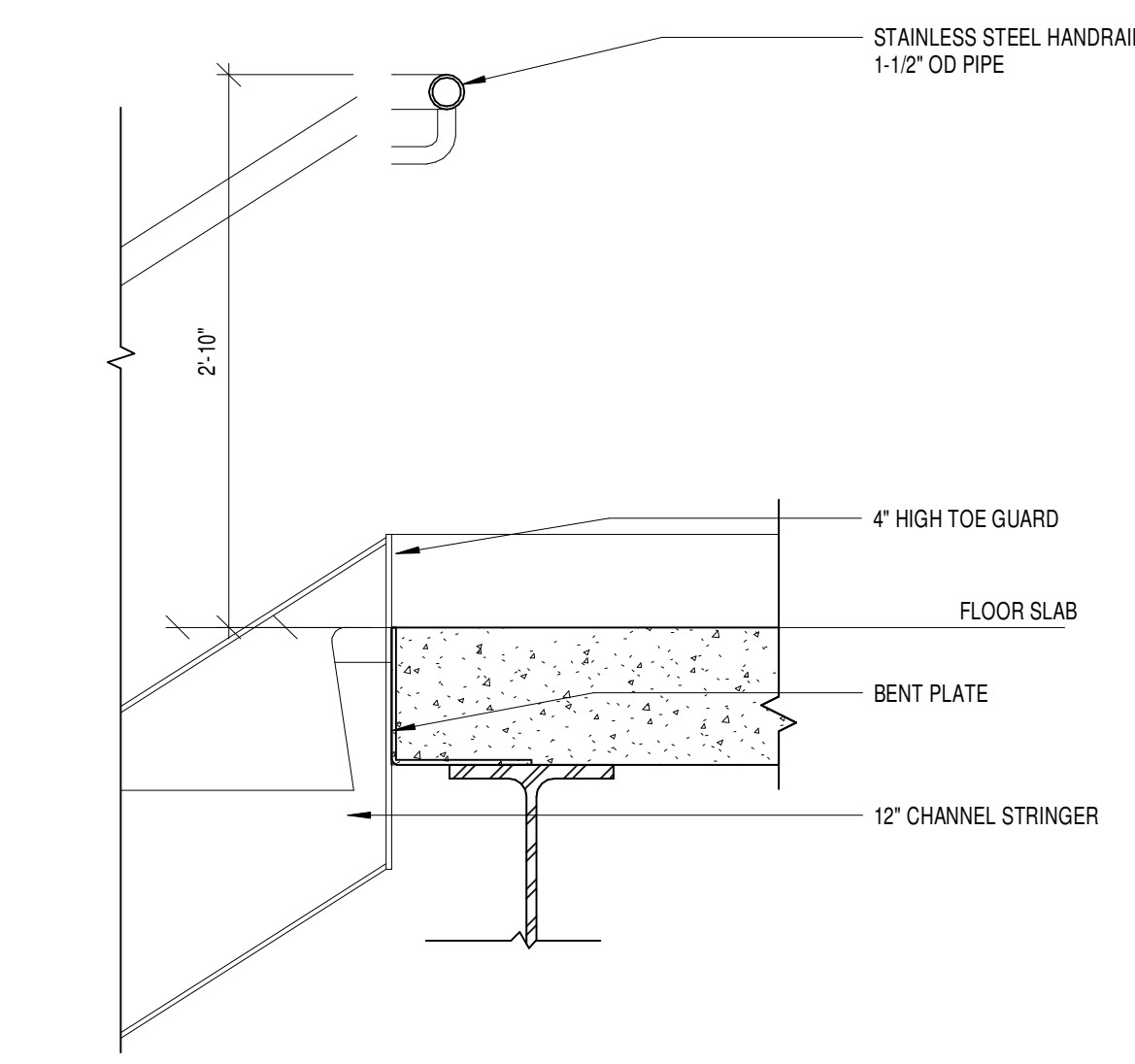
8C GUARDRAIL DETAIL
1 1/2\"/>



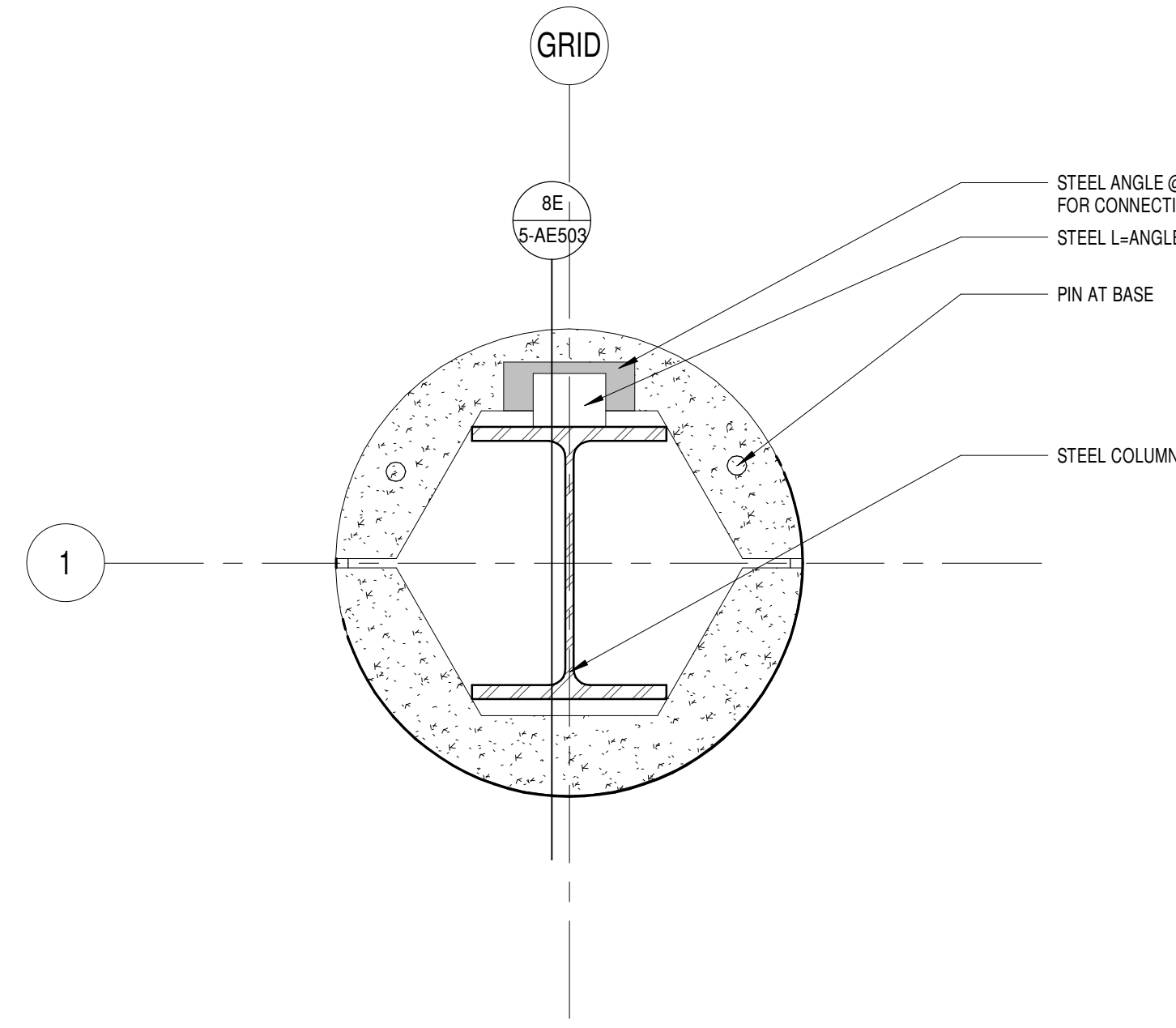
1D EXPANSION JOINT @ FLR-FLR TRANSITION
1 1/2\"/>



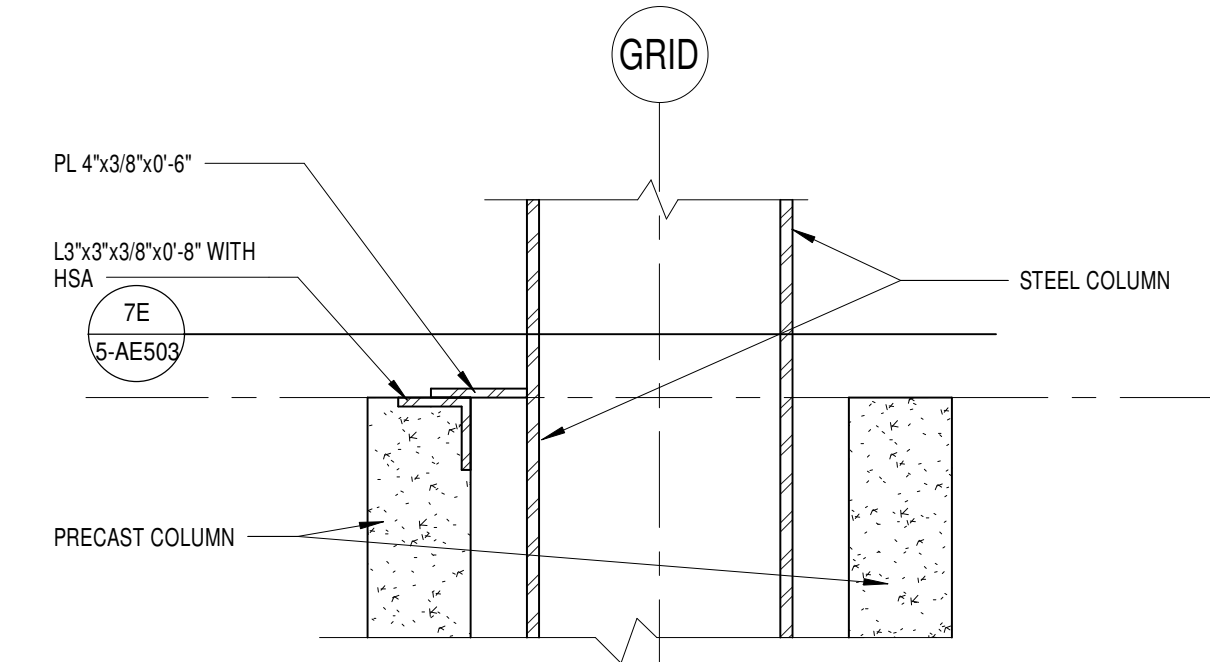
3C CONTROL JOINT - CMU TO METAL STUD
1 1/2\"/>



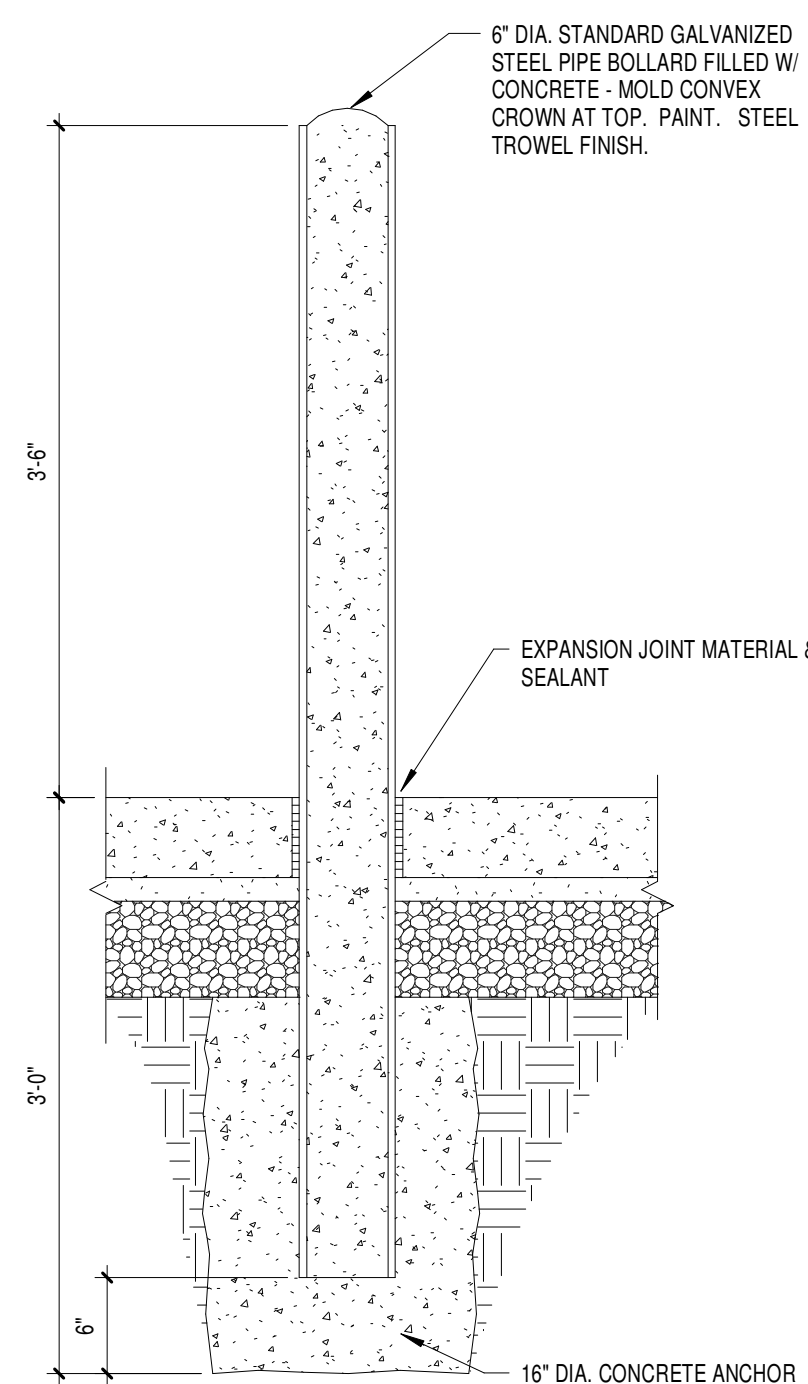
5E WALL STRINGER SECTION AT TOP LANDING
1 1/2\"/>



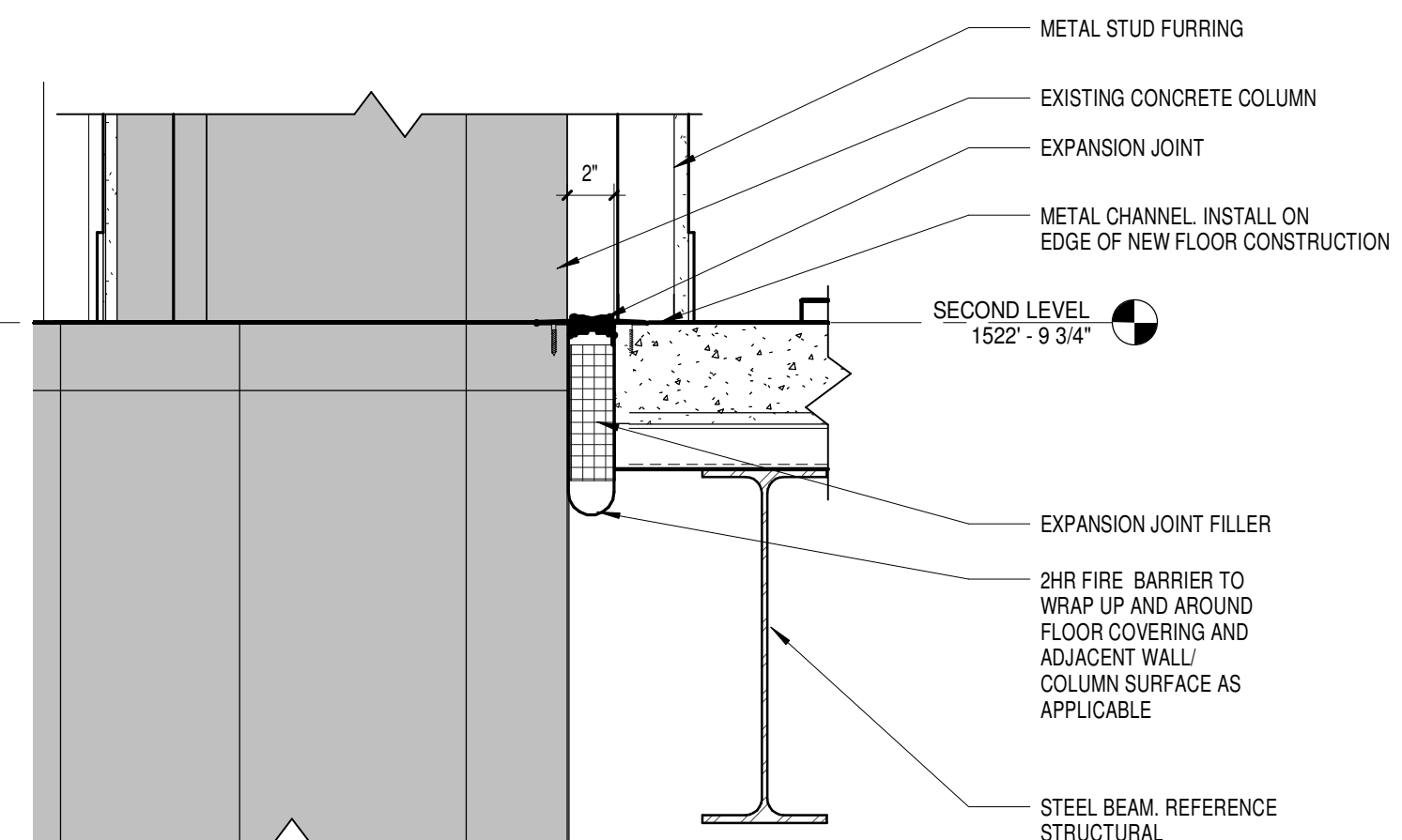
7E COLUMN COVER DETAIL
1 1/2\"/>



8E COLUMN COVER ANCHOR DETAIL
1 1/2\"/>



1F A-111-03 PIPE BOLLARD DETAIL
1\"/>



3F EXPANSION JOINT AT COLUMN TO FLOOR
1 1/2\"/>

CONSULTANTS:



ARCHITECTS/ ENGINEERS:

TSP, Inc.
1112 N. West Ave.
Sioux Falls, SD 57104
phone: (605) 336-1160
fax: (605) 336-7926
www.teamtsp.com



Drawing Title
EXTERIOR DETAILS

Approved: Project Director

Project Title
Sioux Falls VA Health Care System
Acute Inpatient Medical Unit Addition
and Renovation

Location
VA Medical Center
2501 W. 22nd Street, PO Box 5046
Sioux Falls, SD 57117-5046

Date
08/06/12

Checked
RAH

Drawn
EOO

Project Number
438-369

Building Number
5

Drawing Number

5-AE503
Dwg. 43 of 123

**Office of
Construction
and Facilities
Management**

