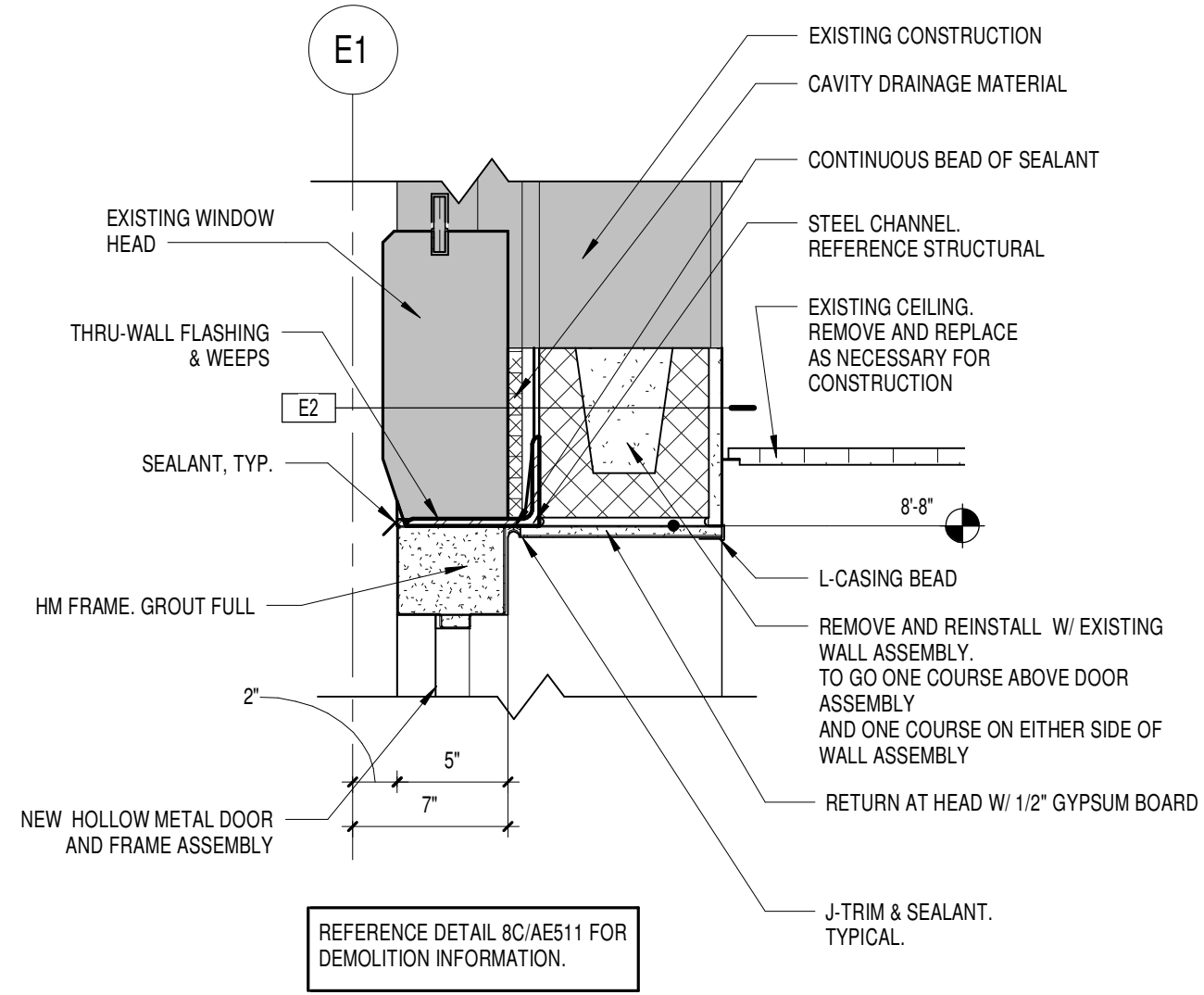
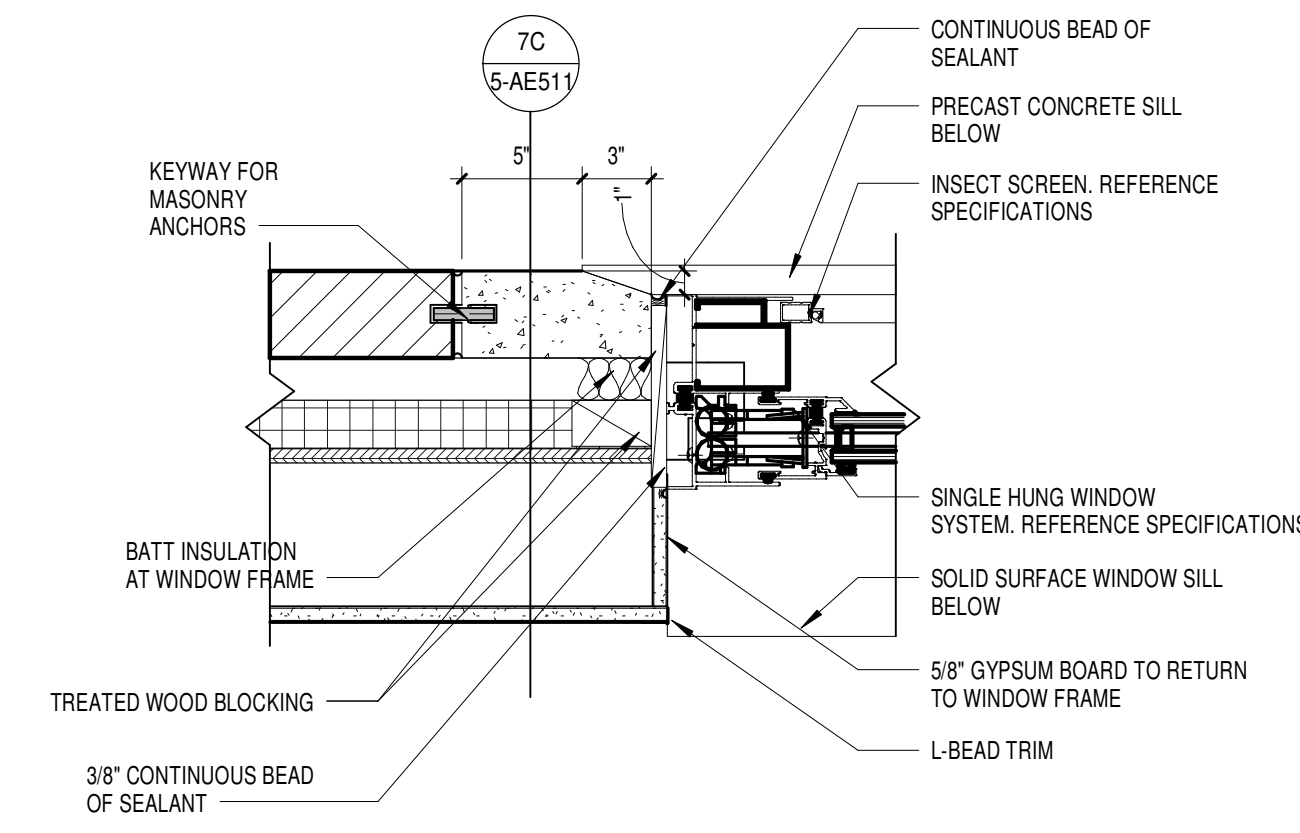


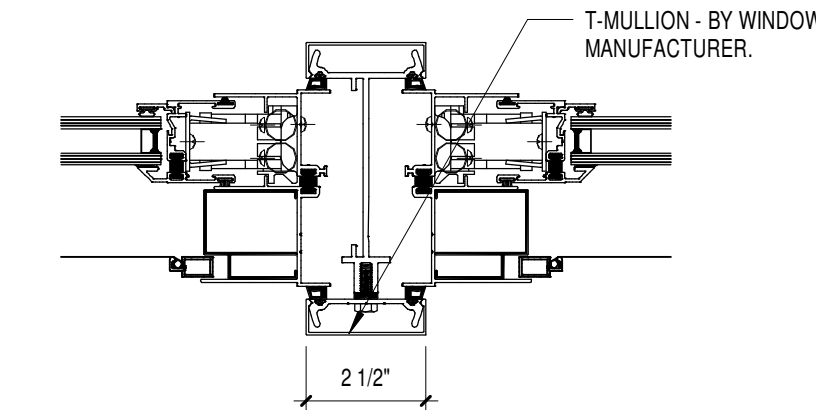
1A DOOR THRESHOLD - ROOF ACCESS
1 1/2\"/>



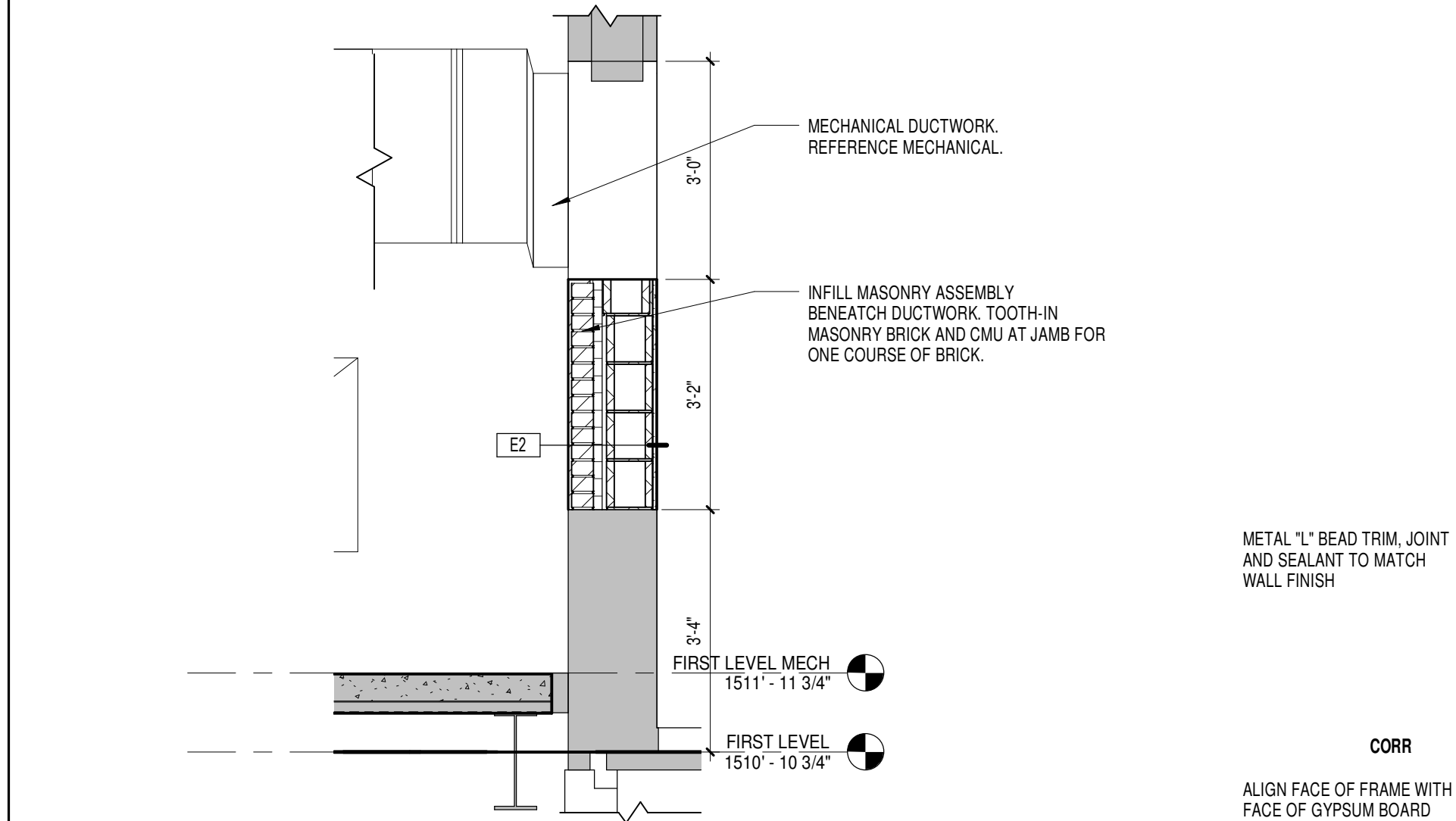
3A DOOR HEAD - ROOF ACCESS
1 1/2\"/>



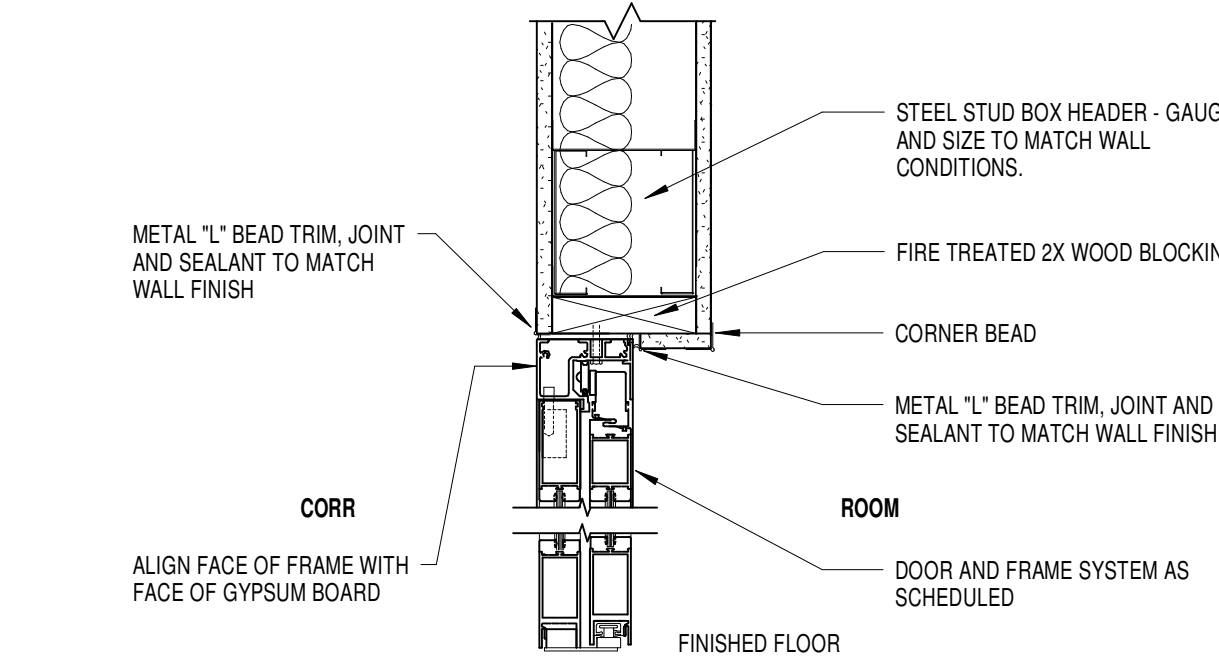
5A WINDOW JAMB DETAIL
1 1/2\"/>



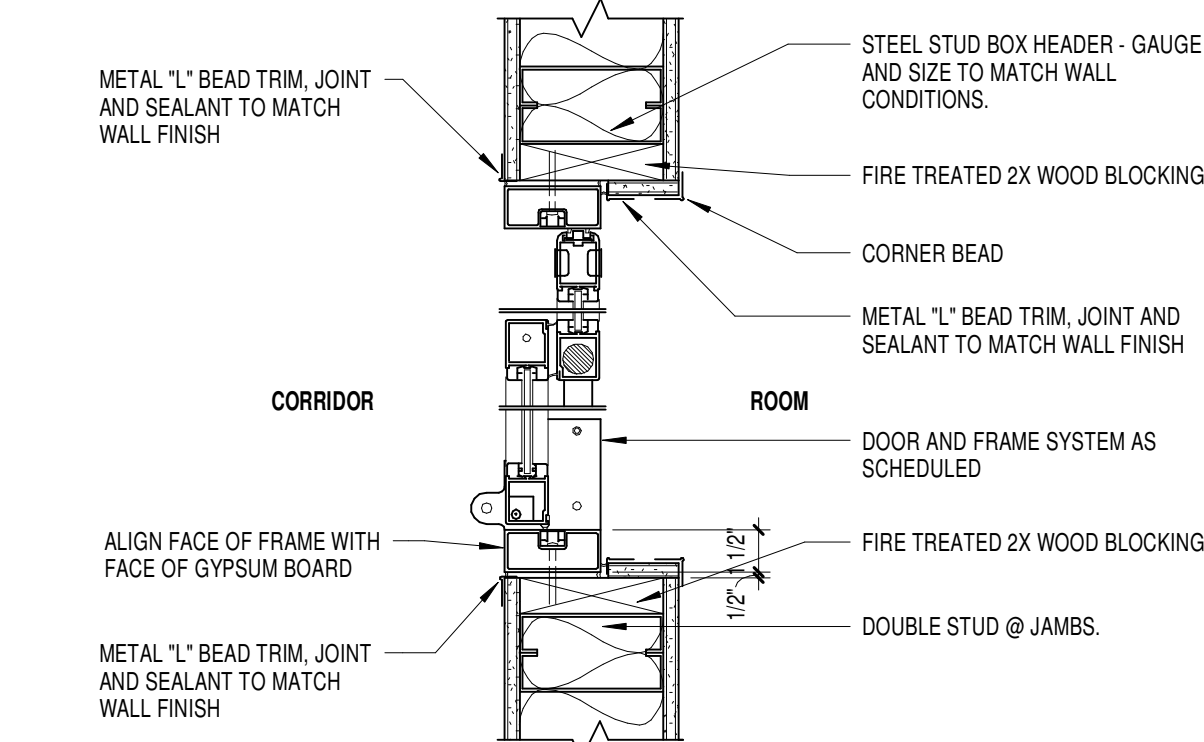
7A T-MULLION
3\"/>



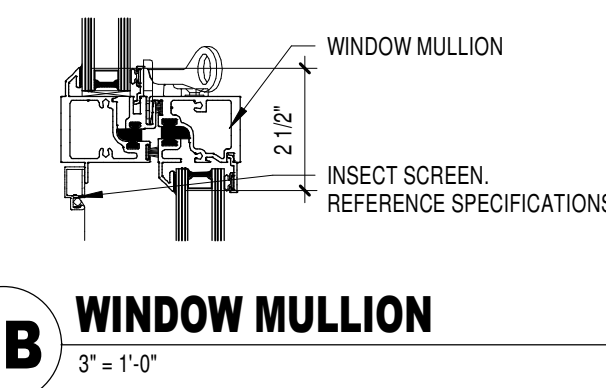
1C DUCTWORK @ MECH ROOM
1 1/2\"/>



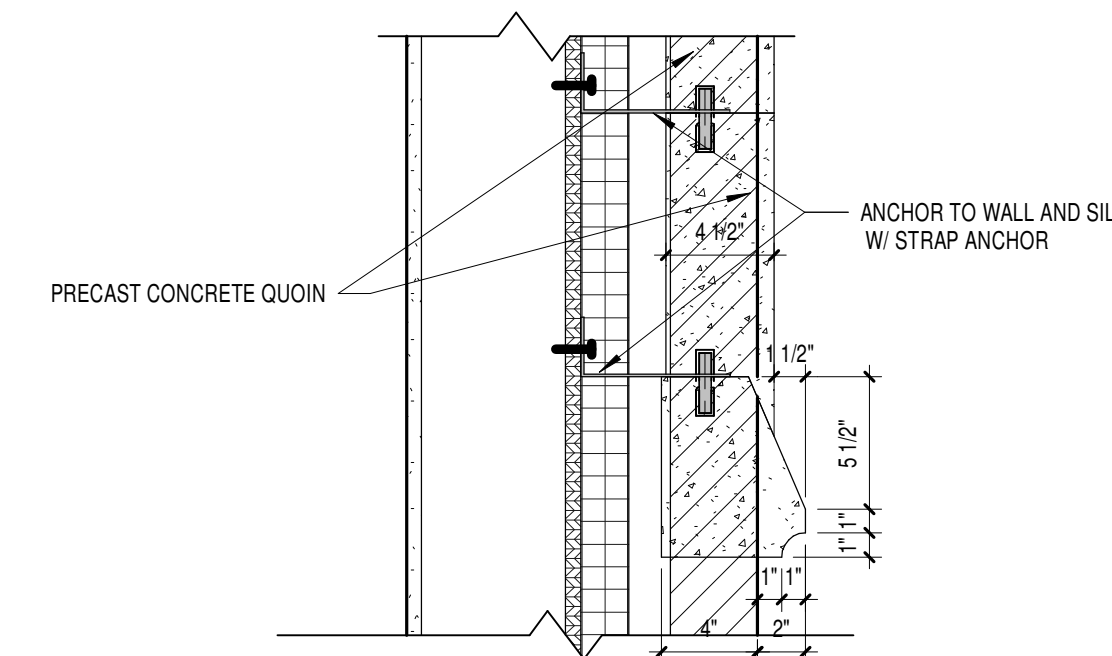
2C ICU/CCU HEAD DETAIL
1 1/2\"/>



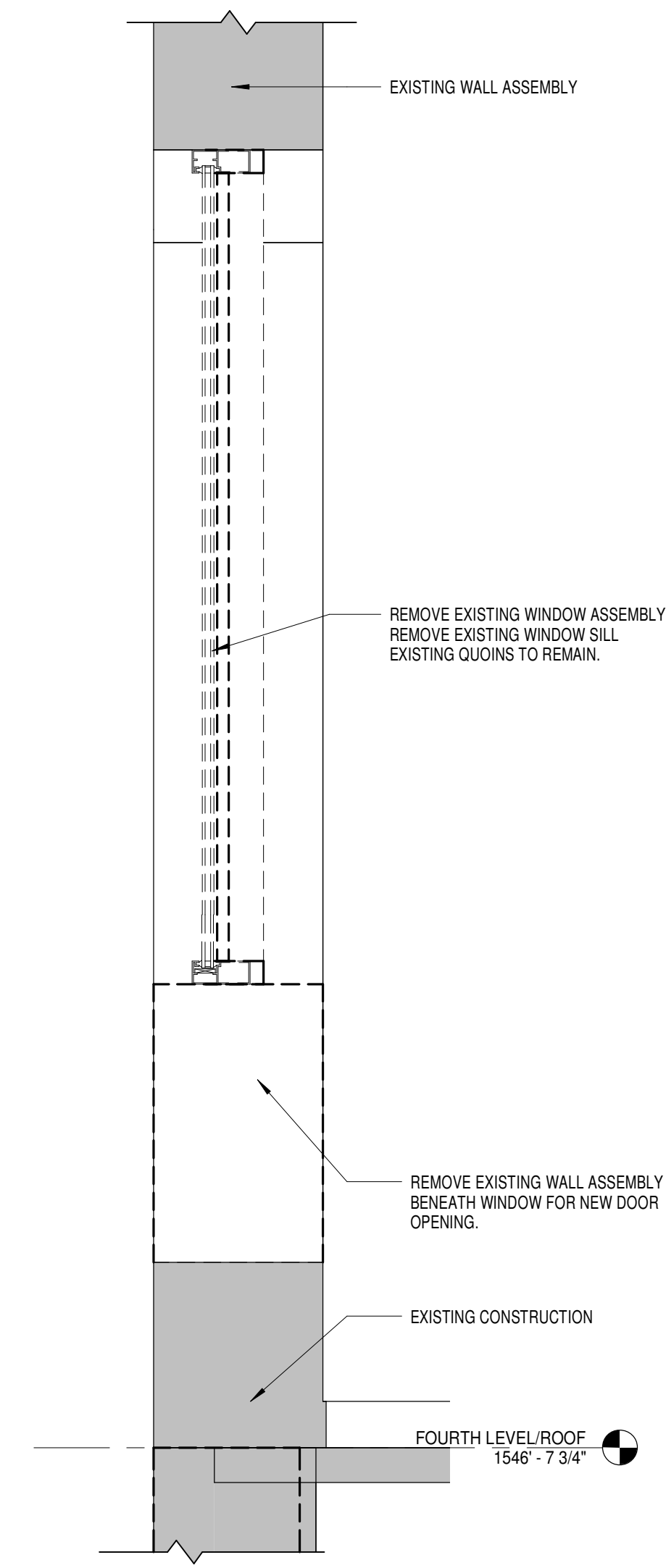
4C ICU/CCU JAMB DETAIL
1 1/2\"/>



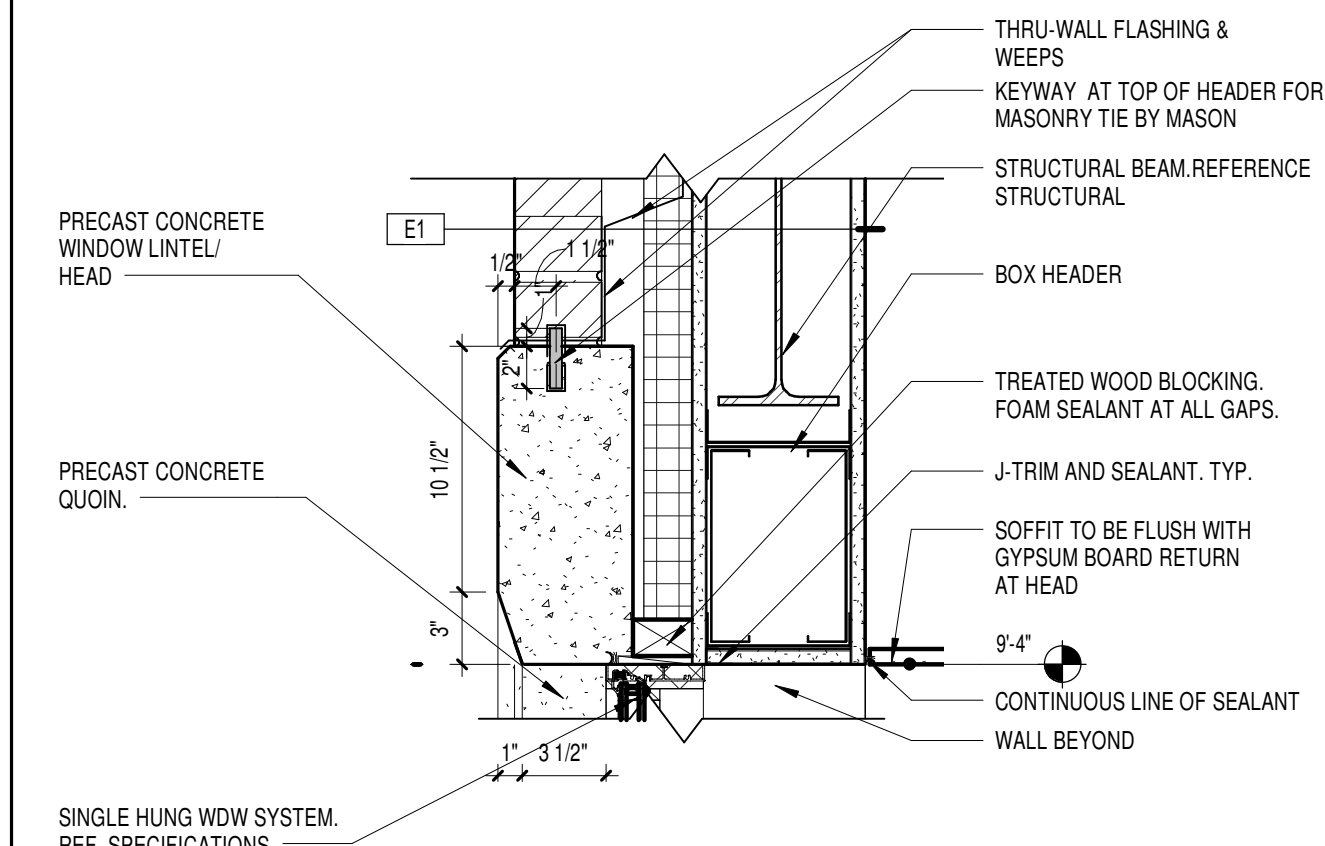
7B WINDOW MULLION
3\"/>



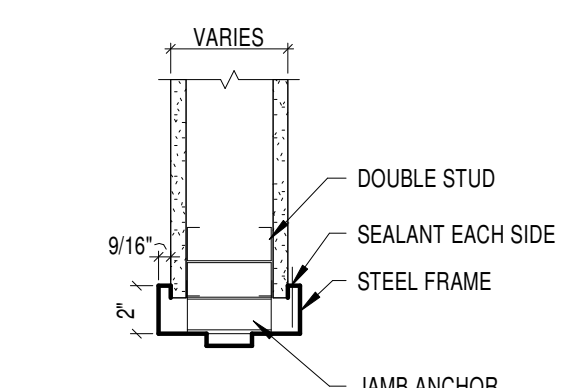
7C QUOIN - SILL DETAIL
1 1/2\"/>



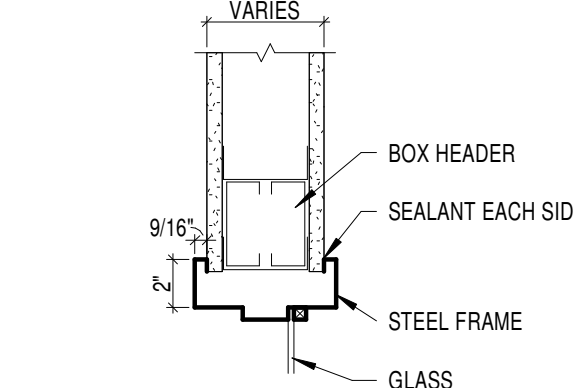
8C DOOR THRESHOLD DEMO SECTION - ROOF ACCESS
1\"/>



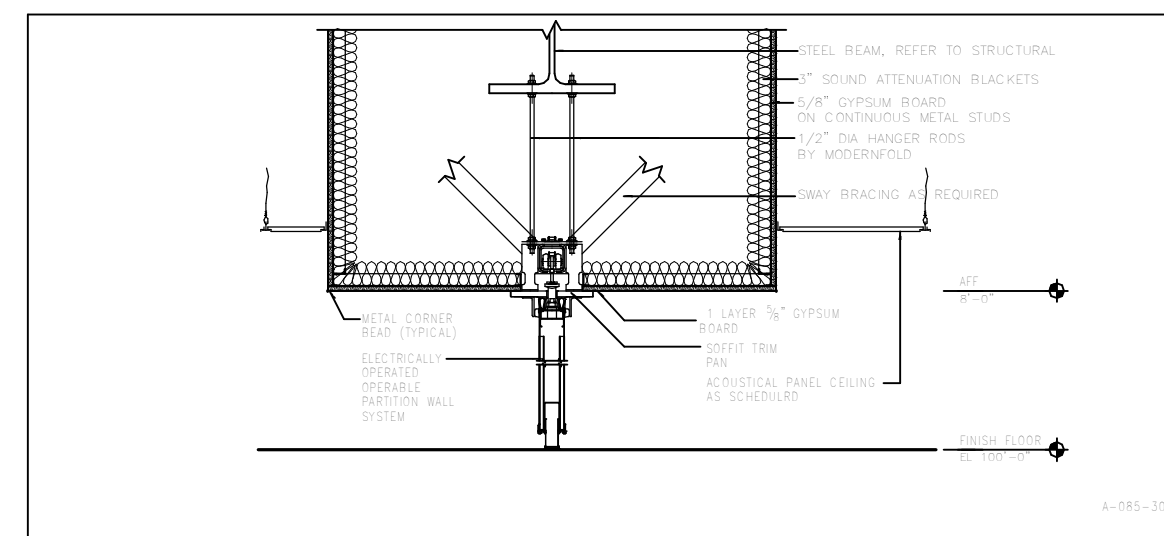
1E WINDOW HEAD DETAIL
1 1/2\"/>



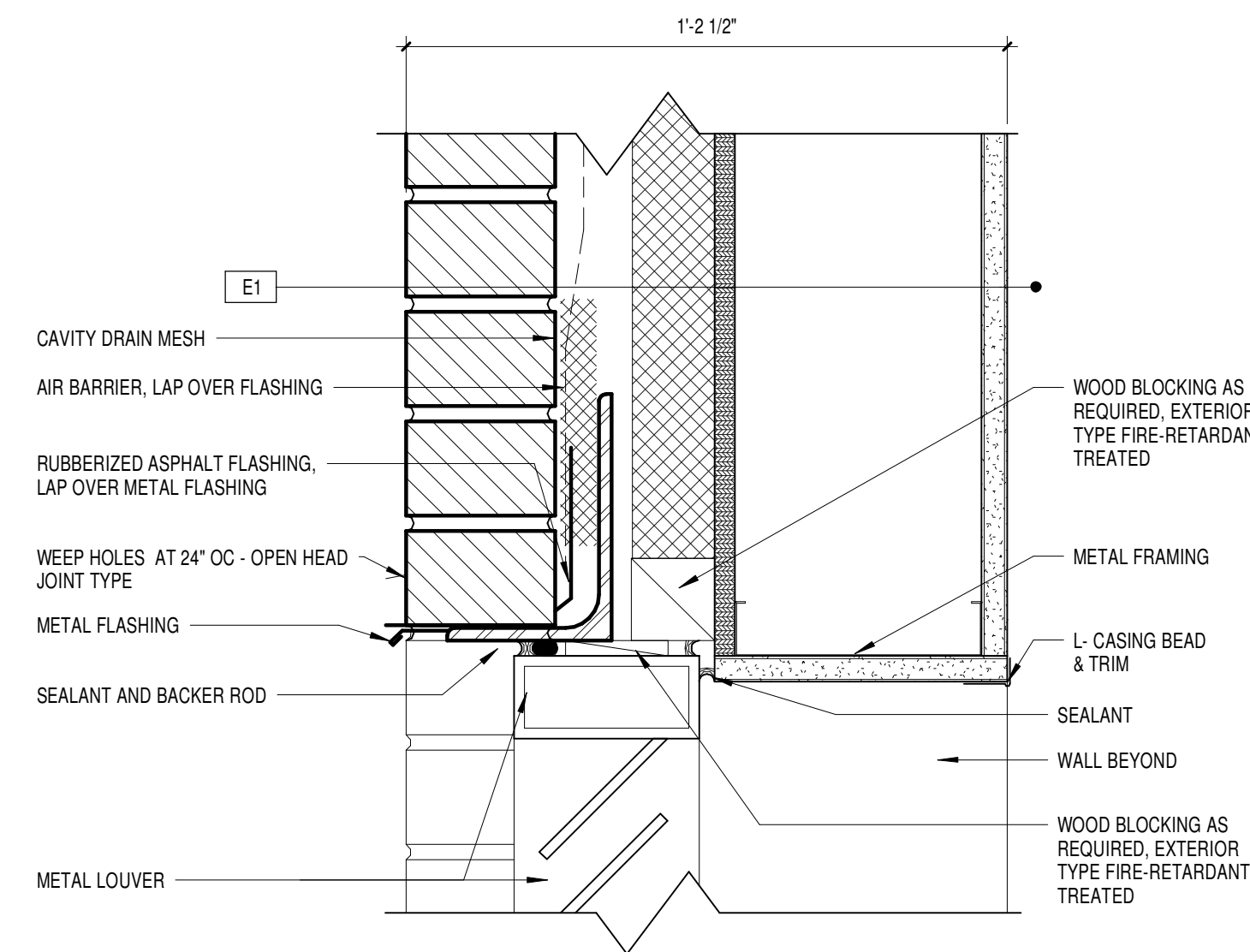
2E INT DOOR JAMB - HM
1 1/2\"/>



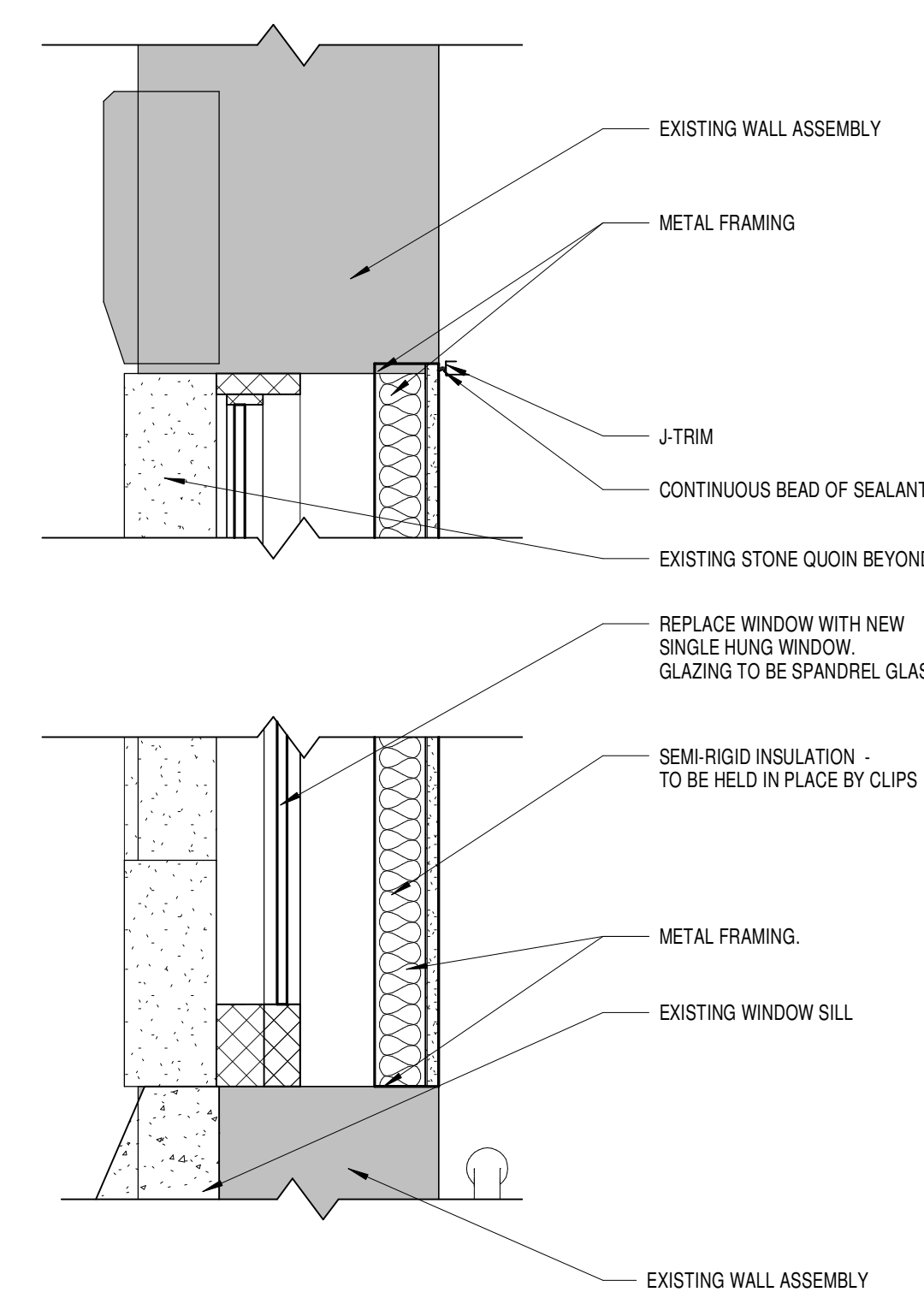
3E INT WDW HEAD - HM
1 1/2\"/>



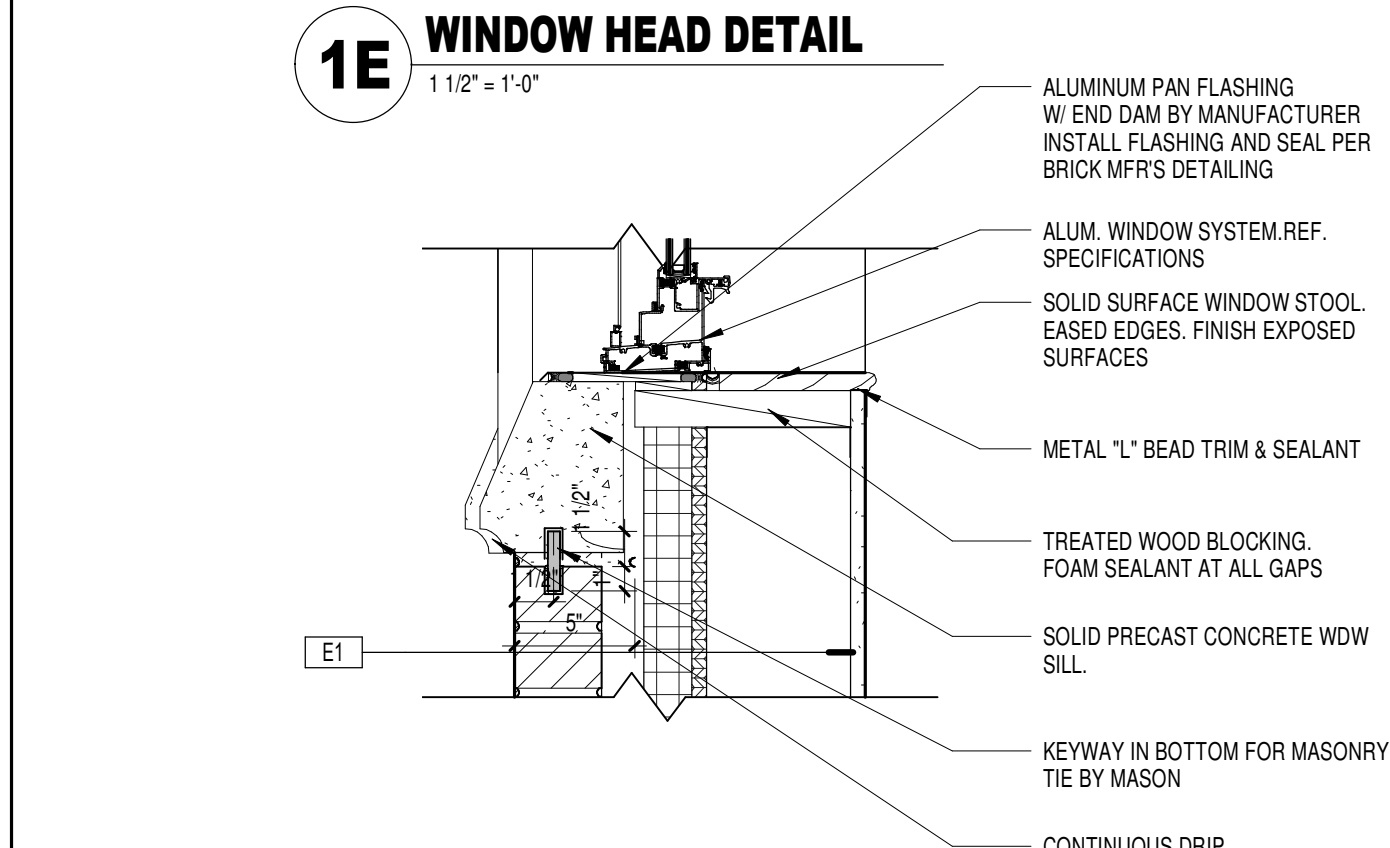
4E OPERABLE PARTITION DETAIL
1 1/2\"/>



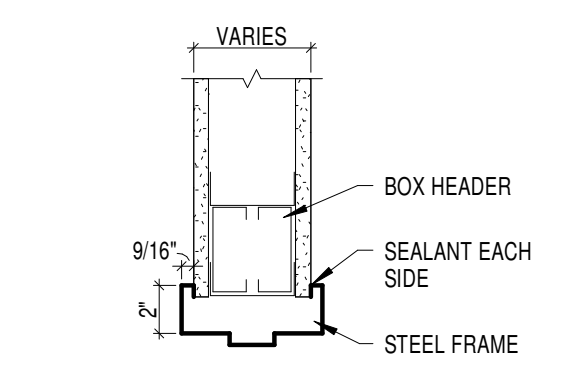
6F LOUVER HEAD AT EXTERIOR WALL
3\"/>



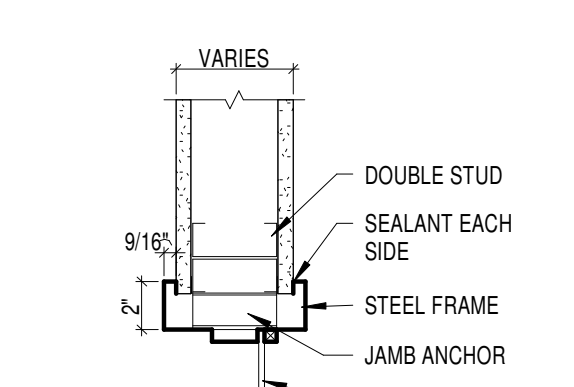
8F SPANDREL GLASS WDW SECTION
1 1/2\"/>



1F WINDOW SILL DETAIL
1 1/2\"/>



2F INT DOOR HEAD - HM
1 1/2\"/>



3F INT WDW JAMB - HM
1 1/2\"/>

CONSULTANTS: RPA Design Suite 500 Charlotte, NC 28210 Phone 704-887-3500 Fax 704-887-3507		ARCHITECTS/ ENGINEERS: TSP, Inc. 1112 N. West Ave. Sioux Falls, SD 57104 phone: (605) 336-1160 fax: (605) 336-7926 www.teamtsp.com To Solve. To Excel. Together.		Drawing Title DOOR AND WINDOW DETAILS Approved: Project Director		Project Title Sioux Falls VA Health Care System Acute Inpatient Medical Unit Addition and Renovation Location VA Medical Center 2801 W. 22nd Street, PO Box 5046 Sioux Falls, SD 57117-5046 Date 08/06/12 Checked RAH Drawn EOO		Project Number 438-369 Building Number 5 Drawing Number 5-AE511 Dwg. 45 of 123		Office of Construction and Facilities Management 	
MARK REVISION DESCRIPTION DATE											